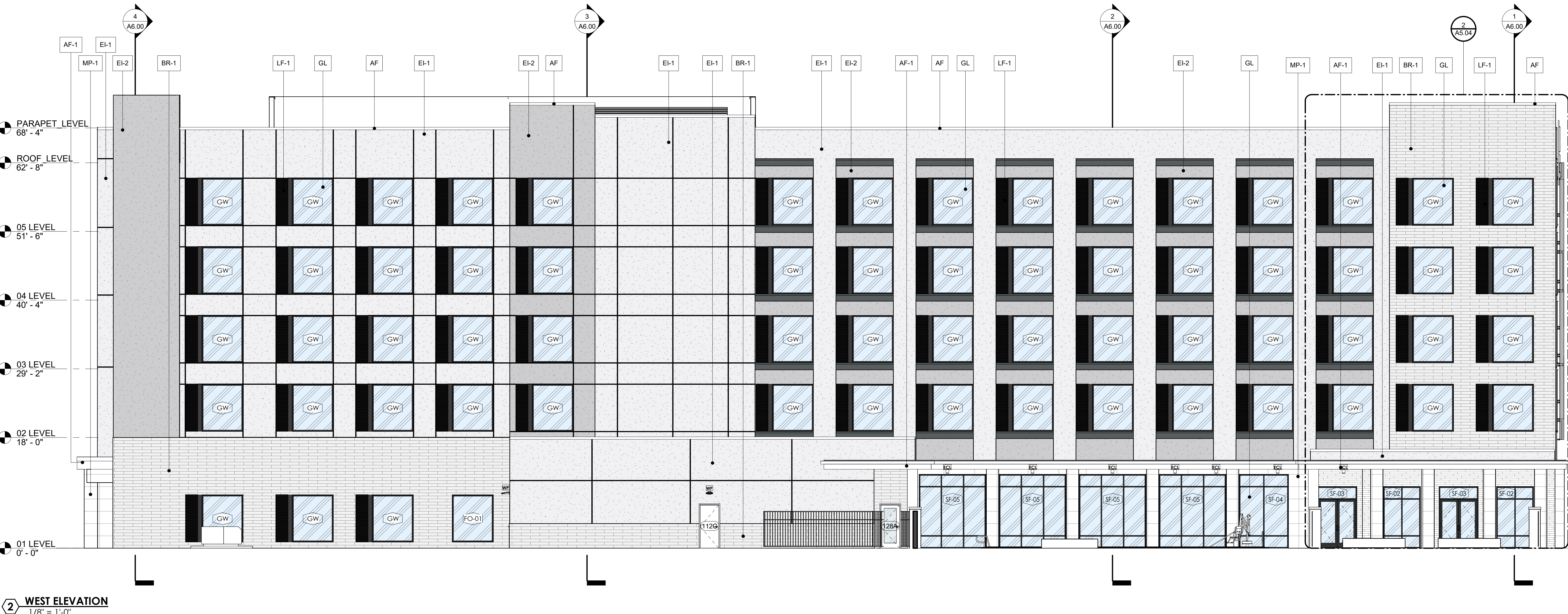
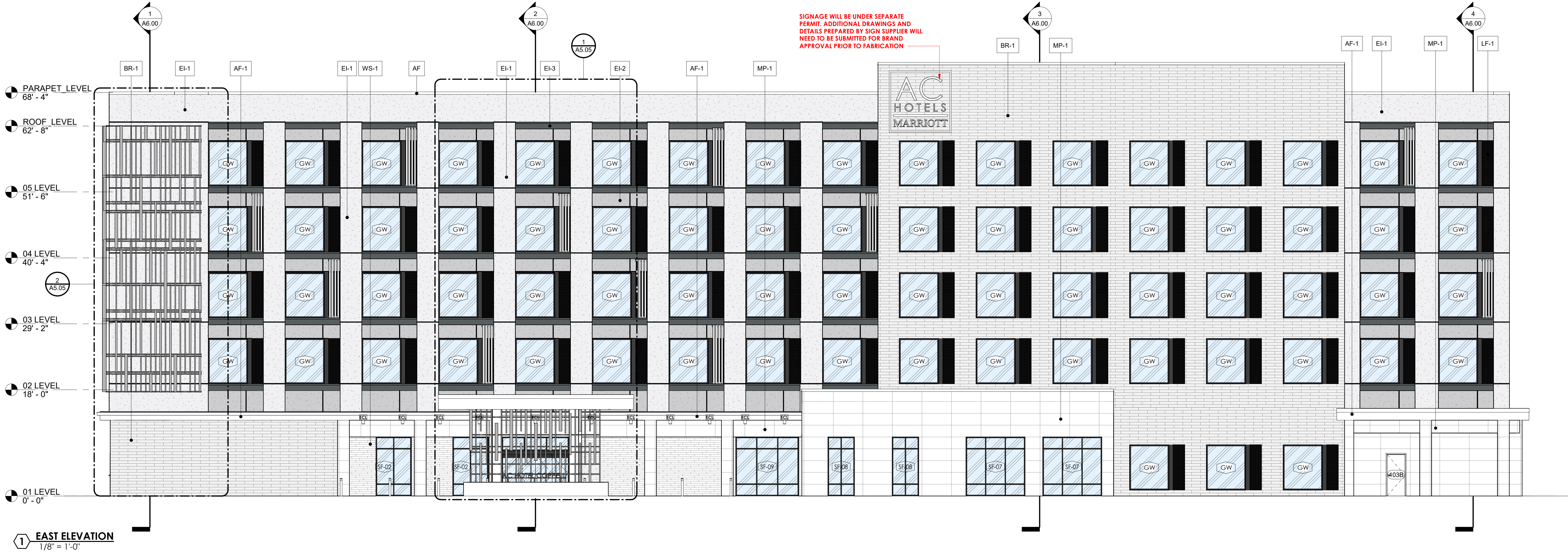



ZONING	
HIGHWAY COMMERCIAL EXTERIOR CONSTRUCTION REGULATIONS	
CORNICE/CAP 3 COLORS MAX. 100% MAX BASE COLOR 5% MAX SECONDARY COLOR & 1% MAX ACCENT COLOR 50% MAX GLAZING PER FACADE	YES YES - 3 EIFS COLORS YES NO (PREV. APPROVED) YES
NOTE: ALL ATTACHED BUILDING SIGNAGE WILL COMPLY WITH THE SIGN SECTION OF THE ZONING ORDINANCE AND WILL BE PERMITTED SEPARATELY.	

MATERIAL CALLOUTS	ADDITIONAL NOTES:	ELEVATION PERCENTAGES
BR-1 KING KLINKER - WHITE NIGHT - CHARCOAL GREY - TYPE N MORTAR	ALL SIGNAGE SUBJECT TO BUILDING INSPECTION DEPARTMENT APPROVAL. MECHANICAL UNITS SHALL BE SCREENED IN ACCORDANCE WITH LOCAL CITY AND ZONING ORDINANCES. UTILITY BOXES AND CONDUIT SHALL BE PAINTED TO MATCH BUILDING COLOR. ROMAN SIZE FACE BRICK, WITH 3/8" CONCAVE GROUT JOINT- MORTAR TO BE MATCHED TO GROUT. CONTRACTOR TO ENSURE METAL PANELS ARE INSTALLED IN ACCORDANCE WITH MANUFACTURERS RECOMMENDATION. SIGN DESIGNED AND FABRICATED BY APPROVED VENDOR TO MEET BRAND STANDARDS. FOR LOCATION ONLY ALL UTILITY BOXES AND METERS SHALL BE PAINTED TO MATCH SURROUNDING BUILDING FACADE. FINAL SIGN DESIGN TO BE DRAFTER BY THIRD PARTY CONTRACTOR TO ENSURE FINAL SIGN PACKAGE IS SUBMITTED APPROVED BY THE BRAND	NORTH ELEVATION OVERALL - 5,454 TOTAL SQ. FT. 248 SQ. FT. - GLAZING 5,186 SQ. FT. - MASONRY MATERIALS • EIFS • STONE • MASONRY COMPOSITE PANELS
EI-1 EIFS - 'SW7003 - TOQUE WHITE		EAST ELEVATION OVERALL - 16,636 TOTAL SQ. FT. 3,622 SQ. FT. - GLAZING 12,391 SQ. FT. - MASONRY MATERIALS • EIFS • STONE • MASONRY COMPOSITE PANELS 623 SQ. FT. - METAL PANEL(3%) SIGNAGE - 1305F
EI-2 EIFS - 'SW7054 - MODERN GREY		SOUTH ELEVATION OVERALL - 5,449 TOTAL SQ. FT. 536 SQ. FT. - GLAZING 4,330 SQ. FT. - MASONRY MATERIALS • EIFS • STONE • MASONRY COMPOSITE PANELS 583 SQ. FT. - METAL PANEL(9%) SIGNAGE - 1005F
EI-3 EIFS - 'SW7047 PORPOISE"		WEST ELEVATION OVERALL - 16,561 TOTAL SQ. FT. 3,063 SQ. FT. - GLAZING 13,041 SQ. FT. - MASONRY MATERIALS • EIFS • STONE • MASONRY COMPOSITE PANELS 457 SQ. FT. - METAL PANEL(2,7%) SIGNAGE - 1485F
MP-1 EN-V VS SERIES METAL PANEL - MUSKET GREY		
LF-1 LOUVER FINISH - DARK BRONZE TO MATCH STOREFRONT		
AF-1 ALUMINUM PARAPET FLASHING TO MATCH STOREFRONT		
GL EXTERIOR WINDOWS: STOREFRONT WINDOW SYSTEM		
SF STOREFRONT - KAWNEER - "DARK BRONZE #40"		
WS-1 CORONADO - BARN WOOD STONE - RUSTIC FARMHOUSE		



SITE LOCATION



AC HOTEL - BY MARRIOTT

PD-221R35-HC, LOT 1R-BR, BLK C DUKE LESLEY (AC BY MARRIOTT)
CITY OF COPPELL
DALLAS COUNTY, TEXAS 75019

OWNER
WHITESTONE HOSPITALITY, LLC
972.600.8162

PREPARED BY:
TYPE-SIX DESIGN AND DEVELOPMENT
PROJECT CONTACT: CONNOR WALKER, AIA
920 SOUTH MAIN STREET, SUITE 150
GRAPEVINE, TEXAS 76051

SUBMITTAL DATE: 18 AUGUST 2025

TYPE-SIX

TYPE-SIX DEVELOPMENT SERVICES, LLC
910 SOUTH MAIN STREET #150
GRAPEVINE, TEXAS 76054
972.677.9075

**AC DALLAS COPPELL DFW AIRPORT NORTH
WHITESTONE HOSPITALITY**
1543 S BELT LINE ROAD
COPPELL, TEXAS

PROJECT # 24021

ARCHITECT	
D. HAYES HINKLE	
ISSUE DATE	
8.18.2025	
ISSUED FOR	
REVIEW	

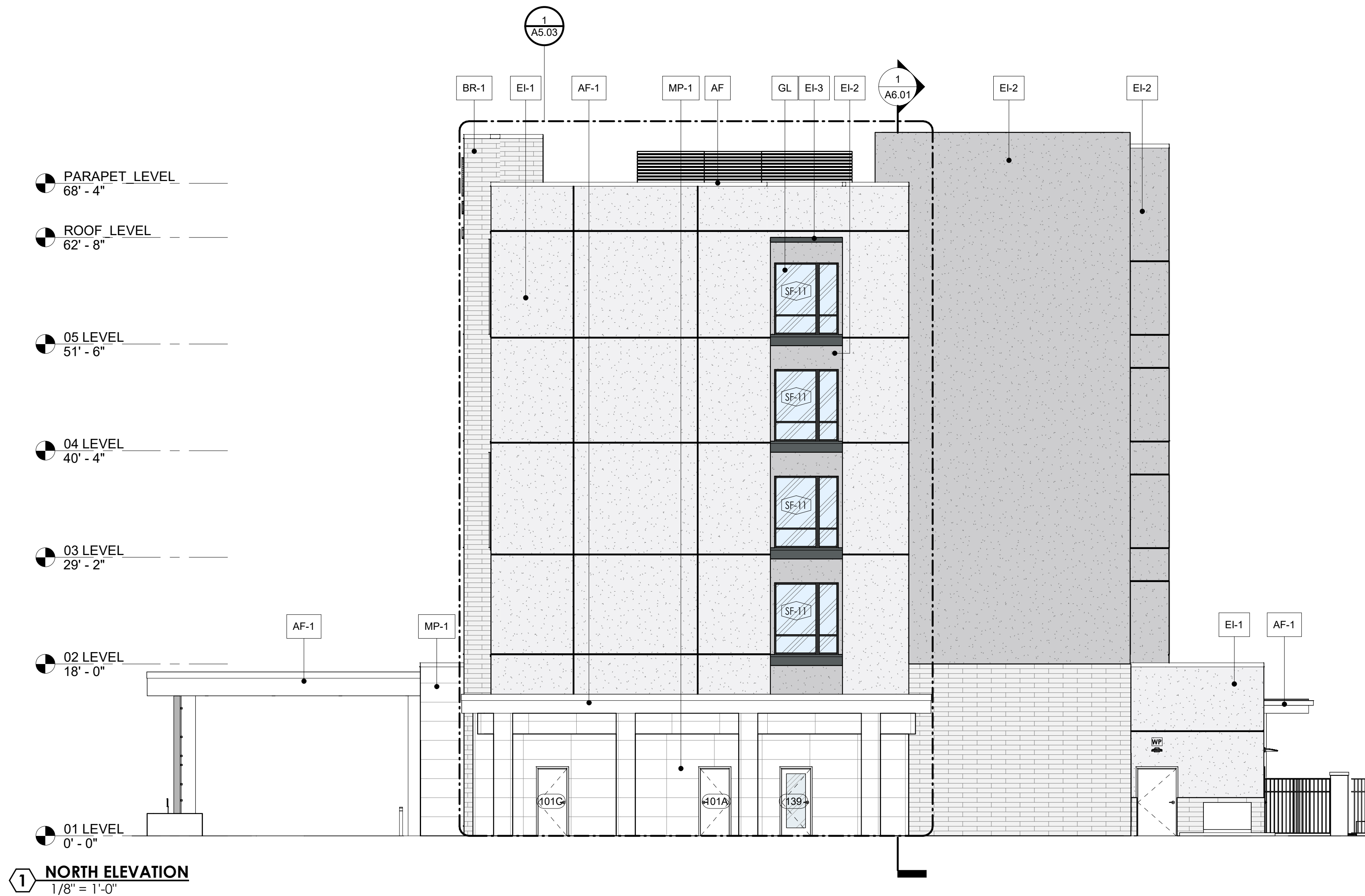
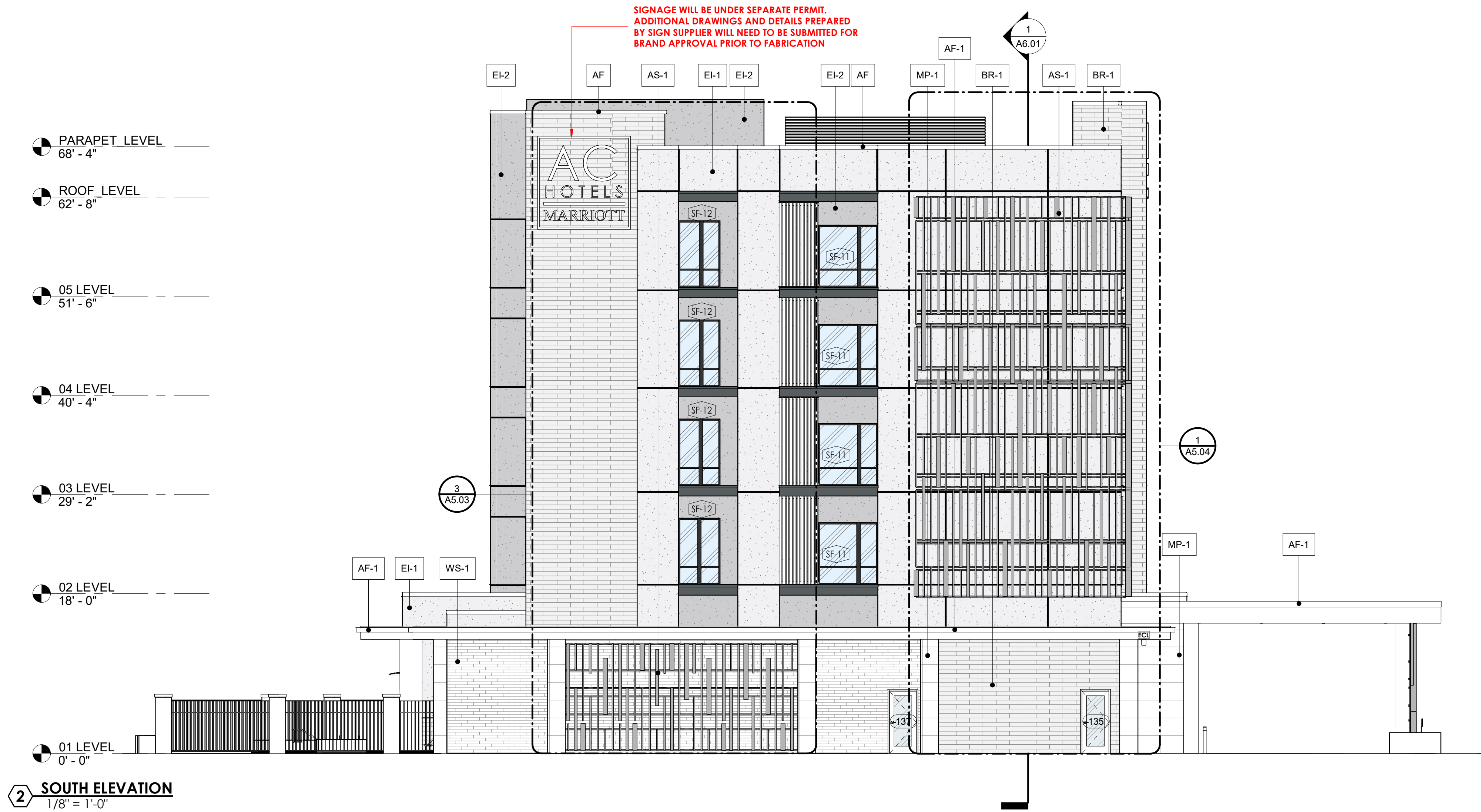
#	Revision	Date
SHEET NAME		
BUILDING ELEVATIONS		
SHEET NUMBER		
A5.01		



ZONING		
HIGHWAY COMMERCIAL EXTERIOR CONSTRUCTION REGULATIONS		
CORNICE/CAP	YES	
3 COLORS MAX.	YES - 3 EIFS COLORS	
100% MAX BASE COLOR	YES	
5% MAX SECONDARY COLOR & 1% MAX ACCENT COLOR	NO (PREV. APPROVED)	
50% MAX GLAZING PER FACADE	YES	

NOTE: ALL ATTACHED BUILDING SIGNAGE WILL COMPLY WITH THE SIGN SECTION OF THE ZONING ORDINANCE AND WILL BE PERMITTED SEPARATELY.

MATERIAL CALLOUTS		ADDITIONAL NOTES:	ELEVATION PRECENTAGES
BR-1	KING KLINKER - WHITE NIGHT - CHARCOAL GREY - TYPE N MORTAR	ALL SIGNAGE SUBJECT TO BUILDING INSPECTION DEPARTMENT APPROVAL. MECHANICAL UNITS SHALL BE SCREENED IN ACCORDANCE WITH LOCAL CITY AND ZONING ORDINANCES. UTILITY BOXES AND CONDUIT SHALL BE PAINTED TO MATCH BUILDING COLOR. ROMAN SIZE, FACE BRICK, WITH 3/8" CONCAVE GROUT. JOINT- MORTAR TO BE MATCHED TO GROUT. CONTRACTOR TO ENSURE METAL PANELS ARE INSTALLED IN ACCORDANCE WITH MANUFACTURERS RECOMMENDATION. SIGN DESIGNED AND FABRICATED BY APPROVED VENDOR TO MEET BRAND STANDARDS. FOR LOCATION ONLY. ALL UTILITY BOXES AND METERS SHALL BE PAINTED TO MATCH SURROUNDING BUILDING FACADE. FINAL SIGN DESIGN TO BE DRAFTER BY THIRD PARTY CONTRACTOR TO ENSURE FINAL SIGN PACKAGE IS SUBMITTED APPROVED BY THE BRAND.	NORTH ELEVATION OVERALL - 5,454 TOTAL SQ. FT. 268 SQ. FT. - GLAZING 5,186 SQ. FT. - MASONRY MATERIALS <ul style="list-style-type: none">EIFSSTONEMASONRY COMPOSITE PANELS
EI-1	EIFS - "SW7003 - TOQUE WHITE		EAST ELEVATION OVERALL - 16,636 TOTAL SQ. FT. 3,622 SQ. FT. - GLAZING 12,391 SQ. FT. - MASONRY MATERIALS <ul style="list-style-type: none">EIFSSTONEMASONRY COMPOSITE PANELS
EI-2	EIFS - "SW7054 - MODERN GREY		623 SQ. FT. - METAL PANEL (3%) SIGNAGE - 130SF
EI-3	EIFS - "SW7047 PORPOISE"		WEST ELEVATION OVERALL - 18,561 TOTAL SQ. FT. 3,063 SQ. FT. - GLAZING 13,041 SQ. FT. - MASONRY MATERIALS <ul style="list-style-type: none">EIFSSTONEMASONRY COMPOSITE PANELS
MP-1	EN-V VS SERIES METAL PANEL - MUSKET GREY		583 SQ. FT. - METAL PANEL (9%) SIGNAGE - 100SF
LF-1	LOUVER FINISH - DARK BRONZE TO MATCH STOREFRONT		457 SQ. FT. - METAL PANEL (2.7%) SIGNAGE - 148SF
AF-1	ALUMINIUM PARAPET FLASHING TO MATCH STOREFRONT		
GL	EXTERIOR WINDOWS: STOREFRONT WINDOW SYSTEM		
SF	STOREFRONT - KAWNEER - "DARK BRONZE #40"		
WS-1	CORONADO - BARN WOOD STONE - RUSTIC FARMHOUSE		



SITE LOCATION

AC HOTEL - BY MARRIOTT

PD-221R3R5-HC, LOT 1R-BR, BLK C DUKE LESLEY (AC BY MARRIOTT)
CITY OF COPPELL
DALLAS COUNTY, TEXAS 75019

OWNER
WHITESTONE HOSPITALITY, LLC
972.600.8162

PREPARED BY:
TYPE-SIX DESIGN AND DEVELOPMENT
PROJECT CONTACT: CONNOR WALKER, AIA
920 SOUTH MAIN STREET, SUITE 150
GRAPEVINE, TEXAS 76051

SUBMITTAL DATE: 18 AUGUST 2025

TYPE-SIX

TYPE-SIX
DEVELOPMENT SERVICES, LLC
910 SOUTH MAIN STREET #150
GRAPEVINE, TEXAS 76054
972.677.9075

AC DALLAS COPPELL DFW AIRPORT NORTH
WHITESTONE HOSPITALITY
1543 S BELT LINE ROAD
COPPELL, TEXAS

PROJECT # 24021

ARCHITECT		
D. HAYES HINKLE		
ISSUE DATE		
8.18.2025		
ISSUED FOR		
REVIEW		

#	Revision	Date
SHEET NAME		
BUILDING ELEVATIONS		
SHEET NUMBER		
A5.02		

