

KEYED NOTES FOR PARTIAL PLAN:

- 1

EXISTING CONCRETE WHEEL STOPS.
- 2

NEW STEEL BOLLARDS.
- 3

NEW PAPER BAND—SAWCUT EXISTING CONCRETE PAVING TO CREATE A TRENCH TO RUN IRRIGATION TO THE PLANTERS.
- 4

EXISTING CONCRETE CURB.
- 5

EXISTING CONCRETE CURB AND WALK TO BE REMOVED TO ACCOMMODATE NEW DRIVE-THRU LANE.
- 6

EXISTING POLE-MOUNTED ACCESSIBLE PARKING SIGNS.
- 7

EXISTING ACCESSIBLE CURB RAMP.
- 8

NEW INTERNAL COLOR CONCRETE BAND—SAWCUT EXISTING CONCRETE PAVING TO CREATE A TRENCH TO RUN IRRIGATION TO THE PLANTER.
- 9

NEW OPEN-SIDED FABRIC AWNINGS WITH ALUMINUM TUBE FRAMING ABOVE.
- 10

EXISTING EPS ARCH ABOVE.
- 11

NEW CONCRETE CURB—INDICATED BY SHADING.
- 12

NEW GLAZED CERAMIC PLANTERS WITH IRRIGATION LINES RUN INTO A SEALED OPENING IN BOTTOM OF THE POT.
- 13

EXISTING ALUMINUM STOREFRONT AND ENTRANCE SYSTEM.
- 14

EXISTING ALUMINUM STOREFRONT AND ENTRANCE SYSTEM TO BE REMOVED.
- 15

NEW WALL-MOUNTED PAINTED STEEL TUBE TRELLISES.
- 16

EXISTING TENANT DEMISING WALLS.
- 17

NEW SAWCUT CONTROL JOINTS IN EXISTING CONCRETE SLAB OR WALK AS INDICATED.
- 18

NEW ALUMINUM STOREFRONT AND ENTRANCE SYSTEM WITH 1" INSULATING GLASS ASSEMBLIES TO MATCH EXISTING CONSTRUCTION UNDER NEW COVERED PATIO WITH EPS SOFTI—INCLUDE THREE RECESSED LED DOWNLIGHTS AND A CEILING FAN.
- 19

NEW 42" HIGH PAINTED STEEL TUBE AND BAR GUARDRAIL TO MATCH PHASE I.

KEYED NOTES FOR ELEVATIONS:

- 1

EXISTING EPS CORNICE AND ARCHES.
- 2

EXISTING MASONRY EXTERIOR WALLS.
- 3

NEW ACCENT PAINT ON EXISTING EPS FASCIA.
- 4

NEW OPEN-SIDED FABRIC AWNINGS WITH ALUMINUM TUBE FRAMING.
- 5

EXISTING WALL MOUNTED SCONCES.
- 6

NEW WALL-MOUNTED PAINTED STEEL TUBE TRELLISES.
- 7

NEW ALUMINUM STOREFRONT AND ENTRANCE SYSTEM WITH 1" INSULATING GLASS ASSEMBLIES BEYOND PATIO TO MATCH EXISTING CONSTRUCTION UNDER NEW COVERED PATIO WITH EPS SOFTI—INCLUDE THREE RECESSED LED DOWNLIGHTS AND A CEILING FAN.
- 8

NEW GLAZED CERAMIC PLANTERS WITH IRRIGATION LINES RUN INTO A SEALED OPENING IN THE BOTTOM OF THE POT.
- 9

NEW 42" HIGH PAINTED STEEL TUBE AND BAR GUARDRAIL TO MATCH PHASE I DESIGN.
- 10

NEW ALUMINUM DRIVE-UP WINDOW ASSEMBLY WITH AIR CURTAIN.
- 11

EXISTING ALUMINUM STOREFRONT AND ENTRANCE SYSTEM AND GLAZING.
- 12

NEW WALL-MOUNTED LIGHTING FIXTURES.

NEW MATERIAL SPECIFICATIONS:

- BRICK PAPER –

ENDICOTT CLAY PRODUCTS CO.

4 X 8 MEDIUM IRONSPT 77
- CONCRETE BANDING – TO MATCH SHERWIN WILLIAMS

SW 6143 "BASKET BEIGE"
- ACCENT PAINT –

TO MATCH SHERWIN WILLIAMS

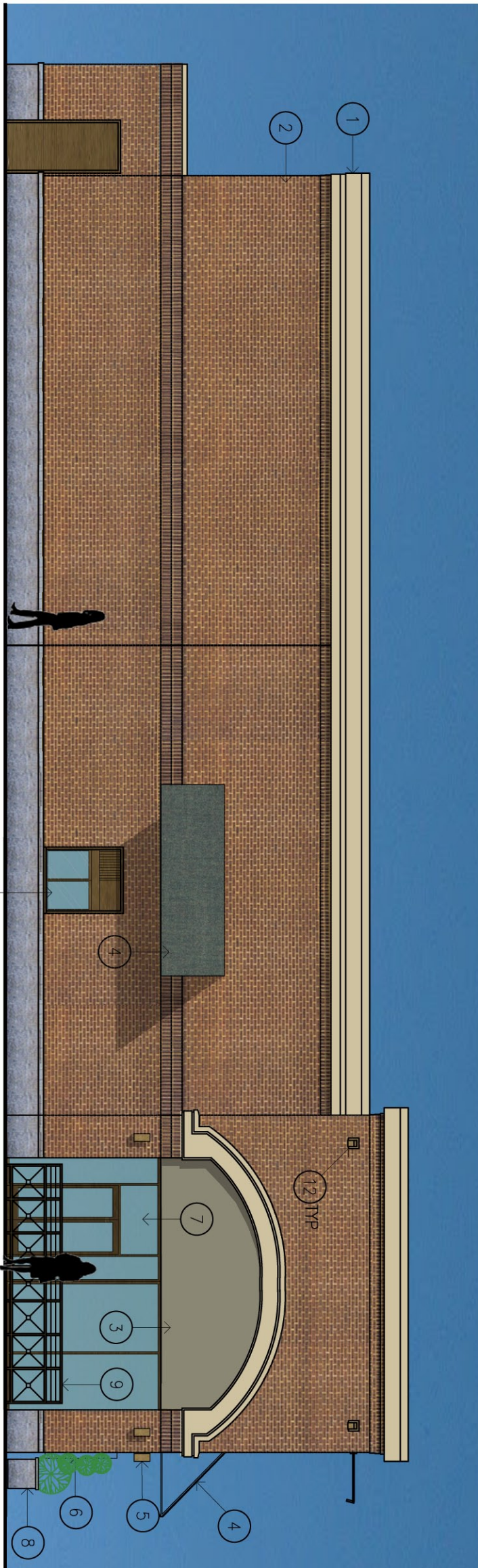
SW 6165 "CONNECTED GRAY"
- FABRIC AWNING –

SUMIBRELLA 4571 "TEEN"

PARTIAL PLAN



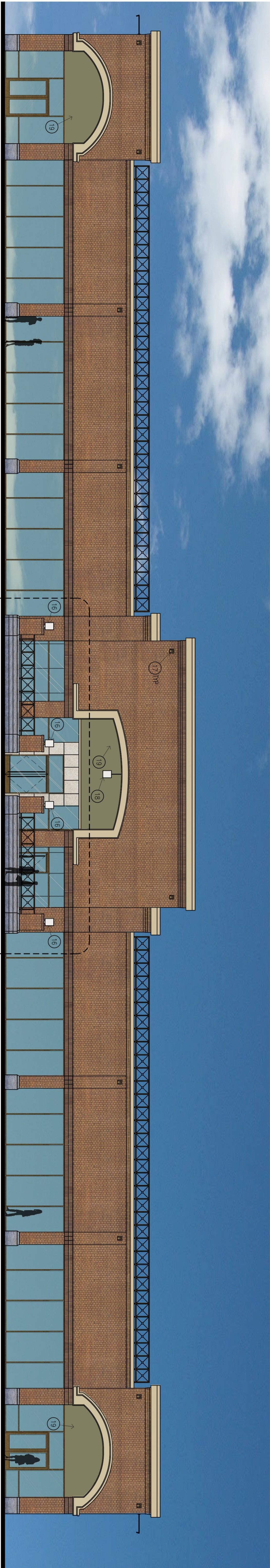
ELEVATION A



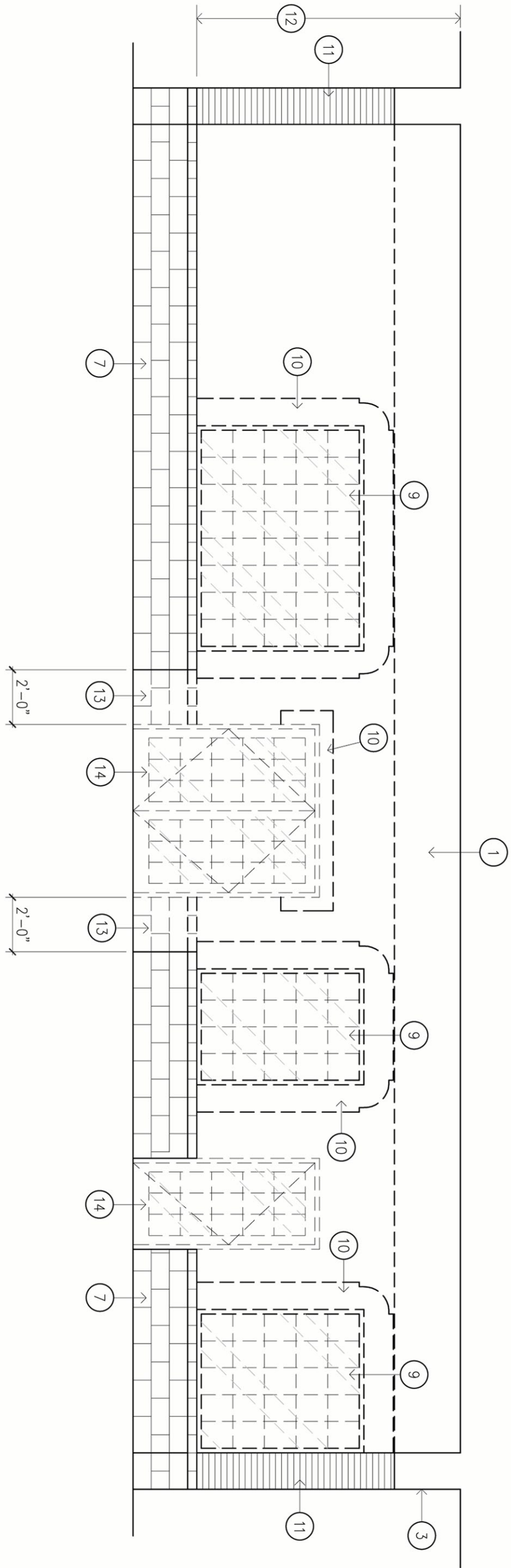
ELEVATION B



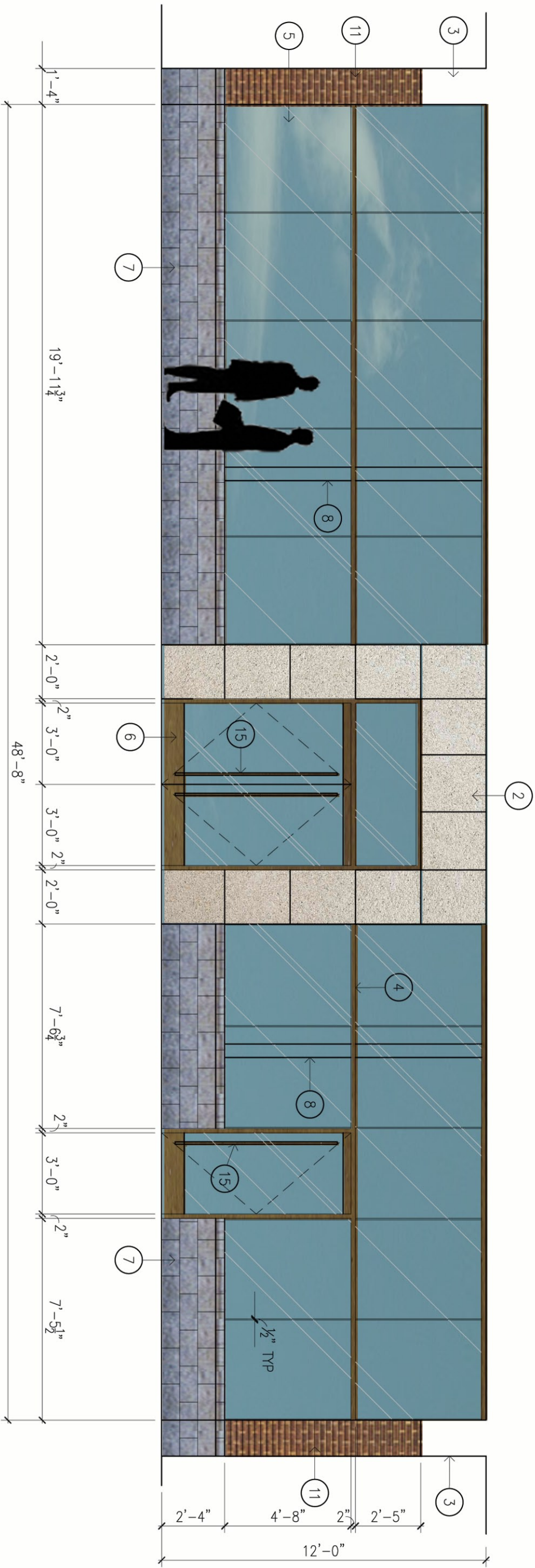
Exhibit D
page 1 of 2



ELEVATION

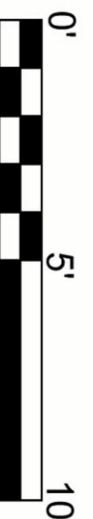


PARTIAL ENLARGED ELEVATION (DEMO)



PARTIAL ENLARGED ELEVATION (NEW)

A



NEW MATERIAL SPECIFICATIONS:

ACCENT PAINT - TO MATCH SHERWIN WILLIAMS SW 6165 "CONNECTED GRAY"

ELEVATION KEYED NOTES:

- EXISTING EIFS BULKHEAD TO BE REMOVED.
- NEW LIMESTONE ENTRANCE SURROUND.
- EXISTING EIFS BULKHEAD TO REMAIN.
- NEW BRONZE ANODIZED ALUMINUM FRAMING.
- NEW TEMPERED GLASS STOREFRONT WITH SILICONE BUTT JOINTS.
- NEW TEMPERED GLASS ENTRANCES WITH CONTINUOUS TOP AND BOTTOM RAILS.
- EXISTING TEXTURED CONCRETE BLOCK WAINSCOT TO REMAIN.
- EXISTING STEEL COLUMNS BEYOND.
- EXISTING WINDOWS AND TRIM TO BE REMOVED.
- EXISTING EIFS SURROUND TO BE REMOVED.
- EXISTING BRICK PLASTERS TO REMAIN.
- PORTION OF EXISTING EIFS EXTERIOR WALL TO BE REMOVED.
- PORTION OF EXISTING TEXTURED CONCRETE BLOCK WAINSCOT TO BE REMOVED.
- EXISTING DOORS AND FRAMES TO BE REMOVED.
- NEW ALUMINUM DOOR PULLS.
- REPLACE EXISTING LANTERN FIXTURES WITH NEW LIGHTING FIXTURES.
- NEW WALL-MOUNTED LIGHTING FIXTURES.
- NEW PENDANT-SUSPENDED LIGHTING FIXTURE.
- NEW ACCENT PAINT ON EXISTING EIFS FASCIA.

PRELIMINARY

FOR INTERIM USE ONLY
NOT FOR BIDDING
PERMITTING OR CONSTRUCTION

DONALD F. SOPRANZI, AIA, #8898

PHASE I

A-3

OF 6 SHEETS

SEPTEMBER 27, 2017