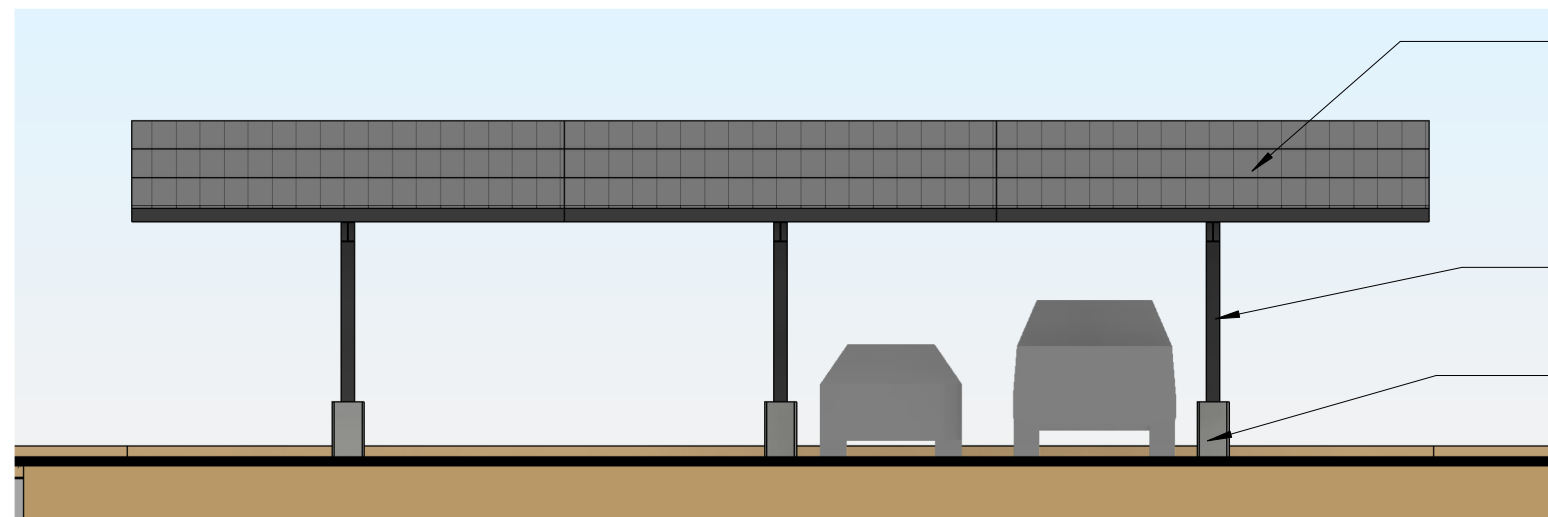
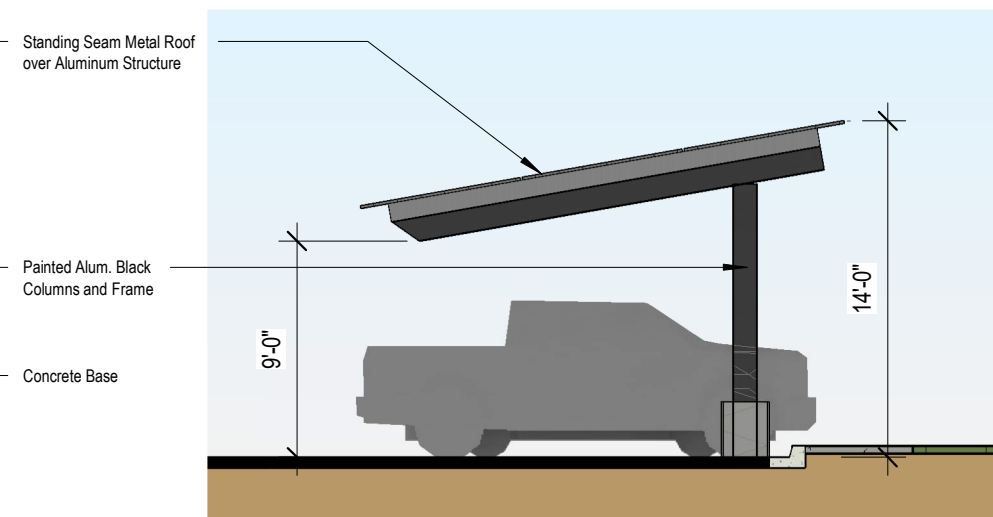


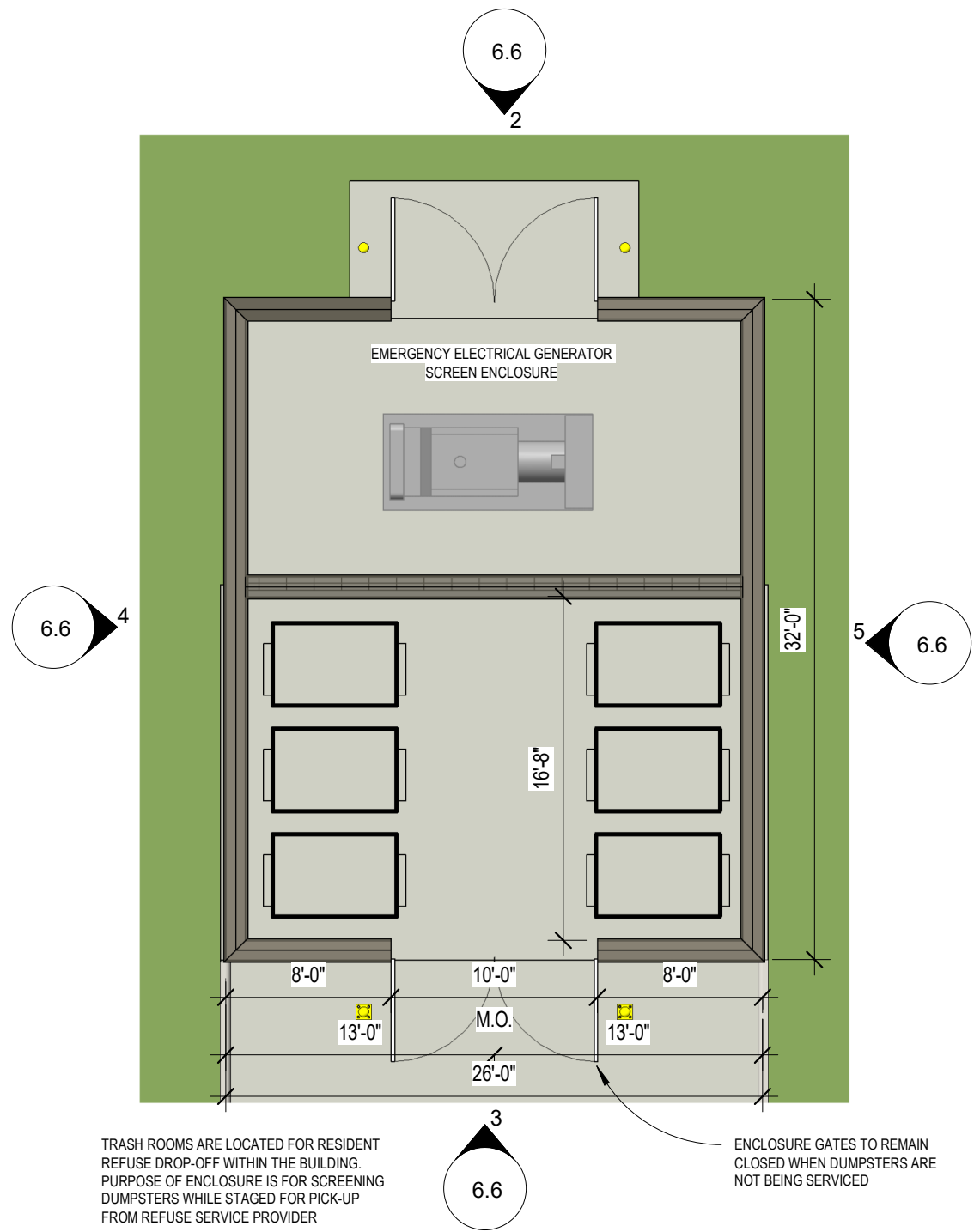
1 TYPICAL CARPORT PLAN
1/8" = 1'-0"



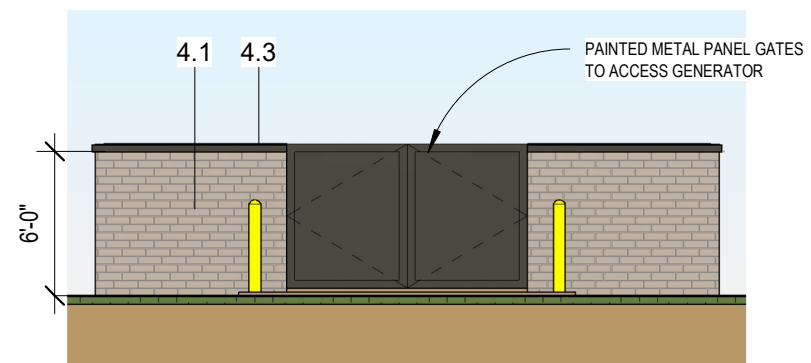
3 CARPORT REAR ELEVATION
1/8" = 1'-0"



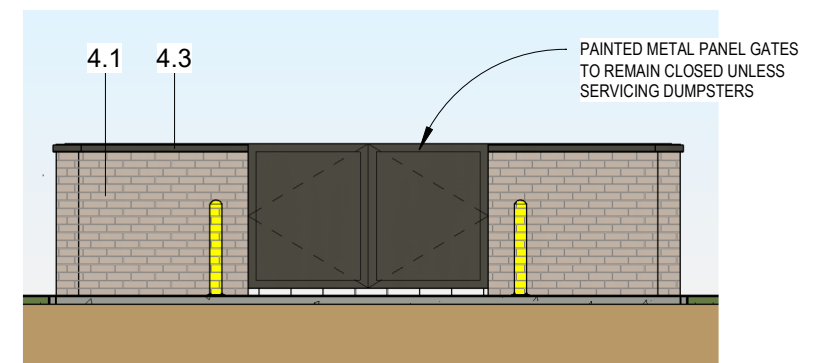
2 CARPORT SIDE ELEVATION
1/8" = 1'-0"



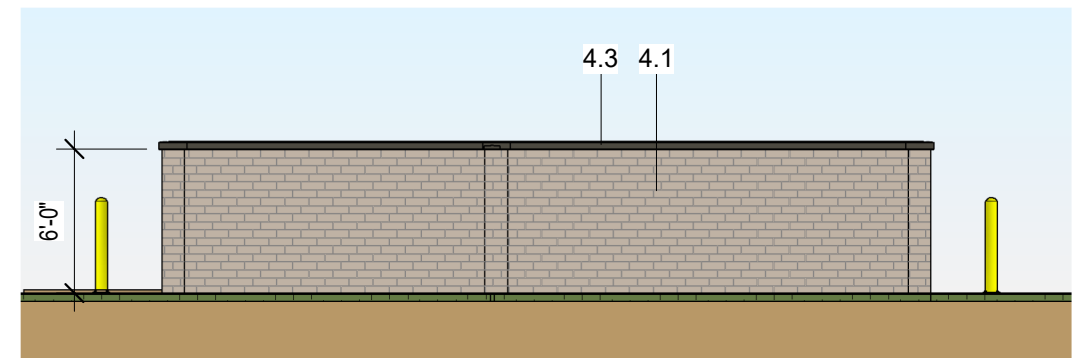
1 TRASH ENCLOSURE/GENERATOR ENCLOSURE
1/8" = 1'-0"



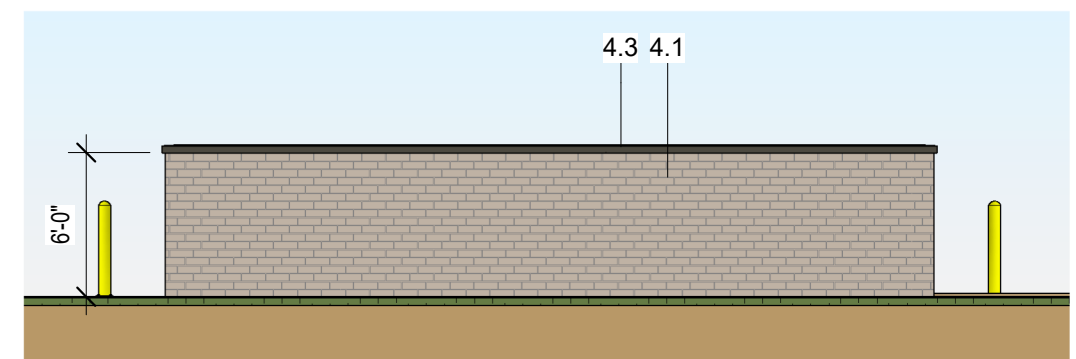
2 Trash Enclosure North
1/8" = 1'-0"



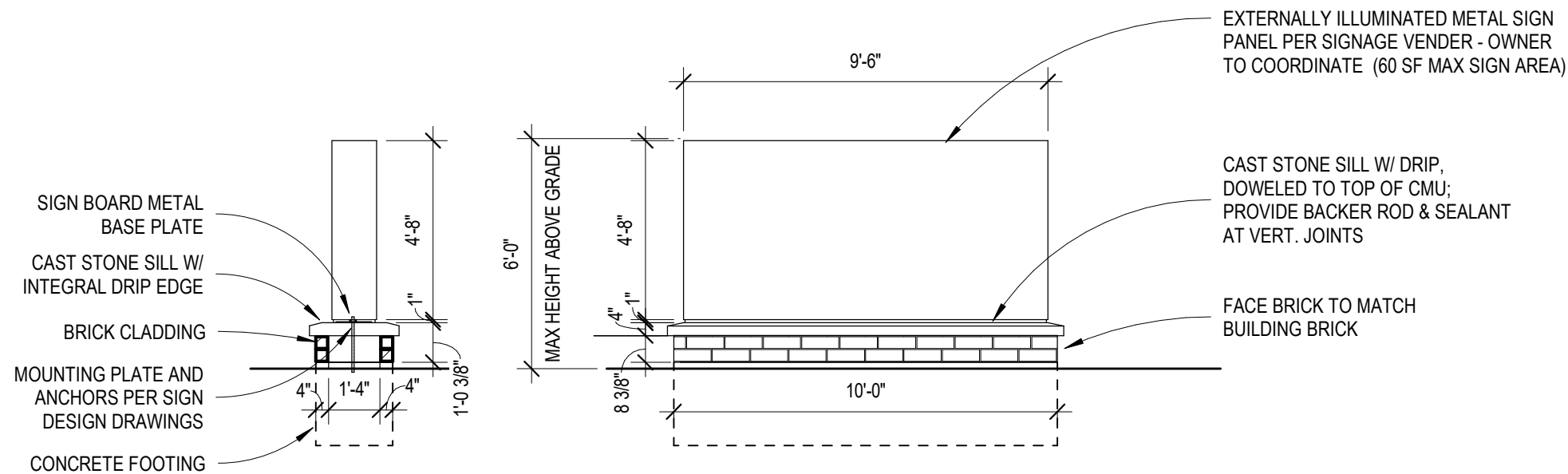
3 Trash Enclosure South
1/8" = 1'-0"



4 Trash Enclosure West
1/8" = 1'-0"



5 Trash Enclosure East
1/8" = 1'-0"



① Monument Sign
1/4" = 1'-0"



EXTERIOR BUILDING ACCENT LIGHTING



EXTERIOR WALL PACK LIGHTING AT
SERVICE DOOR OR SECURITY LOCATIONS



EXTERIOR LIGHT AT UNIT PATIOS

Type P1, P2, P3:



EXTERIOR PARKING POLE LIGHT (25'-0" POLE)

② Building Light Fixtures
1 1/2" = 1'-0"

PHOTMETRIC SITE PLAN AND PARKING LOT LIGHTING TO BE DEVELOPED WITH GLARE AND LIGHTING STANDARDS NOTED IN CHAPTER 12, ARTICLE 36 OF THE CITY OF COPPELL ZONING CODE