

(A)	Monument Sign
(B)	48" Channel Letters
(C)	W9 Canopy Signs

Site Plan
1" = 50'-0"



5300 Shad Road, Jacksonville, FL. 32257 • 904.268.4681
2301 Ohio Dr, Plano, TX. 32257 • 972.905.9450



7-Eleven #1043547
890 S. Denton Tap Road
Coppell, Texas 75019

SVE7128-R5

F:\Customers\7 Eleven\Art
\SVE7128-R5 #1043547.cdr

date:	rev.	description:	designer:
07.11.18	00	Original Concept	mh
07.17.18	R1	Revised sign B letter height & changed to standard canopy.	mh
07.26.18	R2	Revised sign A to non-illuminated, revised fuel canopy.	mh
08.17.18	R3	Revised to SEI brand fuel.	mh
10.03.18	R4	Revised sign A, site plan & building elevations.	mh
10.08.18	R5	Revised sign A, removed window signs from exhibit.	mh

CDR: bb
Designer: mh

DPM: aa
RCC: aa
RER: aa

Page: 1

customer approval

date:



Complies with
UL 48
CSA C22.2 No.207

THE SIGNS ON THESE PAGES HAVE BEEN DESIGNED TO MEET OR EXCEED ALL APPLICABLE CODES OR REQUIREMENTS OF THE NEC-2014 AND OR THE 2014 FBC AND OR THE 2007 SFBC

NIGHT VIEW



NIGHT VIEW

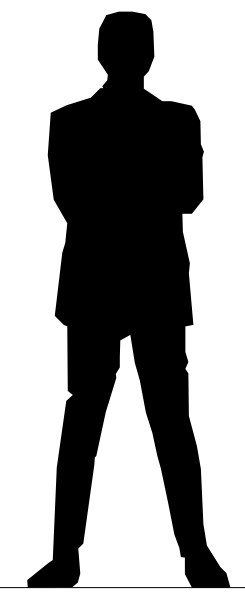
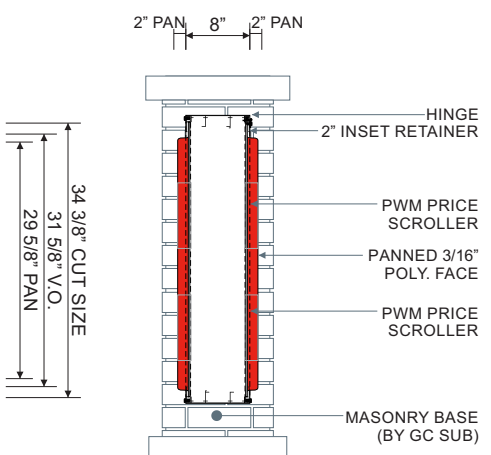
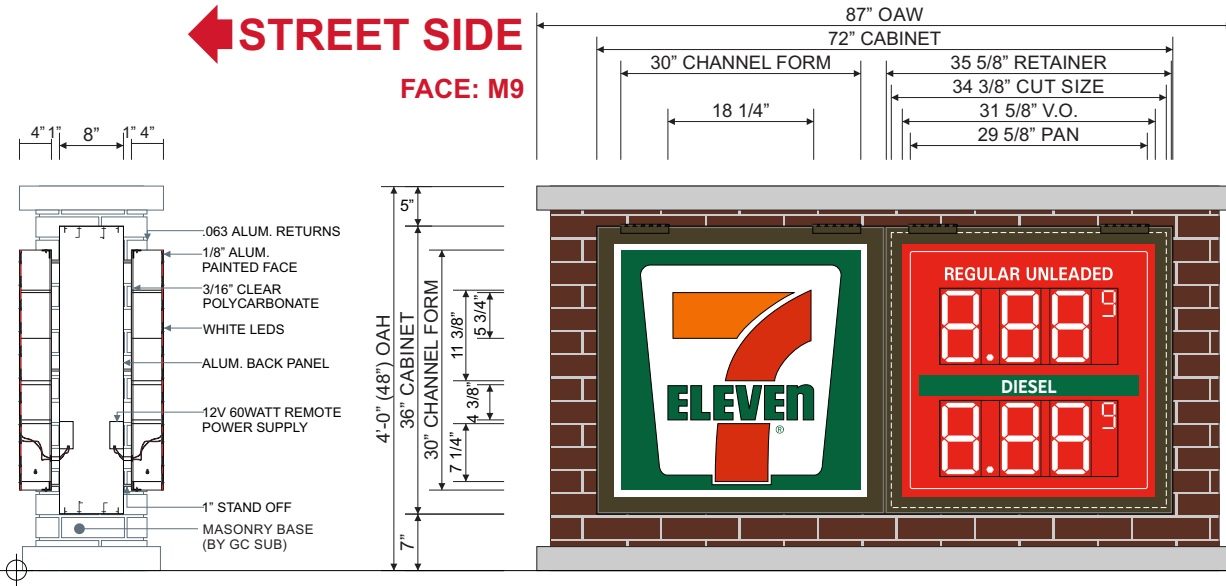
NOTE: GAS PRICE CABINET TO BE EXTERNALLY ILLUMINATED.
NOTE: ALL/ANY EXTERNAL ILLUMINATION IS TO BE PROVIDED BY ELECTRICAL CONTRACTOR.
NOTE: TYPE OF EXTERNAL LIGHTING IS TBD.

Total Sign Square footage Calculations:	
Allowed:	40.0 sqft
Proposed:	29.1 sqft

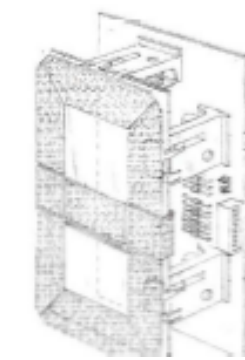
Overall Height:	
Allowed:	4 Feet
Proposed:	4 Feet

SetBacks:	
Requirements:	10 Feet
Proposed:	10 Feet

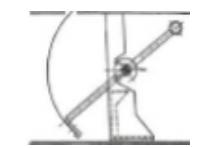
← STREET SIDE
FACE: M9



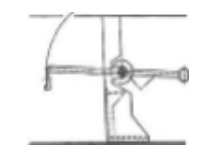
PWM SEGMENT ELECTRONIC PRICE UNIT:



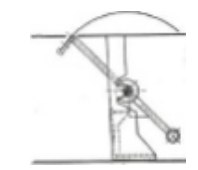
1. Electromagnetic technology involves changing a magnetic field so as to induce an electric current.
2. An electromagnetic field converts the mechanical energy into electrical energy.
3. PWM uses this technology for their segment signs.
4. Power is only required to change the data displayed.
5. Inherent magnetic memory in each segment retains the display indefinitely without power being applied.
6. The data on multiple displays can be quickly changed.
7. The light-reflecting segments provide excellent visibility for a wide range of ambient light conditions.
8. Visibility increases with an increase in the ambient light level.
9. Characters are visible from very wide angles.
10. Each segment rotates on a stainless steel pivot for maximum reliability.



1. Heat is a non-issue for electromagnetic signs.
2. In areas where segment signs are exposed to extreme cold, additional heating is required.



- Principles of Operation
1. The drawings LEFT show a rounded panel segment from the top view.
 2. To set a price, meaning to adjust the segments to reflect the desired number, an electronic impulse to the coil creates a magnetic field.
 3. This magnetic field turns the segment in or out.
 4. Each segment moves between the background and display surface plate.



MANUFACTURE & SHIP ONE (1) M9 / L9 D/F NON-ILLUMINATED SIGN CABINET WITH REVERSE HALO-ILLUMINATED CHANNEL LOGO FORMS. 8" DEEP EXTRUDED ALUM. CABINET W/ 2" INSET HINGED RETAINERS TO BE PAINTED DURANODIC BRONZE. 2" INSET RETAINERS TO BE HINGED ON ONE SIDE OF CABINET.

LOGO CHANNEL FORMS:
4" DEEP .063 ALUMINUM RETURNS & .125 ALUMINUM FACES W/ 3/16" THICK CLEAR POLYCARBONATE BACKS. FORMS PAINTED PMS 021 ORANGE, PMS 485 RED, PMS 349 GREEN. RETURNS OF FORMS PAINTED TO MATCH FACE COLOR. "®" TO BE 3M 3630-26 GREEN VINYL APPLIED FIRST SURFACE. LETTERS TO BE REVERSE HALO ILLUMINATED W/ WHITE LEDS. LETTERS PIN MOUNTED 1" OFF ALUMINUM CABINET FACE/PANEL THAT IS PAINTED DURANODIC BRONZE & PMS WHITE.

CUSTOM L9 FACES: 3/16" THICK PAN FORMED CLEAR POLYCARBONATE FACES BACK SPRAYED PMS 485 RED THEN PMS WHITE.

PROPOSED WITH PWM 9" NON-ILLUMINATED SEGMENT ELECTRONIC PRICE UNITS.

VINYL SPECS: 3M 3630-26 GREEN
PAINT SPECS: DURANODIC BRONZE, PMS 021 ORANGE, PMS 485 RED, PMS 349 GREEN, PMS WHITE

NOTE: MONUMENT SIGN SHALL BE CONSTRUCTED OF THE SAME PRIMARY MASONRY MATERIALS AS THE FRONT BUILDING FACADE OR THE PRINCIPAL OR MAIN BUILDING ON THE SAME LOT OR SHALL BE STONE OR BRICK AND SHALL BE SIMILAR ARCHITECTURAL STYLE.

NOTE: ALL BRICK/MASONRY TO BE PROVIDED BY GC'S SUBCONTRACTOR.

7-ELEVEN LOGO DIMENSIONS:
OAH: 27 1/2"
OAL: 25 1/16"

Front Elevation & Side Detail - Custom Monument Sign Structure - Sign A
1/2" = 1'-0"

Display Square Footage (Cabinet): 18.0



5300 Shad Road, Jacksonville, FL. 32257 • 904.268.4681
2301 Ohio Dr, Plano, TX. 32257 • 972.905.9450



7-Eleven #1043547
890 S. Denton Tap Road
Coppell, Texas 75019

SVE7128-R5

F:\Customers\7 Eleven\Art
\SVE7128-R5 #1043547.cdr

date:	rev.	description:	designer:
07.11.18	00	Original Concept	mh
07.17.18	R1	Revised sign B letter height & changed to standard canopy.	mh
07.26.18	R2	Revised sign A to non-illuminated, revised fuel canopy.	mh
08.17.18	R3	Revised to SEI brand fuel.	mh
10.03.18	R4	Revised sign A, site plan & building elevations.	mh
10.08.18	R5	Revised sign A, removed window signs from exhibit.	mh

CDR: bb
Designer: mh

DPM: aa
RCC: aa
RER: aa

Page: 2

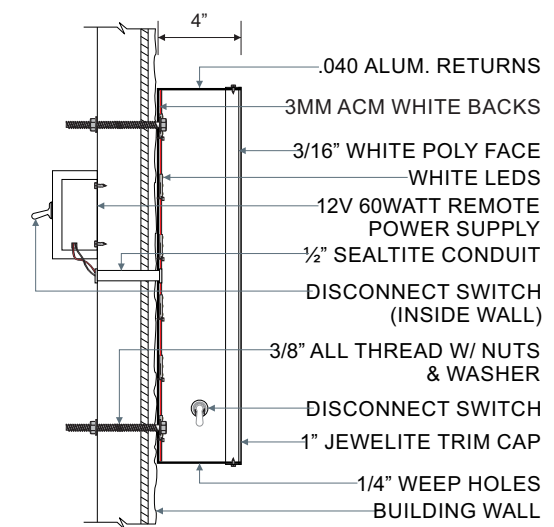
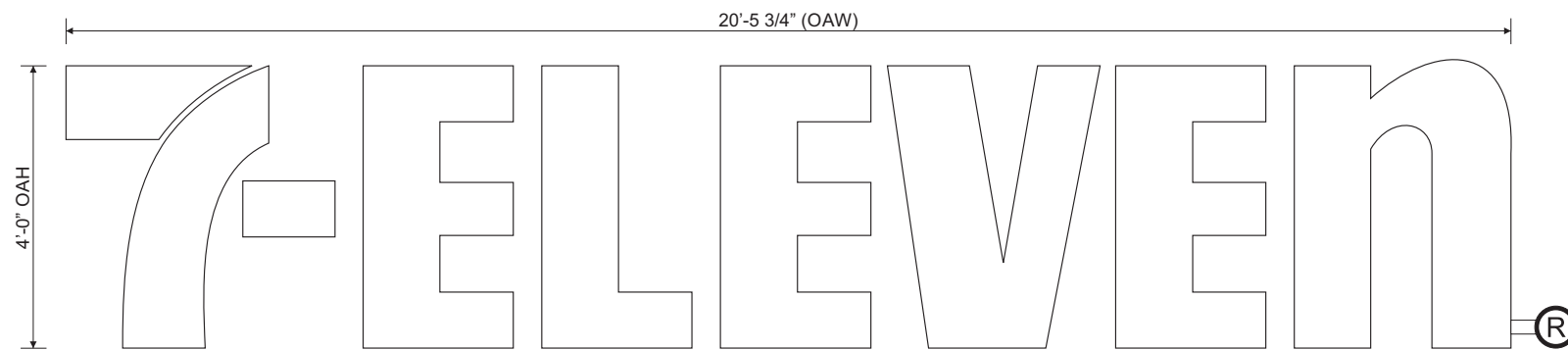
customer approval

date:



THE SIGNS ON THESE PAGES HAVE BEEN DESIGNED TO MEET OR EXCEED ALL APPLICABLE CODES OR REQUIREMENTS OF THE NEC-2014 AND OR THE 2014 FBC AND OR THE 2007 SFBC

Exhibit E
2 of 5



MANUFACTURE & SHIP ONE (1) SET OF **CUSTOM 48" LETTER HEIGHT** INTERNALLY ILLUMINATED REMOTE CHANNEL LETTERS.
 3/16" THICK WHITE ACRYLIC FACES.
 4" DEEP ALUMINUM RETURNS PRE-PAINTED **313 DURANODIC BRONZE**.
 1" **DURANODIC BRONZE**(JEWELITE) TRIM CAP.
 LETTERS TO BE INTERNALLY ILLUMINATED W/ WHITE LEDS.

PAINT SPECS: 313 DURANODIC BRONZE

NOTE: LOGOS IN ANY COLOR SHALL NOT EXCEED 20% OF THE AREA OF THE SIGN.

Front View & Side Mounting Detail - **Custom 48" Letter Height** - Internally Illuminated Remote Channel Letters - **Sign B**

3/8" = 1'-0"

Display Square Footage: **87.5**

Exhibit E
3 of 5



5300 Shad Road, Jacksonville, FL. 32257 • 904.268.4681
 2301 Ohio Dr, Plano, TX. 32257 • 972.905.9450



7-Eleven #1043547
 890 S. Denton Tap Road
 Coppell, Texas 75019

SVE7128-R5

F:\Customers\7 Eleven\Art
 \SVE7128-R5 #1043547.cdr

date:	rev.	description:	designer:
07.11.18	00	Original Concept	mh
07.17.18	R1	Revised sign B letter height & changed to standard canopy.	mh
07.26.18	R2	Revised sign A to non-illuminated, revised fuel canopy.	mh
08.17.18	R3	Revised to SEI brand fuel.	mh
10.03.18	R4	Revised sign A, site plan & building elevations.	mh
10.08.18	R5	Revised sign A, removed window signs from exhibit.	mh

CDR: bb
 Designer: mh

DPM: aa
 RCC: aa
 RER: aa

Page: 3

customer approval

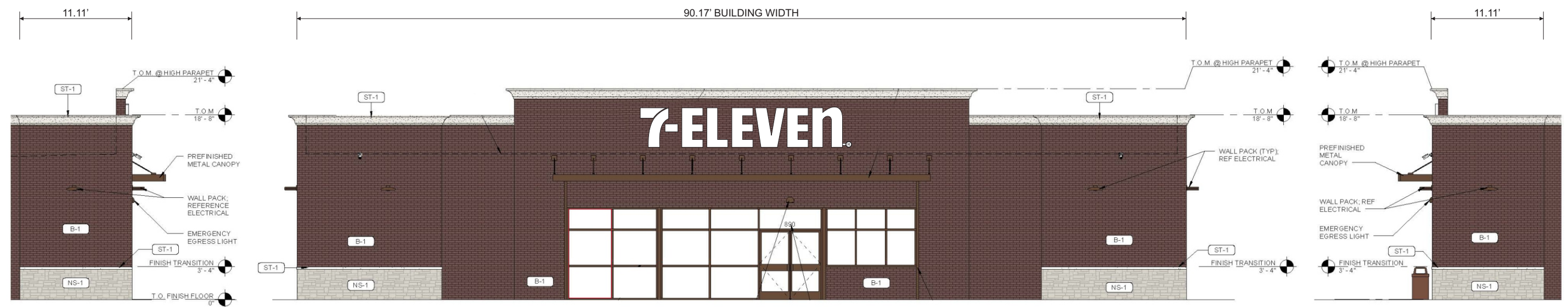
date:



Complies with
 UL 48
 CSA C22.2 No.207

THE SIGNS ON THESE PAGES HAVE BEEN DESIGNED TO MEET OR EXCEED ALL APPLICABLE CODES OR REQUIREMENTS OF THE NEC-2014 AND OR THE 2014 FBC AND OR THE 2007 SFBC

Square footage Calculations:	
Allowed:	90.0 sqft
Proposed:	87.5 sqft



Storefront & Side Corner Elevation - Sign B
3/32"=1'-0"

Exhibit E
4 of 5



5300 Shad Road, Jacksonville, FL. 32257 • 904.268.4681
2301 Ohio Dr, Plano, TX. 32257 • 972.905.9450



7-Eleven #1043547
890 S. Denton Tap Road
Coppell, Texas 75019

SVE7128-R5

F:\Customers\7 Eleven\Art
\SVE7128-R5 #1043547.cdr

date:	rev.	description:	designer:
07.11.18	00	Original Concept	mh
07.17.18	R1	Revised sign B letter height & changed to standard canopy.	mh
07.26.18	R2	Revised sign A to non-illuminated, revised fuel canopy.	mh
08.17.18	R3	Revised to SEI brand fuel.	mh
10.03.18	R4	Revised sign A, site plan & building elevations.	mh
10.08.18	R5	Revised sign A, removed window signs from exhibit.	mh

CDR: bb
Designer: mh

DPM: aa
RCC: aa
RER: aa

Page: 4

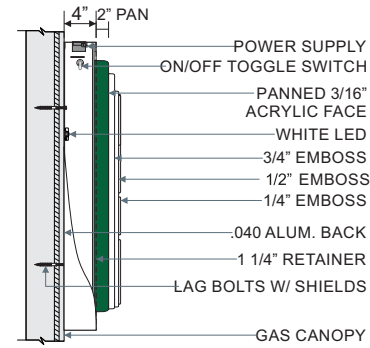
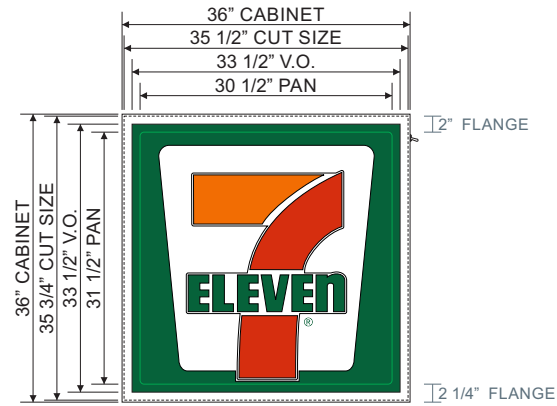
customer approval

date:



Complies with
UL 48
CSA C22.2 No.207

THE SIGNS ON THESE PAGES HAVE BEEN DESIGNED TO MEET OR EXCEED ALL APPLICABLE CODES OR REQUIREMENTS OF THE NEC-2014 AND OR THE 2014 FBC AND OR THE 2007 SFBC



MANUFACTURE & SHIP THREE (3) **W9 (00000000)** S/F INTERNALLY ILLUMINATED CANOPY SIGN CABINETS. 3/16" THICK PAN FORMED & EMBOSSED WHITE ACRYLIC FACE W/ TRANSLUCENT VINYL GRAPHICS APPLIED FIRST SURFACE. 4" DEEP EXTRUDED ALUM. CABINET W/ 1 1/4" RETAINERS TO BE PAINTED **WHITE**. CABINET TO BE INTERNALLY ILLUMINATED W/ WHITE LEDS.

VINYL SPECS: 3M 3630-44 ORANGE, 3M 3630-33 RED, 3M 3630-26 GREEN
 PAINT SPECS: PMS WHITE

NOTE: SIGN TO BE INSTALLED 2'-0" FROM LEFT EDGE OF GAS CANOPY.

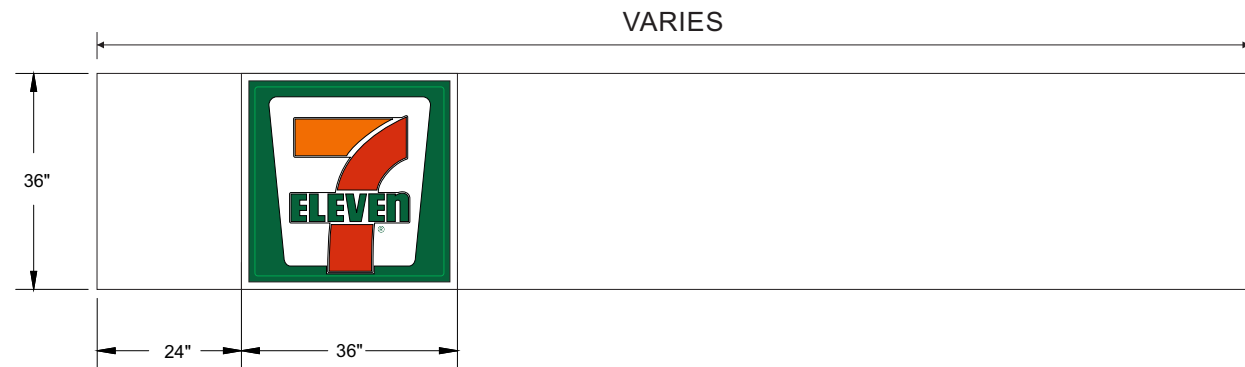
7-ELEVEN LOGO DIMENSIONS:
 OAH: 29 1/2"
 OAL: 27"

Face & Side Detail - **W9 (00000000) Canopy Sign Cabinet - Sign C**

1/2" = 1'-0"

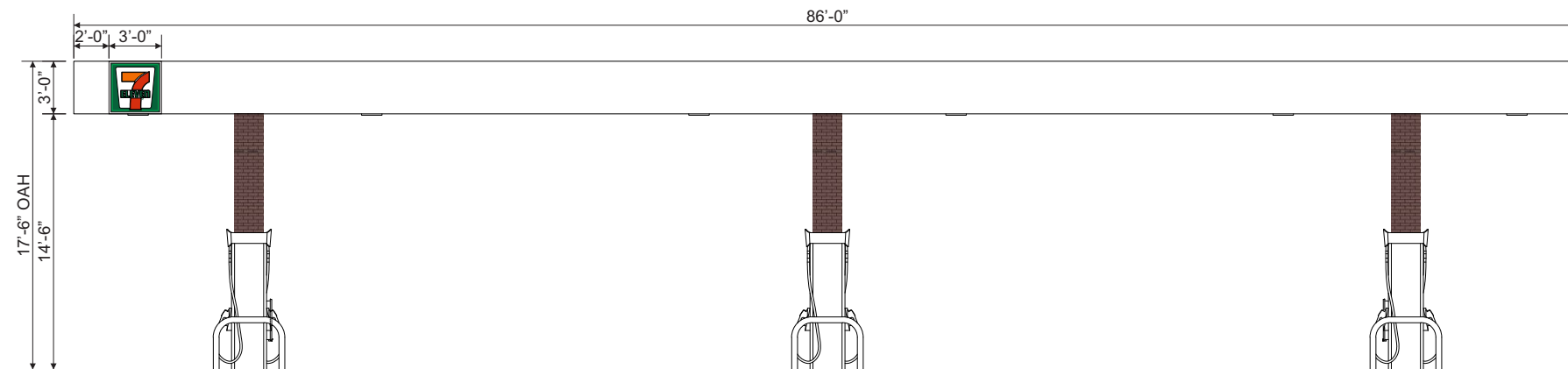
Display Square Footage(Cabinet): **9.0**

NOTE: PER CITY CODE TRI-STRIPES ARE NOT ALLOWED.

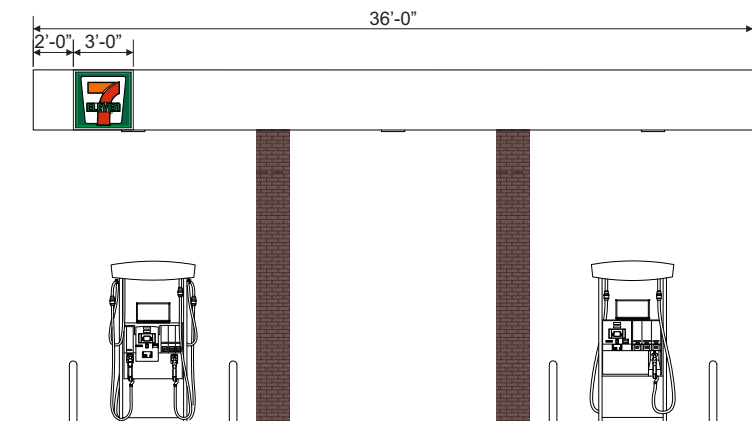


Front Elevation - **36" Canopy Height - Sign And Graphics Layout**

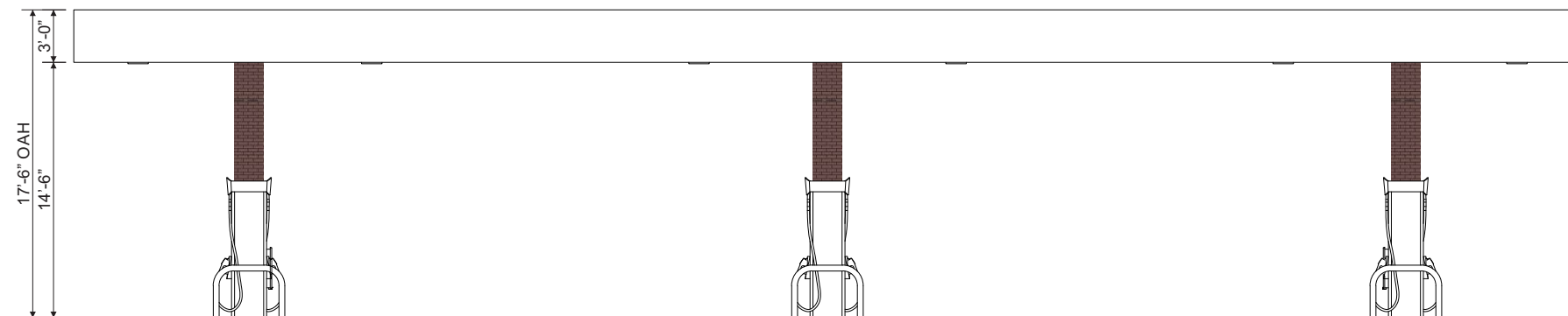
3/8" = 1'-0"



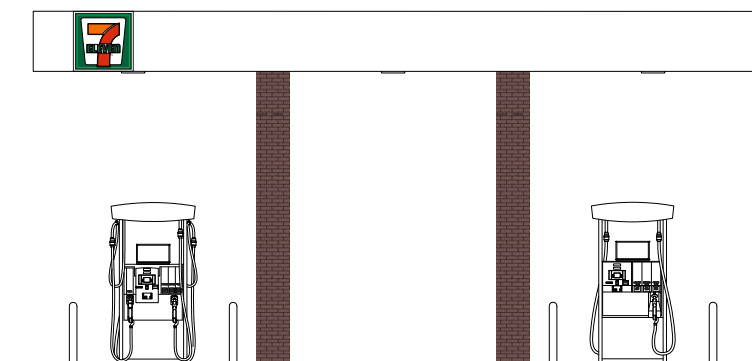
FRONT ELEVATION:



SIDE ELEVATION:



REAR ELEVATION:



SIDE ELEVATION:

Front and Side Elevation (6MPD Stacked Canopy Configuration) - **Sign C**

NTS

harbinger
 sign of the future

5300 Shad Road, Jacksonville, FL, 32257 • 904.268.4681
 2301 Ohio Dr, Plano, TX, 32257 • 972.905.9450



7-Eleven #1043547
 890 S. Denton Tap Road
 Coppell, Texas 75019

SVE7128-R5

F:\Customers\7 Eleven\Art
 \SVE7128-R5 #1043547.cdr

date:	rev.	description:	designer:
07.11.18	00	Original Concept	mh
07.17.18	R1	Revised sign B letter height & changed to standard canopy.	mh
07.26.18	R2	Revised sign A to non-illuminated, revised fuel canopy.	mh
08.17.18	R3	Revised to SEI brand fuel.	mh
10.03.18	R4	Revised sign A, site plan & building elevations.	mh
10.08.18	R5	Revised sign A, removed window signs from exhibit.	mh

CDR: bb
 Designer: mh

DPM: aa
 RCC: aa
 RER: aa

Page: 5

customer approval

date:



Complies with
 UL 48
 CSA C22.2 No.207

THE SIGNS ON THESE PAGES HAVE BEEN DESIGNED TO MEET OR EXCEED ALL APPLICABLE CODES OR REQUIREMENTS OF THE NEC-2014 AND OR THE 2014 FBC AND OR THE 2007 SFBC

THIS DESIGN IS FOR THE SOLE PURPOSE OF ILLUSTRATION & CONCEPT DESIGN. THIS FILE IS NOT TO BE USED FOR PRODUCTION AND/OR FABRICATION. THIS DESIGN IS THE SOLE PROPERTY OF HARBINGER AND MAY NOT BE USED OR DUPLICATED IN ANY FORM WITHOUT THE EXPRESS WRITTEN PERMISSION OF HARBINGER.

Exhibit E
 5 of 5