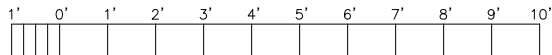


FLOOR PLAN



- 120 VAC
- 120 VAC WITH DUAL USB PORTS
- 120 VAC G.F.I.
- INVERTER
- 12 VDC
- SPARE PLATE
- RJ-45 NETWORK JACK
- RJ-11 TELEPHONE JACK

- HDMI PORT
- VGA PORT
- DB9 JACK
- DB15 JACK
- SPEAKER VOLUME
- TV ANTENNA
- SWITCH

- SURVEILLANCE CAMERA
- EXTERIOR 120 VAC G.F.I.
- CO/SMOKE DETECTOR
- SPEAKER



SOME ITEMS SHOWN MAY BE CUSTOMER SUPPLIED OR OPTIONAL. REFER TO SPECIFICATIONS FOR DETAILS.

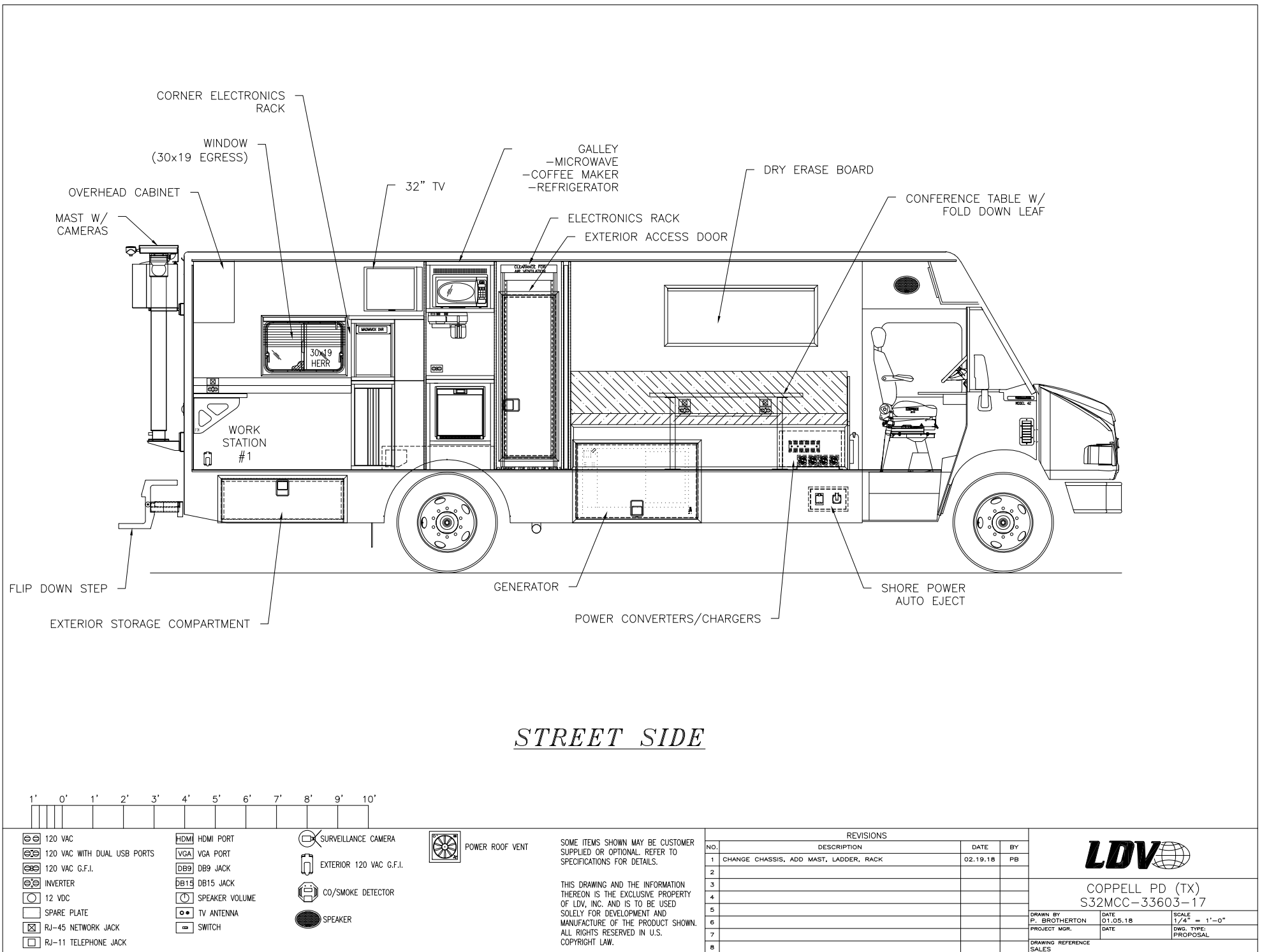
THIS DRAWING AND THE INFORMATION THEREON IS THE EXCLUSIVE PROPERTY OF LDV, INC. AND IS TO BE USED SOLELY FOR DEVELOPMENT AND MANUFACTURE OF THE PRODUCT SHOWN. ALL RIGHTS RESERVED IN U.S. COPYRIGHT LAW.

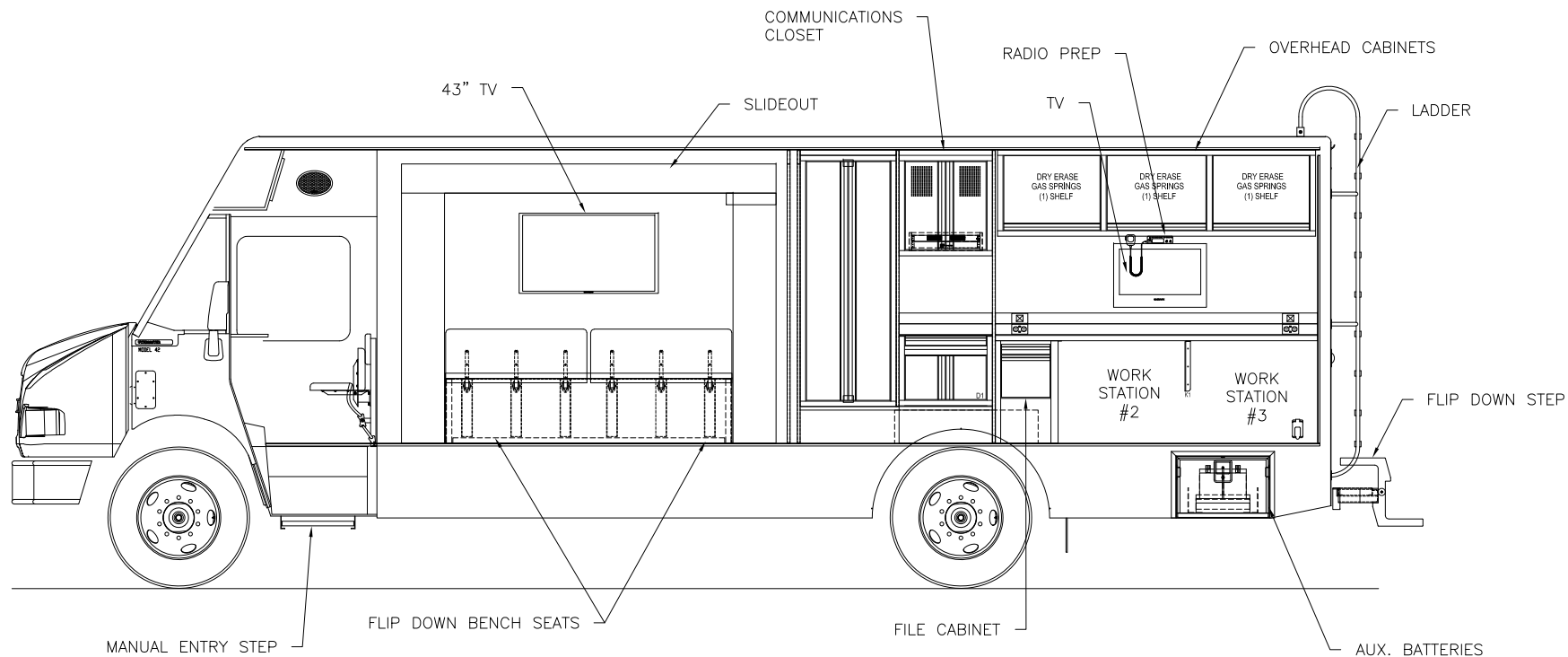
REVISIONS			
NO.	DESCRIPTION	DATE	BY
1	CHANGE CHASSIS, ADD MAST, LADDER, RACK	02.19.18	PB
2			
3			
4			
5			
6			
7			
8			



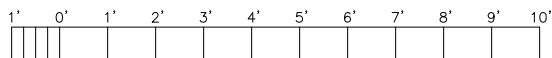
COPPELL PD (TX)
S32MCC-33603-17

DRAWN BY P. BROTHERTON	DATE 01.05.18	SCALE 1/4" = 1'-0"
PROJECT MGR.	DATE	DWG. TYPE PROPOSAL
DRAWING REFERENCE SALES		





CURB SIDE



- 120 VAC
- 120 VAC WITH DUAL USB PORTS
- 120 VAC G.F.I.
- INVERTER
- 12 VDC
- SPARE PLATE
- RJ-45 NETWORK JACK
- RJ-11 TELEPHONE JACK

- HDMI PORT
- VGA PORT
- DB9 JACK
- DB15 JACK
- SPEAKER VOLUME
- TV ANTENNA
- SWITCH

- SURVEILLANCE CAMERA
- EXTERIOR 120 VAC G.F.I.
- CO/SMOKE DETECTOR
- SPEAKER



SOME ITEMS SHOWN MAY BE CUSTOMER SUPPLIED OR OPTIONAL. REFER TO SPECIFICATIONS FOR DETAILS.

THIS DRAWING AND THE INFORMATION THEREON IS THE EXCLUSIVE PROPERTY OF LDV, INC. AND IS TO BE USED SOLELY FOR DEVELOPMENT AND MANUFACTURE OF THE PRODUCT SHOWN. ALL RIGHTS RESERVED IN U.S. COPYRIGHT LAW.

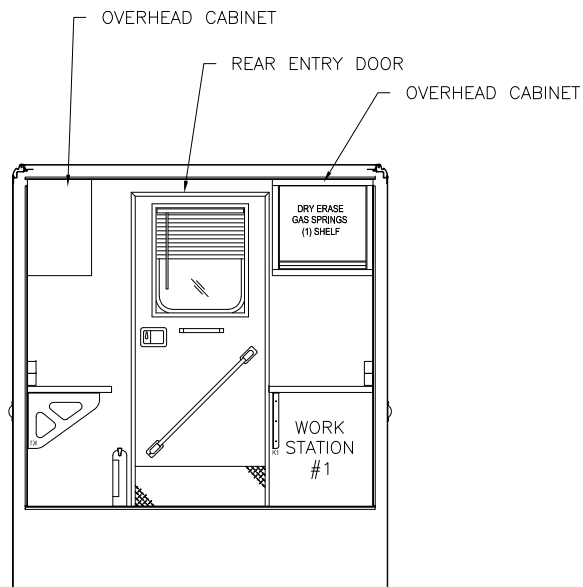
REVISIONS

NO.	DESCRIPTION	DATE	BY
1	CHANGE CHASSIS, ADD MAST, LADDER, RACK	02.19.18	PB
2			
3			
4			
5			
6			
7			
8			

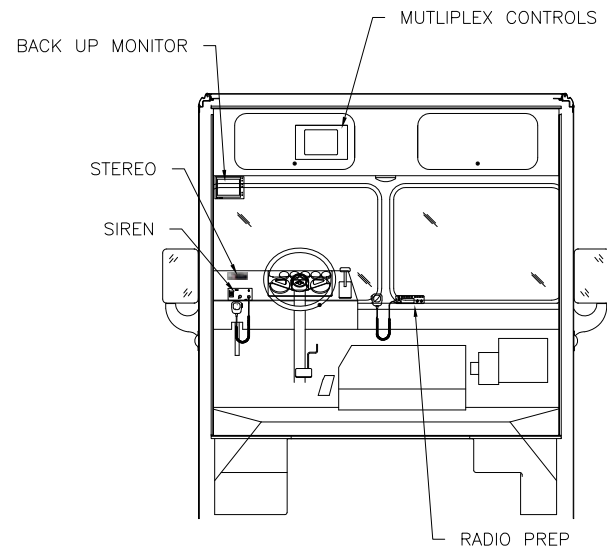


COPPELL PD (TX)
S32MCC-33603-17

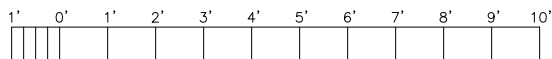
DRAWN BY P. BROTHERTON	DATE 01.05.18	SCALE 1/4" = 1'-0"
PROJECT MGR.	DATE	DWG. TYPE PROPOSAL
DRAWING REFERENCE SALES		



REAR



FRONT



- 120 VAC
- 120 VAC WITH DUAL USB PORTS
- 120 VAC G.F.I.
- INVERTER
- 12 VDC
- SPARE PLATE
- RJ-45 NETWORK JACK
- RJ-11 TELEPHONE JACK

- HDMI PORT
- VGA PORT
- DB9 JACK
- DB15 JACK
- SPEAKER VOLUME
- TV ANTENNA
- SWITCH

- SURVEILLANCE CAMERA
- EXTERIOR 120 VAC G.F.I.
- CO/SMOKE DETECTOR
- SPEAKER



SOME ITEMS SHOWN MAY BE CUSTOMER SUPPLIED OR OPTIONAL. REFER TO SPECIFICATIONS FOR DETAILS.

THIS DRAWING AND THE INFORMATION THEREON IS THE EXCLUSIVE PROPERTY OF LDV, INC. AND IS TO BE USED SOLELY FOR DEVELOPMENT AND MANUFACTURE OF THE PRODUCT SHOWN. ALL RIGHTS RESERVED IN U.S. COPYRIGHT LAW.

REVISIONS			
NO.	DESCRIPTION	DATE	BY
1	CHANGE CHASSIS, ADD MAST, LADDER, RACK	02.19.18	PB
2			
3			
4			
5			
6			
7			
8			



COPPELL PD (TX)
S32MCC-33603-17

DRAWN BY P. BROTHERTON	DATE 01-05-18	SCALE 1/4" = 1'-0"
PROJECT MGR.	DATE	DWG. TYPE PROPOSAL
DRAWING REFERENCE SALES		