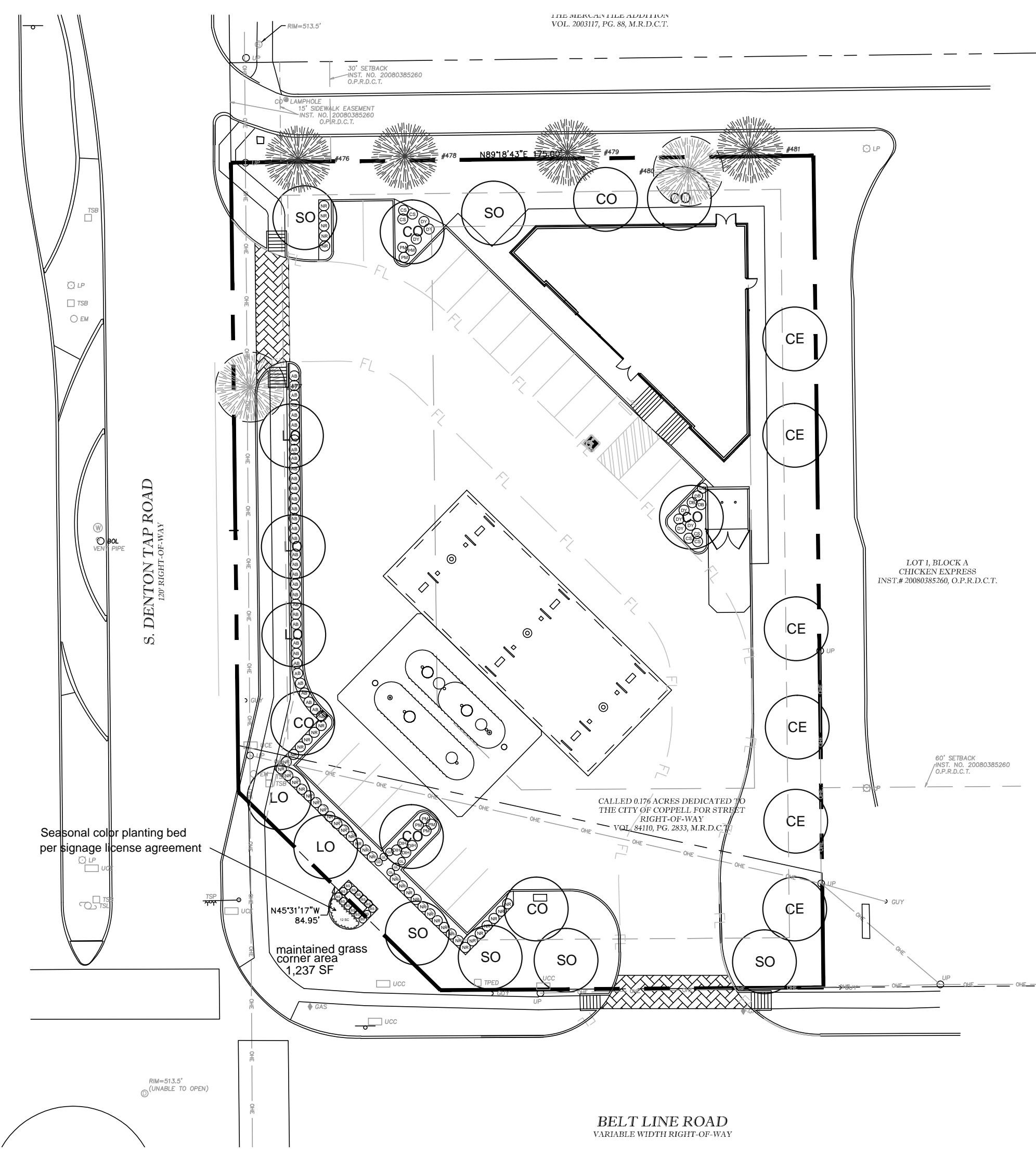
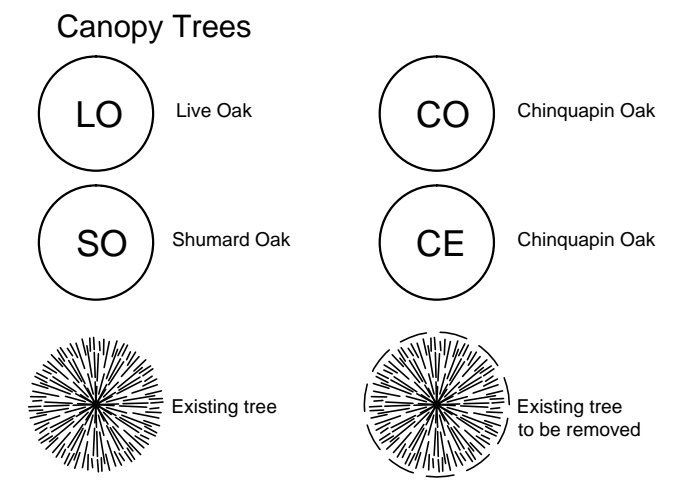


SCOTT WILDER
 11/1/2018 11:22 AM
 C:\USERS\SCOTT WILDER\DOCUMENTS\AUTOCAD_LRD\7-11 COPPELL TX\711 COPPELL.LS.DWG
 LAST SAVED: 11/1/2018 11:21 AM



TREE LEGEND



SHRUB LEGEND

- NR Nellie R Stevens Holly
- AB Abelia
- DY Dwarf Yaupon
- CS Red Cherry Sage
- GL Giant Liriope
- PM Pink Muhly
- DB Dwarf Burford Holly
- DIH Dwarf Ind. Hawthorne
- BS Blackeyed Susan
- SC Seasonal Color

LANDSCAPE NOTES

- The project will have an underground automatic irrigation system to water all new plantings.
- Install 4" layer of shredded hardwood mulch to all planting beds.
- Install 4" steel edging between all shrub beds and grass areas.
- Shrub beds to have 12 inches of prepared planting mix (75% import topsoil, 15% composted amendment, 10% washed sand)
- Shredded hardwood mulch must contain long strands along with double shred finer material obtained from a local source.
- Install 4 inches of clean topsoil in all areas of the site disturbed by grading and construction operations. Topsoil shall be free from sticks, debris and rocks larger than 2 inches in diameter and have an organic matter level of 3 percent minimum and a pH range between 5.5 and 7.4 percent. Provide soil test analysis from a soil test laboratory showing soil makeup and organic percentage.
- Solid sod all areas disturbed by construction activities.

TREE TABLE

TAG #	DIAMETER	TYPE
#476	8"	Elm
#477	12"	Live Oak
#478	8"	Elm
#479	6"	Elm
#480	18"	Oak
#481	6"	Elm

* = removed tree

PLANT LIST

CANOPY TREES			
5	LO	Live Oak	Quercus virginiana 3" cal. B&B 12' ht. 6' spread
6	SO	Shumard Oak	Quercus shumardii 3" cal. B&B 12' ht. 6' spread
6	CE	Cedar Elm	Ulmus crassifolia 3" cal. B&B 12' ht. 6' spread
7	CO	Chinquapin Oak	Quercus muhlenbergii 3" cal. B&B 12' ht. 6' spread
SHRUBS & GROUNDCOVERS			
42	NR	Nellie R Stevens Holly	Ilex 'Nellie R Stevens' 10 gal. 36" oc 30" height
34	AB	Abelia	Abelia grandiflora 10 gal. 36" oc 30" height
7	DY	Dwarf Yaupon	Ilex vomitoria 'Nana' 3 gal. 36" oc
6	CS	Red Cherry Sage	Salvia greggii 'Red' 3 gal. 36" oc
8	GL	Giant Liriope	Liriope gigantea 3 gal. 36" oc
7	PM	Pink Muhly	Muhlenbergia capillaris 3 gal. 36" oc
4	DB	Dwarf Burford Holly	Ilex cornuta burfordi nana 5 gal. 36" oc
4	DIH	Dwarf Ind. Hawthorne	Raphiolepis indica 'Pinkie' 5 gal. 36" oc
14	BS	Blackeyed Susan	Rudbeckia hirta 1 gal. 24" oc
12	SC	Seasonal Color	To be determined at time of planting 1 gal. 24" oc

**City of Coppell, Texas
 LANDSCAPE CALCULATIONS**

Category	Required	Provided
Total Lot Area	0.9127 AC	41,843 SF
Landscape Area 30%	12,553 SF	13,130 SF (31.3%)
Perimeter Landscape Area		6,844 SF
Interior Landscape Area		983 SF
Non-Vehicular Landscape Area		4,066 SF
Maintained grass corner area		1,237 SF
Percentage of total site devoted to landscaping	13,130 SF (31.3%)	
Perimeter Landscaping 1 tree / 50 linear ft		
North property line 174.99 LF	4	4 Canopy
10 ft. width		1,630 SF
South property line 157.57 LF	4	4 Canopy Trees
15 ft. width Belt Line Rd.		1,694 SF
East property line 249.8 LF	5	5 Canopy Trees
10 ft. width		2,378 SF
West property line 231.45 LF	5	5 Canopy Trees
15 ft. width		1,142 SF
Interior Landscaping total parking area 9,745 SF		
1 tree / 400 sq ft 10% area required landscape	974 SF	983 SF
	3 trees	3 trees
1 tree per 15 spaces 20 spaces	2	2 parking trees
1 tree at terminus of row		
Non-Vehicular Landscape Area		
41,843 SF - 2,994 = 38,849 x .15 = 5,827 SF	5,827 SF	4,066 SF
50 % landscape area in front yard 2,914 SF		
1 tree / 2,500 sq ft	3 trees	3 Canopy Trees

Tree Mitigation

Removed trees
 #477 12" Live Oak
 #480 18" Oak
 30" total removed

Mitigation to be paid into tree fund

site integration studio
 Landscape Architecture - Sustainable Site Planning - Natural Resource Design

John F. Murphy, ASLA

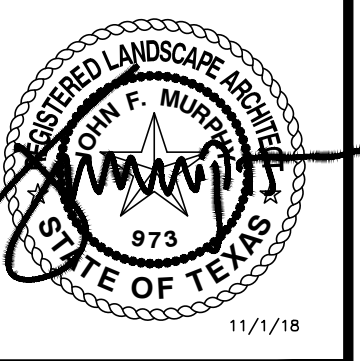
6647 Oak Hill Blvd.
 Tyler, TX 75703
 john@stsiteint.com
 scott@stsiteint.com

512.632.3822 - Mobile
 903.533.8998 - Tyler
 512.589.9584 - Austin
 www.stsiteint.com

TEXAS REGISTRATION #14199

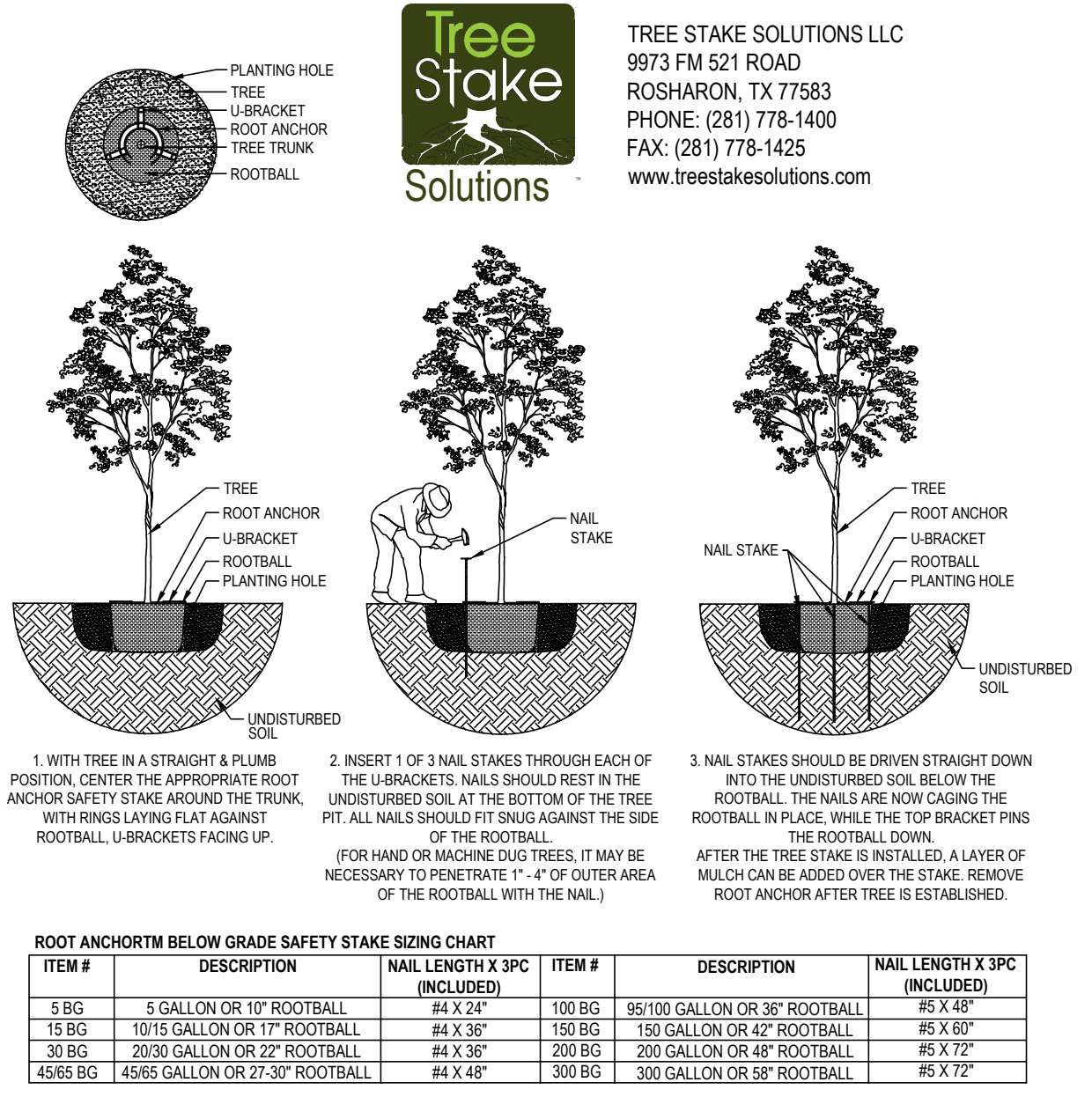
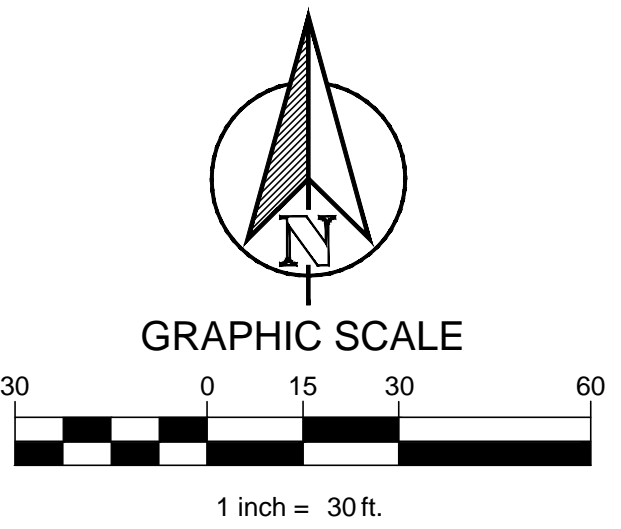
GLAY MOORE ENGINEERING

1903 CENTRAL DRIVE, SUITE #406
 BEDFORD, TX 76021
 WWW.GLAYMOORE.COM



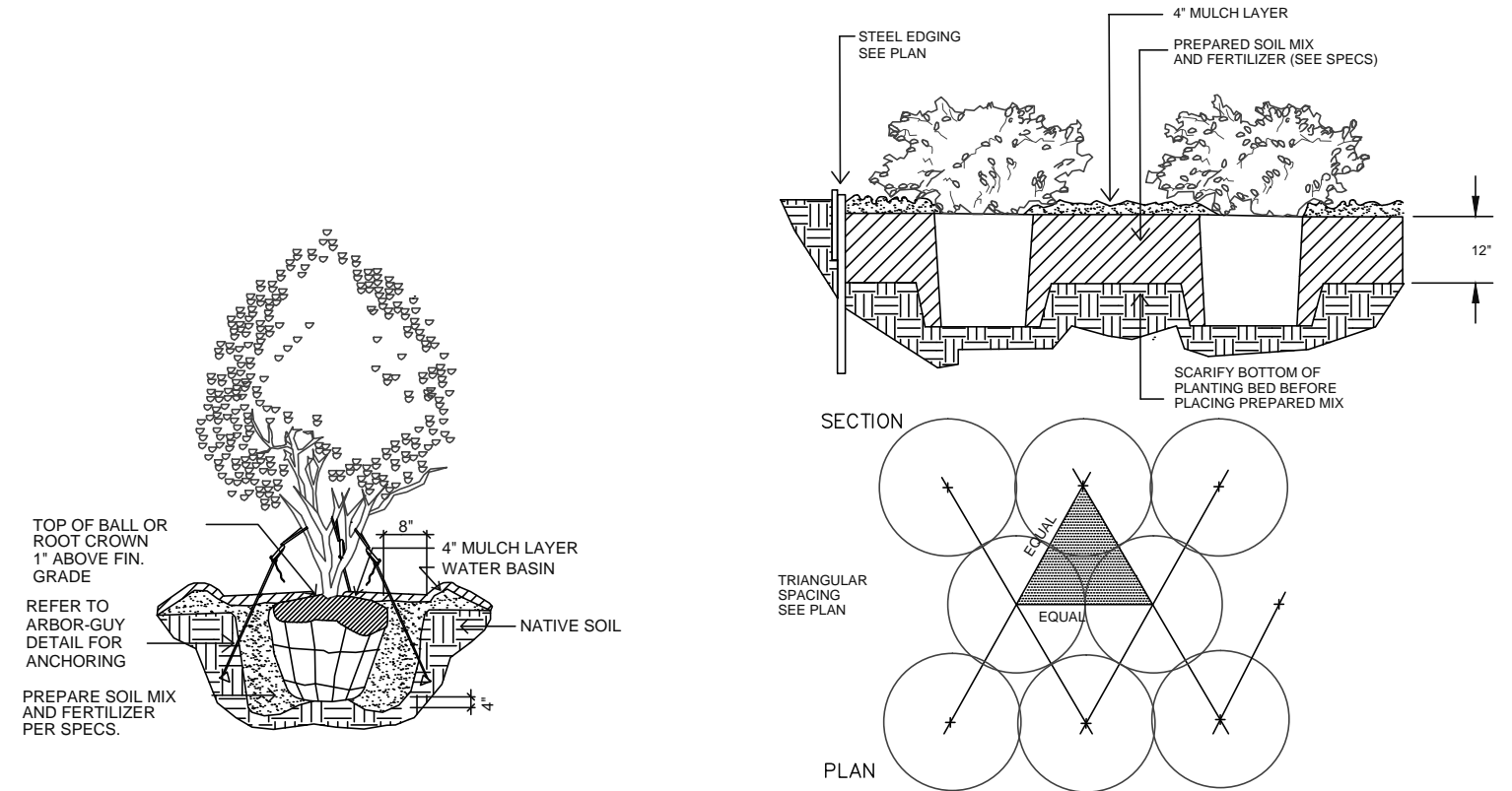
**7 ELEVEN
 890 S. DENTON TAP RD.
 COPPELL, TEXAS**

Exhibit C

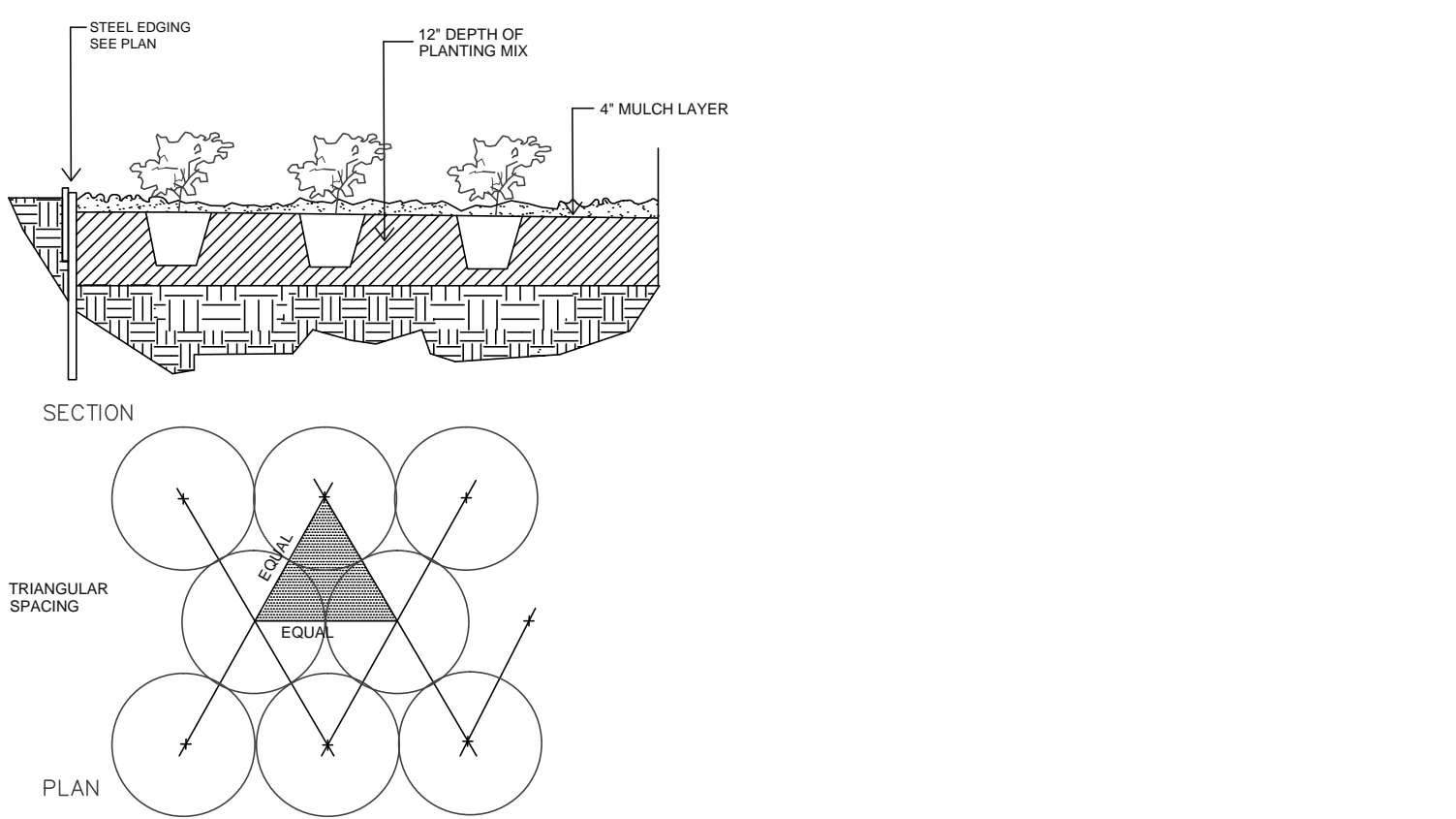


ROOT ANCHORING BELOW GRADE SAFETY STAKE SIZING CHART

ITEM #	DESCRIPTION	NAIL LENGTH X 3PC (INCLUDED)	ITEM #	DESCRIPTION	NAIL LENGTH X 3PC (INCLUDED)
5 BG	5 GALLON OR 10" ROOTBALL	#4 X 24"	100 BG	95/100 GALLON OR 36" ROOTBALL	#5 X 48"
15 BG	10/15 GALLON OR 17" ROOTBALL	#4 X 36"	150 BG	150 GALLON OR 42" ROOTBALL	#5 X 60"
30 BG	20/30 GALLON OR 22" ROOTBALL	#4 X 36"	200 BG	200 GALLON OR 48" ROOTBALL	#5 X 72"
45/65 BG	45/65 GALLON OR 27-30" ROOTBALL	#4 X 48"	300 BG	300 GALLON OR 58" ROOTBALL	#5 X 72"



3 SHRUB PLANTING SCALE: NONE



4 GROUNDCOVER PLANTING SCALE: NONE

**7 ELEVEN
 SITE PLAN**

LEGAL DESCRIPTION:
 MOBIL SITE PLAN
 VOL. 84110, PG. 2833,
 M.R.D.C.T.
 0.961 ACRES (41,843 SF)

CITY OF COPPELL

DEVELOPER:
 SHAFFER CONSTRUCTION 2601 NETWORK BLVD, SUITE 413 FRISCO, TEXAS 75034 PH. 972.951.7851
 CONTACT: SHANE PARTRIDGE EMAIL: SPARTRIDGE@SHAFFERCONST.COM

APPLICANT:
 CLAYMOORE ENGINEERING, INC. 1903 CENTRAL DR., SUITE #406 BEDFORD, TX 76021 PH: 817.281.0572
 CONTACT: MATT MOORE, PE EMAIL: MATT@CLAYMOOREENG.COM

COUNTY: DALLAS COUNTY CITY: CITY OF COPPELL STATE: TEXAS

**LANDSCAPE PLAN
 & TREE SURVEY**

DESIGN: JEV
 DRAWN: JEV
 CHECKED: MM
 DATE: 11/01/2018

SHEET
L-1

File No. 2018-098