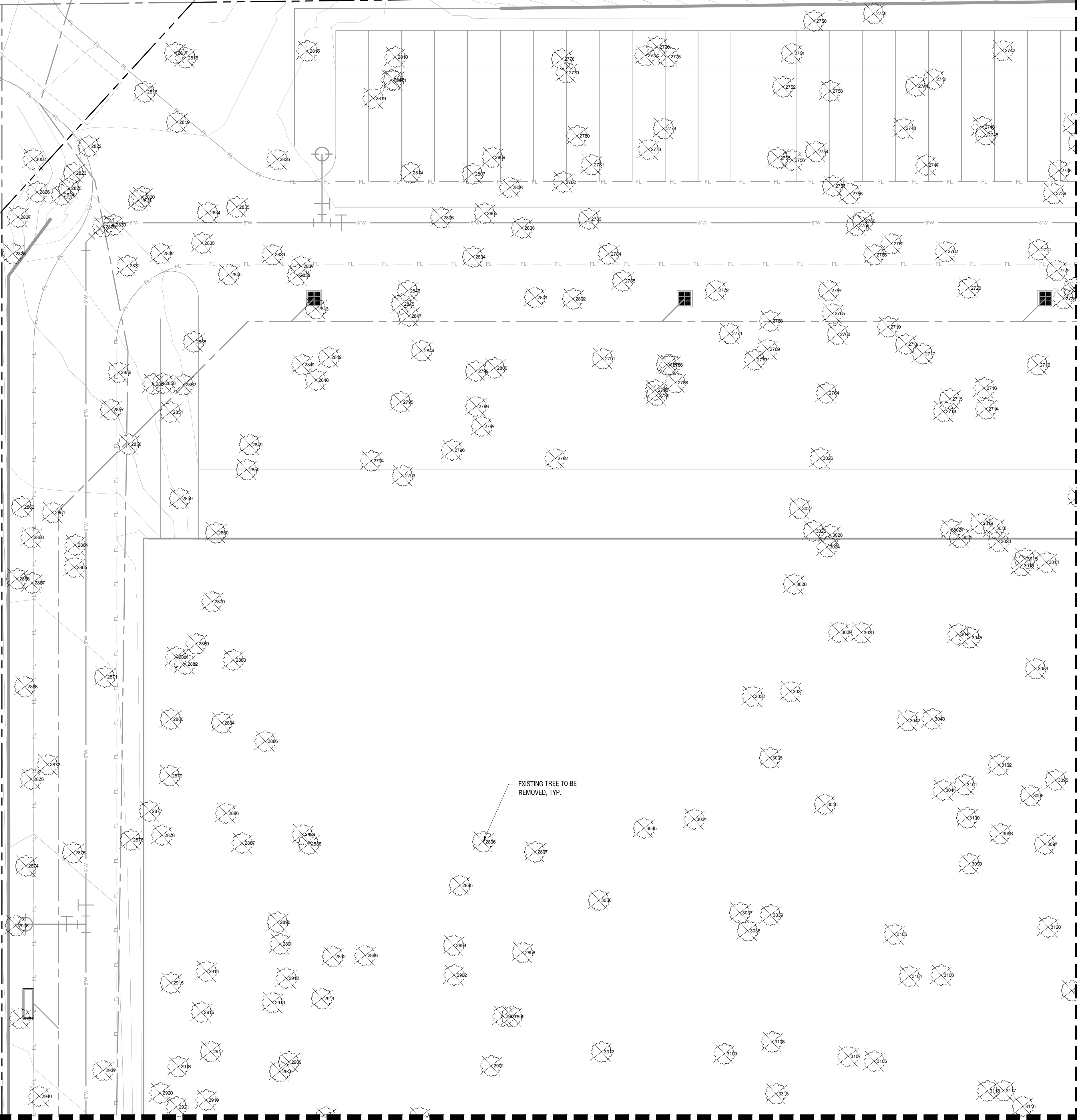


IMAGES
 XREFS
 PLOTTED BY
 DATE
 DWG NAME

Lowett Industrial Coppel 121 View R000_EK : 8/07 : 1/25/2023 1:34 PM
 CHANGELIST LIBRARY: 1/25/2023 1:34 PM
 PLOTTED BY: CHANGELIST LIBRARY
 DATE: 1/25/2023 1:34 PM
 DWG NAME: TP 1.00 - Options.dwg

This document, together with the concepts and designs presented herein, is intended only for the specific purpose and client for which it was prepared. Review of and reliance upon this document without written authorization and adaptation by Kimley-Horn and Associates, Inc. shall be without liability to Kimley-Horn and Associates, Inc.

HWY 121



City of Coppell - Tree Mitigation Table										
Tag #	DBH	Scientific	Common	Health	Stems	Action	Location	Protected	Replacement Ratio	Mitigation Required
2333	24.4	Prosopis glandulosa	MESQUITE	Healthy	Multi	REMOVE	DIA	SPECIMEN	1:10	244
2334	8.2	Ulmus crassifolia	CEDAR ELM	Healthy	Single	REMOVE	DIA	PROTECTED	1:1	8.2
2335	6.3	Prosopis glandulosa	MESQUITE	Healthy	Multi	REMOVE	DIA	UNPROTECTED	0	0
2336	6.4	Ulmus crassifolia	CEDAR ELM	Healthy	Single	REMOVE	DIA	PROTECTED	1:1	6.4
2337	6.7	Ulmus crassifolia	CEDAR ELM	Healthy	Single	REMOVE	DIA	PROTECTED	1:1	6.7
2338	8.2	Ulmus crassifolia	CEDAR ELM	Healthy	Single	REMOVE	DIA	PROTECTED	1:1	8.2
2339	10	Prosopis glandulosa	MESQUITE	Healthy	Multi	REMOVE	DIA	PROTECTED	1:1	10
2340	8.2	Ulmus crassifolia	CEDAR ELM	Healthy	Multi	REMOVE	DIA	PROTECTED	1:1	8.2
2341	9.2	Prosopis glandulosa	MESQUITE	Healthy	Multi	REMOVE	DIA	UNPROTECTED	0	0
2342	8.4	Prosopis glandulosa	MESQUITE	Healthy	Forked	REMOVE	DIA	UNPROTECTED	0	0
2343	6.7	Quercus stellata	POST OAK	Healthy	Single	REMOVE	DIA	PROTECTED	1:1	6.7
2344	10.6	Prosopis glandulosa	MESQUITE	Healthy	Multi	REMOVE	DIA	PROTECTED	1:1	10.6
2345	6.3	Prosopis glandulosa	MESQUITE	Healthy	Forked	REMOVE	DIA	UNPROTECTED	0	0
2346	9.9	Ulmus crassifolia	CEDAR ELM	Healthy	Single	REMOVE	DIA	PROTECTED	1:1	9.9
2347	6.9	Ulmus crassifolia	CEDAR ELM	Healthy	Single	REMOVE	DIA	PROTECTED	1:1	6.9
2348	6.5	Ulmus crassifolia	CEDAR ELM	Healthy	Single	REMOVE	DIA	PROTECTED	1:1	6.5
2364	10.6	Gleditsia triacanthos	HONEY LOCUST	Healthy	Multi	REMOVE	DIA	PROTECTED	1:1	10.6
2365	6.4	Gleditsia triacanthos	HONEY LOCUST	Healthy	Single	REMOVE	DIA	PROTECTED	1:1	6.4
2366	7.1	Ulmus crassifolia	CEDAR ELM	Healthy	Forked	REMOVE	OFFSITE	PROTECTED	1:1	7.1
2367	7.8	Ulmus crassifolia	CEDAR ELM	Healthy	Forked	REMOVE	OFFSITE	PROTECTED	1:1	7.8
2368	30.3	Quercus stellata	POST OAK	Healthy	Single	REMOVE	DIA	SPECIMEN	1:10	303
2369	35.6	Quercus stellata	POST OAK	Healthy	Single	REMOVE	DIA	SPECIMEN	1:10	356
2371	16.1	Fraxinus pennsylvanica	GREEN ASH	Healthy	Multi	REMOVE	DIA	PROTECTED	1:1	16.1
2391	21.9	Quercus stellata	POST OAK	Healthy	Single	REMOVE	DIA	PROTECTED	1:1	21.9
2392	27.4	Quercus stellata	POST OAK	Healthy	Single	REMOVE	DIA	SPECIMEN	1:10	274
2393	29.1	Quercus stellata	POST OAK	Healthy	Single	REMOVE	DIA	SPECIMEN	1:10	291
2396	9.3	Populus deltoides	EASTERN COTTONWOOD	Healthy	Single	REMOVE	OFFSITE	UNPROTECTED	0	0
2397	11.4	Celtis laevigata	HACKBERRY	Healthy	Forked	REMOVE	OFFSITE	PROTECTED	1:1	11.4
2400	15.6	Populus deltoides	EASTERN COTTONWOOD	Healthy	Single	REMOVE	DIA	PROTECTED	1:1	15.6
2401	6.6	Juniperus virginiana	EASTERN REDCEDAR	Healthy	Single	REMOVE	DIA	PROTECTED	1:1	6.6
2402	10.5	Ulmus americana	AMERICAN ELM	Healthy	Single	REMOVE	DIA	PROTECTED	1:1	10.5
2403	7.5	Celtis laevigata	HACKBERRY	Healthy	Single	REMOVE	DIA	UNPROTECTED	0	0
2404	9.2	Celtis laevigata	HACKBERRY	Healthy	Single	REMOVE	OFFSITE	UNPROTECTED	0	0
2407	13.6	Populus deltoides	EASTERN COTTONWOOD	Declining	Single	REMOVE	DIA	UNPROTECTED	0	0
2410	9.5	Prosopis glandulosa	MESQUITE	Declining	Single	REMOVE	OFFSITE	UNPROTECTED	0	0
2411	7	Gleditsia triacanthos	HONEY LOCUST	Healthy	Single	REMOVE	OFFSITE	PROTECTED	1:1	7
2412	8	Celtis laevigata	HACKBERRY	Healthy	Single	REMOVE	DIA	UNPROTECTED	0	0
2416	11.8	Maclura pomifera	OSAGE-ORANGE	Healthy	Single	REMOVE	OFFSITE	PROTECTED	1:1	11.8
2423	13.9	Ulmus americana	AMERICAN ELM	Healthy	Single	REMOVE	DIA	PROTECTED	1:1	13.9
2425	23.5	Populus deltoides	EASTERN COTTONWOOD	Healthy	Multi	REMOVE	OFFSITE	PROTECTED	1:1	23.5
2426	27.4	Quercus stellata	POST OAK	Declining	Single	REMOVE	BUILDING PAD	UNPROTECTED	0	0

City of Coppell - Tree Mitigation Table										
Tag #	DBH	Scientific	Common	Health	Stems	Action	Location	Protected	Replacement Ratio	Mitigation Required
2446	8.3	Ulmus crassifolia	CEDAR ELM	Healthy	Single	REMOVE	DIA	PROTECTED	1:1	8.3
2447	6.6	Celtis laevigata	HACKBERRY	Healthy	Single	REMOVE	DIA	UNPROTECTED	0	0
2450	7.3	Ulmus crassifolia	CEDAR ELM	Healthy	Forked	REMOVE	DIA	PROTECTED	1:1	7.3
2451	6.3	Celtis laevigata	HACKBERRY	Healthy	Single	REMOVE	DIA	UNPROTECTED	0	0
2483	12.6	Quercus shumardii	SHUMARD OAK	Healthy	Single	REMOVE	DIA	PROTECTED	1:1	12.6
2484	8.3	Quercus shumardii	SHUMARD OAK	Healthy	Single	REMOVE	DIA	PROTECTED	1:1	8.3
2488	17.5	Ulmus crassifolia	CEDAR ELM	Healthy	Multi	REMOVE	BUILDING PAD	UNPROTECTED	0	0
2489	11.9	Ulmus crassifolia	CEDAR ELM	Healthy	Single	REMOVE	BUILDING PAD	UNPROTECTED	0	0
2490	15.3	Ulmus crassifolia	CEDAR ELM	Healthy	Single	REMOVE	DIA	PROTECTED	1:1	15.3
2491	19	Salix nigra	BLACK WILLOW	Healthy	Single	REMOVE	DIA	PROTECTED	1:1	19
2492	33.2	Quercus stellata	POST OAK	Healthy	Single	REMOVE	DIA	SPECIMEN	1:10	332
2493	14.4	Salix nigra	BLACK WILLOW	Healthy	Forked	REMOVE	DIA	PROTECTED	1:1	14.4
2494	32.8	Quercus stellata	POST OAK	Healthy	Single	REMOVE	DIA	SPECIMEN	1:10	328
2495	22.3	Quercus stellata	POST OAK	Healthy	Single	REMOVE	DIA	PROTECTED	1:1	22.3
2496	6.2	Juniperus virginiana	EASTERN REDCEDAR	Healthy	Single	REMOVE	DIA	PROTECTED	1:1	6.2
2497	6.6	Juniperus virginiana	EASTERN REDCEDAR	Healthy	Single	REMOVE	DIA	PROTECTED	1:1	6.6
2498	10.5	Quercus stellata	POST OAK	Healthy	Single	REMOVE	DIA	PROTECTED	1:1	10.5
2499	7.3	Juniperus virginiana	EASTERN REDCEDAR	Healthy	Multi	REMOVE	DIA	PROTECTED	1:1	7.3
2500	7.7	Prosopis glandulosa	MESQUITE	Healthy	Single	REMOVE	DIA	UNPROTECTED	0	0
2501	8.4	Quercus stellata	POST OAK	Healthy	Single	REMOVE	DIA	PROTECTED	1:1	8.4
2502	7.8	Quercus marilandica	BLACKJACK OAK	Healthy	Single	REMOVE	DIA	PROTECTED	1:1	7.8
2503	6.3	Juniperus virginiana	EASTERN REDCEDAR	Healthy	Single	REMOVE	DIA	PROTECTED	1:1	6.3
2504	6.4	Juniperus virginiana	EASTERN REDCEDAR	Healthy	Single	REMOVE	DIA	PROTECTED	1:1	6.4
2505	8	Juniperus virginiana	EASTERN REDCEDAR	Healthy	Single	REMOVE	DIA	PROTECTED	1:1	8
2506	8.2	Juniperus virginiana	EASTERN REDCEDAR	Healthy	Single	REMOVE	DIA	PROTECTED	1:1	8.2
2507	8.6	Quercus stellata	POST OAK	Healthy	Single	REMOVE	DIA	PROTECTED	1:1	8.6
2508	6.4	Ulmus crassifolia	CEDAR ELM	Healthy	Single	REMOVE	DIA	PROTECTED	1:1	6.4
2509	6.5	Gleditsia triacanthos	HONEY LOCUST	Healthy	Single	REMOVE	DIA	PROTECTED	1:1	6.5
2510	9.9	Celtis laevigata	HACKBERRY	Healthy	Multi	REMOVE	DIA	UNPROTECTED	0	0
2511	9	Juniperus virginiana	EASTERN REDCEDAR	Healthy	Single	REMOVE	DIA	PROTECTED	1:1	9
2512	15.9	Quercus stellata	POST OAK	Healthy	Single	REMOVE	DIA	PROTECTED	1:1	15.9
2513	6.6	Ulmus crassifolia	CEDAR ELM	Healthy	Single	REMOVE	DIA	PROTECTED	1:1	6.6
2514	6.4	Ulmus crassifolia	CEDAR ELM	Healthy	Single	REMOVE	DIA	PROTECTED	1:1	6.4
2515	6.3	Celtis laevigata	HACKBERRY	Healthy	Single	REMOVE	DIA	UNPROTECTED	0	0
2516	10.1	Celtis laevigata	HACKBERRY	Healthy	Single	REMOVE	DIA	PROTECTED	1:1	10.1
2517	7.1	Celtis laevigata	HACKBERRY	Healthy	Single	REMOVE	DIA	UNPROTECTED	0	0
2518	7.2	Celtis laevigata	HACKBERRY	Healthy	Single	REMOVE	DIA	UNPROTECTED	0	0
2519	6.5	Maclura pomifera	OSAGE-ORANGE	Healthy	Single	REMOVE	DIA	UNPROTECTED	0	0
2520	15.2	Juniperus virginiana	EASTERN REDCEDAR	Healthy	Single	REMOVE	DIA	PROTECTED	1:1	15.2
2521	7.3	Celtis laevigata	HACKBERRY	Healthy	Single	REMOVE	DIA	UNPROTECTED	0	0
2522	13	Celtis laevigata	HACKBERRY	Healthy	Single	REMOVE	DIA	PROTECTED	1:1	13
2523	11.7	Celtis laevigata	HACKBERRY	Healthy	Single	REMOVE	DIA	PROTECTED	1:1	11.7
2524	7.1	Ulmus crassifolia	CEDAR ELM	Healthy	Single	REMOVE	DIA	PROTECTED	1:1	7.1
2525	7.4	Celtis laevigata	HACKBERRY	Healthy	Single	REMOVE	DIA	UNPROTECTED	0	0
2526	7.1	Celtis laevigata	HACKBERRY	Healthy	Single	REMOVE	DIA	UNPROTECTED	0	0
2527	16.5	Celtis laevigata	HACKBERRY	Healthy	Multi	REMOVE	DIA	PROTECTED	1:1	16.5
2528	7.8	Celtis laevigata	HACKBERRY	Healthy	Single	REMOVE	DIA	UNPROTECTED	0	0
2529	7.4	Celtis laevigata	HACKBERRY	Healthy	Single	REMOVE	DIA	UNPROTECTED	0	0
2530	13.9	Maclura pomifera	OSAGE-ORANGE	Healthy	Multi	REMOVE	DIA	PROTECTED	1:1	13.9
2531	8.8	Ulmus crassifolia	CEDAR ELM	Healthy	Multi	REMOVE	DIA	PROTECTED	1:1	8.8
2532	6.7	Ulmus crassifolia	CEDAR ELM	Healthy	Single	REMOVE	DIA	PROTECTED	1:1	6.7
2533	6	Prosopis glandulosa	MESQUITE	Declining	Single	REMOVE	DIA	UNPROTECTED	0	0
2534	7.9	Ulmus crassifolia	CEDAR ELM	Healthy	Single	REMOVE	DIA	PROTECTED	1:1	7.9
2535	6.3	Ulmus crassifolia	CEDAR ELM	Healthy	Single	REMOVE	DIA	PROTECTED	1:1	6.3
2536	13.8	Ulmus crassifolia	CEDAR ELM	Healthy	Multi	REMOVE	DIA	PROTECTED	1:1	13.8
2537	7.4	Ulmus crassifolia	CEDAR ELM	Healthy	Single	REMOVE	DIA	PROTECTED	1:1	7.4
2538	10.9	Quercus stellata	POST OAK	Healthy	Single	REMOVE	DIA	PROTECTED	1:1	10.9
2539	10.4	Quercus stellata	POST OAK	Healthy	Single	REMOVE	DIA	PROTECTED	1:1	10.4
2540	19.6	Quercus stellata	POST OAK	Healthy	Single	REMOVE	DIA	PROTECTED	1:1	19.6

City of Coppell - Tree Mitigation Table										
Tag #	DBH	Scientific	Common	Health	Stems	Action	Location	Protected	Replacement Ratio	Mitigation Required
2541	6.9	Juniperus virginiana	EASTERN REDCEDAR	Healthy	Single	REMOVE	DIA	PROTECTED	1:1	6.9
2542	25.6	Ulmus crassifolia	CEDAR ELM	Healthy	Multi	REMOVE	DIA	SPECIMEN	1:10	256
2543	18	Quercus stellata	POST OAK	Healthy	Single	REMOVE	DIA	PROTECTED	1:1	18
2544	28.9	Ulmus crassifolia	CEDAR ELM	Healthy	Multi	REMOVE	DIA	SPECIMEN	1:10	289
2545	8.3	Juniperus virginiana	EASTERN REDCEDAR	Healthy	Single	REMOVE	DIA	PROTECTED	1:1	8.3
2546	6.3	Juniperus virginiana	EASTERN REDCEDAR	Healthy	Single	REMOVE	DIA	PROTECTED	1:1	6.3
2547	6.4	Juniperus virginiana	EASTERN REDCEDAR	Healthy	Single	REMOVE	DIA	PROTECTED	1:1	6.4
2548	7.9	Celtis laevigata	HACKBERRY	Healthy	Single	REMOVE	DIA	UNPROTECTED	0	0
2549	6.1	Ulmus crassifolia	CEDAR ELM	Healthy	Single	REMOVE	DIA	PROTECTED	1:1	6.1
2550	6.3	Ulmus crassifolia	CEDAR ELM	Healthy	Single	REMOVE	DIA	PROTECTED	1:1	6.3
2551	7.7	Ulmus crassifolia	CEDAR ELM	Healthy	Single	REMOVE	DIA	PROTECTED	1:1	7.7
2552	6.4	Ulmus crassifolia	CEDAR ELM	Healthy	Single	REMOVE	DIA	PROTECTED	1:1	6.4
2553	6.3	Juniperus virginiana	EASTERN REDCEDAR	Healthy	Single	REMOVE	DIA	PROTECTED	1:1	6.3
2554	6.4	Ulmus crassifolia	CEDAR ELM	Healthy	Single	REMOVE	DIA	PROTECTED	1:1	6.4
2555	8.9	Ulmus crassifolia	CEDAR ELM	Healthy	Single	REMOVE	DIA	PROTECTED	1:1	8.9
2556	9.2	Ulmus crassifolia	CEDAR ELM	Healthy	Single	REMOVE	DIA	PROTECTED	1:1	9.2
2557	9.5	Ulmus crassifolia	CEDAR ELM	Healthy	Multi	REMOVE	DIA	PROTECTED	1:1	9.5
2558	7.5	Ulmus crassifolia	CEDAR ELM	Healthy	Forked	REMOVE	DIA	PROTECTED	1:1	7.5
2559	9	Ulmus crassifolia	CEDAR ELM	Healthy	Single	REMOVE	DIA	PROTECTED	1:1	9
2560	7	Prosopis glandulosa	MESQUITE	Declining	Single	REMOVE	DIA	UNPROTECTED	0	0
2561	9.1	Prosopis glandulosa	MESQUITE	Healthy	Multi	REMOVE	DIA	UNPROTECTED	0	0
2562	7.5	Carya illinoensis	PECAN	Healthy	Multi	REMOVE	DIA	PROTECTED	1:1	7.5
2563	8.8	Ulmus crassifolia	CEDAR ELM	Healthy	Single	REMOVE	DIA	PROTECTED	1:1	8.8
2564	17.6	Quercus shumardii	SHUMARD OAK	Healthy	Single	REMOVE	DIA	PROTECTED	1:1	17.6
2565	13.2	Quercus shumardii	SHUMARD OAK	Healthy	Single	REMOVE	DIA	PROTECTED	1:1	13.2
2566	14.8	Quercus shumardii	SHUMARD OAK	Healthy	Single	REMOVE	DIA	PROTECTED	1:1	14.8
2567	6.7	Juniperus virginiana	EASTERN REDCEDAR	Healthy	Single	REMOVE	DIA	PROTECTED	1:1	6.7
2568	8.2	Maclura pomifera	OSAGE-ORANGE	Healthy	Forked	REMOVE	DIA	UNPROTECTED	0	0
2569	7.4	Maclura pomifera	OSAGE-ORANGE	Healthy	Single	REMOVE	DIA	UNPROTECTED	0	0
2570	11.2	Maclura pomifera	OSAGE-ORANGE	Healthy	Multi	REMOVE	DIA	PROTECTED	1:1	11.2
2571	10.9	Prosopis glandulosa	MESQUITE	Healthy	Forked	REMOVE	DIA	PROTECTED	1:1	10.9
2572	16.8	Maclura pomifera	OSAGE-ORANGE	Healthy	Multi	REMOVE	DIA	PROTECTED	1:1	16.8
2573	24.2	Juniperus virginiana	EASTERN REDCEDAR	Healthy	Multi	REMOVE	DIA	SPECIMEN	1:10	242
2574	11.6	Ulmus crassifolia	CEDAR ELM	Healthy	Multi	REMOVE	DIA	PROTECTED		

City of Coppell - Tree Mitigation Table										
Tag #	DBH	Scientific	Common	Health	Stems	Action	Location	Protected	Replacement Ratio	Mitigation Required
2646	7.4	Ulmus crassifolia	CEDAR ELM	Healthy	Single	REMOVE	DIA	PROTECTED	1:1	7.4
2647	7.5	Celtis laevigata	HACKBERRY	Healthy	Single	REMOVE	DIA	UNPROTECTED	0	0
2648	7.4	Ulmus crassifolia	CEDAR ELM	Healthy	Single	REMOVE	DIA	PROTECTED	1:1	7.4
2649	6.3	Ulmus crassifolia	CEDAR ELM	Healthy	Single	REMOVE	DIA	PROTECTED	1:1	6.3
2650	8.9	Celtis laevigata	HACKBERRY	Healthy	Single	REMOVE	DIA	UNPROTECTED	0	0
2651	13.7	Prosopis glandulosa	MESQUITE	Healthy	Multi	REMOVE	DIA	PROTECTED	1:1	13.7
2652	7.6	Quercus stellata	POST OAK	Healthy	Single	REMOVE	DIA	PROTECTED	1:1	7.6
2653	7.3	Ulmus crassifolia	CEDAR ELM	Healthy	Multi	REMOVE	DIA	PROTECTED	1:1	7.3
2654	6.2	Ulmus crassifolia	CEDAR ELM	Healthy	Single	REMOVE	DIA	PROTECTED	1:1	6.2
2655	7.2	Ulmus crassifolia	CEDAR ELM	Healthy	Single	REMOVE	DIA	PROTECTED	1:1	7.2
2656	6.1	Ulmus crassifolia	CEDAR ELM	Healthy	Single	REMOVE	DIA	PROTECTED	1:1	6.1
2657	6.6	Ulmus crassifolia	CEDAR ELM	Healthy	Single	REMOVE	DIA	PROTECTED	1:1	6.6
2658	7.2	Quercus stellata	POST OAK	Healthy	Single	REMOVE	DIA	PROTECTED	1:1	7.2
2659	6.6	Quercus stellata	POST OAK	Healthy	Single	REMOVE	DIA	PROTECTED	1:1	6.6
2660	8.5	Celtis laevigata	HACKBERRY	Healthy	Single	REMOVE	DIA	UNPROTECTED	0	0
2661	8.3	Ulmus crassifolia	CEDAR ELM	Healthy	Multi	REMOVE	DIA	PROTECTED	1:1	8.3
2662	10.5	Ulmus crassifolia	CEDAR ELM	Healthy	Single	REMOVE	DIA	PROTECTED	1:1	10.5
2663	6.6	Celtis laevigata	HACKBERRY	Healthy	Single	REMOVE	DIA	UNPROTECTED	0	0
2664	10.3	Celtis laevigata	HACKBERRY	Healthy	Forked	REMOVE	DIA	PROTECTED	1:1	10.3
2665	16.9	Ulmus crassifolia	CEDAR ELM	Healthy	Forked	REMOVE	DIA	PROTECTED	1:1	16.9
2666	7.1	Prosopis glandulosa	MESQUITE	Healthy	Multi	REMOVE	DIA	UNPROTECTED	0	0
2667	15.3	Ulmus crassifolia	CEDAR ELM	Healthy	Multi	REMOVE	DIA	PROTECTED	1:1	15.3
2668	12.9	Prosopis glandulosa	MESQUITE	Healthy	Single	REMOVE	DIA	PROTECTED	1:1	12.9
2669	11.8	Ulmus crassifolia	CEDAR ELM	Healthy	Multi	REMOVE	DIA	PROTECTED	1:1	11.8
2670	8.8	Quercus stellata	POST OAK	Healthy	Single	REMOVE	DIA	PROTECTED	1:1	8.8
2671	11.5	Ulmus crassifolia	CEDAR ELM	Healthy	Single	REMOVE	DIA	PROTECTED	1:1	11.5
2672	7.5	Quercus stellata	POST OAK	Healthy	Single	REMOVE	DIA	PROTECTED	1:1	7.5
2673	9.1	Quercus stellata	POST OAK	Healthy	Single	REMOVE	DIA	PROTECTED	1:1	9.1
2674	14.2	Ulmus crassifolia	CEDAR ELM	Healthy	Multi	REMOVE	DIA	PROTECTED	1:1	14.2
2675	14.5	Prosopis glandulosa	MESQUITE	Healthy	Multi	REMOVE	DIA	PROTECTED	1:1	14.5
2676	6.8	Ulmus crassifolia	CEDAR ELM	Healthy	Single	REMOVE	DIA	PROTECTED	1:1	6.8
2677	10	Ulmus crassifolia	CEDAR ELM	Healthy	Single	REMOVE	DIA	PROTECTED	1:1	10
2678	10.6	Prosopis glandulosa	MESQUITE	Declining	Single	REMOVE	DIA	UNPROTECTED	0	0
2679	9.8	Quercus stellata	POST OAK	Healthy	Single	REMOVE	DIA	PROTECTED	1:1	9.8
2680	6	Celtis laevigata	HACKBERRY	Healthy	Single	REMOVE	DIA	UNPROTECTED	0	0
2681	6.6	Ulmus crassifolia	CEDAR ELM	Healthy	Single	REMOVE	DIA	UNPROTECTED	1:1	6.6
2682	8	Quercus stellata	POST OAK	Healthy	Single	REMOVE	DIA	PROTECTED	1:1	8
2683	6.2	Celtis laevigata	HACKBERRY	Healthy	Single	REMOVE	DIA	UNPROTECTED	0	0
2684	9.6	Quercus stellata	POST OAK	Healthy	Single	REMOVE	DIA	PROTECTED	1:1	9.6
2685	7.1	Quercus stellata	POST OAK	Healthy	Single	REMOVE	DIA	PROTECTED	1:1	7.1
2686	9.4	Quercus stellata	POST OAK	Healthy	Single	REMOVE	DIA	PROTECTED	1:1	9.4
2687	12.6	Prosopis glandulosa	MESQUITE	Healthy	Multi	REMOVE	DIA	PROTECTED	1:1	12.6
2688	6.7	Quercus stellata	POST OAK	Healthy	Single	REMOVE	DIA	PROTECTED	1:1	6.7
2689	8.2	Quercus stellata	POST OAK	Healthy	Single	REMOVE	DIA	PROTECTED	1:1	8.2
2690	9.4	Ulmus crassifolia	CEDAR ELM	Healthy	Multi	REMOVE	DIA	PROTECTED	1:1	9.4
2691	9	Quercus stellata	POST OAK	Healthy	Single	REMOVE	DIA	PROTECTED	1:1	9
2692	7.9	Quercus stellata	POST OAK	Healthy	Single	REMOVE	DIA	PROTECTED	1:1	7.9
2693	6.4	Quercus stellata	POST OAK	Healthy	Single	REMOVE	DIA	PROTECTED	1:1	6.4
2694	7.8	Ulmus crassifolia	CEDAR ELM	Healthy	Single	REMOVE	DIA	PROTECTED	1:1	7.8
2695	7.7	Prosopis glandulosa	MESQUITE	Healthy	Single	REMOVE	DIA	UNPROTECTED	0	0
2696	13.5	Quercus stellata	POST OAK	Healthy	Single	REMOVE	DIA	PROTECTED	1:1	13.5
2697	8.7	Ulmus crassifolia	CEDAR ELM	Healthy	Single	REMOVE	DIA	PROTECTED	1:1	8.7
2698	12.8	Celtis laevigata	HACKBERRY	Healthy	Single	REMOVE	DIA	PROTECTED	1:1	12.8
2699	6.4	Juniperus virginiana	EASTERN REDCEDAR	Healthy	Single	REMOVE	DIA	PROTECTED	1:1	6.4
2700	8	Prosopis glandulosa	MESQUITE	Healthy	Single	REMOVE	DIA	UNPROTECTED	0	0
2701	9.1	Prosopis glandulosa	MESQUITE	Healthy	Forked	REMOVE	DIA	UNPROTECTED	0	0
2702	14.6	Prosopis glandulosa	MESQUITE	Healthy	Single	REMOVE	DIA	PROTECTED	1:1	14.6
2703	8.1	Juniperus virginiana	EASTERN REDCEDAR	Healthy	Single	REMOVE	DIA	PROTECTED	1:1	8.1
2704	20.8	Ulmus crassifolia	CEDAR ELM	Healthy	Forked	REMOVE	DIA	PROTECTED	1:1	20.8
2705	6	Ulmus crassifolia	CEDAR ELM	Healthy	Multi	REMOVE	DIA	PROTECTED	1:1	6
2706	6.2	Ulmus crassifolia	CEDAR ELM	Healthy	Single	REMOVE	DIA	PROTECTED	1:1	6.2
2707	17.8	Prosopis glandulosa	MESQUITE	Healthy	Single	REMOVE	DIA	PROTECTED	1:1	17.8
2708	10	Prosopis glandulosa	MESQUITE	Healthy	Single	REMOVE	DIA	PROTECTED	1:1	10
2709	10.3	Prosopis glandulosa	MESQUITE	Declining	Forked	REMOVE	DIA	UNPROTECTED	0	0
2710	14.1	Ulmus crassifolia	CEDAR ELM	Healthy	Multi	REMOVE	DIA	PROTECTED	1:1	14.1
2711	6	Ulmus crassifolia	CEDAR ELM	Healthy	Single	REMOVE	DIA	PROTECTED	1:1	6
2712	14.7	Prosopis glandulosa	MESQUITE	Healthy	Forked	REMOVE	DIA	PROTECTED	1:1	14.7
2713	8.5	Maclura pomifera	OSAGE-ORANGE	Healthy	Multi	REMOVE	DIA	UNPROTECTED	0	0
2714	6.9	Ulmus crassifolia	CEDAR ELM	Healthy	Single	REMOVE	DIA	PROTECTED	1:1	6.9
2715	6.6	Celtis laevigata	HACKBERRY	Healthy	Single	REMOVE	DIA	UNPROTECTED	0	0
2716	10.3	Prosopis glandulosa	MESQUITE	Healthy	Single	REMOVE	DIA	PROTECTED	1:1	10.3
2717	14.4	Prosopis glandulosa	MESQUITE	Healthy	Multi	REMOVE	DIA	PROTECTED	1:1	14.4
2718	6.3	Celtis laevigata	HACKBERRY	Healthy	Single	REMOVE	DIA	UNPROTECTED	0	0
2719	12.4	Maclura pomifera	OSAGE-ORANGE	Healthy	Single	REMOVE	DIA	PROTECTED	1:1	12.4
2720	6.3	Ulmus crassifolia	CEDAR ELM	Healthy	Single	REMOVE	DIA	PROTECTED	1:1	6.3
2721	8.3	Prosopis glandulosa	MESQUITE	Declining	Single	REMOVE	DIA	UNPROTECTED	0	0
2722	15.1	Ulmus crassifolia	CEDAR ELM	Healthy	Multi	REMOVE	DIA	PROTECTED	1:1	15.1
2723	11.1	Ulmus crassifolia	CEDAR ELM	Healthy	Multi	REMOVE	DIA	PROTECTED	1:1	11.1
2724	6.1	Ulmus crassifolia	CEDAR ELM	Healthy	Single	REMOVE	DIA	PROTECTED	1:1	6.1
2725	6.4	Ulmus crassifolia	CEDAR ELM	Healthy	Single	REMOVE	DIA	PROTECTED	1:1	6.4
2726	7.8	Prosopis glandulosa	MESQUITE	Healthy	Multi	REMOVE	DIA	UNPROTECTED	0	0
2727	6.3	Prosopis glandulosa	MESQUITE	Healthy	Single	REMOVE	DIA	UNPROTECTED	0	0
2728	7.3	Ulmus crassifolia	CEDAR ELM	Healthy	Single	REMOVE	DIA	PROTECTED	1:1	7.3
2729	9.4	Ulmus crassifolia	CEDAR ELM	Healthy	Multi	REMOVE	DIA	PROTECTED	1:1	9.4
2730	8	Prosopis glandulosa	MESQUITE	Healthy	Single	REMOVE	DIA	UNPROTECTED	0	0
2731	11.6	Prosopis glandulosa	MESQUITE	Declining	Single	REMOVE	DIA	UNPROTECTED	0	0
2732	6	Juniperus virginiana	EASTERN REDCEDAR	Healthy	Single	REMOVE	DIA	PROTECTED	1:1	6
2733	6.4	Juniperus virginiana	EASTERN REDCEDAR	Healthy	Forked	REMOVE	DIA	PROTECTED	1:1	6.4
2734	11	Prosopis glandulosa	MESQUITE	Declining	Single	REMOVE	DIA	UNPROTECTED	0	0
2735	11.3	Ulmus crassifolia	CEDAR ELM	Healthy	Multi	REMOVE	DIA	PROTECTED	1:1	11.3
2736	8.5	Ulmus crassifolia	CEDAR ELM	Healthy	Forked	REMOVE	DIA	PROTECTED	1:1	8.5
2737	6.1	Ulmus crassifolia	CEDAR ELM	Healthy	Single	REMOVE	DIA	PROTECTED	1:1	6.1
2738	6.9	Ulmus crassifolia	CEDAR ELM	Healthy	Single	REMOVE	DIA	PROTECTED	1:1	6.9
2739	6.2	Ulmus crassifolia	CEDAR ELM	Healthy	Single	REMOVE	DIA	PROTECTED	1:1	6.2
2740	6.4	Prosopis glandulosa	MESQUITE	Declining	Single	REMOVE	DIA	UNPROTECTED	0	0
2741	10.6	Ulmus crassifolia	CEDAR ELM	Healthy	Multi	REMOVE	DIA	PROTECTED	1:1	10.6
2742	26.9	Ulmus crassifolia	CEDAR ELM	Healthy	Multi	REMOVE	DIA	SPECIMEN	1:10	26.9
2743	10.1	Celtis laevigata	HACKBERRY	Healthy	Single	REMOVE	DIA	PROTECTED	1:1	10.1
2744	20.2	Ulmus crassifolia	CEDAR ELM	Healthy	Multi	REMOVE	DIA	PROTECTED	1:1	20.2
2745	15.1	Prosopis glandulosa	MESQUITE	Healthy	Single	REMOVE	DIA	PROTECTED	1:1	15.1
2746	7.4	Ulmus crassifolia	CEDAR ELM	Healthy	Multi	REMOVE	DIA	PROTECTED	1:1	7.4
2747	6.6	Celtis laevigata	HACKBERRY	Healthy	Single	REMOVE	DIA	UNPROTECTED	0	0
2748	13.5	Prosopis glandulosa	MESQUITE	Declining	Single	REMOVE	DIA	UNPROTECTED	0	0
2749	7.2	Juniperus virginiana	EASTERN REDCEDAR	Healthy	Single	REMOVE	DIA	PROTECTED	1:1	7.2
2750	8.6	Celtis laevigata	HACKBERRY	Healthy	Single	REMOVE	DIA	UNPROTECTED	0	0

City of Coppell - Tree Mitigation Table										
Tag #	DBH	Scientific	Common	Health	Stems	Action	Location	Protected	Replacement Ratio	Mitigation Required
2751	6.9	Celtis laevigata	HACKBERRY	Healthy	Single	REMOVE	DIA	UNPROTECTED	0	0
2752	7.2	Ulmus crassifolia	CEDAR ELM	Healthy	Multi	REMOVE	DIA	PROTECTED	1:1	7.2
2753	6	Ulmus crassifolia	CEDAR ELM	Healthy	Single	REMOVE	DIA	PROTECTED	1:1	6
2754	6.5	Celtis laevigata	HACKBERRY	Healthy	Single	REMOVE	DIA	UNPROTECTED	0	0
2755	6.1	Prosopis glandulosa	MESQUITE	Declining	Single	REMOVE	DIA	UNPROTECTED	0	0
2756	6.6	Ulmus crassifolia	CEDAR ELM	Healthy	Single	REMOVE	DIA	PROTECTED	1:1	6.6
2757	7.8	Ulmus crassifolia	CEDAR ELM	Healthy	Multi	REMOVE	DIA	PROTECTED	1:1	7.8
2758	8.4	Celtis laevigata	HACKBERRY	Healthy	Single	REMOVE	DIA	UNPROTECTED	0	0
2759	6.5	Ulmus crassifolia	CEDAR ELM	Healthy	Single	REMOVE	DIA	PROTECTED	1:1	6.5
2760	6.4	Celtis laevigata	HACKBERRY	Healthy	Single	REMOVE	DIA	UNPROTECTED	0	0
2761	7.4	Ulmus crassifolia	CEDAR ELM	Healthy	Single	REMOVE	DIA	PROTECTED	1:1	7.4
2762	7.6	Celtis laevigata	HACKBERRY	Healthy	Single	REMOVE	DIA	UNPROTECTED	0	0
2763	8.1	Ulmus crassifolia	CEDAR ELM	Healthy	Single	REMOVE	DIA	PROTECTED	1:1	8.1
2764	6.2	Maclura pomifera	OSAGE-ORANGE	Healthy	Forked	REMOVE	DIA	UNPROTECTED	0	0
2765	10.6	Ulmus crassifolia	CEDAR ELM	Healthy	Single	REMOVE	DIA	PROTECTED	1:1	10.6
2766	6.7	Celtis laevigata	HACKBERRY	Healthy	Single	REMOVE	DIA	UNPROTECTED	0	0
2767	6.9	Ulmus crassifolia	CEDAR ELM	Healthy	Single	REMOVE	DIA	PROTECTED	1:1	6.9
2768	6.1	Ulmus crassifolia	CEDAR ELM	Healthy	Single	REMOVE	DIA	PROTECTED	1:1	6.1
2769	6.3	Ulmus crassifolia	CEDAR ELM	Healthy	Single	REMOVE	DIA	PROTECTED	1:1	6.3
2770	8.7	Ulmus crassifolia	CEDAR ELM	Healthy	Single	REMOVE	DIA	PROTECTED	1:1	8.7
2771	6	Ulmus crassifolia	CEDAR ELM	Healthy	Single	REMOVE	DIA	PROTECTED	1:1	6
2772	16.8	Ulmus crassifolia	CEDAR ELM	Healthy	Single	REMOVE	DIA	PROTECTED	1:1	16.8
2773	13.8	Ulmus crassifolia	CEDAR ELM	Healthy	Forked	REMOVE	DIA	PROTECTED	1:1	13.8
2774	12	Ulmus crassifolia	CEDAR ELM	Healthy	Single	REMOVE	DIA	PROTECTED	1:1	12
2775	17.8	Ulmus crassifolia	CEDAR ELM	Healthy	Single	REMOVE	DIA	PROTECTED	1:1	17.8
2776	15.2	Ulmus crassifolia	CEDAR ELM	Healthy	Multi	REMOVE	DIA	PROTECTED	1:1	15.2
2777	12.9	Ulmus crassifolia	CEDAR ELM	Healthy	Multi	REMOVE	DIA	PROTECTED	1:1	12.9
2778	14.4	Ulmus crassifolia	CEDAR ELM	Healthy	Multi	REMOVE	DIA	PROTECTED	1:1	14.4
2779	16.3	Ulmus crassifolia	CEDAR ELM	Healthy	Forked	REMOVE	DIA	PROTECTED	1:1	16.3
2780	15	Ulmus crassifolia	CEDAR ELM	Healthy	Forked	REMOVE	DIA	PROTECTED	1:1	15
2781	9.7	Ulmus crassifolia	CEDAR ELM	Healthy	Single	REMOVE	DIA	PROTECTED	1:1	9.7

City of Coppell - Tree Mitigation Table

Tag #	DBH	Scientific	Common	Health	Stems	Action	Location	Protected	Replacement Ratio	Mitigation Required
2961	7.1	Ulmus crassifolia	CEDAR ELM	Healthy	Forked	REMOVE	DIA	PROTECTED	1:1	7.1
2962	8.2	Ulmus crassifolia	CEDAR ELM	Healthy	Single	REMOVE	DIA	PROTECTED	1:1	8.2
2963	8.9	Ulmus crassifolia	CEDAR ELM	Healthy	Single	REMOVE	DIA	PROTECTED	1:1	8.9
2964	7.3	Ulmus crassifolia	CEDAR ELM	Healthy	Multi	REMOVE	DIA	PROTECTED	1:1	7.3
2965	10	Ulmus crassifolia	CEDAR ELM	Healthy	Single	REMOVE	DIA	PROTECTED	1:1	10
2966	7.8	Ulmus crassifolia	CEDAR ELM	Healthy	Single	REMOVE	DIA	PROTECTED	1:1	7.8
2967	7.7	Ulmus crassifolia	CEDAR ELM	Healthy	Forked	REMOVE	DIA	PROTECTED	1:1	7.7
2968	9.2	Ulmus crassifolia	CEDAR ELM	Healthy	Single	REMOVE	DIA	PROTECTED	1:1	9.2
2969	6.4	Ulmus crassifolia	CEDAR ELM	Healthy	Single	REMOVE	DIA	PROTECTED	1:1	6.4
2970	6	Ulmus crassifolia	CEDAR ELM	Healthy	Single	REMOVE	DIA	PROTECTED	1:1	6
2971	7.5	Ulmus crassifolia	CEDAR ELM	Healthy	Single	REMOVE	DIA	PROTECTED	1:1	7.5
2972	6.3	Maclura pomifera	OSAGE-ORANGE	Healthy	Single	REMOVE	DIA	UNPROTECTED	0	0
2973	9	Celtis laevigata	HACKBERRY	Healthy	Single	REMOVE	DIA	UNPROTECTED	0	0
2974	11.8	Ulmus americana	AMERICAN ELM	Healthy	Single	REMOVE	DIA	PROTECTED	1:1	11.8
2975	11.1	Maclura pomifera	OSAGE-ORANGE	Healthy	Multi	REMOVE	DIA	PROTECTED	1:1	11.1
2976	6.6	Celtis laevigata	HACKBERRY	Healthy	Single	REMOVE	DIA	UNPROTECTED	0	0
2977	7.2	Carya illinoensis	PECAN	Healthy	Single	REMOVE	DIA	PROTECTED	1:1	7.2
2978	16.7	Quercus stellata	POST OAK	Healthy	Single	REMOVE	DIA	PROTECTED	1:1	16.7
2979	8.5	Juniperus virginiana	EASTERN REDCEDAR	Healthy	Forked	REMOVE	DIA	PROTECTED	1:1	8.5
2980	6.6	Celtis laevigata	HACKBERRY	Healthy	Single	REMOVE	DIA	UNPROTECTED	0	0
2981	19.8	Juniperus virginiana	EASTERN REDCEDAR	Healthy	Multi	REMOVE	DIA	PROTECTED	1:1	19.8
2982	20.7	Ulmus crassifolia	CEDAR ELM	Healthy	Single	REMOVE	DIA	PROTECTED	1:1	20.7
2983	21.1	Carya illinoensis	PECAN	Healthy	Single	REMOVE	DIA	PROTECTED	1:1	21.1
2984	14.3	Juniperus virginiana	EASTERN REDCEDAR	Healthy	Multi	REMOVE	DIA	PROTECTED	1:1	14.3
2985	7	Ulmus crassifolia	CEDAR ELM	Healthy	Single	REMOVE	DIA	PROTECTED	1:1	7
2986	8.1	Ulmus crassifolia	CEDAR ELM	Healthy	Single	REMOVE	DIA	PROTECTED	1:1	8.1
2987	6	Ulmus crassifolia	CEDAR ELM	Healthy	Single	REMOVE	DIA	PROTECTED	1:1	6
2988	12.4	Juniperus virginiana	EASTERN REDCEDAR	Healthy	Single	REMOVE	DIA	PROTECTED	1:1	12.4
2989	6.9	Juniperus virginiana	EASTERN REDCEDAR	Healthy	Single	REMOVE	DIA	PROTECTED	1:1	6.9
2990	9.9	Ulmus crassifolia	CEDAR ELM	Healthy	Single	REMOVE	DIA	PROTECTED	1:1	9.9
2991	13.6	Juniperus virginiana	EASTERN REDCEDAR	Healthy	Single	REMOVE	DIA	PROTECTED	1:1	13.6
2992	13.2	Ulmus crassifolia	CEDAR ELM	Healthy	Single	REMOVE	DIA	PROTECTED	1:1	13.2
2993	6	Prosopis glandulosa	MESQUITE	Healthy	Forked	REMOVE	DIA	UNPROTECTED	0	0
2994	11.7	Prosopis glandulosa	MESQUITE	Healthy	Multi	REMOVE	DIA	PROTECTED	1:1	11.7
2995	9.9	Prosopis glandulosa	MESQUITE	Healthy	Multi	REMOVE	DIA	UNPROTECTED	0	0
2996	7.3	Populus deltoides	EASTERN COTTONWOOD	Healthy	Single	REMOVE	DIA	UNPROTECTED	0	0
2997	16	Populus deltoides	EASTERN COTTONWOOD	Healthy	Single	REMOVE	DIA	PROTECTED	1:1	16
2998	15.2	Populus deltoides	EASTERN COTTONWOOD	Healthy	Single	REMOVE	DIA	PROTECTED	1:1	15.2
2999	11.1	Populus deltoides	EASTERN COTTONWOOD	Healthy	Single	REMOVE	DIA	PROTECTED	1:1	11.1
3000	6.6	Populus deltoides	EASTERN COTTONWOOD	Healthy	Single	REMOVE	DIA	UNPROTECTED	0	0
3001	8	Prosopis glandulosa	MESQUITE	Healthy	Single	REMOVE	DIA	UNPROTECTED	0	0
3002	22.3	Prosopis glandulosa	MESQUITE	Healthy	Forked	REMOVE	BUILDING PAD	UNPROTECTED	0	0
3003	6.4	Prosopis glandulosa	MESQUITE	Healthy	Single	REMOVE	BUILDING PAD	UNPROTECTED	0	0
3004	6.2	Prosopis glandulosa	MESQUITE	Healthy	Single	REMOVE	BUILDING PAD	UNPROTECTED	0	0
3005	13.2	Prosopis glandulosa	MESQUITE	Healthy	Multi	REMOVE	DIA	PROTECTED	1:1	13.2
3006	6	Juniperus virginiana	EASTERN REDCEDAR	Healthy	Single	REMOVE	DIA	PROTECTED	1:1	6
3007	8.4	Gleditsia triacanthos	HONEY LOCUST	Healthy	Single	REMOVE	BUILDING PAD	UNPROTECTED	0	0
3008	8.4	Prosopis glandulosa	MESQUITE	Healthy	Single	REMOVE	BUILDING PAD	UNPROTECTED	0	0
3009	6.2	Prosopis glandulosa	MESQUITE	Healthy	Single	REMOVE	BUILDING PAD	UNPROTECTED	0	0
3010	6.1	Prosopis glandulosa	MESQUITE	Healthy	Single	REMOVE	BUILDING PAD	UNPROTECTED	0	0
3011	23	Quercus stellata	POST OAK	Healthy	Single	REMOVE	DIA	PROTECTED	1:1	23
3012	21.4	Prosopis glandulosa	MESQUITE	Declining	Single	REMOVE	BUILDING PAD	UNPROTECTED	0	0
3013	6.4	Juniperus virginiana	EASTERN REDCEDAR	Healthy	Single	REMOVE	BUILDING PAD	UNPROTECTED	0	0
3014	7.9	Juniperus virginiana	EASTERN REDCEDAR	Healthy	Multi	REMOVE	BUILDING PAD	UNPROTECTED	0	0
3015	6.4	Juniperus virginiana	EASTERN REDCEDAR	Healthy	Single	REMOVE	BUILDING PAD	UNPROTECTED	0	0
3016	14	Prosopis glandulosa	MESQUITE	Declining	Single	REMOVE	BUILDING PAD	UNPROTECTED	0	0
3017	6.2	Celtis laevigata	HACKBERRY	Healthy	Single	REMOVE	DIA	UNPROTECTED	0	0
3018	6.7	Celtis laevigata	HACKBERRY	Healthy	Single	REMOVE	DIA	UNPROTECTED	0	0
3019	6.8	Gleditsia triacanthos	HONEY LOCUST	Healthy	Single	REMOVE	DIA	PROTECTED	1:1	6.8
3020	7.5	Celtis laevigata	HACKBERRY	Healthy	Single	REMOVE	BUILDING PAD	UNPROTECTED	0	0
3021	13	Prosopis glandulosa	MESQUITE	Declining	Multi	REMOVE	DIA	UNPROTECTED	0	0
3022	7.4	Ulmus crassifolia	CEDAR ELM	Healthy	Single	REMOVE	BUILDING PAD	UNPROTECTED	0	0
3023	13.6	Ulmus crassifolia	CEDAR ELM	Healthy	Single	REMOVE	BUILDING PAD	UNPROTECTED	0	0
3024	16.3	Ulmus crassifolia	CEDAR ELM	Healthy	Multi	REMOVE	BUILDING PAD	UNPROTECTED	0	0
3025	14.4	Ulmus crassifolia	CEDAR ELM	Healthy	Single	REMOVE	BUILDING PAD	UNPROTECTED	0	0
3026	12.6	Prosopis glandulosa	MESQUITE	Declining	Single	REMOVE	DIA	UNPROTECTED	0	0
3027	15.4	Ulmus crassifolia	CEDAR ELM	Healthy	Single	REMOVE	DIA	PROTECTED	1:1	15.4
3028	14.3	Prosopis glandulosa	MESQUITE	Declining	Forked	REMOVE	BUILDING PAD	UNPROTECTED	0	0
3029	13.5	Prosopis glandulosa	MESQUITE	Declining	Multi	REMOVE	BUILDING PAD	UNPROTECTED	0	0
3030	6	Juniperus virginiana	EASTERN REDCEDAR	Healthy	Single	REMOVE	BUILDING PAD	UNPROTECTED	0	0
3031	15.2	Ulmus crassifolia	CEDAR ELM	Healthy	Multi	REMOVE	BUILDING PAD	UNPROTECTED	0	0
3032	11.9	Prosopis glandulosa	MESQUITE	Healthy	Multi	REMOVE	BUILDING PAD	UNPROTECTED	0	0
3033	6.6	Gleditsia triacanthos	HONEY LOCUST	Healthy	Single	REMOVE	BUILDING PAD	UNPROTECTED	0	0
3034	16.1	Prosopis glandulosa	MESQUITE	Healthy	Single	REMOVE	BUILDING PAD	UNPROTECTED	0	0
3035	8.2	Pyrus calleryana	Callery pear	Healthy	Multi	REMOVE	BUILDING PAD	UNPROTECTED	0	0
3036	8.4	Fraxinus texensis	Texas ash	Healthy	Single	REMOVE	BUILDING PAD	UNPROTECTED	0	0
3037	6.7	Celtis laevigata	HACKBERRY	Healthy	Single	REMOVE	BUILDING PAD	UNPROTECTED	0	0
3038	6.3	Ulmus crassifolia	CEDAR ELM	Healthy	Forked	REMOVE	BUILDING PAD	UNPROTECTED	0	0
3039	6.4	Gleditsia triacanthos	HONEY LOCUST	Healthy	Single	REMOVE	BUILDING PAD	UNPROTECTED	0	0
3040	16.5	Prosopis glandulosa	MESQUITE	Declining	Forked	REMOVE	BUILDING PAD	UNPROTECTED	0	0
3041	9	Prosopis glandulosa	MESQUITE	Declining	Single	REMOVE	BUILDING PAD	UNPROTECTED	0	0
3042	8.1	Quercus virginiana	live oak	Healthy	Single	REMOVE	BUILDING PAD	UNPROTECTED	0	0
3043	6.2	Juniperus virginiana	EASTERN REDCEDAR	Healthy	Single	REMOVE	BUILDING PAD	UNPROTECTED	0	0
3044	6.3	Maclura pomifera	OSAGE-ORANGE	Healthy	Single	REMOVE	BUILDING PAD	UNPROTECTED	0	0
3045	7.2	Prosopis glandulosa	MESQUITE	Declining	Single	REMOVE	BUILDING PAD	UNPROTECTED	0	0
3046	15.8	Ulmus crassifolia	CEDAR ELM	Healthy	Single	REMOVE	BUILDING PAD	UNPROTECTED	0	0
3047	10.3	Ulmus crassifolia	CEDAR ELM	Healthy	Single	REMOVE	BUILDING PAD	UNPROTECTED	0	0
3048	6.5	Ulmus crassifolia	CEDAR ELM	Healthy	Single	REMOVE	BUILDING PAD	UNPROTECTED	0	0
3049	6.6	Ulmus crassifolia	CEDAR ELM	Healthy	Single	REMOVE	BUILDING PAD	UNPROTECTED	0	0
3050	15.7	Quercus stellata	POST OAK	Healthy	Single	REMOVE	DIA	PROTECTED	1:1	15.7
3051	7.1	Quercus shumardii	SHUMARD OAK	Healthy	Multi	REMOVE	OFFSITE	PROTECTED	1:1	7.1
3052	13	Quercus shumardii	SHUMARD OAK	Healthy	Multi	REMOVE	DIA	PROTECTED	1:1	13
3053	12.3	Ulmus crassifolia	CEDAR ELM	Healthy	Single	REMOVE	BUILDING PAD	UNPROTECTED	0	0
3054	6.1	Celtis laevigata	HACKBERRY	Healthy	Single	REMOVE	BUILDING PAD	UNPROTECTED	0	0
3055	10.4	Ulmus alata	winged elm	Healthy	Single	REMOVE	BUILDING PAD	UNPROTECTED	0	0
3056	10.4	Ulmus alata	winged elm	Healthy	Single	REMOVE	BUILDING PAD	UNPROTECTED	0	0
3057	7.7	Celtis laevigata	HACKBERRY	Healthy	Single	REMOVE	BUILDING PAD	UNPROTECTED	0	0
3058	7.6	Ulmus crassifolia	CEDAR ELM	Healthy	Single	REMOVE	BUILDING PAD	UNPROTECTED	0	0
3059	15.9	Ulmus crassifolia	CEDAR ELM	Healthy	Multi	REMOVE	BUILDING PAD	UNPROTECTED	0	0
3060	6.7	Celtis laevigata	HACKBERRY	Healthy	Single	REMOVE	BUILDING PAD	UNPROTECTED	0	0
3061	11.4	Ulmus crassifolia	CEDAR ELM	Healthy	Single	REMOVE	BUILDING PAD	UNPROTECTED	0	0
3062	20.2	Prosopis glandulosa	MESQUITE	Hazard	Forked	REMOVE	BUILDING PAD	UNPROTECTED	0	0
3063	15.8	Prosopis glandulosa	MESQUITE	Declining	Forked	REMOVE	BUILDING PAD	UNPROTECTED	0	0
3064	16.3	Prosopis glandulosa	MESQUITE	Declining	Single	REMOVE	BUILDING PAD	UNPROTECTED	0	0
3065	13.7	Prosopis glandulosa	MESQUITE	Declining	Single	REMOVE	BUILDING PAD	UNPROTECTED	0	0

City of Coppell - Tree Mitigation Table

Tag #	DBH	Scientific	Common	Health	Stems	Action	Location	Protected	Replacement Ratio	Mitigation Required
3066	10	Ulmus alata	winged elm	Healthy	Single	REMOVE	BUILDING PAD	UNPROTECTED	0	0
3067	31.9	Prosopis glandulosa	MESQUITE	Declining	Multi	REMOVE	BUILDING PAD	UNPROTECTED	0	0
3068	18.8	Prosopis glandulosa	MESQUITE	Declining	Multi	REMOVE	BUILDING PAD	UNPROTECTED	0	0
3069	6.8	Ulmus crassifolia	CEDAR ELM	Healthy	Single	REMOVE	BUILDING PAD	UNPROTECTED	0	0
3070	6.7	Ulmus crassifolia	CEDAR ELM	Healthy	Single	REMOVE	BUILDING PAD	UNPROTECTED	0	0
3071	7.5	Ulmus crassifolia	CEDAR ELM	Healthy	Single	REMOVE	BUILDING PAD	UNPROTECTED	0	0
3072	25.6	Prosopis glandulosa	MESQUITE	Healthy	Multi	REMOVE	BUILDING PAD	UNPROTECTED	0	0
3073	10.2	Prosopis glandulosa	MESQUITE	Healthy	Multi	REMOVE	BUILDING PAD	UNPROTECTED	0	0
3074	6.3	Prosopis glandulosa	MESQUITE	Healthy	Single	REMOVE	BUILDING PAD	UNPROTECTED	0	0
3075	8	Prosopis glandulosa	MESQUITE	Healthy	Single	REMOVE	BUILDING PAD	UNPROTECTED	0	0
3076	10.8	Prosopis glandulosa	MESQUITE	Healthy	Multi	REMOVE	BUILDING PAD	UNPROTECTED	0	0
3077	13.1	Prosopis glandulosa	MESQUITE	Healthy	Single	REMOVE	BUILDING PAD	UNPROTECTED	0	0
3078	21.9	Ulmus crassifolia	CEDAR ELM	Healthy	Multi	REMOVE	BUILDING PAD	UNPROTECTED	0	0
3079	7.6	Ulmus crassifolia	CEDAR ELM	Healthy	Single	REMOVE	BUILDING PAD	UNPROTECTED	0	0
3080	9.4	Prosopis glandulosa	MESQUITE	Declining	Single	REMOVE	BUILDING PAD	UNPROTECTED	0	0
3081	8.4	Quercus stellata	POST OAK	Healthy	Single	REMOVE	BUILDING PAD	UNPROTECTED	0	0
3082	14.3	Quercus stellata	POST OAK	Healthy	Single	REMOVE	BUILDING PAD	UNPROTECTED	0	0
3083	14.4	Ulmus crassifolia	CEDAR ELM	Healthy	Multi	REMOVE	BUILDING PAD	UNPROTECTED	0	0
3084	9.7	Prosopis glandulosa	MESQUITE	Declining	Single	REMOVE	BUILDING PAD	UNPROTECTED	0	0
3085	6.5	Ulmus crassifolia	CEDAR ELM	Healthy	Single	REMOVE	BUILDING PAD	UNPROTECTED	0	0
3086	6.3	Prosopis glandulosa	MESQUITE	Healthy	Single	REMOVE	BUILDING PAD	UNPROTECTED	0	0
3087	6.7	Ulmus crassifolia	CEDAR ELM	Healthy	Single	REMOVE	BUILDING PAD	UNPROTECTED	0	0
3089	12.3	Celtis laevigata	HACKBERRY	Healthy	Single	REMOVE	BUILDING PAD	UNPROTECTED	0	0
3091	6.1	Celtis laevigata	HACKBERRY	Healthy	Single	REMOVE	BUILDING PAD	UNPROTECTED	0	0
3092	9.2	Maclura pomifera	OSAGE-ORANGE	Healthy	Single	REMOVE	BUILDING PAD	UNPROTECTED	0	0
3093	7.4	Gleditsia triacanthos	HONEY LOCUST	Healthy	Single	REMOVE	BUILDING PAD	UNPROTECTED	0	0
3094	8.5	Juniperus virginiana	EASTERN REDCEDAR	Healthy	Single	REMOVE	BUILDING PAD	UNPROTECTED	0	0
3095	16.1	Ulmus crassifolia	CEDAR ELM	Healthy	Single	REMOVE	BUILDING PAD	UNPROTECTED	0	0
3096	12.3	Ulmus crassifolia	CEDAR ELM	Healthy	Single	REMOVE	BUILDING PAD	UNPROTECTED	0	0
3097	8.6	Juniperus virginiana	EASTERN REDCEDAR	Healthy	Single	REMOVE	BUILDING PAD	UNPROTECTED	0	0
3098	12.3	Prosopis glandulosa	MESQUITE	Declining	Single	REMOVE	BUILDING PAD	UNPROTECTED	0	0
3099										

