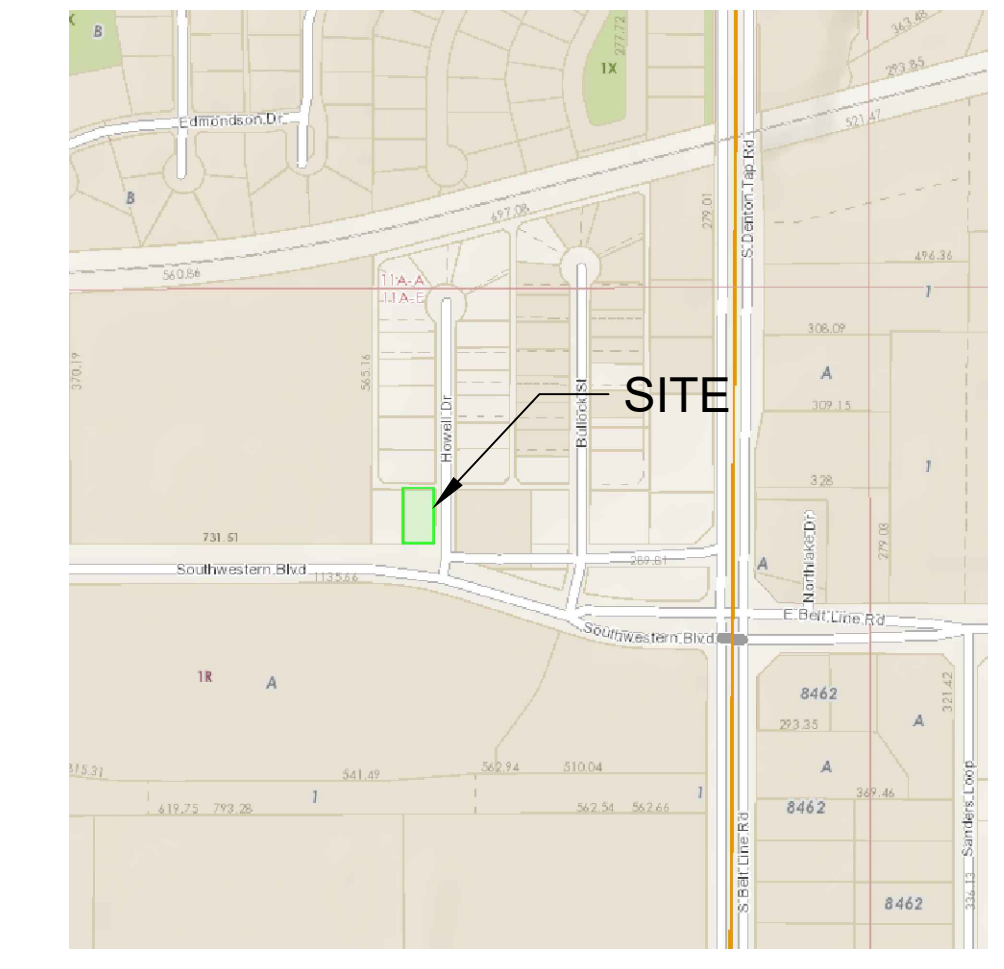
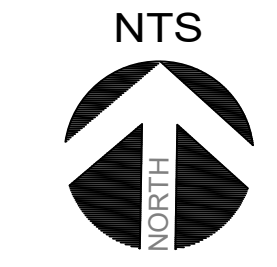


### PLANT MATERIAL LIST SUMMARY CHART

SYM	QNTY	COMMON NAME	BOTANICAL NAME	SIZE
<b>TREES</b>				
3		BIG TOOTH MAPLE	<i>Acer grandidentatum</i>	3" CAL.; 12' MIN HT; 30 GAL MIN. CONT.
3		LACEBARK ELM	<i>Ulmus parvifolia</i>	3" CAL.; 12' MIN HT; 30 GAL MIN. CONT.
2		CHINQUAPIN OAK	<i>Quercus muhlenbergii</i>	3" CAL.; 12' MIN HT; 30 GAL MIN. CONT.
4		CHINESE PISTACHE	<i>Pistacia chinensis</i>	3" CAL.; 12' MIN HT; 30 GAL MIN. CONT.
9		SOUTHERN WAX MYRTLE	<i>Myrica cerifera</i>	2" CAL.; 12' MIN HT; 30 GAL MIN. CONT.
<b>SHRUBS</b>				
19		GREEN CLOUD SAGE	<i>Ilex vomitoria 'Nana'</i>	2' HGT; 5 GALLON CONT.; 3' O.C.
32		SUNSHINE LIGUSTRUM	<i>Ligustrum sinense 'Sunshine'</i>	2' HGT; 5 GALLON CONT.; 3' O.C.
43		TEXAS SEDGE	<i>Carex texensis</i>	12" HGT; 1 GALLON CONT.; 3' O.C.
29		BLUE RUG JUNIPER	<i>Juniperus horizontalis</i>	8" HGT; 1 GALLON CONT.; 3' O.C.
18		SPREADING JAPANESE YEW	<i>Taxus cuspidata</i>	8" HGT; 1 GALLON CONT.; 3' O.C.
<b>GROUNDCOVER/TURF GRASS</b>				
4580		COMMON BERMUDA	<i>Cynodon dactylon</i>	SOD; SF
612		BLACK RIVER ROCK	1-2"	2 INCH DEPTH; CY



VICINITY MAP



LANDSCAPE DATA TABLE		
Existing Zoning	C	
Proposed Use	BUSINESS OFFICE	
Lot Area (square feet)	10,048 SF	
<b>Interior Landscape</b>	<b>REQUIRED</b>	<b>PROVIDED</b>
10% of paving area	330	3300
One Tree per 400 SF	2	4
One 150 SF planting island at the end of each single row of parking with overstory tree required	2	2
<b>Perimeter Landscaping (Landscape Buffers)</b>		
Howell Drive (EAST)	15 FT	15 FT
Southwestern Boulevard (SOUTH)	15 FT	70 FT
Adjacent property (WEST)	10 FT	10 FT
Alley (NORTH)	10 FT	Screening provided by fence
Overstory trees - 1 per 50 LF (418 total LF)	9 Trees	10 Trees
<b>Nonvehicular Open Space</b>		
Min 15% of lot area not covered by building (10,048-1,800=8,248 x .15)	1,237 SF	2,214 SF
50% of nonvehicular open space to be in front yard	619	1350
1 Tree/4,000 SF of Open Space Area	2	2
<b>Overall Landscape Area</b>		
Min 30% of lot area to be landscape area	3,015 SF	3,652 SF (36%)
<b>TOTAL TREES</b>	15	15

**LANDSCAPE REQUIREMENTS EXISTING & PROPOSED:**

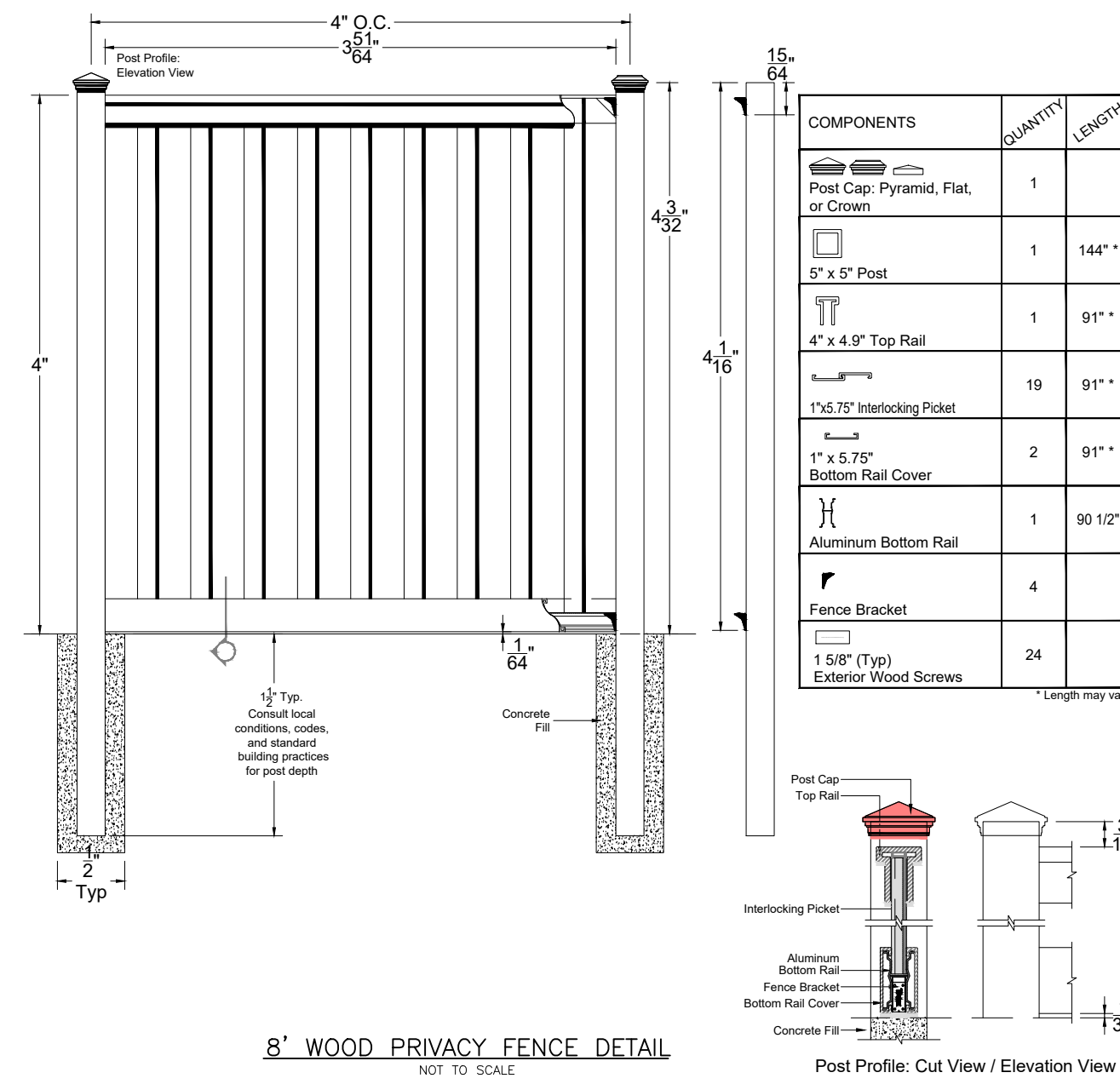
- TREES**
  - 9 REQUIRED
  - 9 PROVIDED (7 SMALL CANOPY TREES & 6 LARGE)
- INTERIOR LANDSCAPING**
  - 330 SF REQUIRED
  - 431 SF PROVIDED
  - TREES**
    - 2 REQUIRED
    - 0 PROVIDED
- NON-VEHICULAR LANDSCAPING**
  - 1,237 SF REQUIRED
  - 298 SF PROVIDED
  - TREES**
    - 2 REQUIRED
    - 0 PROVIDED

PERCENTAGE OF SITE AREA DEVOTED TO LANDSCAPING: 36%  
 AREA OF ROW DEVOTED TO LANDSCAPING: 2,033 SF

ADDITIONAL TREES MAY BE PLANTED ONCE THE UNDERGROUND LINE HAS BEEN ABANDONED

**LANDSCAPE NOTES:**

- Provide an automatic irrigation system as required by city ordinance
- No existing trees on site therefore no mitigation or tree protection is required
- No trees to be planted under existing power lines; trees to be planted a minimum of 12 feet in either direction of power lines.



OWNER/DEVELOPER:

GRAYSTONE CONSTRUCTION, LLC  
 CONTACT: DANNY DIDYK  
 1300 POWDER RIVER TRL  
 SOUTHLAKE, TX 76092  
 TEL: 214-761-3461  
 EMAIL: danny@graystoneconstruction.com

E. BROOKE ASSOCIATES, LLC  
 P: 817.219.2665  
 E: erin@ebrooke.com



CIVIL ENGINEERING DESIGN & CONSULTING  
 (Tex. Reg. No. F-456)  
 4144 N. CENTRAL EXPWY, SUITE 340  
 DALLAS, TEXAS 75243  
 TEL 214-373-1180  
 daytonm@macatee-engineering.com

