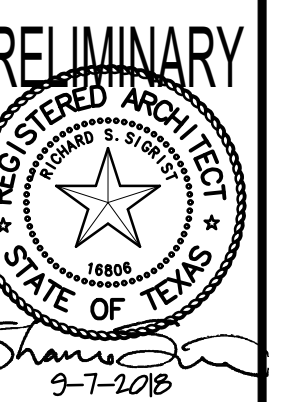


PRELIMINARY - FOR REVIEW ONLY

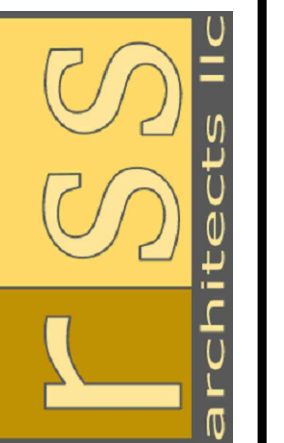
REVISIONS	BY

HOTEL PROJECT
Dividend Blvd. & Point W. Blvd. (Near 635)
Coppell, Texas

HOMEWOOD SUITES
Hilton



1029 LONG PRAIRIE ROAD
SUITE E
FLOWER MOUND, TX 75022
817/538-9258
RSS-ARCHITECTS.COM



Date 9-7-2018

Job 17078

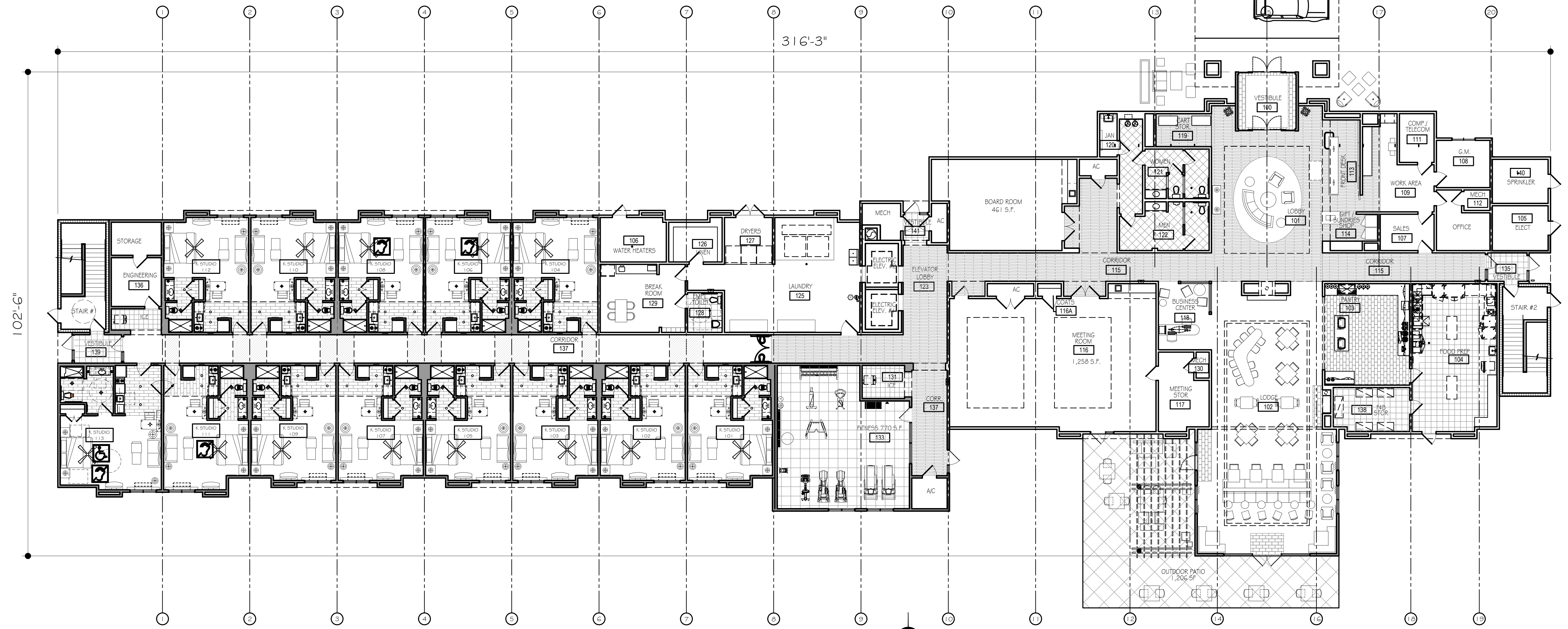
Sheet

A-301

Exhibit E

HOTEL DESIGN FEATURES / AMENITIES:	
minimum of 125 rooms	129
minimum room size of 285 square feet	459
interior climate-controlled corridor	✓
lobby/waiting/atrium areas - min 750 sq. ft. or 5 sq. ft. per guest room	966
Restaurant - limited service	✓ (Breakfast & HH)
porte-cochere or other covered area	✓
Meeting space 1,200 sq. ft.	1,258 + 461
minimum of 2 acres	3,024
Min. separation of 1,500 other residence hotel	✓
Contain Kitchen Facilities	✓
Maximum 22 dwelling units per acre	X (43 du/acre)
Optional Amenities - include min. of 3	
Indoor/outdoor pool (min 600 sq. ft. water surface area)	800 sq. ft.
Equipped Weight room/fitness center (min. 600 sq. ft.)	700 sq. ft.
Play ground	
Sports court	750 sq. ft.
Jogging trail (min 1/4 mile)	
Gift/pantry Snack Shop (min. 300 sq. ft.)	
Meeting space 5,000 sq. ft.	
Full service restaurant (minimum seating capacity of 35)	
Outdoor Plaza (1,000 sq. ft.)	1,206 sq. ft.

FIRST FLOOR	13 GUEST ROOMS
SECOND FLOOR	29 GUEST ROOMS
THIRD FLOOR	29 GUEST ROOMS
FOURTH FLOOR	29 GUEST ROOMS
FIFTH FLOOR	29 GUEST ROOMS
TOTAL GUEST ROOMS = 129	



1 FIRST FLOOR PLAN
SCALE: 1/8" = 1'-0"