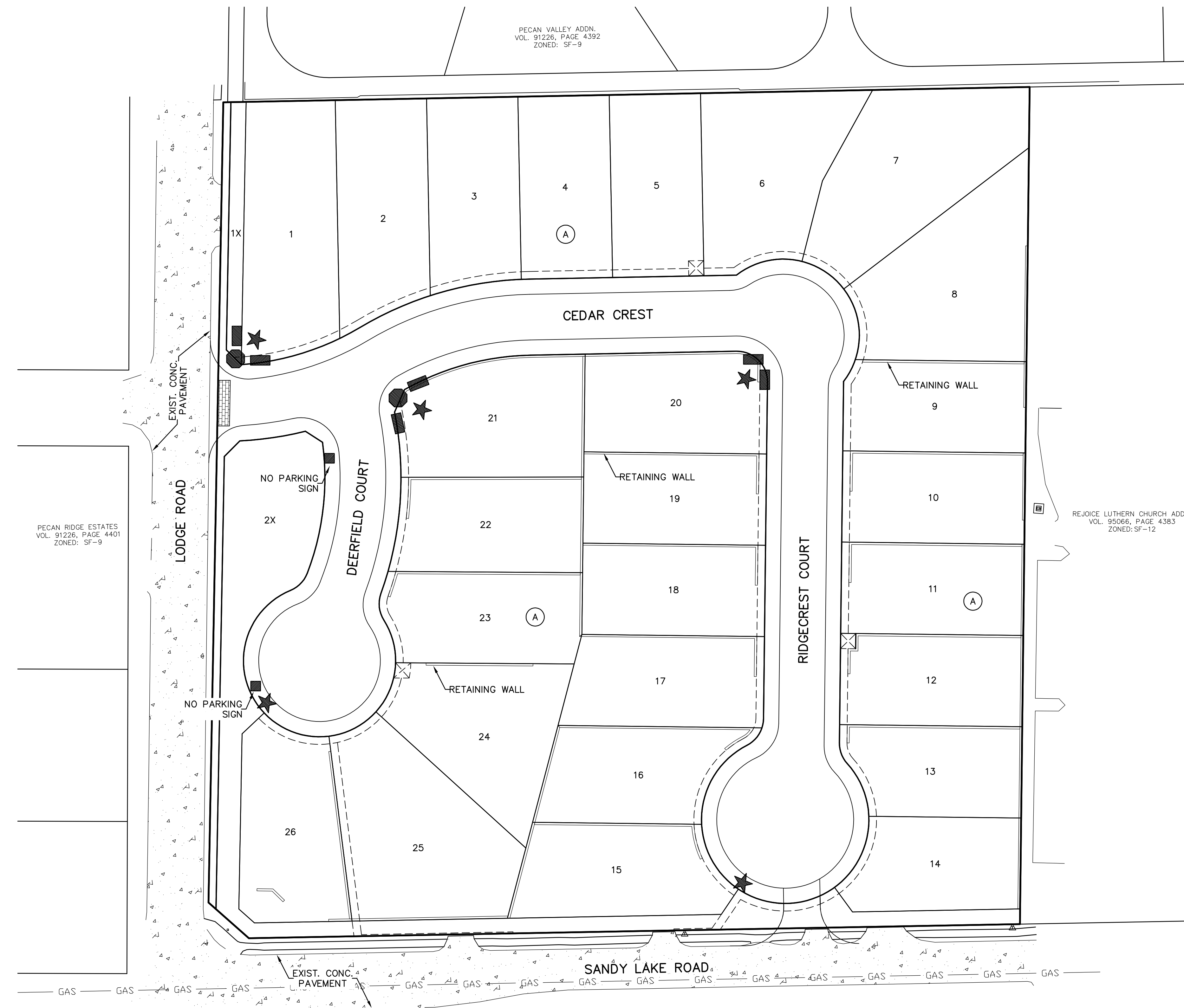
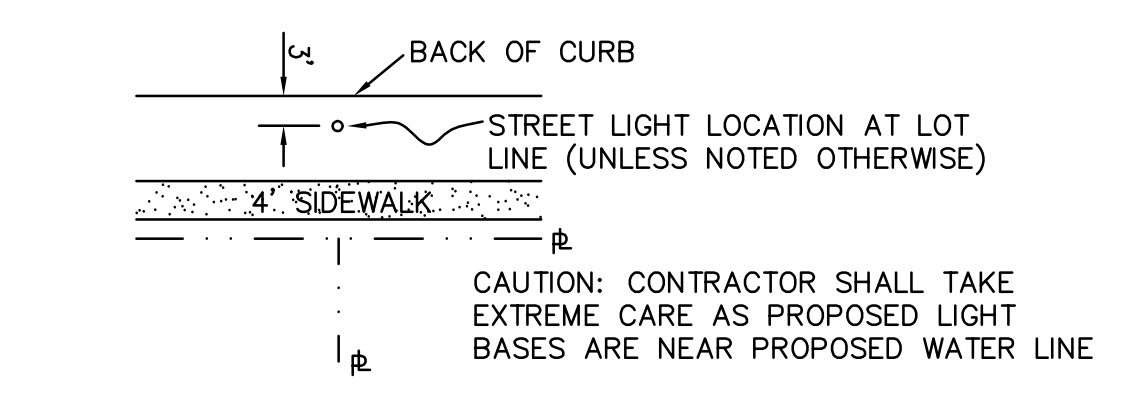
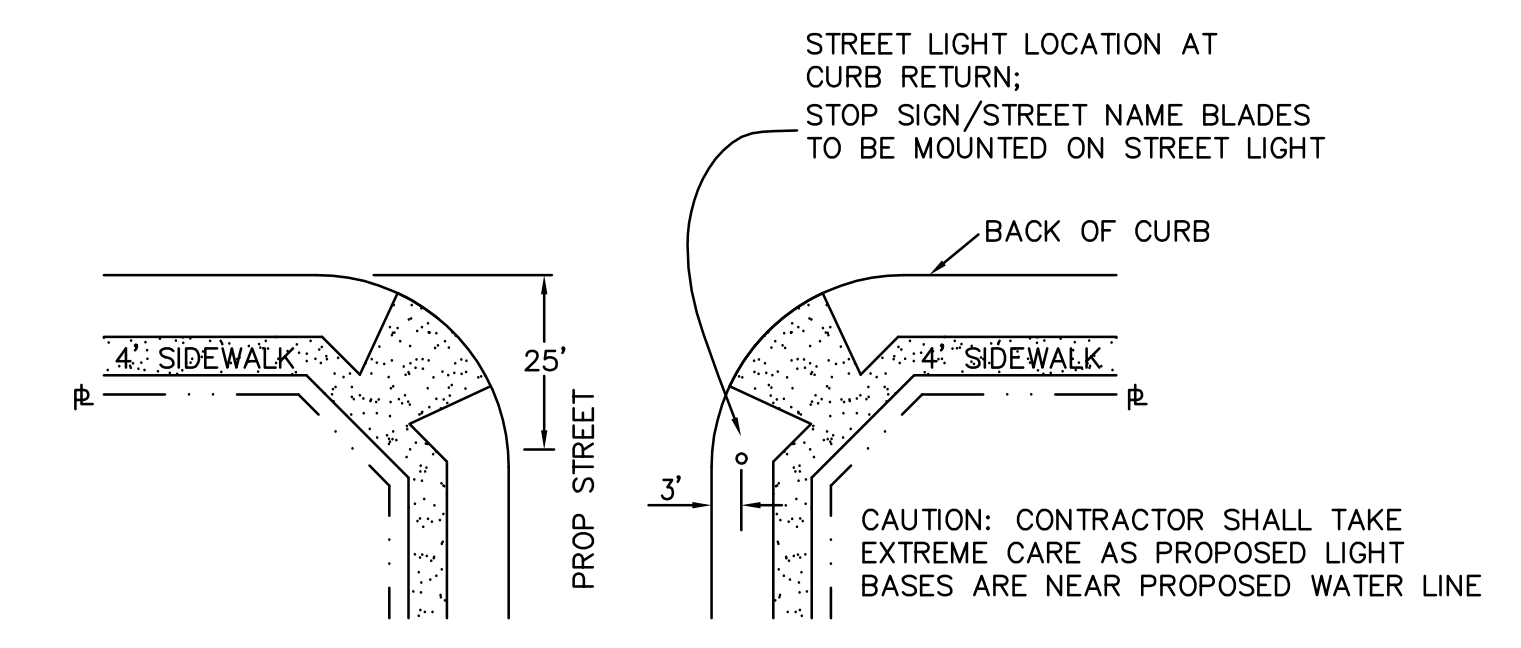


LEGEND

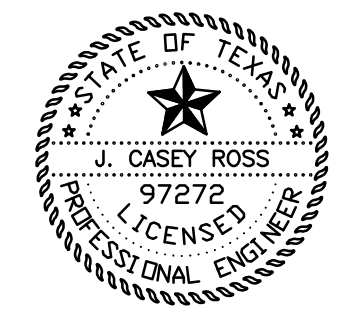
- ★ — STREET LIGHT
- — STREET NAME SIGN
- — STOP SIGN

SIGN & LIGHT TABLE	
ITEM	NUMBER
STOP SIGNS	2
STREET NAME BLADES	6
STREET LIGHT	5



RECORD DRAWINGS JUNE 03, 2013
 NOTE: THE INTENT OF THE OWNER AND ENGINEER WAS TO CONSTRUCT THE IMPROVEMENTS ACCORDING TO THESE PLANS AS APPROVED BY THE CITY OF COPPELL. THE LINES AND GRADES WERE SET ON THE GROUND FOR CONSTRUCTION ACCORDING TO SAID PLANS. WE ARE NOT AWARE OF ANY CHANGES OR REVISIONS TO THESE PLANS DURING CONSTRUCTION EXCEPT AS NOTED ON THE PLANS.

THESE CONSTRUCTION PLANS WERE PREPARED UNDER THE RESPONSIBLE SUPERVISION OF J. CASEY ROSS, LICENSED PROFESSIONAL ENGINEER NO. 97272.



BENCHMARKS:
 CITY OF COPPELL MONUMENT NO. 14
 ALUMINUM MARKER SET IN THE NORTH SIDE OF AN INLET ON THE WEST SIDE OF MOORE ROAD IN FRONT OF BARBARA AUSTIN ELEMENTARY, APPROXIMATELY 63' FORTH OF PHEASANT LANE.
 ELEVATION = 508.48' (PLAN) 508.04' (FIELD)

 CITY OF COPPELL MONUMENT NO. 16
 ALUMINUM MARKER SET IN THE CENTER OF AN INLET ON THE NORTH SIDE OF BETHEL SCHOOL ROAD, APPROXIMATELY 104' WEST OF HUNTERS RIDGE CIRCLE.
 ELEVATION = 511.13' (PLAN) 510.77' (FIELD)

NO.	DATE	BY	REVISION

STREET LIGHT AND SIGN PLAN					
RIDGECREST ESTATES					
CITY OF COPPELL					
DALLAS COUNTY, TEXAS					
DOWDEY, ANDERSON & ASSOCIATES, INC.					
5225 Village Creek Drive, Suite 200 Plano, Texas 75093 972-931-0694					
STATE REGISTRATION NUMBER: F-399					
DESIGN	DRAWN	CHECKED	DATE	SCALE	JOB
CWH	CWH	JCR	7/18/2012	1" = 40'	11023
					1

Y:\110231-1023-STLIGHT.dwg, STLIGHT, 7/1/2013 9:33:08 AM, chefflich, Dowdey, Anderson & Associates, Inc., CH