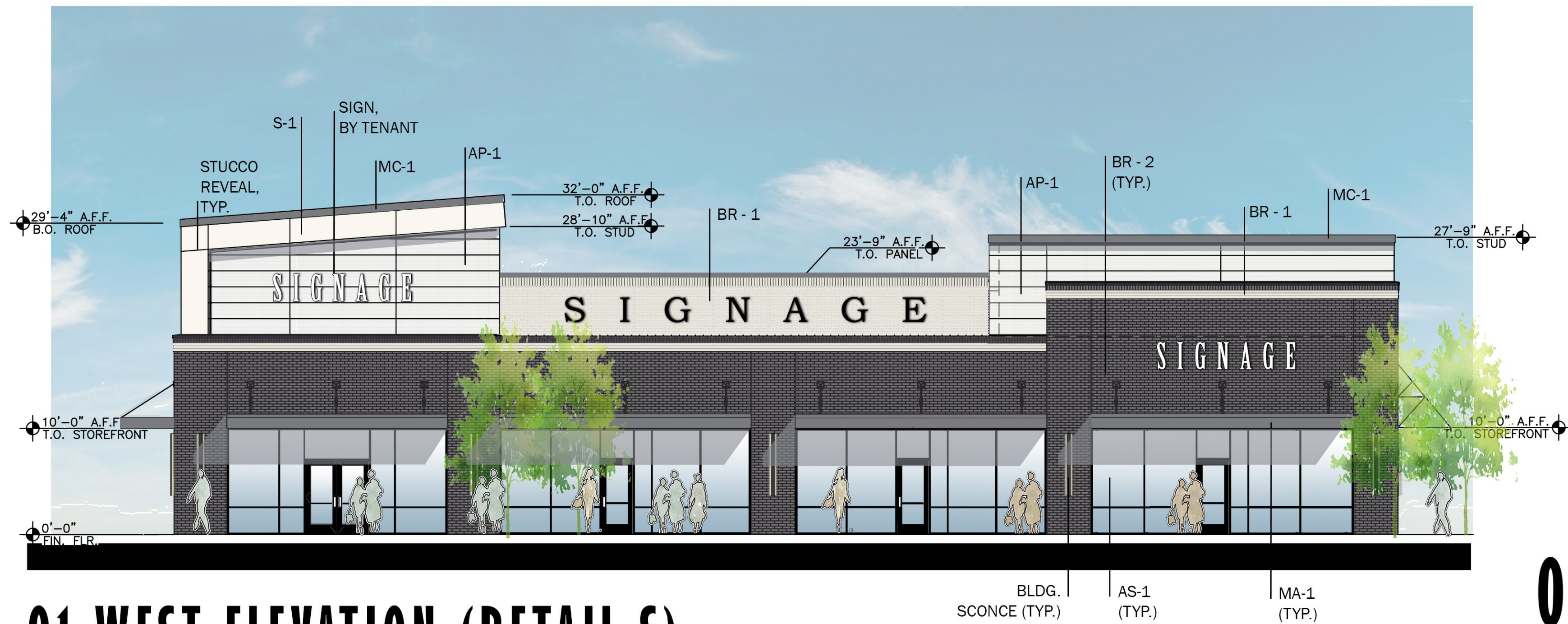
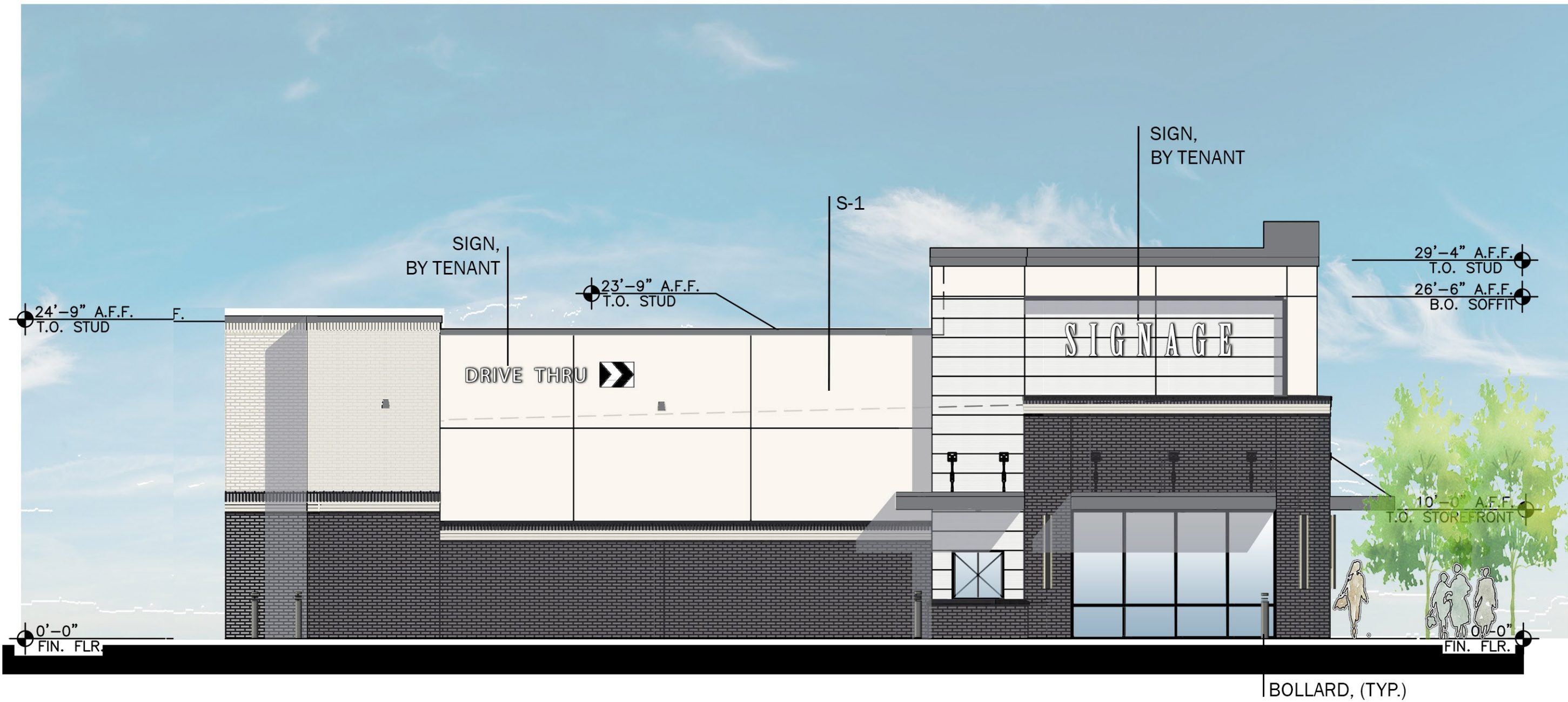


APPROVAL SIGNATURE AND DATE



01 WEST ELEVATION (RETAIL S)



02 NORTH ELEVATION (RETAIL S)

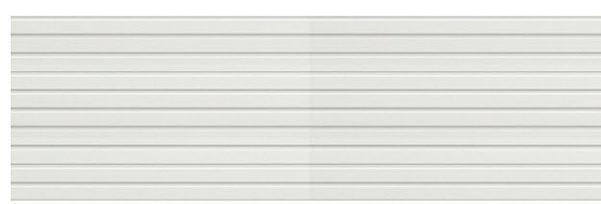
Material textures and colors are provided for delineation purposes. Although every attempt has been made to match the materials selected, actual material and patterns may vary. When viewing or printing this sheet colors may vary depending on the device used.



B-1 - LIGHT BRICK



B-2 - DARK BRICK



AP-1 - NICHIA SMOOTH PANEL



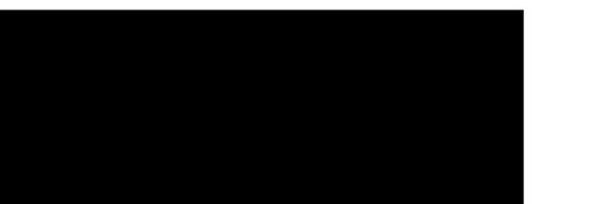
P-1 - PAINT/STUCCO



P-3 - PAINT/STUCCO



PM-1 - PREFINISHED METAL  
MC-1 - METAL COPING  
MA-1 - METAL AWNING



AS-1 - ALUMINUM STOREFRONT  
BLACK ANODIZED

# VICTORY SHOPS AT COPPELL, COPPELL, TEXAS

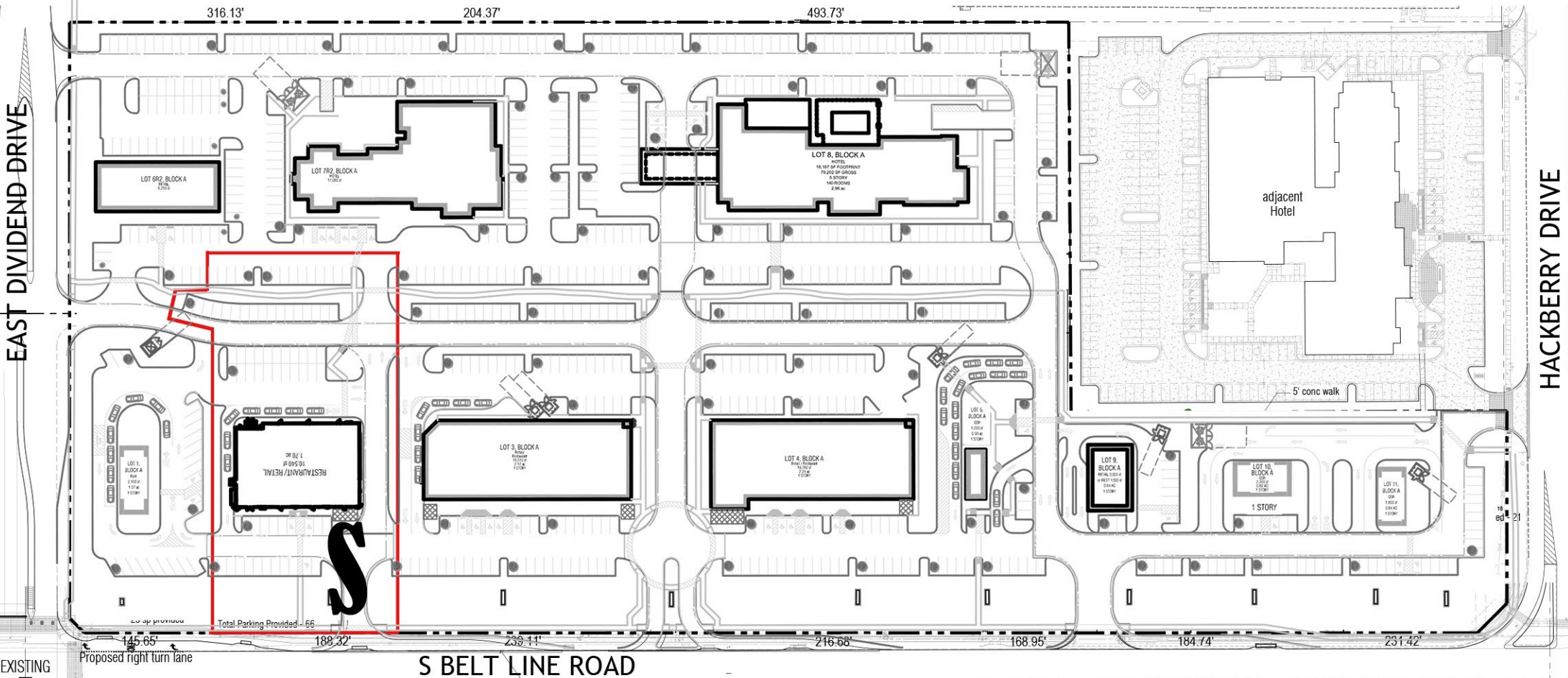
NOTE: ELEVATION RENDERING CONCEPTUAL STUDY IS PROVIDED TO RELAY DESIGN CONCEPT, VERTICAL/HORIZONTAL ARTICULATION, AND MATERIAL DELINEATION. MATERIALS AND DETAIL SUBJECT TO CHANGE DURING DESIGN DEVELOPMENT. GENERAL DESIGN TO REMAIN IN SIMILAR CONTEXT AND COLOR PALETTE. PLANTING AND ENTOURAGE ADDED FOR ARTISTIC PURPOSES ONLY.

SIGNS ARE FOR ILLUSTRATIVE PURPOSES ONLY, BUILDING SIGNS WILL COMPLY WITH CITY ORDINANCES

VICTORY SHOP AT COPPELL- MATERIAL SCHEDULE	
NOTE: ALL MATERIALS AND COLORS SUBJECT TO CHANGE DUE TO AVAILABILITY.(WITH STAFF APPROVAL) ALTERNATE MATERIALS TO REMAIN IN SIMILAR COLOR PALETTE. EXPOSED FACE BRICK, STONE & MORTAR JOINTS ARE TO RECEIVE A CLEAR WATER REPELLENT COATING. REFER TO SPECIFICATIONS. BRICK (SUBJECT TO OWNER APPROVAL) (FULL DEPTH)	
BR-1: ELGIN BULTER PRODUCTS FOR CREATIVE ARCHITECTURE GLAZED BRICK / COLOR: # 7100 POLAR WHITE / KING BRICK	
BR-2: ENDICOTT CLAY PRODUCT MANGANESE IRONSPOT / TEXTURE: VELOUR / SIZE: KING	
PREFINISHED METALS	ALUMINUM STOREFRONT AS-1: BLACK ANODIZED
PM-1: BERRIDGE MANUF. COMPANY, COLOR: PREWEATHERED GALVALUME	ARCHITECTURAL PANELS AP-1: FIBER CEMENT SIDING PRODUCTS NICHIA ILLUMINATION DESIGNER SERIES AW3030 /COLOR TO MATCH P-1 / PANEL ORIENTATION: HORIZONTAL / FINISH: SATIN / SMOOTH FIBER CEMENT SIDING PRODUCTS NICHIA ILLUMINATION DESIGNER SERIES AW1818 / COTTON / PANEL ORIENTATION: HORIZONTAL / FINISH: SATIN / SMOOTH AP-2: KNOTWOOD POWDER COATED ON BERRIDGE METAL SOFFIT / FINISH: WHITE ASH
PAINT / TEXTURE COAT / STUCCO P-1, S-1 BENJAMIN MOORE CLASSIC COLOR: WHITE DOVE FINISH: SMOOTH ON TOWER ELEMENT (SUBMIT FOR APPROVAL) P-2, S-2 BENJAMIN MOORE COLOR: PREVIEW : 2121-20 STEEL WOOL P-3, S-3 SHERWIN WILLIAMS SW7069 IRON ORE FINISH: FINE SAND (SUBMIT FOR APPROVAL)	METAL COPING MC-1: BERRIDGE MANUF. COMPANY, COLOR: PREWEATHERED GALVALUME METAL AWNING MA-1: BERRIDGE MANUF. COMPANY, COLOR: PREWEATHERED GALVALUME



KEY PLAN



LOCATION PLAN



LOT 2 - RETAIL S 20079-02

SHEET-1

08/11/25



APPROVAL SIGNATURE AND DATE



03 EAST ELEVATION (RETAIL S)



04 SOUTH ELEVATION (RETAIL S)

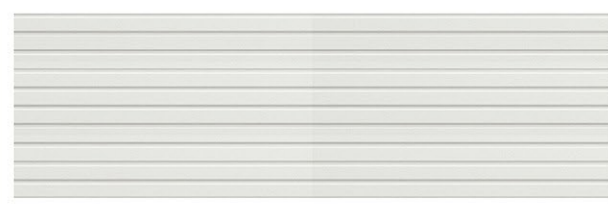
Material textures and colors are provided for delineation purposes. Although every attempt has been made to match the materials select actual material and patterns may vary. When viewing or printing this sheet colors may vary depending on the devise used.



B-1 - LIGHT BRICK



B-2 - DARK BRICK



AP-1 - NICHIIA SMOOTH PANEL



P-1 - PAINT/STUCCO



P-3 - PAINT/STUCCO

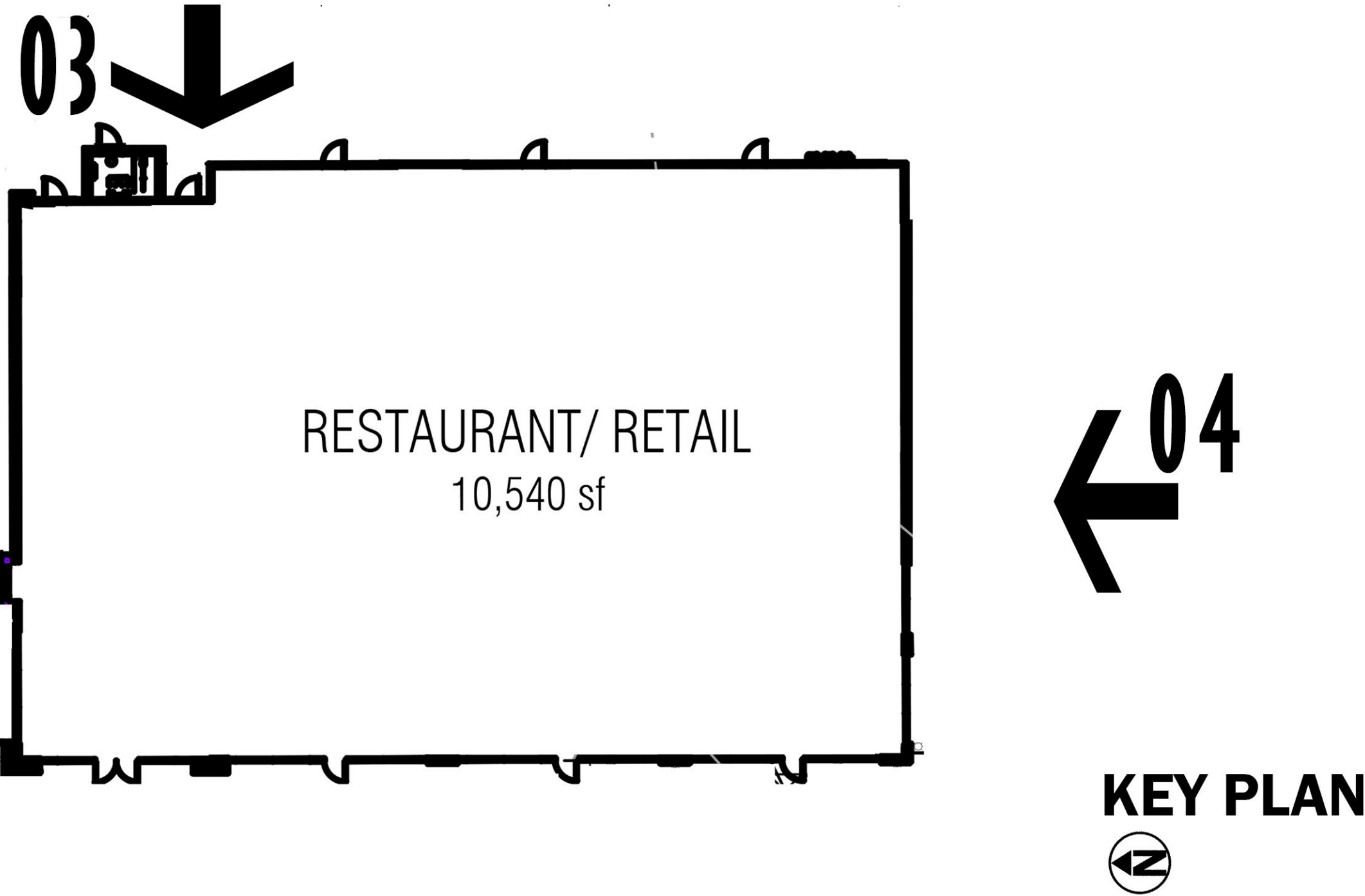


PM-1 - PREFINISHED METAL  
MC-1 - METAL COPING  
MA-1 - METAL AWNING

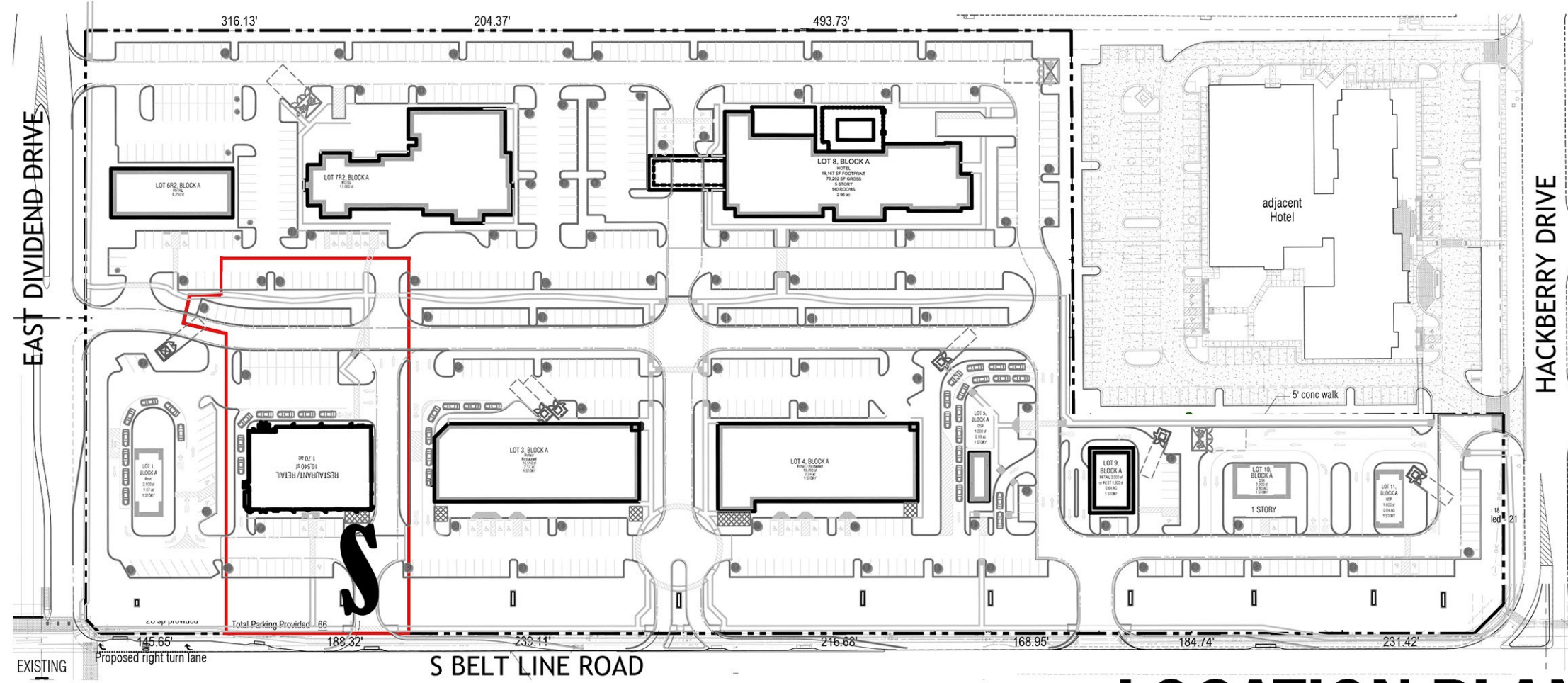


AS-1 - ALUMINUM STOREFRONT  
BLACK ANODIZED

VICTORY SHOP AT COPPELL- MATERIAL SCHEDULE	
NOTE: ALL MATERIALS AND COLORS SUBJECT TO CHANGE DUE TO AVAILABILITY.(WITH STAFF APPROVAL) ALTERNATE MATERIALS TO REMAIN IN SIMILAR COLOR PALETTE EXPOSED FACE BRICK, STONE & MORTAR JOINTS ARE TO RECEIVE A CLEAR WATER REPELLENT COATING. REFER TO SPECIFICATIONS. BRICK (SUBJECT TO OWNER APPROVAL) (FULL DEPTH)	
BR-1: ELGIN BULTER PRODUCTS FOR CREATIVE ARCHITECTURE GLAZED BRICK / COLOR: # 7100 POLAR WHITE / KING BRICK	
BR-2: ENDICOTT CLAY PRODUCT MANGANESE IRONSPOT / TEXTURE: VELOUR / SIZE: KING	
<b>PREFINISHED METALS</b>	
PM-1: BERRIDGE MANUF. COMPANY, COLOR: PREWEATHERED GALVALUME	<b>ALUMINUM STOREFRONT</b> AS-1: BLACK ANODIZED
<b>PAINT / TEXTURE COAT / STUCCO</b>	
P-1, S-1 BENJAMIN MOORE CLASSIC COLOR: WHITE DOVE FINISH: SMOOTH ON TOWER ELEMENT (SUBMIT FOR APPROVAL)	<b>ARCHITECTURAL PANELS</b> AP-1: FIBER CEMENT SIDING PRODUCTS NICHIIA ILLUMINATION DESIGNER SERIES AW3030 /COLOR TO MATCH P-1 / PANEL ORIENTATION: HORIZONTAL / FINISH: SATIN / SMOOTH
P-2, S-2 BENJAMIN MOORE COLOR: PREVIEW : 2121-20 STEEL WOOL	AP-1: FIBER CEMENT SIDING PRODUCTS NICHIIA ILLUMINATION DESIGNER (ALT.): SERIES AW1818 / COTTON / PANEL ORIENTATION: HORIZONTAL / FINISH: SATIN / SMOOTH
P-3, S-3 SHERWIN WILLIAMS SW7069 IRON ORE FINISH: FINE SAND (SUBMIT FOR APPROVAL)	AP-2: KNOTWOOD POWDER COATED ON BERRIDGE METAL SOFFIT / FINISH: WHITE ASH
<b>METAL COPING</b>	
MC-1: BERRIDGE MANUF. COMPANY, COLOR: PREWEATHERED GALVALUME	
<b>METAL AWNING</b>	
MA-1: BERRIDGE MANUF. COMPANY, COLOR: PREWEATHERED GALVALUME	



KEY PLAN



LOCATION PLAN



# VICTORY SHOPS AT COPPELL, COPPELL, TEXAS

LOT 2 - RETAIL S 20079-02

SHEET-2

NOTE: ELEVATION RENDERING CONCEPTUAL STUDY IS PROVIDED TO RELAY DESIGN CONCEPT, VERTICAL/ HORIZONTAL ARTICULATION, AND MATERIAL DELINEATION.  
MATERIALS AND DETAIL SUBJECT TO CHANGE DURING DESIGN DEVELOPMENT.GENERAL DESIGN TO REMAIN IN SIMILAR CONTEXT AND COLOR PALLETTE.  
PLANTING AND ENTOURAGE ADDED FOR ARTISTIC PURPOSES ONLY.

SIGNS ARE FOR ILLUSTRATIVE PURPOSES ONLY, BUILDING SIGNS WILL COMPLY WITH CITY ORDINANCES

08/11/25