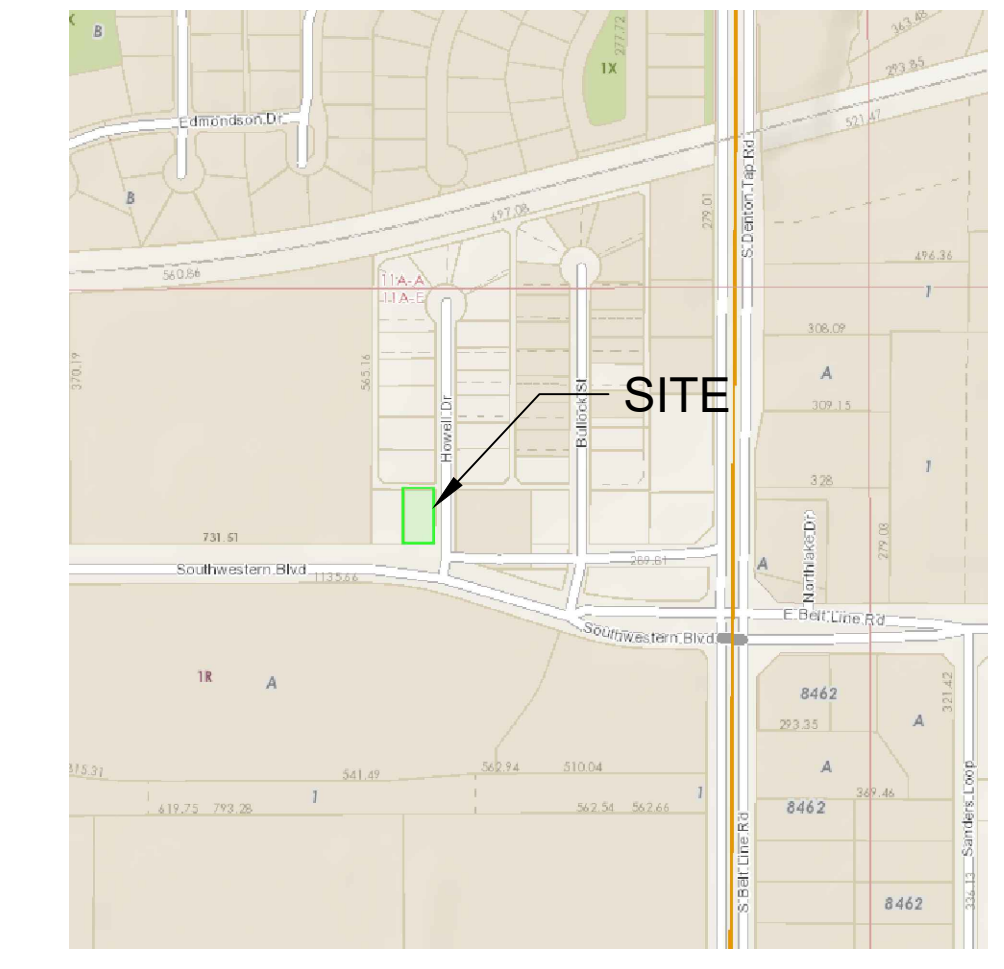


PLANT MATERIAL LIST SUMMARY CHART

SYM	QNTY	COMMON NAME	BOTANICAL NAME	SIZE
TREES				
3		BIG TOOTH MAPLE	<i>Acer grandidentatum</i>	3" CAL.; 12' MIN HT; 30 GAL MIN. CONT.
3		LACEBARK ELM	<i>Ulmus parvifolia</i>	3" CAL.; 12' MIN HT; 30 GAL MIN. CONT.
2		CHINQUAPIN OAK	<i>Quercus muhlenbergii</i>	3" CAL.; 12' MIN HT; 30 GAL MIN. CONT.
4		CHINESE PISTACHE	<i>Pistacia chinensis</i>	3" CAL.; 12' MIN HT; 30 GAL MIN. CONT.
9		SOUTHERN WAX MYRTLE	<i>Myrica cerifera</i>	2" CAL.; 12' MIN HT; 30 GAL MIN. CONT.
SHRUBS				
19		GREEN CLOUD SAGE	<i>Ilex vomitoria 'Nana'</i>	2' HGT; 5 GALLON CONT.; 3' O.C.
32		SUNSHINE LIGUSTRUM	<i>Ligustrum sinense 'Sunshine'</i>	2' HGT; 5 GALLON CONT.; 3' O.C.
43		TEXAS SEDGE	<i>Carex texensis</i>	12" HGT; 1 GALLON CONT.; 3' O.C.
29		BLUE RUG JUNIPER	<i>Juniperus horizontalis</i>	8" HGT; 1 GALLON CONT.; 3' O.C.
18		SPREADING JAPANESE YEW	<i>Taxus cuspidata</i>	8" HGT; 1 GALLON CONT.; 3' O.C.
GROUNDCOVER/TURF GRASS				
4580		COMMON BERMUDA	<i>Cynodon dactylon</i>	SOD; SF
612		BLACK RIVER ROCK	1-2"	2 INCH DEPTH; CY



LANDSCAPE DATA TABLE		
Existing Zoning	C	
Proposed Use	BUSINESS OFFICE	
Lot Area (square feet)	10,048 SF	
Interior Landscaping	REQUIRED	PROVIDED
10% of paving area	330	3300
One Tree per 400 SF	2	4
One 150 SF planting island at the end of each single row of parking with overstory tree required	2	2
Perimeter Landscaping (Landscape Buffers)		
Howell Drive (EAST)	15 FT	15 FT
Southwestern Boulevard (SOUTH)	15 FT	70 FT
Adjacent property (WEST)	10 FT	10 FT
Alley (NORTH)	10 FT	Screening provided by fence
Overstory trees - 1 per 50 LF (418 total LF)	9 Trees	10 Trees
Nonvehicular Open Space		
Min 15% of lot area not covered by building (10,048-1,800=8,248 x .15)	1,237 SF	2,214 SF
50% of nonvehicular open space to be in front yard	619	1350
1 Tree/4,000 SF of Open Space Area	2	2
Overall Landscape Area		
Min 30% of lot area to be landscape area	3,015 SF	3,652 SF (36%)
TOTAL TREES	15	15

PD CONDITIONS:

- To allow for reduced setbacks as listed: - 20-ft from Southwestern Blvd (southern property line) - 15-ft off Howell Dr. (eastern property line) - 0-ft off the alley (northern property line) - 10 -ft off the western property line
- To allow Landscaping as shown
- Allow parking as shown

LANDSCAPE NOTES:

- Provide an automatic irrigation system as required by city ordinance
- No existing trees on site therefore no mitigation or tree protection is required
- No trees to be planted under existing power lines; trees to be planted a minimum of 12 feet in either direction of power lines.

LANDSCAPE DATA TABLE

EXISTING & PROPOSED:

TREES

- 9 REQUIRED
- 9 PROVIDED (7 SMALL CANOPY TREES & 6 LARGE)

INTERIOR LANDSCAPING

- 330 SF REQUIRED
- 431 SF PROVIDED
- TREES
- 2 REQUIRED
- 0 PROVIDED

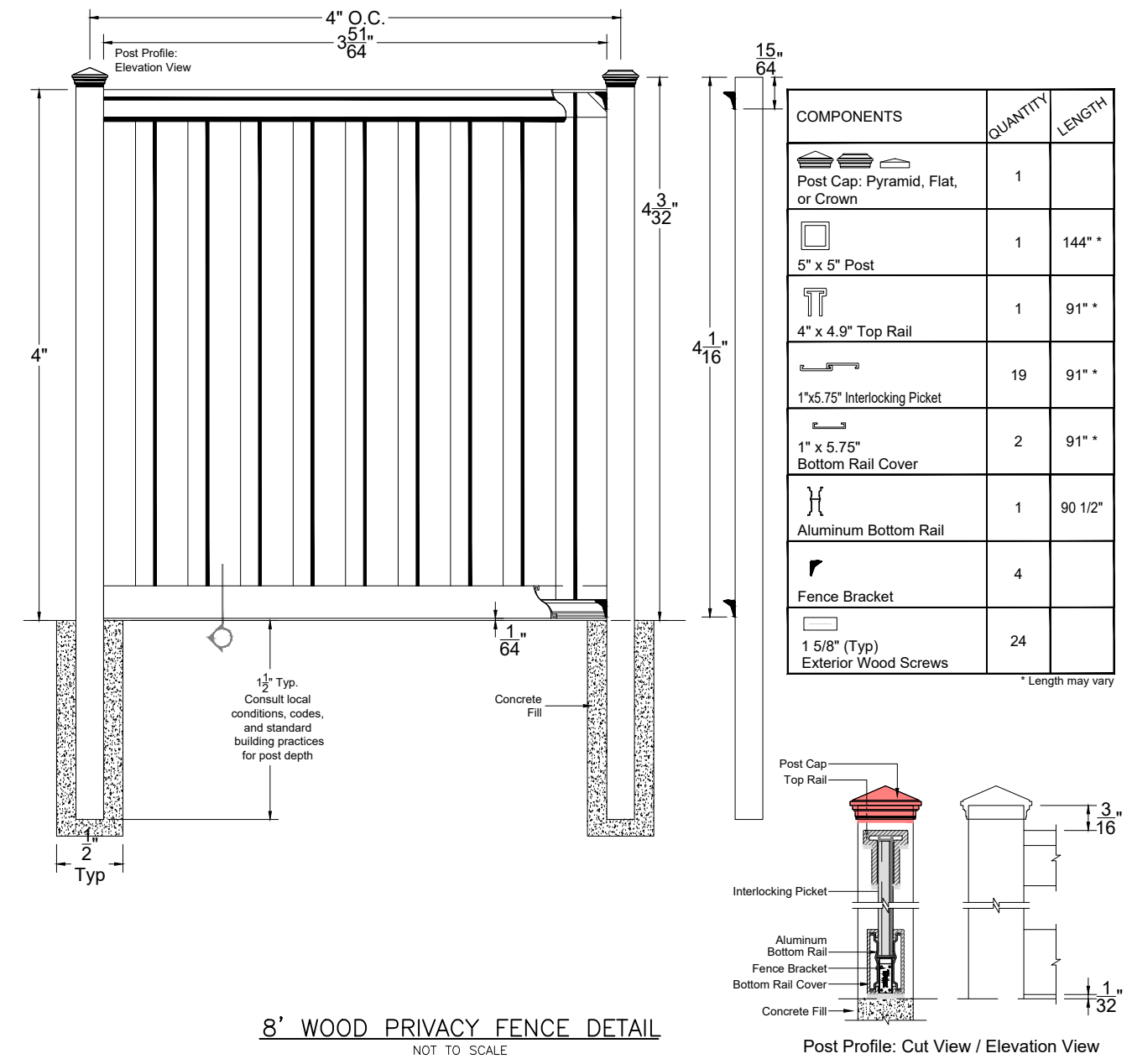
NON-VEHICULAR LANDSCAPING

- 1,237 SF REQUIRED
- 298 SF PROVIDED
- TREES
- 2 REQUIRED
- 0 PROVIDED

PERCENTAGE OF SITE AREA DEVOTED TO LANDSCAPING: 36%

AREA OF ROW DEVOTED TO LANDSCAPING: 2,033 SF

ADDITIONAL TREES MAY BE PLANTED ONCE THE UNDERGROUND LINE HAS BEEN ABANDONED



OWNER/DEVELOPER:

GRAYSTONE CONSTRUCTION, LLC

CONTACT: DANNY DIDYK

1300 POWDER RIVER TRL

SOUTH LAKE, TX 76092

TEL: 214-761-3461

EMAIL: danny@graystoneconstruction.com



CIVIL ENGINEERING DESIGN & CONSULTING

(Tex. Reg. No. F-456)

4144 N. CENTRAL EXPWY, SUITE 340

DALLAS, TEXAS 75248

TEL 214-373-1180

daytonm@macatee-engineering.com



192 Southwestern PERMIT SET

192 Southwestern COPPELL, TX 75231