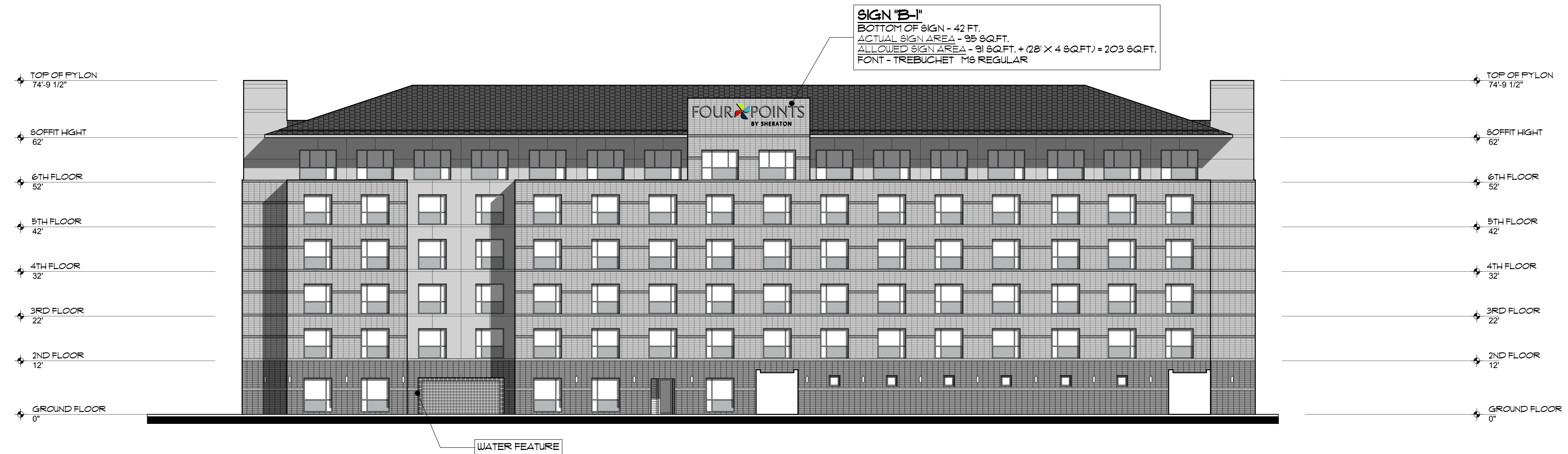


SIGN "B-1"
 BOTTOM OF SIGN - 42 FT.
 ACTUAL SIGN AREA - 95 SQ.FT.
 ALLOWED SIGN AREA - 91 SQ.FT. + (28' X 4 SQ.FT.) = 203 SQ.FT.
 FONT - TREBUCHET 116 REGULAR

SIGN "A-1"
 BOTTOM OF SIGN - 27 FT.
 ACTUAL SIGN AREA - 101 SQ.FT.
 ALLOWED SIGN AREA - 138 SQ.FT.

1 WEST ELEVATION
 SCALE: 1/16" = 1'-0"

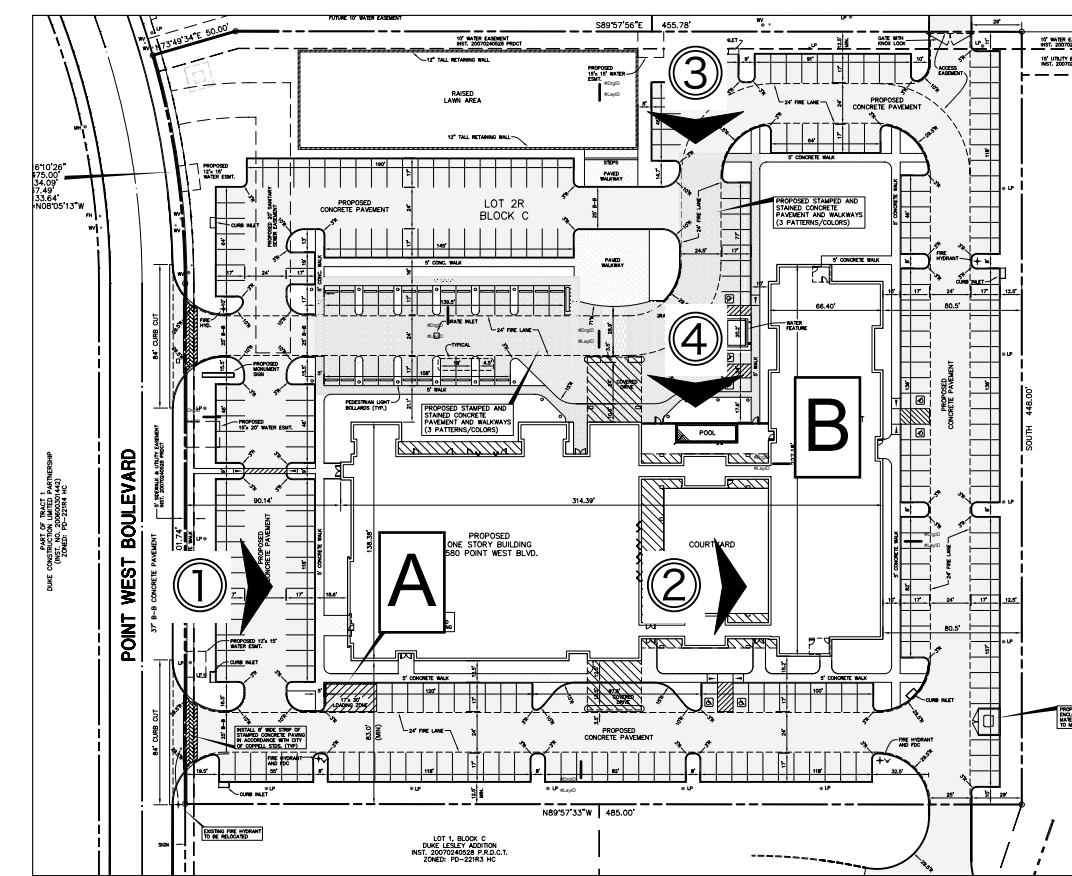


SIGN "B-1"
 BOTTOM OF SIGN - 42 FT.
 ACTUAL SIGN AREA - 95 SQ.FT.
 ALLOWED SIGN AREA - 91 SQ.FT. + (28' X 4 SQ.FT.) = 203 SQ.FT.
 FONT - TREBUCHET 116 REGULAR

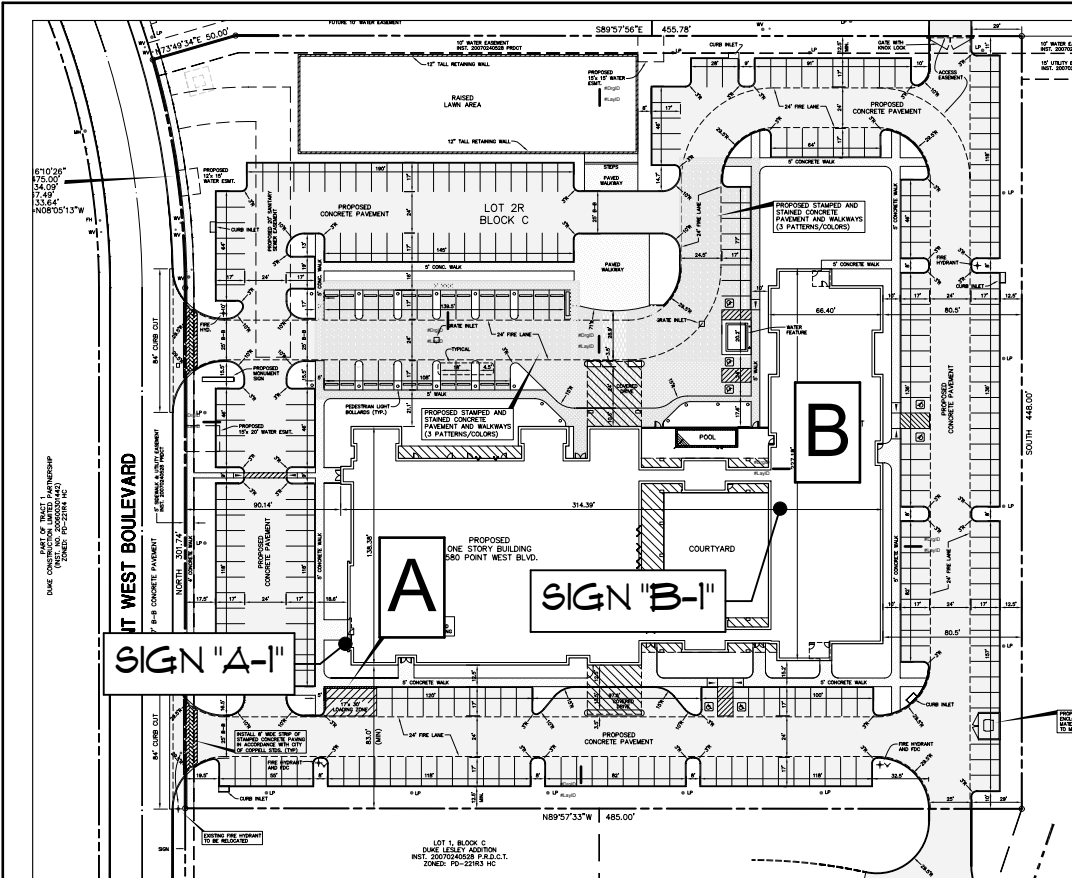
2 WEST ELEVATION
 SCALE: 1/16" = 1'-0"



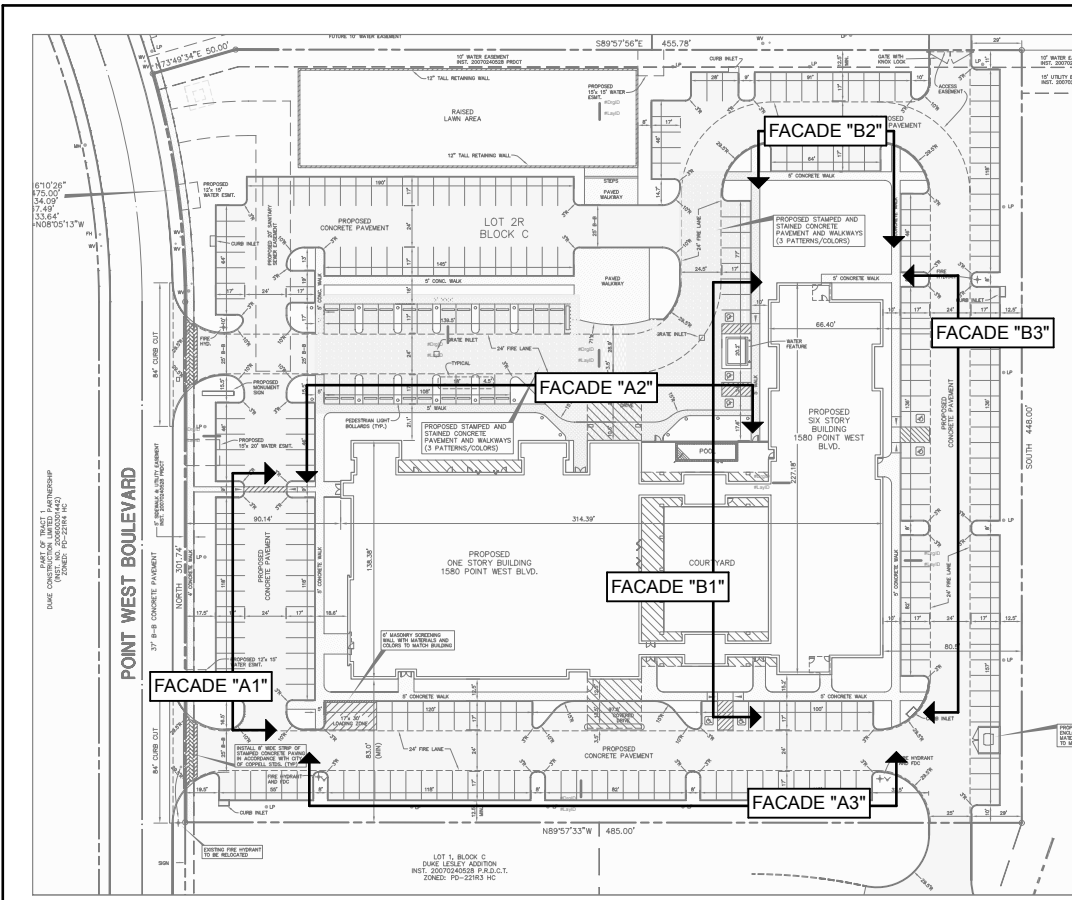
3 NORTH ELEVATION
 SCALE: 1/16" = 1'-0"



BUILDING ELEVATION KEY PLAN



BUILDING SIGN KEY PLAN
 NOTE: ALL BUILDING SIGNS ARE INTERNALLY ILLUMINATED CHANNEL LETTERS

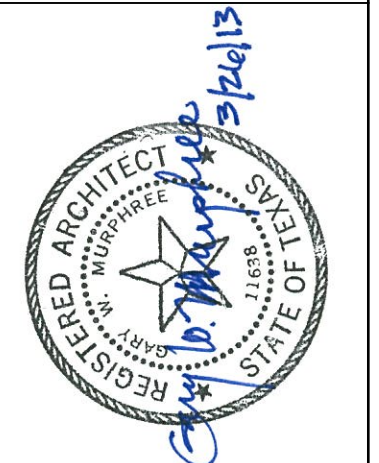


FACADE MASONRY PERCENTAGE KEY PLAN

PERCENTAGE OF FACADE MASONRY

FACADE	MASONRY	GLAZING
FACADE "A1"	MASONRY - 80.0%	GLAZING - 1.6%
FACADE "A2"	MASONRY - 96.0%	GLAZING - 21.0%
FACADE "A3"	MASONRY - 98.4%	GLAZING - 7.2%
FACADE "B1"	MASONRY - 98.3%	GLAZING - 26.2%
FACADE "B2"	MASONRY - 100.0%	GLAZING - 0.0%
FACADE "B3"	MASONRY - 99.8%	GLAZING - 32.6%

NOTE:
 1 - CONSTRUCTION OF ALL STRUCTURES WILL BE UNDERTAKEN AT THE SAME TIME.



ALL IDEAS, DESIGNS, ARRANGEMENTS AND PLANS INDICATED OR REPRESENTED BY THIS DRAWING ARE OWNED BY AND THE PROPERTY OF ONE GROUP DESIGN, L.P. AND WERE CREATED, EVOLVED, AND DEVELOPED FOR USE ON AND IN CONNECTION WITH THE SPECIFIED PROJECT. NONE OF THE IDEAS, DESIGNS, ARRANGEMENTS OR PLANS SHALL BE USED BY OR DISCLOSED TO ANY PERSON, FIRM OR CORPORATION FOR ANY PURPOSE WHATSOEVER WITHOUT THE WRITTEN PERMISSION OF ONE GROUP DESIGN, L.P. VIOLATION OF THIS NOTICE IS A CRIMINAL OFFENSE UNDER U.S.C. SEC. 806 UNAUTHORIZED DISCLOSURE MAY CONSTITUTE TRADE SECRET VIOLATION. REPRODUCTION IN VIOLATION OF 17 U.S.C. 101-104 AND OTHER LAWS. THE IDEAS, ARRANGEMENTS AND DESIGNS DISCLOSED HEREIN MAY BE PATENTED OR BE THE SUBJECT OF PENDING PATENT APPLICATION.

PROJECT NUMBER: COP 333
 COPPELL CONFERENCE CENTER AND HOTEL COMPLEX
 LOT 2 BLOCK C, DIVIDEND DRIVE & FORT WEST BOULEVARD, COPPELL, TEXAS, 75019

ISSUE DATE	REVISIONS
11/2/2012	

DESIGN DEVELOPMENT - 01
 BUILDING ELEVATIONS

SHEET No:



ALL IDEAS, DESIGNS, ARRANGEMENTS AND PLANS INDICATED OR REPRESENTED BY THIS DRAWING ARE OWNED BY AND THE PROPERTY OF ONE GROUP DESIGN L.P. AND WERE CREATED, EVOLVED AND DEVELOPED FOR USE ON AND IN CONNECTION WITH THE SPECIFIED PROJECT. NONE OF THE IDEAS, DESIGNS, ARRANGEMENTS OR PLANS SHALL BE USED BY OR DISCLOSED TO ANY PERSON, FIRM OR CORPORATION FOR ANY PURPOSE WHATSOEVER WITHOUT THE WRITTEN PERMISSION OF ONE GROUP DESIGN L.P. UNLESS REPRODUCTION HEREOF IS A CRIMINAL OFFENSE UNDER U.S.C. SEC. 806 UNAUTHORIZED DISCLOSURE MAY CONSTITUTE TRADE SECRET VIOLATION. REPRODUCTION IN VIOLATION OF 1624-2311 ET SEQ. AND OTHER LAWS, THE IDEAS, ARRANGEMENTS AND DESIGNS DISCLOSED HEREIN MAY BE PATENTED OR BE THE SUBJECT OF PENDING PATENT APPLICATION.

PROJECT NUMBER: COP 333
COPPELL CONFERENCE CENTER AND HOTEL COMPLEX
LOT 2 BLOCK C, DIVIDEND DRIVE & POINT WEST BOULEVARD, COPPELL, TEXAS, 75019

ISSUE DATE: 11/2/2012
REVISIONS:

DESIGN DEVELOPMENT - 01

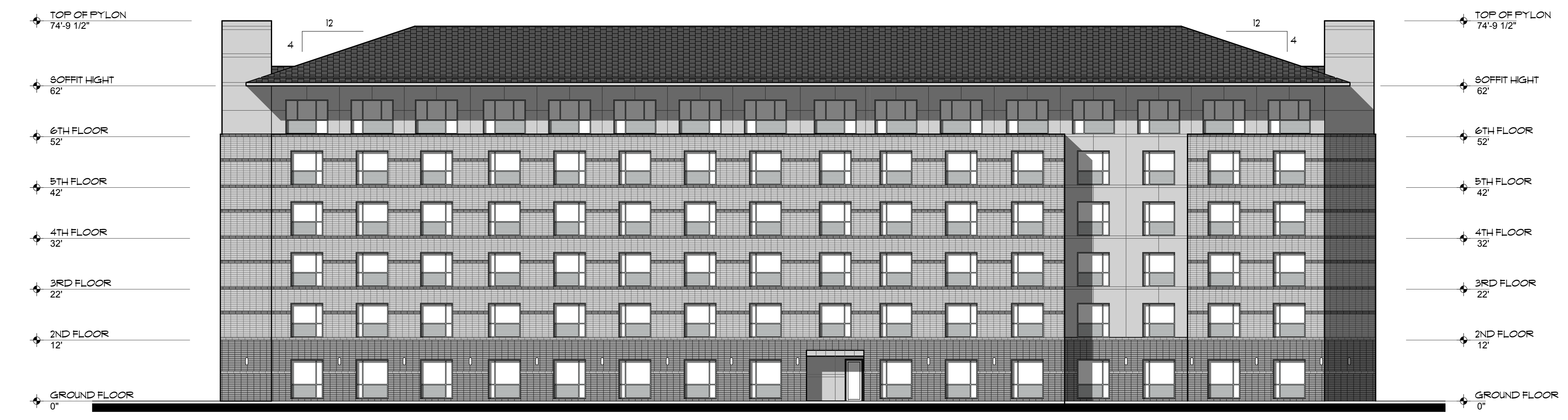
BUILDING ELEVATIONS

SHEET No:

A2

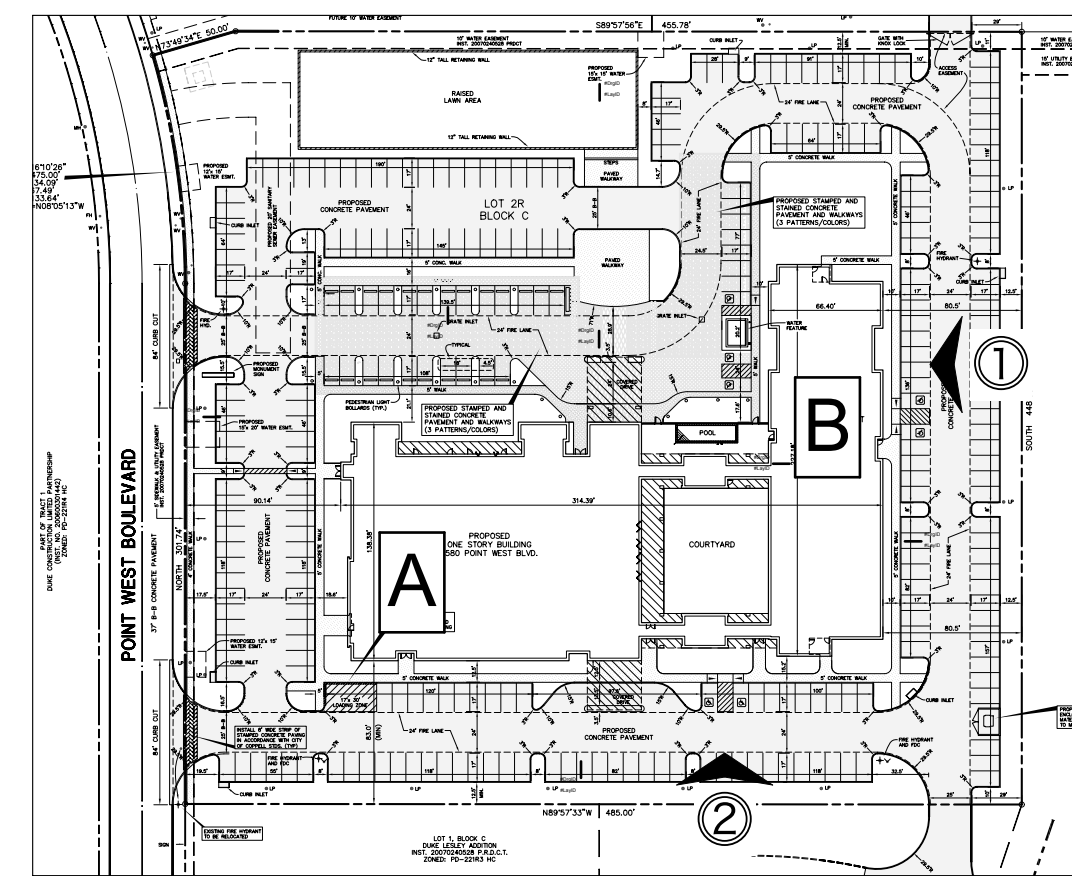


1 SOUTH ELEVATION
SCALE: 1/16" = 1'-0"

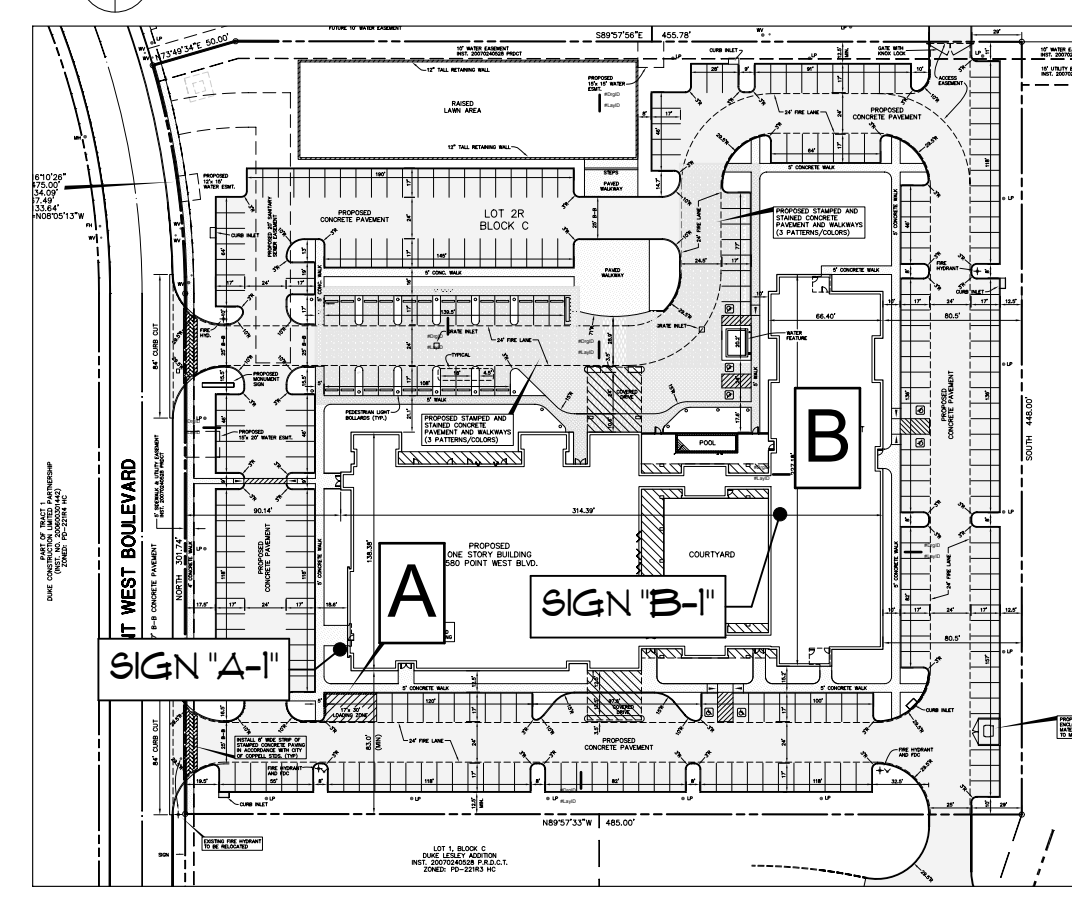


8 EAST ELEVATION
SCALE: 1/16" = 1'-0"

NOTE:
V - CONSTRUCTION OF ALL STRUCTURES WILL BE UNDERTAKEN AT THE SAME TIME.

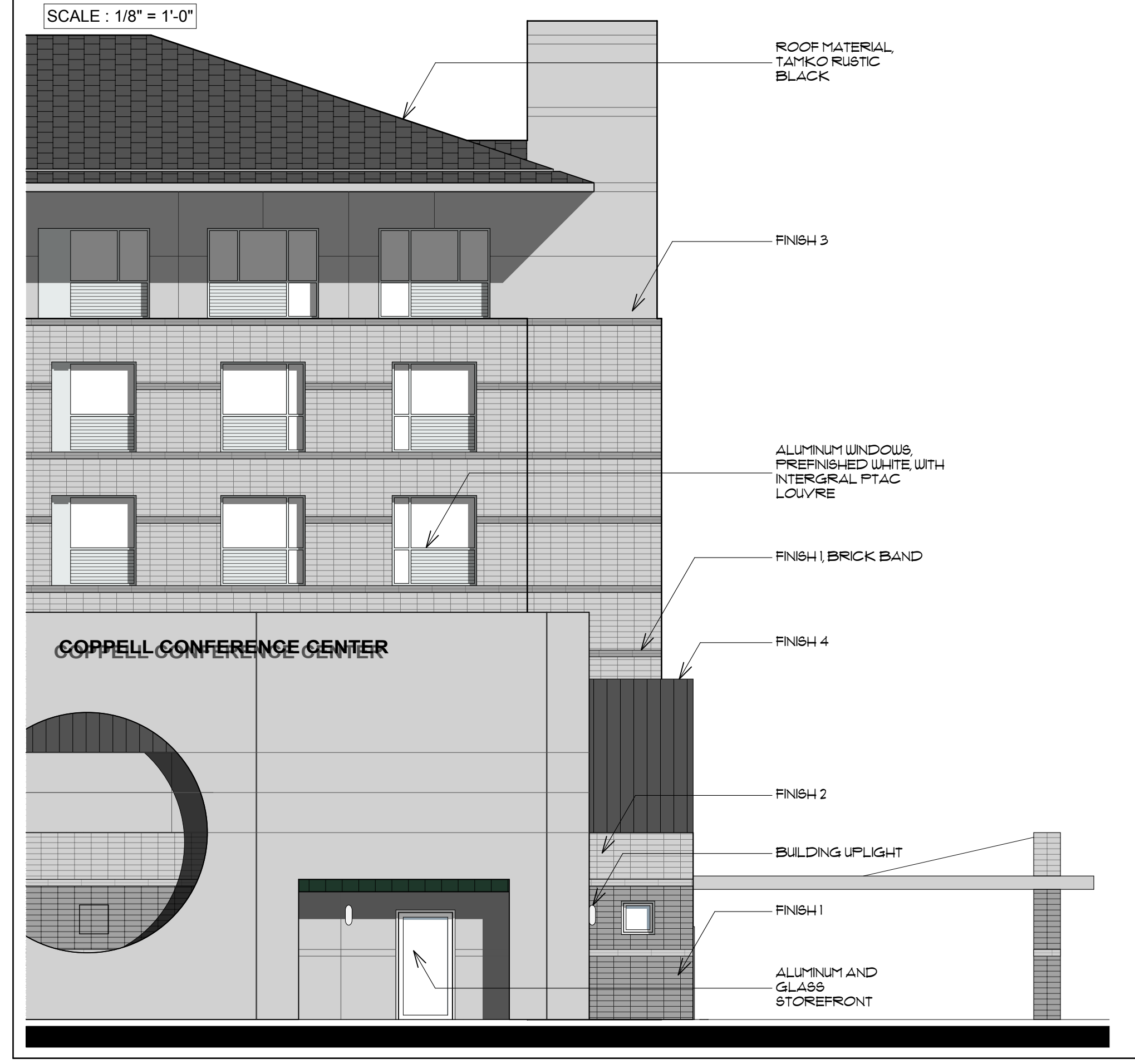


BUILDING ELEVATION KEY PLAN



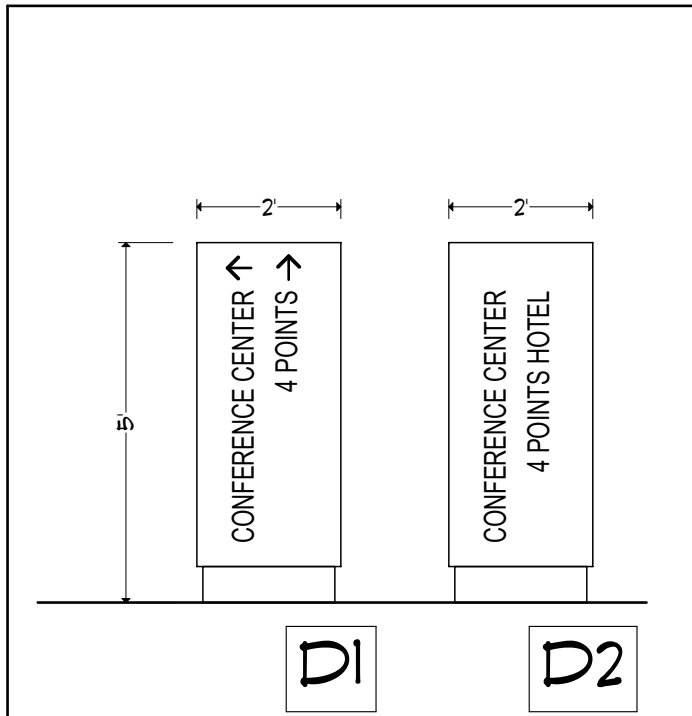
BUILDING SIGN KEY PLAN

FACADE MATERIAL CALL-OUT

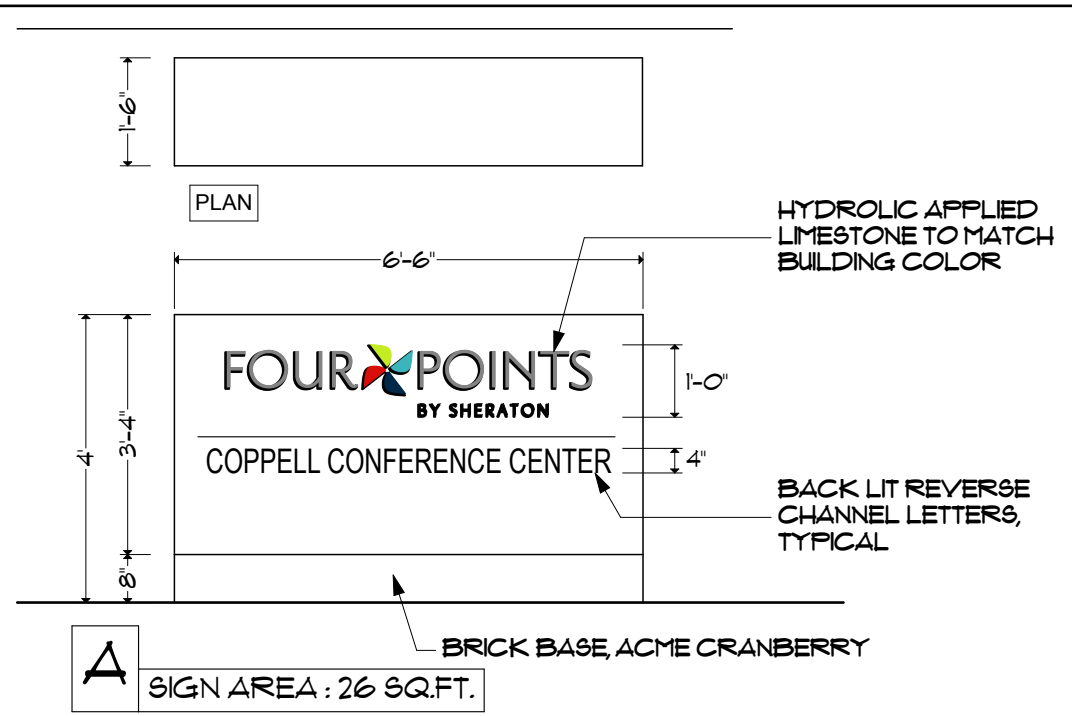


FACADE MATERIAL SCHEDULE

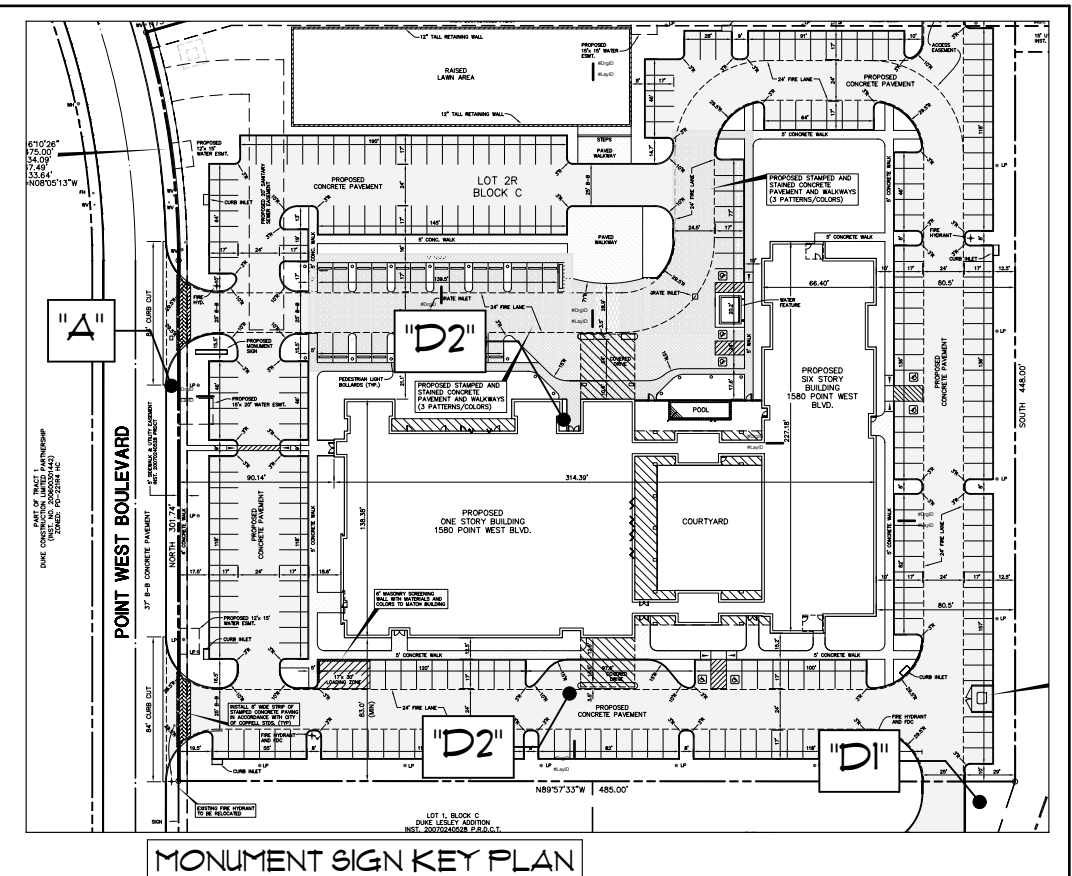
- FINISH 1 - ACME BRICK, COLOR - CRANBERRY
- FINISH 2 - ACME BRICK, COLOR - RIDGEMAR
- FINISH 3 - HYDROLIC APPLIED LIMESTONE, COLOR - TO MATCH ACME BRICK - RIDGEMAR
- FINISH 4 - METAL ROOF, COLOR - TO MATCH ACME BRICK - RIDGEMAR



DIRECTIONAL SIGNS
SCALE: 3/8" = 1'-0"



MONUMENT SIGNS
SCALE: 3/8" = 1'-0"



MONUMENT SIGN KEY PLAN