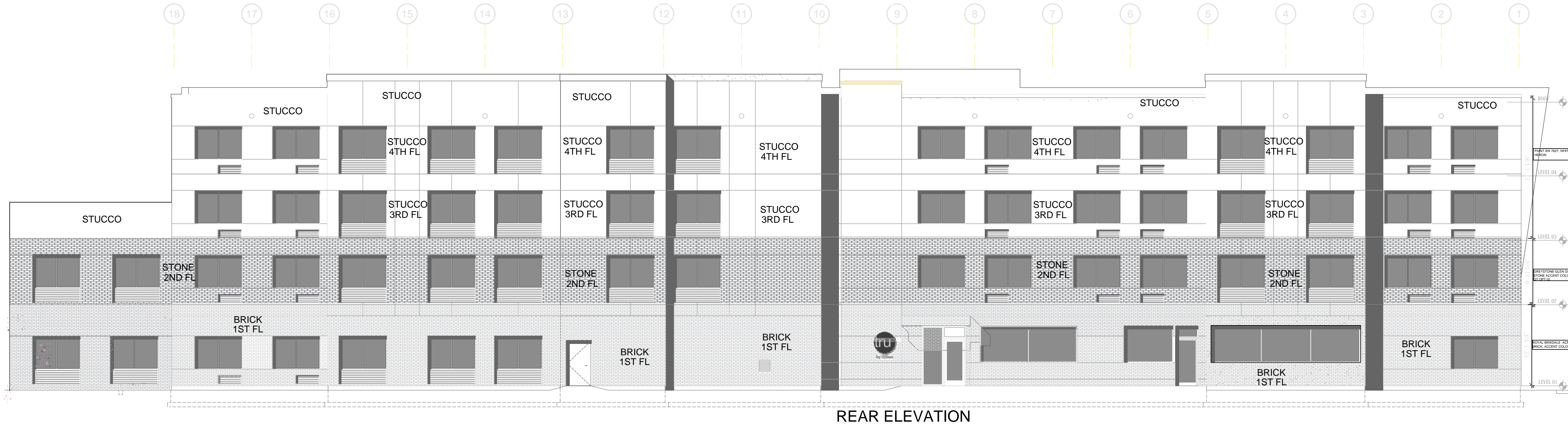
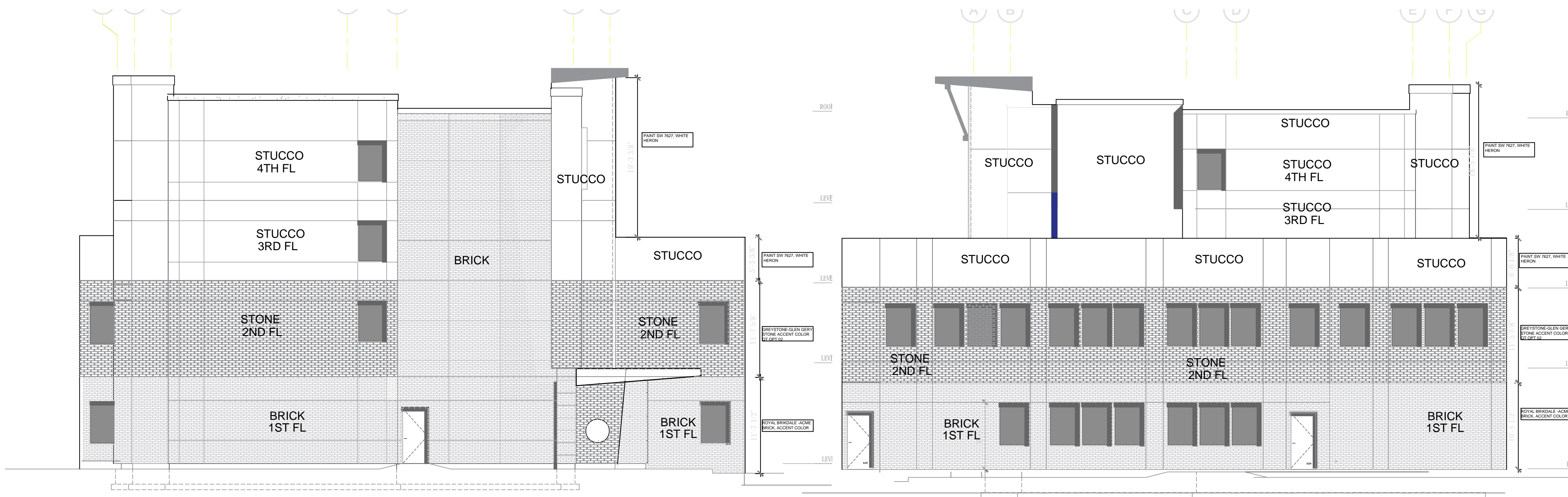


Exhibit E - Elevations & Details



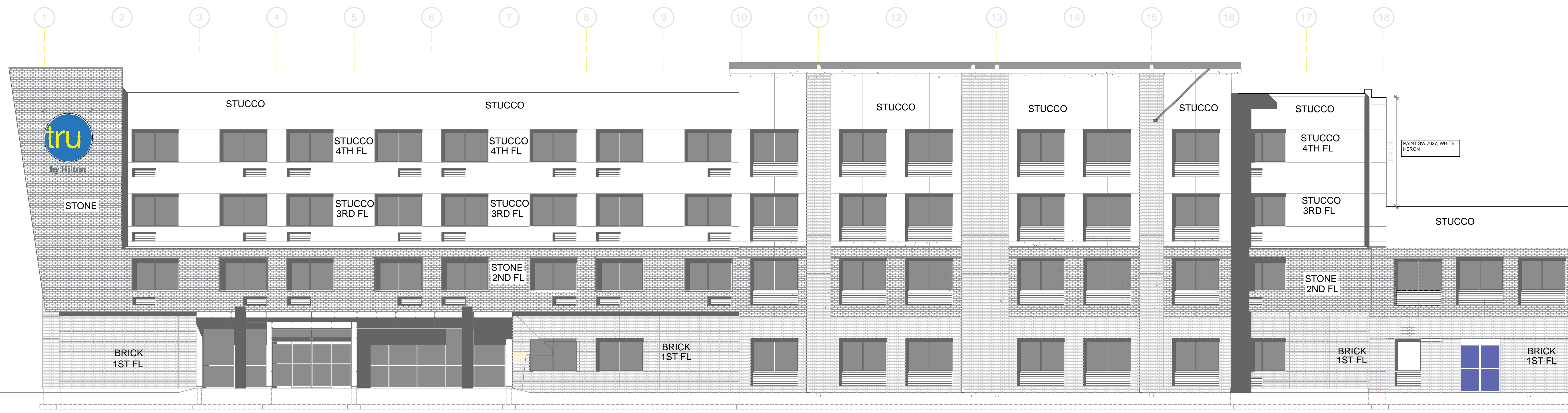
EXTERIOR ELEVATION

1/8" = 1'-0"



EXTERIOR ELEVATION

1/8" = 1'-0"



EXTERIOR ELEVATION

1/8" = 1'-0"

KEY NOTES:

- 1 APPROXIMATE LINE OF GRADE
- 2 ABOVE GRADE EXPOSED FOUNDATION WALL AS REQUIRED PER LOCAL FROST DEPTHS
- 3 CONCRETE FOOTING AND FOUNDATION WALL AS REQUIRED PER LOCAL FROST DEPTHS
- 4 ALUMINUM FRIED WINDOW W/ THERMAL BROKEN FRAME, INSULATED GLAZING WITH INTEGRAL ALUMINUM LOUVER AT FRIED UNITS
- 5 ALUMINUM FRIED WINDOW W/ THERMAL BROKEN FRAME, INSULATED GLAZING
- 6 ALUMINUM STOREFRONT SYSTEM W/ THERMAL BROKEN FRAME AND INSULATED GLAZING
- 7 ALUMINUM PTAC LOUVER - COLOR TO MATCH ADJACENT MATERIAL
- 8 ALUMINUM AUTOMATIC SLIDING ENTRY DOOR W/ INSULATED GLAZING OVERFLOW SCUPPER
- 9
- 10 SIGNAGE - REFER TO TRU BY HILTON EXTERIOR SIGNAGE SPECIFICATIONS
- 11 REVEAL FRESH ALUMINUM COATING/ GRAVEL STOP SYSTEM - COLOR TO MATCH ADJACENT MATERIAL
- 12 REVIEW ALL VIEWS AROUND PROPERTY BEFORE LOCATING ALL ROOF TOP MECHANICAL UNITS - VERIFY ALL EQUIPMENT IS APPROPRIATELY SCREENED
- 13 EXPANSION JOINT @ FLOOR LINE W/ BACKER ROD AND SEALANT BUILDING HEIGHT DIMENSIONS ARE BASED ON WOOD FRAME CONSTRUCTION
- 14
- 15 ACCENT "X" JOINT
- 16 DOWNLIGHT & IN-GROUND UPLIGHT TO ACCENT MULTI-COLORED BUILDING RECESSES
- 17 ELECTRICAL CONDUIT FOR THE BUILDING SIGNS MUST BE ROUTED FROM THE ROOF PARAPET OR CONTAINED WITHIN THE EXTERIOR WALL ASSEMBLY. EXPOSED CONDUIT OR OTHER ELECTRICAL DEVICES WILL NOT BE PERMITTED IN THE ADJACENT STAIRWELL OR CLOSETROOM. PROVIDE TWO (2) ELECTRICAL STUB OUTS, ONE FOR EACH PORTION OF THE REFER TO THE TRU BY HILTON STANDARDS MANUAL FOR SIGN REQUIREMENTS.
- 18 ALUMINUM LOUVER - COLOR TO MATCH ADJACENT WALL MATERIAL

ARCHITECTURAL LIGHTING LEGEND:

- L-19 DOWNLIGHT @ FACADE RECESSES
- L-20 IN-GROUND UPLIGHT @ FACADE RECESSES

BUILDING SIGNAGE:

- ALL SIGNAGE SHOWN FOR ILLUSTRATIVE PURPOSES ONLY - LOCATION, SIZE, ETC. TO BE DETERMINED ON AN INDIVIDUAL PROJECT BASIS
- MINIMUM 3/4" PLYWOOD BACKER BOARD REQUIRED AT SIGN LOCATIONS. AREA SHOULD COVER ENTIRE LENGTH AND HEIGHT OF BRACK OR SPACE AVAILABLE FOR SIGN
- ELECTRICAL AND FINAL CONSTRUCTION BY CONTRACTOR - ELECTRICAL REQUIREMENTS MAY BE OBTAINED FROM SIGN COMPANY - TYPICAL 120V REQUIREMENT
- RACEWAYS: WIREWAYS ARE NOT ALLOWED
- PERMANENT ACCESS DOORS TO INTERIOR OF ALL PARAPETS WHERE SIGNS ARE LOCATED TO BE PROVIDED BY CONTRACTOR - CONTRACTOR TO FINISH AND CONNECT PRIMARY ELECTRICAL SERVICE INSIDE PARAPET WALL
- CLOSETROOMS OR PUBLIC SPACES WITH SIGNAGE ON EXTERIOR WALLS MUST HAVE ELECTRICAL PENETRATIONS AND/OR INSTALLED PRIOR TO CLOSING UP THE WALL - PENETRATION LAYOUT MAY BE OBTAINED FROM SIGN COMPANY

FINISH LEGEND:

- DRY CLADDING SYSTEM (EX - BASIS OF DESIGN) 103 142 494 K3133 CAS/STGE 0587M-FR2618A2407
- PROVIDE EPS HIGH IMPACT MESH ASSEMBLY FOR LOUVER 182 C K 909070234 F 380 0562C 182G B 182M H1 TO EXTERIOR AND C28 12504F 4832N <<< A18271 MESH
- COORDINATE FOR MINIMUM EXTERIOR CONTIGUOUS INSULATION THICKNESS: R-VALUE REQUIREMENTS IN ACCORDANCE WITH ADOPTED ENERGY CODE REQUIREMENTS FOR ALL CLADDING AREAS.
- DRIVE SYSTEMS: TRUI 02 1035 - PANTONE 7C BLACK
- DRIVE SYSTEMS: TRUI 01 2740 - DRIVE #4138 OVERCAST
- DRIVE SYSTEMS: TRUI 03 1101 - DRIVE #397 GLACIER
- DRIVE SYSTEMS: FINISH VARIES - REFER TO DIAGRAM 10E
- DRIVE SYSTEMS: TRUI 05 1035 - PANTONE PMS PROCESS C1A
- DRIVE SYSTEMS: DRIVE #101A TATTLETALE
- HIGH PRESSURE LAMINATE PANEL COLOR TO MATCH PANTONE PMS PROCESS C1A
- HIGH PRESSURE LAMINATE PANEL COLOR TO MATCH PANTONE PMS PROCESS YELLOW
- EXTERIOR PAINT: BENJAMIN MOORE 1396 NIGHTFALL/ HIGH GLOSS 148 OR SHERWIN WILLIAMS SW6994 GREENBLACK/ HIGH GLOSS

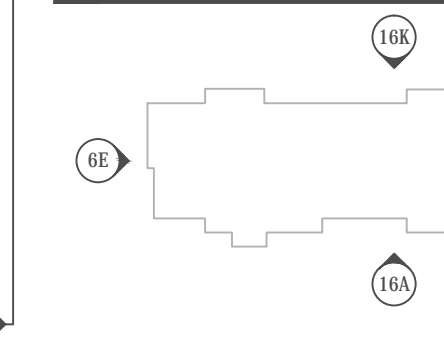
ALERT:

REFER TO ARCHITECTURAL FINISHES AND FINISH SPECIFICATIONS FOR EX - NUMBER COLOR CODING INFORMATION

GENERAL NOTES:

- 1 REFER TO TRU BY HILTON STANDARDS MANUAL ARCHITECTURAL FINISHES AND FINISHES FOR ADDITIONAL INFORMATION REGARDING EXTERIOR MATERIALS, CONSTRUCTION REQUIREMENTS AND SIGNAGE REQUIREMENTS.
- 2 BUILDING HEIGHT DIMENSIONS ARE BASED ON WOOD FRAME CONSTRUCTION. THESE DIMENSIONS WILL VARY BASED ON FINAL BUILDING CONSTRUCTION. INTERIOR CEILING HEIGHTS ARE CRITICAL TO MAINTAIN AS MINIMUMS.

KEY PLAN:



NORTH AMERICA
PROTOTYPE
Version 2.3

DESIGNER AND DEVELOPER:
ALUX CONSTRUCTION & DEVELOPMENT, LLC
2071 NORTH COLLINS BLVD.
SUITE 200, RICHARDSON
TEXAS 75080
TEL: (972) 423 2714
FAX: (972) 423 2483

Original Date:
October 2024
Issue Log:

CITY COMMENTS

OWNER:
Enterprise America
12222 Merit Dr.
Suite 1870
Dallas, TX 75251
Tel: 214-855-6677

PROJECT:
Tru by Hilton-Coppell, TX
456 Freeport Pkwy
Coppell, TX 75006

This document, whether in hard copy or machine readable format, is copyrighted and an instrument of Service to be used for the project for which it was prepared. This document is not intended or authorized for reuse by any party on extensions of such project or any other project. Any reuse, including copying and/or modifying the document, without written permission from the owner for the specific purpose intended is a violation of federal copyright law. Unauthorized use of this material may result in civil and/or criminal penalties.

Dwg Title:
Elevations
Scale:
1'-0"=1/8"
Sheet Number:
A5.01
Project Number:
23-267ND/DFWOP

Exhibit E - Elevations & Details

First floor Extr.

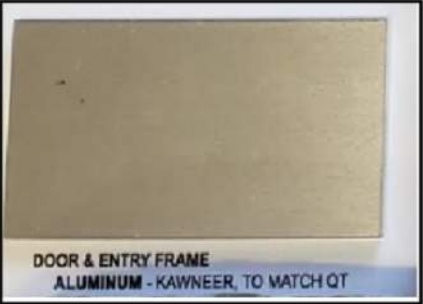


2Nd. Floor Extr

Vaneer Stone
similar to Glen Gery



Aluminum Frames



Stucco / EIFS
Extr



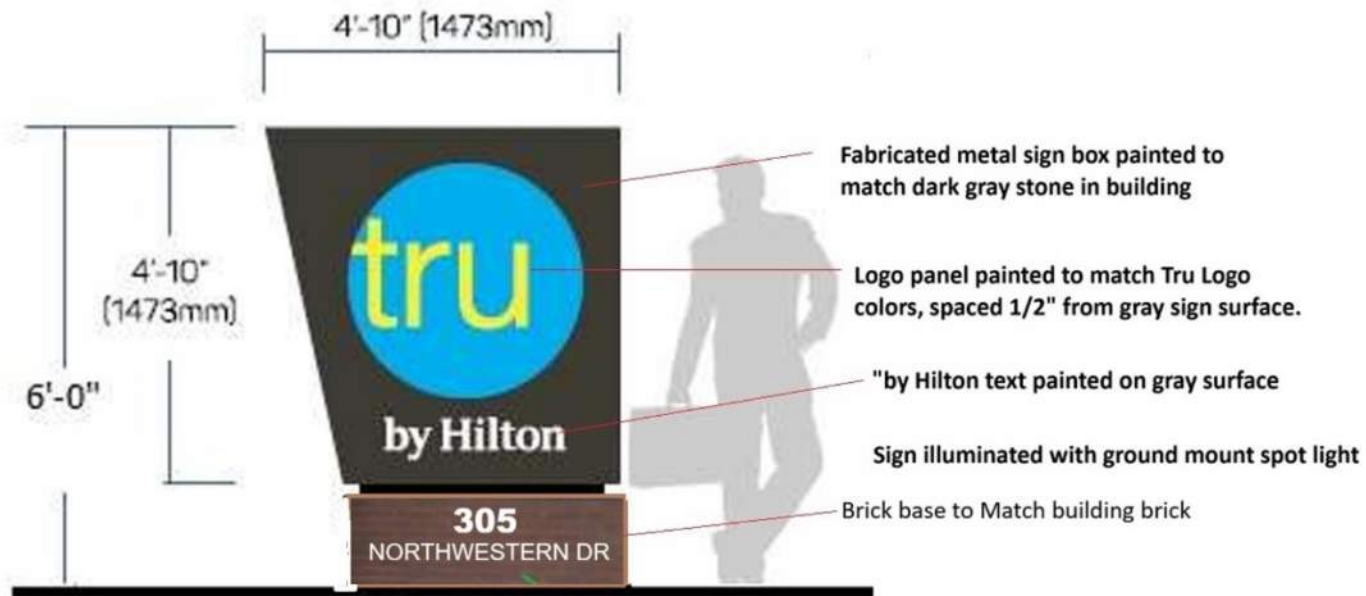
Metal Canopy

Exterior Color Chart

TRU BY HILTON

Coppell, Texas

Exhibit E - Elevations & Details



tru M-23

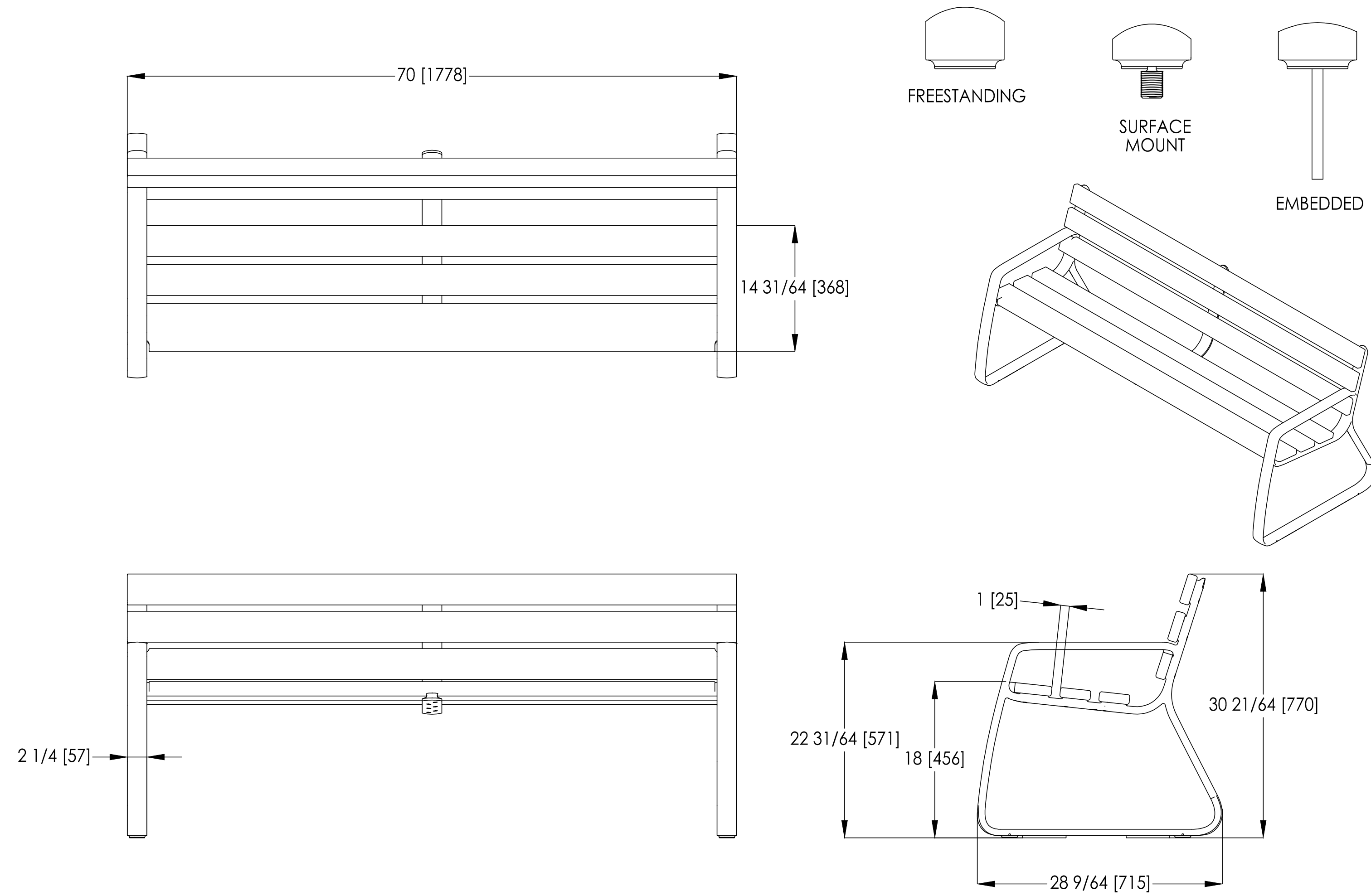
TRU Monument Revised.jpg

Exhibit E - Elevations & Details

FGP Bench, backed, 70in, wood, end arms
Product Drawing

www.landscapeforms.com

Date: 9/5/2019
Ph: 800.521.2546



landscapeforms

Drawing: AG109-01
Dimensions are in inches [mm]
U.S. Patent No. D747,906

CONFIDENTIAL DRAWING INFORMATION CONTAINED HEREIN IS THE PROPERTY OF LANDSCAPE FORMS, INC. INTENDED USE IS LIMITED TO DESIGN PROFESSIONALS SPECIFYING LANDSCAPE FORMS, INC. PRODUCTS AND THEIR DIRECT CLIENTS. DRAWING IS NOT TO BE COPIED OR DISCLOSED TO OTHERS WITHOUT THE CONSENT OF LANDSCAPE FORMS, INC. ©2015 LANDSCAPE FORMS, INC. ALL RIGHTS RESERVED.



No.	REVISION	DATE	APPROV.
6.			
5.			
4.			
3.			
2.			
1.			

<p>Winkelmann & Associates, Inc. CONSULTING CIVIL ENGINEERS ■ SURVEYORS 6750 HILLCREST PLAZA, DRIVEL, SUITE 215 DALLAS, TEXAS 75231 Tel: (972) 498-7999 Fax: (972) 498-7999 www.winkelmann.com</p>	

02

Exhibit E - Elevations & Details



Exhibit E - Elevations & Details



Exhibit E - Elevations & Details



Exhibit E - Elevations & Details

COPYRIGHT



NORTH AMERICA
PROTOTYPE
Version 2.3

DESIGNER AND DEVELOPER:
ALUX CONSTRUCTION &
DEVELOPMENT, LLC

2071 NORTH COLLINS BLVD.
SUITE 200, RICHARDSON
TEXAS 75080
PHONE: (972) 483-2774
FAX: (972) 483-2488

Issue Log:
Original Date:
October 2024

CITY COMMENTS

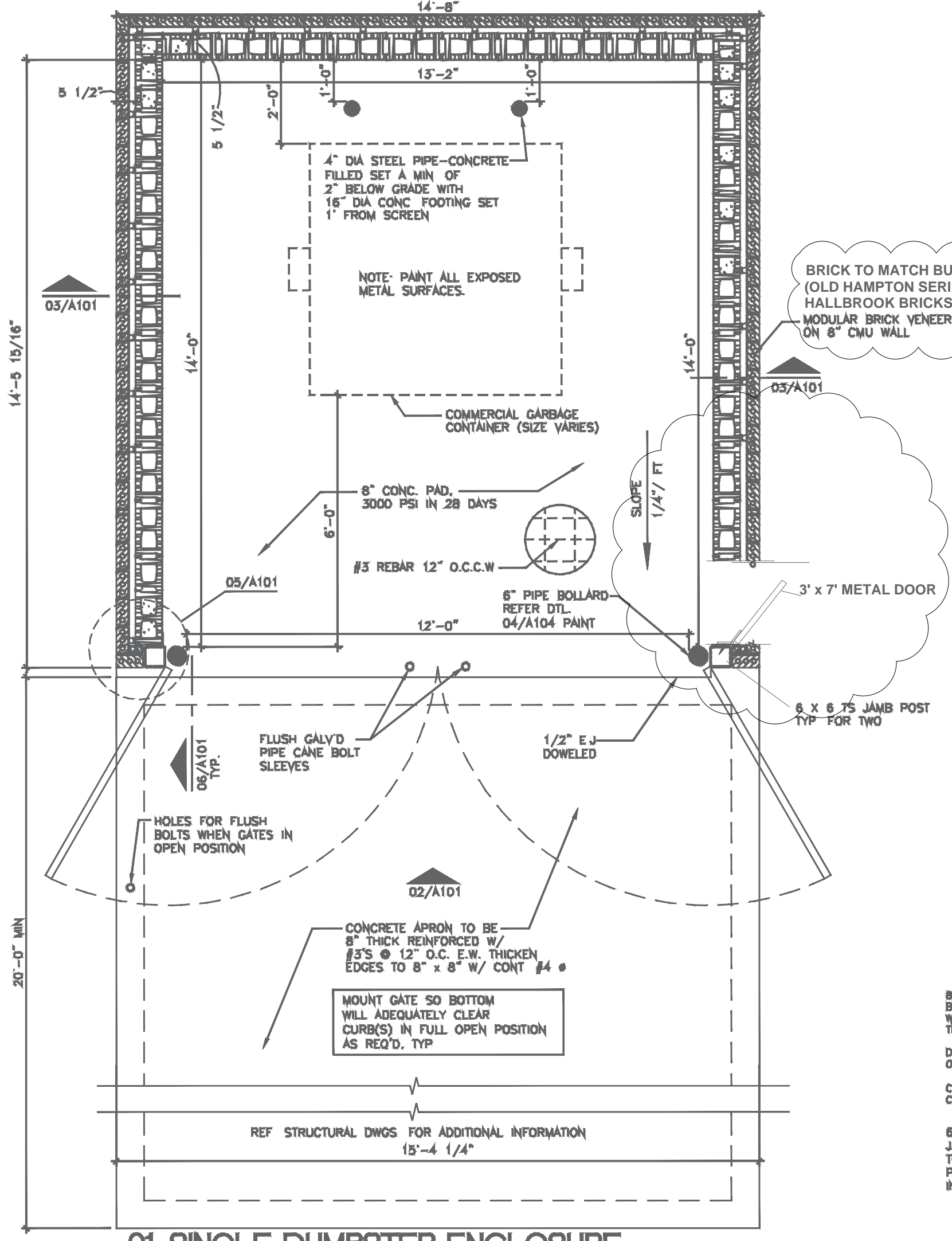
OWNER:
Enterprise America
12222 Meritt Dr.
Suite 1870
Dallas, TX 75251
Tel: 214-855-6677

PROJECT:
Tru by Hilton-Coppell, TX
456 Freepoint Pkwy
Coppell, TX 75006

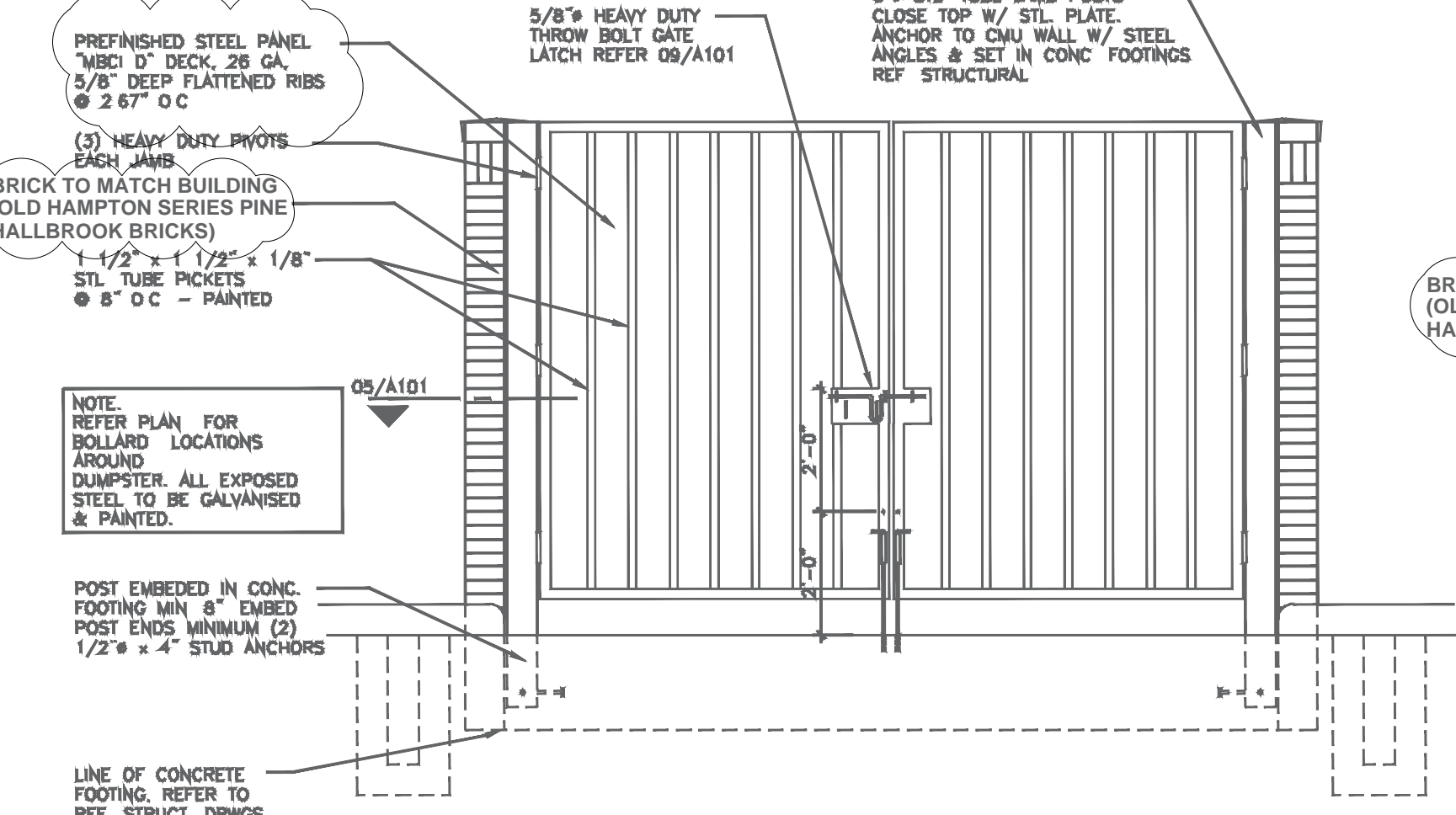
This document, whether in hard copy or machine-readable format, is copyrighted and all trademarks are acknowledged for their use in this document. This document is not to be used for any other project. Any reuse, including copying, modification, distribution, without written permission from the author is prohibited. The author is not responsible for any consequences of the use of this document in any way.

Dwg Title:
Dumpster
Scale:
As Shown
Sheet Number:

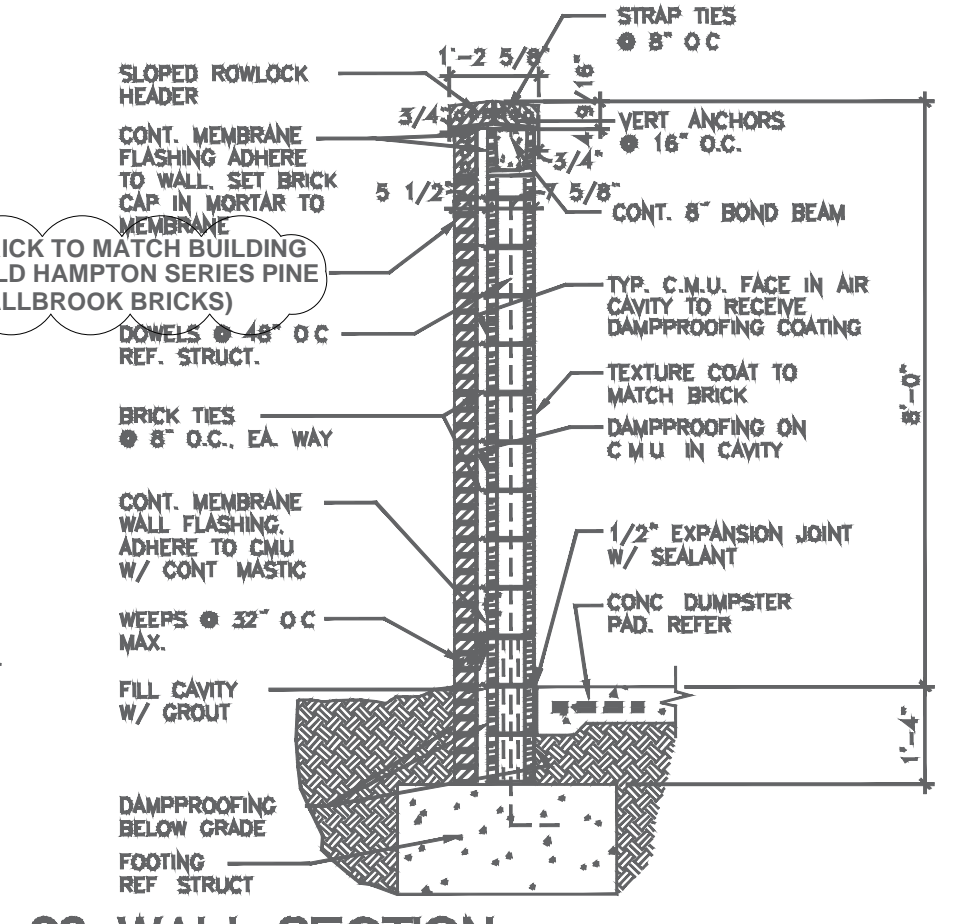
Project Number:
23-267ND/DFWOP



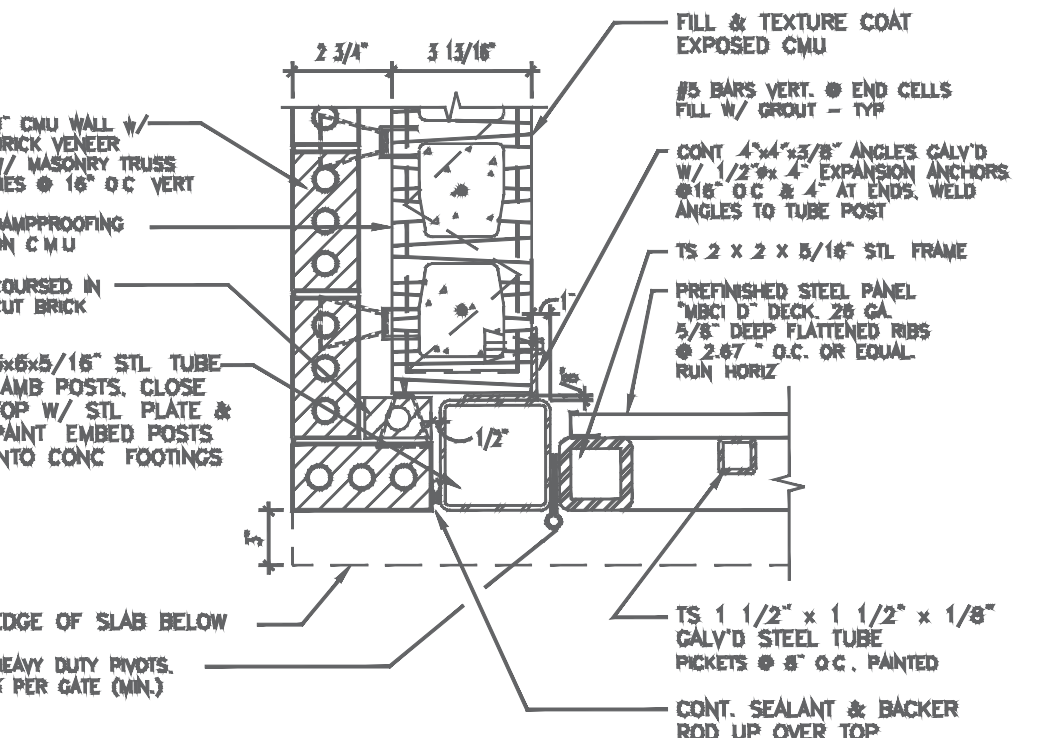
01 SINGLE DUMPSTER ENCLOSURE
SCALE 1/2" = 1'-0"
C:\Projects\Details\Dump-01



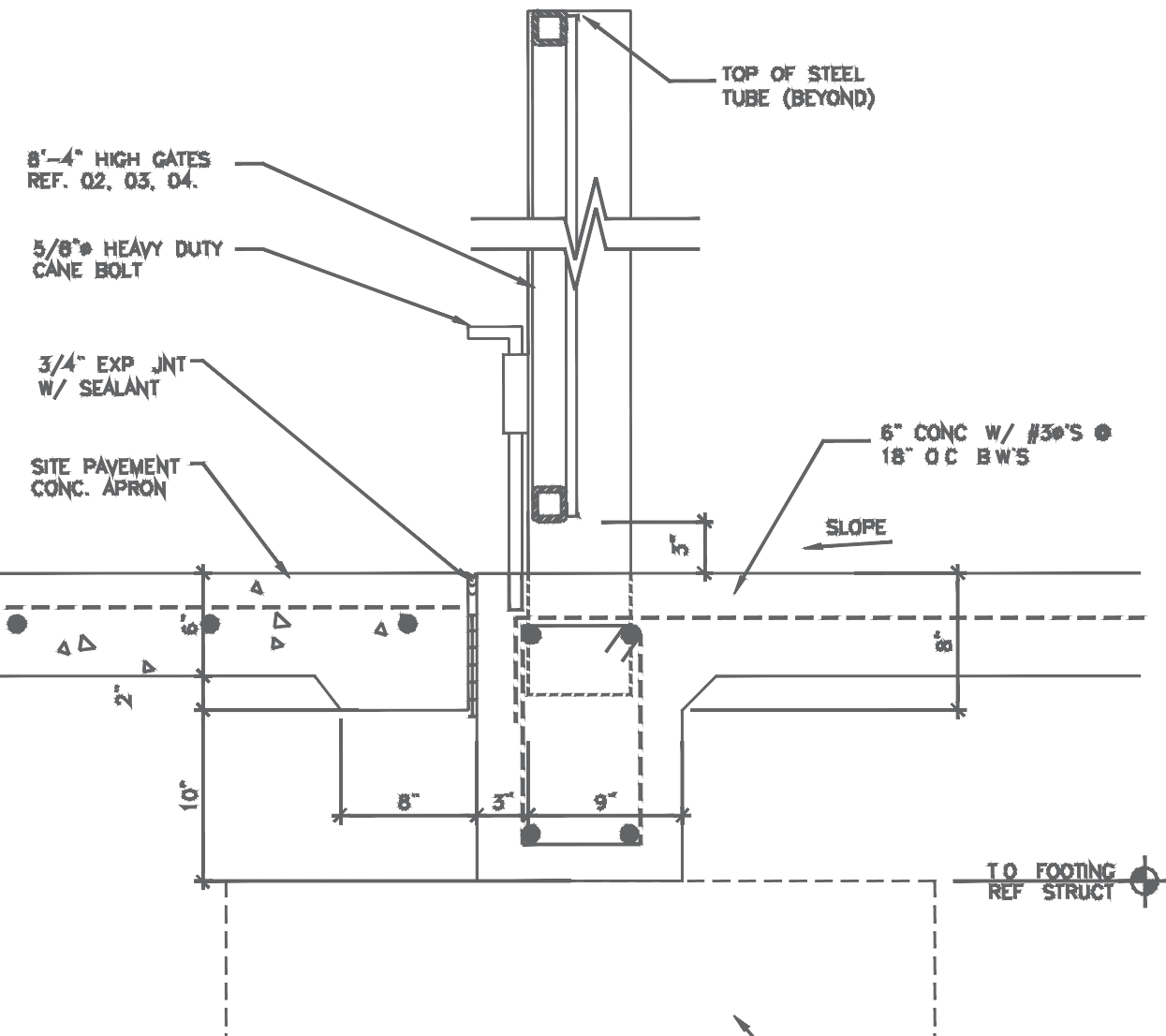
02 GATE ELEVATION
SCALE 1/2" = 1'-0"
C:\Projects\Details\Dump-02



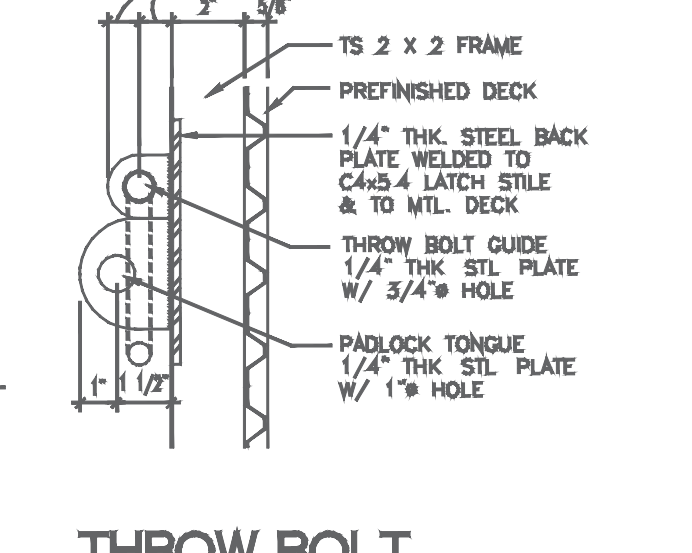
03 WALL SECTION
SCALE 1/2" = 1'-0"
C:\Projects\Details\Dump-03



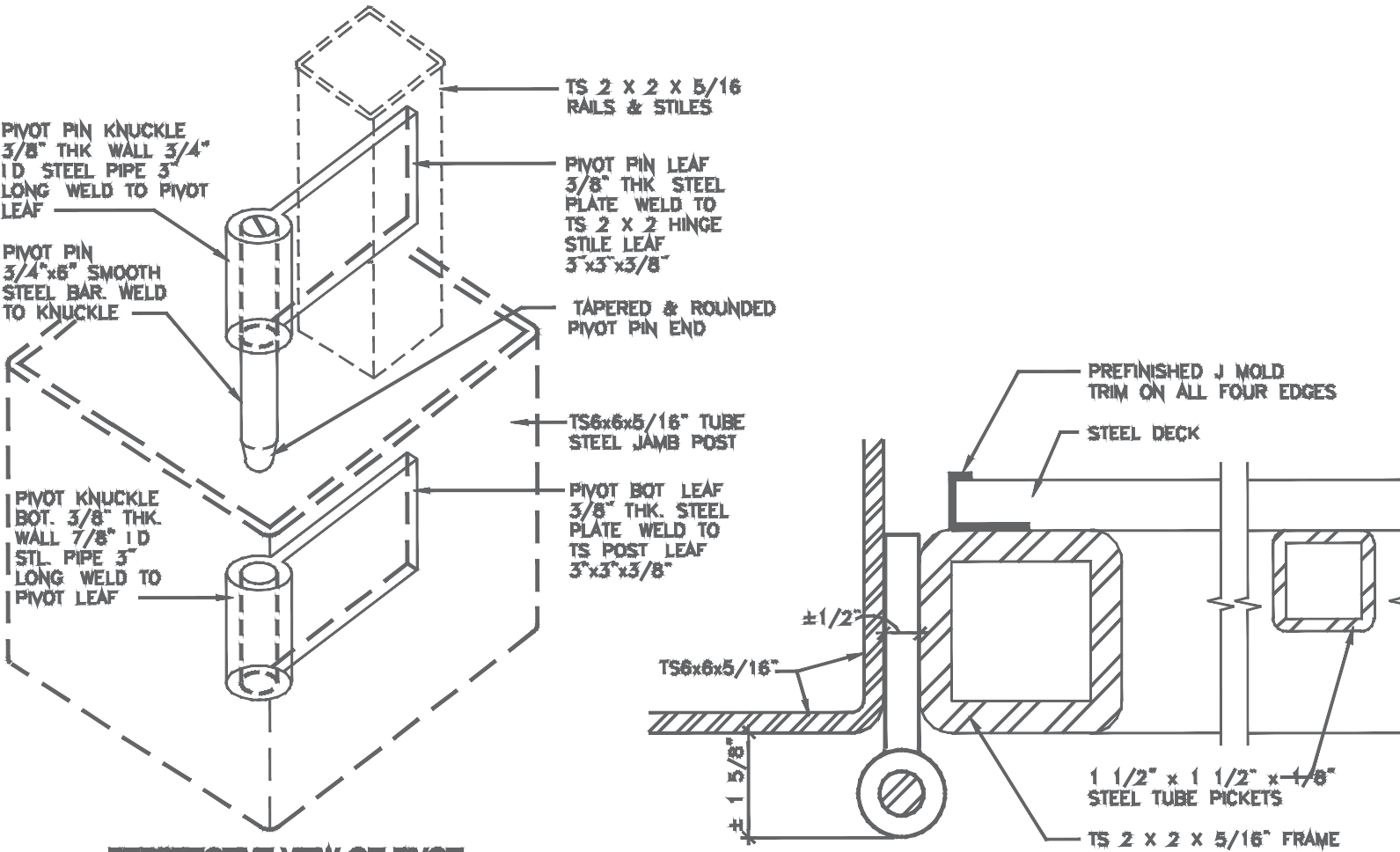
05 GATE JAMB DETAIL
SCALE 3" = 1'-0"
C:\Projects\Details\Dump-05



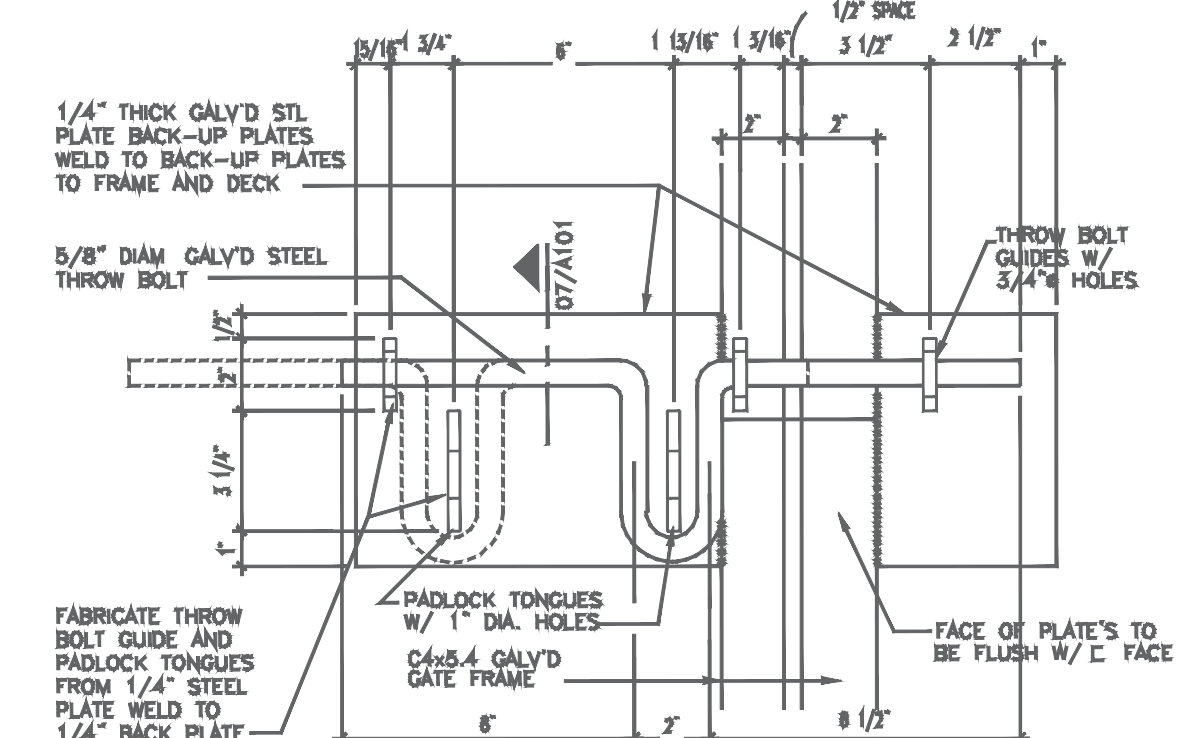
06 SECTION AT OPENING
SCALE 1 1/2" = 1'-0"
C:\Projects\Details\Dump-06



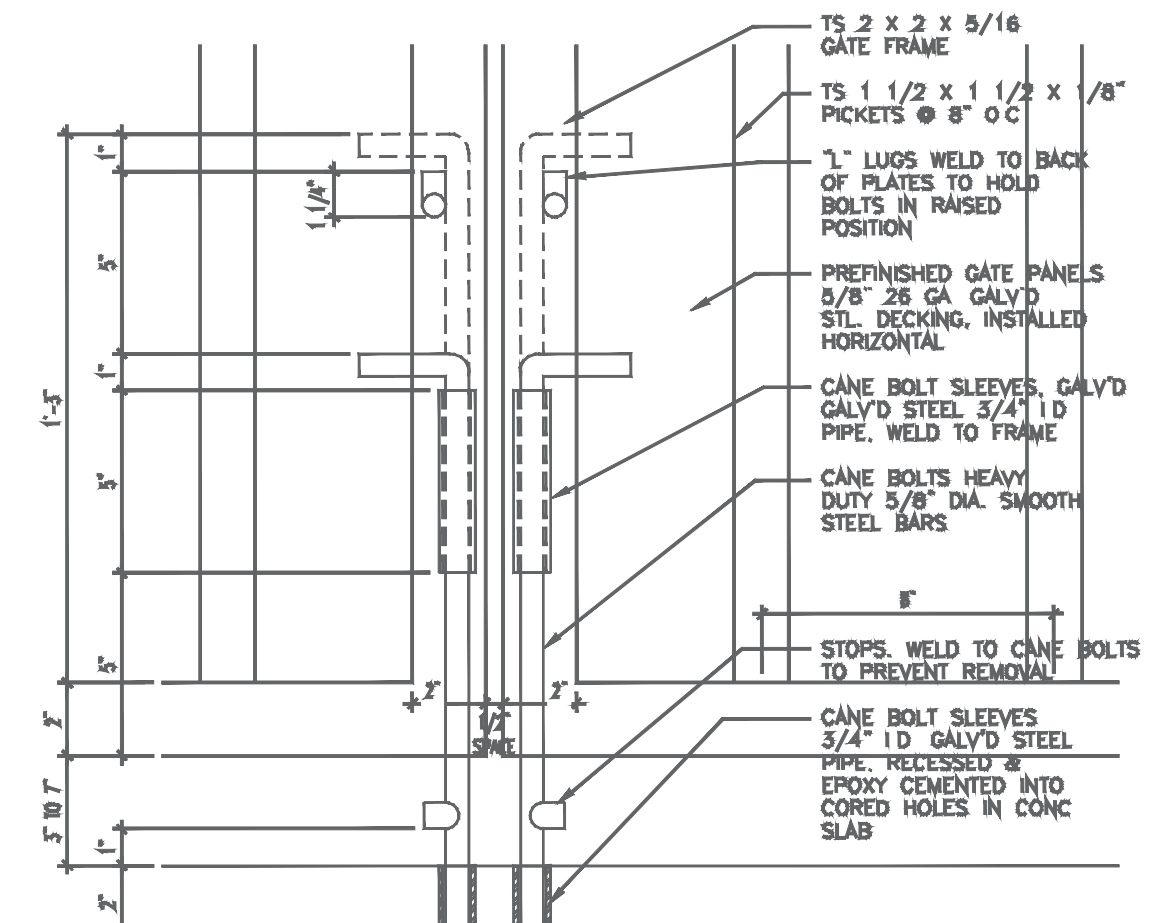
07 THROW BOLT DETAIL SECTION
SCALE 3" = 1'-0"
C:\Projects\Details\Dump-07



04 GATE PIVOTS DETAILS
SCALE 1/2" = 1'-0"
C:\Projects\Dump-04



08 THROW BOLT DETAIL
SCALE 3" = 1'-0"
C:\Projects\Details\Dump-08



09 GATE CANE BOLTS DETAIL
SCALE 3" = 1'-0"
C:\Projects\Details\Dump-09