

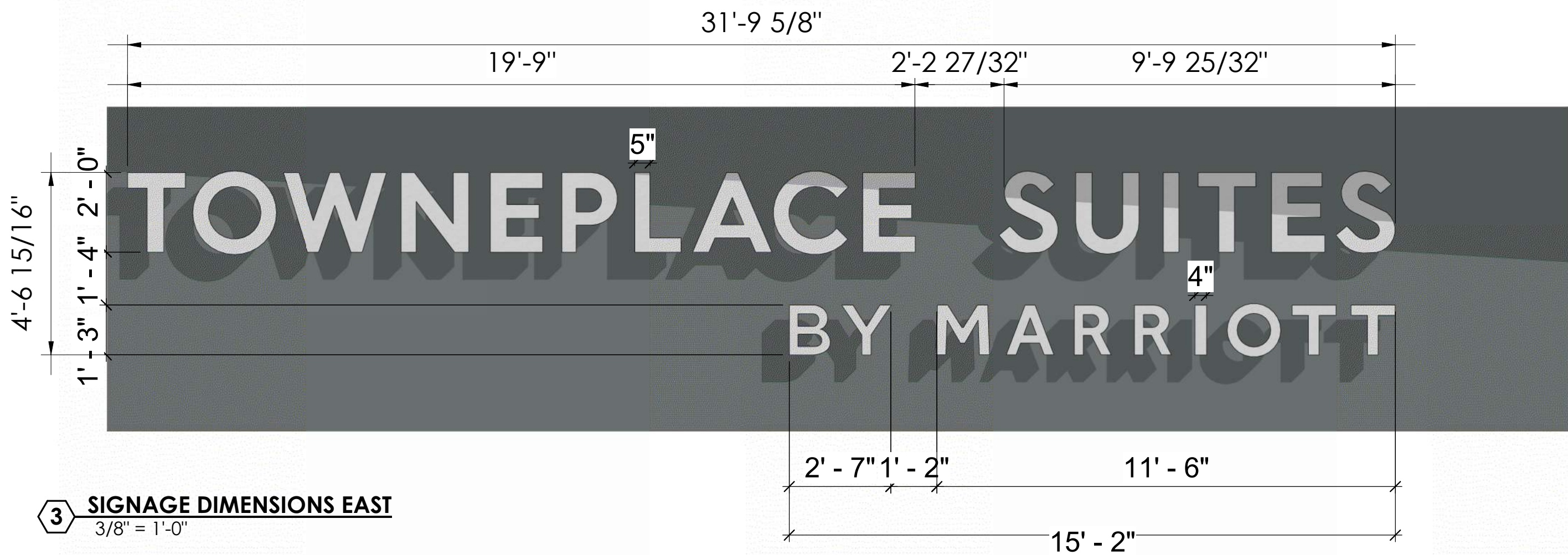


1 EAST ELEVATION
1/8" = 1'-0"

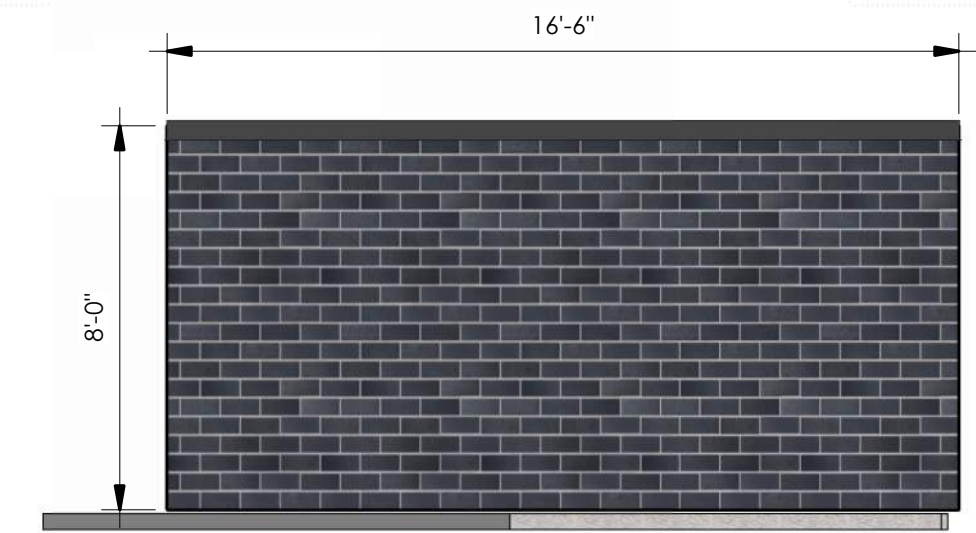


2 NORTH ELEVATION
1/8" = 1'-0"

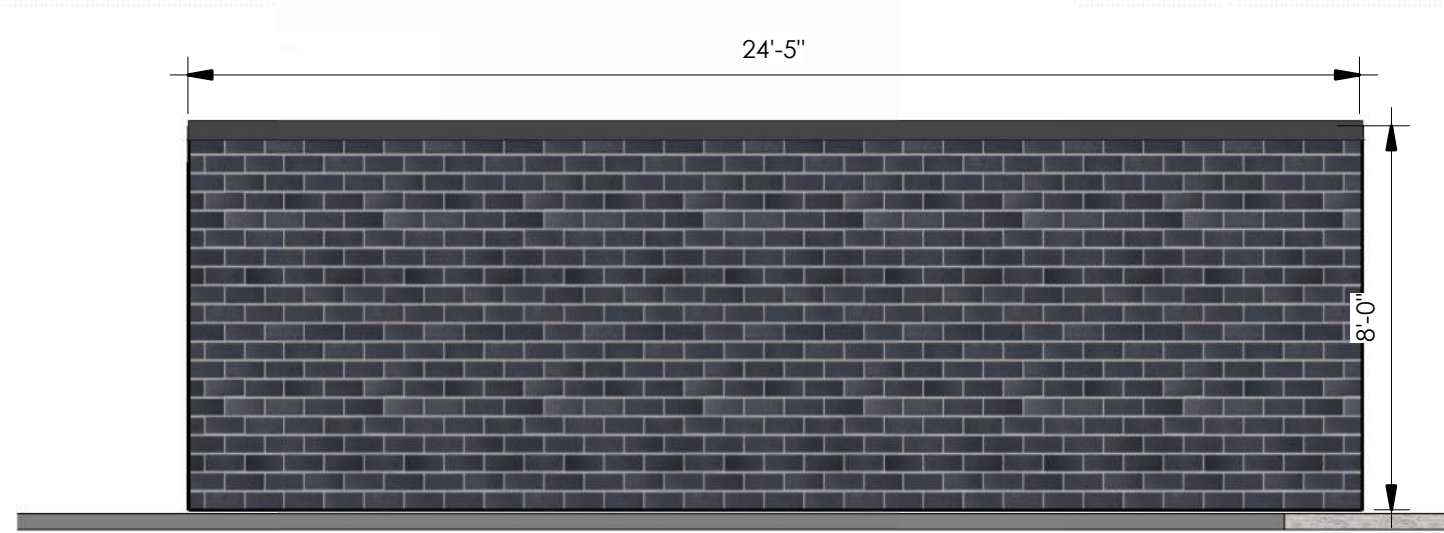
MATERIAL CALLOUTS		ADDITIONAL NOTES:	ELEVATION PRECENTAGES	
BR-1	ACME BRICK- "MANGANESE IRONSPOT"	<ul style="list-style-type: none">ALL SIGNAGE SUBJECT TO BUILDING INSPECTION DEPARTMENT APPROVALMECHANICAL UNITS SHALL BE SCREENED IN ACCORDANCE WITH LOCAL CITY AND ZONING ORDINANCES.UTILITY BOXES AND CONDUIT SHALL BE PAINTED TO MATCH BUILDING COLORROMAN SIZE, FACE BRICK, WITH 3/8" CONCAVE GROUT JOINT- MORTAR TO BE MATCHED TO GROUTCONTRACTOR TO ENSURE METAL PANELS ARE INSTALLED IN ACCORDANCE WITH MANUFACTURERS RECOMMENDATION. SIGN DESIGNED AND FABRICATED BY APPROVED VENDOR TO MEET BRAND STANDARDS, FOR LOCATION ONLYALL UTILITY BOXES AND METERS SHALL BE PAINTED TO MATCH SURROUNDING BUILDING FACADEFINAL SIGN DESIGN TO BE DRAFTER BY THIRD PARTY CONTRACTOR TO ENSURE FINAL SIGN PACKAGE IS SUBMITTED APPROVED BY THE BRAND	NORTH ELEVATION OVERALL 13,755 TOTAL SQ. FT. 2,045 SQ. FT. - GLAZING 9,710 SQ. FT. - MASONRY MATERIALS <ul style="list-style-type: none">STUCCOBRICK 0 SQ. FT. - NICHIA FIBER BOARD SIGNAGE - 85 SF	EAST ELEVATION OVERALL - 7,824 TOTAL SQ. FT. 1,011 SQ. FT. - GLAZING 6,647 SQ. FT. - MASONRY MATERIALS <ul style="list-style-type: none">STUCCOBRICK 166 SQ. FT. - NICHIA FIBER BOARD SIGNAGE - 85SF
SU-1	STUCCO - "BENJAMIN MOORE WHITE DOVE"		SOUTH ELEVATION OVERALL - 13,543 TOTAL SQ. FT. 2,909 SQ. FT. - GLAZING 9,265 SQ. FT. - MASONRY MATERIALS <ul style="list-style-type: none">STUCCOBRICK 1,369 SQ. FT. - NICHIA FIBER BOARD SIGNAGE - 85 SF	WEST ELEVATION OVERALL - 7,966 TOTAL SQ. FT. 1,487 SQ. FT. - GLAZING 6,033 SQ. FT. - MASONRY MATERIALS <ul style="list-style-type: none">STUCCOBRICK 446 SQ. FT. - NICHIA FIBER BOARD SIGNAGE - 85SF
SU-2	STUCCO - "BENJAMIN MOORE GUNMETAL 1602"			
AP-1	NICHIA FIBER BOARD- "IVORY"			
GL	EXTERIOR WINDOWS: STOREFRONT WINDOW SYSTEM			
SF	STOREFRONT - BLACK ANODIZED			
AF	ALUMINUM PARAPET FLASHING TO MATCH STOREFRONT			



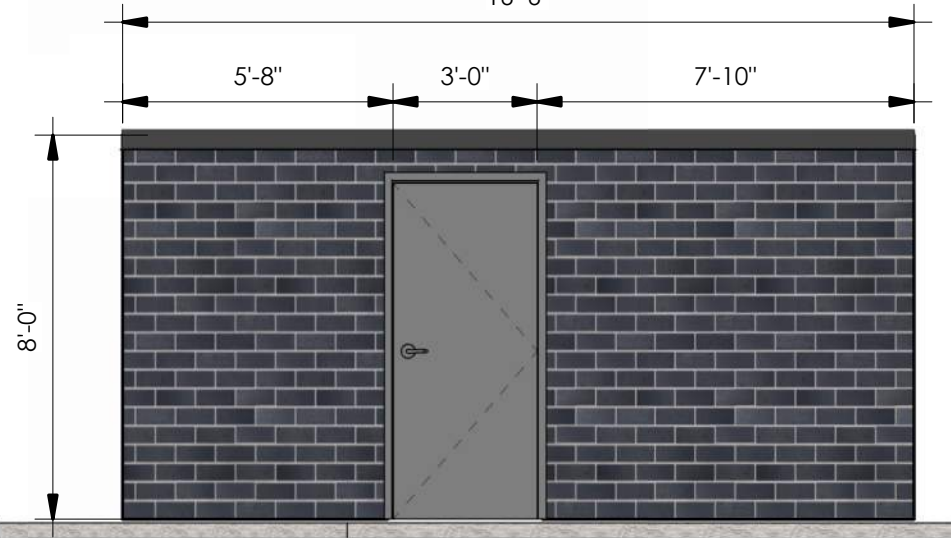
3 SIGNAGE DIMENSIONS EAST
3/8" = 1'-0"



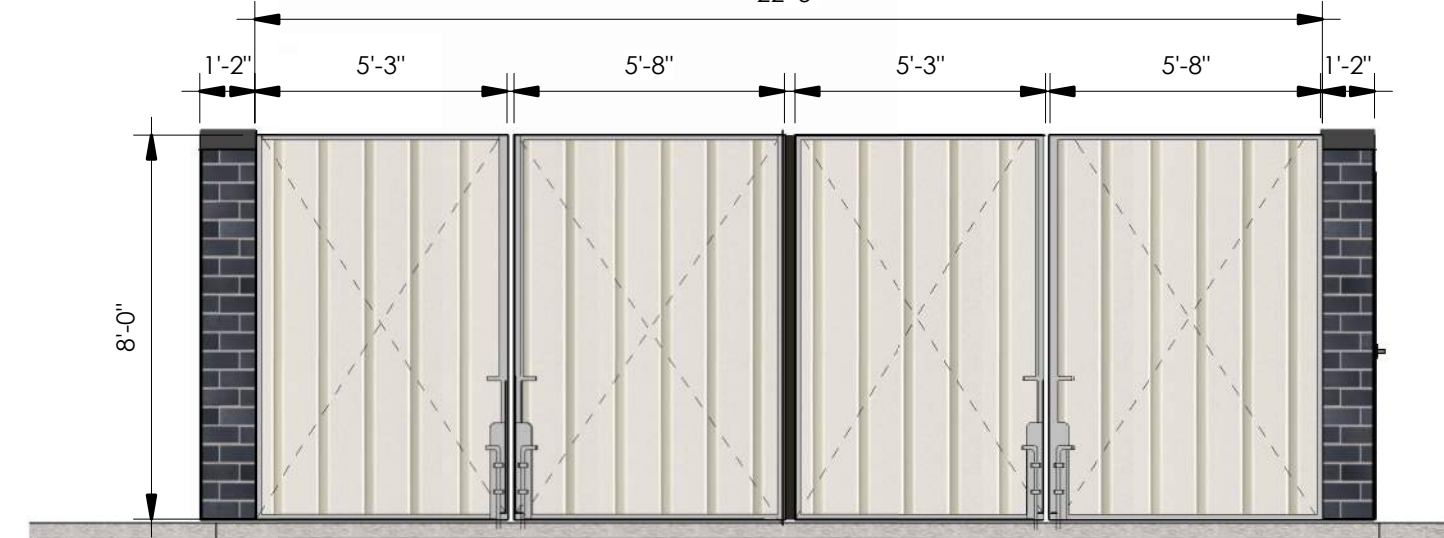
5 DUMPSTER SIDE ELEVATION
1/4" = 1'-0"



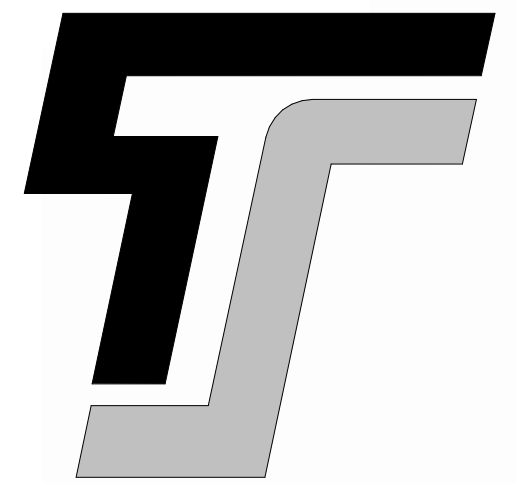
6 DUMPSTER BACK ELEVATIONS
1/4" = 1'-0"



7 DUMPSTER DOOR ELEVATION
1/4" = 1'-0"



4 DUMPSTER GATE ELEVATION
1/4" = 1'-0"



TYPE-SIX
DEVELOPMENT SERVICES, LLC
910 SOUTH MAIN STREET #150
GRAPEVINE, TEXAS 76054
972.677.9075

TOWNEPLACE SUITES COPPELL
SWH COPPELL, LLC
EAST DIVIDEND DR
COPPELL, TX 75019

PROJECT # 25009

ARCHITECT		
D. HAYES HINKLE		
ISSUE DATE		
19 MAY 2025		
ISSUED FOR		
PERMIT		

#	Revision	Date

SHEET NAME
BUILDING ELEVATIONS

SHEET NUMBER
A5.01

THIS DOCUMENT IS
INCOMPLETE AND MAY
NOT BE USED FOR
REGULATORY APPROVAL,
PERMIT, OR
CONSTRUCTION.

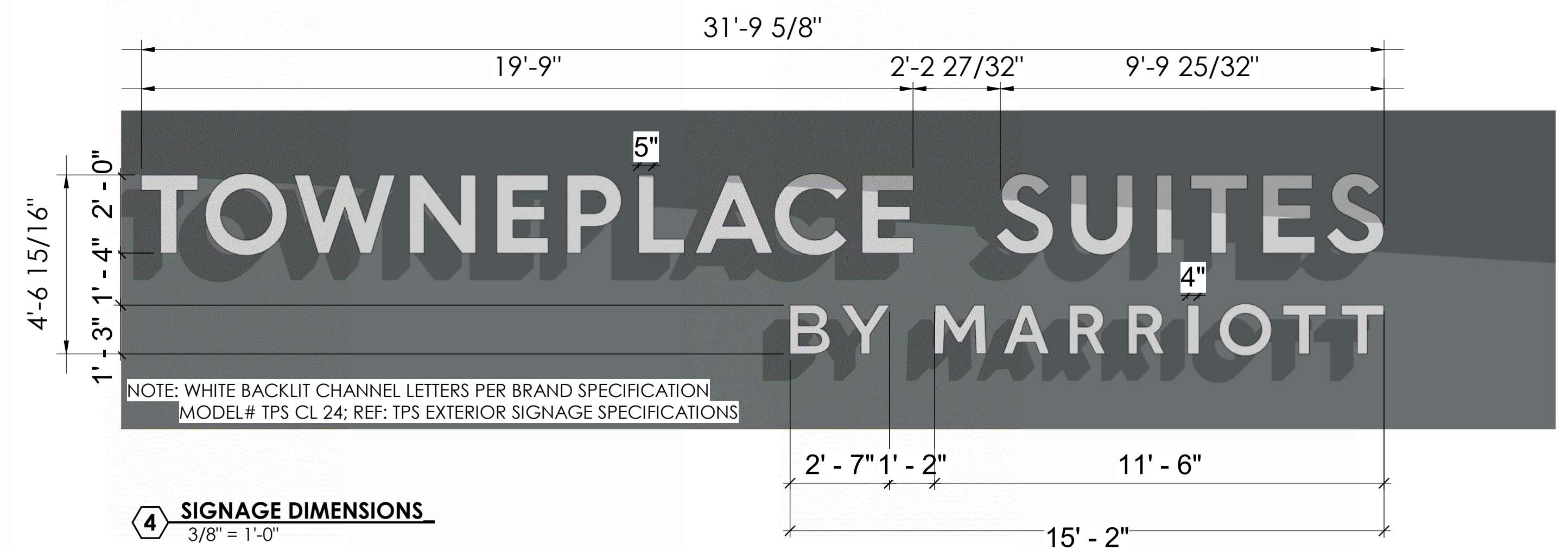
D. HAYES HINKLE - 26067

8/10/2025 4:58:12 PM

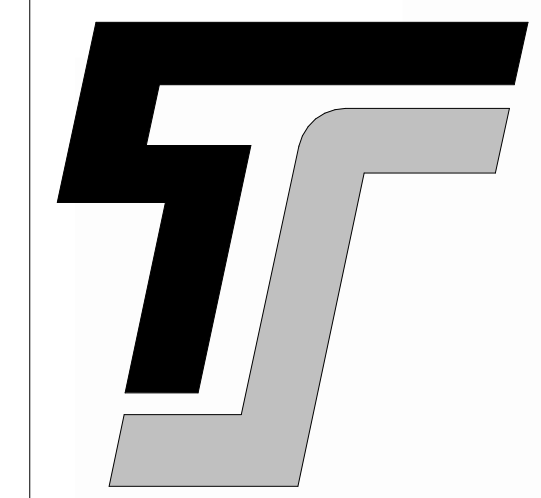


2 WEST ELEVATION
1/8" = 1'-0"

MATERIAL CALLOUTS		ADDITIONAL NOTES:	ELEVATION PRECENTAGES	
BR-1	ACME BRICK- "MANGANESE IRONSPOT"	<ul style="list-style-type: none">ALL SIGNAGE SUBJECT TO BUILDING INSPECTION DEPARTMENT APPROVAL.MECHANICAL UNITS SHALL BE SCREENED IN ACCORDANCE WITH LOCAL CITY AND ZONING ORDINANCES.UTILITY BOXES AND CONDUIT SHALL BE PAINTED TO MATCH BUILDING COLORROMAN SIZE, FACE BRICK, WITH 3/8" CONCAVE GROUT JOINT- MORTAR TO BE MATCHED TO GROUTCONTRACTOR TO ENSURE METAL PANELS ARE INSTALLED IN ACCORDANCE WITH MANUFACTURERS RECOMMENDATION.SIGN DESIGNED AND FABRICATED BY APPROVED VENDOR TO MEET BRAND STANDARDS, FOR LOCATION ONLYALL UTILITY BOXES AND METERS SHALL BE PAINTED TO MATCH SURROUNDING BUILDING FACADE.FINAL SIGN DESIGN TO BE DRAFTER BY THIRD PARTY CONTRACTOR TO ENSURE FINAL SIGN PACKAGE IS SUBMITTED APPROVED BY THE BRAND	NORTH ELEVATION OVERALL - 13,755 TOTAL SQ. FT. 2,045 SQ. FT. - GLAZING 9,710 SQ. FT. - MASONRY MATERIALS <ul style="list-style-type: none">STUCCOBRICK 0 SQ. FT. - NICHIA FIBER BOARD SIGNAGE - 85 SF	EAST ELEVATION OVERALL - 7,824 TOTAL SQ. FT. 1,011 SQ. FT. - GLAZING 6,647 SQ. FT. - MASONRY MATERIALS <ul style="list-style-type: none">STUCCOBRICK 166 SQ. FT. - NICHIA FIBER BOARD
SU-1	STUCCO - "BENJAMIN MOORE WHITE DOVE"		SOUTH ELEVATION OVERALL - 13,543 TOTAL SQ. FT. 2,909 SQ. FT. - GLAZING 9,265 SQ. FT. - MASONRY MATERIALS <ul style="list-style-type: none">STUCCOBRICK 1,369 SQ. FT. - NICHIA FIBER BOARD SIGNAGE - 85 SF	WEST ELEVATION OVERALL - 7,966 TOTAL SQ. FT. 1,487 SQ. FT. - GLAZING 6,033 SQ. FT. - MASONRY MATERIALS <ul style="list-style-type: none">STUCCOBRICK 446 SQ. FT. - NICHIA FIBER BOARD SIGNAGE - 85SF
SU-2	STUCCO - "BENJAMIN MOORE GUNMETAL 1602"			
AP-1	NICHIA FIBER BOARD- "IVORY"			
GL	EXTERIOR WINDOWS: STOREFRONT WINDOW SYSTEM			
SF	STOREFRONT - BLACK ANODIZED			
AF	ALUMINUM PARAPET FLASHING TO MATCH STOREFRONT			



1 SOUTH ELEVATION
1/8" = 1'-0"



TYPE-SIX
DEVELOPMENT SERVICES, LLC
910 SOUTH MAIN STREET #150
GRAPEVINE, TEXAS 76054
972.677.9075

TOWNEPLACE SUITES COPPELL
SWH COPPELL, LLC
EAST DIVIDEND DR
COPPELL, TX 75019

PROJECT # 25009

ARCHITECT		
D. HAYES HINKLE		
ISSUE DATE		
19 MAY 2025		
ISSUED FOR		
PERMIT		
#	Revision	Date
SHEET NAME		
BUILDING ELEVATIONS		
SHEET NUMBER		
A5.02		

THIS DOCUMENT IS INCOMPLETE AND MAY NOT BE USED FOR REGULATORY APPROVAL, PERMIT, OR CONSTRUCTION.

D. HAYES HINKLE - 26067
8/10/2025 4:58:16 PM

#	Revision	Date



2 SOUTH ELEVATION MATERIALS
1/8" = 1'-0"

ENDICOTT
MANGANESE IRONSPOT
BR-1

NICHIA FIBER BOARD
IVORY
AP-1

Gunmetal
1602

BENJAMIN MOORE
SU-2

White Dove
OC-17

BENJAMIN MOORE
SU-1

BLACK ANODIZED ALUMINUM
AF/SF

MATERIAL CALLOUTS	ADDITIONAL NOTES:	ELEVATION PRECENTAGES	
BR-1	ACME BRICK-"MANGANESE IRONSPOT"	NORTH ELEVATION OVERALL - 13,755 TOTAL SQ. FT. 2,045 SQ. FT. - GLAZING 9,710 SQ. FT. - MASONRY MATERIALS <ul style="list-style-type: none">• STUCCO• BRICK 0 SQ. FT. - NICHIA FIBER BOARD SIGNAGE - 85 SF	EAST ELEVATION OVERALL - 7,824 TOTAL SQ. FT. 1,011 SQ. FT. - GLAZING 6,647 SQ. FT. - MASONRY MATERIALS <ul style="list-style-type: none">• STUCCO• BRICK 166 SQ. FT. - NICHIA FIBER BOARD
SU-1	STUCCO - "BENJAMIN MOORE WHITE DOVE"		
SU-2	STUCCO - "BENJAMIN MOORE GUNMETAL 1602"		
AP-1	NICHIA FIBER BOARD-"IVORY"		
GL	EXTERIOR WINDOWS: STOREFRONT WINDOW SYSTEM		
SF	STOREFRONT - BLACK ANODIZED	SOUTH ELEVATION OVERALL - 13,543 TOTAL SQ. FT. 2,909 SQ. FT. - GLAZING 9,265 SQ. FT. - MASONRY MATERIALS <ul style="list-style-type: none">• STUCCO• BRICK 1,369 SQ. FT. - NICHIA FIBER BOARD SIGNAGE - 85 SF	WEST ELEVATION OVERALL - 7,966 TOTAL SQ. FT. 1,487 SQ. FT. - GLAZING 6,033 SQ. FT. - MASONRY MATERIALS <ul style="list-style-type: none">• STUCCO• BRICK 446 SQ. FT. - NICHIA FIBER BOARD SIGNAGE - 85SF
AF	ALUMINUM PARAPET FLASHING TO MATCH STOREFRONT		