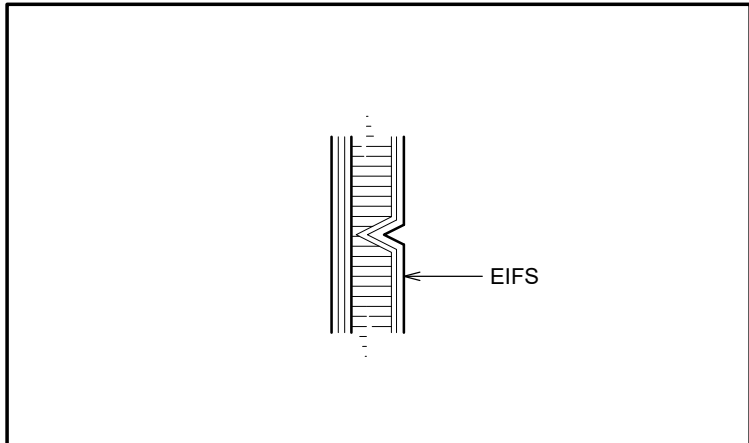




1
A5
PROPOSED SIDE ELEVATION
SCALE: 1/4"=1'-0"



2
A5
PROPOSED FRONT ELEVATION
SCALE: 1/4"=1'-0"



3
A5
SECTION DETAIL @ TYPICAL
EIFS REVEAL
SCALE: 2 1/2"=1'-0"

LENGTH OF BUILDING	49'-7"
ALLOWABLE SIGNAGE	49.58 SQFT
PROVIDED SIGNAGE	48.00 SQFT

GENERAL NOTES

- SEALANT / CAULKING AROUND DOOR / WINDOW FRAMES. COLOUR: TO MATCH WINDOW / DOOR FRAMES.
- THE CONTRACTOR SHALL BECOME FAMILIAR WITH AND FOLLOW ALL DRAWINGS AND SPECIFICATIONS.

MATERIAL % PER ELEVATION				
	BRICK	EIFS	NICHIHA	GLAZING
FRONT	20%	0%	50%	30%
DT	45%	27%	26%	2%
REAR	61%	39%	0%	0%
SIDE	43%	14%	32%	11%
TOTAL	42%	20%	27%	11%

SYMBOL LEGEND

1	NOTE REFERENCE REFER TO ELEVATION NOTES
FN#	FINISH TYPE

EXTERIOR ELEVATION NOTES

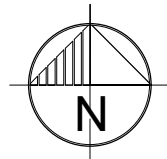
- PRE-FINISHED METAL CAP FLASHING C/W DRIP.
- G.C. TO PROVIDE AND INSTALL DOUBLE LAYER OF REINFORCING MESH TO MIN. 2'-2" (TO MATCH THE SPANDREL HEIGHT ON THE LOWER WINDOWS AND THE COLOR TRANSITION) ABOVE GRADE AT ALL EIFS LOCATIONS (TYP.) IN ORDER TO ATTAIN ABUSE RESISTANCE STUCCO SYSTEM.
- PRE-FINISHED METAL FLASHING.
- EXTRUDED ALUMINUM SIDING, COLOR: CANADIAN SHIELD. REFER TO EXTERIOR FINISH SCHEDULE.
- EIFS [FC-8](#) TO EXTEND TO TOP OF PAINTED STRIPE. REFER TO EXTERIOR FINISH SCHEDULE.
- PRE-FINISHED 'BLACK ANODIZED' ALUMINUM STOREFRONT SYSTEM WITH INSULATED GLAZING, REFER TO A11.
- EXPOSED FOUNDATION TO BE PARGED AND FREE OF IMPERFECTIONS.
- GAS UTILITY METER; REFER TO CIVIL DRAWINGS
- OVERFLOW SCUPPER, LEVEL OF OUTFLOW TO BE 2" ABOVE PRIMARY DOWNSPOUT. RE: 7/A4
- INTERNALLY ILLUMINATED BUILDING SIGNAGE PROVIDED AND INSTALLED BY SIGN COMPANY "COFFEE & BAKERY" SCRIPT LETTERS ARE "WHITE". G.C. TO PROVIDE AND INSTALL $\frac{3}{8}$ " EXTERIOR GRADE PRESSURE TREATED PLYWOOD BACKING AND ALL FINAL ELECTRICAL CONNECTION. SIGN MANUFACTURER SHALL OBTAIN STRUCTURALLY SEALED DRAWINGS AND SIGNAGE PERMITS FROM THE CITY BASED ON LOCAL REQUIREMENTS. G.C. SHALL VERIFY ACTUAL LOCATION & SIZE OF SIGNS WITH SIGN MANUFACTURER'S APPROVED DRAWINGS AND COORDINATE LOCATIONS OF BLOCKING AND UTILITIES. G.C. TO COORDINATE WITH SIGN INSTALLER TO USE VHM DRILL BIT WHILE DRILLING FOR ELECTRICAL FEED LINES AND SIGNAGE FASTENERS. ALL ELEMENTS PROVIDED BY SIGNAGE FABRICATOR TO BE REVIEWED AND APPROVED BY TDL PRIOR TO PRODUCTION.
- GALVANIZED STEEL ROOF ACCESS LADDER TO BE PRIMED AND PAINTED [P-08](#)
- EXTERIOR STAMP ART TO BE INSTALLED BY G.C.
- PROVIDE & INSTALL 6" DIAMETER STEEL PIPE BOLLARD AT DRIVE-THRU WINDOW. G.C. TO PAINT [P-17](#) REFER TO EXTERIOR FINISH SCHEDULE.
- AUTOMATIC DRIVE THRU WINDOW C/W BODY SENSOR. REFER TO SHEET A11 FOR DETAILS & SPECIFIED MODEL.
- NO ENTRY DECAL BY SIGNAGE SUPPLIER, TO BE INSTALLED BY G.C.
- PRE-FINISHED GALVANIZED STEEL DOWNSPOUT & COLLECTOR BOX PAINTED [P-08](#) OR FACTORY FINISH BLACK. REFER TO CIVIL DRAWINGS FOR TO DETERMINE IF DOWNSPOUTS ARE SPLASHING ON CONCRETE PAD OR TIED TO THE STORM SEWER LINE.
- EXTERIOR RECYCLING UNIT SUPPLIED BY TDL GROUP LTD. & INSTALLED BY G.C.
- DASHED LINE INDICATES T/O ROOF BEHIND PARAPET.
- C/T CABINET/ DISCONNECT SWITCH AND ELECTRICAL METER.
- LINE OF PARAPET WALLS BEYOND.
- GENERAL PURPOSE EXTERIOR LIGHTING FIXTURES.
- EMERGENCY REM-2 LIGHTING (FINISH - SILVER), REFER TO ELECTRICAL DRAWINGS.
- METAL RAILING SUPPLIED AND INSTALLED BY G.C. REFER TO ARCHITECTURAL AND CIVIL SITE PLAN(S) FOR LOCATION. PAINT FINISH [P-08](#) OR FACTORY FINISH BLACK. REFER TO DETAIL 9a/A8.
- KNOX BOX SUPPLIED AND INSTALLED BY G.C. TYPE AND LOCATION TBD BY LOCAL FIRE DEPARTMENT. G.C. TO COORDINATE.
- ALL BASE FLASHING TO MATCH ADJACENT MATERIAL COLORS.
- HOSE BIB. G.C. TO PAINT. COLOUR TO MATCH ADJACENT STUCCO COORDINATE EXACT LOCATION WITH G.C. REFER TO MECHANICAL DRAWINGS.
- $\frac{1}{2}$ " X $\frac{1}{2}$ " REVEAL LINE IN STUCCO FINISH. REFER TO DETAIL 3/A5.
- G.C. TO PROVIDE & INSTALL S/S KICK PLATES (AT BOTTOM PANELS) ON BOTH SIDES OF MAIN ENTRANCE DOORS & EXIT DOORS. REFER TO SHEET A11 FOR SPECS.
- CURB TO PROJECT 8" FROM FACE OF FACADE, REFER TO CIVIL DRAWINGS..
- NOT USED
- APPROXIMATE OUTLINE OF HVAC UNITS, REFER TO MECHANICAL DRAWINGS.
- C-CHANNEL BAND FURNISHED BY THUSA VIA SCHA AND INSTALLED BY G.C., BRACKET SUPPORT, LED STRIP LIGHTS AND DRIVERS (TO BE SUPPLIED BY LEKTRON BRANDING SOLUTIONS). G.C. TO PROVIDE AND INSTALL PRE FINISHED BRAKE METAL TRIM (COLOR: MATCH WINDOW FRAMES) BEHIND THE ENTIRE LENGTH OF LEKTRON BAND AND WIDTH TO BE MATCH LEKTRON BAND SIZE (5 1/2").
- G.C. TO PROVIDE & INSTALL APPROXIMATELY 134'-0" RUNNING LENGTH OF EXTERIOR ILLUMINATED LED STRIP LIGHTING (CL-2 BY LEKTRON BRANDING SOLUTIONS) AT C-CHANNEL BAND. REFER TO SHEET SP7 FOR CONTACT INFORMATION (COORDINATE WITH LEKTRON BRANDING SOLUTIONS) AND DETAIL 2/A7 FOR INSTALLATION OF LED STRIP LIGHT AND C-CHANNEL PANNEL SCHEDULE ON AS.
- EIFS [FC-7](#). REFER TO EXTERIOR FINISH SCHEDULE.
- WALL SCONCE LIGHTING. REFER TO EXTERIOR FINISH SCHEDULE.
- SIGN FABRICATOR TO PROVIDE AND INSTALL (MIN. 8" HIGH) ADDRESS VINYL ADHESIVE. G.C. TO COORDINATE W/ SIGN FABRICATOR. ALL ELEMENTS PROVIDED BY SIGNAGE FABRICATOR TO BE REVIEWED AND APPROVED BY TDL PRIOR TO PRODUCTION.
- SIGN FABRICATOR TO PROVIDE AND INSTALL 2'-0" DIAMETER TIM HORTONS VINYL ADHESIVE AS WELL AS INDIVIDUAL WHITE ADDRESS NUMBERS. G.C. TO COORDINATE WITH SIGN FABRICATOR. ALL ELEMENTS PROVIDED BY SIGNAGE FABRICATOR TO BE REVIEWED AND APPROVED BY TDL PRIOR TO PRODUCTION.
- G.C. TO COORDINATE WITH UTILITY COMPANIES FOR PLACEMENT/ LOCATION FOR BOLLARDS. G.C. TO PROVIDE 6" DIA. METAL BOLLARD FILL W/ CONCRETE AND PAINTED. G.C. TO PAINT [P-17](#)
- CONCRETE SIDEWALK (BY G.C). REFER TO ARCHITECTURAL AND CIVIL SITE PLAN(S).
- PREFABRICATED DRIVE-THRU CANOPY. G.C. TO ENSURE THE CANOPY IS ALIGNED WITH [P-02](#) ACCENT STRIP REFER TO EXTERIOR FINISH SCHEDULE FOR TYPE AND FINISH AND TO DETAIL 1/A7.2 FOR INSTALLATION. REFER TO STRUCTURAL DRAWINGS FOR CANOPY SUPPORT.

ISSUE TABLE		
No.	Date (mm/dd/yy)	Description

REVISIONS		
No.	Date	Description

DRAWINGS REVISED AS PER DESIGN BULLETIN		
No.	Date	Description

NOT FOR REGULATORY APPROVAL,
PERMITTING, or CONSTRUCTION
GREG RYDEN, ARCHITECT
DATE: 06/02/2023



PROJECT NORTH

THIS DRAWING IS OWNED BY OR LICENSED FOR USE BY TIM HORTONS (OR ITS AFFILIATED OR RELATED COMPANIES) AND MAY NOT BE REPRODUCED, USED, DOWNLOADED, DISSEMINATED, PUBLISHED, OR TRANSFERRED IN ANY FORM OR BY ANY MEANS, EXCEPT WITH THE PRIOR WRITTEN CONSENT OF TIM HORTONS. COPYRIGHT INFRINGEMENT IS A VIOLATION OF FEDERAL LAW SUBJECT TO CRIMINAL AND CIVIL PENALTIES.

THE CONTRACTOR IS TO VERIFY ALL DIMENSIONS AND CONDITIONS ON THE PROJECT AND TO REPORT ANY DISCREPANCIES TO THE TIM HORTONS REPRESENTATIVE PRIOR TO COMMENCING WORK. THESE DRAWINGS ARE NOT TO BE USED FOR CONSTRUCTION PURPOSES UNLESS INDICATED BY TIM HORTONS AS 'ISSUED FOR CONSTRUCTION'.

MEP
CONSULTANT
LOGO

Project

Tim Hortons

Store Type

US WELCOME 2020 MODEL
1600-21 (OPTION 1)

Location

TBD NORTHWESTERN DR.
COPPELL, TX
75019

Drawing Title

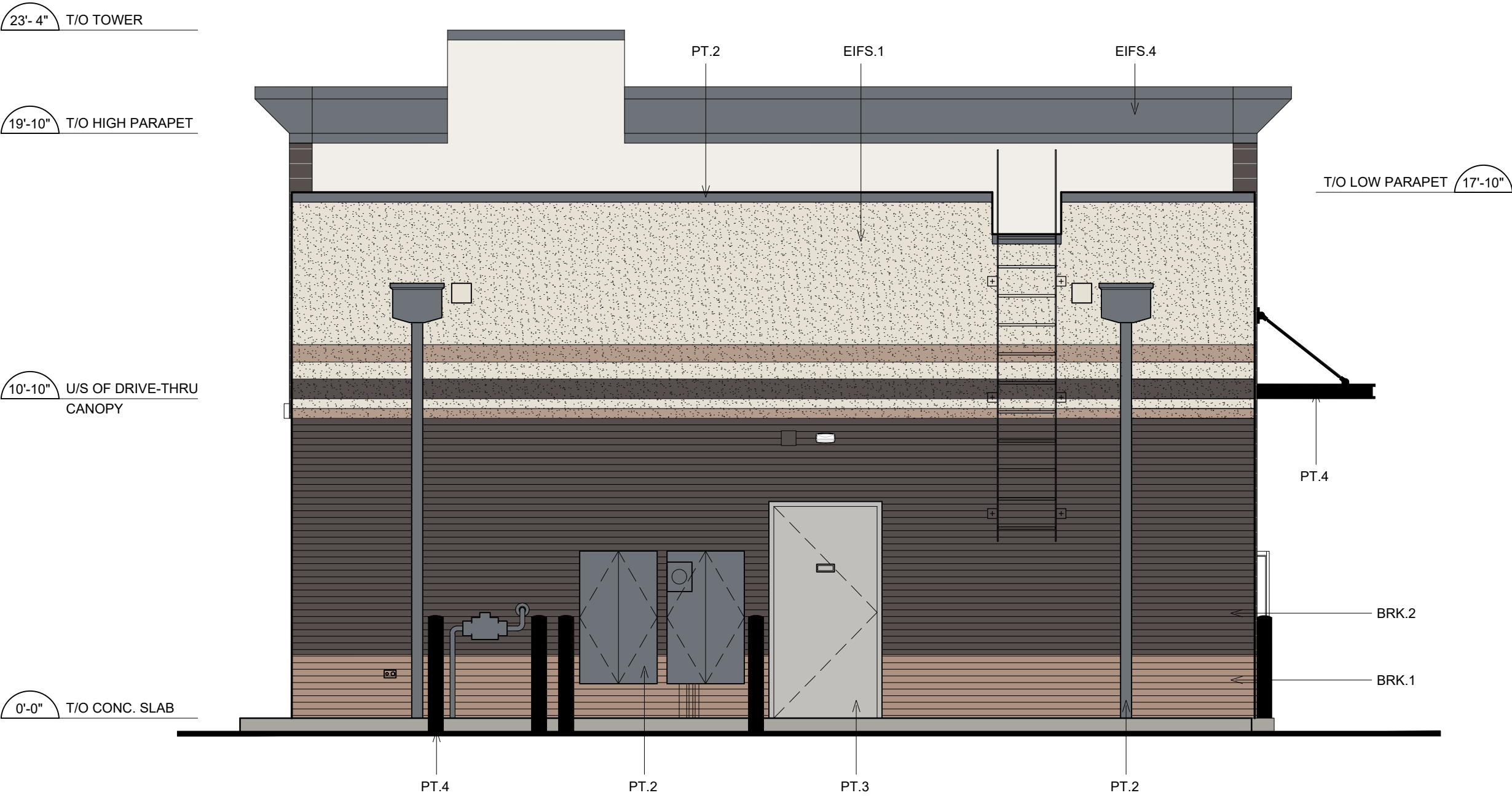
EXTERIOR
ELEVATIONS

Drawn	GA	Checked	GR
Scale	AS SHOWN	Date	JUNE 2023
Project No.	TBD	Drawing No.	A5



1 PROPOSED DRIVE THRU ELEVATION

SCALE: 1/4"=1' - 0"



2 PROPOSED REAR ELEVATION

SCALE: 1/4"=1' - 0"

LENGTH OF BUILDING	49'-7"
ALLOWABLE SIGNAGE	49.58 SQFT
PROVIDED SIGNAGE	48.00 SQFT

MATERIAL % PER ELEVATION				
	BRICK	EIFS	NICHHA	GLAZING
FRONT	20%	0%	50%	30%
DT	45%	27%	26%	2%
REAR	61%	39%	0%	0%
SIDE	43%	14%	32%	11%
TOTAL	42%	20%	27%	11%

GENERAL NOTES

- SEALANT / CAULKING AROUND DOOR / WINDOW FRAMES. COLOUR: TO MATCH WINDOW / DOOR FRAMES.
- THE CONTRACTOR SHALL BECOME FAMILIAR WITH AND FOLLOW ALL DRAWINGS AND SPECIFICATIONS.

SYMBOL LEGEND

1	NOTE REFERENCE REFER TO ELEVATION NOTES
FN#	FINISH TYPE

EXTERIOR ELEVATION NOTES

- PRE-FINISHED METAL CAP FLASHING C/W DRIP.
- G.C. TO PROVIDE AND INSTALL DOUBLE LAYER OF REINFORCING MESH TO MIN. 2'-2" (TO MATCH THE SPANDREL HEIGHT ON THE LOWER WINDOWS AND THE COLOR TRANSITION) ABOVE GRADE AT ALL EIFS LOCATIONS (TYP.) IN ORDER TO ATTAIN ABUSE RESISTANCE STUCCO SYSTEM.
- PRE-FINISHED METAL FLASHING.
- EXTRUDED ALUMINUM SIDING, COLOR: CANADIAN SHIELD. REFER TO EXTERIOR FINISH SCHEDULE.
- EIFS FC-8 TO EXTEND TO TOP OF PAINTED STRIPE. REFER TO EXTERIOR FINISH SCHEDULE.
- PRE-FINISHED 'BLACK ANODIZED' ALUMINUM STOREFRONT SYSTEM WITH INSULATED GLAZING, REFER TO A11.
- EXPOSED FOUNDATION TO BE PARGED AND FREE OF IMPERFECTIONS.
- GAS UTILITY METER, REFER TO CIVIL DRAWINGS
- OVERFLOW SCUPPER, LEVEL OF OUTFLOW TO BE 2" ABOVE PRIMARY DOWNSPOUT. RE: 7/A4
- INTERNALLY ILLUMINATED BUILDING SIGNAGE PROVIDED AND INSTALLED BY SIGN COMPANY "COFFEE & BAKERY" SCRIPT LETTERS ARE "WHITE". G.C. TO PROVIDE AND INSTALL $\frac{3}{4}$ " EXTERIOR GRADE PRESSURE TREATED PLYWOOD BACKING AND ALL FINAL ELECTRICAL CONNECTION. SIGN MANUFACTURER SHALL OBTAIN STRUCTURALLY SEALED DRAWINGS AND SIGNAGE PERMITS FROM THE CITY BASED ON LOCAL REQUIREMENTS. G.C. SHALL VERIFY ACTUAL LOCATION & SIZE OF SIGNS WITH SIGN MANUFACTURER'S APPROVED DRAWINGS AND COORDINATE LOCATIONS OF BLOCKING AND UTILITIES. G.C. TO COORDINATE WITH SIGN INSTALLER TO USE VHM DRILL BIT WHILE DRILLING FOR ELECTRICAL FEED LINES AND SIGNAGE FASTENERS. ALL ELEMENTS PROVIDED BY SIGNAGE FABRICATOR TO BE REVIEWED AND APPROVED BY TDL PRIOR TO PRODUCTION.
- GALVANIZED STEEL ROOF ACCESS LADDER TO BE PRIMED AND PAINTED P-08
- EXTERIOR STAMP ART TO BE INSTALLED BY G.C.
- PROVIDE & INSTALL 6" DIAMETER STEEL PIPE BOLLARD AT DRIVE-THRU WINDOW. G.C. TO PAINT P-17 REFER TO EXTERIOR FINISH SCHEDULE.
- AUTOMATIC DRIVE THRU WINDOW C/W BODY SENSOR. REFER TO SHEET A11 FOR DETAILS & SPECIFIED MODEL.
- NO ENTRY DECAL BY SIGNAGE SUPPLIER, TO BE INSTALLED BY G.C.
- PRE-FINISHED GALVANIZED STEEL DOWNSPOUT & COLLECTOR BOX PAINTED P-08 OR FACTORY FINISH BLACK. REFER TO CIVIL DRAWINGS FOR TO DETERMINE IF DOWNSPOUTS ARE SPLASHING ON CONCRETE PAD OR TIED TO THE STORM SEWER LINE.
- EXTERIOR RECYCLING UNIT SUPPLIED BY TDL GROUP LTD. & INSTALLED BY G.C.
- DASHED LINE INDICATES T/O ROOF BEHIND PARAPET.
- C/T CABINET/ DISCONNECT SWITCH AND ELECTRICAL METER.
- LINE OF PARAPET WALLS BEYOND.
- GENERAL PURPOSE EXTERIOR LIGHTING FIXTURES.
- EMERGENCY REM-2 LIGHTING (FINISH - SILVER), REFER TO ELECTRICAL DRAWINGS.
- METAL RAILING SUPPLIED AND INSTALLED BY G.C. REFER TO ARCHITECTURAL AND CIVIL SITE PLAN(S) FOR LOCATION. PAINT FINISH P-08 OR FACTORY FINISH BLACK. REFER TO DETAIL 9a/A8.
- KNOX BOX SUPPLIED AND INSTALLED BY G.C. TYPE AND LOCATION TBD BY LOCAL FIRE DEPARTMENT. G.C. TO COORDINATE.
- ALL BASE FLASHING TO MATCH ADJACENT MATERIAL COLORS.
- HOSE BIB. G.C. TO PAINT. COLOUR TO MATCH ADJACENT STUCCO COORDINATE EXACT LOCATION WITH G.C. REFER TO MECHANICAL DRAWINGS.
- $\frac{1}{2}$ " X $\frac{1}{2}$ " REVEAL LINE IN STUCCO FINISH. REFER TO DETAIL 3/A5.
- G.C. TO PROVIDE & INSTALL S/S KICK PLATES (AT BOTTOM PANELS) ON BOTH SIDES OF MAIN ENTRANCE DOORS & EXIT DOORS. REFER TO SHEET A11 FOR SPECS.
- CURB TO PROJECT 8" FROM FACE OF FACADE, REFER TO CIVIL DRAWINGS..
- NOT USED
- APPROXIMATE OUTLINE OF HVAC UNITS, REFER TO MECHANICAL DRAWINGS.
- C-CHANNEL BAND FURNISHED BY THUSA VIA SCHA AND INSTALLED BY G.C., BRACKET SUPPORT, LED STRIP LIGHTS AND DRIVERS (TO BE SUPPLIED BY LEKTRON BRANDING SOLUTIONS). G.C. TO PROVIDE AND INSTALL PRE FINISHED BRAKE METAL TRIM (COLOR: MATCH WINDOW FRAMES) BEHIND THE ENTIRE LENGTH OF LEKTRON BAND AND WIDTH TO BE MATCH LEKTRON BAND SIZE (5 $\frac{1}{2}$ ").
- G.C. TO PROVIDE & INSTALL APPROXIMATELY 134'-0" RUNNING LENGTH OF EXTERIOR ILLUMINATED LED STRIP LIGHTING (CL-2 BY LEKTRON BRANDING SOLUTIONS) AT C-CHANNEL BAND. REFER TO SHEET SP7 FOR CONTACT INFORMATION (COORDINATE WITH LEKTRON BRANDING SOLUTIONS) AND DETAIL 2/A7 FOR INSTALLATION OF LED STRIP LIGHT AND C-CHANNEL PANNEL SCHEDULE ON AS.
- EIFS FC-7. REFER TO EXTERIOR FINISH SCHEDULE.
- WALL SCONCE LIGHTING. REFER TO EXTERIOR FINISH SCHEDULE.
- SIGN FABRICATOR TO PROVIDE AND INSTALL (MIN. 8" HIGH) ADDRESS VINYL ADHESIVE. G.C. TO COORDINATE W/ SIGN FABRICATOR. ALL ELEMENTS PROVIDED BY SIGNAGE FABRICATOR TO BE REVIEWED AND APPROVED BY TDL PRIOR TO PRODUCTION.
- SIGN FABRICATOR TO PROVIDE AND INSTALL 2'-0" DIAMETER TIM HORTONS VINYL ADHESIVE AS WELL AS INDIVIDUAL WHITE ADDRESS NUMBERS. G.C. TO COORDINATE WITH SIGN FABRICATOR. ALL ELEMENTS PROVIDED BY SIGNAGE FABRICATOR TO BE REVIEWED AND APPROVED BY TDL PRIOR TO PRODUCTION.
- G.C. TO COORDINATE WITH UTILITY COMPANIES FOR PLACEMENT/ LOCATION FOR BOLLARDS. G.C. TO PROVIDE 6" DIA. METAL BOLLARD FILL W/ CONCRETE AND PAINTED. G.C. TO PAINT P-17 REFER TO EXTERIOR FINISH SCHEDULE.
- CONCRETE SIDEWALK (BY G.C). REFER TO ARCHITECTURAL AND CIVIL SITE PLAN(S).
- PREFABRICATED DRIVE-THRU CANOPY. G.C. TO ENSURE THE CANOPY IS ALIGNED WITH P-02 ACCENT STRIP REFER TO EXTERIOR FINISH SCHEDULE FOR TYPE AND FINISH AND TO DETAIL 1/A7.2 FOR INSTALLATION. REFER TO STRUCTURAL DRAWINGS FOR CANOPY SUPPORT.

ISSUE TABLE

No.	Date (mm/dd/yy)	Description

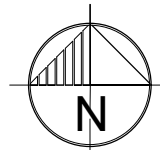
REVISIONS

No.	Date	Description

DRAWINGS REVISED AS PER DESIGN BULLETIN

No.	Date	Description

NOT FOR REGULATORY APPROVAL,
PERMITTING, or CONSTRUCTION
GREG RYDEN, ARCHITECT
DATE: 06/02/2023



PROJECT NORTH

THIS DRAWING IS OWNED BY OR LICENSED FOR USE BY TIM HORTONS (OR ITS AFFILIATED OR RELATED COMPANIES) AND MAY NOT BE REPRODUCED, USED, DOWNLOADED, DISSEMINATED, PUBLISHED, OR TRANSFERRED IN ANY FORM OR BY ANY MEANS, EXCEPT WITH THE PRIOR WRITTEN CONSENT OF TIM HORTONS. COPYRIGHT INFRINGEMENT IS A VIOLATION OF FEDERAL LAW SUBJECT TO CRIMINAL AND CIVIL PENALTIES.

THE CONTRACTOR IS TO VERIFY ALL DIMENSIONS AND CONDITIONS ON THE PROJECT AND TO REPORT ANY DISCREPANCIES TO THE TIM HORTONS REPRESENTATIVE PRIOR TO COMMENCING WORK. THESE DRAWINGS ARE NOT TO BE USED FOR CONSTRUCTION PURPOSES UNLESS INDICATED BY TIM HORTONS AS 'ISSUED FOR CONSTRUCTION'.

MEP CONSULTANT LOGO

Project

Tim Hortons

Store Type

US WELCOME 2020 MODEL
1600-21 (OPTION 1)

Location

TBD NORTHWESTERN DR.

COPPELL, TX
75019

Drawing Title

EXTERIOR ELEVATIONS

Drawn	GA	Checked	GR
Scale	AS SHOWN	Date	JUNE 2023
Project No.	TBD	Drawing No.	A5.1