

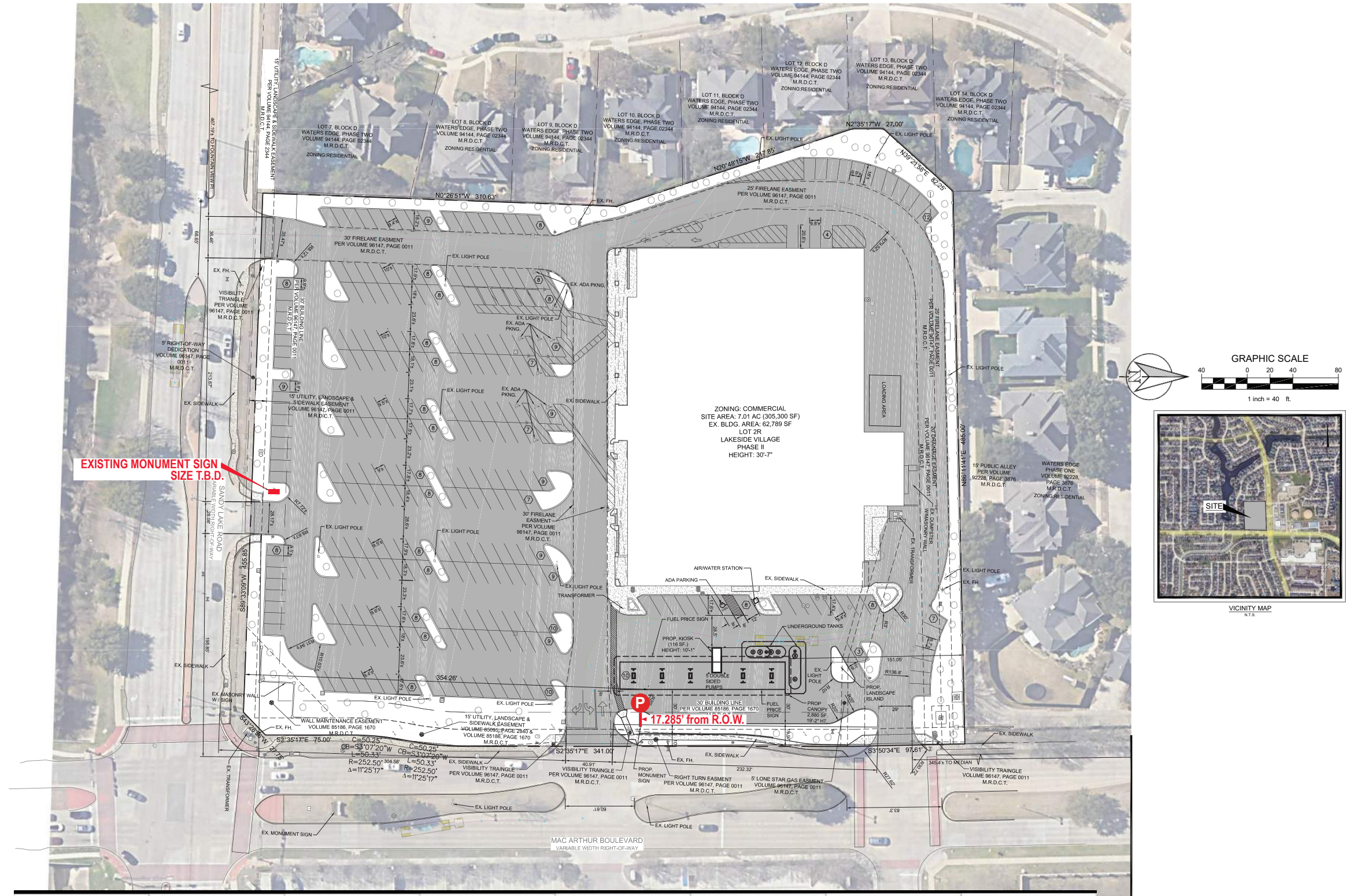


CUMMINGS

KROGER #448  
950 E. SANDY LAKE  
COPPELL, TX

983237720.06 05.04.2023

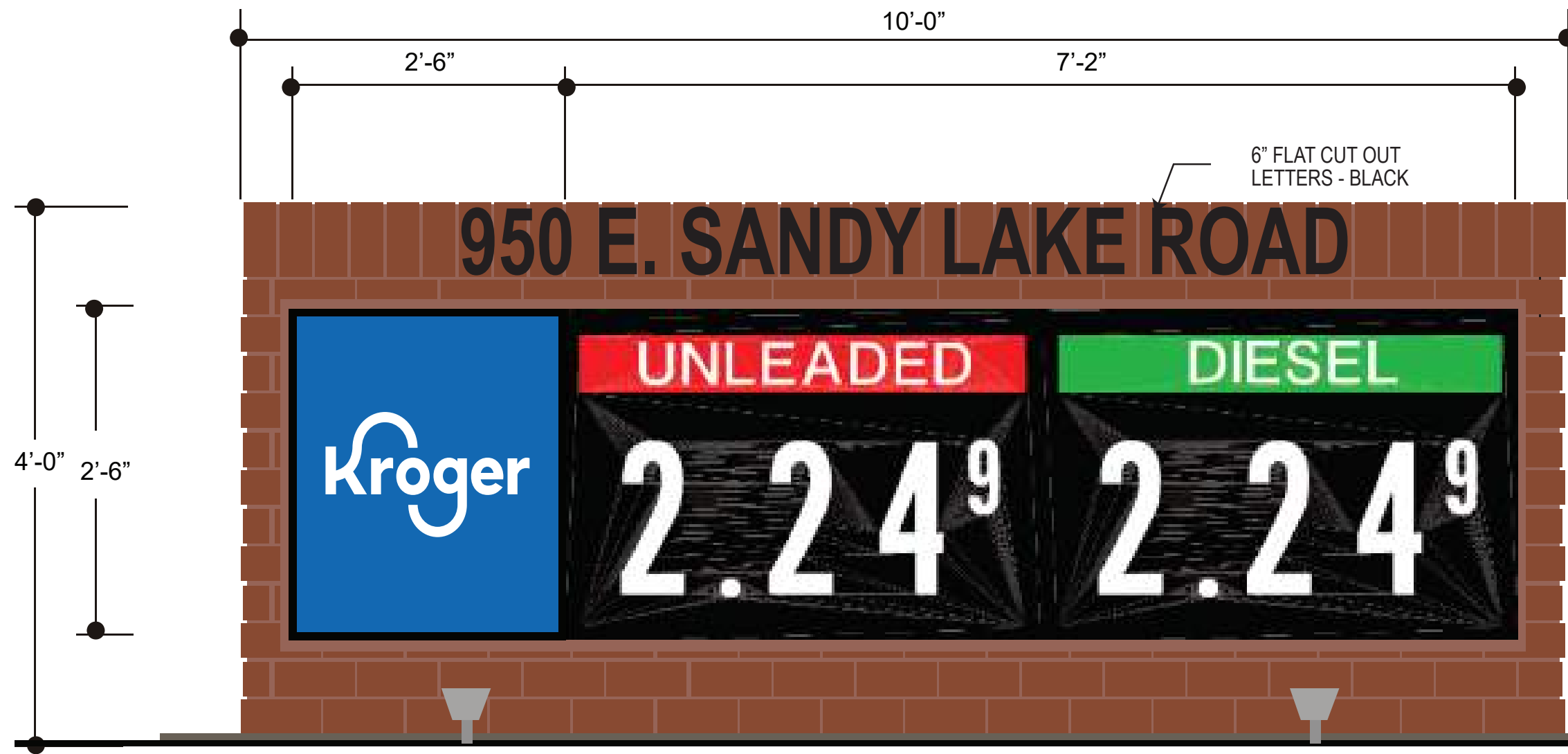
QTY.	DESCRIPTION	SQ. FT.
P 1	DOUBLE FACE MONUMENT SIGN	38.6



KROGER #448  
950 E. SANDY LAKE  
COPPELL, TX



P



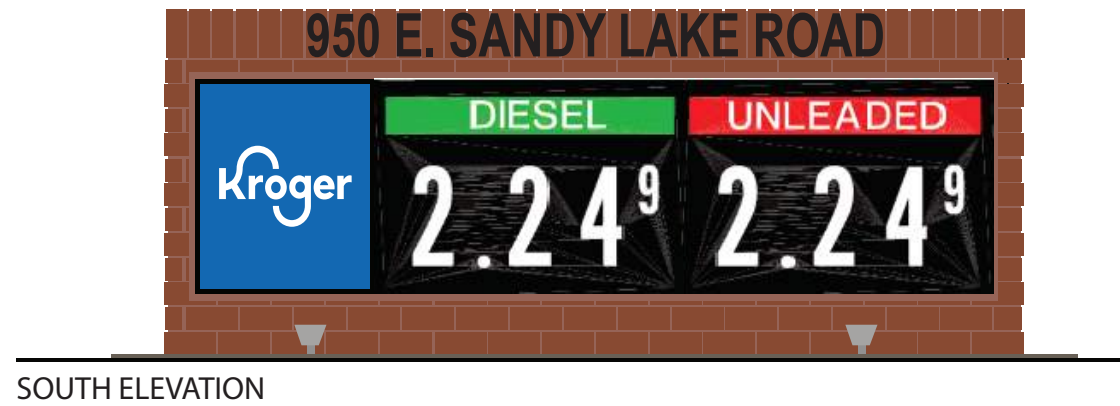
STREET SIDE  
NORTH ELEVATION

SCALE: 1" = 1'-0"

ALUMINUM CABINETS & RETAINERS  
PAINTED BLACK.  
FLAT POLYCARBONATE FACES DECORATED  
WITH FLAT, 1ST SURFACE VINYL GRAPHICS.

3730-8537 KROGER BLUE

- STANDARD 2'-6" X 7'-2"  
SKYLINE SCROLLING PRICE SIGN.  
14" DIGIT.
- BRICK MOUNMENT SURROUND  
TO MATCH LIKE-TYPE SIGNS  
CURRENTLY ON PROPERTY.  
GARNET RED BICK VENEER AND MOTAR  
TO MATCH BUILDING.
- SIGN IS EXTERNALLY ILLUMINATED -  
UPLIGHTING - SPEC. T.B.D.



38.6 SQ. FT.

KROGER #448  
950 E. SANDY LAKE  
COPPELL, TX



THIS IS AN ORIGINAL UNPUBLISHED DRAWING CREATED FOR YOUR PERSONAL USE IN CONNECTION WITH A PROJECT PLANNED FOR YOU BY CUMMINGS. IT IS NOT TO BE SHOWN OUTSIDE YOUR ORGANIZATION NOR USED, REPRODUCED, COPIED, OR EXHIBITED IN ANY FASHION UNLESS AUTHORIZED IN WRITING BY AN OFFICER OF CUMMINGS SIGNS.

CUSTOMER APPROVAL:

DATE:

	DATE	BY
Rev. #1		
Rev. #2		
Rev. #3		

	DATE	BY
Rev. #4		
Rev. #5		
Rev. #6		



DRAWING NO:  
983237720.06

DATE: 05.04.2023  
S. HAWKE

THIS DESIGN REMAINS OUR EXCLUSIVE PROPERTY AND CANNOT BE DUPLICATED WITHOUT WRITTEN CONSENT