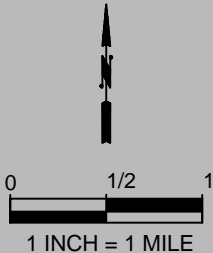
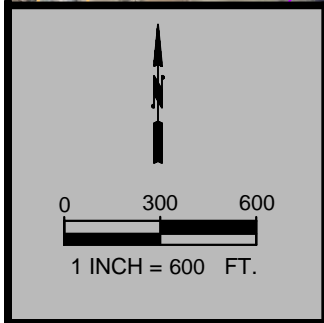
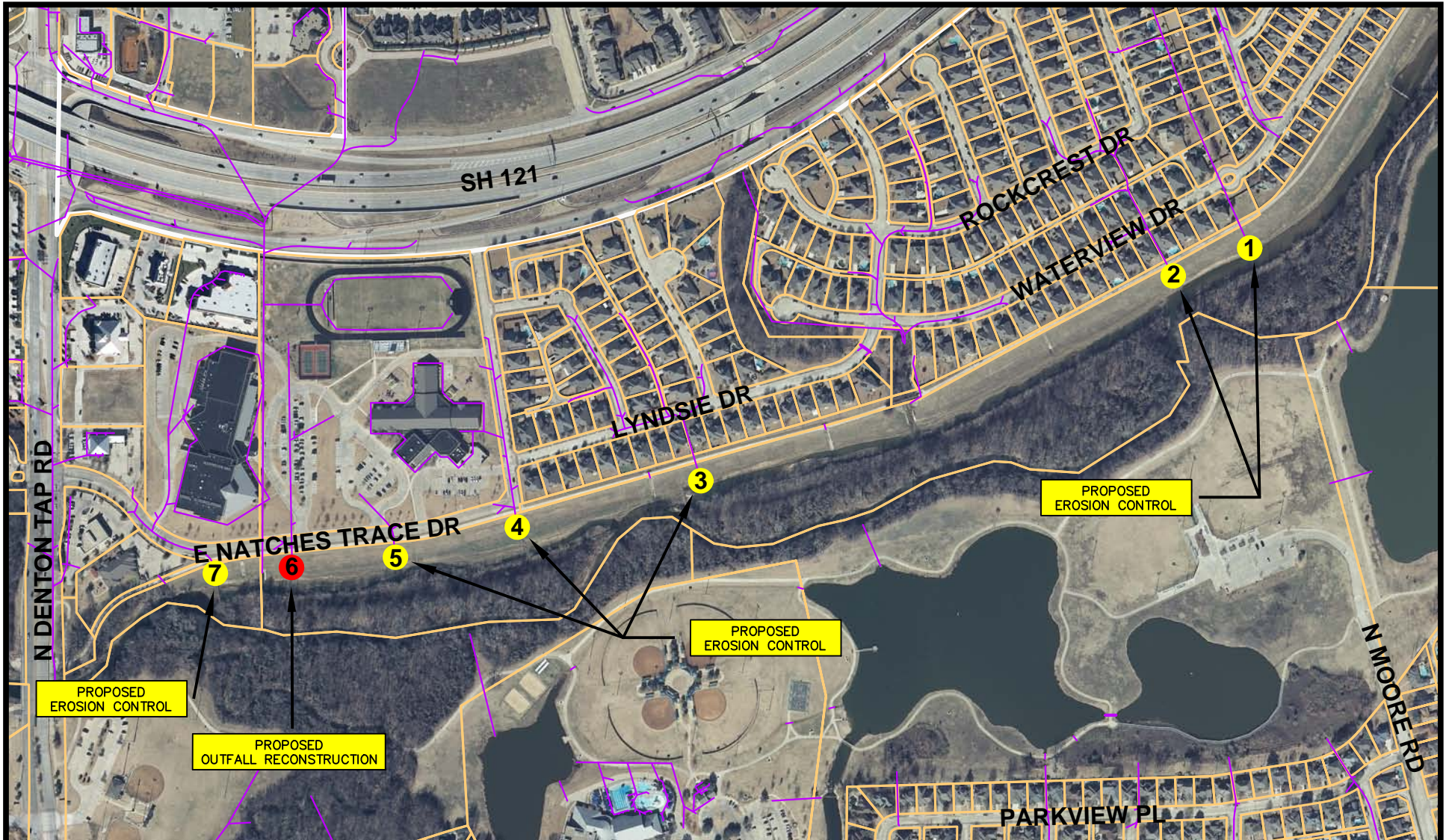




AREA REFERENCED BY EXHIBIT

INTERLOCAL AGREEMENT BETWEEN
 CITY OF COPPELL AND
 DENTON COUNTY LEVEE IMPROVEMENT
 DISTRICT NO.1
 FOR OUTFALL EROSION PROTECTION





●
 AREA OF PROPOSED
 OUTFALL RECONSTRUCTION

●
 AREA OF PROPOSED
 OUTFALL EROSION PROTECTION

INTERLOCAL AGREEMENT BETWEEN
 CITY OF COPPELL AND
 DENTON COUNTY LEVEE IMPROVEMENT
 DISTRICT NO. 1
 FOR OUTFALL EROSION PROTECTION



Created on: 1 May 2013 by Kevin Rubalcaba
 W:\GIS\Projects\Exhibit Location Maps\ACAD\2013 EXHIBITS.dwg

2/2
 Created in AutoCAD 2012