

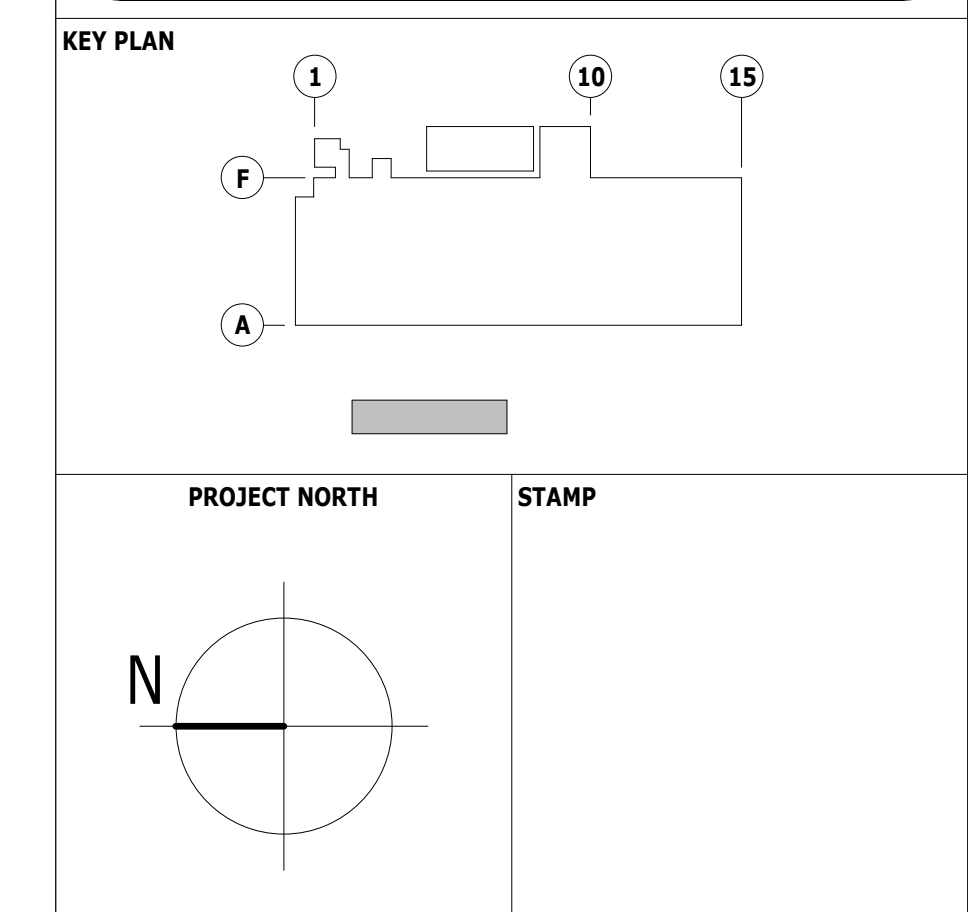
3 CONTAINMENT PIT
SCALE: 1/8" = 1'-0"

CONSTRUCTION LEGEND	
	NEW CONSTRUCTION
	EXISTING CONSTRUCTION
	EXISTING DOOR TO REMAIN
	NEW DOOR. ALL DOORS 6" FROM NEAREST ADJACENT WALL FROM HINGE SIDE U.O.N
	CATWALK
	FREE STANDING EMERGENCY SAFETY SHOWER/EYEWASH STATION
	MATCH/SECTOR LINE
	1 HOUR FIRE BARRIER
	2 HOUR FIRE BARRIER
	LOW WALL AIR RETURN
	BOLLARD
	CR CARD READER
	OA AUTO OPERATOR
	FE-1 STAINLESS STEEL FIRE EXTINGUISHER CABINET, FULLY RECESSED
	FE-2 FIRE EXTINGUISHER, WALL HOOK
	FE-3 FIRE RATED FIRE EXTINGUISHER CABINET, FULLY RECESSED
	EE EMERGENCY EXIT DOOR
	FLOOR TRENCH. SEE PLUMBING & FIRE PROTECTION DRAWINGS
	FLOOR DRAIN. SEE PLUMBING & FIRE PROTECTION DRAWINGS

GENERAL NOTES	
1.	REFER TO SHEET ZSPTX-G-0002 FOR GENERAL NOTES, SYMBOLS, AND ABBREVIATIONS.
2.	VERIFY IN FIELD ALL COLUMNS DIMENSIONS. COLUMN ENCLOSURES TO BE HELD TIGHT AGAINST FIRE-PROOFED COLUMNS.
3.	ALL EXPOSED/VISIBLE EXISTING CABLE RELATED TO ANY AND ALL SERVICES NOT LIMITED TO MECHANICAL, ELECTRICAL, DATA, SECURITY, FIRE ALARM, PLUMBING TO BE NEATLY ORGANIZED BY CONTRACTOR.
4.	CONTRACTOR REQUIRES ARCHITECTS APPROVAL AND SIGN OFF ON MOCK UP AT ANY AN ALL AREAS WHERE THIS CONDITION EXISTS.
5.	CONTRACTOR IS RESPONSIBLE FOR REPAIRING ANY DAMAGE TO RATED PARTITIONS AS A RESULT OF THIS WORK. THE INTEGRITY OF ALL RATED PARTITIONS IS TO BE MAINTAINED DURING CONSTRUCTION.
6.	ALL DOORS TO BE OFFSET 6" FROM ADJACENT PARTITION.
7.	LOW WALL AIR RETURNS SIZES AND LOCATIONS TO BE COORDINATED WITH MECHANICAL DRAWINGS.
8.	PROVIDE EQUIPMENT PAD IN UTILITY ROOMS.
9.	COORDINATE PAD SIZES AND LOCATIONS WITH ELECTRICAL AND PLUMBING MECHANICAL AND PROCESS DRAWINGS FOR REQUIRED EQUIPMENT. PAD SIZES AND LOCATIONS TO BE DEPENDENT ON FINAL SELECTION OF EQUIPMENT.

PROGRESS PRINT	
MAY BE INCOMPLETE	
PLOT BY:	DATE:
PERCENT COMPLETE: 80	DATE:
REVIEWED BY:	DATE:
CHECKED WITH COMMENTS:	<input type="checkbox"/>
CHECKED WITH NO COMMENTS:	<input type="checkbox"/>

NOT FOR CONSTRUCTION
CONFIDENTIAL

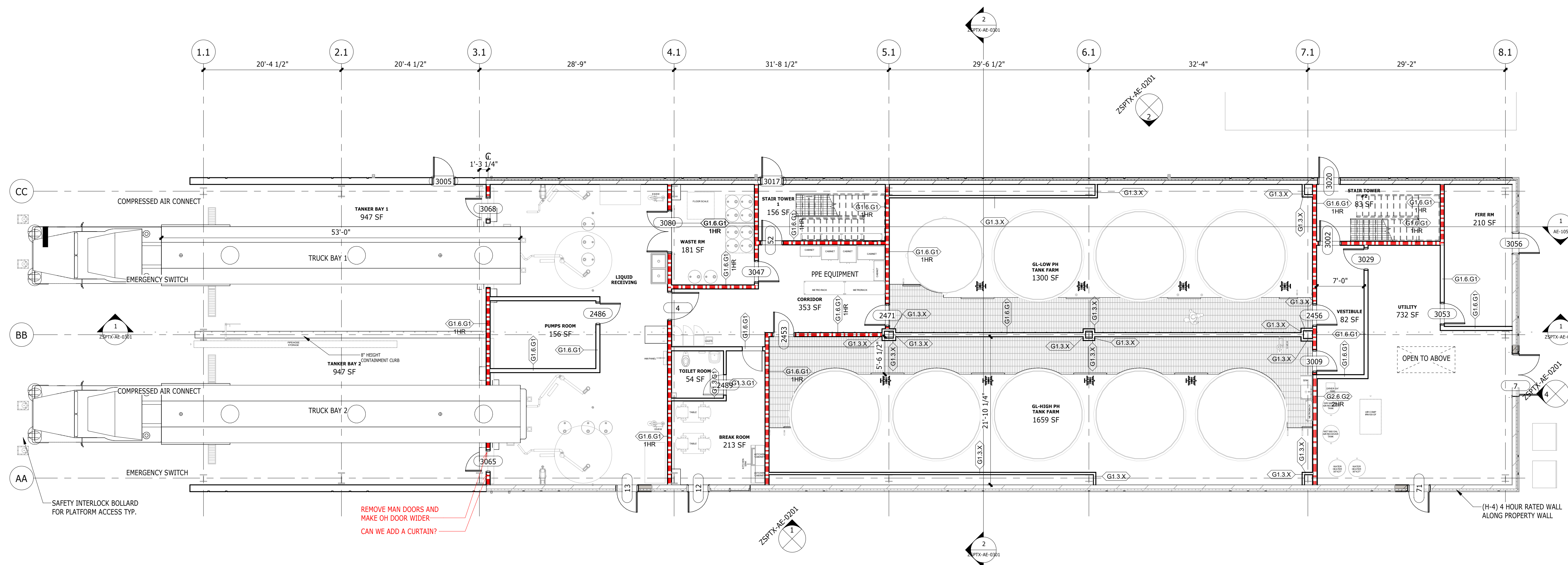


REV	DATE	DESCRIPTION	AMT	REVZ	PJM
C	04AUG23	ISSUED FOR BOD			PJM
B	14APR23	RE-ISSUED FOR CONCEPT DESIGN	CD	MVZ	PJM
A	24MAR23	ISSUED FOR CONCEPT DESIGN	AMT	MVZ	PJM

STATUS: ISSUED FOR BOD

CLIENT
AstraZeneca

PROJECT: ASTRAZENECA - TANK FARM
TITLE: CONTAINMENT PIT CONSTRUCTION FLOOR PLAN
PROJECT NO. D22BP111 SCALE: 1/8" = 1'-0" CLIENT NO.
DRAWING NO. ZSPTX-AE-0101 REV C



1 LEVEL 01 - CONSTRUCTION FLOOR PLAN
SCALE: 1/8" = 1'-0"

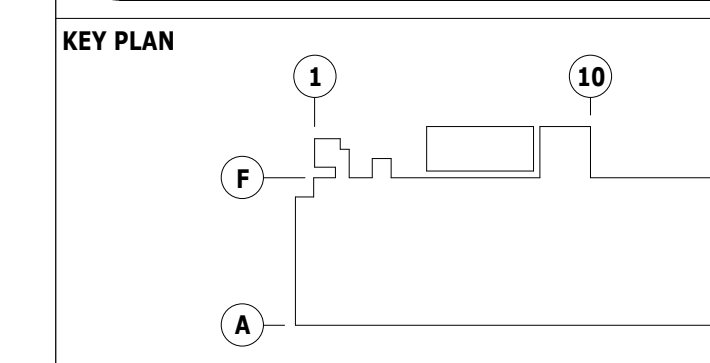
REMOVE MAN DOORS AND MAKE OH DOOR WIDER
CAN WE ADD A CURTAIN?

CONSTRUCTION LEGEND	
	NEW CONSTRUCTION
	EXISTING CONSTRUCTION
	EXISTING DOOR TO REMAIN
	NEW DOOR. ALL DOORS 6" FROM NEAREST ADJACENT WALL FROM HINGE SIDE U.O.N
	CATWALK
	FREE STANDING EMERGENCY SAFETY SHOWER/EYEWASH STATION
	MATCH/SECTOR LINE
	1 HOUR FIRE BARRIER
	2 HOUR FIRE BARRIER
	LOW WALL AIR RETURN
	BOLLARD
	CARD READER
	AUTO OPERATOR
	STAINLESS STEEL FIRE EXTINGUISHER CABINET, FULLY RECESSED
	FIRE EXTINGUISHER, WALL HOOK
	FIRE RATED FIRE EXTINGUISHER CABINET, FULLY RECESSED
	EMERGENCY EXIT DOOR
	FLOOR TRENCH. SEE PLUMBING & FIRE PROTECTION DRAWINGS
	FLOOR DRAIN. SEE PLUMBING & FIRE PROTECTION DRAWINGS

- GENERAL NOTES**
- REFER TO SHEET ZSPTX-G-0002 FOR GENERAL NOTES, SYMBOLS, AND ABBREVIATIONS.
 - VERIFY IN FIELD ALL COLUMNS DIMENSIONS. COLUMN ENCLOSURES TO BE HELD TIGHT AGAINST FIRE-PROOFED COLUMNS.
 - ALL EXPOSED/VISIBLE EXISTING CABLE RELATED TO ANY AND ALL SERVICES NOT LIMITED TO MECHANICAL, ELECTRICAL, DATA, SECURITY, FIRE ALARM, PLUMBING TO BE NEATLY ORGANIZED BY CONTRACTOR.
 - CONTRACTOR REQUIRES ARCHITECTS APPROVAL AND SIGN OFF ON MOCK UP AT ANY AN ALL AREAS WHERE THIS CONDITION EXISTS.
 - CONTRACTOR IS RESPONSIBLE FOR REPAIRING ANY DAMAGE TO RATED PARTITIONS AS A RESULT OF THIS WORK. THE INTEGRITY OF ALL RATED PARTITIONS IS TO BE MAINTAINED DURING CONSTRUCTION.
 - ALL DOORS TO BE OFFSET 6" FROM ADJACENT PARTITION.
 - LOW WALL AIR RETURNS SIZES AND LOCATIONS TO BE COORDINATED WITH MECHANICAL DRAWINGS.
 - PROVIDE EQUIPMENT PAD IN UTILITY ROOMS.
 - COORDINATE PAD SIZES AND LOCATIONS WITH ELECTRICAL AND PLUMBING MECHANICAL AND PROCESS DRAWINGS FOR REQUIRED EQUIPMENT. PAD SIZES AND LOCATIONS TO BE DEPENDENT ON FINAL SELECTION OF EQUIPMENT.

NOT FOR CONSTRUCTION

CONFIDENTIAL



STAMP				

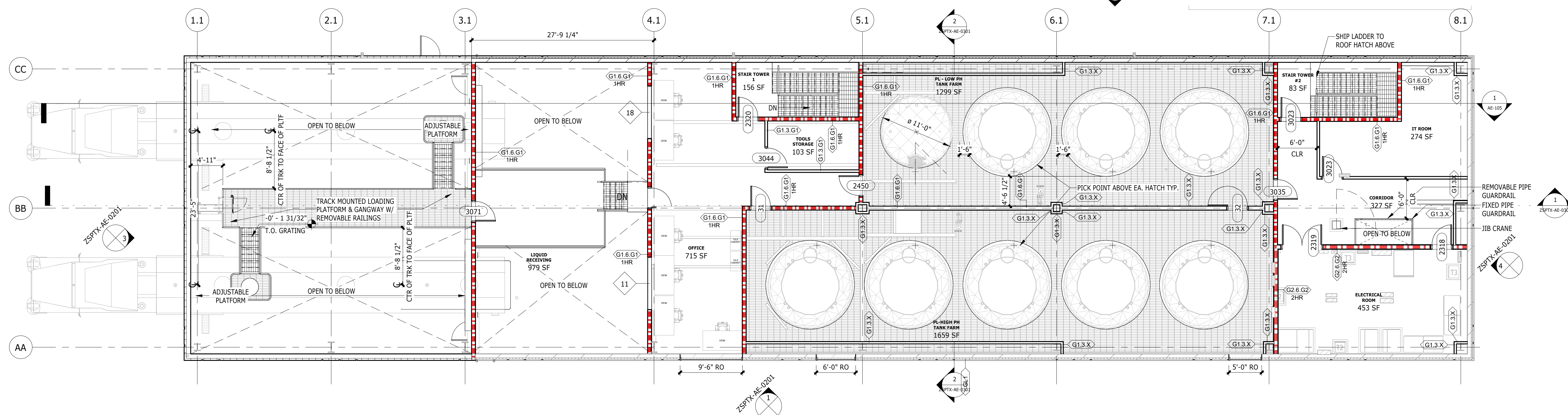
REV	DATE	DESCRIPTION	DSR	CHKD	APPR

CLIENT

PROJECT: **ASTRAZENECA - TANK FARM**

TITLE: **LEVEL 01 - CONSTRUCTION FLOOR PLAN**

PROJECT NO. D22BP111	SCALE 1/8" = 1'-0"	CLIENT NO.
DRAWING NO. ZSPTX-AE-0102		REV



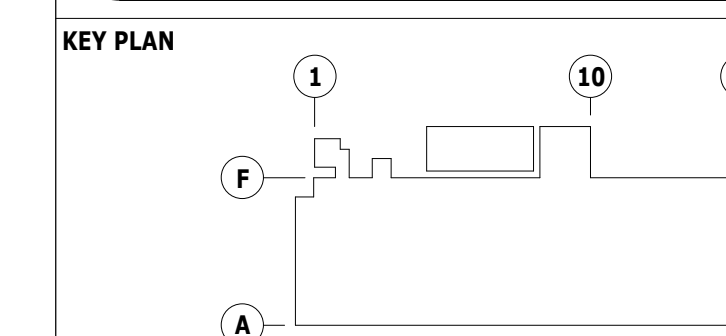
1 LEVEL 2 FLOOR PLAN
SCALE: 1/8" = 1'-0"

CONSTRUCTION LEGEND	
	NEW CONSTRUCTION
	EXISTING CONSTRUCTION
	EXISTING DOOR TO REMAIN
	NEW DOOR. ALL DOORS 6" FROM NEAREST ADJACENT WALL FROM HINGE SIDE U.O.N
	CATWALK
	FREE STANDING EMERGENCY SAFETY SHOWER/EYEWASH STATION
	MATCH/SECTOR LINE
	1 HOUR FIRE BARRIER
	2 HOUR FIRE BARRIER
	LOW WALL AIR RETURN
	BOLLARD
	CARD READER
	AUTO OPERATOR
	FE-1 STAINLESS STEEL FIRE EXTINGUISHER CABINET, FULLY RECESSED
	FE-2 FIRE EXTINGUISHER, WALL HOOK
	FE-3 FIRE RATED FIRE EXTINGUISHER CABINET, FULLY RECESSED
	EE EMERGENCY EXIT DOOR
	FLOOR TRENCH. SEE PLUMBING & FIRE PROTECTION DRAWINGS
	FLOOR DRAIN. SEE PLUMBING & FIRE PROTECTION DRAWINGS

- GENERAL NOTES**
- REFER TO SHEET ZSPTX-G-0002 FOR GENERAL NOTES, SYMBOLS, AND ABBREVIATIONS.
 - VERIFY IN FIELD ALL COLUMNS DIMENSIONS. COLUMN ENCLOSURES TO BE HELD TIGHT AGAINST FIRE-PROOFED COLUMNS.
 - ALL EXPOSED/VISIBLE EXISTING CABLE RELATED TO ANY AND ALL SERVICES NOT LIMITED TO MECHANICAL, ELECTRICAL, DATA, SECURITY, FIRE ALARM, PLUMBING TO BE NEATLY ORGANIZED BY CONTRACTOR.
 - CONTRACTOR REQUIRES ARCHITECTS APPROVAL AND SIGN OFF ON MOCK UP AT ANY AND ALL AREAS WHERE THIS CONDITION EXISTS.
 - CONTRACTOR IS RESPONSIBLE FOR REPAIRING ANY DAMAGE TO RATED PARTITIONS AS A RESULT OF THIS WORK. THE INTEGRITY OF ALL RATED PARTITIONS IS TO BE MAINTAINED DURING CONSTRUCTION.
 - ALL DOORS TO BE OFFSET 6" FROM ADJACENT PARTITION.
 - LOW WALL AIR RETURNS SIZES AND LOCATIONS TO BE COORDINATED WITH MECHANICAL DRAWINGS.
 - PROVIDE EQUIPMENT PAD IN UTILITY ROOMS.
 - COORDINATE PAD SIZES AND LOCATIONS WITH ELECTRICAL AND PLUMBING MECHANICAL AND PROCESS DRAWINGS FOR REQUIRED EQUIPMENT. PAD SIZES AND LOCATIONS TO BE DEPENDENT ON FINAL SELECTION OF EQUIPMENT.

NOT FOR CONSTRUCTION

CONFIDENTIAL



STAMP

REV	DATE	DESCRIPTION	DESR	CHKD	APPR

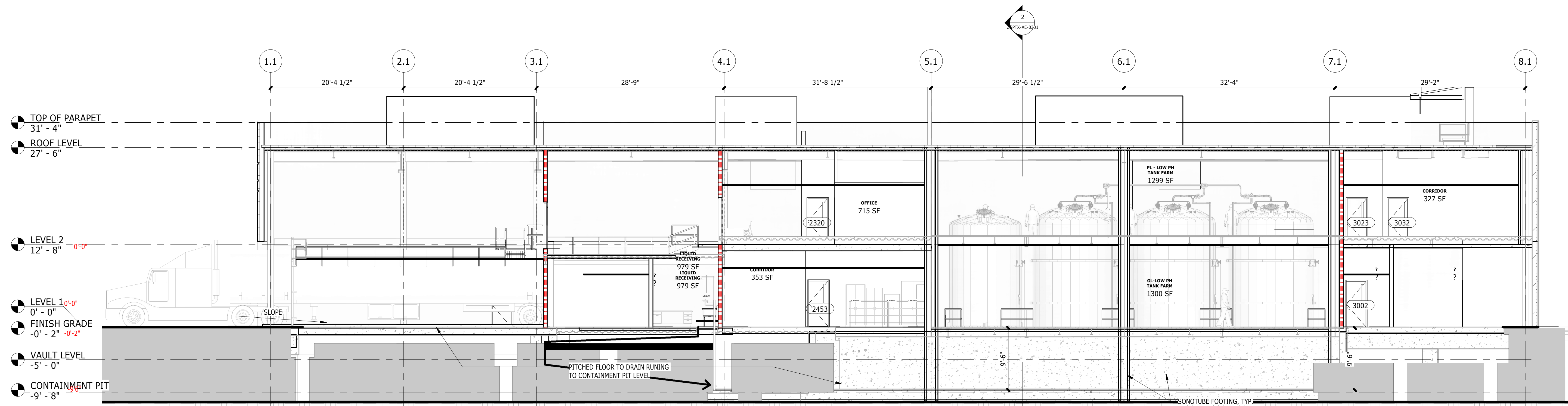
CLIENT
AstraZeneca

PROJECT
ASTRAZENECA - TANK FARM

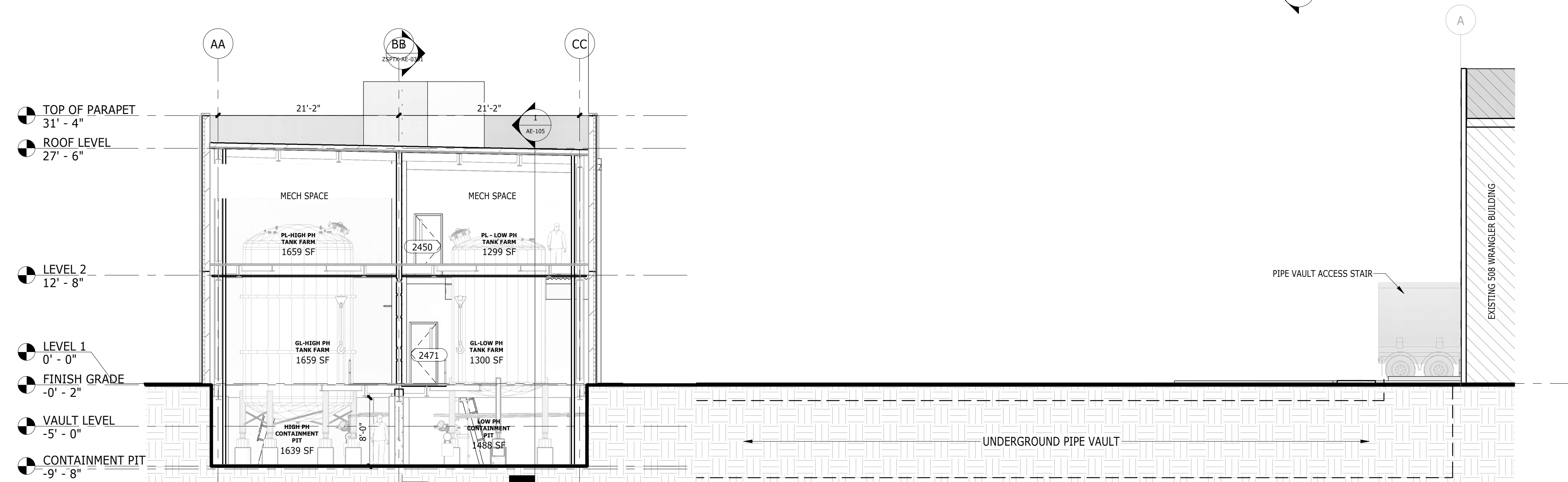
TITLE
LEVEL 02 - CONSTRUCTION FLOOR PLAN

PROJECT NO. D22BP111 SCALE 1/8" = 1'-0" CLIENT NO. REV

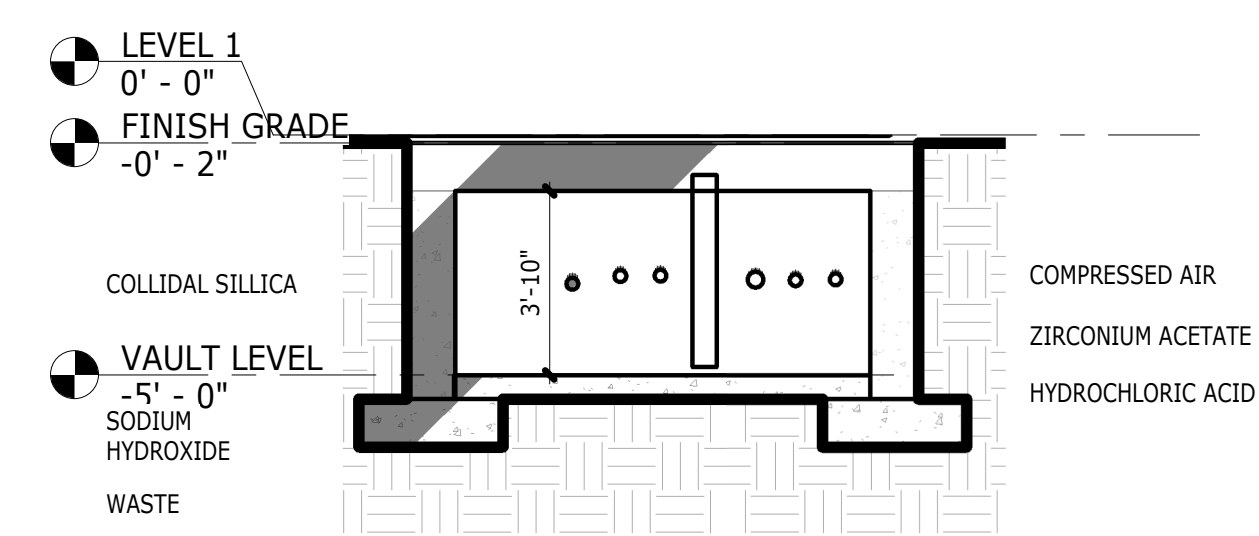
DRAWING NO. ZSPTX-AE-0103



1 SECTION - EAST
SCALE: 1/8" = 1'-0"



2 SITE SECTION - SOUTH
SCALE: 1/8" = 1'-0"



3 SECTION THRU PIPE VAULT CORRIDOR
SCALE: 1/4" = 1'-0"

PROGRESS PRINT

MAY BE INCOMPLETE

PLotted BY:	DATE:
PERCENT COMPLETE: 80	DATE:
REVIEWED BY:	DATE:
CHECKED WITH COMMENTS:	<input type="checkbox"/>
CHECKED WITH NO COMMENTS:	<input type="checkbox"/>

NOT FOR CONSTRUCTION

CONFIDENTIAL

STAMP

REV	DATE	DESCRIPTION	DESIGNED	CHECKED	APPROVED
C	04AUG23	ISSUED FOR BOD			PJM
B	14APR23	RE-ISSUED FOR CONCEPT DESIGN	CD	MVZ	PJM
A	24MAR23	ISSUED FOR CONCEPT DESIGN	AMT	MVZ	PJM

STATUS: ISSUED FOR BOD

CLIENT:

AstraZeneca

THIS DRAWING IS THE PROPERTY OF DPS AND SHALL BE USED ONLY FOR THE PURPOSE FOR WHICH IT WAS ISSUED. IT SHALL NOT BE COPIED, REPRODUCED OR OTHERWISE USED, AND SHALL BE KEPT UNDER LOCK AND KEY. NO PART OF THIS DRAWING IS TO BE REPRODUCED OR OTHERWISE USED, AND SHALL BE KEPT UNDER LOCK AND KEY. NO PART OF THIS DRAWING IS TO BE REPRODUCED OR OTHERWISE USED, AND SHALL BE KEPT UNDER LOCK AND KEY.

PROJECT: ASTRAZENECA - TANK FARM

TITLE: BUILDING SECTIONS

PROJECT NO. D22BP111	SCALE AS INDICATED	CLIENT NO.
DRAWING NO. ZSPTX-AE-0301		REV C