



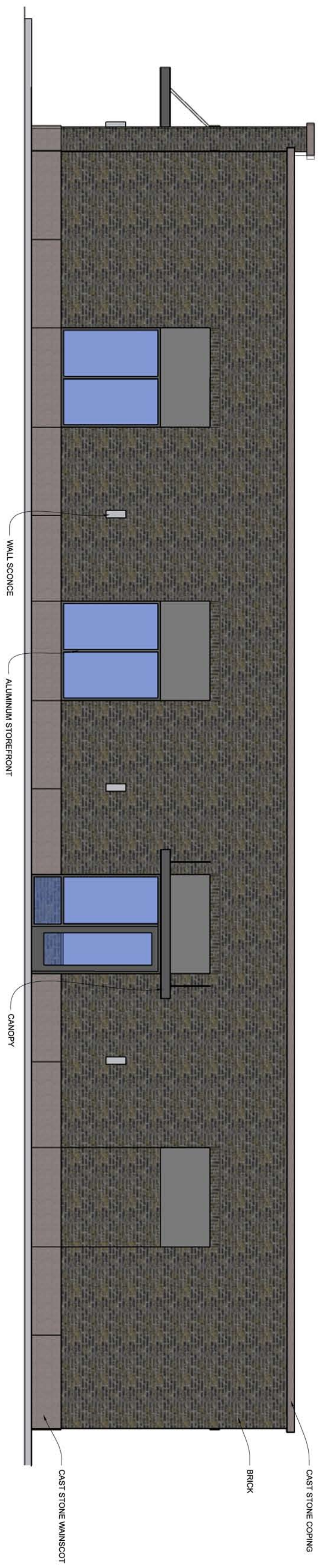
EAST ELEVATION
SCALE: 1/4" = 1'-0"

MATERIAL SPECIFICATIONS

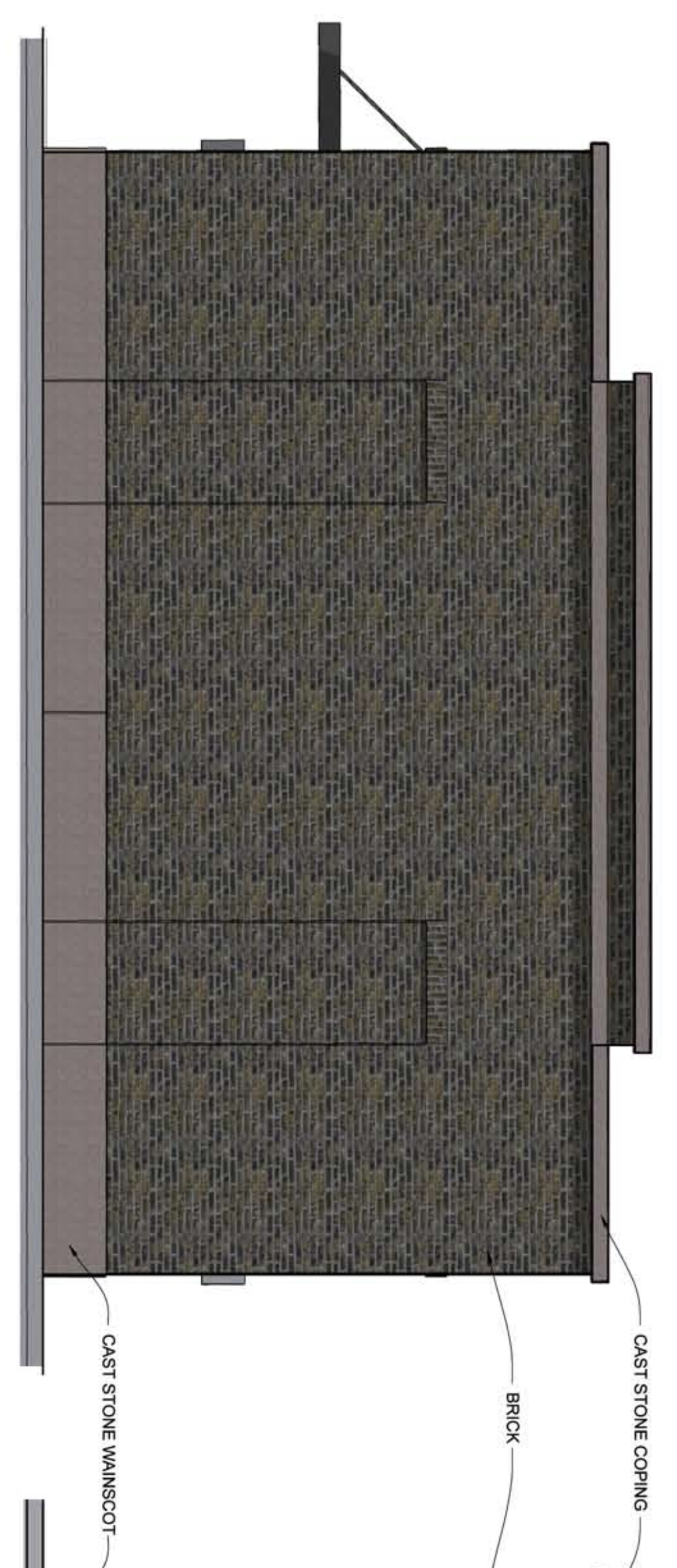
- BRICK - TRIANGLE BRICK, COLOR: JEFFERSON PARK
- CAST STONE - DALLAS CAST STONE, COLOR: GRAY LIMESTONE
- ALUMINUM STOREFRONT - KAMMEER, COLOR: DARK BRONZE
- STUCCO - BASF FINESTONE, COLOR: GRAY LIMESTONE

MASONRY PERCENTAGES
(EXCLUDING DOORS & WINDOWS)

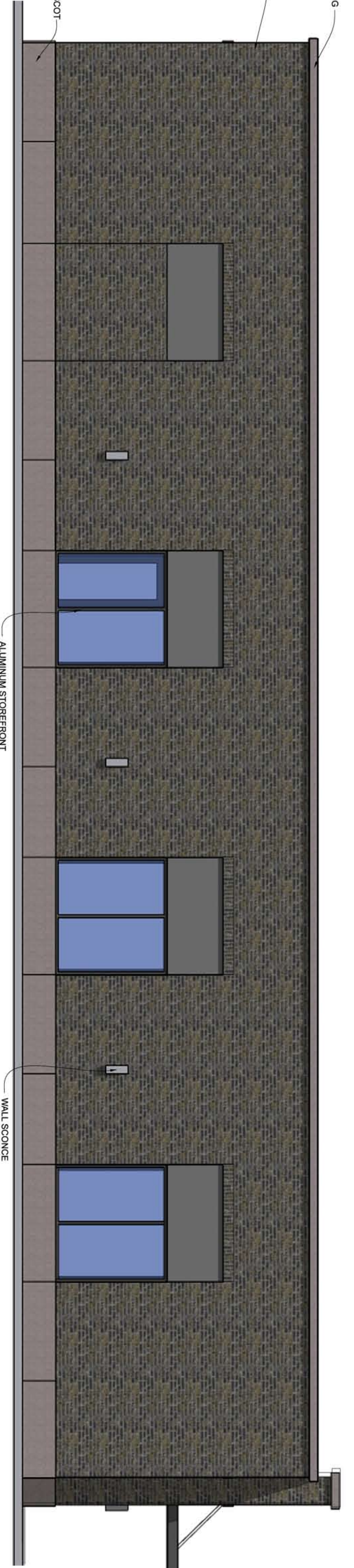
Direction	Total Area	Masonry Area	Percentage
EAST	422 sf	382 sf	90%
NORTH	1,380 sf	1,300 sf	94%
WEST	1,409 sf	1,320 sf	94%
SOUTH	620 sf	620 sf	100%



NORTH ELEVATION
SCALE: 1/4" = 1'-0"

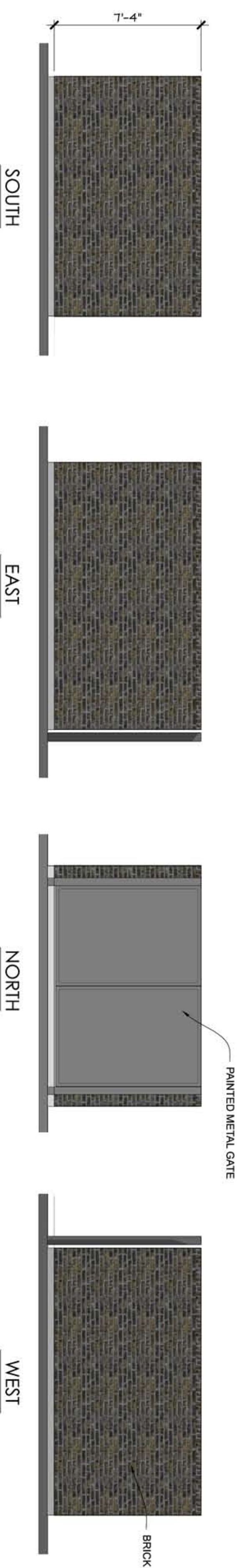


WEST ELEVATION
SCALE: 1/4" = 1'-0"



SOUTH ELEVATION
SCALE: 1/4" = 1'-0"

Proposed Building at
130 S Denton Tap Road
CORPELL, TEXAS 75019



DUMPSTER ENCLOSURE

SCALE: 1/4" = 1'-0"

ALL SIDES TO BE 100% MASONRY EXCEPT FOR THE GATE
BRICK - TRIANGLE BRICK, COLOR: JEFFERSON PARK

Proposed Building at
130 S Denton Tap Road
COPPELL, TEXAS 75019