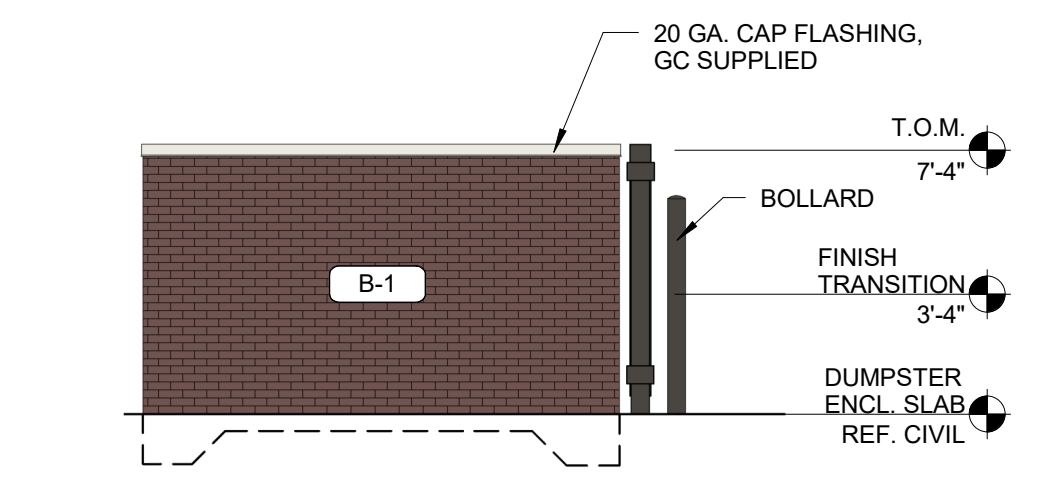
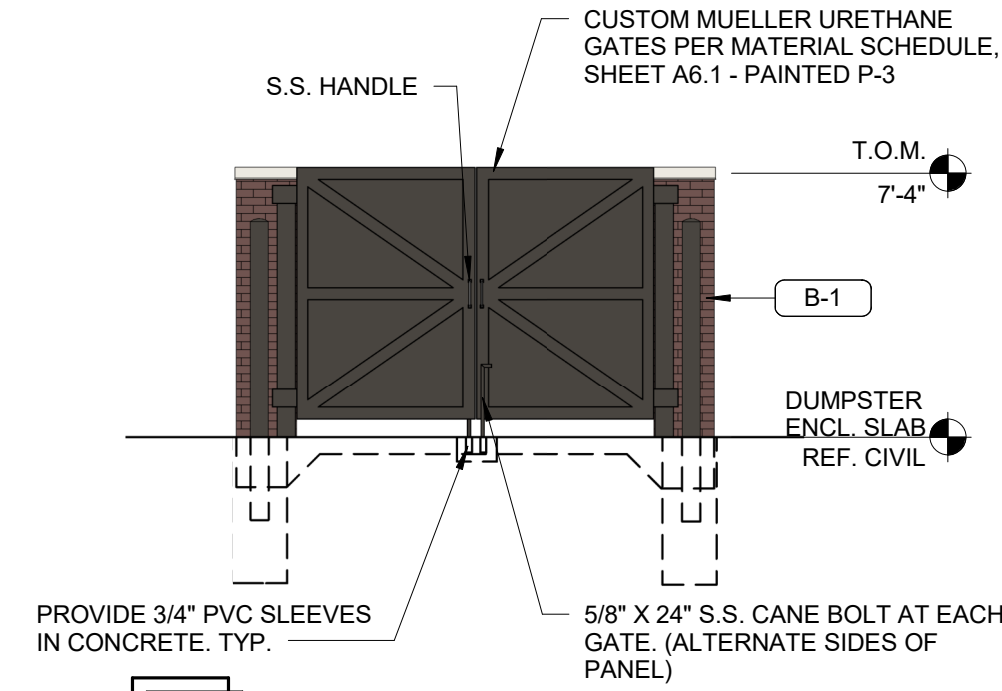


10/25/2018 8:18:41 AM

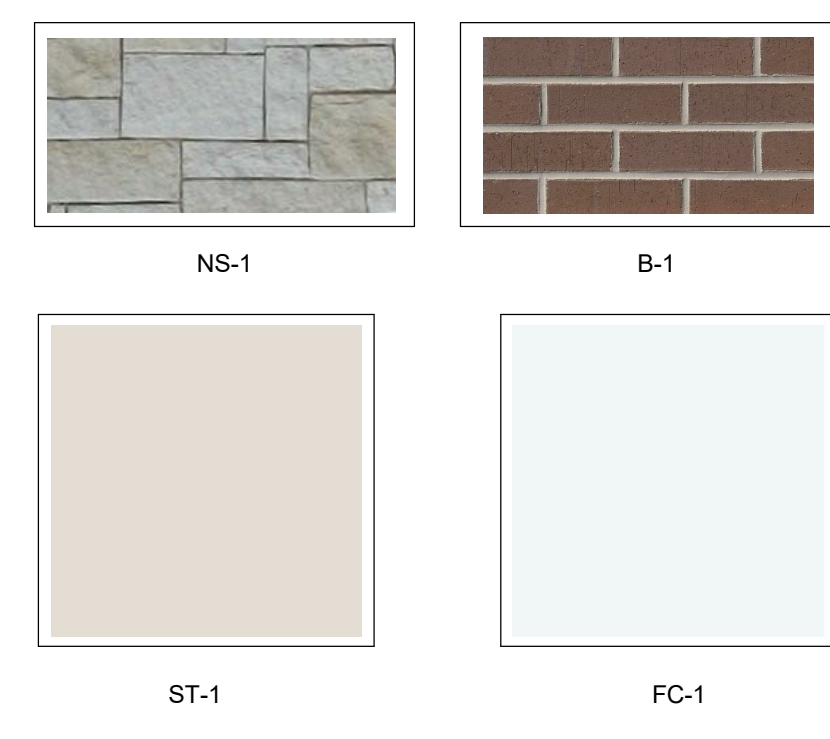
E
D
C
B
A



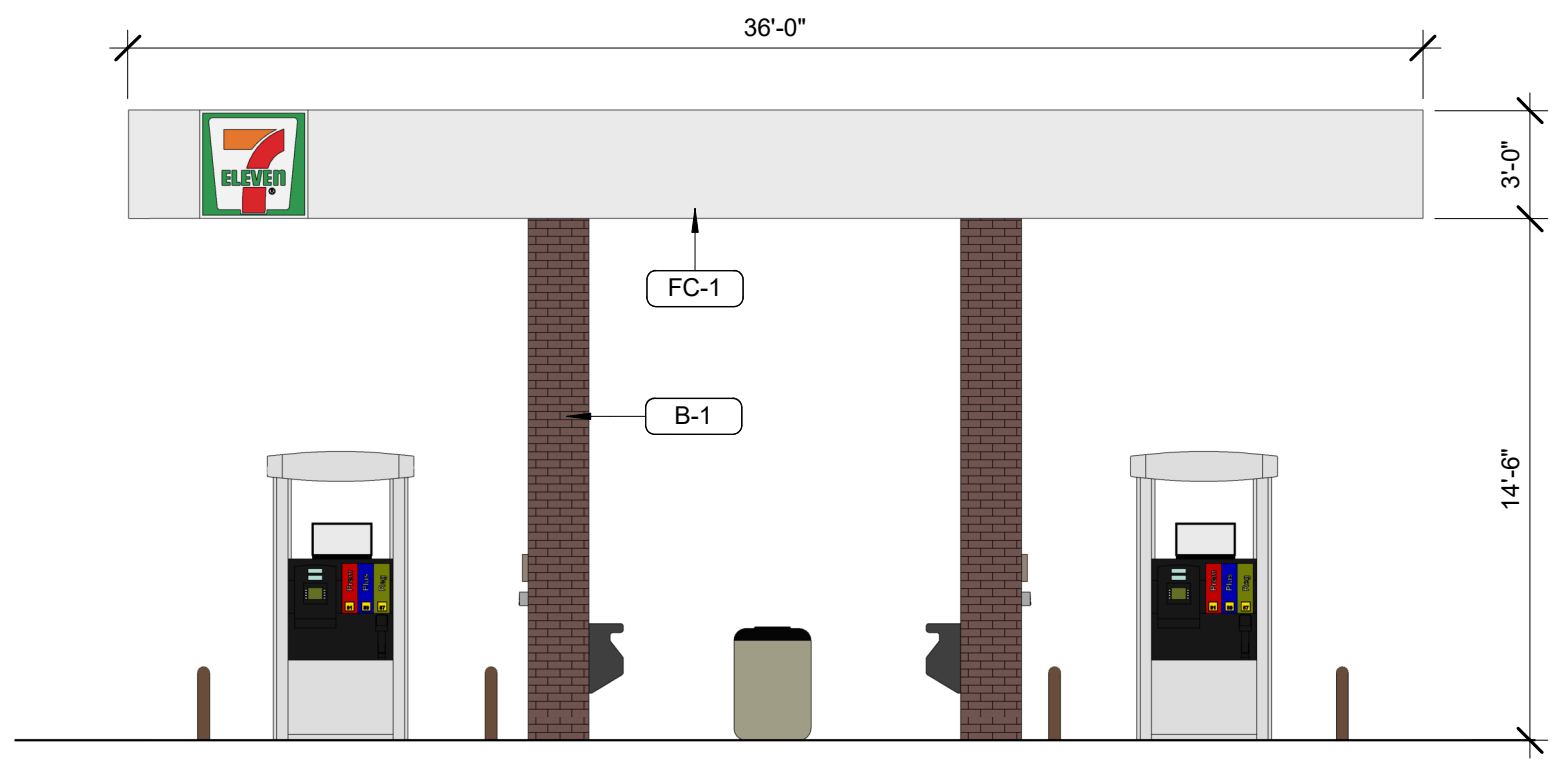
11 SIDE DUMPSTER ENCL. ELEVATION
3/16" = 1'-0"



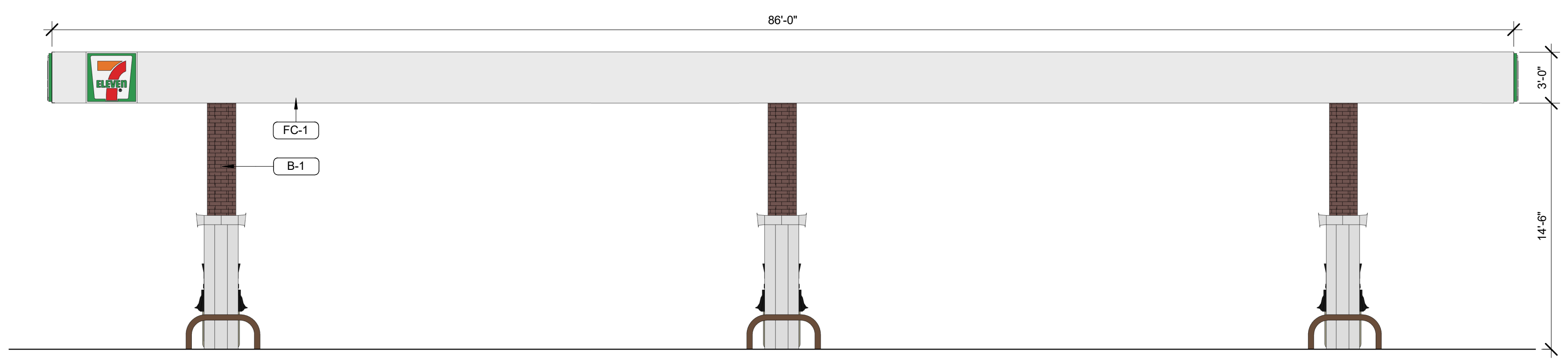
10 FRONT DUMPSTER ENCL. ELEVATION
3/16" = 1'-0"



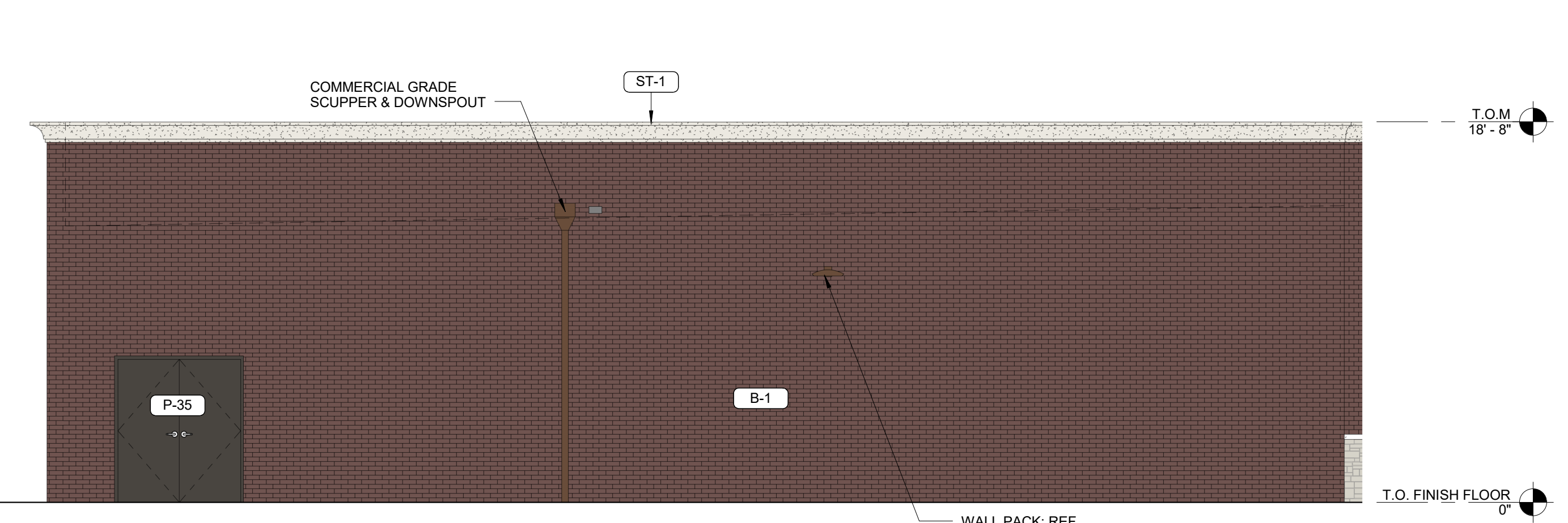
EXTERIOR MATERIALS SCHEDULE (NOT ALL MATERIALS IN SCHEDULE ARE USED)			
NO.	MATERIAL	MANUFACTURER	COLOR
B-1	BRICK	MERIDIAN	V180 MODULAR VELOUR
FC-1	ACM FUEL CANOPY FASCIA	REYNOBOND	EASTMAN WHITE (PY-25)
NS-1	NATURAL STONE	BLACKSON BRICK	AUSTIN - HANNA SPRINGS CHOPPED
ST-1	EXTERIOR PAINTED STUCCO	SHERWIN WILLIAMS	AESTHETIC WHITE SW 7035
P-3	EXTERIOR HM DOORS, FRAMES, TRASH ENCLOSURE GATE, GRAVEL GUARDS, AND LIGHT POLES	SHERWIN WILLIAMS	SEAL SKIN SW 7675
P-6	EXTERIOR BOLLARDS	SHERWIN WILLIAMS	SEAL SKIN SW 7675
S-1	ALUMINUM STOREFRONT GLAZING	KAWNEER	DARK BRONZE
C-1	PREFINISHED ALUMINUM CANOPY	MAPES LUMISHADE CANOPY	BRAINSTORM BRONZE ENAMEL
MR-1	MEMBRANE ROOFING	DUROLAST	WHITE



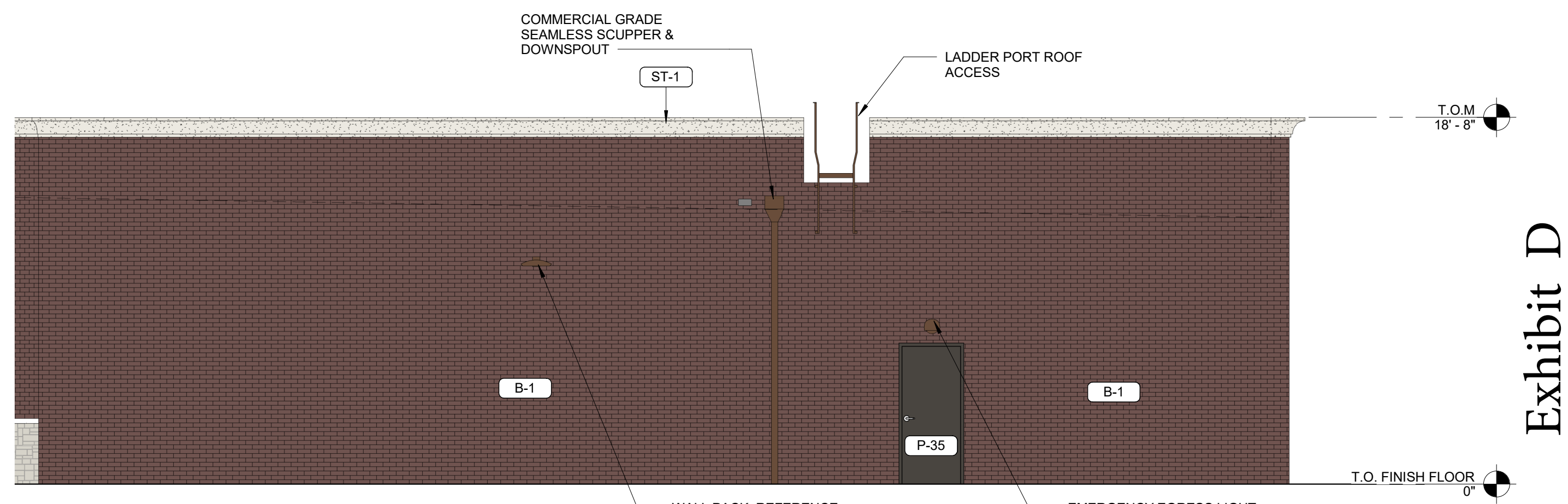
9 FUEL CANOPY SHORT
3/16" = 1'-0"



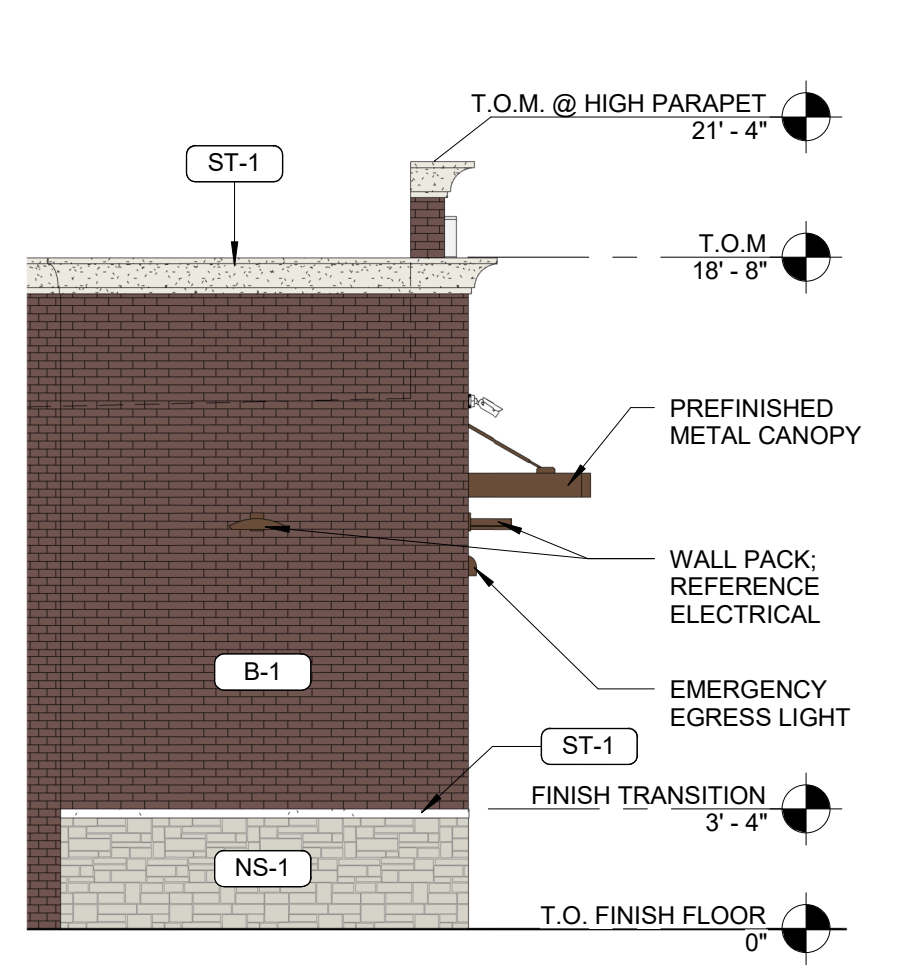
8 FUEL CANOPY - LONG
3/16" = 1'-0"



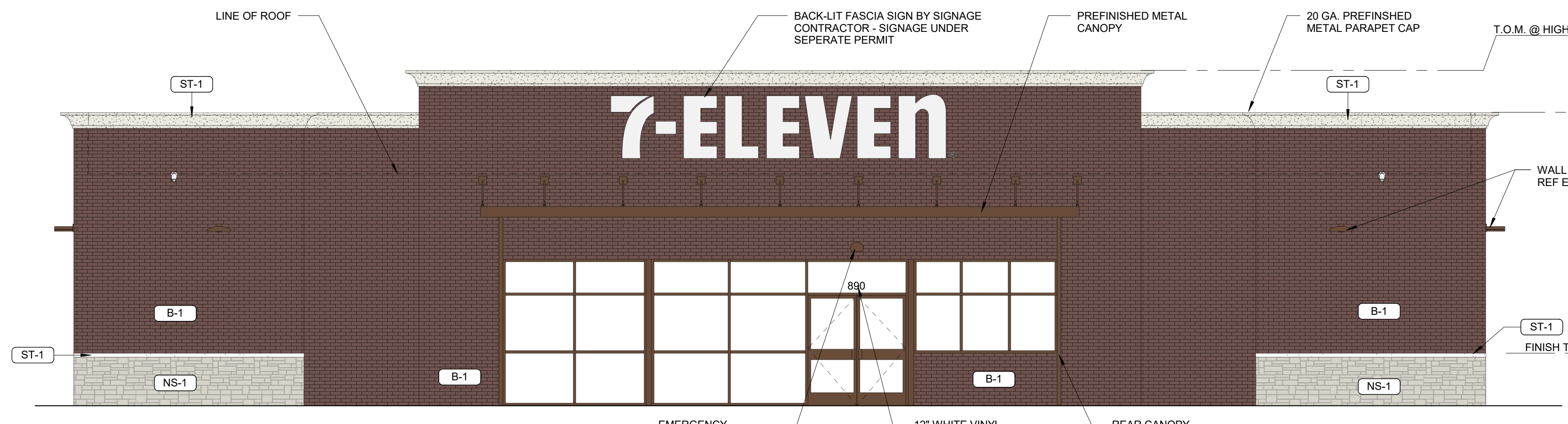
7 ELEVATION - LEFT REAR SIDE
3/16" = 1'-0"



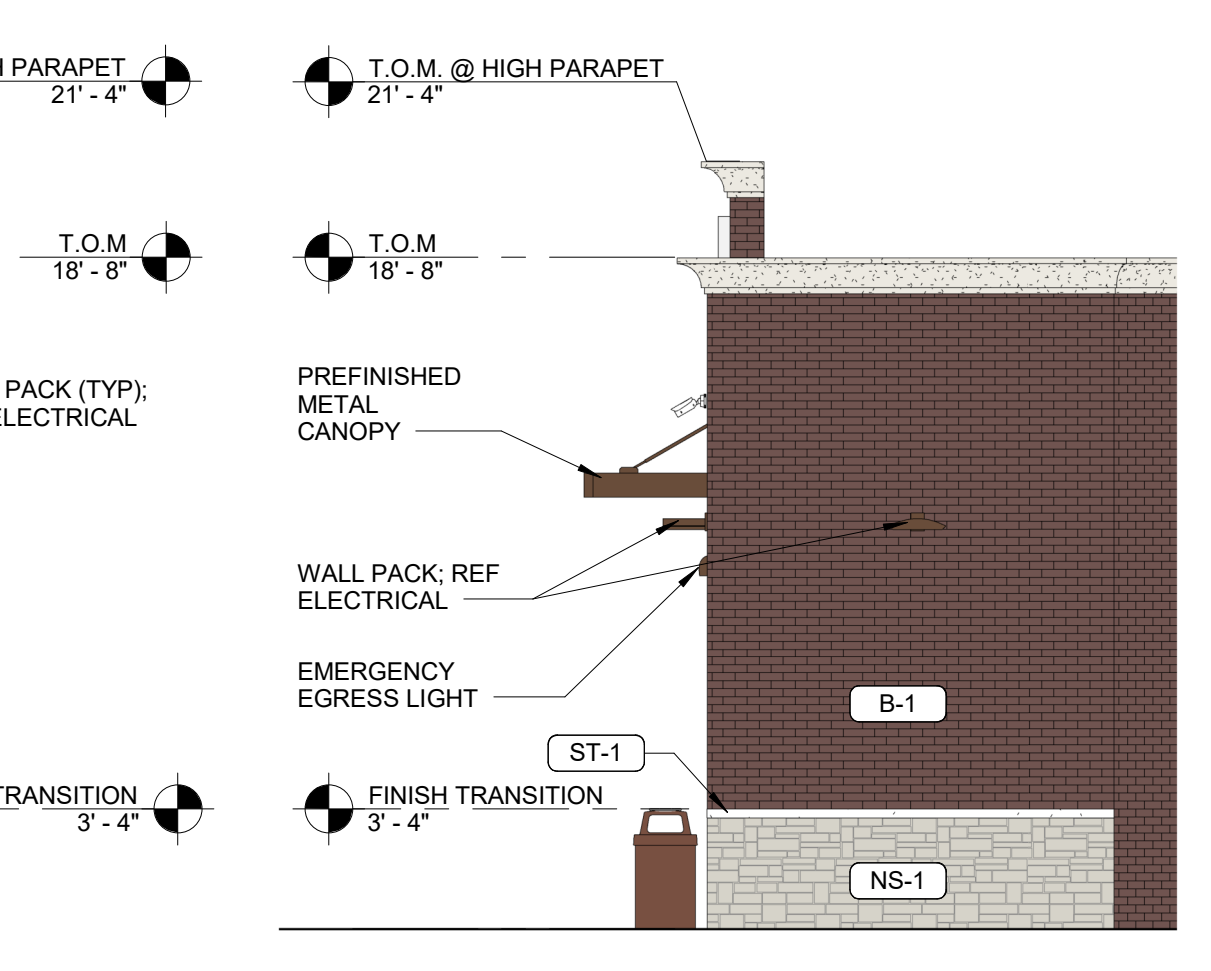
6 ELEVATION - RIGHT REAR
3/16" = 1'-0"



3 ELEVATION - LEFT SIDE
3/16" = 1'-0"



2 ELEVATION - FRONT
3/16" = 1'-0"



1 ELEVATION - RIGHT SIDE
3/16" = 1'-0"

Exhibit D

bates

502 SW A STREET, SUITE 2
BENTONVILLE, AR 72712
WWW.BATESARCHITECTS.COM
TEL: 479.633.8165

Florida Certificate of Authority #AA3609602

Copyright 2018 Bates & Associates, Architects
Drawings and Specifications as instruments of service are and shall remain the property of the Architect. They are not to be used on other projects or extensions to this project except by agreement in writing and with appropriate compensation to the Architect.

Contractor is responsible for confirming and coordinating dimensions at job site. The Architect will not be responsible for construction means, methods, techniques, sequences or procedures, or for safety precautions and programs in connection with the project.

STORE #:
1043547

CONSTRUCTION MANAGER
SCHAFER CONSTRUCTION
2601 NETWORK BLVD., STE. 413
FRISCO, TX 75034

TENANT
7-ELEVEN INC.
3200 HACKBERRY ROAD, IRVING, TX 75063

PROTO:04/30/2018

7-ELEVEN STORE
890 S. DENTON TAP RD.
COPPELL, TX 75019
SCHAFER CONSTRUCTION
2601 NETWORK BLVD., STE. 413
FRISCO, TX 75034

10/16/2018
Architect Name - RYAN M FAUST
Architect Number - AR97905

THE SEAL AND SIGNATURE APPLIES ONLY TO THE DOCUMENT TO WHICH THEY ARE AFFIXED AND WE EXPRESSLY DISCLAIM ANY RESPONSIBILITY FOR ALL OTHER PLANS, SPECIFICATIONS, ESTIMATES, REPORTS OR OTHER DOCUMENTS OR INSTRUMENTS RELATING TO OR INTENDED TO BE USED FOR ANY PART OR PARTS OF THE PROJECT.

REVISIONS
NO. DATE DESCRIPTION

PROJECT NUMBER: 18159
RELEASE DATE: 10/16/2018

REVIEW BOARD ELEVATIONS

RBE

C:\Users\Still\Documents\18159 COPPELL TX_A_R16_Kevin_Still.rvt