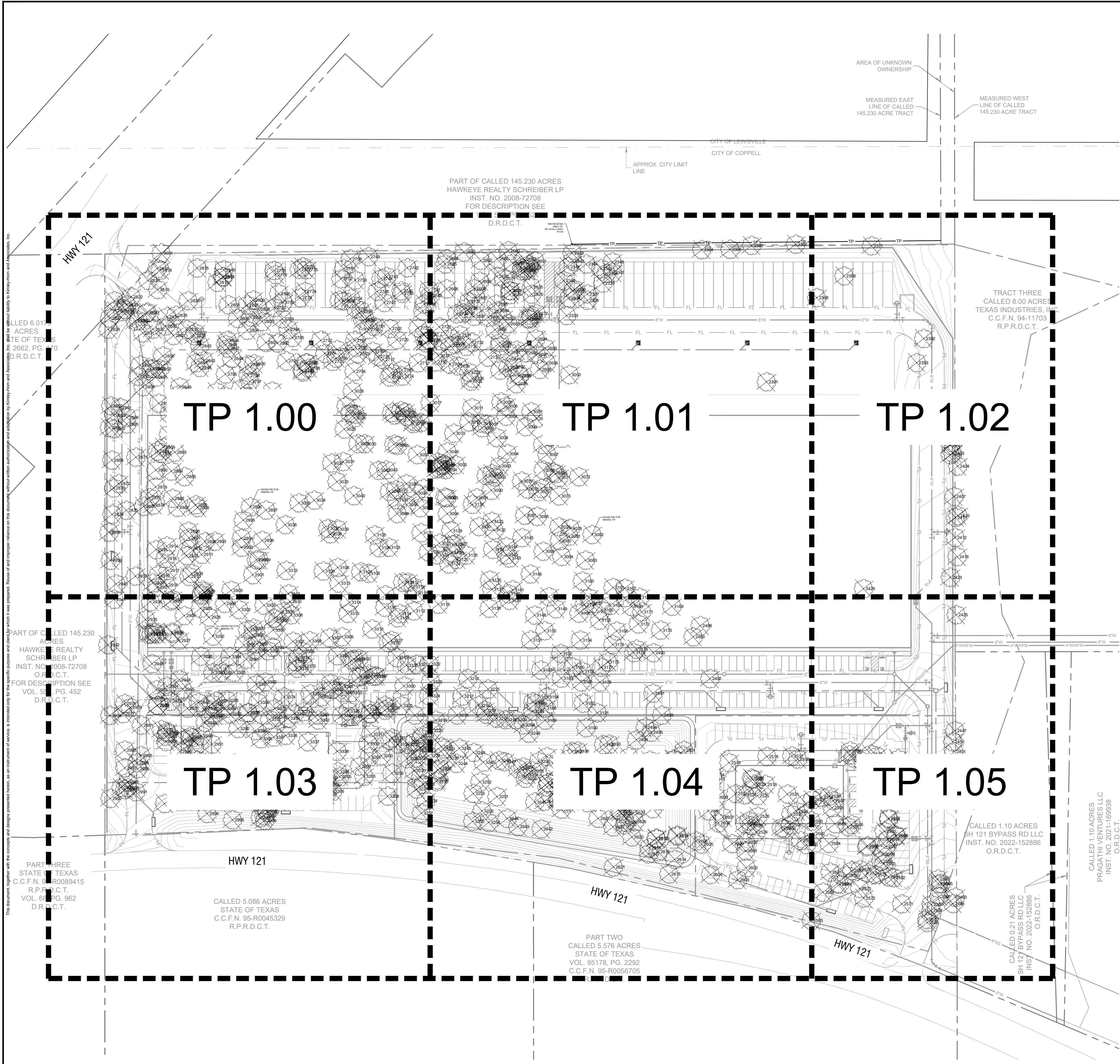


**LEGEND**

	XXXX	EXISTING TREE TO BE REMOVED
	XXXX	EXISTING TREE TO REMAIN
	TP	TREE PROTECTION FENCING

**NOTE:**  
TREES TO BE CLASSIFIED PER ARTICLE 34 - DIVISION 2



**DEVELOPER**  
LOVETT INDUSTRIAL, LLC  
127 HOWELL ST, DALLAS, TX 75207  
(602) 999-3716  
COLBY.EVERETT@LOVETTINDUSTRIAL.COM

**APPLICANT**  
KIMLEY-HORN AND ASSOCIATES, INC.  
10101 REUNION PLACE, SUITE 400,  
SAN ANTONIO, TX 78216  
(726) 610-3728  
BLAINE.MIKULIK@KIMLEY-HORN.COM

**LOVETT COPPELL BUSINESS PARK  
ZONED HC / REZONED PD-LI , 17.6949 AC  
LOTS 1, 2 & 3  
ALTA/NSPS LAND TITLE SURVEY  
P. HARMONSON SURVEY  
ABSTRACT NO. 604  
CITY OF COPPELL  
DENTON COUNTY, TEXAS  
AUGUST 2023**

No.	REVISIONS	DATE

**Kimley & Horn**  
2800 N CENTRAL EXPRESSWAY, SUITE 400,  
RICHARDSON, TX 75080  
PHONE: 972-770-1300 FAX: 972-239-3820  
WWW.KIMLEY-HORN.COM TX F-928  
© 2023 KIMLEY-HORN AND ASSOCIATES, INC.

**Kimley & Horn**  
FOR REVIEW ONLY  
Not for construction or permit purposes.  
R.L.A. BLAINE D. MIKULIK  
I.A. No. 3488 DATE: 10/12/2023

KHA PROJECT	064922668
DATE	OCTOBER 2023
SCALE	AS SHOWN
DESIGNED BY	LC
DRAWN BY	LC
CHECKED BY	BDW

**LOVETT COPPELL**  
PREPARED FOR  
**LOVETT INDUSTRIAL**  
COPPELL, TEXAS

**OVERALL TREE  
PRESERVATION PLAN (NO  
EXEMPTION)**  
SHEET NUMBER  
**TP 0.00**

IMAGES: LovettIndustrialCoppell121\_Visit\_Ridge\_EK : rlfm : Option 1 : sldby : mstrange : mba : sldbm : xhwar : sldbm : LA  
 XREFS: CHANGELIST LIBRARY: 10/12/2023 2:29 PM  
 PLOTTED BY: CHANGELIST LIBRARY: 10/12/2023 2:29 PM  
 PLOT DATE: 10/12/2023 2:29 PM  
 PLOT TIME: 10/12/2023 2:29 PM  
 PLOT USER: CHANGELIST LIBRARY: 10/12/2023 2:29 PM  
 PLOT DEVICE: HP DesignJet T1100e  
 PLOT SCALE: 1"=100'-0"









IMAGES  
 XREFS  
 PLOTTED BY  
 DATE  
 DWG NAME

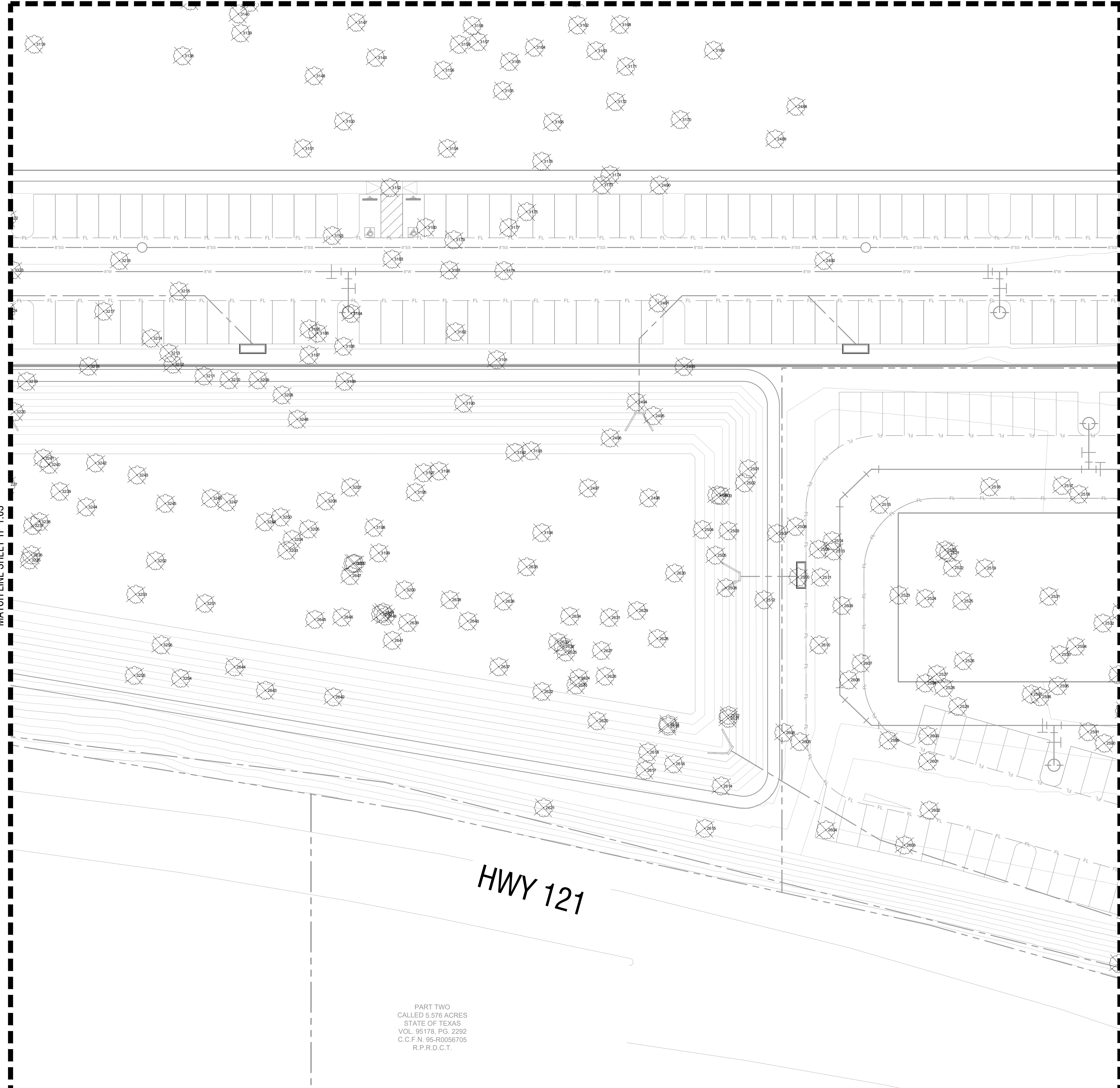
Lowett Industrial Coppel 121 West Ridge\_EK : /Tree - Option 1 : /Body : westridge : mba-3 : xdtm : xDraw : xDraw : abrown-LA  
 CHANGELIST LIBRARY: 10/25/2023 2:29 PM  
 PLOTTED BY: david.coppel  
 DATE: 10/25/2023  
 DWG NAME: TP 1.01 - Option 1.dwg

This document, together with the concepts and designs presented herein, is an instrument of service, is intended only for the specific purpose and client for which it was prepared. Review of and reliance upon this document without written authorization and adaptation by Kimley-Horn and Associates, Inc. shall be without liability to Kimley-Horn and Associates, Inc.

MATCH LINE SHEET TP 1.01

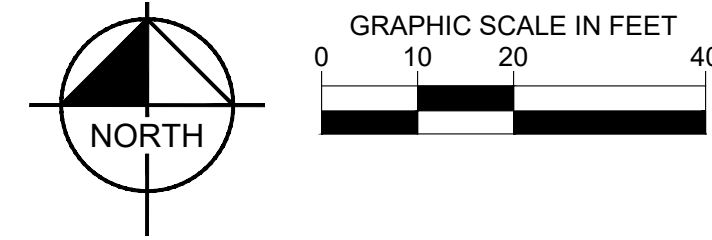
MATCH LINE SHEET TP 1.03

MATCH LINE SHEET TP 1.05



HWY 121

PART TWO  
 CALLED 5.576 ACRES  
 STATE OF TEXAS  
 VOL. 95178, PG. 2292  
 C.C.F.N. 95-R0056705  
 R.P.R.D.C.T.



**LEGEND**

	XXXX EXISTING TREE TO BE REMOVED
	XXXX EXISTING TREE TO REMAIN
	TP TREE PROTECTION FENCING

**NOTE:**  
 TREES TO BE CLASSIFIED PER ARTICLE 34 - DIVISION 2

No.	REVISIONS	DATE

**Kimley-Horn**  
 2600 N CENTRAL EXPRESSWAY, SUITE 400,  
 RICHARDSON, TX 75080  
 PHONE: 972-770-1300 FAX: 972-239-3820  
 WWW.KIMLEY-HORN.COM TX F-528  
 © 2023 KIMLEY-HORN AND ASSOCIATES, INC.

FOR REVIEW ONLY  
 Not for construction or permit purposes.  
**Kimley-Horn**  
 R.L.A. BLAINE D. MIKULIK  
 I.A. No. 3488 DATE: 10/12/2023

KHA PROJECT	0649225668
DATE	OCTOBER 2023
SCALE	AS SHOWN
DESIGNED BY	LC
DRAWN BY	LC
CHECKED BY	BDW

LOVETT COPPELL  
 PREPARED FOR  
 LOVETT INDUSTRIAL  
 COPPELL  
 TEXAS

TREE PRESERVATION PLAN  
 (NO EXEMPTION)

SHEET NUMBER  
 TP 1.04



City of Coppell - Tree Mitigation Table										
Tag #	DBH	Scientific	Common	Health	Stems	Action	Location	Protected	Replacement Ratio	Mitigation Required
2333	24.4	<i>Prosopis glandulosa</i>	MESQUITE	Healthy	Multi	REMOVE	DIA	SPECIMEN	1:10	244
2334	8.2	<i>Ulmus crassifolia</i>	CEDAR ELM	Healthy	Single	REMOVE	DIA	PROTECTED	1:1	8.2
2335	6.3	<i>Prosopis glandulosa</i>	MESQUITE	Healthy	Multi	REMOVE	DIA	UNPROTECTED	0	0
2336	6.4	<i>Ulmus crassifolia</i>	CEDAR ELM	Healthy	Single	REMOVE	DIA	PROTECTED	1:1	6.4
2337	6.7	<i>Ulmus crassifolia</i>	CEDAR ELM	Healthy	Single	REMOVE	DIA	PROTECTED	1:1	6.7
2338	8.2	<i>Ulmus crassifolia</i>	CEDAR ELM	Healthy	Single	REMOVE	DIA	PROTECTED	1:1	8.2
2339	10	<i>Prosopis glandulosa</i>	MESQUITE	Healthy	Multi	REMOVE	DIA	PROTECTED	1:1	10
2340	8.2	<i>Ulmus crassifolia</i>	CEDAR ELM	Healthy	Multi	REMOVE	DIA	PROTECTED	1:1	8.2
2341	9.2	<i>Prosopis glandulosa</i>	MESQUITE	Healthy	Multi	REMOVE	DIA	UNPROTECTED	0	0
2342	8.4	<i>Prosopis glandulosa</i>	MESQUITE	Healthy	Forked	REMOVE	DIA	UNPROTECTED	0	0
2343	6.7	<i>Quercus stellata</i>	POST OAK	Healthy	Single	REMOVE	DIA	PROTECTED	1:1	6.7
2344	10.6	<i>Prosopis glandulosa</i>	MESQUITE	Healthy	Multi	REMOVE	DIA	PROTECTED	1:1	10.6
2345	6.4	<i>Prosopis glandulosa</i>	MESQUITE	Healthy	Forked	REMOVE	DIA	UNPROTECTED	0	0
2346	9.9	<i>Ulmus crassifolia</i>	CEDAR ELM	Healthy	Single	REMOVE	DIA	PROTECTED	1:1	9.9
2347	6.9	<i>Ulmus crassifolia</i>	CEDAR ELM	Healthy	Single	REMOVE	DIA	PROTECTED	1:1	6.9
2348	6.5	<i>Ulmus crassifolia</i>	CEDAR ELM	Healthy	Single	REMOVE	DIA	PROTECTED	1:1	6.5
2364	10.6	<i>Gleditsia triacanthos</i>	HONEY LOCUST	Healthy	Multi	REMOVE	DIA	PROTECTED	1:1	10.6
2365	6.4	<i>Gleditsia triacanthos</i>	HONEY LOCUST	Healthy	Single	REMOVE	DIA	PROTECTED	1:1	6.4
2366	7.1	<i>Ulmus crassifolia</i>	CEDAR ELM	Healthy	Forked	REMOVE	OFFSITE	UNPROTECTED	0	0
2367	7.8	<i>Ulmus crassifolia</i>	CEDAR ELM	Healthy	Forked	REMOVE	OFFSITE	UNPROTECTED	0	0
2368	30.3	<i>Quercus stellata</i>	POST OAK	Healthy	Single	REMOVE	DIA	SPECIMEN	1:10	303
2369	35.6	<i>Quercus stellata</i>	POST OAK	Healthy	Single	REMOVE	DIA	SPECIMEN	1:10	356
2371	16.1	<i>Fraxinus pennsylvanica</i>	GREEN ASH	Healthy	Multi	REMOVE	DIA	PROTECTED	1:1	16.1
2391	21.9	<i>Quercus stellata</i>	POST OAK	Healthy	Single	REMOVE	DIA	PROTECTED	1:1	21.9
2392	27.4	<i>Quercus stellata</i>	POST OAK	Healthy	Single	REMOVE	DIA	SPECIMEN	1:10	274
2393	29.1	<i>Quercus stellata</i>	POST OAK	Healthy	Single	REMOVE	DIA	SPECIMEN	1:10	291
2396	9.3	<i>Populus deltoides</i>	EASTERN COTTONWOOD	Healthy	Single	REMOVE	OFFSITE	UNPROTECTED	0	0
2397	11.4	<i>Celtis laevigata</i>	HACKBERRY	Healthy	Forked	REMOVE	OFFSITE	UNPROTECTED	1:1	11.4
2400	15.6	<i>Populus deltoides</i>	EASTERN COTTONWOOD	Healthy	Single	REMOVE	DIA	PROTECTED	1:1	15.6
2401	6.6	<i>Juniperus virginiana</i>	EASTERN REDCEDAR	Healthy	Single	REMOVE	DIA	PROTECTED	1:1	6.6
2402	10.5	<i>Ulmus americana</i>	AMERICAN ELM	Healthy	Single	REMOVE	DIA	PROTECTED	1:1	10.5
2403	7.5	<i>Celtis laevigata</i>	HACKBERRY	Healthy	Single	REMOVE	DIA	UNPROTECTED	0	0
2404	9.2	<i>Celtis laevigata</i>	HACKBERRY	Healthy	Single	REMOVE	OFFSITE	UNPROTECTED	0	0
2407	13.6	<i>Populus deltoides</i>	EASTERN COTTONWOOD	Declining	Single	REMOVE	DIA	UNPROTECTED	0	0
2410	9.5	<i>Prosopis glandulosa</i>	MESQUITE	Declining	Single	REMOVE	OFFSITE	UNPROTECTED	0	0
2411	7	<i>Gleditsia triacanthos</i>	HONEY LOCUST	Healthy	Single	REMOVE	OFFSITE	PROTECTED	1:1	7
2412	8	<i>Celtis laevigata</i>	HACKBERRY	Healthy	Single	REMOVE	DIA	UNPROTECTED	0	0
2416	11.8	<i>Maclura pomifera</i>	OSAGE-ORANGE	Healthy	Single	REMOVE	OFFSITE	PROTECTED	1:1	11.8
2423	13.9	<i>Ulmus americana</i>	AMERICAN ELM	Healthy	Single	REMOVE	DIA	PROTECTED	1:1	13.9
2425	23.5	<i>Populus deltoides</i>	EASTERN COTTONWOOD	Healthy	Multi	REMOVE	OFFSITE	PROTECTED	1:1	23.5
2426	27.4	<i>Quercus stellata</i>	POST OAK	Declining	Single	REMOVE	DIA	UNPROTECTED	0	0

City of Coppell - Tree Mitigation Table										
Tag #	DBH	Scientific	Common	Health	Stems	Action	Location	Protected	Replacement Ratio	Mitigation Required
2446	8.3	<i>Ulmus crassifolia</i>	CEDAR ELM	Healthy	Single	REMOVE	OFFSITE	PROTECTED	1:1	8.3
2447	6.6	<i>Celtis laevigata</i>	HACKBERRY	Healthy	Single	REMOVE	DIA	UNPROTECTED	0	0
2450	7.3	<i>Ulmus crassifolia</i>	CEDAR ELM	Healthy	Forked	REMOVE	DIA	PROTECTED	1:1	7.3
2451	6.3	<i>Celtis laevigata</i>	HACKBERRY	Healthy	Single	REMOVE	DIA	UNPROTECTED	0	0
2483	12.6	<i>Quercus shumardii</i>	SHUMARD OAK	Healthy	Single	REMOVE	DIA	PROTECTED	1:1	12.6
2484	8.3	<i>Quercus shumardii</i>	SHUMARD OAK	Healthy	Single	REMOVE	DIA	PROTECTED	1:1	8.3
2488	17.5	<i>Ulmus crassifolia</i>	CEDAR ELM	Healthy	Multi	REMOVE	DIA	PROTECTED	1:1	17.5
2489	11.9	<i>Ulmus crassifolia</i>	CEDAR ELM	Healthy	Single	REMOVE	DIA	PROTECTED	1:1	11.9
2490	15.3	<i>Ulmus crassifolia</i>	CEDAR ELM	Healthy	Single	REMOVE	DIA	PROTECTED	1:1	15.3
2491	19	<i>Salix nigra</i>	BLACK WILLOW	Healthy	Single	REMOVE	DIA	PROTECTED	1:1	19
2492	33.2	<i>Quercus stellata</i>	POST OAK	Healthy	Single	REMOVE	DIA	SPECIMEN	1:10	332
2493	14.4	<i>Salix nigra</i>	BLACK WILLOW	Healthy	Forked	REMOVE	DIA	PROTECTED	1:1	14.4
2494	32.8	<i>Quercus stellata</i>	POST OAK	Healthy	Single	REMOVE	DIA	SPECIMEN	1:10	328
2495	22.3	<i>Quercus stellata</i>	POST OAK	Healthy	Single	REMOVE	DIA	PROTECTED	1:1	22.3
2496	6.2	<i>Juniperus virginiana</i>	EASTERN REDCEDAR	Healthy	Single	REMOVE	DIA	PROTECTED	1:1	6.2
2497	6.6	<i>Juniperus virginiana</i>	EASTERN REDCEDAR	Healthy	Single	REMOVE	DIA	PROTECTED	1:1	6.6
2498	10.5	<i>Quercus stellata</i>	POST OAK	Healthy	Single	REMOVE	DIA	PROTECTED	1:1	10.5
2499	7.3	<i>Juniperus virginiana</i>	EASTERN REDCEDAR	Healthy	Multi	REMOVE	DIA	PROTECTED	1:1	7.3
2500	7.7	<i>Prosopis glandulosa</i>	MESQUITE	Healthy	Single	REMOVE	DIA	UNPROTECTED	0	0
2501	8.4	<i>Quercus stellata</i>	POST OAK	Healthy	Single	REMOVE	DIA	PROTECTED	1:1	8.4
2502	7.8	<i>Quercus marilandica</i>	BLACKJACK OAK	Healthy	Single	REMOVE	DIA	PROTECTED	1:1	7.8
2503	6.3	<i>Juniperus virginiana</i>	EASTERN REDCEDAR	Healthy	Single	REMOVE	DIA	PROTECTED	1:1	6.3
2504	6.4	<i>Juniperus virginiana</i>	EASTERN REDCEDAR	Healthy	Single	REMOVE	DIA	PROTECTED	1:1	6.4
2505	8	<i>Juniperus virginiana</i>	EASTERN REDCEDAR	Healthy	Single	REMOVE	DIA	PROTECTED	1:1	8
2506	8.2	<i>Juniperus virginiana</i>	EASTERN REDCEDAR	Healthy	Single	REMOVE	DIA	PROTECTED	1:1	8.2
2507	8.6	<i>Quercus stellata</i>	POST OAK	Healthy	Single	REMOVE	DIA	PROTECTED	1:1	8.6
2508	6.4	<i>Ulmus crassifolia</i>	CEDAR ELM	Healthy	Single	REMOVE	DIA	PROTECTED	1:1	6.4
2509	6.5	<i>Gleditsia triacanthos</i>	HONEY LOCUST	Healthy	Single	REMOVE	DIA	PROTECTED	1:1	6.5
2510	9.9	<i>Celtis laevigata</i>	HACKBERRY	Healthy	Multi	REMOVE	DIA	UNPROTECTED	0	0
2511	9	<i>Juniperus virginiana</i>	EASTERN REDCEDAR	Healthy	Single	REMOVE	DIA	PROTECTED	1:1	9
2512	15.9	<i>Quercus stellata</i>	POST OAK	Healthy	Single	REMOVE	DIA	PROTECTED	1:1	15.9
2513	6.6	<i>Ulmus crassifolia</i>	CEDAR ELM	Healthy	Single	REMOVE	DIA	PROTECTED	1:1	6.6
2514	6.4	<i>Ulmus crassifolia</i>	CEDAR ELM	Healthy	Single	REMOVE	DIA	PROTECTED	1:1	6.4
2515	6.3	<i>Celtis laevigata</i>	HACKBERRY	Healthy	Single	REMOVE	DIA	UNPROTECTED	0	0
2516	10.1	<i>Celtis laevigata</i>	HACKBERRY	Healthy	Single	REMOVE	DIA	PROTECTED	1:1	10.1
2517	7.1	<i>Celtis laevigata</i>	HACKBERRY	Healthy	Single	REMOVE	DIA	UNPROTECTED	0	0
2518	7.2	<i>Celtis laevigata</i>	HACKBERRY	Healthy	Single	REMOVE	DIA	UNPROTECTED	0	0
2519	6.5	<i>Maclura pomifera</i>	OSAGE-ORANGE	Healthy	Single	REMOVE	DIA	UNPROTECTED	0	0
2520	15.2	<i>Juniperus virginiana</i>	EASTERN REDCEDAR	Healthy	Single	REMOVE	DIA	PROTECTED	1:1	15.2
2521	7.3	<i>Celtis laevigata</i>	HACKBERRY	Healthy	Single	REMOVE	DIA	UNPROTECTED	0	0
2522	13	<i>Celtis laevigata</i>	HACKBERRY	Healthy	Single	REMOVE	DIA	PROTECTED	1:1	13
2523	11.7	<i>Celtis laevigata</i>	HACKBERRY	Healthy	Single	REMOVE	DIA	PROTECTED	1:1	11.7
2524	7.1	<i>Ulmus crassifolia</i>	CEDAR ELM	Healthy	Single	REMOVE	DIA	PROTECTED	1:1	7.1
2525	7.4	<i>Celtis laevigata</i>	HACKBERRY	Healthy	Single	REMOVE	DIA	UNPROTECTED	0	0
2526	7.1	<i>Celtis laevigata</i>	HACKBERRY	Healthy	Single	REMOVE	DIA	UNPROTECTED	0	0
2527	16.5	<i>Celtis laevigata</i>	HACKBERRY	Healthy	Multi	REMOVE	DIA	PROTECTED	1:1	16.5
2528	7.8	<i>Celtis laevigata</i>	HACKBERRY	Healthy	Single	REMOVE	DIA	UNPROTECTED	0	0
2529	7.4	<i>Celtis laevigata</i>	HACKBERRY	Healthy	Single	REMOVE	DIA	UNPROTECTED	0	0
2530	13.9	<i>Maclura pomifera</i>	OSAGE-ORANGE	Healthy	Multi	REMOVE	DIA	PROTECTED	1:1	13.9
2531	8.8	<i>Ulmus crassifolia</i>	CEDAR ELM	Healthy	Multi	REMOVE	DIA	PROTECTED	1:1	8.8
2532	6.7	<i>Ulmus crassifolia</i>	CEDAR ELM	Healthy	Single	REMOVE	DIA	PROTECTED	1:1	6.7
2533	6	<i>Prosopis glandulosa</i>	MESQUITE	Declining	Single	REMOVE	DIA	UNPROTECTED	0	0
2534	7.9	<i>Ulmus crassifolia</i>	CEDAR ELM	Healthy	Single	REMOVE	DIA	PROTECTED	1:1	7.9
2535	6.3	<i>Ulmus crassifolia</i>	CEDAR ELM	Healthy	Single	REMOVE	DIA	PROTECTED	1:1	6.3
2536	13.8	<i>Ulmus crassifolia</i>	CEDAR ELM	Healthy	Multi	REMOVE	DIA	PROTECTED	1:1	13.8
2537	7.4	<i>Ulmus crassifolia</i>	CEDAR ELM	Healthy	Single	REMOVE	DIA	PROTECTED	1:1	7.4
2538	10.9	<i>Quercus stellata</i>	POST OAK	Healthy	Single	REMOVE	DIA	PROTECTED	1:1	10.9
2539	10.4	<i>Quercus stellata</i>	POST OAK	Healthy	Single	REMOVE	DIA	PROTECTED	1:1	10.4
2540	19.6	<i>Quercus stellata</i>	POST OAK	Healthy	Single	REMOVE	DIA	PROTECTED	1:1	19.6
2541	6.9	<i>Juniperus virginiana</i>	EASTERN REDCEDAR	Healthy	Single	REMOVE	DIA	PROTECTED	1:1	6.9
2542	25.6	<i>Ulmus crassifolia</i>	CEDAR ELM	Healthy	Multi	REMOVE	DIA	SPECIMEN	1:10	256
2543	18	<i>Quercus stellata</i>	POST OAK	Healthy	Single	REMOVE	DIA	PROTECTED	1:1	18
2544	28.9	<i>Ulmus crassifolia</i>	CEDAR ELM	Healthy	Multi	REMOVE	DIA	SPECIMEN	1:10	289

City of Coppell - Tree Mitigation Table										
Tag #	DBH	Scientific	Common	Health	Stems	Action	Location	Protected	Replacement Ratio	Mitigation Required
2545	8.3	<i>Juniperus virginiana</i>	EASTERN REDCEDAR	Healthy	Single	REMOVE	DIA	PROTECTED	1:1	8.3
2546	6.3	<i>Juniperus virginiana</i>	EASTERN REDCEDAR	Healthy	Single	REMOVE	DIA	PROTECTED	1:1	6.3
2547	6.4	<i>Juniperus virginiana</i>	EASTERN REDCEDAR	Healthy	Single	REMOVE	DIA	PROTECTED	1:1	6.4
2548	7.9	<i>Celtis laevigata</i>	HACKBERRY	Healthy	Single	REMOVE	DIA	UNPROTECTED	0	0
2549	6.1	<i>Ulmus crassifolia</i>	CEDAR ELM	Healthy	Single	REMOVE	DIA	PROTECTED	1:1	6.1
2550	6.3	<i>Ulmus crassifolia</i>	CEDAR ELM	Healthy	Single	REMOVE	DIA	PROTECTED	1:1	6.3
2551	7.7	<i>Ulmus crassifolia</i>	CEDAR ELM	Healthy	Single	REMOVE	DIA	PROTECTED	1:1	7.7
2552	6.4	<i>Ulmus crassifolia</i>	CEDAR ELM	Healthy	Single	REMOVE	DIA	PROTECTED	1:1	6.4
2553	6.3	<i>Juniperus virginiana</i>	EASTERN REDCEDAR	Healthy	Single	REMOVE	DIA	PROTECTED	1:1	6.3
2554	6.4	<i>Ulmus crassifolia</i>	CEDAR ELM	Healthy	Single	REMOVE	DIA	PROTECTED	1:1	6.4
2555	8.9	<i>Ulmus crassifolia</i>	CEDAR ELM	Healthy	Single	REMOVE	DIA	PROTECTED	1:1	8.9
2556	9.2	<i>Ulmus crassifolia</i>	CEDAR ELM	Healthy	Single	REMOVE	DIA	PROTECTED	1:1	9.2
2557	9.5	<i>Ulmus crassifolia</i>	CEDAR ELM	Healthy	Multi	REMOVE	DIA	PROTECTED	1:1	9.5
2558	7.5	<i>Ulmus crassifolia</i>	CEDAR ELM	Healthy	Forked	REMOVE	DIA	PROTECTED	1:1	7.5
2559	9	<i>Ulmus crassifolia</i>	CEDAR ELM	Healthy	Single	REMOVE	DIA	PROTECTED	1:1	9
2560	7	<i>Prosopis glandulosa</i>	MESQUITE	Declining	Single	REMOVE	DIA	UNPROTECTED	0	0
2561	9.1	<i>Prosopis glandulosa</i>	MESQUITE	Healthy	Multi	REMOVE	DIA	UNPROTECTED	0	0
2562	7.5	<i>Carya illinoensis</i>	PECAN	Healthy	Multi	REMOVE	DIA	PROTECTED	1:1	7.5
2563	8.8	<i>Ulmus crassifolia</i>	CEDAR ELM	Healthy	Single	REMOVE	DIA	PROTECTED	1:1	8.8
2564	17.6	<i>Quercus shumardii</i>	SHUMARD OAK	Healthy	Single	REMOVE	DIA	PROTECTED	1:1	17.6
2565	13.2	<i>Quercus shumardii</i>	SHUMARD OAK	Healthy	Single	REMOVE	DIA	PROTECTED	1:1	13.2
2566	14.8	<i>Quercus shumardii</i>	SHUMARD OAK	Healthy	Single	REMOVE	DIA	PROTECTED	1:1	14.8
2567	6.7	<i>Juniperus virginiana</i>	EASTERN REDCEDAR	Healthy	Single	REMOVE	DIA	PROTECTED	1:1	6.7
2568	8.2	<i>Maclura pomifera</i>	OSAGE-ORANGE	Healthy	Forked	REMOVE	DIA	UNPROTECTED	0	0
2569	7.									



City of Coppell - Tree Mitigation Table										
Tag #	DBH	Scientific	Common	Health	Stems	Action	Location	Protected	Replacement Ratio	Mitigation Required
2651	13.7	<i>Prosopis glandulosa</i>	MESQUITE	Healthy	Multi	REMOVE	DIA	PROTECTED	1:1	13.7
2652	7.6	<i>Quercus stellata</i>	POST OAK	Healthy	Single	REMOVE	DIA	PROTECTED	1:1	7.6
2653	7.3	<i>Ulmus crassifolia</i>	CEDAR ELM	Healthy	Multi	REMOVE	DIA	PROTECTED	1:1	7.3
2654	6.2	<i>Ulmus crassifolia</i>	CEDAR ELM	Healthy	Single	REMOVE	DIA	PROTECTED	1:1	6.2
2655	7.2	<i>Ulmus crassifolia</i>	CEDAR ELM	Healthy	Single	REMOVE	DIA	PROTECTED	1:1	7.2
2656	6.1	<i>Ulmus crassifolia</i>	CEDAR ELM	Healthy	Single	REMOVE	DIA	PROTECTED	1:1	6.1
2657	6.6	<i>Ulmus crassifolia</i>	CEDAR ELM	Healthy	Single	REMOVE	DIA	PROTECTED	1:1	6.6
2658	7.2	<i>Quercus stellata</i>	POST OAK	Healthy	Single	REMOVE	DIA	PROTECTED	1:1	7.2
2659	6.6	<i>Quercus stellata</i>	POST OAK	Healthy	Single	REMOVE	DIA	PROTECTED	1:1	6.6
2660	8.5	<i>Celtis laevigata</i>	HACKBERRY	Healthy	Single	REMOVE	DIA	UNPROTECTED	0	0
2661	8.3	<i>Ulmus crassifolia</i>	CEDAR ELM	Healthy	Multi	REMOVE	DIA	PROTECTED	1:1	8.3
2662	10.5	<i>Ulmus crassifolia</i>	CEDAR ELM	Healthy	Single	REMOVE	DIA	PROTECTED	1:1	10.5
2663	6.6	<i>Celtis laevigata</i>	HACKBERRY	Healthy	Single	REMOVE	DIA	UNPROTECTED	0	0
2664	10.3	<i>Celtis laevigata</i>	HACKBERRY	Healthy	Forked	REMOVE	DIA	PROTECTED	1:1	10.3
2665	16.9	<i>Ulmus crassifolia</i>	CEDAR ELM	Healthy	Forked	REMOVE	DIA	PROTECTED	1:1	16.9
2666	7.1	<i>Prosopis glandulosa</i>	MESQUITE	Healthy	Multi	REMOVE	DIA	UNPROTECTED	0	0
2667	15.3	<i>Ulmus crassifolia</i>	CEDAR ELM	Healthy	Multi	REMOVE	DIA	PROTECTED	1:1	15.3
2668	12.9	<i>Prosopis glandulosa</i>	MESQUITE	Healthy	Single	REMOVE	DIA	PROTECTED	1:1	12.9
2669	11.8	<i>Ulmus crassifolia</i>	CEDAR ELM	Healthy	Multi	REMOVE	DIA	PROTECTED	1:1	11.8
2670	8.8	<i>Quercus stellata</i>	POST OAK	Healthy	Single	REMOVE	DIA	PROTECTED	1:1	8.8
2671	11.5	<i>Ulmus crassifolia</i>	CEDAR ELM	Healthy	Single	REMOVE	DIA	PROTECTED	1:1	11.5
2672	7.5	<i>Quercus stellata</i>	POST OAK	Healthy	Single	REMOVE	DIA	PROTECTED	1:1	7.5
2673	9.1	<i>Quercus stellata</i>	POST OAK	Healthy	Single	REMOVE	DIA	PROTECTED	1:1	9.1
2674	14.2	<i>Ulmus crassifolia</i>	CEDAR ELM	Healthy	Multi	REMOVE	DIA	PROTECTED	1:1	14.2
2675	14.5	<i>Prosopis glandulosa</i>	MESQUITE	Healthy	Multi	REMOVE	DIA	PROTECTED	1:1	14.5
2676	6.8	<i>Ulmus crassifolia</i>	CEDAR ELM	Healthy	Single	REMOVE	DIA	PROTECTED	1:1	6.8
2677	10	<i>Ulmus crassifolia</i>	CEDAR ELM	Healthy	Single	REMOVE	DIA	PROTECTED	1:1	10
2678	10.6	<i>Prosopis glandulosa</i>	MESQUITE	Declining	Single	REMOVE	DIA	UNPROTECTED	0	0
2679	9.8	<i>Quercus stellata</i>	POST OAK	Healthy	Single	REMOVE	DIA	PROTECTED	1:1	9.8
2680	6	<i>Celtis laevigata</i>	HACKBERRY	Healthy	Single	REMOVE	DIA	UNPROTECTED	0	0
2681	6.6	<i>Ulmus crassifolia</i>	CEDAR ELM	Healthy	Single	REMOVE	DIA	PROTECTED	1:1	6.6
2682	8	<i>Quercus stellata</i>	POST OAK	Healthy	Single	REMOVE	DIA	PROTECTED	1:1	8
2683	6.2	<i>Celtis laevigata</i>	HACKBERRY	Healthy	Single	REMOVE	DIA	UNPROTECTED	0	0
2684	9.6	<i>Quercus stellata</i>	POST OAK	Healthy	Single	REMOVE	DIA	PROTECTED	1:1	9.6
2685	7.1	<i>Quercus stellata</i>	POST OAK	Healthy	Single	REMOVE	DIA	PROTECTED	1:1	7.1
2686	9.4	<i>Quercus stellata</i>	POST OAK	Healthy	Single	REMOVE	DIA	PROTECTED	1:1	9.4
2687	12.6	<i>Prosopis glandulosa</i>	MESQUITE	Healthy	Multi	REMOVE	DIA	PROTECTED	1:1	12.6
2688	6.7	<i>Quercus stellata</i>	POST OAK	Healthy	Single	REMOVE	DIA	PROTECTED	1:1	6.7
2689	8.2	<i>Quercus stellata</i>	POST OAK	Healthy	Single	REMOVE	DIA	PROTECTED	1:1	8.2
2690	9.4	<i>Ulmus crassifolia</i>	CEDAR ELM	Healthy	Multi	REMOVE	DIA	PROTECTED	1:1	9.4
2691	9	<i>Quercus stellata</i>	POST OAK	Healthy	Single	REMOVE	DIA	PROTECTED	1:1	9
2692	7.9	<i>Quercus stellata</i>	POST OAK	Healthy	Single	REMOVE	DIA	PROTECTED	1:1	7.9
2693	6.4	<i>Quercus stellata</i>	POST OAK	Healthy	Single	REMOVE	DIA	PROTECTED	1:1	6.4
2694	7.8	<i>Ulmus crassifolia</i>	CEDAR ELM	Healthy	Single	REMOVE	DIA	PROTECTED	1:1	7.8
2695	7.7	<i>Prosopis glandulosa</i>	MESQUITE	Healthy	Single	REMOVE	DIA	UNPROTECTED	0	0
2696	13.5	<i>Quercus stellata</i>	POST OAK	Healthy	Single	REMOVE	DIA	PROTECTED	1:1	13.5
2697	8.7	<i>Ulmus crassifolia</i>	CEDAR ELM	Healthy	Single	REMOVE	DIA	PROTECTED	1:1	8.7
2698	12.8	<i>Celtis laevigata</i>	HACKBERRY	Healthy	Single	REMOVE	DIA	PROTECTED	1:1	12.8
2699	6.4	<i>Juniperus virginiana</i>	EASTERN REDCEDAR	Healthy	Single	REMOVE	DIA	PROTECTED	1:1	6.4
2700	8	<i>Prosopis glandulosa</i>	MESQUITE	Healthy	Single	REMOVE	DIA	UNPROTECTED	0	0
2701	9.1	<i>Prosopis glandulosa</i>	MESQUITE	Healthy	Forked	REMOVE	DIA	UNPROTECTED	0	0
2702	14.6	<i>Prosopis glandulosa</i>	MESQUITE	Healthy	Single	REMOVE	DIA	PROTECTED	1:1	14.6
2703	8.1	<i>Juniperus virginiana</i>	EASTERN REDCEDAR	Healthy	Single	REMOVE	DIA	PROTECTED	1:1	8.1
2704	20.8	<i>Ulmus crassifolia</i>	CEDAR ELM	Healthy	Forked	REMOVE	DIA	PROTECTED	1:1	20.8
2705	6	<i>Ulmus crassifolia</i>	CEDAR ELM	Healthy	Multi	REMOVE	DIA	PROTECTED	1:1	6
2706	6.2	<i>Ulmus crassifolia</i>	CEDAR ELM	Healthy	Single	REMOVE	DIA	PROTECTED	1:1	6.2
2707	17.8	<i>Prosopis glandulosa</i>	MESQUITE	Healthy	Single	REMOVE	DIA	PROTECTED	1:1	17.8
2708	10	<i>Prosopis glandulosa</i>	MESQUITE	Healthy	Single	REMOVE	DIA	PROTECTED	1:1	10
2709	10.3	<i>Prosopis glandulosa</i>	MESQUITE	Declining	Forked	REMOVE	DIA	UNPROTECTED	0	0
2710	14.1	<i>Ulmus crassifolia</i>	CEDAR ELM	Healthy	Multi	REMOVE	DIA	PROTECTED	1:1	14.1
2711	6	<i>Ulmus crassifolia</i>	CEDAR ELM	Healthy	Single	REMOVE	DIA	PROTECTED	1:1	6
2712	14.7	<i>Prosopis glandulosa</i>	MESQUITE	Healthy	Forked	REMOVE	DIA	PROTECTED	1:1	14.7
2713	8.5	<i>Maclura pomifera</i>	OSAGE-ORANGE	Healthy	Multi	REMOVE	DIA	UNPROTECTED	0	0
2714	6.9	<i>Ulmus crassifolia</i>	CEDAR ELM	Healthy	Single	REMOVE	DIA	PROTECTED	1:1	6.9
2715	6.6	<i>Celtis laevigata</i>	HACKBERRY	Healthy	Single	REMOVE	DIA	UNPROTECTED	0	0
2716	10.3	<i>Prosopis glandulosa</i>	MESQUITE	Healthy	Single	REMOVE	DIA	PROTECTED	1:1	10.3
2717	14.4	<i>Prosopis glandulosa</i>	MESQUITE	Healthy	Multi	REMOVE	DIA	PROTECTED	1:1	14.4
2718	6.3	<i>Celtis laevigata</i>	HACKBERRY	Healthy	Single	REMOVE	DIA	UNPROTECTED	0	0
2719	12.4	<i>Maclura pomifera</i>	OSAGE-ORANGE	Healthy	Single	REMOVE	DIA	PROTECTED	1:1	12.4
2720	6.3	<i>Ulmus crassifolia</i>	CEDAR ELM	Healthy	Single	REMOVE	DIA	PROTECTED	1:1	6.3
2721	8.3	<i>Prosopis glandulosa</i>	MESQUITE	Declining	Single	REMOVE	DIA	UNPROTECTED	0	0
2722	15.1	<i>Ulmus crassifolia</i>	CEDAR ELM	Healthy	Multi	REMOVE	DIA	PROTECTED	1:1	15.1
2723	11.1	<i>Ulmus crassifolia</i>	CEDAR ELM	Healthy	Multi	REMOVE	DIA	PROTECTED	1:1	11.1
2724	6.1	<i>Ulmus crassifolia</i>	CEDAR ELM	Healthy	Single	REMOVE	DIA	PROTECTED	1:1	6.1
2725	6.4	<i>Ulmus crassifolia</i>	CEDAR ELM	Healthy	Single	REMOVE	DIA	PROTECTED	1:1	6.4
2726	7.8	<i>Prosopis glandulosa</i>	MESQUITE	Healthy	Multi	REMOVE	DIA	UNPROTECTED	0	0
2727	6.3	<i>Prosopis glandulosa</i>	MESQUITE	Healthy	Single	REMOVE	DIA	UNPROTECTED	0	0
2728	7.8	<i>Ulmus crassifolia</i>	CEDAR ELM	Healthy	Single	REMOVE	DIA	PROTECTED	1:1	7.8
2729	9.4	<i>Ulmus crassifolia</i>	CEDAR ELM	Healthy	Multi	REMOVE	DIA	PROTECTED	1:1	9.4
2730	8	<i>Prosopis glandulosa</i>	MESQUITE	Healthy	Single	REMOVE	DIA	UNPROTECTED	0	0
2731	11.6	<i>Prosopis glandulosa</i>	MESQUITE	Declining	Single	REMOVE	DIA	UNPROTECTED	0	0
2732	6	<i>Juniperus virginiana</i>	EASTERN REDCEDAR	Healthy	Single	REMOVE	DIA	PROTECTED	1:1	6
2733	6.4	<i>Juniperus virginiana</i>	EASTERN REDCEDAR	Healthy	Forked	REMOVE	DIA	PROTECTED	1:1	6.4
2734	11	<i>Prosopis glandulosa</i>	MESQUITE	Declining	Single	REMOVE	DIA	UNPROTECTED	0	0
2735	11.3	<i>Ulmus crassifolia</i>	CEDAR ELM	Healthy	Multi	REMOVE	DIA	PROTECTED	1:1	11.3
2736	8.5	<i>Ulmus crassifolia</i>	CEDAR ELM	Healthy	Forked	REMOVE	DIA	PROTECTED	1:1	8.5
2737	6.1	<i>Ulmus crassifolia</i>	CEDAR ELM	Healthy	Single	REMOVE	DIA	PROTECTED	1:1	6.1
2738	6.9	<i>Ulmus crassifolia</i>	CEDAR ELM	Healthy	Single	REMOVE	DIA	PROTECTED	1:1	6.9
2739	6.2	<i>Ulmus crassifolia</i>	CEDAR ELM	Healthy	Single	REMOVE	DIA	PROTECTED	1:1	6.2
2740	6.4	<i>Prosopis glandulosa</i>	MESQUITE	Declining	Single	REMOVE	DIA	UNPROTECTED	0	0
2741	10.6	<i>Ulmus crassifolia</i>	CEDAR ELM	Healthy	Multi	REMOVE	DIA	PROTECTED	1:1	10.6
2742	26.9	<i>Ulmus crassifolia</i>	CEDAR ELM	Healthy	Multi	REMOVE	DIA	SPECIMEN	1:10	26.9
2743	10.1	<i>Celtis laevigata</i>	HACKBERRY	Healthy	Single	REMOVE	DIA	PROTECTED	1:1	10.1
2744	20.2	<i>Ulmus crassifolia</i>	CEDAR ELM	Healthy	Multi	REMOVE	DIA	PROTECTED	1:1	20.2
2745	15.1	<i>Prosopis glandulosa</i>	MESQUITE	Healthy	Single	REMOVE	DIA	PROTECTED	1:1	15.1
2746	7.4	<i>Ulmus crassifolia</i>	CEDAR ELM	Healthy	Multi	REMOVE	DIA	PROTECTED	1:1	7.4
2747	6.6	<i>Celtis laevigata</i>	HACKBERRY	Healthy	Single	REMOVE	DIA	UNPROTECTED	0	0
2748	13.5	<i>Prosopis glandulosa</i>	MESQUITE	Declining	Single	REMOVE	DIA	UNPROTECTED	0	0
2749	7.2	<i>Juniperus virginiana</i>	EASTERN REDCEDAR	Healthy	Single	REMOVE	DIA	PROTECTED	1:1	7.2
2750	8.6	<i>Celtis laevigata</i>	HACKBERRY	Healthy	Single	REMOVE	DIA	UNPROTECTED	0	0
2751	6.9	<i>Celtis laevigata</i>	HACKBERRY	Healthy	Single	REMOVE	DIA	UNPROTECTED	0	0
2752	7.2	<i>Ulmus crassifolia</i>	CEDAR ELM	Healthy	Multi	REMOVE	DIA	PROTECTED	1:1	7.2
2753	6	<i>Ulmus crassifolia</i>	CEDAR ELM	Healthy	Single	REMOVE	DIA	PROTECTED	1:1	6
2754	6.5	<i>Celtis laevigata</i>	HACKBERRY	Healthy	Single	REMOVE	DIA	UNPROTECTED	0	0
2755	6.1	<i>Prosopis glandulosa</i>	MESQUITE	Declining	Single	REMOVE	DIA	UNPROTECTED	0	0

City of Coppell - Tree Mitigation Table										
Tag #	DBH	Scientific	Common	Health	Stems	Action	Location	Protected	Replacement Ratio	Mitigation Required
2756	6.6	<i>Ulmus crassifolia</i>	CEDAR ELM	Healthy	Single	REMOVE	DIA	PROTECTED	1:1	6.6
2757	7.8	<i>Ulmus crassifolia</i>	CEDAR ELM	Healthy	Multi	REMOVE	DIA	PROTECTED	1:1	7.8
2758	8.4	<i>Celtis laevigata</i>	HACKBERRY	Healthy	Single	REMOVE	DIA	UNPROTECTED	0	0
2759	6.5	<i>Ulmus crassifolia</i>	CEDAR ELM	Healthy	Single	REMOVE	DIA	PROTECTED	1:1	6.5
2760	6.4	<i>Celtis laevigata</i>	HACKBERRY	Healthy	Single	REMOVE	DIA	UNPROTECTED	0	0
2761	7.4	<i>Ulmus crassifolia</i>	CEDAR ELM	Healthy	Single	REMOVE	DIA	PROTECTED	1:1	7.4
2762	7.6	<i>Celtis laevigata</i>	HACKBERRY	Healthy	Single	REMOVE	DIA	UNPROTECTED	0	0
2763	8.1	<i>Ulmus crassifolia</i>	CEDAR ELM	Healthy	Single	REMOVE	DIA	PROTECTED	1:1	8.1
2764	6.2	<i>Maclura pomifera</i>	OSAGE-ORANGE	Healthy	Forked	REMOVE	DIA	UNPROTECTED	0	0
2765	10.6	<i>Ulmus crassifolia</i>	CEDAR ELM	Healthy	Single	REMOVE	DIA	PROTECTED	1:1	10.6
2766	6.7	<i>Ulmus crassifolia</i>	HACKBERRY	Healthy	Single	REMOVE	DIA	UNPROTECTED	0	0
2767	6.9	<i>Ulmus crassifolia</i>	CEDAR ELM	Healthy	Single	REMOVE	DIA	PROTECTED	1:1	6.9
2768	6.1	<i>Ulmus crassifolia</i>	CEDAR ELM	Healthy	Single	REMOVE	DIA	PROTECTED	1:1	6.1
2769	6.3	<i>Ulmus crassifolia</i>	CEDAR ELM	Healthy	Single	REMOVE	DIA	PROTECTED	1:1	6.3
2770	8.7	<i>Ulmus crassifolia</i>	CEDAR ELM	Healthy	Single	REMOVE	DIA	PROTECTED	1:1	8.7
2771	6	<i>Ulmus crassifolia</i>	CEDAR ELM	Healthy	Single	REMOVE	DIA	PROTECTED	1:1	6
2772	16.8	<i>Ulmus crassifolia</i>	CEDAR ELM	Healthy	Single	REMOVE	DIA	PROTECTED	1:1	16.8
2773	13.8	<i>Ulmus crassifolia</i>	CEDAR ELM	Healthy	Forked	REMOVE	DIA	PROTECTED	1:1	13.8
2774	12	<i>Ulmus crassifolia</i>	CEDAR ELM	Healthy	Single	REMOVE	DIA	PROTECTED	1:1	12
2775	17.8	<i>Ulmus crassifolia</i>	CEDAR ELM	Healthy	Single	REMOVE	DIA	PROTECTED	1:1	17.8
2776	15.2	<i>Ulmus crassifolia</i>	CEDAR ELM	Healthy	Multi	REMOVE	DIA	PROTECTED	1:1	15.2
2777	12.9	<i>Ulmus crassifolia</i>	CEDAR ELM	Healthy	Multi	REMOVE	DIA	PROTECTED	1:1	12.9
2778	14.4	<i>Ulmus crassifolia</i>	CEDAR ELM	Healthy	Multi	REMOVE	DIA	PROTECTED	1:1	14.4
2779	16.3	<i>Ulmus crassifolia</i>	CEDAR ELM	Healthy	Forked	REMOVE	DIA	PROTECTED	1:1	16.3
2780	15	<i>Ulmus crassifolia</i>	CEDAR ELM	Healthy	Forked	REMOVE	DIA	PROTECTED	1:1	15
2781										

City of Coppell - Tree Mitigation Table										
Tag #	DBH	Scientific	Common	Health	Stems	Action	Location	Protected	Replacement Ratio	Mitigation Required
2966	7.8	Ulmus crassifolia	CEDAR ELM	Healthy	Single	REMOVE	DIA	PROTECTED	1:1	7.8
2967	7.2	Ulmus crassifolia	CEDAR ELM	Healthy	Forked	REMOVE	DIA	PROTECTED	1:1	7.2
2968	9.2	Ulmus crassifolia	CEDAR ELM	Healthy	Single	REMOVE	DIA	PROTECTED	1:1	9.2
2969	6.4	Ulmus crassifolia	CEDAR ELM	Healthy	Single	REMOVE	DIA	PROTECTED	1:1	6.4
2970	6	Ulmus crassifolia	CEDAR ELM	Healthy	Single	REMOVE	DIA	PROTECTED	1:1	6
2971	7.5	Ulmus crassifolia	CEDAR ELM	Healthy	Single	REMOVE	DIA	PROTECTED	1:1	7.5
2972	6.3	Maclura pomifera	OSAGE-ORANGE	Healthy	Single	REMOVE	DIA	UNPROTECTED	0	0
2973	9	Celtis laevigata	HACKBERRY	Healthy	Single	REMOVE	DIA	UNPROTECTED	0	0
2974	11.8	Ulmus americana	AMERICAN ELM	Healthy	Single	REMOVE	DIA	PROTECTED	1:1	11.8
2975	11.1	Maclura pomifera	OSAGE-ORANGE	Healthy	Multi	REMOVE	DIA	PROTECTED	1:1	11.1
2976	6.6	Celtis laevigata	HACKBERRY	Healthy	Single	REMOVE	DIA	UNPROTECTED	0	0
2977	7.2	Carya illinoensis	PECAN	Healthy	Single	REMOVE	DIA	PROTECTED	1:1	7.2
2978	16.7	Quercus stellata	POST OAK	Healthy	Single	REMOVE	DIA	PROTECTED	1:1	16.7
2979	8.5	Juniperus virginiana	EASTERN REDCEDAR	Healthy	Forked	REMOVE	DIA	PROTECTED	1:1	8.5
2980	6.6	Celtis laevigata	HACKBERRY	Healthy	Single	REMOVE	DIA	UNPROTECTED	0	0
2981	19.8	Juniperus virginiana	EASTERN REDCEDAR	Healthy	Multi	REMOVE	DIA	PROTECTED	1:1	19.8
2982	20.7	Ulmus crassifolia	CEDAR ELM	Healthy	Single	REMOVE	DIA	PROTECTED	1:1	20.7
2983	21.1	Carya illinoensis	PECAN	Healthy	Single	REMOVE	DIA	PROTECTED	1:1	21.1
2984	14.3	Juniperus virginiana	EASTERN REDCEDAR	Healthy	Multi	REMOVE	DIA	PROTECTED	1:1	14.3
2985	7	Ulmus crassifolia	CEDAR ELM	Healthy	Single	REMOVE	DIA	PROTECTED	1:1	7
2986	8.1	Ulmus crassifolia	CEDAR ELM	Healthy	Single	REMOVE	DIA	PROTECTED	1:1	8.1
2987	6	Ulmus crassifolia	CEDAR ELM	Healthy	Single	REMOVE	DIA	PROTECTED	1:1	6
2988	12.4	Juniperus virginiana	EASTERN REDCEDAR	Healthy	Single	REMOVE	DIA	PROTECTED	1:1	12.4
2989	6.9	Juniperus virginiana	EASTERN REDCEDAR	Healthy	Single	REMOVE	DIA	PROTECTED	1:1	6.9
2990	9.9	Ulmus crassifolia	CEDAR ELM	Healthy	Single	REMOVE	DIA	PROTECTED	1:1	9.9
2991	13.6	Juniperus virginiana	EASTERN REDCEDAR	Healthy	Single	REMOVE	DIA	PROTECTED	1:1	13.6
2992	13.2	Ulmus crassifolia	CEDAR ELM	Healthy	Single	REMOVE	DIA	PROTECTED	1:1	13.2
2993	6	Prosopis glandulosa	MESQUITE	Healthy	Forked	REMOVE	DIA	UNPROTECTED	0	0
2994	11.7	Prosopis glandulosa	MESQUITE	Healthy	Multi	REMOVE	DIA	PROTECTED	1:1	11.7
2995	9.9	Prosopis glandulosa	MESQUITE	Healthy	Multi	REMOVE	DIA	UNPROTECTED	0	0
2996	7.3	Populus deltoides	EASTERN COTTONWOOD	Healthy	Single	REMOVE	DIA	UNPROTECTED	0	0
2997	16	Populus deltoides	EASTERN COTTONWOOD	Healthy	Single	REMOVE	DIA	PROTECTED	1:1	16
2998	15.2	Populus deltoides	EASTERN COTTONWOOD	Healthy	Single	REMOVE	DIA	PROTECTED	1:1	15.2
2999	11.1	Populus deltoides	EASTERN COTTONWOOD	Healthy	Single	REMOVE	DIA	PROTECTED	1:1	11.1
3000	6.6	Populus deltoides	EASTERN COTTONWOOD	Healthy	Single	REMOVE	DIA	UNPROTECTED	0	0
3001	2.8	Prosopis glandulosa	MESQUITE	Healthy	Single	REMOVE	DIA	UNPROTECTED	0	0
3002	22.3	Prosopis glandulosa	MESQUITE	Healthy	Forked	REMOVE	DIA	PROTECTED	1:1	22.3
3003	6.4	Prosopis glandulosa	MESQUITE	Healthy	Single	REMOVE	DIA	UNPROTECTED	0	0
3004	6.2	Prosopis glandulosa	MESQUITE	Healthy	Single	REMOVE	DIA	UNPROTECTED	0	0
3005	13.2	Prosopis glandulosa	MESQUITE	Healthy	Multi	REMOVE	DIA	PROTECTED	1:1	13.2
3006	6	Juniperus virginiana	EASTERN REDCEDAR	Healthy	Single	REMOVE	DIA	PROTECTED	1:1	6
3007	8	Gleditsia triacanthos	HONEY LOCUST	Healthy	Single	REMOVE	DIA	PROTECTED	1:1	8
3008	8.4	Prosopis glandulosa	MESQUITE	Healthy	Single	REMOVE	DIA	UNPROTECTED	0	0
3009	6.2	Prosopis glandulosa	MESQUITE	Healthy	Single	REMOVE	DIA	UNPROTECTED	0	0
3010	6.1	Prosopis glandulosa	MESQUITE	Healthy	Single	REMOVE	DIA	UNPROTECTED	0	0
3011	23	Quercus stellata	POST OAK	Healthy	Single	REMOVE	DIA	PROTECTED	1:1	23
3012	21.4	Prosopis glandulosa	MESQUITE	Declining	Single	REMOVE	DIA	UNPROTECTED	0	0
3013	6.4	Juniperus virginiana	EASTERN REDCEDAR	Healthy	Single	REMOVE	DIA	PROTECTED	1:1	6.4
3014	7.9	Juniperus virginiana	EASTERN REDCEDAR	Healthy	Multi	REMOVE	DIA	PROTECTED	1:1	7.9
3015	6.4	Juniperus virginiana	EASTERN REDCEDAR	Healthy	Single	REMOVE	DIA	PROTECTED	1:1	6.4
3016	14	Prosopis glandulosa	MESQUITE	Declining	Single	REMOVE	DIA	UNPROTECTED	0	0
3017	6.2	Celtis laevigata	HACKBERRY	Healthy	Single	REMOVE	DIA	UNPROTECTED	0	0
3018	6.7	Celtis laevigata	HACKBERRY	Healthy	Single	REMOVE	DIA	UNPROTECTED	0	0
3019	6.8	Gleditsia triacanthos	HONEY LOCUST	Healthy	Single	REMOVE	DIA	PROTECTED	1:1	6.8
3020	7.5	Celtis laevigata	HACKBERRY	Healthy	Single	REMOVE	DIA	UNPROTECTED	0	0
3021	13	Prosopis glandulosa	MESQUITE	Declining	Multi	REMOVE	DIA	UNPROTECTED	0	0
3022	7.4	Ulmus crassifolia	CEDAR ELM	Healthy	Single	REMOVE	DIA	PROTECTED	1:1	7.4
3023	13.6	Ulmus crassifolia	CEDAR ELM	Healthy	Single	REMOVE	DIA	PROTECTED	1:1	13.6
3024	16.3	Ulmus crassifolia	CEDAR ELM	Healthy	Multi	REMOVE	DIA	PROTECTED	1:1	16.3
3025	14.4	Ulmus crassifolia	CEDAR ELM	Healthy	Single	REMOVE	DIA	PROTECTED	1:1	14.4
3026	12.6	Prosopis glandulosa	MESQUITE	Declining	Single	REMOVE	DIA	UNPROTECTED	0	0
3027	15.4	Ulmus crassifolia	CEDAR ELM	Healthy	Single	REMOVE	DIA	PROTECTED	1:1	15.4
3028	14.3	Prosopis glandulosa	MESQUITE	Declining	Forked	REMOVE	DIA	UNPROTECTED	0	0
3029	13.5	Prosopis glandulosa	MESQUITE	Declining	Multi	REMOVE	DIA	UNPROTECTED	0	0
3030	6	Juniperus virginiana	EASTERN REDCEDAR	Healthy	Single	REMOVE	DIA	PROTECTED	1:1	6
3031	15.2	Ulmus crassifolia	CEDAR ELM	Healthy	Multi	REMOVE	DIA	PROTECTED	1:1	15.2
3032	11.9	Prosopis glandulosa	MESQUITE	Healthy	Multi	REMOVE	DIA	PROTECTED	1:1	11.9
3033	6.6	Gleditsia triacanthos	HONEY LOCUST	Healthy	Single	REMOVE	DIA	PROTECTED	1:1	6.6
3034	16.1	Prosopis glandulosa	MESQUITE	Healthy	Single	REMOVE	DIA	PROTECTED	1:1	16.1
3035	8.2	Pyrus calleryana	CALLERY PEAR	Healthy	Multi	REMOVE	DIA	PROTECTED	1:1	8.2
3036	8.4	Fraxinus texensis	TEXAS ASH	Healthy	Single	REMOVE	DIA	PROTECTED	1:1	8.4
3037	6.7	Celtis laevigata	HACKBERRY	Healthy	Single	REMOVE	DIA	UNPROTECTED	0	0
3038	6.3	Ulmus crassifolia	CEDAR ELM	Healthy	Forked	REMOVE	DIA	PROTECTED	1:1	6.3
3039	6.4	Gleditsia triacanthos	HONEY LOCUST	Healthy	Single	REMOVE	DIA	PROTECTED	1:1	6.4
3040	16.5	Prosopis glandulosa	MESQUITE	Declining	Forked	REMOVE	DIA	UNPROTECTED	0	0
3041	9	Prosopis glandulosa	MESQUITE	Declining	Single	REMOVE	DIA	UNPROTECTED	0	0
3042	8.1	Quercus virginiana	LIVE OAK	Healthy	Single	REMOVE	DIA	PROTECTED	1:1	8.1
3043	6.2	Juniperus virginiana	EASTERN REDCEDAR	Healthy	Single	REMOVE	DIA	PROTECTED	1:1	6.2
3044	6.3	Maclura pomifera	OSAGE-ORANGE	Healthy	Single	REMOVE	DIA	UNPROTECTED	0	0
3045	7.2	Prosopis glandulosa	MESQUITE	Declining	Single	REMOVE	DIA	UNPROTECTED	0	0
3046	15.8	Ulmus crassifolia	CEDAR ELM	Healthy	Single	REMOVE	DIA	PROTECTED	1:1	15.8
3047	10.3	Ulmus crassifolia	CEDAR ELM	Healthy	Single	REMOVE	DIA	PROTECTED	1:1	10.3
3048	6.2	Ulmus crassifolia	CEDAR ELM	Healthy	Single	REMOVE	DIA	PROTECTED	1:1	6.2
3049	6.6	Ulmus crassifolia	CEDAR ELM	Healthy	Single	REMOVE	DIA	PROTECTED	1:1	6.6
3050	15.7	Quercus stellata	POST OAK	Healthy	Single	REMOVE	DIA	PROTECTED	1:1	15.7
3051	7.1	Quercus shumardii	SHUMARD OAK	Healthy	Multi	REMOVE	OFFSITE	PROTECTED	1:1	7.1
3052	13	Quercus shumardii	SHUMARD OAK	Healthy	Multi	REMOVE	DIA	PROTECTED	1:1	13
3053	12.3	Ulmus crassifolia	CEDAR ELM	Healthy	Single	REMOVE	DIA	PROTECTED	1:1	12.3
3054	6.1	Celtis laevigata	HACKBERRY	Healthy	Single	REMOVE	DIA	UNPROTECTED	0	0
3055	10.4	Ulmus alata	WINGED ELM	Healthy	Single	REMOVE	DIA	PROTECTED	1:1	10.4
3056	7.7	Celtis laevigata	HACKBERRY	Healthy	Single	REMOVE	DIA	UNPROTECTED	0	0
3057	7.6	Ulmus crassifolia	CEDAR ELM	Healthy	Single	REMOVE	DIA	PROTECTED	1:1	7.6
3058	15.9	Ulmus crassifolia	CEDAR ELM	Healthy	Multi	REMOVE	DIA	PROTECTED	1:1	15.9
3059	6.7	Celtis laevigata	HACKBERRY	Healthy	Single	REMOVE	DIA	UNPROTECTED	0	0
3060	11.4	Ulmus crassifolia	CEDAR ELM	Healthy	Single	REMOVE	DIA	PROTECTED	1:1	11.4
3062	20.2	Prosopis glandulosa	MESQUITE	Hazard	Forked	REMOVE	DIA	UNPROTECTED	0	0
3063	15.8	Prosopis glandulosa	MESQUITE	Declining	Forked	REMOVE	DIA	UNPROTECTED	0	0
3064	16.3	Prosopis glandulosa	MESQUITE	Declining	Single	REMOVE	DIA	UNPROTECTED	0	0
3065	13.7	Prosopis glandulosa	MESQUITE	Declining	Single	REMOVE	DIA	UNPROTECTED	0	0
3066	10	Ulmus alata	WINGED ELM	Healthy	Single	REMOVE	DIA	PROTECTED	1:1	10
3067	31.9	Prosopis glandulosa	MESQUITE	Declining	Multi	REMOVE	DIA	UNPROTECTED	0	0
3068	18.8	Prosopis glandulosa	MESQUITE	Declining	Multi	REMOVE	DIA	UNPROTECTED	0	0
3069	6.8	Ulmus crassifolia	CEDAR ELM	Healthy	Single	REMOVE	DIA	PROTECTED	1:1	6.8
3070	6.7	Ulmus crassifolia	CEDAR ELM	Healthy	Single	REMOVE	DIA	PROTECTED	1:1	6.7

City of Coppell - Tree Mitigation Table										
Tag #	DBH	Scientific	Common	Health	Stems	Action	Location	Protected	Replacement Ratio	Mitigation Required
3071	7.5	Ulmus crassifolia	CEDAR ELM	Healthy	Single	REMOVE	DIA	PROTECTED	1:1	7.5
3072	25.6	Prosopis glandulosa	MESQUITE	Healthy	Multi	REMOVE	DIA	SPECIMEN	1:10	25.6
3073	10.2	Prosopis glandulosa	MESQUITE	Healthy	Multi	REMOVE	DIA	PROTECTED	1:1	10.2
3074	6.3	Prosopis glandulosa	MESQUITE	Healthy	Single	REMOVE	DIA	UNPROTECTED	0	0
3075	8	Prosopis glandulosa	MESQUITE	Healthy	Single	REMOVE	DIA	UNPROTECTED	0	0
3076	10.8	Prosopis glandulosa	MESQUITE	Healthy	Multi	REMOVE	DIA	PROTECTED	1:1	10.8
3077	13.1	Prosopis glandulosa	MESQUITE	Healthy	Single	REMOVE	DIA	PROTECTED	1:1	13.1
3078	21.9	Ulmus crassifolia	CEDAR ELM	Healthy	Multi	REMOVE	DIA	PROTECTED	1:1	21.9
3079	7.6	Ulmus crassifolia	CEDAR ELM	Healthy	Single	REMOVE	DIA	PROTECTED	1:1	7.6
3080	9.4	Prosopis glandulosa	MESQUITE	Declining	Single	REMOVE	DIA	UNPROTECTED	0	0
3081	8.4	Quercus stellata	POST OAK	Healthy	Single	REMOVE	DIA	PROTECTED	1:1	8.4
3082	14.3	Quercus stellata	POST OAK	Healthy	Single	REMOVE	DIA	PROTECTED	1:1	14.3
3083	14.4	Ulmus crassifolia	CEDAR ELM	Healthy	Multi	REMOVE	DIA	PROTECTED	1:1	14.4
3084	9.7	Prosopis glandulosa	MESQUITE	Declining	Single	REMOVE	DIA	UNPROTECTED	0	0
3085	6.5	Ulmus crassifolia	CEDAR ELM	Healthy	Single	REMOVE	DIA	PROTECTED	1:1	6.5
3086	6.3	Prosopis glandulosa	MESQUITE	Healthy	Single	REMOVE	DIA	UNPROTECTED	0	0
3087	6.7	Ulmus crassifolia	CEDAR ELM	Healthy	Single	REMOVE	DIA	PROTECTED	1:1	6.7
3090	12.3	Celtis laevigata	HACKBERRY	Healthy	Single	REMOVE	DIA	PROTECTED	1:1	12.3
3091	6.1	Celtis laevigata	HACKBERRY	Healthy	Single	REMOVE	DIA	UNPROTECTED	0	0
3092	9.2	Maclura pomifera	OSAGE-ORANGE	Healthy	Single	REMOVE	DIA	UNPROTECTED	0	0
3093	7.4	Gleditsia triacanthos	HONEY LOCUST	Healthy	Single	REMOVE	DIA	PROTECTED	1:1	7.4
3094	8.5	Juniperus virginiana	EASTERN REDCEDAR	Healthy	Single	REMOVE	DIA	PROTECTED	1:1	8.5
3095	16.1	Ulmus crassifolia	CEDAR ELM	Healthy	Single	REMOVE	DIA	PROTECTED	1:1	16.1
3096	12.3	Ulmus crassifolia	CEDAR ELM	Healthy	Single	REMOVE	DIA	PROTECTED	1:1	12.3
3097	8.6	Juniperus virginiana	EASTERN REDCEDAR	Healthy	Single	REMOVE	DIA	PROTECTED	1:1	8.6
3098	12.3	Prosopis glandulosa	MESQUITE	Declining	Single	REMOVE	DIA	UNPROTECTED	0	0
3099	9.1	Prosopis glandulosa	MESQUITE	Declining	Single	REMOVE	DIA	UNPROTECTED	0	0
3100	10	Juniperus virginiana	EASTERN REDCEDAR	Healthy	Forked	REMOVE	DIA	PROTECTED	1:1	10
3101	7.7	Juniperus virginiana	EASTERN REDCEDAR	Healthy	Single	REMOVE	DIA	PROTECTED	1:1	7.7
3102	10.4	Prosopis glandulosa	MESQUITE	Hazard	Single	REMOVE	DIA	UNPROTECTED	0	0
3103	10	Prosopis glandulosa	MESQUITE	Healthy	Single	REMOVE	DIA	PROTECTED	1:1	10
3104	15.6	Prosopis glandulosa	MESQUITE	Declining	Multi	REMOVE	DIA	UNPROTECTED	0	0
3105	8.8	Prosopis glandulosa	MESQUITE	Declining						

