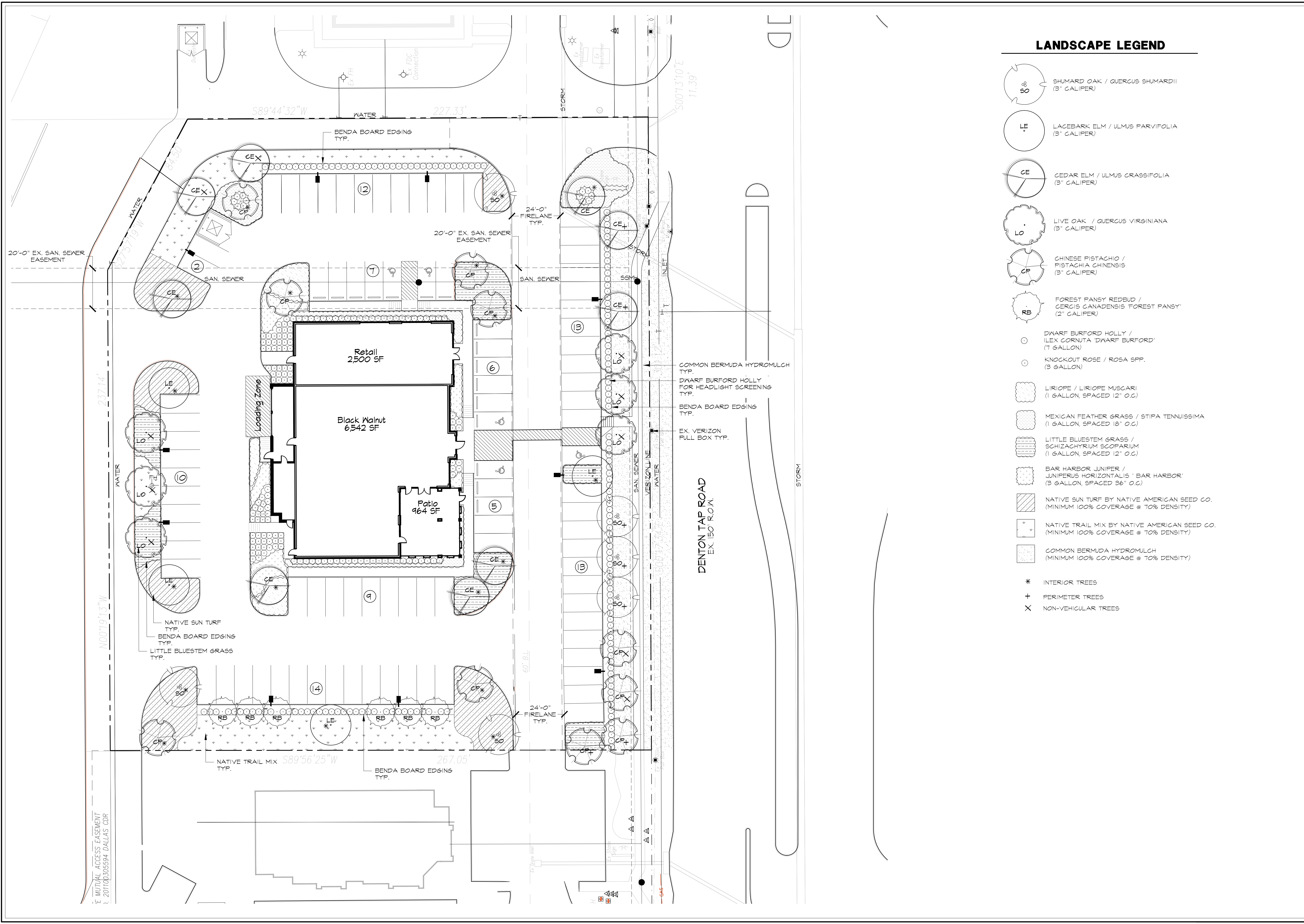


Plotted by: Audrey Plot Date: 5/7/2013 12:30 PM

Drawing: S:\Projects\BAB003\DWG\BAB003-LS.dwg Saved By: Audrey Save Time: 5/7/2013 12:29 PM



LANDSCAPE LEGEND

- SHUMARD OAK / QUERCUS SHUMARDII (3" CALIPER)
- LACEBARK ELM / ULMUS PARVIFOLIA (3" CALIPER)
- CEDAR ELM / ULMUS CRASSIFOLIA (3" CALIPER)
- LIVE OAK / QUERCUS VIRGINIANA (3" CALIPER)
- CHINESE PISTACHIO / PISTACHIA CHINENSIS (3" CALIPER)
- FOREST PANSY REDBUD / CERCIS CANADENSIS 'FOREST PANSY' (2" CALIPER)
- DWARF BURFORD HOLLY / ILEX CORNUTA 'DWARF BURFORD' (7 GALLON)
- KNOCKOUT ROSE / ROSA SPP. (3 GALLON)
- LIRIOPE / LIRIOPE MUSCARI (1 GALLON, SPACED 12" O.C.)
- MEXICAN FEATHER GRASS / STIPA TENNUSSIMA (1 GALLON, SPACED 18" O.C.)
- LITTLE BLUESTEM GRASS / SCHIZACHYRIUM SCOPARIUM (1 GALLON, SPACED 12" O.C.)
- BAR HARBOR JUNIPER / JUNIPERUS HORIZONTALIS 'BAR HARBOR' (3 GALLON, SPACED 36" O.C.)
- NATIVE SUN TURF BY NATIVE AMERICAN SEED CO. (MINIMUM 100% COVERAGE @ 70% DENSITY)
- NATIVE TRAIL MIX BY NATIVE AMERICAN SEED CO. (MINIMUM 100% COVERAGE @ 70% DENSITY)
- COMMON BERMUDA HYDROMULCH (MINIMUM 100% COVERAGE @ 70% DENSITY)
- * INTERIOR TREES
- + PERIMETER TREES
- X NON-VEHICULAR TREES

STUDIO DESIGN GROUP
 Studio 13 Design Group, PLLC.
 519 Bennett Lane, Suite 203
 Lewisville, Texas 75057
 469-635-1900

Leonard W. Reese
 May 7, 2013

NORTH

1" = 20' - 0"

Bar is one inch on original drawing. If not one inch on this sheet, adjust scale as necessary.

One Inch

LANDSCAPE AND SCREENING

Landscape Plan
Black Walnut Cafe
 City of Coppell, Dallas County, Texas

PLAN REVIEW REVISIONS	BY	DATE
#		
0		

PROJECT
BAB003

SHEET
L1 of 2

