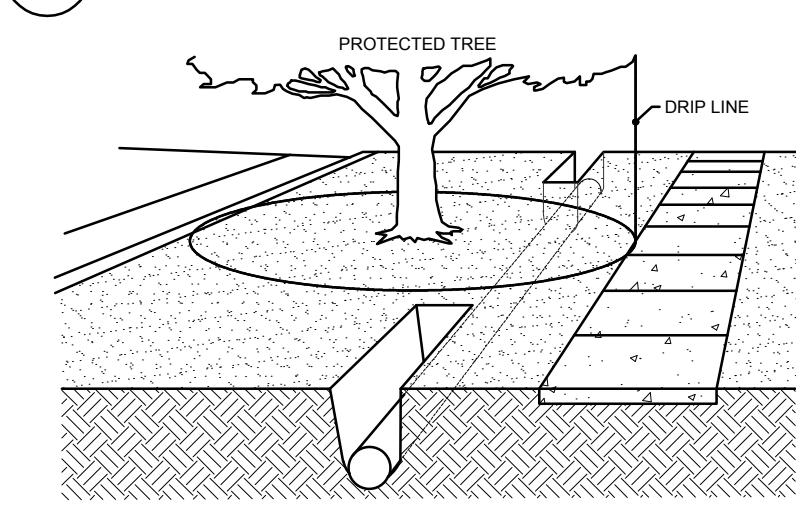
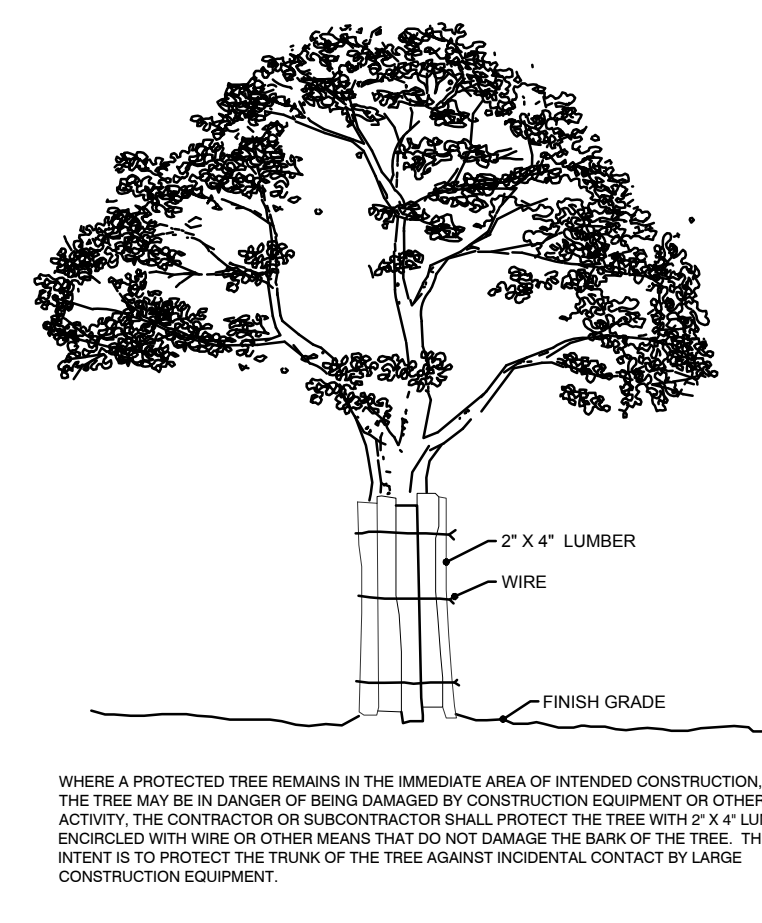


**1 TREE PROTECTION FENCING**  
N.T.S.



**2 BORING AND TUNNELING**  
N.T.S.



**3 BARK PROTECTION**  
N.T.S.

**TREE PRESERVATION NOTES**

**CONSTRUCTION METHODS:**

**BORING:** BORING OF UTILITIES UNDER PROTECTED TREES MAY BE REQUIRED. WHEN REQUIRED, THE MINIMUM LENGTH OF THE BORE SHALL BE THE WIDTH OF THE CRITICAL ROOT ZONE AND SHALL BE A MINIMUM DEPTH OF FORTY (40) INCHES.

**TRENCHING:** ALL TRENCHING SHALL BE DESIGNED TO AVOID TRENCHING ACROSS CRITICAL ROOT ZONES OF ANY PROTECTED TREE. THE PLACEMENT OF UNDERGROUND UTILITY LINES SUCH AS ELECTRIC, PHONE, GAS, ETC. IS ENCOURAGED TO BE LOCATED OUTSIDE THE CRITICAL ROOT ZONE. TRENCHING FOR IRRIGATION SYSTEMS SHALL BE PLACED OUTSIDE THE CRITICAL ROOT ZONE EXCEPT THE MINIMUM REQUIRED SINGLE HEAD SUPPLY LINE. THIS LINE IS ALLOWED TO EXTEND INTO THE CRITICAL ROOT ZONE PERPENDICULAR TO THE TREE TRUNK WITH THE LEAST POSSIBLE DISTURBANCE.

**TREES TO BE REMOVED:** ALL TREES TO BE REMOVED FROM THE SITE SHALL BE FLAGGED BY THE CONTRACTOR WITH BRIGHT RED VINYL TAPE WRAPPED AROUND THE MAIN TRUNK AT A HEIGHT OF FOUR (4) FEET ABOVE GRADE.

**TREES TO REMAIN:** ALL TREES TO REMAIN, AS NOTED ON DRAWINGS, SHALL HAVE PROTECTIVE FENCING LOCATED AT THE TREE'S DRIP LINE. THE PROTECTIVE FENCING SHALL BE LOCATED AS INDICATED ON THE TREE PROTECTION DETAIL.

**EXISTING TREES NOTED TO REMAIN SHALL BE PROTECTED DURING CONSTRUCTION FROM DAGE AND COMPACTION OF SOIL UNDER AND AROUND DRIP LINE OF TREE.**

**UNDER NO CIRCUMSTANCE SHALL THE CONTRACTOR PRUNE ANY PORTION OF THE DAMAGED TREE WITHOUT THE PRIOR APPROVAL BY THE OWNER'S AUTHORIZED REPRESENTATIVE.**

**PROHIBITED ACTIVITIES IN CRITICAL ROOT ZONE:** THE FOLLOWING ACTIVITIES ARE PROHIBITED IN THE AREAS NOTED AS THE CRITICAL ROOT ZONE:

**MATERIAL STORAGE:** NO MATERIALS INTENDED FOR USE IN CONSTRUCTION, OR WASTE MATERIALS ACCUMULATED DUE TO EXCAVATION OR DEMOLITION, SHALL BE PLACED WITHIN THE LIMITS OF THE CRITICAL ROOT ZONE OF ANY PROTECTED TREE.

**EQUIPMENT CLEANING/LIQUID DISPOSAL:** NO EQUIPMENT SHALL BE CLEANED, OR OTHER LIQUIDS DEPOSITED OR ALLOWED WITHIN THE LIMITS OF THE CRITICAL ROOT ZONE OF A PROTECTED TREE. THIS INCLUDES, WITHOUT LIMITATION, PAINT, OIL, SOLVENTS, ASPHALT, CONCRETE, MORTAR OR SIMILAR MATERIALS.

**TREE ATTACHMENTS:** NO SIGNS, WIRES, OR OTHER ATTACHMENTS, OTHER THAN THOSE OF A PROTECTIVE NATURE, SHALL BE ATTACHED TO ANY PROTECTED TREE.

**VEHICULAR TRAFFIC:** NO VEHICULAR AND/OR CONSTRUCTION, EQUIPMENT, TRAFFIC, OR PARKING SHALL TAKE PLACE WITHIN THE LIMITS OF THE CRITICAL ROOT ZONE OF ANY PROTECTED TREE OTHER THAN ON EXISTING STREET PAVEMENT.

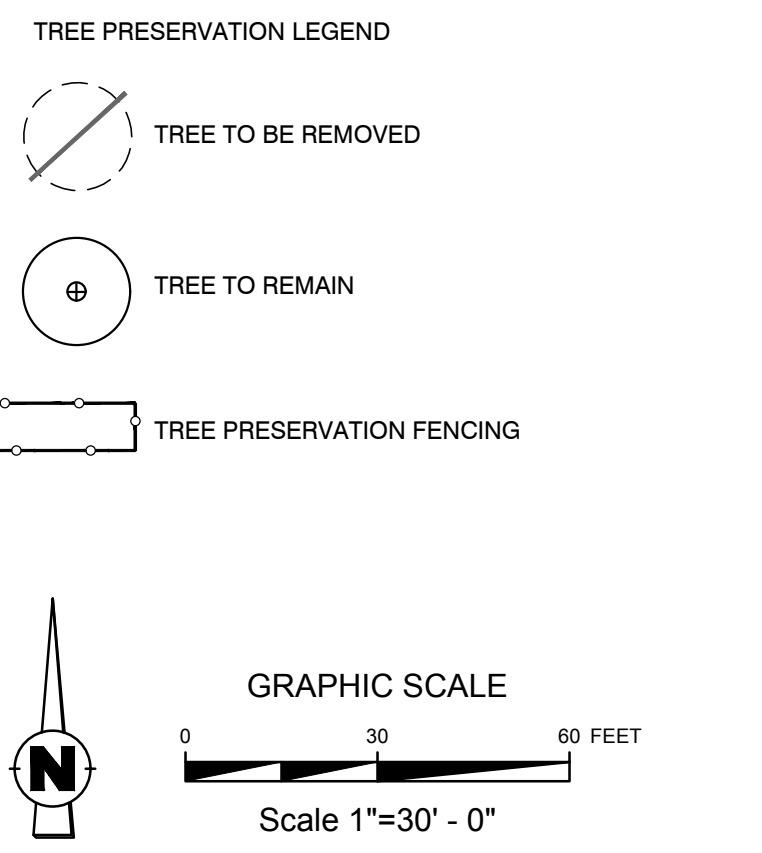
**GRADE CHANGES:** A MINIMUM OF 75% OF THE DRIP LINE AND ROOT ZONE SHALL BE PRESERVED AT NATURAL GRADE. ANY FINE GRADING DONE WITHIN THE CRITICAL ROOT ZONES OF THE PROTECTED TREES MUST BE DONE WITH LIGHT MACHINERY SUCH AS A BOBCAT OR LIGHT TRACTOR. NO EARTH MOVING EQUIPMENT WITH TRACKS IS ALLOWED WITHIN THE CRITICAL ROOT ZONE OF THE TREES.

**PROCEDURES REQUIRED PRIOR TO CONSTRUCTION:** PROTECTIVE FENCING: PRIOR TO CONSTRUCTION, THE CONTRACTOR OR SUBCONTRACTOR SHALL CONSTRUCT AND MAINTAIN, FOR EACH PROTECTED TREE ON A CONSTRUCTION SITE, A PROTECTIVE FENCING WHICH ENCIRCLES THE OUTER LIMITS OF THE CRITICAL ROOT ZONE OF THE TREE TO PROTECT IT FROM CONSTRUCTION ACTIVITY. ALL PROTECTIVE FENCING SHALL BE IN PLACE PRIOR TO COMMENCEMENT OF ANY SITE WORK, AND REMAIN IN PLACE UNTIL ALL EXTERIOR WORK HAS BEEN COMPLETED.

**BARK PROTECTION:** IN SITUATIONS WHERE A PROTECTED TREE REMAINS IN THE IMMEDIATE AREA OF INTENDED CONSTRUCTION, AND THE LANDSCAPE ARCHITECT OR OWNER'S REPRESENTATIVE DETERMINES THE TREE BARK TO BE IN DANGER OF DAMAGE BY CONSTRUCTION EQUIPMENT OR OTHER ACTIVITY, THE CONTRACTOR OR SUBCONTRACTOR SHALL PROTECT THE TREE BY ENCLOSING THE ENTIRE CIRCUMFERENCE OF THE TREE WITH 2"x4\"/>

EXISTING TREE						
NO.	CALIPER	TREE SPECIES	REMAIN/REMOVE	PROTECTED?	CREDIT MIT	REQUIRED NOTES
1	16	CEDAR ELM	TO REMAIN	YES	16	
2	12	PINE	TO REMAIN	YES	12	
3	40	CEDAR TREE	TO REMAIN	YES	40	
4	20	CEDAR TREE	TO REMAIN	YES	20	
5	14	CEDAR TREE	TO REMAIN	YES	14	
6	12	CEDAR TREE	TO REMAIN	YES	12	
7	12	CEDAR TREE	TO REMAIN	YES	12	
8	13	CEDAR TREE	TO REMAIN	YES	13	
9	10	CEDAR TREE	TO REMAIN	YES	10	
10	10	CEDAR TREE	TO REMAIN	YES	10	
14	14	CEDAR TREE	TO REMAIN	YES	14	
15	13	CEDAR TREE	TO REMAIN	YES	13	
16	15	CEDAR TREE	TO REMAIN	YES	15	
17	20	CEDAR TREE	TO REMAIN	YES	20	
18	36	CEDAR TREE	TO REMAIN	YES	36	
19	12	CEDAR TREE	TO REMAIN	YES	12	
20	40	CEDAR TREE	TO REMAIN	YES	40	
21	24	CEDAR ELM	TO REMAIN	YES	24	
22	36	CEDAR ELM	TO REMAIN			NOT ON PROPERTY
23	36	CEDAR ELM	TO REMAIN			NOT ON PROPERTY
24	18	CEDAR ELM	TO REMAIN	YES	18	
25	14	CEDAR ELM	TO REMAIN	YES	14	
26	16	AMERICAN ELM	TO REMAIN			NOT ON PROPERTY
27	18	CEDAR ELM	TO REMAIN			NOT ON PROPERTY
28	18	CEDAR ELM	TO REMAIN	YES	18	
29	24	CEDAR ELM	TO REMAIN			NOT ON PROPERTY
30	28	CEDAR ELM	TO REMAIN	YES	28	
31	38	CEDAR ELM	TO REMAIN			NOT ON PROPERTY
32	14	CEDAR ELM	TO REMAIN	YES	14	
33	14	CEDAR ELM	TO REMAIN	YES	14	
34	14	CEDAR TREE	TO REMAIN	YES	14	

TOTAL ON SITE	453
TOTAL TO BE REMOVED	0
TOTAL TREE INCHES REQUIRED FOR MITIGATION	0
TREE CREDIT FROM PRESERVATION	453
TREE CREDIT FROM PLANTING (3" caliper trees)	(28 trees @ 3" each) = 84 inches
TOTAL MITIGATION FEE = " X \$200"	\$0.00



DATE	REVISIONS

**Manhard CONSULTING**  
414 Union St. Suite 1911, Nashville, TN 37203, PH: 615.698.6301 manhard.com  
Civil Engineers | Surveyors | Water Resource Engineers | Water & Waste Water Engineers  
Construction Managers | Environmental Scientists | Landscape Architects | Planners  
Tennessee Board of Professional Engineers & Land Surveyors Reg. No. F-10667

**ESTRADA CONCRETE**  
1760 EAST BELT LINE ROAD  
TREE PRESERVATION PLAN

**AWR** AWR Designs, LLC  
P.O. Box 1746  
Aledo, Texas 76608  
amanandesigns@designs.com  
c. 512.517.5589

PROJ. MGR.: JG  
PROJ. ASSOC.: CA  
DRAWN BY:  
DATE: 04/01/2026

SHEET  
**L1.1**

© 2026 MANHARD CONSULTING, ALL RIGHTS RESERVED.

PENDING