


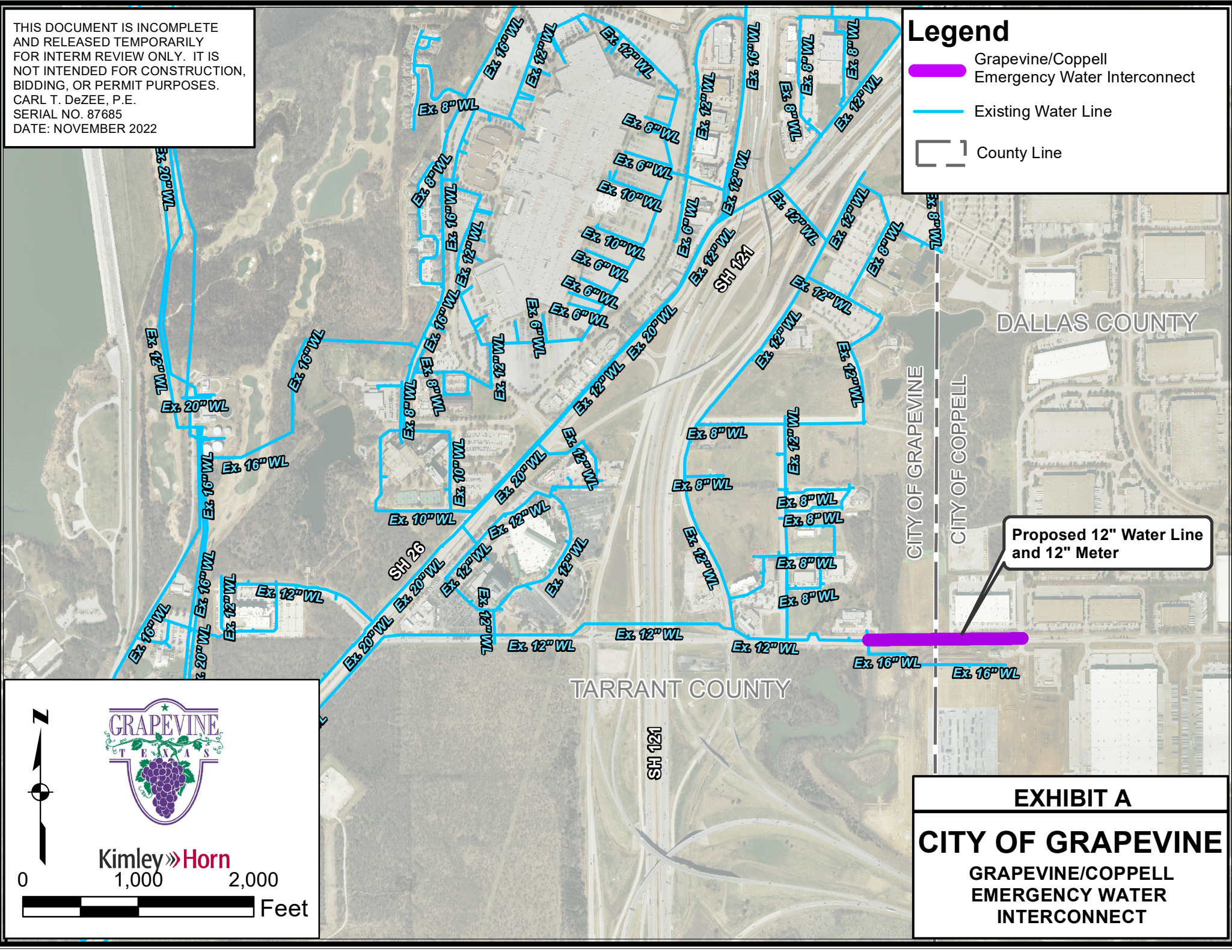




THIS DOCUMENT IS INCOMPLETE AND RELEASED TEMPORARILY FOR INTERM REVIEW ONLY. IT IS NOT INTENDED FOR CONSTRUCTION, BIDDING, OR PERMIT PURPOSES. CARL T. DeZEE, P.E. SERIAL NO. 87685 DATE: NOVEMBER 2022

### Legend


-  Grapevine/Coppell Emergency Water Interconnect
-  Existing Water Line
-  County Line



Proposed 12" Water Line and 12" Meter

Kimley >> Horn



0 1,000 2,000 Feet

**EXHIBIT A**

**CITY OF GRAPEVINE**

GRAPEVINE/COPPELL  
EMERGENCY WATER  
INTERCONNECT