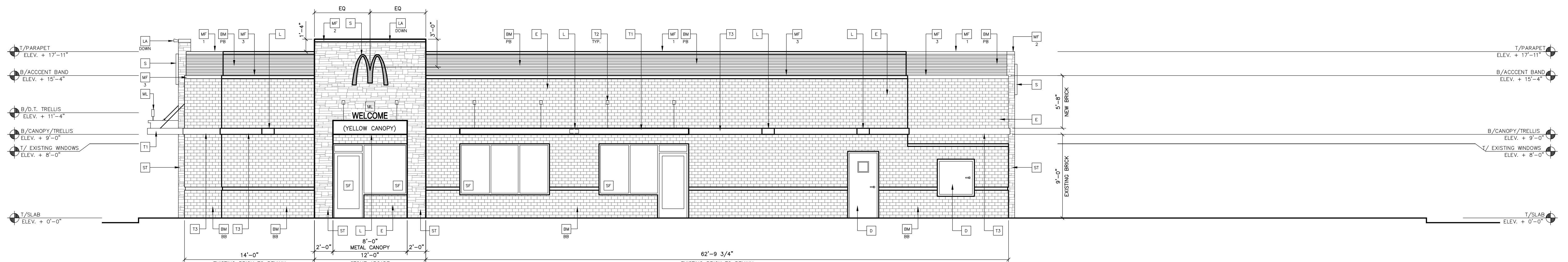
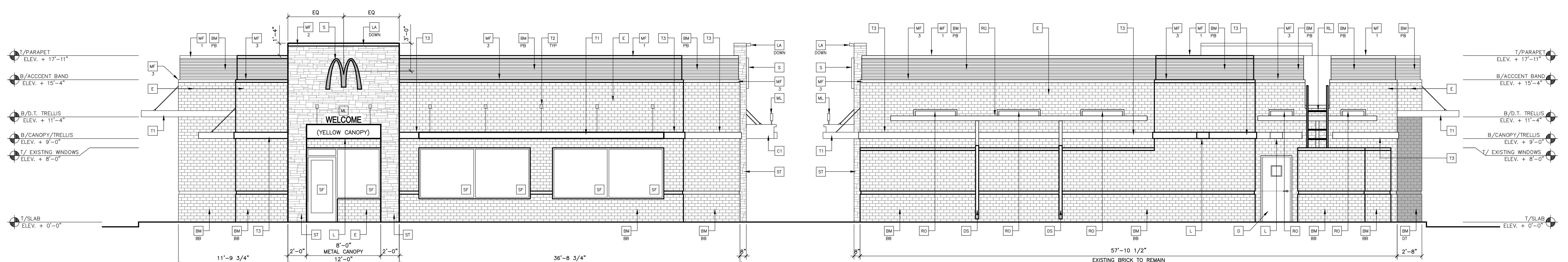


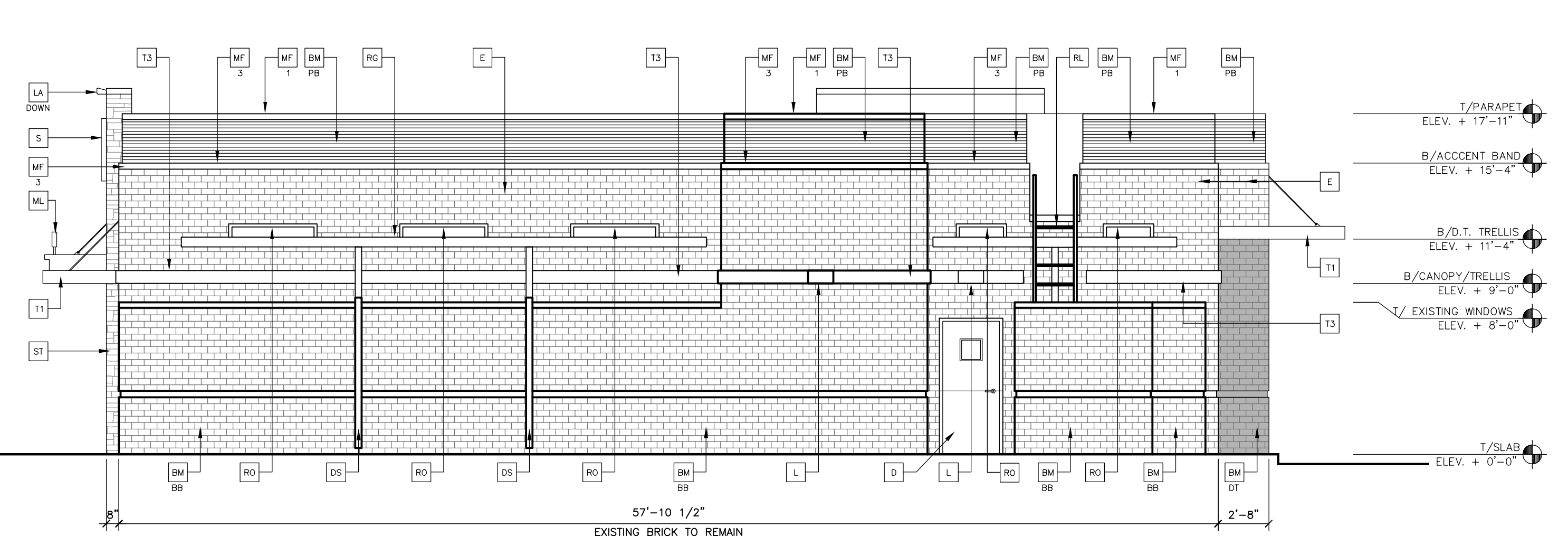
1 DRIVE THRU ELEVATION
A2.0 3/16" = 1'-0"



2 NON-DRIVE THRU ELEVATION
A2.0 3/16" = 1'-0"



3 FRONT ELEVATION
A2.0 3/16" = 1'-0"



4 BACK ELEVATION
A2.0 3/16" = 1'-0"

KEY NOTES:

- BB BREAK METAL COVER OVER 2X WOOD FRAMING, MATCH EXISTING STOREFRONT SYSTEM
- BM BUILDING MATERIAL
- CA ALUMINUM CANOPY SYSTEM (COLOR: YELLOW)
- C2 ALUMINUM CANOPY TIE-BACK SYSTEM
- CJ CONTROL JOINT
- CM CORRUGATED METAL PANEL - SEE 1B/AS.0 COLOR = CITYSCAPE BY METAL-ERA
- D HOLLOW METAL DOOR - PAINT TO MATCH COLOR OF SURROUNDING MATERIAL
- DS DOWN SPOUT - COVER ROOF DRAIN PIPING W/ BREAK METAL TO MATCH BASE BUILDING
- E NEW BRICK TO MATCH EXISTING
- FB CO2 = BULK CO2 FILL BOX (EQPM SCHEDULE ITEM 49.00) BO = BULK OIL FILL BOX (EQPM SCHEDULE ITEM 700.18) CONFIRM USE WITH MCD PROJECT MANAGER
- GR GUARD RAIL - SEE SITE PLAN FOR EXACT LOCATION AND LENGTH
- L LIGHT FIXTURE (WALL SCONCE) - SEE ELECTRICAL
- LA ACCENT LIGHTING - SEE ELECTRICAL
- LED LIGHT: UP/DOWN = UP AND DOWN FIXTURE DOWN = DOWN ONLY FIXTURE CAN = INTEGRAL CANOPY FIXTURE UP = UP ONLY FIXTURE
- LO ALUMINUM SUNSCREEN LOUVER SYSTEM
- ML METAL LETTERING - BY OTHERS
- MF METAL FASCIA - COLOR TO MATCH CORRUGATED METAL PANEL - SEE 1/AS.0
- TYPE: 1 = PRE-FAB ANCHOR-TITE FASCIA 2 = PRE-FAB CUSTOM ARCADE FASCIA 3 = PRE-FAB MASONRY CAP FASCIA
- PB PIPE BOLLARD - PAINTED YELLOW (RHM) COIN COLLECTOR UNIT #WPT 012000 STD CALL 1-888-743-7435 TO ORDER
- PT (RHM) COIN COLLECTOR UNIT #WPT 012000 STD CALL 1-888-743-7435 TO ORDER
- RE ROOF CAP ELEMENT BY OTHERS
- RL EXISTING ROOF LADDER, PAINT TO MATCH BASE BUILDING
- RO ROOF DRAIN OVERFLOW PIPE PAINT TO MATCH SURROUNDING MATERIAL
- S McDONALD'S SIGNAGE BY OTHERS - UNDER SEPARATE PERMIT.
- SF NEW STORE FRONT & GLAZING
- ST CULTURED STONE VENEER BY BORAL "PRO FIT LEDGESTONE" COLOR: SOUTHWEST
- T1 ALUMINUM TRELLIS SYSTEM
- T2 TRELLIS TIE-BACK SYSTEM
- T3 ALUMINUM TRELLIS 2" x 8" WALL FASCIA SYSTEM - REFER TO SIM. DETAIL 3 ON SHEET AS.1
- W1 EXTERIOR WINDOW ASSEMBLY - TEMPERED GLASS - SEE ASSEMBLY NOTES
- W2 DRIVE-THRU WINDOW BY READY ACCESS 275 SERIES. 36" SERVICE HEIGHT WITH TRANSOM - CONFIRM OPTIONS WITH MCD AREA CONSTRUCTION MANAGER
- XX SLIDE DIRECTION: RL = RIGHT TO LEFT LR = LEFT TO RIGHT

COLOR LEGEND (ALL COLORS ARE PER BENJAMIN MOORE PAINTS, U.N.O.)

LOG CABIN SCHEME	ARCADES & HEARTH	CULTURED STONE, BY BORAL PRO FIT LEDGESTONE COLOR: SOUTHWEST
	BASE BUILDING	LOG CABIN #BM-2163-10 (PAINT EXISTING/NEW MASONRY)
	DRIVE THRU BANDING	CHOCOLATE CANDY BROWN #BM-2107-10 (PAINT EXISTING/NEW MASONRY)
	PARAPET BAND	METAL ERA "S" PANEL (7/8" PROFILE) 24 GAUGE, COLOR-CITYSCAPE

CITY COMMENTS

03/05/13

1

REV DATE DESCRIPTION

REGISTERED ARCHITECT
BENJAMIN WILLIAMS
1920
STATE OF TEXAS

SIGNED/SEALED ON 03/05/13

ROGUE ARCHITECTS

513 MAIN STREET, SUITE 200
FORT WORTH, TEXAS 76102
817.820.0433 or 817.705.3387 C

2011 McDonald's USA, LLC

McDonald's USA, LLC

These drawings and specifications are the confidential and proprietary property of McDonald's USA, LLC and shall not be copied or reproduced without written authorization. The contract documents were prepared not suitable for use on a different site or at a later time. Use of these drawings for reference or example on another project requires the contract documents for reuse on another project is not authorized.

PREPARED FOR:

DRAWN BY: ROGUE

ISSUE DATE: 2012

REVIEWED BY: USRD TEAM

DATE ISSUED: 2012

TITLE: LTRS MAJOR REMODEL PROGRAM

DESCRIPTION: CONSTRUCTION DOCUMENTS

ROGUE PROJECT 12-0047

SITE ADDRESS: 125 SOUTH DENTON TAP ROAD, COPPELL, TX

ISSUE DATE: 02/06/13

A2.0

ELEVATIONS

