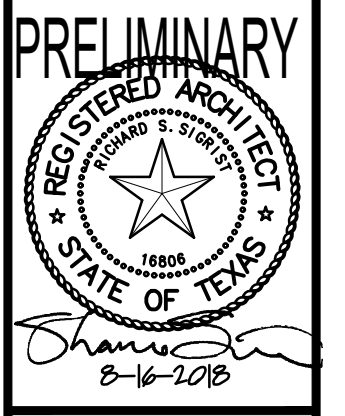


PRELIMINARY - FOR REVIEW ONLY

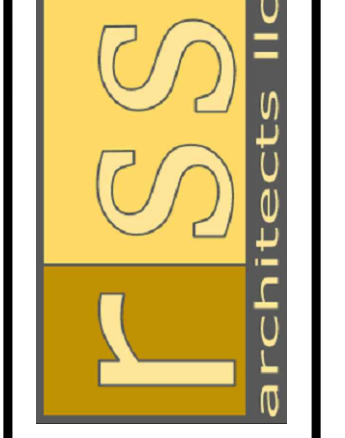
REVISIONS	BY

HOTEL PROJECT
 Dividend Blvd. & Point W. Blvd. (Near 635)
 Coppell, Texas

HOMEWOOD SUITES
 Hilton



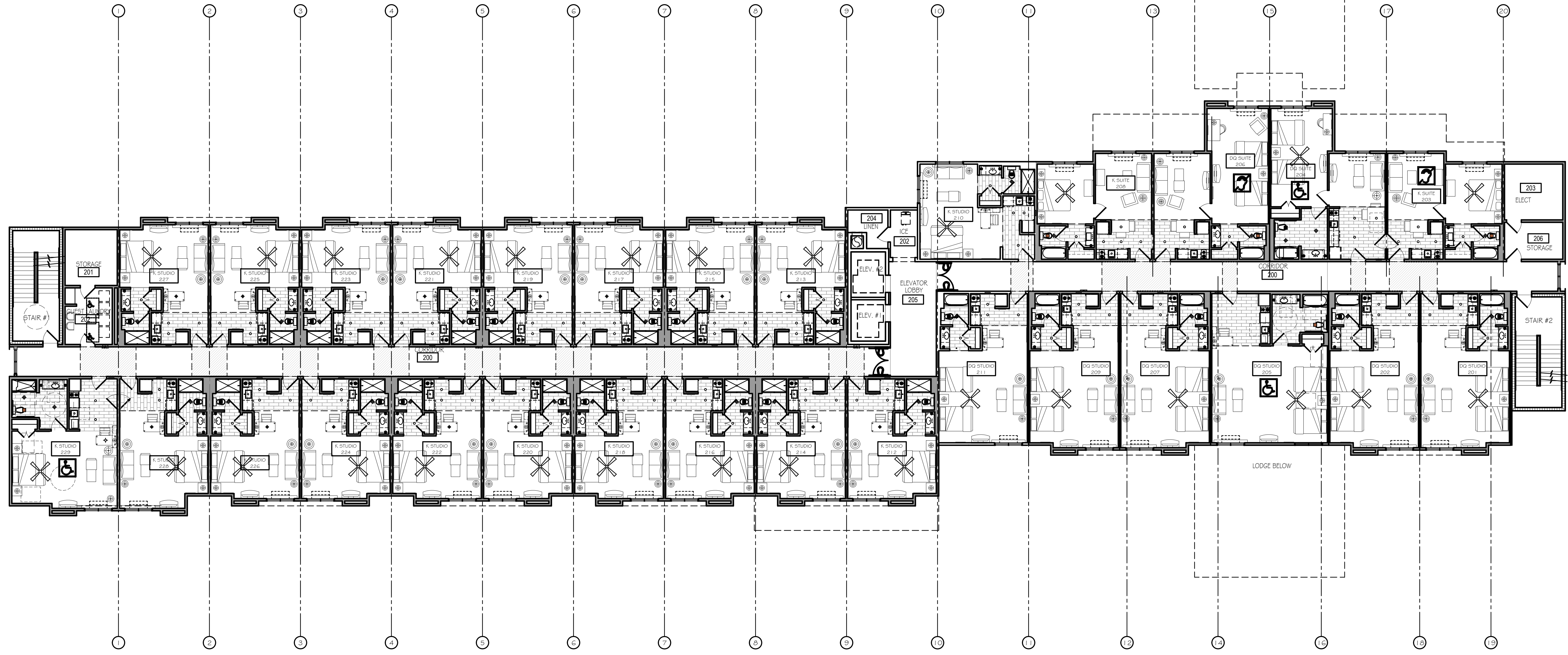
1029 LONG PRAIRIE ROAD
 SUITE E
 FLOWER MOUND, TX 75022
 817/538-9258
 RSS-ARCHITECTS.COM



Date: 8-16-2018
 Job: 17078
 Sheet:

A-302

Exhibit F



1 2ND thru 5TH FLOOR PLAN
 SCALE: 1/8" = 1'-0"

