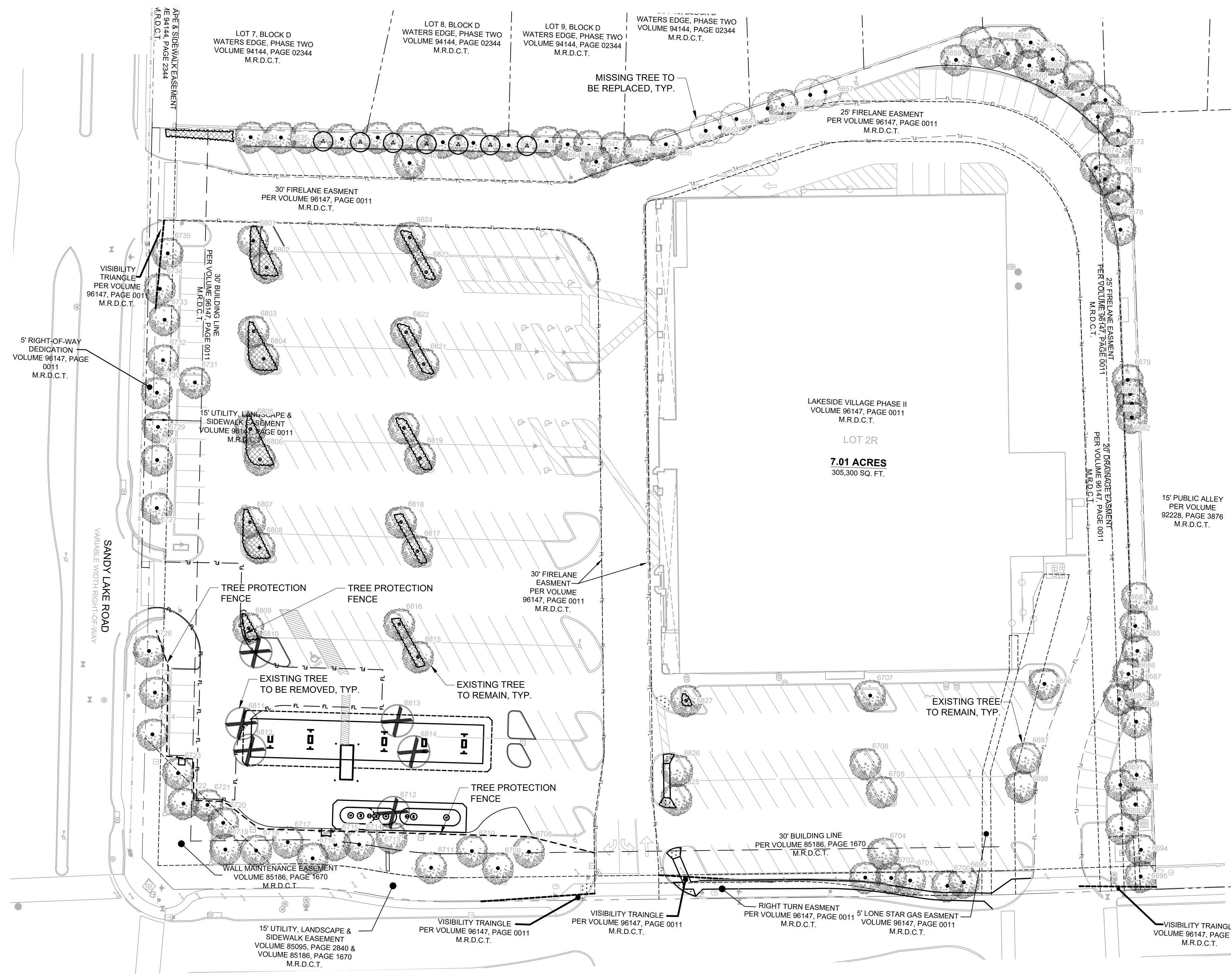


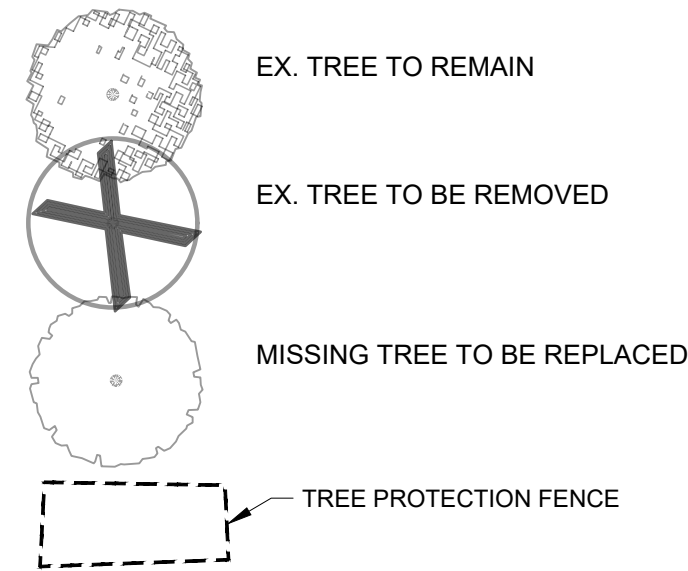
Table with columns: No., DATE, REVISION, BY

TREE INVENTORY

Table with columns: TAG, SIZE (DBH), COMMON/SCIENTIFIC NAME, CROWN CLASS, % CROWN RATIO, CANOPY POINTS (N, E, S, W), TREE HEIGHT



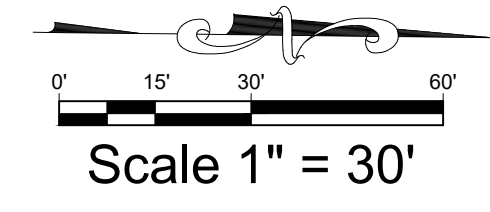
EXISTING TREE LEGEND



TREE CALCULATIONS

REQUIRED REPLACEMENT RATIOS: PROTECTED TREES 1:1 # OF PROTECTED TREES 6 = 51* MITIGATION FOR 51* OF PROTECTED TREES REMOVED IS BY: 25" @ \$100 = \$2,500 26"-9" = 17" @ \$200 = \$3,400 TOTAL = \$5,900 PAYMENT OF (\$5,900) WILL BE MADE TO THE CITY REFORESTATION AND NATURAL AREA FUND.

NOTE: APPROVAL FROM THE CHIEF ARBORIST IS REQUIRED BEFORE ANY TREES MAY BE REMOVED DURING DEMOLITION OR CONSTRUCTION.



NOTE: TREE PROTECTION FOR ANY PRESERVED OR RELOCATED TREES MUST BE PROVIDED PER DETAILS AND SPECIFICATIONS ON SHEET TD-3. THESE MUST BE UP PRIOR TO THE COMMENCEMENT OF ANY WORK AND MAINTAINED THROUGHOUT CONSTRUCTION.

NOTE: ALL TREE TRIMMING MUST BE APPROVED BY THE OWNER AND LOCAL JURISDICTION PRIOR TO COMMENCEMENT OF WORK. ALL TREE TRIMMING MUST BE DONE BY AN ISA CERTIFIED ARBORIST IN ACCORDANCE WITH LOCAL TREE PRESERVATION ORDINANCE.

EVERGREEN DESIGN GROUP (800) 680-6630 15455 Dallas Pkwy., Ste 600 Addison, TX 75001 www.EvergreenDesignGroup.com

PLOTTED BY: ERIC SHEPLEY 7/17/2023 8:32 AM PLOT DATE: 7/17/2023 8:32 AM C:\USERS\ESHEP\EDG_DROPBOX\EDG - SHARED\2022\KROGER - COPPELL TX\KROGER FUEL COPPELL 2023-07-17.DWG LAST SAVED: 7/17/2023 7:40 AM