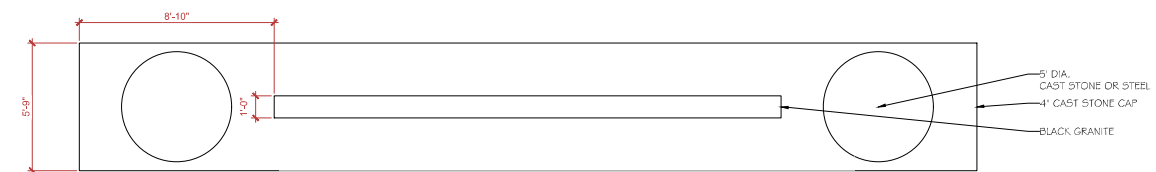


Scale: 1/4" = 1'-0"

ENTRY GATE (B)



CHOPPED LUEDERS STONE REFERENCE IMAGE



PLAN



ELEVATION

ENTRY SIGN LETTERING
LASER CUT STEEL GOLD LETTERING

Scale: 1/4" = 1'-0"

ENTRY SIGN (A)

BLACKBERRY FARM
1011 BLACKBERRY DRIVE, COPPELL, TX

SHEET TITLE

DETAILS

SHEET NO.

03

PROJECT NUMBER: 23079
ISSUE DATE: 09.27.2023
SHEET SIZE: 24"X36"

BLOUNT|DESIGNS



**HOLMES
COMMERCIAL**

225 East Highway 121
Suite 120
Coppell, Texas 75019
214.448.5200 TEL.
214.448-5255 FAX

USE OF THESE DOCUMENTS

COPYRIGHT 2023 BY THBGP, INC. ON BEHALF OF HOLMES COMMERCIAL. THE SEASON DRAWINGS, SPECIFICATIONS AND ALL OTHER DOCUMENTS PREPARED BY THBGP, INC. AND/OR HOLMES COMMERCIAL ARE INSTRUMENTS OF SERVICE. THBGP, INC. SHALL BE DEEMED THE AUTHOR OF THESE DOCUMENTS AND RETAINS ALL STATUTORY COMMON LAW AND OTHER RESERVED RIGHTS INCLUDING COPYRIGHT, THE ARCHITECTURAL DESIGN, SKETCHES, SPECIFICATIONS AND ALL OTHER DOCUMENTS PREPARED BY THBGP, INC. AND/OR SHALL NOT BE REPRODUCED OR TRANSMITTED IN ANY FORM OR BY ANY MEANS, ELECTRONIC OR MECHANICAL, INCLUDING PHOTOCOPYING, RECORDING, OR BY ANY INFORMATION STORAGE AND RETRIEVAL SYSTEM, WITHOUT THE WRITTEN PERMISSION FROM THBGP, INC. ON BEHALF OF HOLMES COMMERCIAL.

The Walls At Blackberry Farm
1011 Blackberry Drive
Lot 2X Block C
Blackberry Farm
Coppell, Texas

DRAWN BY
JEFFERY DING

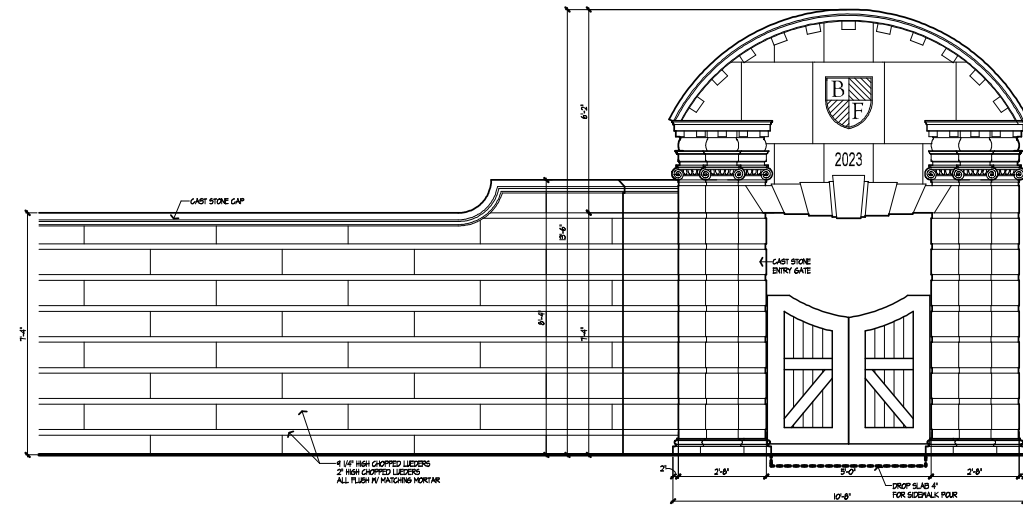
CHECKED BY
TERRY HOLMES

DATE
09-12-2023

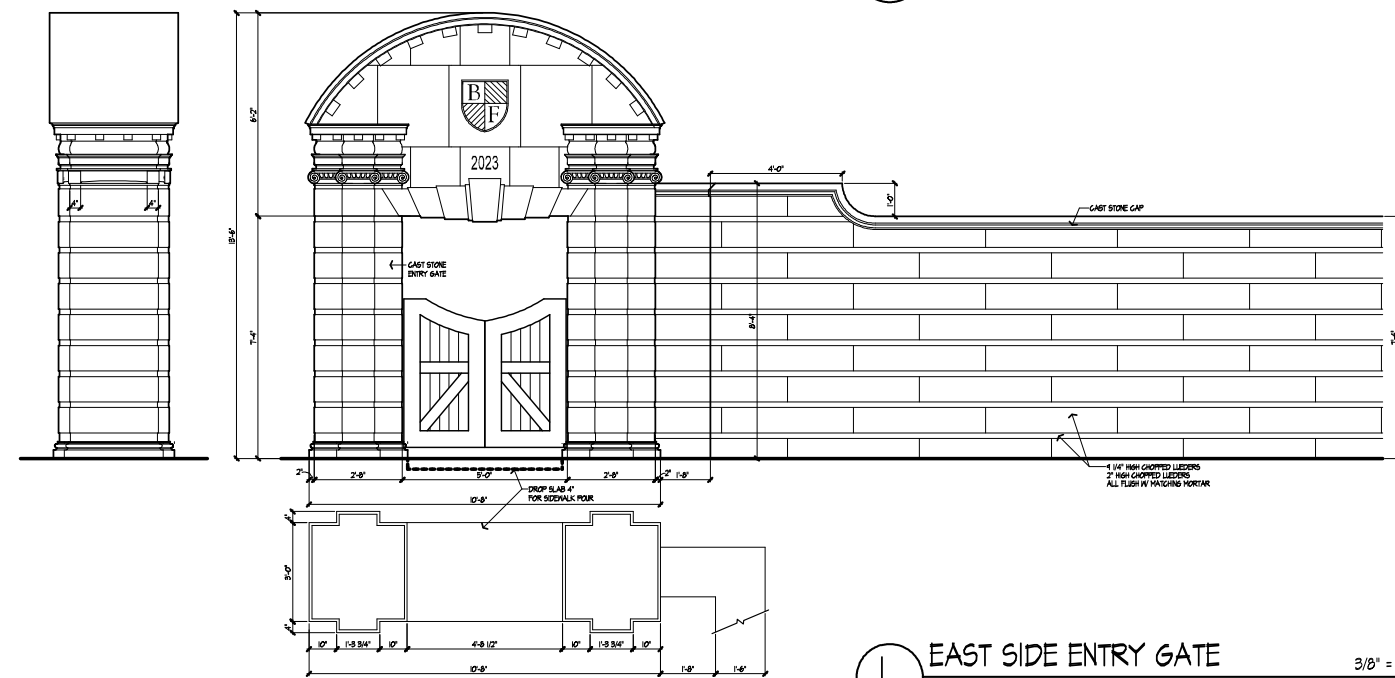
- REVISIONS
- 1.
 - 2.
 - 3.
 - 4.
 - 5.

SHEET NUMBER
A4-1

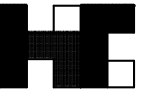
PROJECT NUMBER
22014



2 WEST SIDE ENTRY GATE 3/8" = 1'-0"



1 EAST SIDE ENTRY GATE 3/8" = 1'-0"

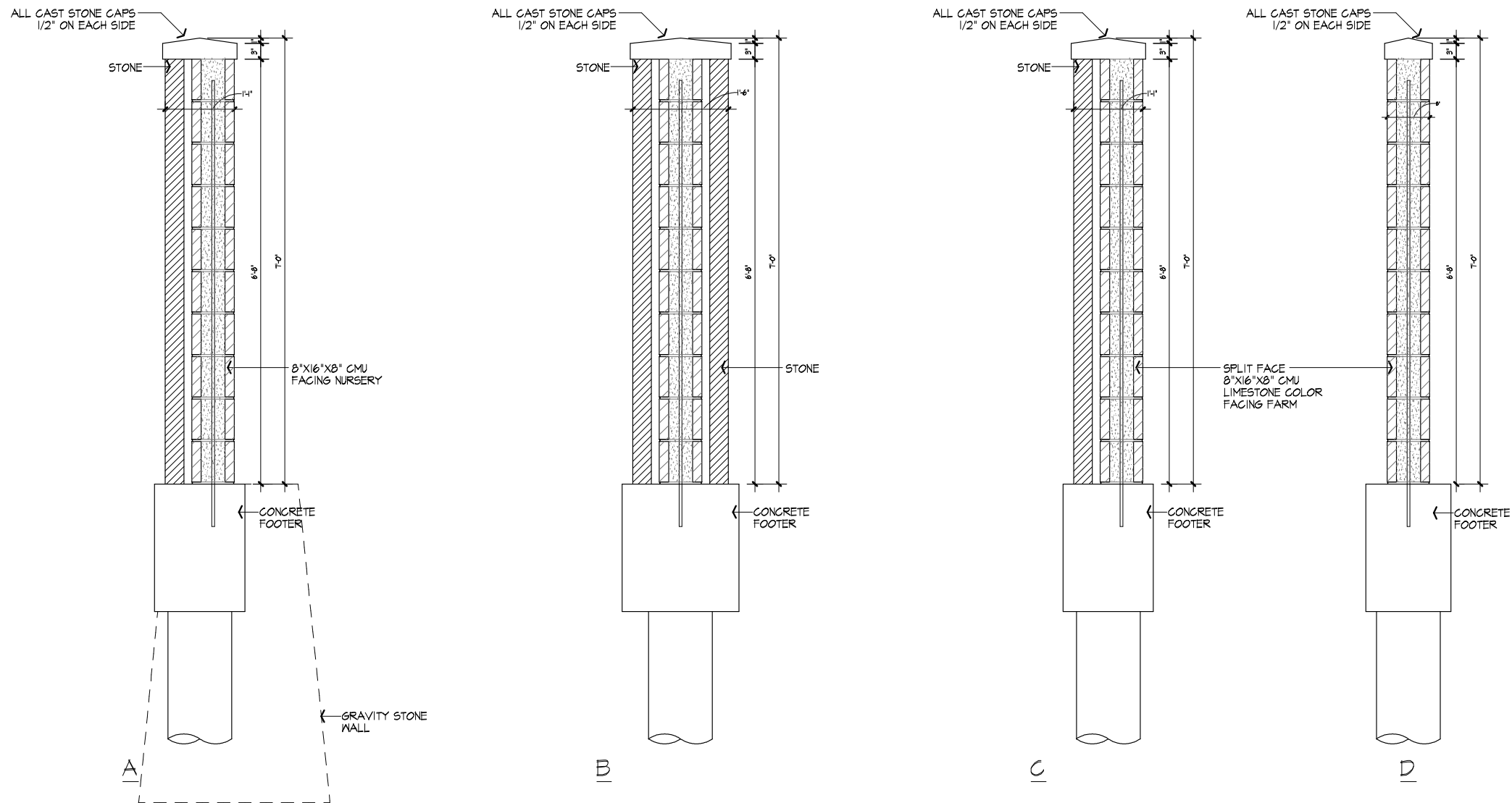


**HOLMES
COMMERCIAL**

225 East Highway 121
Suite 120
Coppell, Texas 75019
214.448.5200 TEL.
214.448-5255 FAX

USE OF THESE DOCUMENTS

COPYRIGHT 2023 BY THBGP, INC. ON BEHALF OF HOLMES COMMERCIAL. THE SEVERAL DRAWINGS, SPECIFICATIONS AND ALL OTHER DOCUMENTS PREPARED BY THBGP, INC. AND/OR HOLMES COMMERCIAL ARE INSTRUMENTS OF SERVICE. THBGP, INC. SHALL BE DEEMED THE AUTHOR OF THESE DOCUMENTS AND RETAINS ALL STATUTORY COMMON LAW AND OTHER RESERVED RIGHTS INCLUDING COPYRIGHT, THE ARCHITECTURAL DESIGN, SKETCHES, SPECIFICATIONS AND ALL OTHER DOCUMENTS PREPARED BY THBGP, INC. AND/OR SHALL NOT BE REPRODUCED OR TRANSMITTED IN ANY FORM OR BY ANY MEANS, ELECTRONIC OR MECHANICAL, INCLUDING PHOTOCOPYING, RECORDING, OR BY ANY INFORMATION STORAGE AND RETRIEVAL SYSTEM, WITHOUT THE WRITTEN PERMISSION FROM THBGP, INC. ON BEHALF OF HOLMES COMMERCIAL.



① TYPICAL WALL SECTION 1" = 1'-0"

The Walls At Blackberry Farm
1011 Blackberry Drive
Lot 2X Block C
Blackberry Farm
Coppell, Texas

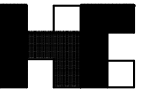
DRAWN BY
JEFFERY DING
CHECKED BY
TERRY HOLMES

DATE
09-12-2023

- REVISIONS
- 1.
 - 2.
 - 3.
 - 4.
 - 5.

SHEET NUMBER
A4-2

PROJECT NUMBER
22014



**HOLMES
COMMERCIAL**

225 East Highway 121
Suite 120
Coppell, Texas 75019
214.448.5200 TEL.
214.448-5255 FAX

USE OF THESE DOCUMENTS

COPYRIGHT 2023 BY THBGP, INC. ON BEHALF OF HOLMES COMMERCIAL. ALL RIGHTS RESERVED. THESE DRAWINGS, SPECIFICATIONS AND ALL OTHER DOCUMENTS PREPARED BY THBGP, INC. AND/OR HOLMES COMMERCIAL ARE INSTRUMENTS OF SERVICE. THBGP, INC. SHALL BE DEEMED THE AUTHOR OF THESE DOCUMENTS AND RETAINS ALL STATUTORY, COMMON LAW, AND OTHER RESERVED RIGHTS INCLUDING COPYRIGHT, THE ARCHITECTURAL DESIGN, SKETCHES, SPECIFICATIONS AND ALL OTHER DOCUMENTS PREPARED BY THBGP, INC. AND/OR SHALL NOT BE REPRODUCED OR TRANSMITTED IN ANY FORM OR BY ANY MEANS, ELECTRONIC OR MECHANICAL, INCLUDING PHOTOCOPYING, RECORDING, OR BY ANY INFORMATION STORAGE AND RETRIEVAL SYSTEM, WITHOUT THE EXPRESS WRITTEN PERMISSION FROM THBGP, INC. ON BEHALF OF HOLMES COMMERCIAL.

The Walls At Blackberry Farm
1011 Blackberry Drive
Lot 2X Block C
Blackberry Farm
Coppell, Texas

DRAWN BY
JEFFERY DING

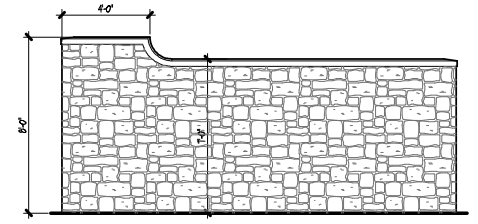
CHECKED BY
TERRY HOLMES

DATE
09-12-2023

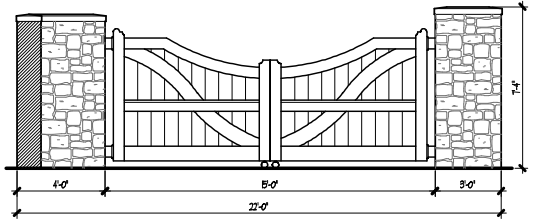
- REVISIONS
- 1.
 - 2.
 - 3.
 - 4.
 - 5.

SHEET NUMBER
A4-3

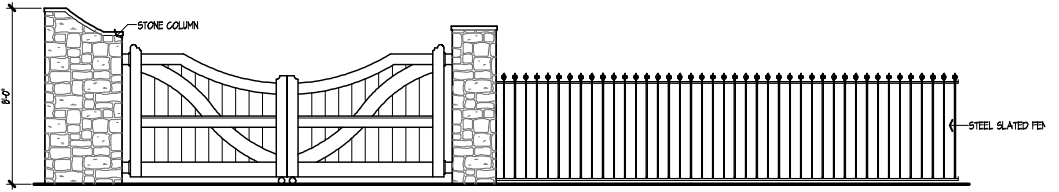
PROJECT NUMBER
22014



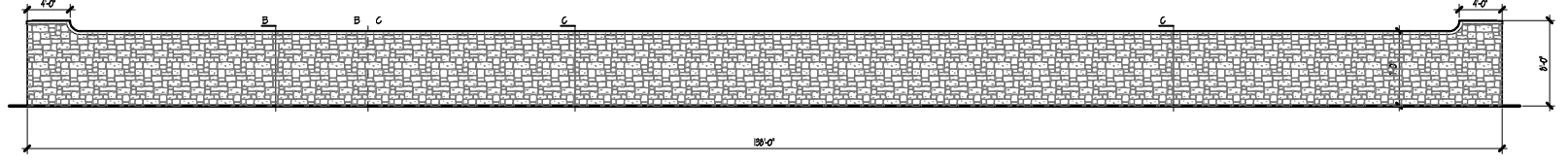
VIEW FROM ALLEY
5 STONE WALL ELEVATION 1/4" = 1'-0"



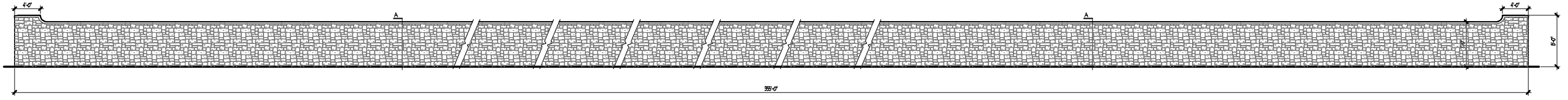
ALLEY AT SANDY LAKE ROAD
4 GATE ELEVATION 1/4" = 1'-0"



ALLEY AT BLACKBERRY
3 GATE ELEVATION 1/4" = 1'-0"



2 STONE WALL ELEVATION 1/8" = 1'-0"



1 STONE WALL ELEVATION 1/8" = 1'-0"