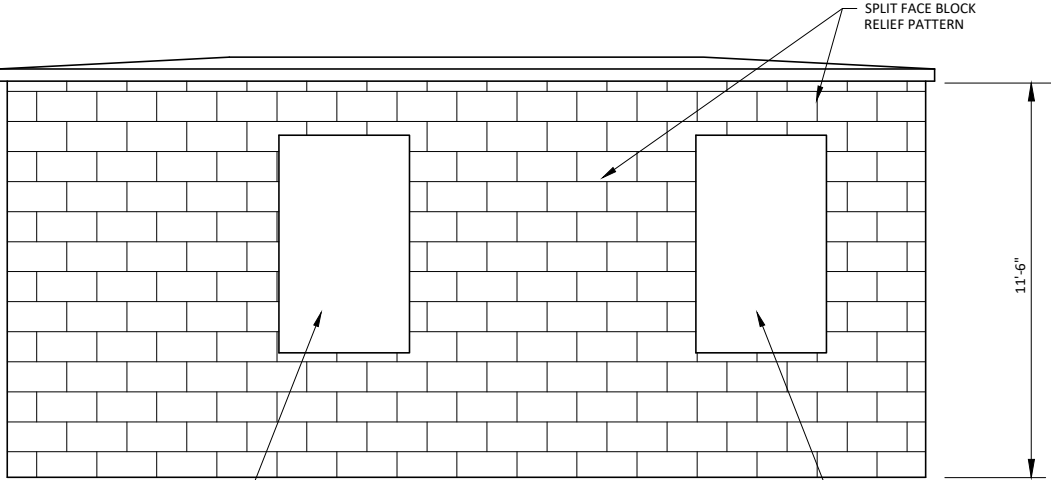


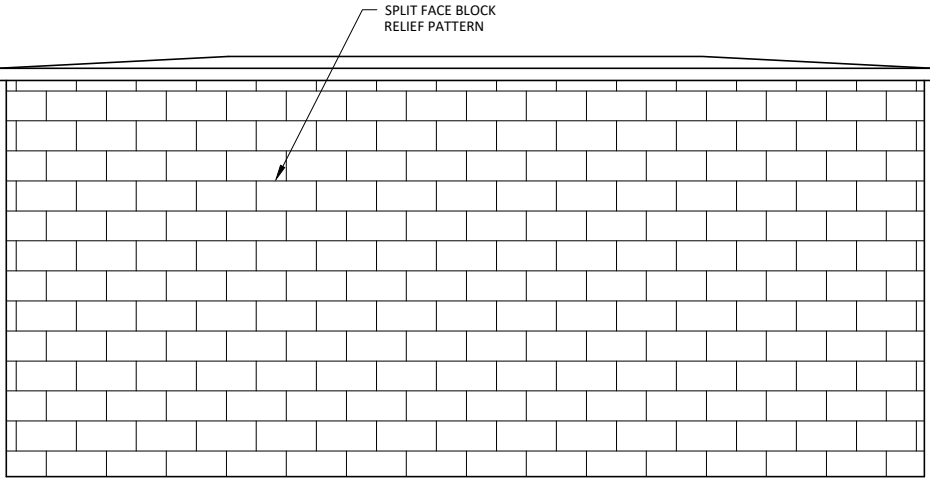
PLAN

SCALE: 3/8" = 1'-0"



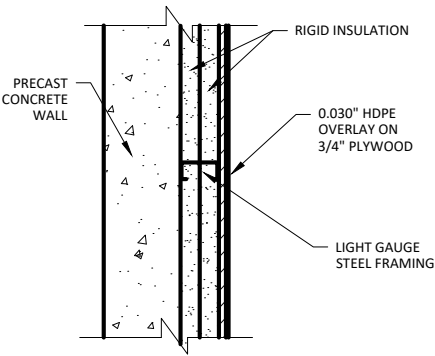
EAST ELEVATION

SCALE: 3/8" = 1'-0"



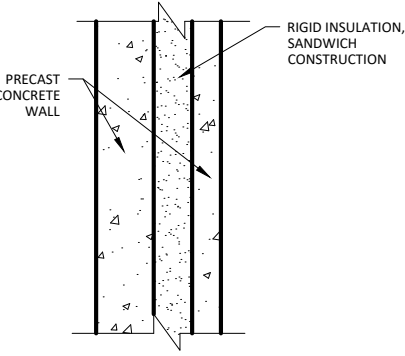
WEST ELEVATION

SCALE: 3/8" = 1'-0"



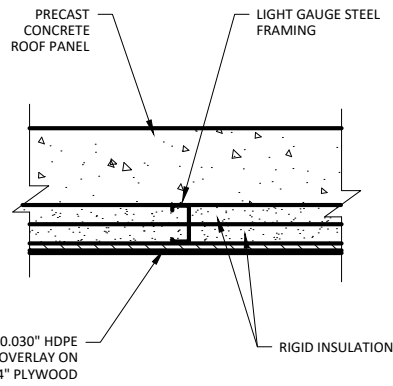
TYPE "A" WALL SECTION

NTS



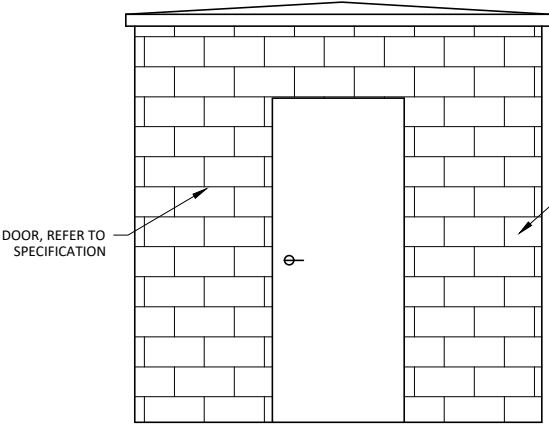
TYPE "B" WALL SECTION

NTS



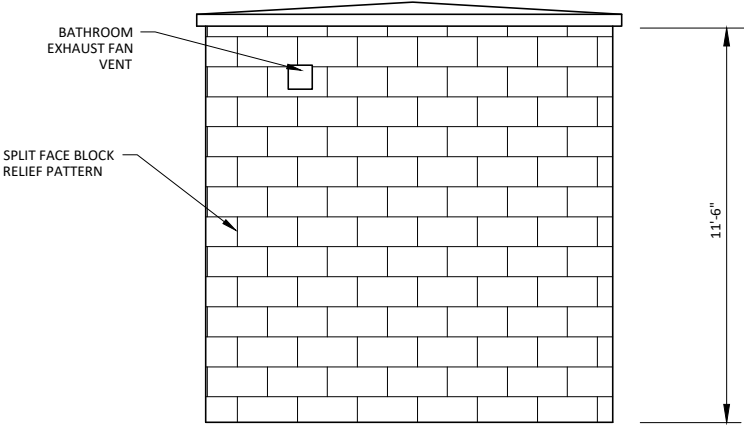
ROOF/CEILING SECTION

NTS



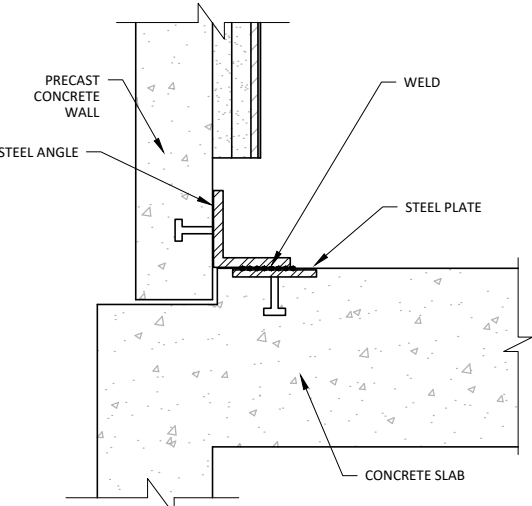
NORTH ELEVATION

SCALE: 3/8" = 1'-0"



SOUTH ELEVATION

SCALE: 3/8" = 1'-0"



CONNECTION DETAIL

NTS

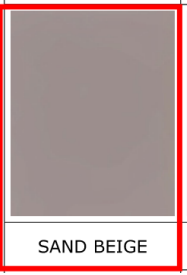
NOTES BY SYMBOL



1. FIRE EXTINGUISHER ON BRACKET MOUNTED AT 3'-6" ABOVE FINISH FLOOR TO HANDLE.
2. PRECAST BUILDING ROOF LINE ABOVE, EXTENDS 3" BEYOND WALLS.
3. PRECAST BUILDING WALLS, MANUFACTURERS' STANDARD WALL THICKNESS TO PROVIDE STRUCTURAL STRENGTH AND SPECIFIED THERMAL VALUE. SHOWN AND DIMENSIONED AS 9" FOR REFERENCE PROPOSES. INTERIOR DIMENSIONS SHALL REMAIN FIRM.
4. GYPSUM BOARD CEILING AT 8'-0" AFF.
5. 2X4 METAL STUDS WITH 1 LAYER 5/8" GYP. BD. ON EACH SIDE. EXTEND STUDS FROM SLAB TO 9'-0" AFF.



Split Face Block



SAND BEIGE

PLUMMER

14755 PRESTON ROAD, STE 420 | DALLAS, TX 75254
214.631.6100 | TBP# REGISTERED FIRM NUMBER F-13

NO.	DATE	REVISION	BY

THE CITY OF
COPPELL
TEXAS

THE CITY OF COPPELL, TEXAS
SANDY LAKE LIFT STATION AND SYSTEM IMPROVEMENTS
COPPELL SANDY LAKE LIFT STATION ADDITION
LOT 1, BLOCK A, 0.725 ACRES
1003 E SANDY LAKE ROAD, COPPELL, TX 75019
ELECTRICAL

BUILDING PLAN AND DETAILS

THESE DOCUMENTS ARE FOR INTERIM REVIEW AND ARE NOT INTENDED FOR CONSTRUCTION, BIDDING, OR PERMIT PURPOSES.
PATRICK N. MOSELEY
TEXAS P.E. NO. 72794
DATE: 3/8/2021

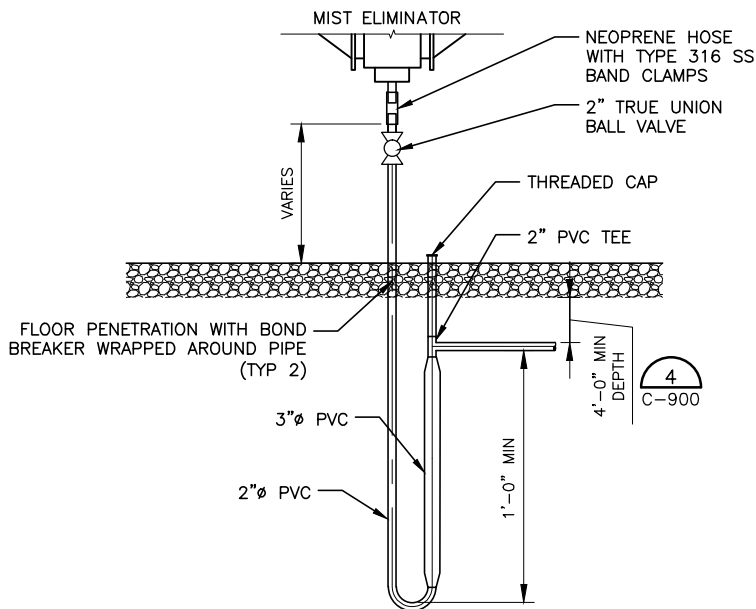
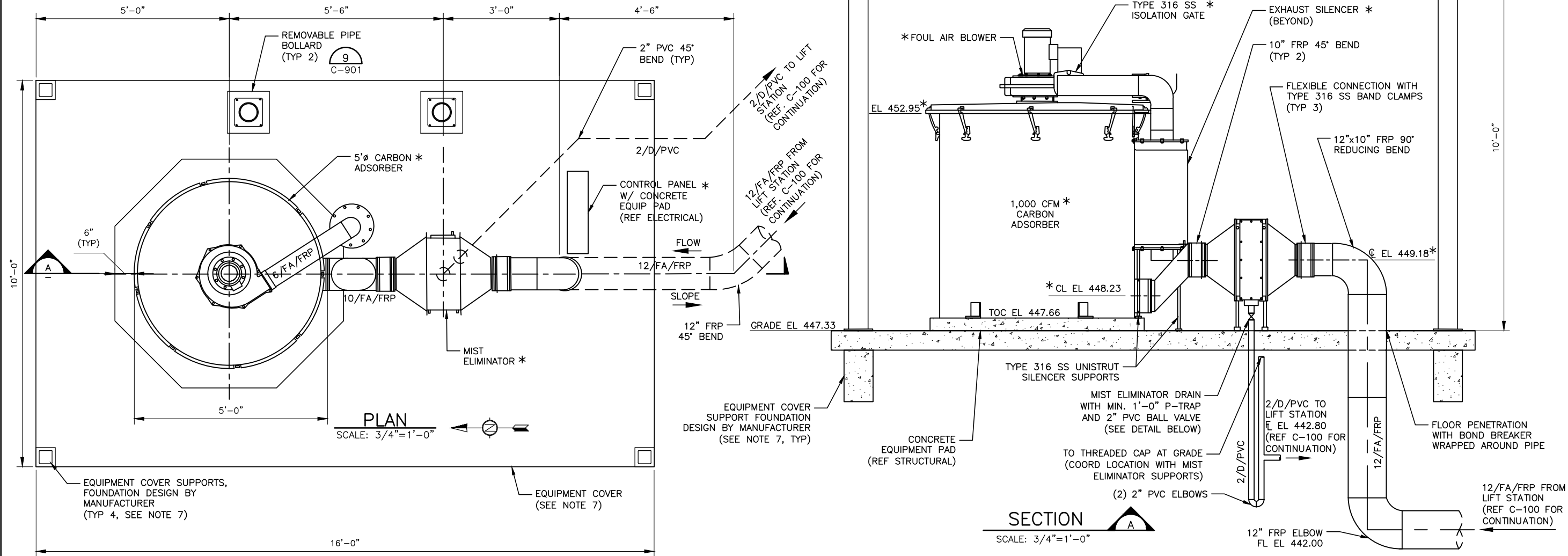
BAR IS ONE INCH ON ORIGINAL DRAWING.
ONE INCH

DESIGNED P. MOSELEY
DRAWN PLUMMER
CHECKED N. TOUSSAINT
REVIEWED P. MOSELEY

Seq. of
Dwg. No. **B-100**

PRINTED: 3/8/2021 8:48 AM C:\Projects\0816-008-01 Coppel Sandy Lake Lift Station\ACAD\Sheetfiles\ELECTRICAL\B-100.dwg
SAVED: 3/8/2021 8:47 AM USER: Moseley, Patrick

0816-008-01



DETAIL 1
MIST ELIMINATOR DRAIN P-TRAP
NTS

- NOTES:
- EQUIPMENT DENOTED BY "*" SHALL BE SUPPLIED BY A SINGLE MANUFACTURER PER SECTION 44 31 16. DIMENSIONS ALSO DENOTED BY "*" SHALL BE COORDINATED WITH EQUIPMENT SUPPLIER.
 - CONCRETE PAD AND PAVING SHALL BE SLOPED TO DRAIN WATER AWAY FROM EQUIPMENT.
 - CONTRACTOR SHALL COORDINATE DIMENSIONS AND CONNECTIONS WITH EQUIPMENT SUPPLIER. LOCATE SLAB PENETRATIONS TO AVOID CONFLICTS WITH EQUIPMENT AND SUPPORTS.
 - ALL ANCHORS AND HARDWARE SHALL BE TYPE 316 STAINLESS STEEL.
 - PROVIDE 1" OF NON-SHRINK GROUT BETWEEN ALL EQUIPMENT/SUPPORT ANCHORS AND THE CONCRETE SLAB.
 - CONCRETE ENCASE PIPE AND DUCT BELOW STRUCTURES AND ROADS.
 - CONTRACTOR SHALL FURNISH AND INSTALL 10'-0"Wx16'-0"Lx10'-0"H (MIN VERTICAL CLEARANCE) CARPORT-TYPE EQUIPMENT COVER WITH 24-GAUGE GALVANIZED STEEL ROOF AND ENDURACOTE PAINT SYSTEM, MANUFACTURED BY VICTORY AWNINGS, INC. (VAI), OR APPROVED EQUAL (COLOR LIGHT GRAY 899). SUPPORT TYPES AND LOCATIONS TO BE DETERMINED DURING CONSTRUCTION. REFER TO STRUCTURAL NOTES FOR MINIMUM DESIGN REQUIREMENTS. CONTRACTOR SHALL BE RESPONSIBLE FOR EQUIPMENT COVER AND FOUNDATION DESIGN SEALED BY TEXAS PROFESSIONAL ENGINEER.



Light Gray 889 IR=.31

PLUMMER

14755 PRESTON ROAD, STE 420 | DALLAS, TX 75254
214.631.6100 | TUBE REGISTERED FIRM NUMBER F-13

THE CITY OF COPPELL, TEXAS

NO. DATE REVISION BY

THE CITY OF COPPELL, TEXAS

1003 E SANDY LAKE ROAD, COPPELL, TX 75019

THE CITY OF COPPELL, TEXAS

SANDY LAKE LIFT STATION AND SYSTEM IMPROVEMENTS
COPPELL SANDY LAKE LIFT STATION ADDITION
LOT 1, BLOCK A, 0.725 ACRES
MECHANICAL

THE CITY OF COPPELL, TEXAS

CARBON ADSORBER PLAN AND SECTION

THESE DOCUMENTS ARE FOR INTERIM REVIEW AND ARE NOT INTENDED FOR CONSTRUCTION, BIDDING, OR PERMIT PURPOSES.

ADRIAN R. DONGELL
TEXAS P.E. NO. 102007
DATE: 3/8/2021

BAR IS ONE INCH ON ORIGINAL DRAWING.

ONE INCH

DESIGNED ARD

DRAWN EJC

CHECKED ART

REVIEWED BW

Seq. of

Dwg. No. M-105

0816-008-01

PRINTED: 3/8/2021 9:21 AM L:\Projects\0816\008-01\2-0 Wk Prod\2-1 ACAD\DWG\FILES\M-105.dwg

SAVED: 3/3/2021 11:04 AM USER: Cove, Forrest