

PORTION OF 15.0 ACRE TRACT, VOL. 817, PG. 335 NOT INCLUDED IN VOL. 501, PG. 57

OPEN SPACE
LOOK F. LOT 1X
(POSSIBLE POND)
D AND MAINTAINED
WESTHAVEN HOA)

FUTURE WESTHAVEN
PHASE 2

WINGATE RO

BLOCK F

BLOCK E

ROCK SPRINGS DRIVE

MATCHLINE-SEE SHEET 2

TWIN PINE CO

BLOCK D

BLOCK C

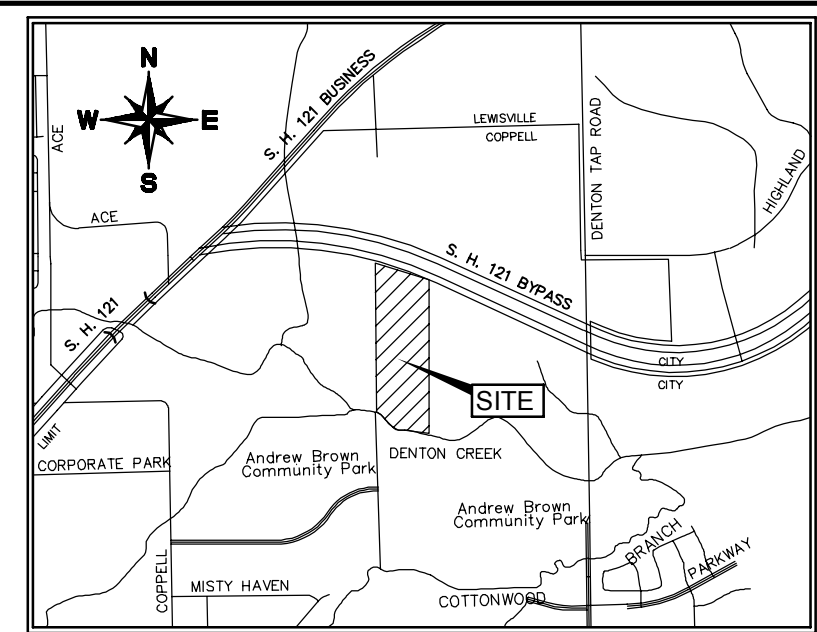
BLOCK B

BLOCK A

EXISTING MAGNOLIA
PARK SUBDIVISION

CANEMOUNT LANE

CALLED 26.741 ACRES



VICINITY MAP
NOT TO SCALE

LEGEND

- PROPERTY LINE
- MAGNOLIA PARK BUFFER ZONE (SEE NOTE)
- UNDISTURBED AREA
- PROTECTED TREE
- PROTECTED TREE WITHIN MAGNOLIA PARK
- UNPROTECTED TREE - HEALTHY
- UNPROTECTED TREE - DECEASED OR HAZARDOUS

NOTES:
DEVELOPER WILL MAKE EFFORTS TO PRESERVE ALL TREES WITHIN THE UNDISTURBED AREA. HOWEVER, TREES INDICATED WITH "X" WITHIN THE BUFFER/DRAINAGE WAY HAVE BEEN IDENTIFIED AS HAZARDOUS OR DECEASED AND ARE SUBJECT TO REMOVAL UPON FURTHER SAFETY ANALYSIS. THE DEVELOPER IS TO MAINTAIN A MINIMUM OF 1 TREE EVERY 40 FEET WITHIN THE BUFFER/DRAINAGE WAY. IF NECESSARY, THE DEVELOPER WILL PLANT ADDITIONAL 3" MINIMUM TREES TO MEET THE MINIMUM SPACING REQUIREMENT.

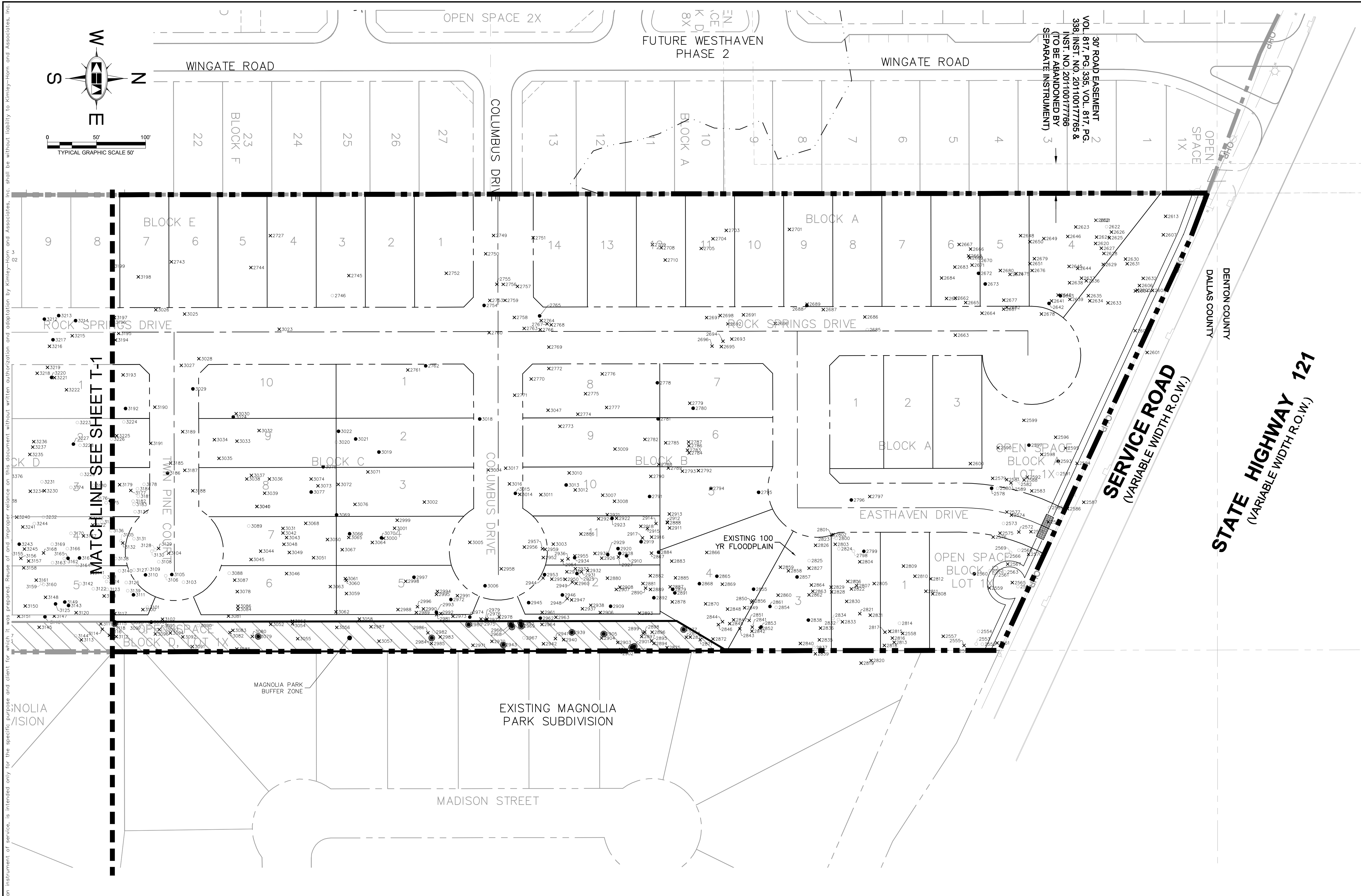
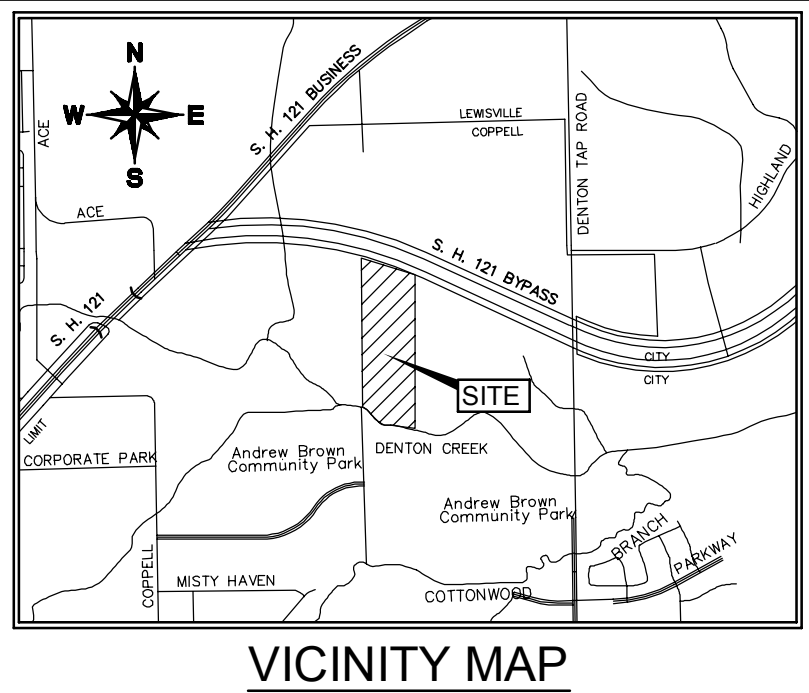
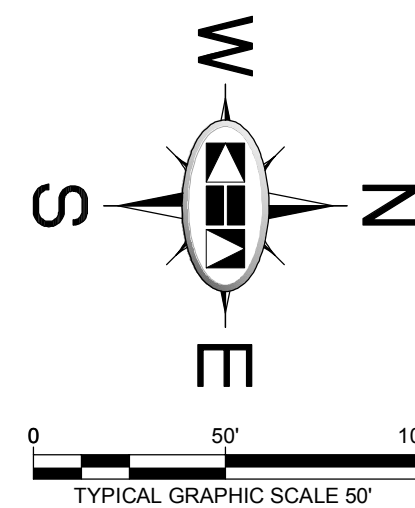
CALIPER INCHES OF TREES		
Health	Preserved	Removed
Healthy	1017.5 inches	2090.5 inches
Declining Health, Hazardous, Unprotected	2597.5 inches	8629.5 inches
Total	3615 inches	10720 inches

NUMBER OF TREES		
Health	Preserved	Removed
Healthy	113	201
Declining Health, Hazardous, Unprotected	267	784
Total	380	985

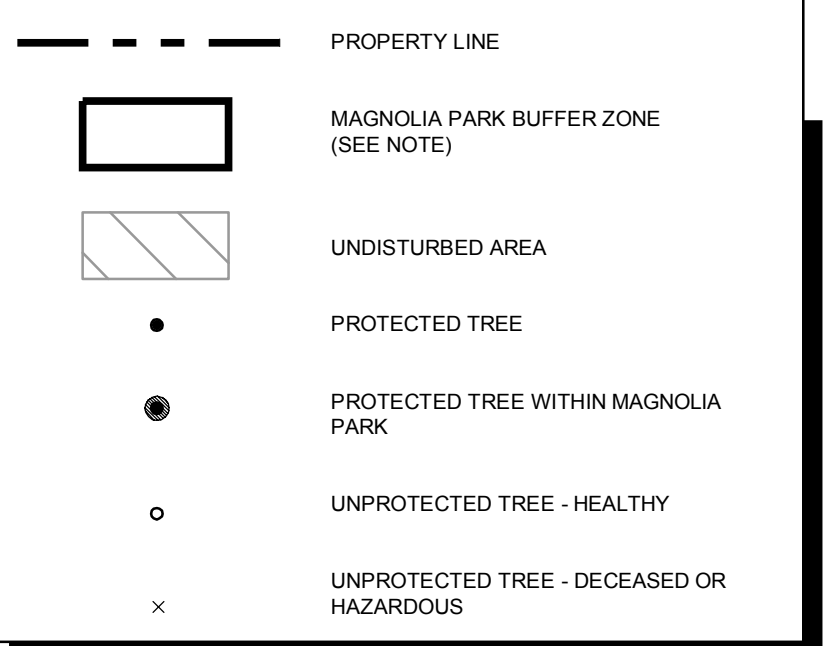
TREE SURVEY
FOR REVIEW ONLY
EASTHAVEN
EXISTING ZONING: RETAIL
PROPOSED ZONING: PD-264 RBN-S
58 RESIDENTIAL LOTS / 3 OPEN SPACES
BEING 20.05 ACRES
2.63 DU/AC (GROSS) AND 4.19 DU/AC (NET)
OUT OF THE
CLARINDA SQUIRES SURVEY, ABSTRACT NO. 1327
CITY OF COPPELL, DALLAS COUNTY, TEXAS

OWNERS: James E. Cummings PO BOX 6173 San Antonio, TX 78209	DEVELOPER: Amalgamated Development John Hutchinson 5055 Keller Springs Road Suite 170 Addicks, TX 75001	ENGINEER/SURVEYOR: Kimley-Horn and Associates 5750 Genesis Ct. Suite 200 Frisco, TX 75034 Tel: (972) 335-9880 Contact: Mark Harris, P.E.
--	--	--

DESIGNED	DRAWN	CHECKED	SCALE	DATE	KHA PROJECT NO.	T-1
ANW	ANW	MEH	AS SHOWN	MAY 2013	68308201	



LEGEND



NOTES:
 DEVELOPER WILL MAKE EFFORTS TO PRESERVE ALL TREES WITHIN THE UNDISTURBED AREA. HOWEVER, TREES INDICATED WITH "X" WITHIN THE BUFFER/DRAINAGE WAY HAVE BEEN IDENTIFIED AS HAZARDOUS OR DECEASED AND ARE SUBJECT TO REMOVAL UPON FURTHER SAFETY ANALYSIS. THE DEVELOPER IS TO MAINTAIN A MINIMUM OF 1 TREE EVERY 40 FEET WITHIN THE BUFFER/DRAINAGE WAY. IF NECESSARY, THE DEVELOPER WILL PLANT ADDITIONAL 3" MINIMUM TREES TO MEET THE MINIMUM SPACING REQUIREMENT.

CALIPER INCHES OF TREES		
Health	Preserved	Removed
Healthy	1017.5 inches	2090.5 inches
Declining Health, Hazardous, Unprotected	2597.5 inches	8629.5 inches
Total	3615 inches	10720 inches

NUMBER OF TREES		
Health	Preserved	Removed
Healthy	113	201
Declining Health, Hazardous, Unprotected	267	784
Total	380	985

TREE SURVEY
 FOR REVIEW ONLY
EASTHAVEN
 EXISTING ZONING: RETAIL
 PROPOSED ZONING: PD-264 RBN-5
 58 RESIDENTIAL LOTS / 3 OPEN SPACES
 BEING 20.05 ACRES
 2.63 DU/AC (GROSS) AND 4.19 DU/AC (NET)
 OUT OF THE
CLARINDA SQUIRES SURVEY, ABSTRACT NO. 1327
 CITY OF COPPELL, DALLAS COUNTY, TEXAS

OWNERS: James E. Cummings PO BOX 6173 San Antonio, TX 78209	DEVELOPER: Amalgamated Development John Hutchinson 5055 Keller Springs Road Suite 170 Addicks, TX 75001	ENGINEER/SURVEYOR: Kimley-Horn and Associates 5750 Genesis Ct, Suite 200 Frisco, TX 75034 Tel: (972) 335-9580 Contact: Mark Harris, P.E.
--	--	--

DESIGNED	DRAWN	CHECKED	SCALE	DATE	KHA PROJECT NO.	T-2
ANW	ANW	MEH	AS SHOWN	MAY 2013	63028201	

PLOTTED BY: \\S:\BLANK\ASSETS\1327\0313\1327.dwg DATE: 5/13/2013 10:54:14 AM
 DRAWN BY: \\S:\BLANK\ASSETS\1327\0313\1327.dwg DATE: 5/13/2013 10:54:14 AM
 LAST SAVED: 5/13/2013 10:54:14 AM
 This document, together with the concepts and designs presented herein, is intended only for the specific purpose and client for which it was prepared. Reuse of this document without written authorization and adaptation by Kimley-Horn and Associates, Inc. shall be without liability to Kimley-Horn and Associates, Inc.

Easthaven Tree Survey
5/8/2013

Tree Tag #	Common Name	Total DBH	Mitigation Inches	Condition Notes/Pic #	Protected
2551	Hackberry	9.5	0	Dual Leader, Pic 02	No
2552	Hackberry	7	0	Not Protected	No
2553	Hackberry	8.75	0	Not Protected	No
2554	Bois d'Arc	8.75	0	Not Protected	No
2555	American Elm	16.5	0	Unilateral, Wire Girdled, Pic 05	No
2556	Hackberry	10	10		Yes
2557	Bois d'Arc	10.25	0	Dual Leader, Included Bark, Pic 06	No
2558	Bois d'Arc	11	0	Multi Leader, Included Bark, Pic 07	No
2559	Green Ash	9	0	Dual Leader, Pic 08	No
2560	Cedar Elm	6.5	6.5		Yes
2561	Bois d'Arc	7.25	0	Not Protected	No
2562	Hackberry	7	0	Not Protected	No
2563	Bois d'Arc	7	0	Not Protected	No
2564	Bois d'Arc	8.25	0	Not Protected	No
2565	Bois d'Arc	12.5	0	Multi Leader, Pic 09	No
2566	Bois d'Arc	8.25	0	Not Protected	No
2567	Cedar Elm	7	0	Unilateral, Pic 10	No
2568	Bois d'Arc	8.5	0	Not Protected	No
2569	Bois d'Arc	7	0	Not Protected	No
2570	American Elm	10.5	0	Borers, Decay, Pic 11	No
2571	Bois d'Arc	14.25	0	Multi Leader, Female, Pic 12	No
2572	American Elm	6.75	0	Unilateral, Pic 13	No
2573	Bois d'Arc	6.5	0	Not Protected	No
2574	Cedar Elm	6.75	0	Unilateral	No
2575	Bois d'Arc	14.75	0	Dual Leader, Included Bark, Pic 14	No
2576	Hackberry	7.25	0	Borers	No
2577	Bois d'Arc	14	0	Multi Leader, Included Bark, Pic 15	No
2578	Green Ash	7.25	7.25		Yes
2579	Cedar Elm	8.5	0	Secondary Missing, Pic 16	No
2580	Bois d'Arc	9.25	0	Not Protected	No
2581	Green Ash	6.5	0	Dual Leader, Pic 17	No
2582	Bois d'Arc	9.5	0	Not Protected	No
2583	American Elm	6.5	0	Unilateral, Subordinate, Pic 18	No
2584	American Elm	8.25	0	Unilateral, Subordinate, Dual Leader, Included, Pic 19	No
2585	Bois d'Arc	9.25	0	Female, Not Protected	No
2586	Siberian Elm	18.5	0	Under Lines, Severe Decay, Pic 20	No
2587	American Elm	9.25	0	Dual Leader, Included Bark, Pic 21	No
2588	American Elm	8	0	Unilateral	No

1 of 72

Easthaven Tree Survey
5/8/2013

Tree Tag #	Common Name	Total DBH	Mitigation Inches	Condition Notes/Pic #	Protected
2589	Green Ash	8.75	0	Multi Leader, Included Bark, Pic 22	No
2590	American Elm	6.25	0	Dead	No
2591	Hackberry	9.25	0	Not Protected	No
2592	Cedar Elm	7.5	0	Dual Leader, Twisted Trunk, Included, Pic 23	No
2593	Cedar Elm	6.5	6.5		Yes
2594	Siberian Elm	10.75	0	Unilateral, Under Lines, Decay, Pic 24	No
2595	Siberian Elm	6.25	0	Borers, Unilateral, Pic 25	No
2596	American Elm	6.5	0	Unilateral, Subordinate	No
2597	American Elm	8.5	8.5		Yes
2598	American Elm	6.5	0	Dual Leader, Included Bark, Pic 26	No
2599	American Elm	10	0	Multi Leader, Included Bark, Pic 27	No
2600	American Elm	8.25	0	Dual Leader, Borers, Pic 28	No
2601	Siberian Elm	12.25	0	Dual Leader, Decay, Girdled, Pic 29	No
2602	Green Ash	8.75	0	Root Zone Half Missing, Pic 30	No
2603	American Elm	11.5	0	Dual Leader, Included Bark, Nectria Canker, Pic 31	No
2604	Slippery Elm	9	0	Unilateral	No
2605	American Elm	6.5	0	Unilateral, Canker, Pic 32	No
2606	Hercules Club	8	0	Unilateral, Basal Decay, Borers	No
2607	Green Ash	12.5	0	Multi Leader, Decay, Pic 33	No
2613	Gulf Black Willow	16.25	0	Unilateral, Subordinate	No
2620	American Elm	8.75	0	Exposed Roots, Creek Bank	No
2621	Hackberry	6.25	0	Not Protected	No
2622	Hackberry	7	0	Not Protected	No
2623	Pecan	9.5	0	Missing Central Leader, Pic 36	No
2624	American Elm	6.5	0	Horizontal, Pic 37	No
2625	American Elm	9.25	0	Creek Bank, Pic 38	No
2626	Green Ash	6.5	0	Creek Bank, Girdled By Smaller Tree, Pic 39	No
2627	American Elm	6.75	0	Creek Bank, Pic 40	No
2628	American Elm	6.5	0	Missing Whole Top	No
2629	Green Ash	8.25	0	Dual Leader, Creek Bank, Pic 41	No
2630	American Elm	11.5	0	Terminal Dieback, Pic 42	No
2631	American Elm	6.5	0	Erosion, Unilateral	No
2632	American Elm	7	0	Unilateral	No
2633	Green Ash	8.5	0	Basal Flair Occlusion, Creek Bank, Pic 43	No
2634	Green Ash	10.5	0	Creek Bank, Erosion, Pic 44	No
2635	Cedar Elm	9	0	Unilateral	No
2636	Cedar Elm	6.25	0	Unilateral, Subordinated	No
2637	American Elm	10.5	0	Unilateral	No

2 of 72

Easthaven Tree Survey
5/8/2013

Tree Tag #	Common Name	Total DBH	Mitigation Inches	Condition Notes/Pic #	Protected
2638	Green Ash	8	0	Unilateral	No
2639	American Elm	14.5	0	Unilateral, Subordinate, Creek Bank, Pic 45	No
2640	Green Ash	7.75	0	Unilateral, Subordinate, Creek Bank	No
2641	Cedar Elm	6	0	Unilateral, Subordinate, Creek Bank	No
2642	Pecan	9.25	9.25		Yes
2643	Green Ash	6.5	6.5		Yes
2644	Mulberry	7	0	Unilateral, Subordinate	No
2645	Green Ash	14.75	0	Vines, Cavity, Terminal Dieback, Pic 46	No
2646	Cedar	7.5	0	Subordinate	No
2648	American Elm	23	0	Dead, Pic 47	No
2649	American Elm	24.75	0	Unilateral, Decay, Hazardous, Pic 48	No
2650	Green Ash	13	0	Unilateral, Subordinate	No
2651	Green Ash	25.75	0	Dual Leader, Included Bark, Decay Column, Pic 49	No
2652	Cedar	7.25	0	Basal Flair Occlusion, Pic 50	No
2661	Cedar Elm	6.5	0	Unilateral, Subordinate	No
2662	Cedar Elm	6.5	0	Unilateral, Subordinate	No
2663	Green Ash	8.5	0	Dead, Pic 53	No
2664	Cedar Elm	13.5	0	Decay, Creek Bank Erosion, Pic 55	No
2665	American Elm	11.5	0	Decline, Dieback, Hazardous, Pic 54	No
2666	Bois d'Arc	14.25	0	Dual Leader, Decline, Pic 56	No
2667	Bois d'Arc	13.5	0	Decay, Terminal Dieback, Pic 57	No
2668	Bois d'Arc	11.75	0	Subordinate, Unilateral	No
2669	Cedar	9.75	0	Dual Leader, Pic 58	No
2670	Hackberry	8.25	0	Not Protected	No
2671	Cedar	7.25	0	Dead	No
2672	Cedar Elm	6.25	6.25		Yes
2673	American Elm	7.5	7.5		Yes
2674	Cedar	10.5	0	Subordinate	No
2675	American Elm	16	0	Unilateral	No
2676	American Elm	13.5	0	Unilateral, Subordinate	No
2677	Green Ash	8	0	Unilateral, Subordinate, Erosion, Pic 60	No
2678	American Elm	13.25	0	Dual Leader, Included Bark, Erosion, Pic 61	No
2679	Cedar	7.5	0	Subordinate	No
2680	American Elm	13	0	Unilateral, Erosion, Pic 62	No
2681	American Elm	6.75	0	Unilateral, Subordinate, Erosion, Pic 62	No
2682	American Elm	10.5	0	Unilateral, Subordinate, Erosion, Pic 62	No
2683	American Elm	6.5	0	Unilateral, Subordinate	No
2684	Green Ash	6.75	0	Unilateral, Subordinate	No

3 of 72

Easthaven Tree Survey
5/8/2013

Tree Tag #	Common Name	Total DBH	Mitigation Inches	Condition Notes/Pic #	Protected
2685	Hackberry	8	0	Not Protected	No
2686	Cedar Elm	17.5	0	Unilateral, Borers, Decay, Pic 63	No
2687	Cedar Elm	18.5	0	Basal Decay, Pic 64	No
2688	Cedar Elm	10	10		Yes
2689	Cedar Elm	6	0	Unilateral, Subordinate	No
2690	Bois d'Arc	16	0	Multi Leader, Decay, Pic 65	No
2691	Cedar Elm	7.75	0	Dual Leader, Pic 66	No
2692	Cedar Elm	19.75	0	Dual Leader, Severe Decay, Wire Girdled, Pic 67	No
2693	Cedar Elm	8.5	0	Sub, Unilateral, Pic 68	No
2694	Cedar Elm	10.75	0	Subordinate, Unilateral, Pic 68	No
2695	Cedar Elm	11.25	0	Dual Leader,	No
2696	Cedar Elm	6.25	0	Subordinate, Unilateral	No
2697	Cedar Elm	10.5	0	Dual Leader, Compression With 2698, Pic 69	No
2698	Cedar Elm	13.5	0	Dual Leader	No
2701	Bois d'Arc	20	0	Dual Leader, Included Bark, Pic 71	No
2703	American Elm	15.5	0	Decline Terminal Dieback	No
2704	Cedar Elm	22	0	Dual Leader Included Bark, Pic 72	No
2705	Cedar Elm	8.75	0	Unilateral, Subordinate	No
2708	Cedar Elm	22	0	Decay Column, Occluded Basal Flare, Pic 74	No
2709	Cedar Elm	25.25	0	Decay Column, Included Bark, Pic 75	No
2710	Bois d'Arc	17	0	Multi Trunk, Split, Pic 76	No
2727	China Berry	9.25	0	Unilateral, Dual Leader	No
2743	Burr Oak	39.25	0	Basal Flair Occlusion, Pic 105	No
2744	Green Ash	10.75	0	Dual Leader, Included Bark, Pic 107	No
2745	Bois d'Arc	12.5	0	Multi Trunk, Included Bark	No
2746	Bois d'Arc	9	0	Not Protected	No
2749	Cedar Elm	11.25	0	Unilateral	No
2750	American Elm	20.25	0	Unilateral	No
2751	Bois d'Arc	20.5	0	Dual Leader, Decline, Pic 77	No
2752	Cedar Elm	21.75	0	Multi Trunk, Included Bark, Unilateral	No
2753	Cedar Elm	6.75	0	Unilateral, Subordinate	No
2754	Cedar Elm	10.75	10.75		Yes
2755	Cedar Elm	11.75	0	Unilateral	No
2756	Cedar Elm	8.5	0	Unilateral, Subordinate	No
2757	Cedar Elm	14.5	0	Unilateral, Subordinate	No
2758	Chittum	6.5	0	Subordinate	No
2759	Cedar Elm	21.5	0	Dual Leader, Included Bark, Pic 79	No
2760	Cedar Elm	9.5	0	Unilateral	No

4 of 72

Easthaven Tree Survey
5/8/2013

Tree Tag #	Common Name	Total DBH	Mitigation Inches	Condition Notes/Pic #	Protected
2761	Burr Oak	8.25	0	Dual Leader Included Bark, Pic 79	No
2762	Burr Oak	7	7		Yes
2763	Cedar Elm	13.75	0	Unilateral	No
2764	Cedar Elm	18.25	0	Unilateral, Dual Leader	No
2765	Cedar Elm	13	13		Yes
2766	Cedar Elm	15	0	Unilateral, Dual Leader, Included Bark, Pic 81	No
2767	Cedar Elm	6.5	0	Subordinate, Severe Decay, Pic 82	No
2768	Cedar Elm	20.5	0	Unilateral	No
2769	Cedar Elm	14.5	0	Unilateral	No
2770	Cedar Elm	12.25	0	Unilateral, Subordinate, Basal Flare Occlusion, Pic 92	No
2771	Cedar Elm	16	0	Unilateral, Basal Flare Occlusion, Pic 93	No
2772	Cedar Elm	20	0	Flare Occlusion, Central Leader Missing, Decline, Pic 89	No
2773	Cedar Elm	11	0	Subordinate, Unilateral	No
2774	Cedar Elm	15.75	0	Subordinate, Unilateral	No
2775	Cedar Elm	18.25	0	No Flare, Terminal Dieback, Decay, Pic 88	No
2776	China Berry	9	0	Unilateral	No
2777	Burr Oak	24.5	0	Hypoxylon, Terminal Dieback, Decline, Pic 87	No
2778	Cedar Elm	8.5	8.5		Yes
2779	Cedar Elm	12	0	Unilateral, Subordinate, Dual Leader No Root Flare, Decay, Pic 83	No
2780	Cedar Elm	15	15		Yes
2781	Cedar Elm	9.5	9.5		Yes
2782	Cedar Elm	15.75	0	Included Bark Pic 84	No
2783	Cedar Elm	12.25	0	Unilateral, Subordinate, No Flare	No
2784	Cedar Elm	14.75	0	Subordinate, Unilateral, Included Bark	No
2785	Cedar Elm	8	0	Unilateral, Subordinate	No
2786	Cedar Elm	8.25	0	Unilateral, Subordinate	No
2787	Cedar Elm	10	0	Unilateral, Subordinate	No
2788	Cedar Elm	13.75	0	Unilateral	No
2789	Chittum	7	0	Borers, Decay, Missing Leader, Pic 85	No
2790	Bois d'Arc	13.75	0	Subordinate, Unilateral	No
2791	Cedar Elm	13.5	13.5		Yes
2792	Cedar Elm	11.5	0	Unilateral	No
2793	Green Ash	21	0	Unilateral	No
2794	Pecan	6.5	6.5		Yes
2795	Burr Oak	10.25	10.25		Yes
2796	Green Ash	7	7		Yes
2797	Green Ash	9.25	0	Dual Leader, Included Bark, Pic 130	No
2798	Hackberry	9.5	0	Not Protected	No

5 of 72

Easthaven Tree Survey
5/8/2013

Tree Tag #	Common Name	Total DBH	Mitigation Inches	Condition Notes/Pic #	Protected
2799	Green Ash	7.25	7.25		Yes
2800	Hackberry	7	0	Not Protected	No
2801	Cedar Elm	7.75	0	Grade Raised, Pic 131	No
2802	Cedar Elm	6.75	0	Unilateral, Subordinate	No
2803	Cedar Elm	9	0	Unilateral, Dual Leader, Included Bark, Pic 132	No
2804	Cedar Elm	6.75	0	Unilateral, Slope, Dual Leader	No
2805	Cedar Elm	16.25	0	Slope, Basal Occlusion, Pic 120	No
2806	Cedar Elm	8.5	0	Slope, Raised Grade, Pic 121	No
2807	Cedar Elm	6.25	0	Unilateral, Slope	No
2808	Cedar Elm	6.75	0	Subordinate, Unilateral, Slope, Pic 119	No
2809	American Elm	8.75	0	Trunk Decay, Pic 125	No
2810	American Elm	7.25	0	Unilateral, Subordinate, Basal Flare Damage, Pic123	No
2811	American Elm	16.5	0	Multi Trunk, Severe Basal Damage, Pic122	No
2812	Siberian Elm	8.75	0	Unilateral, Subordinate	No
2813	Cedar	7	0	Unilateral, Basal Decay, Pic 110	No
2814	Hackberry	9.75	0	Not Protected	No
2815	Pecan	12.25	0	Grade Changes, Basal Occlusion, Pic 111	No
2816	Slippery Elm	7.5	0	Unilateral, Subordinate, Grade Raised	No
2817	Cedar Elm	9.75	0	Dual Leader, Erosion, Pic 112	No
2818	Cedar Elm	8	0	Basal Flare Occlusion, Slope, Pic113	No
2819	Cedar Elm	7.75	0	Basal Occlusion, Pic 113	No
2820	Cedar Elm	7.5	0	Grade Raised, Pic 114	No
2821	American Elm	9.75	0	Severe Decay, Basal Occlusion, Pic115	No
2822	Mesquite	10.75	0	Bracket Fungi, Pic 137	No
2823	Hackberry	8.25	0	Not Protected	No
2824	Hackberry	7.5	0	Not Protected	No
2825	Hackberry	7	0	Not Protected	No
2826	Cedar Elm	9.25	0	Slope, Soil Slump, Pic 133	No
2827	Cedar Elm	6.25	0	Slope, Grade Raised, Pic 134	No
2828	Cedar Elm	6.25	0	Slope, Soil Slump, Pic 135	No
2829	Cedar Elm	13.5	0	Multi Trunk, Soil Slump, Pic 136	No
2830	Green Ash	10.75	0	Unilateral, Subordinate, Basal Decay, Pic 117	No
2831	Cedar Elm	7.5	0	Unilateral, Basal Occlusion, Erosion, Pic 116	No
2832	Hackberry	8.5	0	Not Protected	No
2833	Cedar Elm	7.5	0	Unilateral, Subordinate, Vines,	No
2834	Hackberry	6.5	0	Not Protected	No
2835	Slippery Elm	12.25	0	Unilateral, Dual Leader, Included Bark, Pic 118	No
2836	Cedar Elm	9	0	Subordinate, Unilateral, Basal Occlusion	No

6 of 72

Easthaven Tree Survey
5/8/2013

Tree Tag #	Common Name	Total DBH	Mitigation Inches	Condition Notes/Pic #	Protected
2837	Hackberry	6.25	0	Not Protected	No
2838	Green Ash	6.25	6.25		Yes
2839	American Elm	15	0	Unilateral, Subordinate	No
2840	Cedar Elm	7.25	0	Unilateral, Subordinate	No
2841	Green Ash	7	0	Unilateral,	No
2842	Cedar Elm	8	0	Unilateral, Subordinate, Grade	No
2843	Green Ash	10	0	Subordinate, Unilateral,	No
2844	Cedar Elm	9.75	0	Subordinate, Unilateral	No
2845	Honey Locust	7	0	Subordinate, Unilateral	No
2846	American Elm	12.75	0	Dual Leader, Included Bark, Pic 148	No
2847	Cottonwood	23.75	0	Grade Change, Pic 146	No
2848	Cedar	8	0	Subordinate, Soil Slump, Pic 144	No
2849	Cedar	10.75	0	Grade Change, Trunk Decay, Pic 147	No
2850	Cedar Elm	6	0	Subordinate	No
2851	Cedar Elm	7.25	0	Subordinate	No
2852	Cedar Elm	7	0	Vines, Grade Change, Pic 145	No
2853	Cedar Elm	10.25	10.25		Yes
2854	Mesquite	6.75	0	Not Protected	No
2855	Cedar Elm	6.25	6.25		Yes
2856	Cedar Elm	7.75	0	Unilateral, Grade Raised, Pic 143	No
2857	Cedar Elm	7.25	7.25		Yes
2858	Cedar Elm	10	0	Dual Leader, Included Bark, Pic 141	No
2859	Cedar Elm	6.75	0	Unilateral, Grade Raised, Pic 140	No
2860	Cedar Elm	6.25	0	Subordinate, Unilateral	No
2861	Cedar Elm	9	9		Yes
2862	Cedar Elm	6.5	0	Soil Slump, Pic 138	No
2863	Cedar Elm	6.25	0	Soil Slump, Pic 139	No
2864	Cedar Elm	6.75	0	Unilateral, Soil Slump, Pic 139	No
2865	Green Ash	6	6		Yes
2866	Green Ash	7	0	Unilateral	No
2867	American Elm	10.25	0	Dual Leader, Included Bark, Decay Column, Pic 152	No
2868	Green Ash	6.5	6.5		Yes
2869	American Elm	10	10		No
2870	Green Ash	7.25	0	Grade Raised, Erosion, Pic 153	No
2871	Green Ash	8.5	0	Basal Decay, Pic 155	No
2872	Green Ash	7.75	0	Dual Leader, Included Bark	No
2873	Green Ash	6.5	0	Dual Leader, Included Bark, Unilateral,	No
2874	Green Ash	6.5	0	Grade Raised, Unilateral, Subordinate, Pic 156	No
				Unilateral, Subordinate, Grade Raised, Pic 157	No

7 of 72

Easthaven Tree Survey
5/8/2013

Tree Tag #	Common Name	Total DBH	Mitigation Inches	Condition Notes/Pic #	Protected
2875	Green Ash	6.75	0	Unilateral, Grade Raised, Pic 158	No
2876	Green Ash	7	7		Yes
2877	Green Ash	6.25	6.25		Yes
2878	Green Ash	6.5	0	Basal Compression From Smaller Tree, Pic 154	No
2879	Green Ash	7.25	7.25		Yes
2880	Green Ash	9.25	0	Subordinate, Unilateral	No
2881	Green Ash	10.25	0	Subordinate, Unilateral	No
2882	Cedar Elm	9.5	0	Subordinate, Unilateral	No
2883	Cedar Elm	11	0	Unilateral	No
2884	Cedar Elm	8.5	8.5		Yes
2885	Cedar Elm	7.5	0	Dual Leader, Included Bark, Pic 164	No
2886	Cedar Elm	6.5	0	Unilateral, Subordinate	No
2887	Green Ash	6.25	0	Unilateral, Subordinate, Horizontal, Pic 159	No
2888	Burr Oak	16.25	0	Dead, Fallen, Pic 165	No
2889	Cedar Elm	10.75	0	Unilateral, Subordinate	No
2890	Cedar Elm	10	0	Unilateral, Subordinate	No
2891	Cedar Elm	14	14		Yes
2892	Cedar Elm	9.5	9.5		Yes
2893	Cedar Elm	6	0	Subordinate, Wire Girdled, Pic 166	No
2894	Green Ash	10.25	0	Subordinate, Unilateral	No
2895	Cedar Elm	6.25	0	Unilateral, Subordinate	No
2896	Cedar Elm	7	0	Unilateral, Subordinate	No
2897	Cedar Elm	9.5	0	Unilateral, Subordinate	No
2898	Cedar Elm	8.75	0	Unilateral	No
2899	Cedar Elm	9.5	0	Unilateral	No
2900	Cedar Elm	13.25	13.25		Yes
2901	Cedar Elm	12	12		Yes
2902	Cedar Elm	12.25	0	Grade Raised, Pic 167	No
2903	Green Ash	7	0	Unilateral, Subordinate, Raised Grade, Pic 168	No
2904	Cedar Elm	13.25	0	Grade Raised, 169	No
2905	Cedar Elm	12	12		Yes
2906	Cedar Elm	22.5	0	Dual Leader, Included Bark, Pic 170	No
2907	Cedar Elm	11	0	Unilateral	No
2908	Cedar Elm	7.5	0	Unilateral, Subordinate	No
2909	Cedar Elm	12.5	12.5		Yes
2910	Green Ash	6.25	6.25		Yes
2911	Green Ash	8.5	0	Unilateral, Dual Leader, Included Bark, Pic 160	No
2912	Cedar Elm	10	0	Unilateral, Grade Raised, Pic 161	No

8 of 72

Easthaven Tree Survey
5/8/2013

Tree Tag #	Common Name	Total DBH	Mitigation Inches	Condition Notes/Pic #	Protected
2913	Cedar Elm	7.5	0	Subordinate, Unilateral	No
2914	Cedar Elm	14	0	Unilateral	No
2915	Cedar Elm	7	0	Subordinate, Unilateral, Dual Leader, Included Bark	No
2916	Cedar Elm	7	0	Subordinate, Decay, Pic 162	No
2917	Cedar Elm	9.25	0	Unilateral,	No
2918	Cedar Elm	10.25	0	Subordinate, Unilateral, Decay Column, Pic 163	No
2919	Cedar Elm	15.25	15.25		Yes
2920	Burr Oak	20.5	20.5		Yes
2921	Cedar Elm	9.5	0	Subordinate	No
2922	Cedar Elm	6.25	0	Subordinate	No
2923	Cedar Elm	16	16		Yes
2924	Cedar Elm	13	0	Unilateral	No
2925	Cedar Elm	8.5	8.5		Yes
2926	Cedar Elm	6.25	0	Subordinate	No
2927	Cedar Elm	8.5	0	Subordinate	No
2928	Cedar Elm	11	11		Yes
2929	Cedar Elm	16	16		Yes
2930	Cedar Elm	11.75	0	Unilateral, Subordinate	No
2931	Cedar Elm	12.75	0	Unilateral, Subordinate	No
2932	Cedar Elm	10.25	0	Unilateral, Subordinate, Grade Raised, Pic 171	No
2933	Cedar Elm	10	0	Subordinate, Unilateral	No
2934	Cedar Elm	13.25	13.25		Yes
2935	Cedar Elm	11	0	Subordinate	No
2936	Cedar Elm	7	0	Subordinate	No
2937	Cedar Elm	13.25	0	Unilateral, Subordinate	No
2938	Cedar Elm	8.25	0	Unilateral, Subordinate	No
2939	Cedar Elm	12.25	12.25		Yes
2940	Green Ash	8.5	0	Unilateral	No
2941	Green Ash	7.75	0	Unilateral	No
2942	Green Ash	8.25	0	Unilateral	No
2943	Cedar Elm	11.5	11.5		Yes
2944	Cedar Elm	17	0	Unilateral, Dual Leader, Included Bark, Pic175	No
2945	Cedar Elm	15	15		Yes
2946	Cedar Elm	14.5	14.5		Yes
2947	Cedar Elm	9.25	0	Unilateral, Subordinate	No
2948	Cedar Elm	14	0	Subordinate, Unilateral	No
2949	Cedar Elm	7.25	0	Unilateral, Subordinate	No
2950	Cedar Elm	6	0	Subordinate	No

9 of 72

Easthaven Tree Survey
5/8/2013

Tree Tag #	Common Name	Total DBH	Mitigation Inches	Condition Notes/Pic #	Protected
2951	Cedar Elm	6.25	0	Subordinate	No
2952	Cedar Elm	6.25	0	Subordinate	No
2953	Cedar Elm	7.25	7.25		Yes
2954	Cedar Elm	8.75	0	Unilateral, Subordinate	No
2955	Cedar Elm	19.5	0	Dual Leader, Included Bark, Pic 172	No
2956	Cedar Elm	9	0	Unilateral, Subordinate	No
2957	Cedar Elm	6	0	Unilateral, Subordinate	No
2958	Cedar Elm	10.25	0	Dual Leader, Included Bark, Pic 174	No
2959	Cedar Elm	16	0	Severe Storm Damage, Pic 173	No
2960	Cedar Elm	8	0	Unilateral, Subordinate	No
2961	Cedar Elm	9.5	0	Unilateral, Subordinate	No
2962	Cedar Elm	13.5	13.5		Yes
2963	Cedar Elm	8.25	0	Unilateral, Subordinate	No
2964	Cedar Elm	11	0	Unilateral, Subordinate	No
2965	Cedar Elm	15.5	15.5		Yes
2966	Cedar Elm	13	13		Yes
2967	Bois d'Arc	9.5	0	Not Protected	No
2968	Cedar Elm	9.5	9.5		Yes
2969	Cedar Elm	11	11		Yes
2970	Cedar Elm	10.75	0	Grade Raised, Pic 176	No
2971	Cedar Elm	13.25	0	Grade Raised, Pic 177	No
2972	Cedar Elm	11.75	11.75		Yes
2973	Cedar Elm	9	0	Unilateral, Subordinate	No
2974	Cedar Elm	12	12		Yes
2975	Cedar Elm	15	0	Dual Leader, Included Bark, Pic 178	No
2976	Cedar Elm	6.75	0	Unilateral, Subordinate	No
2977	Cedar Elm	11	0	Unilateral, Subordinate	No
2978	Cedar Elm	6.25	0	Subordinate	No
2979	Cedar Elm	6.5	0	Subordinate	No
2980	Cedar Elm	13.5	13.5		Yes
2981	Cedar Elm	9.25	0	Unilateral, Subordinate	No
2982	Hackberry	7.5	0	Not Protected	No
2983	Cedar Elm	12.75	0	Storm Damage, Decay, Pic 181	No
2984	Cedar Elm	13.5	13.5		Yes
2985	Cedar Elm	9.25	0	Subordinate	No
2986	Cedar Elm	16.5	0	Unilateral,	No
2987	Cedar Elm	9.5	0	Unilateral, Subordinate	No
2988	Cedar Elm	9.25	0	Unilateral, Subordinate	No

10 of 72

Easthaven Tree Survey
5/8/2013

Tree Tag #	Common Name	Total DBH	Mitigation Inches	Condition Notes/Pic #	Protected
2989	Cedar Elm	7.5	0	Unilateral, Subordinate	No
2990	Cedar Elm	7.5	0	Unilateral, Subordinate	No
2991	Cedar Elm	7.5	0	Unilateral,	No
2992	Cedar Elm	6.25	0	Unilateral, Subordinate	No
2993	Cedar Elm	15.5	15.5		Yes
2994	Cedar Elm	12	0	Unilateral	No
2995	Cedar Elm	11.25	0	Unilateral	No
2996	Cedar Elm	7	0	Subordinate	No
2997	Cedar Elm	21.5	21.5		Yes
2998	Bois d'Arc	10.25	0	Unilateral, Subordinate	No
2999	Hackberry	10.5	0	Unilateral, Subordinate	No
3000	Cedar Elm	15.25	0	Unilateral	No
3001	Cedar Elm	15	0	Unilateral	No
3002	Green Ash	19.25	0	Compression With 3003, Decline, Pic 97	No
3003	Cedar Elm	27.5	0	Decay Column, Bores, Pic 97	No
3004	Cedar Elm	14.75	0	Subordinate, Unilateral	No
3005	Cedar Elm	9.75	0	Unilateral, Subordinate	No
3006	Cedar Elm	16.25	16.25		Yes
3007	Cedar Elm	17.75	0	Unilateral	No
3008	Cedar Elm	15.75	0	Unilateral, Included Bark, Dual Leader, Pic 86	No
3009	Cedar Elm	15.5	0	Unilateral	No
3010	Cedar Elm	9	0	Unilateral, Subordinate	No
3011	Cedar Elm	14.5	0	Unilateral, Subordinate	No
3012	Cedar Elm	9	0	Unilateral, Subordinate	No
3013	Cedar Elm	21.5	21.5		Yes
3014	Cedar Elm	17.75	0	Dual Leader, Included Bark, Pic 98	No
3015	Cedar Elm	17.25	17.25		Yes
3016	Cedar Elm	16.25	0	Unilateral, Dual Leader, Pic 96	No
3017	Cedar Elm	10.25	0	Unilateral, Subordinate	No
3018	Pecan	27.5	27.5		Yes
3019	American Elm	8.5	8.5		Yes
3020	Hackberry	8.25	0	Not Protected	No
3021	Cedar Elm	6.5	6.5		Yes
3022	Burr Oak	7.25	7.25		Yes
3023	American Elm	24.5	0	Multi Trunk, Included Bark, Pic 108	No
3024	American Elm	10.75	10.75		Yes
3025	Hackberry	15.25	0	Unilateral, Subordinate	No
3026	American Elm	25.5	0	Decay Column, Wet Wood, Included Bark, Pic 103	No

11 of 72

Easthaven Tree Survey
5/8/2013

Tree Tag #	Common Name	Total DBH	Mitigation Inches	Condition Notes/Pic #	Protected
3027	Pecan	34.5	0	Unilateral	No
3028	Green Ash	23.75	0	Unilateral, Subordinate, Basal Decay, Pic 102	No
3029	Green Ash	23	23		Yes
3030	American Elm	9.5	0	Unilateral	No
3031	Hackberry	13.75	0	Unilateral	No
3032	Hackberry	12	0	Unilateral, Subordinate	No
3033	Green Ash	15	0	Half Missing, Decay, Pic 99	No
3034	Green Ash	16.75	0	Dual Leader, Pic 100	No
3035	Green Ash	16.5	0	Unilateral	No
3036	Green Ash	17.5	0	Unilateral,	No
3037	Green Ash	10.5	0	Unilateral, Subordinate, Falling Pic 193	No
3038	Green Ash	22.5	0	Unilateral, Borers, 194	No
3039	Bois d'Arc	11	0	Dual Leader, Included Bark, 195	No
3040	Green Ash	16.75	0	Unilateral, Subordinate, Falling, Pic 196	No
3041	Cedar Elm	11	0	Unilateral, Subordinate	No
3042	Cedar Elm	13	0	Unilateral, Subordinate	No
3043	Cedar Elm	9	0	Unilateral, Subordinate	No
3044	Green Ash	14	0	Unilateral, Subordinate	No
3045	Green Ash	27	0	Unilateral, Subordinate, Decay Column, Hollow, Pic 188	No
3046	Green Ash	12.75	0	Unilateral, Subordinate	No
3047	Cedar Elm	29	0	Dual, Included Bark, Pic 189	No
3048	Cedar Elm	19.25	0	Hollow, Pic 190	No
3049	Cedar Elm	9.5	0	Unilateral, Subordinate	No
3050	Cedar Elm	13.5	0	Unilateral, Subordinate	No
3051	Green Ash	7.25	0	Dual Included Bark, Pic 128	No
3052	Hackberry	10.5	0	Decay, Included bark, Pic 127	No
3053	American Elm	13.75	0	Dual Leader, Included Bark, Pic 126	No
3054	Green Ash	8.25	0	Trunk Damage, Pic 129	No
3055	American Elm	13.5	0	Unilateral, Dual Leader, Included Bark, Pic 124	No
3056	Cedar Elm	7	0	Unilateral	No
3057	Cedar Elm	9.25	0	Dual Leader, Included Bark, Pic 151	No
3058	Green Ash	6.25	0	Dual Leader, Included Bark, Pic 150	No
3059	Green Ash	6.5	0	Unilateral, Dual Leader	No
3060	Cedar Elm	6	0	Split, Pic 149	No
3061	Green Ash	6.5	0	Raised Grade, Pic 142	No
3062	Cedar Elm	17.25	0	Decay Column, Pic 95	No
3063	Cedar Elm	11.25	0	Unilateral, Subordinate	No
3064	Cedar Elm	15.75	0	Flair Occlusion, Decay, Pic 94	No

12 of 72

Easthaven Tree Survey
5/8/2013

Tree Tag #	Common Name	Total DBH	Mitigation Inches	Condition Notes/Pic #	Protected
3065	Cedar Elm	15.5	0	No Flair, Decay Column, Decline, Pic 90	No
3066	Cedar Elm	24.25	24.5		Yes
3067	Cedar Elm	8.5	0	Unilateral, Subordinate, No Flair, Pic 91	No
3068	Cedar Elm	10.75	0	Unilateral, Subordinate	No
3069	Cedar Elm	13.75	13.75		Yes
3070	Cedar Elm	11	11		Yes
3071	Cedar Elm	12	0	Unilateral	No
3072	Chittum	14	0	Decay Column, Pic 179	No
3073	Cedar Elm	10.5	0	Unilateral	No
3074	Cedar Elm	17	0	Decay Column, Pic 180	No
3075	Cedar Elm	16.25	16.25		Yes
3076	American Elm	10.75	0	Unilateral, Subordinate	No
3077	Hackberry	10.75	10.75		Yes
3078	Cedar Elm	8	0	Subordinate, Unilateral	No
3079	American Elm	9.25	9.25		Yes
3080	Hackberry	13.25	0	Unilateral, Subordinate, Decay Column, Pic 104	No
3081	American Elm	30	0	Decay Column, Hazardous, 198	No
3082	Green Ash	14.5	0	Unilateral, Subordinate	No
3083	American Elm	22.25	0	Unilateral, Hazardous, Pic 199	No
3084	Cedar Elm	8	0	Unilateral, Subordinate, Decay, Pic 200	No
3085	Cedar Elm	10	0	Unilateral, Subordinate	No
3086	Cedar Elm	14	0	Unilateral	No
3087	Green Ash	12.75	0	Unilateral, Subordinate, Pic 201	No
3088	Bois d'Arc	6.5	0	Not Protected	No
3089	Hackberry	7.25	0	Not Protected	No
3090	Hackberry	8	0	Not Protected	No
3091	Cedar Elm	6.5	0	Subordinate	No
3092	Burr Oak	6.75	0	Subordinate	No
3093	Bois d'Arc	7	0	Not Protected	No
3094	Bois d'Arc	12.25	0	Dual Leader, Included Bark, Pic 215	No
3095	American Elm	7	0	Unilateral, Subordinate	No
3096	Hackberry	12.5	0	Included Bark, Pic 214	No
3097	Hackberry	6.5	0	Not Protected	No
3098	Bois d'Arc	7	0	Not Protected	No
3099	Cedar Elm	8	8		Yes
3100	Green Ash	7.5	0	Dual Leader, Decay, Pic 216	No
3101	Hackberry	7.5	0	Not Protected	No
3102	Green Ash	11.75	0	Dual Leader, Included Bark, Pic 213	No

13 of 72

Easthaven Tree Survey
5/8/2013

Tree Tag #	Common Name	Total DBH	Mitigation Inches	Condition Notes/Pic #	Protected
3103	Bois d'Arc	9	0	Not Protected	No
3104	Bois d'Arc	11.75	0	Multi Trunk, Included Bark, Pic 212	No
3105	Green Ash	8.25	8.25		Yes
3106	Hackberry	6.5	0	Not Protected	No
3107	Bois d'Arc	8.75	0	Not Protected	No
3108	Bois d'Arc	7.25	0	Not Protected	No
3109	Hackberry	8	0	Not Protected	No
3110	American Elm	7	7		Yes
3111	Slippery Elm	6.5	6.5		Yes
3112	American Elm	12	0	Grade Change, Pic 219	No
3113	Green Ash	8.5	0	Unilateral	No
3114	Green Ash	8	0	Unilateral	No
3115	American Elm	14	14		Yes
3116	American Elm	7.25	0	Unilateral, Subordinate	No
3117	Bois d'Arc	14.75	0	Dual Leader, Included Bark Pic 218	No
3118	Hackberry	6.5	0	Not Protected	No
3119	American Elm	7	0	Subordinate	No
3120	American Elm	8.25	0	Unilateral, Subordinate	No
3121	Green Ash	6.75	0	Dual Leader, Included Bark	No
3122	Hackberry	8.75	0	Not Protected	No
3123	Bois d'Arc	7.25	0	Not Protected	No
3124	Bois d'Arc	7.75	0	Not Protected	No
3125	Hackberry	10.25	10.25		Yes
3126	Hackberry	8.5	0	Not Protected	No
3127	Hackberry	7	0	Not Protected	No
3128	Hackberry	6.75	0	Not Protected	No
3129	Green Ash	11.25	0	Dual Leader, Included Bark, Pic 211	No
3130	Hackberry	9.75	0	Not Protected	No
3131	Hackberry	9.25	0	Not Protected	No
3132	Hackberry	11.25	0	Unilateral, Dual Leader, Included Bark, Pic 217	No
3133	Hackberry	7	0	Not Protected	No
3134	Hackberry	7.5	0	Not Protected	No
3135	Hackberry	7	0	Not Protected	No
3136	Hackberry	9.5	0	Not Protected	No
3137	Bois d'Arc	11.75	0	Multi Trunk, Included Bark	No
3138	Hackberry	7.5	0	Not Protected	No
3139	Bois d'Arc	6.5	0	Not Protected	No
3140	Hackberry	7	0	Not Protected	No

14 of 72

Easthaven Tree Survey
5/8/2013

Tree Tag #	Common Name	Total DBH	Mitigation Inches	Condition Notes/Pic #	Protected
3141	American Elm	11.75	0	Unilateral	No
3142	Hackberry	8.5	0	Not Protected	No
3143	American Elm	19.75	19.75		Yes
3144	Bois d'Arc	7	0	Not Protected	No
3145	American Elm	14.75	0	Dual Leader, Included Bark, Unilateral, Pic 220	No
3146	American Elm	10.5	10.5		Yes
3147	American Elm	7.25	0	Unilateral, Subordinate	No
3148	Green Ash	9.25	0	Dual Leader, Included Bark	No
3149	American Elm	9.75	9.75		Yes
3150	Slippery Elm	7.75	0	Unilateral, Subordinate	No
3151	Slippery Elm	9	0	Unilateral, Terminal Dieback, Pic 227	No
3152	Cedar Elm	6.75	6.75		Yes
3153	American Elm	9.25	9.25		Yes
3154	Cedar Elm	8.75	8.75		Yes
3155	Green Ash	16.5	0	Subordinate, Unilateral, Decay Column, Pic 109	No
3156	American Elm	24.5	0	Multi Trunk, Included Bark, Wire Girdled, Pic 109	No
3157	Bois d'Arc	24.5	0	Multi Trunk, Included Bark	No
3158	Green Ash	13.25	0	Decay, Pic 230	No
3159	Hackberry	8	0	Not Protected	No
3160	Hackberry	8	0	Not Protected	No
3161	Cedar Elm	9.25	0	Dual Leader, Included Bark	No
3162	Bois d'Arc	9.25	0	Not Protected	No
3163	Hackberry	6.5	0	Not Protected	No
3164	Bois d'Arc	8.25	0	Not Protected	No
3165	Cedar Elm	7	7		Yes
3166	Hackberry	7.5	0	Not Protected	No
3167	Green Ash	6.75	6.75		Yes
3168	Cedar Elm	11.75	0	Dual Leader, Included Bark, Pic 226	No
3169	Hackberry	9.75	0	Not Protected	No
3170	Hackberry	6.75	0	Not Protected	No
3171	Hackberry	7	0	Not Protected	No
3172	Cedar Elm	6.75	0	Dual Leader, Included Bark	No
3173	Bois d'Arc	16	0	Multi Trunk, Included Bark	No
3174	Hackberry	7.25	0	Not Protected	No
3175	Hackberry	7	0	Not Protected	No
3176	Cedar Elm	8.5	8.5		Yes
3177	Slippery Elm	6.5	0	Unilateral, Subordinate	No
3178	Hackberry	7	0	Not Protected	No

15 of 72

Easthaven Tree Survey
5/8/2013

Tree Tag #	Common Name	Total DBH	Mitigation Inches	Condition Notes/Pic #	Protected
3179	Green Ash	8	0	Unilateral	No
3180	Hackberry	7.25	0	Not Protected	No
3181	Hackberry	8	0	Not Protected	No
3182	Hackberry	8.75	0	Not Protected	No
3183	Hackberry	8	0	Not Protected	No
3184	Hackberry	6.5	0	Not Protected	No
3185	Cedar Elm	15.25	0	Unilateral, Subordinate	No
3186	Burr Oak	22	22		Yes
3187	Green Ash	23.25	0	Hypoxylon, Decay, Pic 208	No
3188	Green Ash	17.5	0	Uni, Subordinate, Decay, Pic 209	No
3189	Green Ash	15.5	0	Unilateral, Subordinate,	No
3190	Bois d'Arc	25.25	0	Multi, Included Bark, Pic 206	No
3191	Hackberry	15.25	0	Decay, 207	No
3192	Hackberry	12.5	12.5		Yes
3193	Hackberry	12	0	Severe Decay, Pic 205	No
3194	Hackberry	13.5	0	Twisted With 3195, Pic 204	No
3195	Cedar Elm	14.5	0	Unilateral, Subordinate, 3194 Twisted Around Pic 204	No
3196	Green Ash	14.75	0	Unilateral, Subordinate	No
3197	Green Ash	9.25	0	Unilateral, Subordinate	No
3198	Cedar Elm	11	0	Unilateral, Subordinate	No
3199	Cedar Elm	9.75	0	Unilateral, Subordinate	No
3212	Green Ash	9.25	9.25		Yes
3213	Green Ash	8.75	8.75		Yes
3214	Green Ash	7	7		Yes
3215	Cedar Elm	11.25	0	Dual Leader, Included Bark, Pic 222	No
3216	Green Ash	10.75	0	Unilateral	No
3217	Green Ash	7	7		Yes
3218	Green Ash	9	0	Unilateral	No
3219	Green Ash	7.25	0	Unilateral, Subordinate	No
3220	Green Ash	8	8		Yes
3221	Green Ash	7.5	0	Unilateral	No
3222	Cedar Elm	10.5	0	Dual Leader, Included Bark	No
3223	Hackberry	6	0	Not Protected	No
3224	Hackberry	8.25	0	Not Protected	No
3225	Bois d'Arc	22.75	0	Multi Trunk, Included Bark, Pic 221	No
3226	Hackberry	6.75	0	Not Protected	No
3227	Green Ash	9	9		Yes
3228	Hackberry	6.25	0	Not Protected	No

16 of 72

Easthaven Tree Survey
5/8/2013

Tree Tag #	Common Name	Total DBH	Mitigation Inches	Condition Notes/Pic #	Protected
3229	Hackberry	7	0	Not Protected	No
3230	Hackberry	16	0	Dual Leader, Included Bark	No
3231	Bois d'Arc	8.5	0	Not Protected	No
3232	Bois d'Arc	9	0	Not Protected	No
3233	Cedar Elm	6.5	0	Unilateral, Subordinate	No
3234	Green Ash	16.75	0	Multi Trunk, Included Bark	No
3235	Green Ash	9.25	0	Unilateral, Dual Leader, Included Bark	No
3236	Green Ash	8.25	0	Dual Leader, Included Bark	No
3237	Green Ash	11.5	0	Unilateral, Dual Leader, Included Bark	No
3238	Hackberry	7.25	0	Not Protected	No
3239	Green Ash	11.25	0	Dual Leader, Included Bark	No
3240	Green Ash	7.25	0	Unilateral, Decay, Borers, Pic 231	No
3241	Slippery Elm	6.25	0	Dual Leader	No
3242	Green Ash	11.5	11.5		Yes
3243	Cedar Elm	7	7		Yes
3244	Bois d'Arc	9.75	0	Not Protected	No
3245	Cedar Elm	6	0	Dual Leader, Included Bark	No
3246	Live Oak	8	0	Planted By Neighbors, Multi Trunk, Included Bark	No
3247	Live Oak	7.5	0	Planted By Neighbors, Dual Leader, Included Bark	No
3248	Live Oak	11.75	0	Planted By Neighbors, Multi Trunk, Included Bark	No
3249	Green Ash	22.75	0	Dual Leader, Included Bark, Grade Raised, Pic 233	No
3250	Green Ash	29.5	0	Multi Trunk, Included Bark, Decay Pic 232	No
3251	Cypress	7.5	0	Planted By Neighbors	No
3252	Cypress	10.5	0	Planted By Neighbors	No
3253	Cypress	9	0	Planted By Neighbors	No
3254	Cypress	6.25	0	Planted By Neighbors	No
3255	Green Ash	9.25	0	Unilateral, Subordinate	No
3256	Bois d'Arc	6.5	0	Not Protected	No
3257	Green Ash	6.75	0	Unilateral, Subordinate	No
3258	Bois d'Arc	7.25	0	Not Protected	No
3259	Honey Locust	9	0	Unilateral, Subordinate	No
3260	American Elm	12	0	Unilateral, Subordinate	No
3261	American Elm	14.25	14.25		Yes
3262	Bois d'Arc	12.5	0	Dual Leader, Included Bark, Unilateral, Subordinate	No
3263	Bois d'Arc	9.5	0	Not Protected	No
3264	Cedar Elm	7.75	7.75		Yes
3265	Hackberry	16	0	Included Bark	No
3266	Hackberry	6.25	0	Not Protected	No

17 of 72

Easthaven Tree Survey
5/8/2013

Tree Tag #	Common Name	Total DBH	Mitigation Inches	Condition Notes/Pic #	Protected
3267	Pecan	8.75	8.75		Yes
3268	Hackberry	7	0	Not Protected	No
3269	Bois d'Arc	9	0	Not Protected	No
3270	Bois d'Arc	6.75	0	Not Protected	No
3271	Hackberry	11.25	11.25		Yes
3272	Bois d'Arc	6.75	0	Not Protected	No
3273	Hackberry	9.5	0	Not Protected	No
3274	Green Ash	7.25	7.25		Yes
3275	Green Ash	12	0	Dual Leader, Included Bark	No
3276	Bois d'Arc	7	0	Not Protected	No
3277	Hackberry	8.25	0	Not Protected	No
3278	Green Ash	7.5	0	Unilateral, Subordinate	No
3279	Hackberry	8.5	0	Not Protected	No
3280	Bois d'Arc	10.5	0	Unilateral, Included Bark, Dual Leader	No
3281	Bois d'Arc	12.25	0	Multi Trunk, Included Bark, Unilateral, Subordinate	No
3282	Bois d'Arc	7.75	0	Not Protected	No
3283	Green Ash	6.25	0	Unilateral, Subordinate	No
3284	Green Ash	12.75	0	Unilateral, Included Bark	No
3285	Green Ash	14.5	0	Dual Leader, Included Bark	No
3286	Green Ash	8.5	0	Unilateral, Subordinate	No
3287	Hackberry	9	0	Not Protected	No
3288	Cedar Elm	10.5	0	Unilateral, Included Bark	No
3289	Green Ash	8.25	0	Unilateral, Subordinate	No
3290	Green Ash	7	0	Unilateral, Subordinate, Dual Leader, Decay	No
3291	Hackberry	7.75	0	Not Protected	No
3292	Hackberry	8.5	0	Not Protected	No
3293	Hackberry	7	0	Not Protected	No
3294	Hackberry	10	0	Unilateral, Dual leader, Included Bark	No
3295	Hackberry	6.25	0	Not Protected	No
3296	Hackberry	8	0	Not Protected	No
3297	Hackberry	8.75	0	Not Protected	No
3298	Hackberry	9.25	0	Not Protected	No
3299	Hackberry	8	0	Not Protected	No
3300	Hackberry	8	0	Dead	No
3301	Hackberry	7.75	0	Not Protected	No
3302	Hackberry	8.25	0	Not Protected	No
3303	Hackberry	6.75	0	Not Protected	No
3304	Hackberry	12	12		Yes

18 of 72

Easthaven Tree Survey
5/8/2013

Tree Tag #	Common Name	Total DBH	Mitigation Inches	Condition Notes/Pic #	Protected
3305	Hackberry	6.5	0	Not Protected	No
3306	Hackberry	7.75	0	Not Protected	No
3307	Hackberry	9.75	0	Not Protected	No
3308	Hackberry	9.5	0	Not Protected	No
3309	Hackberry	9.5	0	Not Protected	No
3310	Hackberry	9	0	Not Protected	No
3311	Hackberry	7.5	0	Not Protected	No
3312	Hackberry	7	0	Not Protected	No
3313	Hackberry	8	0	Not Protected	No
3314	Hackberry	9.75	0	Not Protected	No
3315	Hackberry	7.25	0	Not Protected	No
3316	Hackberry	9	0	Not Protected	No
3317	Bois d'Arc	10	0	Dual Leader,	No
3318	Chittum	19.5	0	Multi Trunk	No
3319	Hackberry	8.75	0	Not Protected	No
3320	Hercules Club	11.25	0	Unilateral, Subordinate, Decline	No
3321	Cedar Elm	14.25	14.25		Yes
3322	Hackberry	7	0	Not Protected	No
3323	Hackberry	7.5	0	Not Protected	No
3324	Hackberry	9.75	0	Not Protected	No
3325	Bois d'Arc	12.75	0	Dual Leader, Included Bark, Decline	No
3326	Green Ash	8	0	Unilateral, Basal Decay, Pic 238	No
3327	American Elm	7.75	0	Unilateral, Subordinate	No
3328	Hackberry	7.25	0	Not Protected	No
3329	Chittum	9.5	0	Subordinate	No
3330	Green Ash	7.75	7.75		Yes
3331	Green Ash	8.75	0	Unilateral	No
3332	Hackberry	10.5	0	Basal Decay, Pic 237	No
3333	Green Ash	9	0	Unilateral, Subordinate	No
3334	Bois d'Arc	18.25	0	Dual Leader, Included Bark	No
3335	Green Ash	13	0	Dual Leader, Included, Unilateral, Subordinate	No
3336	Green Ash	13.5	0	Dual Leader, Included Bark	No
3337	Hackberry	11.5	11.5		Yes
3338	Green Ash	11	11		Yes
3339	Bois d'Arc	30.75	0	Multi Trunk, Included Bark	No
3340	Green Ash	11.75	11.75		Yes
3341	Green Ash	8.25	0	Unilateral, Subordinate	No
3342	Green Ash	8.5	0	Unilateral, Subordinate	No

19 of 72

Easthaven Tree Survey
5/8/2013

Tree Tag #	Common Name	Total DBH	Mitigation Inches	Condition Notes/Pic #	Protected
3343	Bois d'Arc	11	0	Dual Leader, Included Bark, Unilateral, Subordinate	No
3344	Green Ash	10.25	10.25		Yes
3345	Green Ash	8.5	0	Unilateral, Subordinate	No
3346	Green Ash	11	0	Unilateral	No
3347	Green Ash	7	0	Unilateral, Subordinate	No
3348	Green Ash	12.25	0	Dual Leader, Included Bark	No
3349	Green Ash	10.75	10.75		Yes
3350	Green Ash	9.25	9.25		Yes
3351	Green Ash	11	11		Yes
3352	Green Ash	8.25	0	Dual Leader, Included Bark, Subordinate	No
3353	Green Ash	8.5	0	Unilateral, Subordinate	No
3354	Green Ash	8.25	8.25		Yes
3355	Green Ash	10	10		Yes
3356	Green Ash	10.5	10.5		Yes
3357	Cedar Elm	7	7		Yes
3358	Green Ash	6.25	0	Unilateral, Subordinate	No
3359	Green Ash	9	0	Unilateral, Subordinate	No
3360	Green Ash	7.75	0	Unilateral, Subordinate	No
3361	Green Ash	6.5	6.5		Yes
3362	Green Ash	10.25	10.25		Yes
3363	Green Ash	8	8		Yes
3364	Green Ash	11.25	11.25		Yes
3365	Green Ash	6.5	0	Unilateral, Subordinate	No
3366	Green Ash	7.25	0	Dual Leader	No
3367	Green Ash	7	0	Unilateral, Subordinate	No
3368	Green Ash	6.75	6.75		Yes
3369	Green Ash	7.75	0	Dual Leader, Unilateral, Subordinate	No
3370	Green Ash	8	0	Unilateral	No
3371	Green Ash	9	0	Unilateral, Subordinate	No
3372	Bois d'Arc	14.5	0	Unilateral, Dual Leader, Included Bark, Pic 235	No
3373	Hackberry	7.5	0	Not Protected	No
3374	Green Ash	8.75	8.75		Yes
3375	Green Ash	7.5	7.5		Yes
3376	Green Ash	8.25	8.25		Yes
3377	Hackberry	12	12		Yes
3378	Green Ash	6.5	0	Unilateral, Subordinate	No
3379	Green Ash	7.5	0	Unilateral	No
3380	American Elm	11.5	11.5		Yes

20 of 72

Easthaven Tree Survey
5/8/2013

Tree Tag #	Common Name	Total DBH	Mitigation Inches	Condition Notes/Pic #	Protected
3381	American Elm	12.25	12.25		Yes
3382	Green Ash	8.5	0	Unilateral	No
3383	Green Ash	6.75	0	Unilateral, Subordinate	No
3384	Green Ash	8	8		Yes
3385	Green Ash	11	11		Yes
3386	Bois d'Arc	15.5	0	Unilateral,	No
3387	Bois d'Arc	30	0	Unilateral, Dual Leader, Included Bark, Pic 239	No
3388	Bois d'Arc	43.5	0	Multi Trunk, Included Bark, Pic 240	No
3389	Hackberry	13	0	Unilateral, Subordinate	No
3390	Green Ash	8.75	8.75		Yes
3391	Hackberry	8.25	0	Not Protected	No
3392	Bois d'Arc	18.5	0	Decline, Terminal Dieback	No
3393	American Elm	9.25	9.25		Yes
3394	Green Ash	9.5	0	Dual Leader, Included Bark	No
3395	Hackberry	9.25	0	Not Protected	No
3396	Hackberry	16	0	Dual Leader, Included Bark, Pic 250	No
3397	Pecan	10	10		Yes
3398	Bois d'Arc	22.75	0	Dual Leader, Included Bark	No
3399	Green Ash	7.5	7.5		Yes
3400	Bois d'Arc	9.75	0	Not Protected	No
3401	Hackberry	6.5	0	Not Protected	No
3402	Siberian Elm	16.75	0	Declining	No
3403	Bois d'Arc	19.5	0	Included Bark,	No
3404	Bois d'Arc	23.5	0	Multi Trunk, Included Bark, Unilateral	No
3405	Bois d'Arc	8	0	Not Protected	No
3406	Bois d'Arc	39	0	Dual Leader, Included Bark, Hollow, Pic 261	No
3407	Bois d'Arc	28	0	Dual Leader, Included Bark	No
3408	Bois d'Arc	12.5	0	Unilateral, Subordinate, Decline	No
3409	Bois d'Arc	21.75	0	Dual Leader, Included Bark, Hollow	No
3410	Bois d'Arc	8	0	Not Protected	No
3411	Hackberry	7.75	0	Not Protected	No
3412	Hackberry	7	0	Not Protected	No
3413	Hercules Club	9	0	Hollow	No
3414	Hackberry	6.75	0	Not Protected	No
3415	Cedar Elm	5.25	0	Not Protected	No
3416	Cedar Elm	8.25	0	Unilateral, Subordinate	No
3417	Hackberry	7.75	0	Not Protected	No
3418	Bois d'Arc	17.75	0	Fallen, Decline	No

21 of 72

Easthaven Tree Survey
5/8/2013

Tree Tag #	Common Name	Total DBH	Mitigation Inches	Condition Notes/Pic #	Protected
3419	Hackberry	9.75	0	Not Protected	No
3420	Cedar Elm	12.5	12.5		Yes
3421	Hackberry	6.75	0	Not Protected	No
3422	Hackberry	10.25	0	Unilateral, Subordinate	No
3423	Hackberry	7.25	0	Not Protected	No
3424	Hackberry	12.5	0	Broken Fallen, Pic 255	No
3425	Hackberry	9.5	0	Not Protected	No
3426	Cedar Elm	6.5	6.5		Yes
3427	Bois d'Arc	8.75	0	Not Protected	No
3428	Hackberry	9.5	0	Not Protected	No
3429	Hackberry	6.5	0	Not Protected	No
3430	Hackberry	12.25	0	Included Bark, Raised Grade, Pic 253	No
3431	Hackberry	8.5	0	Not Protected	No
3432	Bois d'Arc	8	0	Not Protected	No
3433	Bois d'Arc	7	0	Not Protected	No
3434	Cedar Elm	8.75	0	Dual Leader, Included Bark	No
3435	Hackberry	7.75	0	Not Protected	No
3436	Hackberry	6.5	0	Not Protected	No
3437	Hackberry	7.75	0	Not Protected	No
3438	Hackberry	15.25	0	Wire Girdled, Basal Decay, Pic 254	No
3439	Hackberry	8	0	Not Protected	No
3440	Hercules Club	6.5	0	Subordinate, Unilateral, Decay Column	No
3441	Hackberry	8.5	0	Not Protected	No
3442	Hackberry	8	0	Not Protected	No
3443	Bois d'Arc	9	0	Not Protected	No
3444	Hackberry	7	0	Not Protected	No
3445	Bois d'Arc	7.5	0	Not Protected	No
3446	Bois d'Arc	7	0	Not Protected	No
3447	Green Ash	7.5	7.5		Yes
3448	Hackberry	9.75	0	Not Protected	No
3449	Cedar Elm	6.25	6.25		Yes
3450	Hackberry	8.75	0	Not Protected	No
3451	Hackberry	8	0	Not Protected	No
3452	Hackberry	7.75	0	Not Protected	No
3453	Hackberry	9.75	0	Not Protected	No
3454	American Elm	10.25	0	Unilateral, Subordinate	No
3455	Hackberry	8.5	0	Not Protected	No
3456	Bois d'Arc	12	0	Dual Leader, Included Bark, Female	No

22 of 72

Easthaven Tree Survey
5/8/2013

Tree Tag #	Common Name	Total DBH	Mitigation Inches	Condition Notes/Pic #	Protected
3457	Hackberry	7.5	0	Not Protected	No
3458	Cedar Elm	6.25	0	Unilateral, Subordinate	No
3459	Bois d'Arc	8.5	0	Not Protected	No
3460	Bois d'Arc	18.75	0	Multi Trunk, Included Bark, Raised Grade	No
3461	Cedar Elm	7.5	0	Dual Leader, Included Bark, Raised Grade	No
3462	Pecan	6.5	0	Subordinate	No
3463	Bois d'Arc	15.5	0	Multi Trunk, Included Bark	No
3464	Cedar Elm	7.25	7.25		Yes
3465	American Elm	7	0	Unilateral, Subordinate	No
3466	Bois d'Arc	8.75	0	Not Protected	No
3467	Bois d'Arc	11	0	Multi Trunk, Included Bark	No
3468	Bois d'Arc	7	0	Not Protected	No
3469	Hackberry	6.75	0	Not Protected	No
3470	Bois d'Arc	7	0	Not Protected	No
3471	Slippery Elm	8.75	0	Dual Leader, Included Bark	No
3472	Hackberry	8.25	0	Not Protected	No
3473	Bois d'Arc	9.75	0	Not Protected	No
3474	Bois d'Arc	7	0	Not Protected	No
3475	Bois d'Arc	9.5	0	Not Protected	No
3476	Bois d'Arc	19.25	0	Multi Trunk, Included Bark	No
3477	Green Ash	7	0	Unilateral, Subordinate	No
3478	Green Ash	7.75	0	Unilateral, Subordinate, Dual Leader	No
3479	Hackberry	7	0	Not Protected	No
3480	Bois d'Arc	7	0	Not Protected	No
3481	Green Ash	6.75	6.75		Yes
3482	Bois d'Arc	7	0	Not Protected	No
3483	Bois d'Arc	8.25	0	Not Protected	No
3484	Bois d'Arc	8	0	Not Protected	No
3485	Green Ash	7	0	Unilateral, Subordinate	No
3486	American Elm	16	16		Yes
3487	Green Ash	7	0	Unilateral, Subordinate	No
3488	Green Ash	15	0	Multi Trunk, Included Bark, Unilateral	No
3489	Green Ash	9	0	Unilateral, Subordinate	No
3490	Green Ash	6.5, 2.5	0	Dual Leader	No
3491	Hackberry	8.25	0	Not Protected	No
3492	American Elm	11.75	0	Unilateral	No
3493	Hackberry	7	0	Not Protected	No
3494	Hackberry	12	0	Dual Leader, Included Bark	No

23 of 72

Easthaven Tree Survey
5/8/2013

Tree Tag #	Common Name	Total DBH	Mitigation Inches	Condition Notes/Pic #	Protected
3495	Bois d'Arc	6.5	0	Not Protected	No
3496	Bois d'Arc	9	0	Not Protected	No
3497	American Elm	7	0	Unilateral, Subordinate	No
3498	Hackberry	6.75	0	Not Protected	No
3499	Cedar Elm	6	6		Yes
3500	Bois d'Arc	9	0	Not Protected	No
3501	Cedar Elm	8	0	Dual Leader, Included Bark	No
3502	Green Ash	7.75	0	Dual Leader	No
3503	American Elm	10.5	10.5		Yes
3504	Bois d'Arc	7.75	0	Not Protected	No
3505	Bois d'Arc	9	0	Not Protected	No
3506	Green Ash	11.75	0	Multi Trunk, Included Bark	No
3507	American Elm	7.75	7.75		Yes
3508	Green Ash	10.5	0	Dual Leader, Included Bark	No
3509	American Elm	6.5	0	Unilateral	No
3510	American Elm	6.5	6.5		Yes
3511	Bois d'Arc	7.75	0	Not Protected	No
3512	Green Ash	6.75	6.75		Yes
3513	Green Ash	6.75	6.75		Yes
3514	Bois d'Arc	12.25	0	Multi Trunk, Included Bark	No
3515	Bois d'Arc	15.5	0	Multi Trunk, Included Bark	No
3516	Cedar Elm	8	8		Yes
3517	Hackberry	9	0	Not Protected	No
3518	Hackberry	7	0	Not Protected	No
3519	Hackberry	7	0	Not Protected	No
3520	Hackberry	7.5	0	Not Protected	No
3521	Hackberry	6	0	Not Protected	No
3522	Hackberry	7.5	0	Not Protected	No
3523	Hackberry	9.75	0	Not Protected	No
3524	Hackberry	7.25	0	Not Protected	No
3525	American Elm	6.5	0	Across Fence, Unilateral	No
3526	Hackberry	12	12		Yes
3527	Hackberry	7	0	Not Protected	No
3528	Bois d'Arc	6.75	0	Not Protected	No
3529	Hackberry	7.75	0	Not Protected	No
3530	Bois d'Arc	11	0	Included Bark	No
3531	Cedar	9.25	9.25		Yes
3532	Hackberry	10.5	0	Top Broken Out, Pic 268	No

24 of 72

Easthaven Tree Survey
5/8/2013

Tree Tag #	Common Name	Total DBH	Mitigation Inches	Condition Notes/Pic #	Protected
3533	Hackberry	9	0	Not Protected	No
3534	Hackberry	6.5	0	Not Protected	No
3535	American Elm	8	0	Unilateral, Subordinate, Across Fence	No
3536	Hackberry	8.5	0	Not Protected	No
3537	Hackberry	7.5	0	Not Protected	No
3538	American Elm	6	0	Unilateral, Subordinate	No
3539	Hackberry	8.5	0	Not Protected	No
3540	Pecan	6.5	6.5		Yes
3541	American Elm	7.5	0	Unilateral	No
3542	Green Ash	9.25	0	Dual Leader, Included Bark	No
3543	American Elm	8.75	0	Unilateral	No
3544	Cedar Elm	6.5	6.5		Yes
3545	American Elm	6.25	6.25		Yes
3546	Green Ash	7.5	0	Dual Leader, Included Bark	No
3547	Green Ash	6.5	6.5		Yes
3548	Hackberry	12	0	Dual Leader, Canker, Pic264	No
3549	American Elm	7.5	0	Unilateral,	No
3550	Green Ash	9	9		Yes
3551	Slippery Elm	8.5	8.5		Yes
3552	American Elm	13.25	0	Included Bark	No
3553	Pecan	12.75	12.75		Yes
3554	Hackberry	16.25	16.25		Yes
3555	American Elm	8.25	0	Dual Leader, Included Bark	No
3556	Hackberry	8	0	Not Protected	No
3557	American Elm	9.5	0	Unilateral, Subordinate	No
3558	Cedar Elm	8	0	Dual Leader, Included Bark	No
3559	Hackberry	7.5	0	Not Protected	No
3560	Green Ash	7.5	7.5		Yes
3561	Hackberry	7.75	0	Not Protected	No
3562	Cedar Elm	6.75	6.75		Yes
3563	Green Ash	8	0	Dual Leader, Included Bark	No
3564	Hackberry	7	0	Not Protected	No
3565	Green Ash	7.5	7.5		Yes
3566	Green Ash	6.25	6.25		Yes
3567	Green Ash	8	8		Yes
3568	Green Ash	8	8		Yes
3569	Hackberry	9.75	0	Not Protected	No
3570	Cedar Elm	7	0	Dual Leader, Included Bark	No

25 of 72

Easthaven Tree Survey
5/8/2013

Tree Tag #	Common Name	Total DBH	Mitigation Inches	Condition Notes/Pic #	Protected
3571	Slippery Elm	7.5	7.5		Yes
3572	Hackberry	9.25	0	Not Protected	No
3573	Hackberry	7	0	Not Protected	No
3574	Hackberry	11.5	0	Dual Leader, Included Bark	No
3575	Green Ash	7.25	0	Unilateral	No
3576	Hackberry	7.25	0	Not Protected	No
3577	Hackberry	8	0	Not Protected	No
3578	Slippery Elm	8.5	0	Unilateral	No
3579	Slippery Elm	9	9		Yes
3580	Hercules Club	14.5	0	Multi Trunk, Included Bark, Decay	No
3581	American Elm	6	0	Unilateral, Subordinate	No
3582	American Elm	10	10		Yes
3583	American Elm	10	0	Unilateral	No
3584	Bois d'Arc	6.5	0	Not Protected	No
3585	Hackberry	8.5	0	Not Protected	No
3586	Green Ash	7.25	7.25		Yes
3587	Slippery Elm	9.25	9.25		Yes
3588	Cedar Elm	8.25	8.25		Yes
3589	Green Ash	8	8		Yes
3590	Cedar Elm	7.75	7.75		Yes
3591	Slippery Elm	13.25	13.25		Yes
3592	Cedar Elm	11.25	11.25		Yes
3593	Green Ash	8	0	Unilateral	No
3594	Cedar Elm	8	8		Yes
3595	Green Ash	7.75	7.75		Yes
3596	Green Ash	8	0	Unilateral	No
3597	Green Ash	6.5	6.5		Yes
3598	Green Ash	8	8		Yes
3599	American Elm	15.5	0	Falling In Pond, Unilateral, Subordinate, Pic 242	No
3600	Hackberry	9.5	0	Not Protected	No
3601	American Elm	9.5	9.5		Yes
3602	Green Ash	8	8		Yes
3603	American Elm	8.5	0	Unilateral, Subordinate	No
3613	Green Ash	7	0	Unilateral, Subordinate	No
3614	American Elm	11	0	Unilateral, Dual Leader, Included Bark, Pic 248	No
3615	Hackberry	8	0	Not Protected	No
3616	Cedar Elm	8	8		Yes
3617	Hackberry	9	0	Not Protected	No

26 of 72

Easthaven Tree Survey
5/8/2013

Tree Tag #	Common Name	Total DBH	Mitigation Inches	Condition Notes/Pic #	Protected
3618	Hackberry	11	0	Unilateral	No
3619	Cedar Elm	7	0	Unilateral, Subordinate	No
3620	Hackberry	9.75	0	Not Protected	No
3621	Hackberry	11	0	Unilateral, Subordinate	No
3622	Hackberry	13.5	0	Unilateral, Included Bark	No
3623	Slippery Elm	8	8		Yes
3624	Cedar Elm	11	0	Dual Leader, Included Bark	No
3625	Cedar Elm	9.25	0	Unilateral	No
3626	Hackberry	8.5	0	Not Protected	No
3627	American Elm	8.5	0	Unilateral, Subordinate, Dual Leader, Included Bark	No
3628	American Elm	9	9		Yes
3629	American Elm	15.5	0	Dual Leader, Included Bark, Pic247	No
3630	Hackberry	11.5	11.5		Yes
3631	Green Ash	8.5	8.5		Yes
3632	Green Ash	7.5	7.5		Yes
3633	Slippery Elm	8	0	Unilateral	No
3634	Bois d'Arc	20	0	Multi Trunk, Included Bark	No
3635	Bois d'Arc	17.5	0	Multi Trunk, Included Bark	No
3636	American Elm	12.5	12.5		Yes
3637	American Elm	9.25	0	Unilateral	No
3638	Hackberry	12.5	12.5		Yes
3639	Pecan	10.5	10.5		Yes
3640	Hackberry	12.5	0	Unilateral	No
3641	Cedar Elm	12.75	0	Unilateral	No
3642	American Elm	20.75	0	Severe Storm Damage, Vines, Decline, Pic 249	No
3645	Hackberry	15	0	Unilateral	No
3646	Hackberry	7	0	Not Protected	No
3647	Hackberry	13	13		Yes
3648	Hackberry	10.75	10.75		Yes
3651	Bois d'Arc	12.25	0	Dual Leader, Included Bark	No
3652	Bois d'Arc	16.5	0	Dual Leader, Included Bark, Pic 256	No
3653	American Elm	10.25	0	Dual Leader	No
3654	American Elm	9	0	Dual Leader, Included Bark	No
3655	Cedar Elm	11.5	11.5		Yes
3656	American Elm	11.25	0	Dual Leader, Included Bark	No
3657	American Elm	12.25	0	Unilateral, Subordinate	No
3658	Hackberry	11.25	11.25		Yes
3659	American Elm	15.75	0	Unilateral, Dual Leader, Included Bark	No

27 of 72

Easthaven Tree Survey
5/8/2013

Tree Tag #	Common Name	Total DBH	Mitigation Inches	Condition Notes/Pic #	Protected
3660	Siberian Elm	6.5	0	Top Missing, Subordinate, Pic 258	No
3661	American Elm	14.25	0	Dual Leader, Included Bark	No
3663	Hackberry	9.5	0	Not Protected	No
3664	American Elm	9	9		Yes
3665	American Elm	12.5	12.5		Yes
3666	American Elm	10.75	10.75		Yes
3667	American Elm	12	0	Subordinate, Dual Leader, Included Bark	No
3668	Pecan	11.25	11.25		Yes
3670	American Elm	14.25	0	Multi Trunk, Included Bark	No
3671	American Elm	10.25	0	Unilateral, Subordinate	No
3672	American Elm	23.75	23.75		Yes
3673	Cedar Elm	8	0	Unilateral, Subordinate	No
3674	Slippery Elm	9	0	Unilateral, Subordinate	No
3675	Hackberry	8.5	0	Not Protected	No
3676	Hackberry	15.5	15.5		Yes
3677	Hickory	14.25	0	Borers, Basal Decay, Pic 259	No
3678	American Elm	11.5	0	Unilateral	No
3679	Hackberry	10.25	0	Declining	No
3680	Hercules Club	14.25	0	Basal Decay, Borers, Pic 260	No
3681	American Elm	10.75	10.75		Yes
3682	Hackberry	14	14		Yes
3683	American Elm	9.5	0	Unilateral, Subordinate	No
3684	American Elm	9.5	0	Unilateral	No
3685	Pecan	8.5	8.5		Yes
3686	Pecan	8	0	Unilateral	No
3687	Pecan	11.75	0	Unilateral, Subordinate	No
3688	American Elm	12	0	Unilateral, Subordinate	No
3691	American Elm	7	0	Unilateral, Subordinate	No
3692	Green Ash	8	0	Unilateral, Subordinate, Decay, Column	No
3693	Pecan	25.5	0	Creek Bank, Erosion	No
3695	American Elm	14.25	0	Subordinate	No
3696	Pecan	29.75	0	Dual Leader, Included Bark, Pic 266	No
3697	Pecan	7.25	0	Unilateral, Subordinate	No
3698	Pecan	12	12		Yes
3699	Pecan	7	0	Unilateral, Subordinate	No
3700	Hackberry	11.25	11.25		Yes
3701	Pecan	8.75	0	Unilateral	No
3702	Pecan	7.25	0	Unilateral, Subordinate	No

28 of 72

Easthaven Tree Survey
5/8/2013

Tree Tag #	Common Name	Total DBH	Mitigation Inches	Condition Notes/Pic #	Protected
3703	Pecan	10	10		Yes
3704	Pecan	9.5	9.5		Yes
3705	American Elm	7.25	7.25		Yes
3706	Pecan	10.5	0	Dual Leader, Included Bark	No
3707	Pecan	10	0	Unilateral, Grade Raised, Pic 263	No
3708	Green Ash	14	0	Dual Leader, Included Bark	No
3709	Cedar Elm	6.75	0	Unilateral, Subordinate, Dual Leader, Included Bark	No
3710	Pecan	8	8		Yes
3711	Green Ash	10.75	10.75		Yes
3712	Slippery Elm	8	0	Dual Leader, Included Bark	No
3713	Pecan	6.5	0	Unilateral	No
3714	Bois d'Arc	18.25	0	Multi Trunk, Included Bark	No
3715	American Elm	6.5	0	Unilateral, Subordinate	No
3716	Pecan	7.75	0	Unilateral, Subordinate	No
3717	American Elm	10.5	0	Dual Leader, Included Bark	No
3718	Pecan	9.5	9.5		Yes
3719	Pecan	8.5	0	Unilateral	No
3720	American Elm	10	0	Dual Leader, Included Bark	No
3721	American Elm	7.25	7.25		Yes
3722	American Elm	7.25	7.25		Yes
3723	American Elm	8.25	0	Unilateral, Dual Leader, Included Bark	No
3724	Hackberry	7.25	0	Not Protected	No
3725	Slippery Elm	7.5	0	Unilateral, Subordinate	No
3726	Bois d'Arc	18.5	0	Multi Trunk, Included Bark	No
3727	Hackberry	7	0	Not Protected	No
3728	American Elm	9.5	9.5		Yes
3729	Green Ash	8.25	0	Dual Leader, Included Bark	No
3730	Green Ash	7.25	7.25		Yes
3731	Green Ash	9	9		Yes
3732	Cedar Elm	9.75	9.75		Yes
3733	Green Ash	8.25	0	Dual Leader, Included Bark	No
3734	Green Ash	6.25	6.25		Yes
3735	Green Ash	8.25	8.25		Yes
3736	Green Ash	8.5	0	Dual Leader, Included Bark	No
3737	Pecan	7	7		Yes
3738	Pecan	8.25	8.25		Yes
3739	Bois d'Arc	7	0	Not Protected	No
3740	Pecan	7	7		Yes

29 of 72

Easthaven Tree Survey
5/8/2013

Tree Tag #	Common Name	Total DBH	Mitigation Inches	Condition Notes/Pic #	Protected
3741	Bois d'Arc	6.25	0	Not Protected	No
3742	Bois d'Arc	8.5	0	Not Protected	No
3743	Bois d'Arc	8.5	0	Not Protected	No
3744	American Elm	7.75	7.75		Yes
3745	Hackberry	6.5	0	Not Protected	No
3746	American Elm	8.5	8.5		Yes
3747	Bois d'Arc	9.5	0	Not Protected	No
3748	Bois d'Arc	9.25	0	Not Protected	No
3749	Bois d'Arc	6.25	0	Not Protected	No
3750	Pecan	8	8		Yes
3751	Hackberry	8.25	0	Not Protected	No
3752	Bois d'Arc	5.75	0	Not Protected	No
3753	American Elm	8.25	0	Unilateral	No
3754	Hercules Club	7	7		Yes
3755	Bois d'Arc	8	0	Not Protected	No
3756	American Elm	8	8		Yes
3757	American Elm	7.75	7.75		Yes
3758	Pecan	8.5	8.5		Yes
3759	Hercules Club	9.75	0	Unilateral, Subordinate	No
3760	Pecan	7.25	7.25		Yes
3761	Pecan	7.5	7.5		Yes
3762	China Berry	8	0	Unilateral	No
3763	Pecan	7	0	Subordinate	No
3764	Pecan	10	0	Unilateral, Subordinate	No
3765	American Elm	7	0	Unilateral, Subordinate	No
3766	Hackberry	6	0	Not Protected	No
3767	American Elm	8.5	0	Unilateral, Subordinate	No
3768	Hackberry	6.75	6.75		Yes
3769	Hackberry	7.5	7.5		Yes
3770	Hackberry	8	8		Yes
3771	American Elm	7.75	0	Unilateral, Subordinate, Wire Girdled	No
3772	Hackberry	7	7		Yes
3773	Hackberry	9.25	9.25		Yes
3774	Bois d'Arc	8	8		Yes
3775	American Elm	6.5	6.5		Yes
3776	American Elm	32.75	0	Unilateral, Included Bark	No
3777	Cedar Elm	12.5	12.5		Yes
3778	Bois d'Arc	8	8		Yes

30 of 72

Easthaven Tree Survey
5/8/2013

Tree Tag #	Common Name	Total DBH	Mitigation Inches	Condition Notes/Pic #	Protected
3779	Bois d'Arc	7.75	7.75		Yes
3780	Green Ash	7.75	0	Unilateral, Subordinate	No
3781	Green Ash	24	0	Unilateral, Falling In Creek	No
3782	Bois d'Arc	11	0	Creek Bank Erosion	No
3783	Pecan	16.75	0	Unilateral, Subordinate	No
3784	Bois d'Arc	7.5	0	Not Protected	No
3785	Bois d'Arc	6.25	0	Not Protected	No
3786	Pecan	32.25	32.25		Yes
3787	American Elm	8.5	0	Unilateral, Subordinate	No
3788	Bois d'Arc	17.25	0	Subordinate	No
3789	Green Ash	33.75	0	Decline, Borers	No
3790	Green Ash	19	0	Creek Bank, Erosion	No
3791	American Elm	12.5	0	Creek Bank, Erosion, Unilateral, Subordinate	No
3792	American Elm	16.5	0	Creek Bank, Erosion, Unilateral, Subordinate	No
3793	American Elm	15	0	Unilateral, Erosion	No
3794	American Elm	15.25	15.25		Yes
3795	Pecan	6.25	6.25		Yes
3796	Bois d'Arc	7.25	0	Not Protected	No
3797	Pecan	7.5	7.5		Yes
3798	Pecan	6.5	0	Unilateral, Subordinate	No
3799	American Elm	6.75	0	Unilateral, Subordinate	No
3800	Pecan	6.5	0	Unilateral, Subordinate	No
3801	Pecan	7	7		Yes
3802	Pecan	10.25	10.25		Yes
3803	Pecan	9.75	9.75		Yes
3804	Pecan	8.5	8.5		Yes
3805	Pecan	9	9		Yes
3806	Pecan	6.5	6.5		Yes
3807	China Berry	9.5	0	15 Foot Stump	No
3808	Hercules Club	8	0	Dead	No
3809	Pecan	12	12		Yes
3810	Green Ash	8	0	Unilateral, Erosion, Creek Bank	No
3811	China Berry	9	0	Dual Leader	No
3812	American Elm	13.5	0	Creek Bank Erosion	No
3813	American Elm	7.25	0	Unilateral, Subordinate, Creek Bank Erosion	No
3814	Green Ash	37.5	0	Basal Decay, Pic 272	No
3815	Pecan	25.25	25.25		Yes
3816	Pecan	21.5	0	Unilateral, Creek Bank Erosion, Pic 270	No

31 of 72

Easthaven Tree Survey
5/8/2013

Tree Tag #	Common Name	Total DBH	Mitigation Inches	Condition Notes/Pic #	Protected
3817	Pecan	11.25	0	Creek Bank Erosion, Pic 270	No
3818	Pecan	22.5	0	Unilateral	No
3819	Pecan	7	7		Yes
3820	Pecan	7.25	0	Unilateral, Subordinate	No
3821	Pecan	7	7		Yes
3822	Pecan	12.5	0	Dual Leader, Included Bark, Pic 271	No
3823	Pecan	7	7		Yes
3824	Pecan	6.25	6.25		Yes
3825	Pecan	6.25	6.25		Yes
3826	American Elm	8.5	8.5		Yes
3827	Pecan	7	0	Unilateral, Subordinate	No
3828	Green Ash	7.5	7.5		Yes
3829	American Elm	6	6		Yes
3830	American Elm	6.25	6.25		Yes
3831	Hackberry	7.5	0	Not Protected	No
3832	Bois d'Arc	12	0	Subordinate, Included Bark	No
3833	Green Ash	9.75	9.75		Yes
3834	Cedar Elm	7.5	7.5		Yes
3835	American Elm	14.5	14.5		Yes
3836	Green Ash	6	0	Unilateral, Subordinate	No
3837	Pecan	6.25	6.25		Yes
3838	Pecan	6	0	Unilateral, Subordinate	No
3839	Pecan	8.25	8.25		Yes
3840	Pecan	6.75	6.75		Yes
3841	Pecan	6.5	6.5		Yes
3842	Green Ash	7.5	7.5		Yes
3843	Green Ash	7	7		Yes
3844	American Elm	8.5	8.5		Yes
3845	Pecan	8.75	8.75		Yes
3846	Cedar Elm	6.5	6.5		Yes
3847	Green Ash	6.25	6.25		Yes
3848	American Elm	7	0	Creek Bank Erosion	No
3849	Pecan	32.75	0	Dual Leader, Included Bark	No
3850	American Elm	10.75	0	Unilateral, Subordinate	No
3851	Sycamore	18.5	0	Unilateral, Creek Bank Erosion	No
3852	Pecan	6.5	0	Unilateral, Subordinate	No
3853	Pecan	20	0	Creek Bank Erosion, Pic 269	No
3854	Green Ash	8.25	0	Unilateral, Subordinate, Creek Bank Erosion	No

32 of 72

Easthaven Tree Survey
5/8/2013

Tree Tag #	Common Name	Total DBH	Mitigation Inches	Condition Notes/Pic #	Protected
3855	American Elm	6.5	0	Unilateral, Subordinate, Creek Bank Erosion	No
3856	American Elm	9.5	0	Unilateral, Subordinate, Creek Bank Erosion	No
3857	American Elm	6.25	0	Subordinate, Creek Bank Erosion	No
3858	Colton Wood	42	0	Decay Column, Creek Bank Erosion	No
3859	Cedar Elm	6.5	0	Subordinate	No
3860	Green Ash	7.25	0	Creek Bank, Erosion	No
3861	Green Ash	7	7		Yes
3862	Green Ash	7	0	Creek Bank, Erosion	No
3863	Bois d'Arc	5.2	0	Not Protected	No
3864	Pecan	9.25	9.25		Yes
3865	Green Ash	7	7		Yes
3866	Hackberry	9	0	Not Protected	No
3867	Cedar Elm	10.5	0	Unilateral, Subordinate	No
3868	American Elm	11	11		Yes
3869	American Elm	13	0	Unilateral	No
3870	Pecan	6.25	0	Unilateral, Subordinate	No
3871	Pecan	7.75	7.75		Yes
3872	Pecan	8.5	0	Unilateral, Subordinate	No
3873	Cedar Elm	9.25	0	Unilateral, Subordinate	No
3874	American Elm	11.75	0	Subordinate	No
3875	Bois d'Arc	7.25	0	Not Protected	No
3876	Bois d'Arc	6.25	0	Not Protected	No
3877	American Elm	6	0	Unilateral, Subordinate	No
3878	China Berry	6.25	6.25		Yes
3879	Pecan	8.75	8.75		Yes
3880	Pecan	10	0	Dual Leader, Included Bark, Unilateral, Subordinate, Pic 267	No
3881	Cedar Elm	6.75	0	Subordinate	No
3882	American Elm	6.25	0	Subordinate	No
3883	Green Ash	6.5	0	Unilateral, Subordinate, Creek Bank	No
3884	Green Ash	6.5	0	Unilateral, Subordinate, Erosion, Creek Bank	No
3885	American Elm	9.75	0	Unilateral, Subordinate	No
3886	American Elm	7	0	Unilateral, Subordinate, Erosion, Falling In Creek	No
3887	American Elm	15.5	0	Unilateral, Subordinate	No
2606W	Green Ash	7.5	0	Unilateral, Dual Leader, In Power Lines	No
2939E	Green Ash	11	0	Stump	No
2939N	Green Ash	9	0	Stump	No
2939SE	Green Ash	12	0	Stump	No
2940NE	Green Ash	10	0	Stump	No

33 of 72

Easthaven Tree Survey
5/8/2013

Tree Tag #	Common Name	Total DBH	Mitigation Inches	Condition Notes/Pic #	Protected
2941N	Green Ash	14	0	Stump	No
2942S	Green Ash	9	0	Stump	No
2970E	Cedar Elm	11	0	Stump	No
2970N	Green Ash	8	0	Stump	No
3051B	Cedar Elm	9	0	Unilateral, Subordinate	No
3052B	Cedar Elm	11.75	0	Unilateral, Subordinate, Grade Raised, Pic 191	No
3053B	Cedar Elm	8	0	Unilateral Subordinate, Grade Raised, Pic 191	No
3054B	Cedar Elm	13.25	0	Unilateral, Subordinate, Grade raised, Pic 191	No
3055B	Bois d'Arc	25.5	0	Decay Column, Pic 186	No
3056B	Bois d'Arc	17	0	Included Bark, Decline, Pic 185	No
3057B	Cedar Elm	13.5	0	Unilateral, Subordinate	No
3058B	Cedar Elm	19	19		Yes
3059B	Bois d'Arc	20.75	0	Unilateral, Subordinate, Dual Leader, Included Bark, Pic183	No
3060B	Cedar Elm	16.25	0	Unilateral, Subordinate	No
3061B	Cedar Elm	16.25	0	Unilateral	No
3062B	Burr Oak	30.25	0	Decay Column, 184	No
3063B	Cedar Elm	18.75	18.75		Yes
3064B	Chittum	9	0	Subordinate	No
3065B	Bois d'Arc	12.25	0	Dual Leader, Included Bark, Pic 187	No
3066B	Cedar Elm	14	0	Unilateral	No
3066S	Cedar Elm	12.75	0	Broken, Pic 101	No
3067B	Cedar Elm	11.5	0	Unilateral, Subordinate	No
3068B	Cedar Elm	8.25	0	Unilateral, Subordinate	No
3069B	Hackberry	15.75	0	Unilateral, Subordinate	No
3070B	Bois d'Arc	17.25	0	Dual Leader, Included Bark, Pic 182	No
3071B	Hackberry	9.75	0	Not Protected	No
3072B	Cedar Elm	10	0	Unilateral, Subordinate	No
3073B	Hackberry	11	0	Unilateral, Subordinate	No
3074B	Hackberry	8.5	0	Not Protected	No
3075B	Cedar Elm	8	0	Unilateral, Subordinate	No
3076B	Cedar Elm	9.5	9.5		Yes
3077B	Bois d'Arc	11.25	11.25		Yes
3078B	Pecan	29	0	Grade Raised, Decay Column, Pic 192	No
3079B	Cedar Elm	16	0	Unilateral, Subordinate, Grade Raised, Pic 197	No
3080B	Hackberry	8	0	Not Protected	No
3081B	Green Ash	25	25		Yes
3082B	Bois d'Arc	8	0	Not Protected	No
3083B	Bois d'Arc	9	0	Not Protected	No

34 of 72

Easthaven Tree Survey
5/8/2013

Tree Tag #	Common Name	Total DBH	Mitigation Inches	Condition Notes/Pic #	Protected
3084B	Cedar Elm	6.5	0	Unilateral, Subordinate	No
3085B	Hackberry	8	0	Not Protected	No
3086B	Hackberry	7.25	0	Not Protected	No
3087B	Cedar Elm	7	7		Yes
3088B	Hackberry	8.5	0	Not Protected	No
3089B	Hackberry	6	0	Not Protected	No
3090B	Hackberry	9.25	0	Not Protected	No
3091B	Bois d'Arc	9.5	0	Not Protected	No
3092B	Green Ash	18.75	0	Unilateral, Decay, Pic 210	No
3093B	Green Ash	12.25	0	Dual Leader, Included Bark, Pic 223	No
3094B	Green Ash	6.75	0	Included Bark With Smaller Hackberry, Pic 225	No
3095B	Cedar Elm	7.75	7.75		Yes
3096B	Green Ash	7.25	0	Unilateral, Subordinate	No
3097B	Green Ash	9	9		Yes
3098B	Green Ash	9.25	0	Unilateral, Decay, Pic 224	No
3099B	Green Ash	7.25	7.25		Yes
3100B	Green Ash	9	9		Yes
3101B	Green Ash	8	0	Unilateral, Subordinate	No
3102B	American Elm	12.25	0	Unilateral	No
3103B	Hackberry	6	0	Not Protected	No
3104B	Hackberry	10.25	0	Basal Decay, Unilateral, Subordinate	No
3105B	Bois d'Arc	34.5	0	Dual Leader, Included Bark, Pic 234	No
3106B	Green Ash	10	0	Dual Leader, Included Bark, Unilateral	No
3107B	Bois d'Arc	30.75	0	Dual Leader, Included Bark, Decay, Pic 236	No
3108B	Bois d'Arc	39	0	Dual Leader, Split, Pic 251	No
3109B	Green Ash	9	9		Yes
3110B	Bois d'Arc	15	15		Yes
3111B	Hackberry	6.25	0	Not Protected	No
3112B	Green Ash	6.5	6.5		Yes
3113B	Hackberry	10	0	Dual Leader, Included Bark	No
3114B	Hackberry	6.5	0	Not Protected	No
3115B	China Berry	7	0	Bull Rot, Pic 252	No
3116B	Hackberry	8	0	Not Protected	No
3117B	Bois d'Arc	14.75	0	Unilateral, Subordinate, Included Bark, Decline	No
3118B	Bois d'Arc	27	0	Dual Leader, Included Bark	No
3119B	Bois d'Arc	10.5	0	Unilateral, Subordinate, Occlusion With 3120b	No
3120B	Hackberry	14.25	0	Basal Occlusion With Other Tree, Pic 262	No
3121B	Bois d'Arc	24	0	Dual Leader, Included Bark, Decay	No

35 of 72

Easthaven Tree Survey
5/8/2013

Tree Tag #	Common Name	Total DBH	Mitigation Inches	Condition Notes/Pic #	Protected
3122B	Hackberry	9.75	0	Not Protected	No
3125B	Green Ash	6	6		Yes
3126B	American Elm	9	0	Dual Leader, Included Bark	No
3127B	Pecan	8	0	Unilateral, Subordinate	No
3128B	Pecan	7	7		Yes
3129B	Pecan	6.25	6.25		Yes
3130B	Pecan	8	0	Unilateral, Subordinate	No
3131B	Pecan	6.75	6.75		Yes
3132B	American Elm	6	0	Unilateral, Subordinate	No
3133B	Pecan	6.5	0	Unilateral, Subordinate	No
3134B	Pecan	10	10		Yes
3135B	Pecan	8.5	8.5		Yes
3136B	pecan	9.75	9.75		Yes
3137B	Cedar Elm	6.5	6.5		Yes
3138B	American Elm	6.75	6.75		Yes
3139B	Pecan	6.25	0	Unilateral	No
3140B	Pecan	9.25	9.25		Yes
3141B	Pecan	6.75	6.75		Yes
3142B	Cedar Elm	8.25	8.25		Yes
3143B	Cedar Elm	8	8		Yes
3144B	Green Ash	8	0	Dual Leader, Included Bark	No
3145B	Bois d'Arc	39	0	Split, Pic 256	No
3146B	American Elm	12	12		Yes
3147B	Bois d'Arc	21.75	0	Dual Leader, Included Bark, Decline, Pic 241	No
3148B	Bois d'Arc	17.5	0	Dual Leader, Included Bark, Unilateral	No
3149B	Cedar Elm	14.5	14.5		Yes
3151B	Bois d'Arc	29.5	0	Dual Leader, Included Bark	No
3151S	Green Ash	13	0	Stump	No
3152B	Cedar Elm	7	0	Unilateral	No
3153B	Green Ash	7	0	Decay, Pic 228	No
3154B	Green Ash	16	0	Dual Leader, Included Bark, Decay, Pic 229	No
3155B	Green Ash	11	0	Dual Leader	No
3156B	Green Ash	6.75	0	Unilateral, Subordinate	No
3157B	Cedar Elm	6.75	0	Unilateral, Subordinate	No
3211E	Green Ash	10	10		Yes

36 of 72

Easthaven Tree Survey
5/8/2013

Health	Limits of disturbance
Structural Defects/Hazardous	IN
Healthy	IN
Structural Defects/Hazardous	IN
Structural Defects/Hazardous	IN
Healthy	IN
Structural Defects/Hazardous	IN
Structural Defects/Hazardous	IN
Structural Defects/Hazardous	IN
Structural Defects/Hazardous	IN
Structural Defects/Hazardous	IN
Structural Defects/Hazardous	IN
Declining	IN
Structural Defects/Hazardous	IN
Structural Defects/Hazardous	IN
Declining	IN
Structural Defects/Hazardous	IN
Declining	IN
Healthy	IN
Structural Defects/Hazardous	IN
Healthy	IN
Healthy	IN
Structural Defects/Hazardous	IN
Structural Defects/Hazardous	IN
Structural Defects/Hazardous	IN
Structural Defects/Hazardous	IN
Structural Defects/Hazardous	IN
Structural Defects/Hazardous	IN
Structural Defects/Hazardous	IN
Declining	IN
Structural Defects/Hazardous	IN
Healthy	IN
Structural Defects/Hazardous	IN
Structural Defects/Hazardous	IN
Healthy	IN
Healthy	IN
Healthy	IN
Structural Defects/Hazardous	IN
Too small	IN

41 of 72

Easthaven Tree Survey
5/8/2013

Health	Limits of disturbance
Healthy	IN
Too small	IN
Declining	IN
Structural Defects/Hazardous	IN
Structural Defects/Hazardous	IN
Structural Defects/Hazardous	IN
Structural Defects/Hazardous	IN
Structural Defects/Hazardous	IN
Structural Defects/Hazardous	IN
Structural Defects/Hazardous	IN
Declining	IN
Structural Defects/Hazardous	IN
Structural Defects/Hazardous	IN
Structural Defects/Hazardous	IN
Structural Defects/Hazardous	IN
Too small	IN
Declining	IN
Structural Defects/Hazardous	IN
Structural Defects/Hazardous	IN
Declining	IN
Declining	OUT
Declining	OUT
Declining	IN
Declining	IN
Too small	IN
Too small	IN
Too small	IN
Structural Defects/Hazardous	IN
Structural Defects/Hazardous	IN
Structural Defects/Hazardous	IN
Structural Defects/Hazardous	IN
Structural Defects/Hazardous	IN
Structural Defects/Hazardous	IN
Too small	IN
Structural Defects/Hazardous	IN
Too small	IN
Structural Defects/Hazardous	IN
Structural Defects/Hazardous	IN

42 of 72

Easthaven Tree Survey
5/8/2013

Health	Limits of disturbance
Too small	IN
Healthy	IN
Structural Defects/Hazardous	OUT
Structural Defects/Hazardous	IN
Structural Defects/Hazardous	IN
Structural Defects/Hazardous	IN
Structural Defects/Hazardous	IN
Structural Defects/Hazardous	IN
Structural Defects/Hazardous	IN
Structural Defects/Hazardous	IN
Declining	IN
Structural Defects/Hazardous	IN
Structural Defects/Hazardous	IN
Structural Defects/Hazardous	IN
Structural Defects/Hazardous	IN
Declining	IN
Healthy	IN
Too small	IN
Healthy	IN
Structural Defects/Hazardous	IN
Healthy	IN
Structural Defects/Hazardous	IN
Structural Defects/Hazardous	IN
Structural Defects/Hazardous	IN
Healthy	IN
Declining	IN
Declining	IN
Structural Defects/Hazardous	IN
Healthy	IN
Structural Defects/Hazardous	IN
Structural Defects/Hazardous	IN
Healthy	IN
Hazardous	IN
Hazardous	IN
Structural Defects/Hazardous	OUT
Structural Defects/Hazardous	IN
Structural Defects/Hazardous	OUT
Structural Defects/Hazardous	OUT

43 of 72

Easthaven Tree Survey
5/8/2013

Health	Limits of disturbance
Structural Defects/Hazardous	OUT
Healthy	OUT
Healthy	OUT
Declining	IN
Healthy	IN
Structural Defects/Hazardous	IN
Structural Defects/Hazardous	IN
Structural Defects/Hazardous	IN
Structural Defects/Hazardous	IN
Healthy	IN
Structural Defects/Hazardous	IN
Structural Defects/Hazardous	IN
Structural Defects/Hazardous	IN
Dead	IN
Structural Defects/Hazardous	IN
Structural Defects/Hazardous	IN
Healthy	IN
Healthy	IN
Structural Defects/Hazardous	IN
Structural Defects/Hazardous	OUT
Structural Defects/Hazardous	OUT
Structural Defects/Hazardous	OUT
Structural Defects/Hazardous	OUT
Structural Defects/Hazardous	OUT
Structural Defects/Hazardous	OUT
Healthy	OUT
Healthy	OUT
Declining	OUT
Structural Defects/Hazardous	OUT
Declining	OUT
Healthy	OUT
Structural Defects/Hazardous	IN
Structural Defects/Hazardous	IN
Structural Defects/Hazardous	IN
Healthy	IN
Healthy	IN
Structural Defects/Hazardous	IN
Structural Defects/Hazardous	IN

44 of 72

Easthaven Tree Survey
5/8/2013

Health	Limits of disturbance
Structural Defects/Hazardous	IN
Structural Defects/Hazardous	IN
Structural Defects/Hazardous	IN
Structural Defects/Hazardous	IN
Structural Defects/Hazardous	IN
Structural Defects/Hazardous	IN
Healthy	IN
Healthy	IN
Structural Defects/Hazardous	IN
Structural Defects/Hazardous	IN
Healthy	IN
Structural Defects/Hazardous	IN
Healthy	IN
Structural Defects/Hazardous	IN
Structural Defects/Hazardous	IN
Healthy	IN
Healthy	IN
Structural Defects/Hazardous	IN
Structural Defects/Hazardous	IN
Structural Defects/Hazardous	IN
Structural Defects/Hazardous	IN
Healthy	IN
Structural Defects/Hazardous	IN
Structural Defects/Hazardous	IN
Structural Defects/Hazardous	IN
Structural Defects/Hazardous	IN
Healthy	OUT
Structural Defects/Hazardous	OUT
Structural Defects/Hazardous	OUT
Structural Defects/Hazardous	OUT
Healthy	OUT
Structural Defects/Hazardous	IN
Healthy	IN
Healthy	IN
Structural Defects/Hazardous	IN
Structural Defects/Hazardous	IN
Structural Defects/Hazardous	IN
Structural Defects/Hazardous	IN

45 of 72

Easthaven Tree Survey
5/8/2013

Health	Limits of disturbance
Structural Defects/Hazardous	IN
Structural Defects/Hazardous	IN
Healthy	IN
Structural Defects/Hazardous	IN
Structural Defects/Hazardous	IN
Structural Defects/Hazardous	IN
Structural Defects/Hazardous	IN
Structural Defects/Hazardous	IN
Declining	IN
Structural Defects/Hazardous	IN
Structural Defects/Hazardous	IN
Healthy	IN
Structural Defects/Hazardous	IN
Structural Defects/Hazardous	OUT
Healthy	OUT
Healthy	OUT
Too Small	OUT
Healthy	OUT
Healthy	OUT
Declining	OUT
Declining	OUT
Declining	OUT
Healthy	IN
Structural Defects/Hazardous	IN
Healthy	IN
Structural Defects/Hazardous	IN
Structural Defects/Hazardous	IN
Structural Defects/Hazardous	IN
Structural Defects/Hazardous	IN
Structural Defects/Hazardous	IN
Healthy	OUT
Structural Defects/Hazardous	IN
Too small	OUT
Declining	OUT
Healthy	OUT
Structural Defects/Hazardous	OUT
Structural Defects/Hazardous	OUT
Structural Defects/Hazardous	OUT
Structural Defects/Hazardous	IN

46 of 72

Easthaven Tree Survey
5/8/2013

Health	Limits of disturbance
Structural Defects/Hazardous	IN
Structural Defects/Hazardous	IN
Structural Defects/Hazardous	IN
Structural Defects/Hazardous	IN
Healthy	IN
Structural Defects/Hazardous	IN
Structural Defects/Hazardous	IN
Structural Defects/Hazardous	IN
Healthy	IN
Structural Defects/Hazardous	IN
Structural Defects/Hazardous	IN
Structural Defects/Hazardous	IN
Structural Defects/Hazardous	IN
Declining	IN
Declining	IN
Structural Defects/Hazardous	IN
Structural Defects/Hazardous	IN
Healthy	IN
Structural Defects/Hazardous	IN
Structural Defects/Hazardous	IN
Structural Defects/Hazardous	IN
Structural Defects/Hazardous	IN
Structural Defects/Hazardous	IN
Structural Defects/Hazardous	IN
Healthy	IN
Structural Defects/Hazardous	IN
Healthy	IN
Structural Defects/Hazardous	IN
Healthy	IN
Healthy	IN
Too small	IN
Healthy	IN
Healthy	IN
Structural Defects/Hazardous	IN
Healthy	IN
Structural Defects/Hazardous	IN
Structural Defects/Hazardous	IN

47 of 72

Easthaven Tree Survey
5/8/2013

Health	Limits of disturbance
Structural Defects/Hazardous	IN
Structural Defects/Hazardous	IN
Healthy	IN
Structural Defects/Hazardous	IN
Structural Defects/Hazardous	IN
Structural Defects/Hazardous	IN
Structural Defects/Hazardous	IN
Structural Defects/Hazardous	IN
Structural Defects/Hazardous	IN
Structural Defects/Hazardous	IN
Structural Defects/Hazardous	IN
Structural Defects/Hazardous	IN
Structural Defects/Hazardous	IN
Structural Defects/Hazardous	IN
Structural Defects/Hazardous	IN
Structural Defects/Hazardous	IN
Structural Defects/Hazardous	IN
Structural Defects/Hazardous	IN
Structural Defects/Hazardous	IN
Structural Defects/Hazardous	IN
Structural Defects/Hazardous	IN
Structural Defects/Hazardous	IN
Structural Defects/Hazardous	IN
Structural Defects/Hazardous	IN
Structural Defects/Hazardous	IN
Structural Defects/Hazardous	OUT
Structural Defects/Hazardous	IN
Declining	OUT
Structural Defects/Hazardous	OUT
Structural Defects/Hazardous	OUT
Structural Defects/Hazardous	OUT
Structural Defects/Hazardous	IN
Structural Defects/Hazardous	IN
Structural Defects/Hazardous	IN
Declining	IN
Declining	IN
Structural Defects/Hazardous	IN
Declining	IN

48 of 72

Easthaven Tree Survey
5/8/2013

Health	Limits of disturbance
Declining	IN
Healthy	IN
Structural Defects/Hazardous	IN
Structural Defects/Hazardous	IN
Healthy	IN
Healthy	IN
Structural Defects/Hazardous	IN
Declining	IN
Structural Defects/Hazardous	IN
Declining	IN
Healthy	IN
Structural Defects/Hazardous	IN
Healthy	IN
Structural Defects/Hazardous	IN
Healthy	OUT
Structural Defects/Hazardous	OUT
Hazardous	IN
Structural Defects/Hazardous	OUT
Structural Defects/Hazardous	OUT
Structural Defects/Hazardous	IN
Structural Defects/Hazardous	OUT
Structural Defects/Hazardous	IN
Structural Defects/Hazardous	IN
Too small	IN
Too small	IN
Too small	OUT
Structural Defects/Hazardous	OUT
Structural Defects/Hazardous	OUT
Too small	OUT
Structural Defects/Hazardous	OUT
Structural Defects/Hazardous	OUT
Structural Defects/Hazardous	OUT
Too small	OUT
Too small	OUT
Healthy	OUT
Structural Defects/Hazardous	IN
Too small	IN
Structural Defects/Hazardous	IN

49 of 72

Easthaven Tree Survey
5/8/2013

Health	Limits of disturbance
Too small	IN
Structural Defects/Hazardous	IN
Healthy	IN
Too small	IN
Too small	IN
Too small	IN
Too small	IN
Too small	IN
Healthy	IN
Healthy	IN
Declining	IN
Structural Defects/Hazardous	OUT
Structural Defects/Hazardous	OUT
Healthy	OUT
Structural Defects/Hazardous	OUT
Structural Defects/Hazardous	OUT
Too small	IN
Structural Defects/Hazardous	OUT
Structural Defects/Hazardous	OUT
Structural Defects/Hazardous	IN
Too small	IN
Too small	IN
Too small	IN
Healthy	IN
Too small	IN
Too small	IN
Too small	IN
Too small	IN
Structural Defects/Hazardous	IN
Too small	IN
Too small	IN
Structural Defects/Hazardous	IN
Too small	IN
Too small	IN
Too Small	IN
Too small	IN
Structural Defects/Hazardous	IN
Too small	IN
Too small	IN
Too small	IN

50 of 72

Easthaven Tree Survey
5/8/2013

Health	Limits of disturbance
Structural Defects/Hazardous	IN
Too small	IN
Healthy	IN
Too small	IN
Structural Defects/Hazardous	OUT
Healthy	OUT
Structural Defects/Hazardous	IN
Structural Defects/Hazardous	IN
Healthy	IN
Structural Defects/Hazardous	IN
Structural Defects/Hazardous	IN
Healthy	IN
Healthy	IN
Healthy	IN
Structural Defects/Hazardous	IN
Structural Defects/Hazardous	IN
Structural Defects/Hazardous	IN
Declining	IN
Too small	IN
Too small	IN
Structural Defects/Hazardous	IN
Too small	IN
Too small	IN
Too small	IN
Healthy	IN
Too small	IN
Healthy	IN
Structural Defects/Hazardous	IN
Too small	IN
Too small	IN
Too small	IN
Structural Defects/Hazardous	IN
Structural Defects/Hazardous	IN
Too small	IN
Too small	IN
Healthy	IN
Structural Defects/Hazardous	IN
Too small	IN

51 of 72

Easthaven Tree Survey
5/8/2013

Health	Limits of disturbance
Structural Defects/Hazardous	IN
Too small	IN
Too small	IN
Too small	IN
Too small	IN
Too small	IN
Structural Defects/Hazardous	IN
Healthy	IN
Declining	IN
Structural Defects/Hazardous	IN
Structural Defects/Hazardous	IN
Structural Defects/Hazardous	IN
Declining	IN
Healthy	IN
Declining	IN
Structural Defects/Hazardous	IN
Structural Defects/Hazardous	IN
Structural Defects/Hazardous	IN
Structural Defects/Hazardous	IN
Structural Defects/Hazardous	IN
Healthy	IN
Healthy	IN
Healthy	IN
Structural Defects/Hazardous	IN
Structural Defects/Hazardous	IN
Healthy	IN
Structural Defects/Hazardous	IN
Structural Defects/Hazardous	IN
Healthy	IN
Structural Defects/Hazardous	IN
Structural Defects/Hazardous	IN
Too small	IN
Too small	IN
Structural Defects/Hazardous	IN
Too small	IN
Healthy	IN
Too small	IN

52 of 72

Easthaven Tree Survey
5/8/2013

Health	Limits of disturbance
Too small	IN
Structural Defects/Hazardous	IN
Too small	IN
Too small	IN
Structural Defects/Hazardous	IN
Structural Defects/Hazardous	IN
Structural Defects/Hazardous	IN
Structural Defects/Hazardous	IN
Structural Defects/Hazardous	IN
Too small	IN
Structural Defects/Hazardous	IN
Declining	IN
Structural Defects/Hazardous	IN
Healthy	IN
Healthy	IN
Too small	IN
Structural Defects/Hazardous	IN
Structural Defects/Hazardous	IN
Structural Defects/Hazardous	OUT
Structural Defects/Hazardous	OUT
Structural Defects/Hazardous	OUT
Structural Defects/Hazardous	IN
Neighbors Tree	IN
Neighbors Tree	OUT
Neighbors Tree	OUT
Neighbors Tree	OUT
Structural Defects/Hazardous	OUT
Too Small	OUT
Structural Defects/Hazardous	OUT
Too Small	OUT
Structural Defects/Hazardous	OUT
Structural Defects/Hazardous	OUT
Healthy	OUT
Structural Defects/Hazardous	OUT
Too Small	OUT
Healthy	OUT
Structural Defects/Hazardous	OUT
Too Small	OUT

53 of 72

Easthaven Tree Survey
5/8/2013

Health	Limits of disturbance
Healthy	IN
Too small	IN
Too small	IN
Too small	IN
Healthy	IN
Too small	IN
Too small	IN
Healthy	IN
Structural Defects/Hazardous	IN
Too small	IN
Too small	IN
Structural Defects/Hazardous	IN
Too small	IN
Structural Defects/Hazardous	IN
Structural Defects/Hazardous	IN
Too small	IN
Structural Defects/Hazardous	IN
Structural Defects/Hazardous	IN
Structural Defects/Hazardous	IN
Structural Defects/Hazardous	IN
Too small	IN
Structural Defects/Hazardous	IN
Structural Defects/Hazardous	IN
Structural Defects/Hazardous	IN
Too small	IN
Too small	IN
Too small	IN
Structural Defects/Hazardous	IN
Too small	IN
Too small	IN
Too small	IN
Too small	IN
Too small	IN
Too small	IN
Dead	IN
Too small	IN
Too small	IN
Too small	IN
Healthy	IN

54 of 72

Easthaven Tree Survey
5/8/2013

Health	Limits of disturbance
Too small	IN
Too small	IN
Too Small	IN
Too Small	IN
Too Small	IN
Too Small	IN
Too small	IN
Too Small	IN
Too Small	IN
Too Small	IN
Too small	IN
Too Small	IN
Structural Defects/Hazardous	IN
Structural Defects/Hazardous	IN
Too Small	IN
Structural Defects/Hazardous	IN
Healthy	IN
Too small	IN
Too small	IN
Too small	IN
Structural Defects/Hazardous	IN
Structural Defects/Hazardous	IN
Structural Defects/Hazardous	IN
Too small	IN
Structural Defects/Hazardous	IN
Healthy	IN
Structural Defects/Hazardous	IN
Structural Defects/Hazardous	IN
Structural Defects/Hazardous	IN
Structural Defects/Hazardous	IN
Structural Defects/Hazardous	IN
Structural Defects/Hazardous	IN
Healthy	IN
Healthy	IN
Structural Defects/Hazardous	IN
Healthy	IN
Structural Defects/Hazardous	IN
Structural Defects/Hazardous	IN

55 of 72

Easthaven Tree Survey
5/8/2013

Health	Limits of disturbance
Structural Defects/Hazardous	IN
Healthy	IN
Structural Defects/Hazardous	IN
Structural Defects/Hazardous	IN
Structural Defects/Hazardous	IN
Structural Defects/Hazardous	IN
Healthy	IN
Healthy	IN
Healthy	IN
Structural Defects/Hazardous	IN
Structural Defects/Hazardous	IN
Healthy	IN
Healthy	IN
Healthy	IN
Healthy	IN
Healthy	IN
Structural Defects/Hazardous	IN
Structural Defects/Hazardous	IN
Structural Defects/Hazardous	IN
Healthy	IN
Structural Defects/Hazardous	IN
Structural Defects/Hazardous	IN
Structural Defects/Hazardous	IN
Structural Defects/Hazardous	IN
Too small	IN
Healthy	IN
Healthy	IN
Healthy	IN
Healthy	IN
Structural Defects/Hazardous	IN
Structural Defects/Hazardous	IN
Healthy	IN

56 of 72

Easthaven Tree Survey
5/8/2013

Health	Limits of disturbance
Healthy	IN
Structural Defects/Hazardous	IN
Structural Defects/Hazardous	IN
Healthy	IN
Healthy	IN
Structural Defects/Hazardous	IN
Structural Defects/Hazardous	IN
Structural Defects/Hazardous	IN
Structural Defects/Hazardous	IN
Healthy	IN
Too small	IN
Declining	IN
Healthy	IN
Structural Defects/Hazardous	IN
Too small	IN
Structural Defects/Hazardous	IN
Healthy	IN
Structural Defects/Hazardous	IN
Healthy	IN
Too Small	IN
Too Small	IN
Declining	IN
Structural Defects/Hazardous	IN
Structural Defects/Hazardous	IN
Too small	IN
Structural Defects/Hazardous	IN
Structural Defects/Hazardous	IN
Structural Defects/Hazardous	IN
Structural Defects/Hazardous	IN
Too Small	IN
Too Small	IN
Too Small	IN
Structural Defects/Hazardous	IN
Too Small	IN
Too Small	IN
Structural Defects/Hazardous	IN
Too Small	IN
Too Small	IN
Structural Defects/Hazardous	IN
Too Small	IN
Declining	IN

57 of 72

Easthaven Tree Survey
5/8/2013

Health	Limits of disturbance
Too Small	IN
Healthy	IN
Too Small	IN
Structural Defects/Hazardous	IN
Too Small	IN
Dead	IN
Too small	IN
Healthy	IN
Too Small	IN
Too Small	IN
Too Small	OUT
Structural Defects/Hazardous	OUT
Too Small	OUT
Too Small	OUT
Too Small	OUT
Structural Defects/Hazardous	OUT
Too Small	OUT
Too Small	OUT
Too Small	OUT
Declining	OUT
Too Small	OUT
Structural Defects/Hazardous	OUT
Too Small	OUT
Too Small	IN
Too Small	IN
Too Small	IN
Too Small	IN
Too Small	IN
Healthy	IN
Too Small	IN
Healthy	OUT
Too Small	OUT
Too Small	OUT
Too Small	OUT
Too Small	OUT
Structural Defects/Hazardous	OUT
Too Small	OUT
Structural Defects/Hazardous	OUT

58 of 72

Easthaven Tree Survey
5/8/2013

Health	Limits of disturbance
Too Small	OUT
Structural Defects/Hazardous	OUT
Too Small	IN
Structural Defects/Hazardous	OUT
Structural Defects/Hazardous	IN
Structural Defects/Hazardous	OUT
Structural Defects/Hazardous	IN
Healthy	OUT
Structural Defects/Hazardous	OUT
Too Small	IN
Structural Defects/Hazardous	OUT
Too Small	IN
Too Small	IN
Too Small	IN
Structural Defects/Hazardous	IN
Too Small	IN
Too Small	IN
Too Small	IN
Too Small	IN
Structural Defects/Hazardous	IN
Structural Defects/Hazardous	IN
Structural Defects/Hazardous	IN
Too Small	IN
Too Small	OUT
Healthy	OUT
Too Small	IN
Too Small	OUT
Too Small	OUT
Structural Defects/Hazardous	OUT
Healthy	OUT
Structural Defects/Hazardous	OUT
Structural Defects/Hazardous	OUT
Structural Defects/Hazardous	OUT
Structural Defects/Hazardous	OUT
Too Small	OUT
Structural Defects/Hazardous	OUT
Too Small	OUT
Structural Defects/Hazardous	OUT

59 of 72

Easthaven Tree Survey
5/8/2013

Health	Limits of disturbance
Too Small	OUT
Too Small	OUT
Structural Defects/Hazardous	OUT
Too Small	OUT
Healthy	OUT
Too Small	OUT
Structural Defects/Hazardous	OUT
Structural Defects/Hazardous	OUT
Healthy	OUT
Too small	OUT
Too Small	OUT
Structural Defects/Hazardous	OUT
Healthy	OUT
Structural Defects/Hazardous	OUT
Structural Defects/Hazardous	OUT
Healthy	OUT
Too Small	OUT
Healthy	OUT
Healthy	OUT
Structural Defects/Hazardous	OUT
Structural Defects/Hazardous	OUT
Healthy	OUT
Too Small	OUT
Too Small	OUT
Too Small	OUT
Too Small	OUT
Too Small	OUT
Too Small	OUT
Too Small	OUT
Too Small	OUT
Too Small	OUT
Structural Defects/Hazardous	OUT
Healthy	OUT
Too Small	OUT
Too Small	OUT
Too Small	OUT
Structural Defects/Hazardous	OUT
Healthy	OUT
Structural Defects/Hazardous	OUT

60 of 72

Easthaven Tree Survey
5/8/2013

Health	Limits of disturbance
Too Small	OUT
Too Small	OUT
Structural Defects/Hazardous	OUT
Too Small	OUT
Too Small	OUT
Structural Defects/Hazardous	OUT
Too Small	OUT
Healthy	OUT
Structural Defects/Hazardous	IN
Structural Defects/Hazardous	IN
Structural Defects/Hazardous	IN
Healthy	IN
Healthy	OUT
Structural Defects/Hazardous	OUT
Healthy	OUT
Structural Defects/Hazardous	OUT
Structural Defects/Hazardous	OUT
Healthy	IN
Healthy	IN
Structural Defects/Hazardous	IN
Healthy	IN
Healthy	IN
Structural Defects/Hazardous	IN
Too small	IN
Structural Defects/Hazardous	IN
Structural Defects/Hazardous	IN
Too small	OUT
Healthy	IN
Too small	IN
Healthy	IN
Structural Defects/Hazardous	IN
Too small	IN
Healthy	IN
Healthy	IN
Healthy	OUT
Healthy	IN
Too small	IN
Structural Defects/Hazardous	IN

61 of 72

Easthaven Tree Survey
5/8/2013

Health	Limits of disturbance
Healthy	IN
Too small	IN
Too small	IN
Structural Defects/Hazardous	IN
Structural Defects/Hazardous	IN
Too small	IN
Too small	IN
Structural Defects/Hazardous	IN
Healthy	IN
Structural Defects/Hazardous	IN
Structural Defects/Hazardous	IN
Healthy	IN
Structural Defects/Hazardous	IN
Too small	IN
Too Small	IN
Healthy	IN
Healthy	IN
Healthy	IN
Healthy	IN
Healthy	IN
Healthy	IN
Healthy	IN
Structural Defects/Hazardous	IN
Healthy	IN
Healthy	IN
Structural Defects/Hazardous	IN
Healthy	IN
Healthy	IN
Structural Defects/Hazardous	IN
Too small	IN
Healthy	IN
Healthy	IN
Structural Defects/Hazardous	IN
Structural Defects/Hazardous	IN
Structural Defects/Hazardous	IN
Too small	IN
Healthy	IN
Too small	IN

62 of 72

Easthaven Tree Survey
5/8/2013

Health	Limits of disturbance
Structural Defects/Hazardous	IN
Structural Defects/Hazardous	IN
Too small	IN
Structural Defects/Hazardous	IN
Structural Defects/Hazardous	IN
Healthy	IN
Structural Defects/Hazardous	IN
Structural Defects/Hazardous	IN
Too small	IN
Structural Defects/Hazardous	IN
Healthy	IN
Structural Defects/Hazardous	IN
Healthy	IN
Healthy	IN
Healthy	IN
Structural Defects/Hazardous	IN
Structural Defects/Hazardous	IN
Structural Defects/Hazardous	IN
Healthy	IN
Structural Defects/Hazardous	IN
Healthy	IN
Healthy	IN
Structural Defects/Hazardous	IN
Structural Defects/Hazardous	IN
Structural Defects/Hazardous	IN
Structural Defects/Hazardous	IN
Too Small	IN
Healthy	IN
Healthy	IN
Structural Defects/Hazardous	OUT
Structural Defects/Hazardous	OUT
Structural Defects/Hazardous	IN
Structural Defects/Hazardous	IN
Healthy	IN
Structural Defects/Hazardous	IN
Structural Defects/Hazardous	IN
Healthy	IN
Structural Defects/Hazardous	IN

63 of 72

Easthaven Tree Survey
5/8/2013

Health	Limits of disturbance
Structural Defects/Hazardous	IN
Structural Defects/Hazardous	IN
Too Small	IN
Healthy	IN
Healthy	IN
Healthy	IN
Structural Defects/Hazardous	IN
Healthy	IN
Structural Defects/Hazardous	IN
Structural Defects/Hazardous	IN
Healthy	IN
Structural Defects/Hazardous	IN
Structural Defects/Hazardous	IN
Too Small	IN
Healthy	IN
Declining	IN
Structural Defects/Hazardous	IN
Declining	IN
Declining	IN
Healthy	IN
Healthy	IN
Structural Defects/Hazardous	IN
Structural Defects/Hazardous	OUT
Healthy	OUT
Structural Defects/Hazardous	OUT
Structural Defects/Hazardous	OUT
Structural Defects/Hazardous	OUT
Structural Defects/Hazardous	OUT
Structural Defects/Hazardous	OUT
Structural Defects/Hazardous	OUT
Structural Defects/Hazardous	OUT
Structural Defects/Hazardous	OUT
Structural Defects/Hazardous	OUT
Structural Defects/Hazardous	OUT
Healthy	OUT
Structural Defects/Hazardous	OUT
Healthy	OUT
Structural Defects/Hazardous	OUT
Structural Defects/Hazardous	OUT

64 of 72

Easthaven Tree Survey
5/8/2013

Health	Limits of disturbance
Healthy	OUT
Healthy	OUT
Healthy	OUT
Structural Defects/Hazardous	OUT
Structural Defects/Hazardous	OUT
Structural Defects/Hazardous	IN
Structural Defects/Hazardous	OUT
Healthy	IN
Healthy	IN
Structural Defects/Hazardous	IN
Structural Defects/Hazardous	IN
Structural Defects/Hazardous	IN
Structural Defects/Hazardous	IN
Structural Defects/Hazardous	IN
Structural Defects/Hazardous	IN
Healthy	IN
Structural Defects/Hazardous	IN
Structural Defects/Hazardous	IN
Healthy	IN
Healthy	IN
Structural Defects/Hazardous	IN
Too small	IN
Structural Defects/Hazardous	IN
Structural Defects/Hazardous	IN
Too small	IN
Healthy	IN
Structural Defects/Hazardous	IN
Healthy	IN
Healthy	IN
Healthy	IN
Structural Defects/Hazardous	IN
Healthy	IN
Healthy	IN
Structural Defects/Hazardous	IN
Healthy	OUT
Healthy	IN
Too small	OUT
Healthy	IN

65 of 72

Easthaven Tree Survey
5/8/2013

Health	Limits of disturbance
Too small	IN
Too small	IN
Too Small	IN
Healthy	OUT
Too Small	OUT
Healthy	OUT
Too Small	OUT
Too Small	OUT
Too Small	OUT
Healthy	OUT
Too Small	OUT
Too Small	OUT
Structural Defects/Hazardous	OUT
Healthy	OUT
Too Small	OUT
Healthy	OUT
Healthy	OUT
Healthy	OUT
Too Small	OUT
Healthy	OUT
Healthy	OUT
Structural Defects/Hazardous	OUT
Structural Defects/Hazardous	OUT
Structural Defects/Hazardous	OUT
Structural Defects/Hazardous	OUT
Too Small	OUT
Structural Defects/Hazardous	OUT
Healthy	OUT
Healthy	OUT
Healthy	OUT
Structural Defects/Hazardous	OUT
Healthy	OUT
Healthy	OUT
Healthy	OUT
Healthy	OUT
Structural Defects/Hazardous	OUT
Healthy	IN
Healthy	OUT

66 of 72

Easthaven Tree Survey
5/8/2013

Health	Limits of disturbance
Healthy	OUT
Structural Defects/Hazardous	OUT
Structural Defects/Hazardous	OUT
Structural Defects/Hazardous	OUT
Structural Defects/Hazardous	OUT
Too Small	OUT
Too Small	OUT
Healthy	OUT
Structural Defects/Hazardous	OUT
Structural Defects/Hazardous	OUT
Declining	OUT
Structural Defects/Hazardous	OUT
Structural Defects/Hazardous	OUT
Structural Defects/Hazardous	OUT
Structural Defects/Hazardous	OUT
Healthy	OUT
Healthy	OUT
Too Small	OUT
Healthy	OUT
Structural Defects/Hazardous	OUT
Structural Defects/Hazardous	OUT
Structural Defects/Hazardous	OUT
Healthy	OUT
Healthy	OUT
Healthy	OUT
Healthy	OUT
Healthy	OUT
Healthy	OUT
Dead	OUT
Dead	OUT
Healthy	OUT
Structural Defects/Hazardous	OUT
Structural Defects/Hazardous	OUT
Structural Defects/Hazardous	OUT
Structural Defects/Hazardous	OUT
Structural Defects/Hazardous	OUT
Healthy	OUT
Structural Defects/Hazardous	OUT

67 of 72

Easthaven Tree Survey
5/8/2013

Health	Limits of disturbance
Structural Defects/Hazardous	OUT
Structural Defects/Hazardous	OUT
Healthy	OUT
Structural Defects/Hazardous	OUT
Healthy	OUT
Structural Defects/Hazardous	OUT
Healthy	OUT
Healthy	OUT
Healthy	IN
Healthy	OUT
Structural Defects/Hazardous	OUT
Healthy	OUT
Healthy	OUT
Healthy	OUT
Too Small	OUT
Structural Defects/Hazardous	OUT
Healthy	OUT
Healthy	OUT
Healthy	OUT
Structural Defects/Hazardous	OUT
Healthy	OUT
Healthy	OUT
Healthy	OUT
Healthy	OUT
Healthy	OUT
Healthy	OUT
Healthy	OUT
Healthy	OUT
Healthy	OUT
Healthy	OUT
Healthy	OUT
Structural Defects/Hazardous	OUT
Structural Defects/Hazardous	OUT
Structural Defects/Hazardous	OUT
Structural Defects/Hazardous	OUT
Structural Defects/Hazardous	OUT
Structural Defects/Hazardous	OUT

68 of 72

Easthaven Tree Survey
5/8/2013

Health	Limits of disturbance
Structural Defects/Hazardous	OUT
Structural Defects/Hazardous	OUT
Structural Defects/Hazardous	OUT
Structural Defects/Hazardous	OUT
Structural Defects/Hazardous	OUT
Structural Defects/Hazardous	OUT
Healthy	OUT
Structural Defects/Hazardous	OUT
Too Small	OUT
Healthy	OUT
Healthy	OUT
Too Small	OUT
Structural Defects/Hazardous	OUT
Healthy	OUT
Structural Defects/Hazardous	OUT
Structural Defects/Hazardous	OUT
Healthy	OUT
Structural Defects/Hazardous	OUT
Structural Defects/Hazardous	OUT
Structural Defects/Hazardous	OUT
Too Small	OUT
Too Small	OUT
Structural Defects/Hazardous	OUT
Healthy	OUT
Healthy	OUT
Structural Defects/Hazardous	OUT
Structural Defects/Hazardous	OUT
Structural Defects/Hazardous	OUT
Structural Defects/Hazardous	OUT
Structural Defects/Hazardous	OUT
Structural Defects/Hazardous	OUT
Structural Defects/Hazardous	OUT
Structural Defects/Hazardous	OUT
Structural Defects/Hazardous	IN
Dead	IN
Dead	IN
Dead	IN
Dead	OUT

69 of 72

Easthaven Tree Survey
5/8/2013

Health	Limits of disturbance
Dead	OUT
Dead	OUT
Dead	OUT
Dead	OUT
Structural Defects/Hazardous	IN
Structural Defects/Hazardous	IN
Structural Defects/Hazardous	IN
Structural Defects/Hazardous	IN
Structural Defects/Hazardous	IN
Structural Defects/Hazardous	IN
Structural Defects/Hazardous	IN
Healthy	IN
Structural Defects/Hazardous	IN
Structural Defects/Hazardous	IN
Structural Defects/Hazardous	IN
Structural Defects/Hazardous	IN
Healthy	IN
Structural Defects/Hazardous	IN
Structural Defects/Hazardous	IN
Structural Defects/Hazardous	IN
Dead	IN
Structural Defects/Hazardous	IN
Structural Defects/Hazardous	IN
Structural Defects/Hazardous	IN
Structural Defects/Hazardous	IN
Too small	IN
Structural Defects/Hazardous	IN
Structural Defects/Hazardous	IN
Too small	IN
Structural Defects/Hazardous	IN
Healthy	IN
Healthy	IN
Structural Defects/Hazardous	IN
Structural Defects/Hazardous	IN
Too Small	IN
Healthy	IN
Too small	IN
Too small	IN

70 of 72

Easthaven Tree Survey
5/8/2013

Health	Limits of disturbance
Structural Defects/Hazardous	IN
Too small	IN
Too small	IN
Healthy	IN
Too small	IN
Too small	IN
Too small	IN
Too Small	IN
Structural Defects/Hazardous	IN
Structural Defects/Hazardous	IN
Structural Defects/Hazardous	IN
Healthy	IN
Structural Defects/Hazardous	IN
Healthy	IN
Structural Defects/Hazardous	IN
Healthy	IN
Healthy	IN
Structural Defects/Hazardous	IN
Structural Defects/Hazardous	IN
Too small	IN
Structural Defects/Hazardous	IN
Structural Defects/Hazardous	IN
Structural Defects/Hazardous	IN
Structural Defects/Hazardous	IN
Structural Defects/Hazardous	IN
Healthy	IN
Healthy	IN
Too Small	IN
Healthy	IN
Structural Defects/Hazardous	IN
Too Small	IN
Structural Defects/Hazardous	IN
Too Small	IN
Structural Defects/Hazardous	IN
Structural Defects/Hazardous	IN
Structural Defects/Hazardous	IN
Structural Defects/Hazardous	IN
Structural Defects/Hazardous	IN

71 of 72

Easthaven Tree Survey
5/8/2013

Health	Limits of disturbance
Too Small	IN
Healthy	OUT
Structural Defects/Hazardous	OUT
Structural Defects/Hazardous	OUT
Healthy	OUT
Healthy	OUT
Structural Defects/Hazardous	OUT
Healthy	OUT
Structural Defects/Hazardous	OUT
Structural Defects/Hazardous	OUT
Healthy	OUT
Healthy	OUT
Healthy	IN
Healthy	OUT
Healthy	OUT
Structural Defects/Hazardous	OUT
Healthy	IN
Healthy	IN
Healthy	IN
Healthy	IN
Structural Defects/Hazardous	IN
Structural Defects/Hazardous	IN
Healthy	IN
Structural Defects/Hazardous	IN
Structural Defects/Hazardous	IN
Healthy	IN
Structural Defects/Hazardous	IN
Dead	IN
Structural Defects/Hazardous	IN
Structural Defects/Hazardous	IN
Structural Defects/Hazardous	IN
Structural Defects/Hazardous	IN
Structural Defects/Hazardous	IN
Structural Defects/Hazardous	IN
Healthy	IN

72 of 72