

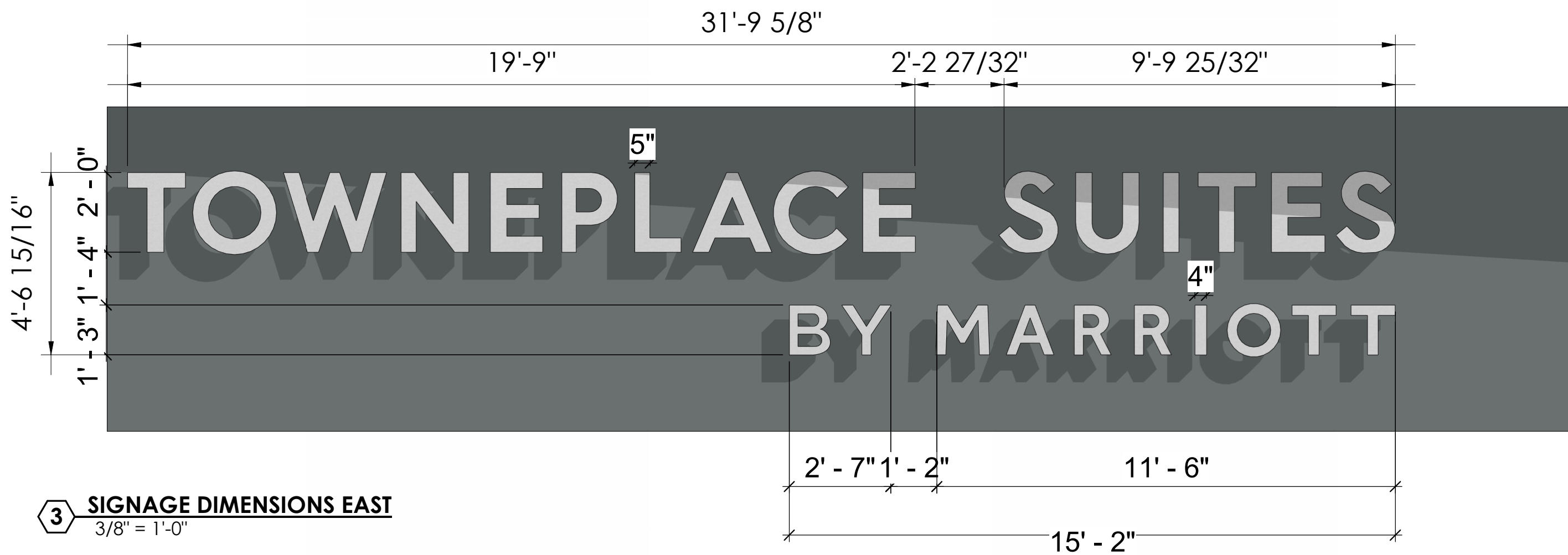


1 NORTH ELEVATION  
1/8" = 1'-0"

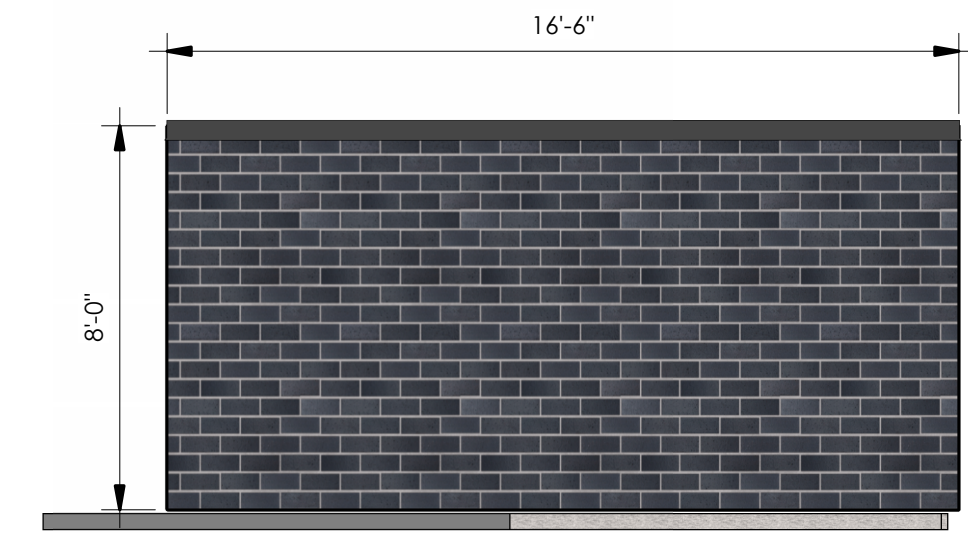


2 WEST ELEVATION  
1/8" = 1'-0"

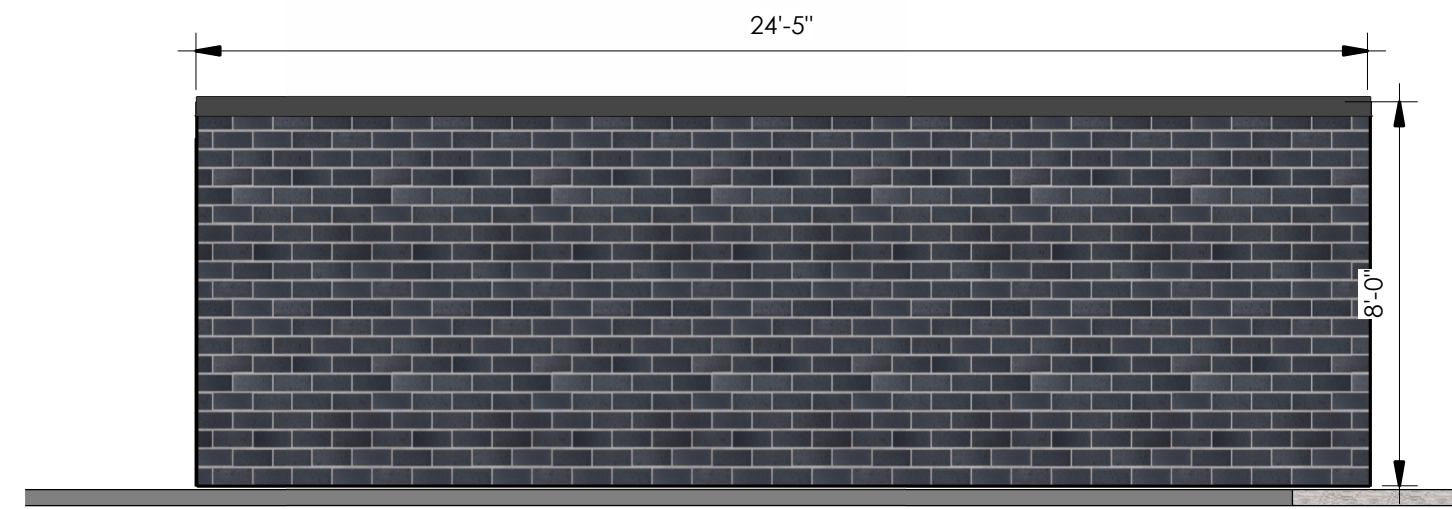
MATERIAL CALLOUTS		ADDITIONAL NOTES:	ELEVATION PRECENTAGES
BR-1	ACME BRICK - "MANGANESE IRONSPOT"	<ul style="list-style-type: none"><li>ALL SIGNAGE SUBJECT TO BUILDING INSPECTION DEPARTMENT APPROVAL</li><li>MECHANICAL UNITS SHALL BE SCREENED IN ACCORDANCE WITH LOCAL CITY AND ZONING ORDINANCES.</li><li>UTILITY BOXES AND CONDUIT SHALL BE PAINTED TO MATCH BUILDING COLOR</li><li>ROMAN SIZE, FACE BRICK, WITH 3/8" CONCAVE GROUT JOINT- MORTAR TO BE MATCHED TO GROUT</li><li>CONTRACTOR TO ENSURE METAL PANELS ARE INSTALLED IN ACCORDANCE WITH MANUFACTURERS RECOMMENDATION.</li><li>SIGN DESIGNED AND FABRICATED BY APPROVED VENDOR TO MEET BRAND STANDARDS, FOR LOCATION ONLY</li><li>ALL UTILITY BOXES AND METERS SHALL BE PAINTED TO MATCH SURROUNDING BUILDING FACADE</li><li>FINAL SIGN DESIGN TO BE DRAFTER BY THIRD PARTY CONTRACTOR TO ENSURE FINAL SIGN PACKAGE IS SUBMITTED APPROVED BY THE BRAND</li></ul>	<b>WEST ELEVATION</b> OVERALL - 15,050 TOTAL SQ. FT. 2,045 SQ. FT. - GLAZING 13,005 SQ. FT. - MASONRY MATERIALS <ul style="list-style-type: none"><li>STUCCO</li><li>BRICK</li></ul> 0 SQ. FT. - NICHIA FIBER BOARD SIGNAGE - 85 SF
SU-1	STUCCO - "BENJAMIN MOORE WHITE DOVE"		<b>NORTH ELEVATION</b> OVERALL - 8,881 TOTAL SQ. FT. 1,011 SQ. FT. - GLAZING 7,870 SQ. FT. - MASONRY MATERIALS <ul style="list-style-type: none"><li>STUCCO</li><li>BRICK</li></ul> 173 SQ. FT. - NICHIA FIBER BOARD
SU-2	STUCCO - "BENJAMIN MOORE GUNMETAL 1602"		<b>SOUTH ELEVATION</b> OVERALL - 9,054 TOTAL SQ. FT. 1,487 SQ. FT. - GLAZING 7,567 SQ. FT. - MASONRY MATERIALS <ul style="list-style-type: none"><li>STUCCO</li><li>BRICK</li></ul> 446 SQ. FT. - NICHIA FIBER BOARD SIGNAGE - 85SF
AP-1	NICHIA FIBER BOARD - "IVORY"		
GL	EXTERIOR WINDOWS: STOREFRONT WINDOW SYSTEM		
SF	STOREFRONT - BLACK ANODIZED		
AF	ALUMINUM PARAPET FLASHING TO MATCH STOREFRONT		



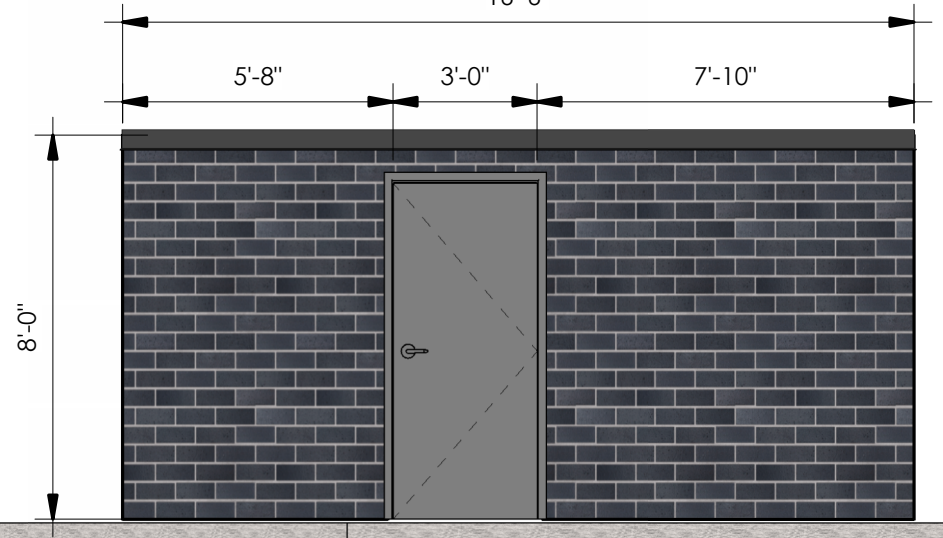
3 SIGNAGE DIMENSIONS EAST  
3/8" = 1'-0"



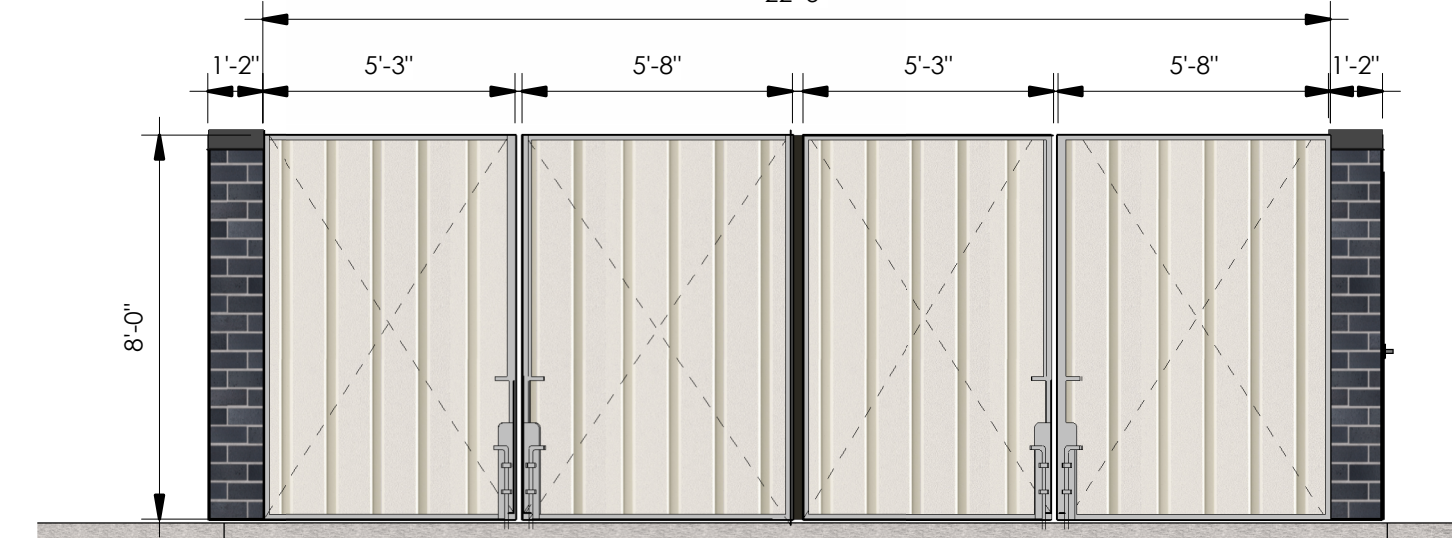
5 DUMPSTER SIDE ELEVATION  
1/4" = 1'-0"



6 DUMPSTER BACK ELEVATIONS  
1/4" = 1'-0"



7 DUMPSTER DOOR ELEVATION  
1/4" = 1'-0"



4 DUMPSTER GATE ELEVATION  
1/4" = 1'-0"



**TYPE-SIX**  
DEVELOPMENT SERVICES, LLC  
910 SOUTH MAIN STREET #150  
GRAPEVINE, TEXAS 76054  
972.677.9075

**TOWNEPLACE SUITES COPPELL**  
**SWH COPPELL, LLC**  
EAST DIVIDEND DR  
COPPELL, TX 75019  
PROJECT # 25009

ARCHITECT
D. HAYES HINKLE
ISSUE DATE
19 MAY 2025
ISSUED FOR
PERMIT

#	Revision	Date

SHEET NAME
BUILDING ELEVATIONS
SHEET NUMBER
A5.01

THIS DOCUMENT IS INCOMPLETE AND MAY NOT BE USED FOR REGULATORY APPROVAL, PERMIT, OR CONSTRUCTION.

D. HAYES HINKLE - 26067

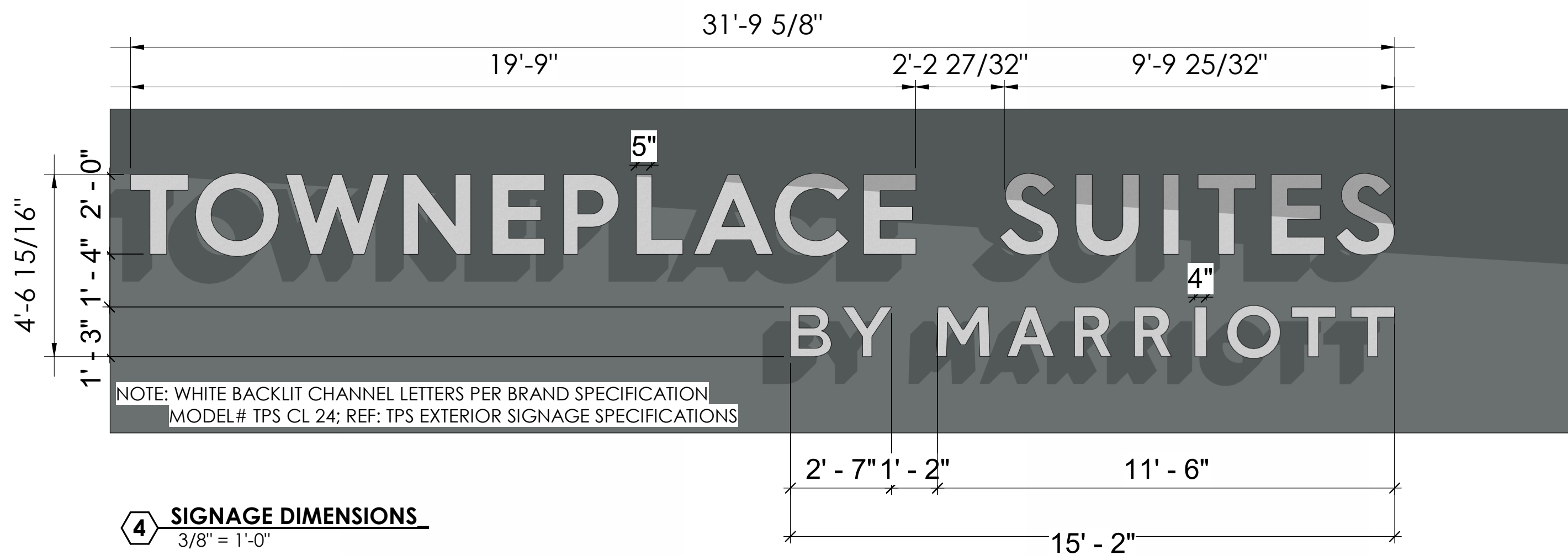
7/19/2025 10:27:11 AM





2 SOUTH ELEVATION  
1/8" = 1'-0"

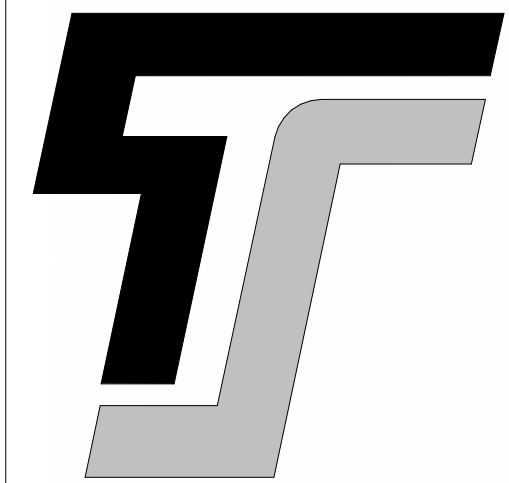
MATERIAL CALLOUTS		ADDITIONAL NOTES:	ELEVATION PRECENTAGES	
BR-1	ACME BRICK- "MANGANESE IRONSPOT"	<ul style="list-style-type: none"><li>ALL SIGNAGE SUBJECT TO BUILDING INSPECTION DEPARTMENT APPROVAL.</li><li>MECHANICAL UNITS SHALL BE SCREENED IN ACCORDANCE WITH LOCAL CITY AND ZONING ORDINANCES.</li><li>UTILITY BOXES AND CONDUIT SHALL BE PAINTED TO MATCH BUILDING COLOR</li><li>ROMAN SIZE, FACE BRICK, WITH 3/8" CONCAVE GROUT JOINT- MORTAR TO BE MATCHED TO GROUT</li><li>CONTRACTOR TO ENSURE METAL PANELS ARE INSTALLED IN ACCORDANCE WITH MANUFACTURERS RECOMMENDATION.</li><li>SIGN DESIGNED AND FABRICATED BY APPROVED VENDOR TO MEET BRAND STANDARDS, FOR LOCATION ONLY</li><li>ALL UTILITY BOXES AND METERS SHALL BE PAINTED TO MATCH SURROUNDING BUILDING FACADE.</li><li>FINAL SIGN DESIGN TO BE DRAFTER BY THIRD PARTY CONTRACTOR TO ENSURE FINAL SIGN PACKAGE IS SUBMITTED APPROVED BY THE BRAND</li></ul>	<b>WEST ELEVATION</b> OVERALL - 15,050 TOTAL SQ. FT. 2,045 SQ. FT. - GLAZING 13,005 SQ. FT. - MASONRY MATERIALS <ul style="list-style-type: none"><li>STUCCO</li><li>BRICK</li></ul> 0 SQ. FT. - NICHIA FIBER BOARD SIGNAGE - 85 SF	<b>NORTH ELEVATION</b> OVERALL - 8,881 TOTAL SQ. FT. 1,011 SQ. FT. - GLAZING 7,870 SQ. FT. - MASONRY MATERIALS <ul style="list-style-type: none"><li>STUCCO</li><li>BRICK</li></ul> 173 SQ. FT. - NICHIA FIBER BOARD
SU-1	STUCCO - "BENJAMIN MOORE WHITE DOVE"		<b>EAST ELEVATION</b> OVERALL - 15,551 TOTAL SQ. FT. 2,909 SQ. FT. - GLAZING 11,272 SQ. FT. - MASONRY MATERIALS <ul style="list-style-type: none"><li>STUCCO</li><li>BRICK</li></ul> 2,909 SQ. FT. - NICHIA FIBER BOARD SIGNAGE - 85 SF	<b>SOUTH ELEVATION</b> OVERALL - 9,054 TOTAL SQ. FT. 1,487 SQ. FT. - GLAZING 7,121 SQ. FT. - MASONRY MATERIALS <ul style="list-style-type: none"><li>STUCCO</li><li>BRICK</li></ul> 446 SQ. FT. - NICHIA FIBER BOARD SIGNAGE - 85SF
SU-2	STUCCO - "BENJAMIN MOORE GUNMETAL 1602"			
AP-1	NICHIA FIBER BOARD- "IVORY"			
GL	EXTERIOR WINDOWS: STOREFRONT WINDOW SYSTEM			
SF	STOREFRONT - BLACK ANODIZED			
AF	ALUMINUM PARAPET FLASHING TO MATCH STOREFRONT			



4 SIGNAGE DIMENSIONS  
3/8" = 1'-0"



1 EAST ELEVATION  
1/8" = 1'-0"



TYPE-SIX  
DEVELOPMENT SERVICES, LLC  
910 SOUTH MAIN STREET #150  
GRAPEVINE, TEXAS 76054  
972.677.9075

TOWNEPLACE SUITES COPPELL  
SWH COPPELL, LLC  
EAST DIVIDEND DR  
COPPELL, TX 75019

PROJECT # 25009

ARCHITECT
D. HAYES HINKLE
ISSUE DATE
19 MAY 2025
ISSUED FOR
PERMIT

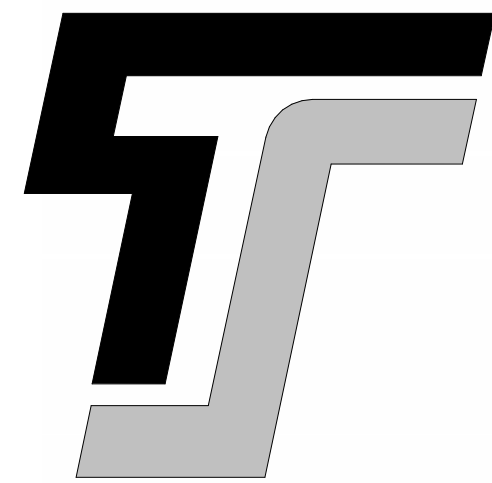
#	Revision	Date

SHEET NAME  
BUILDING ELEVATIONS

SHEET NUMBER  
A5.02

THIS DOCUMENT IS  
INCOMPLETE AND MAY  
NOT BE USED FOR  
REGULATORY APPROVAL,  
PERMIT, OR  
CONSTRUCTION.  
D. HAYES HINKLE - 26067  
7/18/2025 10:27:19 AM





TYPE-SIX

TYPE-SIX  
DEVELOPMENT SERVICES, LLC  
910 SOUTH MAIN STREET #150  
GRAPEVINE, TEXAS 76054  
972.677.9075

TOWNEPLACE SUITES COPPELL  
SWH COPPELL, LLC  
EAST DIVIDEND DR  
COPPELL, TX 75019

PROJECT # 25009

ARCHITECT

D. HAYES HINKLE

ISSUE DATE

19 MAY 2025

ISSUED FOR

PERMIT

#	Revision	Date

SHEET NAME

MATERIAL BOARD

SHEET NUMBER

A18.00

THIS DOCUMENT IS  
INCOMPLETE AND MAY  
NOT BE USED FOR  
REGULATORY APPROVAL,  
PERMIT, OR  
CONSTRUCTION.

D. HAYES HINKLE - 26067

7/18/2025 10:27:15 AM



2 EAST ELEVATION

1/8" = 1'-0"

ENDICOTT  
MANGANESE IRONSPOT  
BR-1

NICHIA FIBER BOARD  
IVORY  
AP-1

Gunmetal

1602

BENJAMIN MOORE  
SU-2

White Dove  
OC-17

BENJAMIN MOORE  
SU-1

BLACK ANODIZED ALUMINUM  
AF/SF

MATERIAL CALLOUTS		ADDITIONAL NOTES:	ELEVATION PRECENTAGES	
BR-1	ACME BRICK-"MANGANESE IRONSPOT"	<ul style="list-style-type: none"><li>ALL SIGNAGE SUBJECT TO BUILDING INSPECTION DEPARTMENT APPROVAL.</li><li>MECHANICAL UNITS SHALL BE SCREENED IN ACCORDANCE WITH LOCAL CITY AND ZONING ORDINANCES.</li><li>UTILITY BOXES AND CONDUIT SHALL BE PAINTED TO MATCH BUILDING COLOR.</li><li>ROMAN SIZE, FACE BRICK, WITH 3/8" CONCAVE GROUT JOINT- MORTAR TO BE MATCHED TO GROUT.</li><li>CONTRACTOR TO ENSURE METAL PANELS ARE INSTALLED IN ACCORDANCE WITH MANUFACTURERS RECOMMENDATION.</li><li>SIGN DESIGNED AND FABRICATED BY APPROVED VENDOR TO MEET BRAND STANDARDS, FOR LOCATION ONLY.</li><li>ALL UTILITY BOXES AND METERS SHALL BE PAINTED TO MATCH SURROUNDING BUILDING FACADE.</li><li>FINAL SIGN DESIGN TO BE DRAFTER BY THIRD PARTY CONTRACTOR TO ENSURE FINAL SIGN PACKAGE IS SUBMITTED APPROVED BY THE BRAND.</li></ul>	<b>WEST ELEVATION</b> OVERALL - 15,050 TOTAL SQ. FT. 2,045 SQ. FT. - GLAZING 13,005 SQ. FT. - MASONRY MATERIALS <ul style="list-style-type: none"><li>STUCCO</li><li>BRICK</li></ul> 0 SQ. FT. - NICHIA FIBER BOARD SIGNAGE - 85 SF	<b>NORTH ELEVATION</b> OVERALL - 8,881 TOTAL SQ. FT. 1,011 SQ. FT. - GLAZING 7,870 SQ. FT. - MASONRY MATERIALS <ul style="list-style-type: none"><li>STUCCO</li><li>BRICK</li></ul> 173 SQ. FT. - NICHIA FIBER BOARD SIGNAGE - 85 SF
SU-1	STUCCO - "BENJAMIN MOORE WHITE DOVE"		<b>EAST ELEVATION</b> OVERALL - 13,551 TOTAL SQ. FT. 2,909 SQ. FT. - GLAZING 11,272 SQ. FT. - MASONRY MATERIALS <ul style="list-style-type: none"><li>STUCCO</li><li>BRICK</li></ul> 2,909 SQ. FT. - NICHIA FIBER BOARD SIGNAGE - 85 SF	<b>SOUTH ELEVATION</b> OVERALL - 9,054 TOTAL SQ. FT. 1,487 SQ. FT. - GLAZING 7,121 SQ. FT. - MASONRY MATERIALS <ul style="list-style-type: none"><li>STUCCO</li><li>BRICK</li></ul> 446 SQ. FT. - NICHIA FIBER BOARD SIGNAGE - 85SF
SU-2	STUCCO - "BENJAMIN MOORE GUNMETAL 1602"			
AP-1	NICHIA FIBER BOARD-"IVORY"			
GL	EXTERIOR WINDOWS: STOREFRONT WINDOW SYSTEM			
SF	STOREFRONT - BLACK ANODIZED			
AF	ALUMINUM PARAPET FLASHING TO MATCH STOREFRONT			