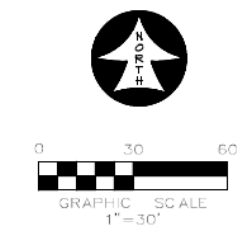


MATCHLINE SEE SHEET L3

RAMSEY LANDSCAPE ARCHITECTS, LLC  
11914 WISHING WELL CT.  
FRISCO, TEXAS 75035  
PHONE (972) 335-0889  
FAX (469) 362-5433  
EMAIL: MIKE.RLA@ATT.NET



**CORGAN**

CORGAN  
401 N. Houston St.  
Dallas, TX 75202  
T: 214-748-2000

**ISSUES**

1	02/13/2024	ISSUE FOR CONSTRUCTION
2		
3		
4		
5		
6		

**REVISIONS**

1	03/07/2024	PERMIT REVIEW
2		
3		
4		
5		
6		



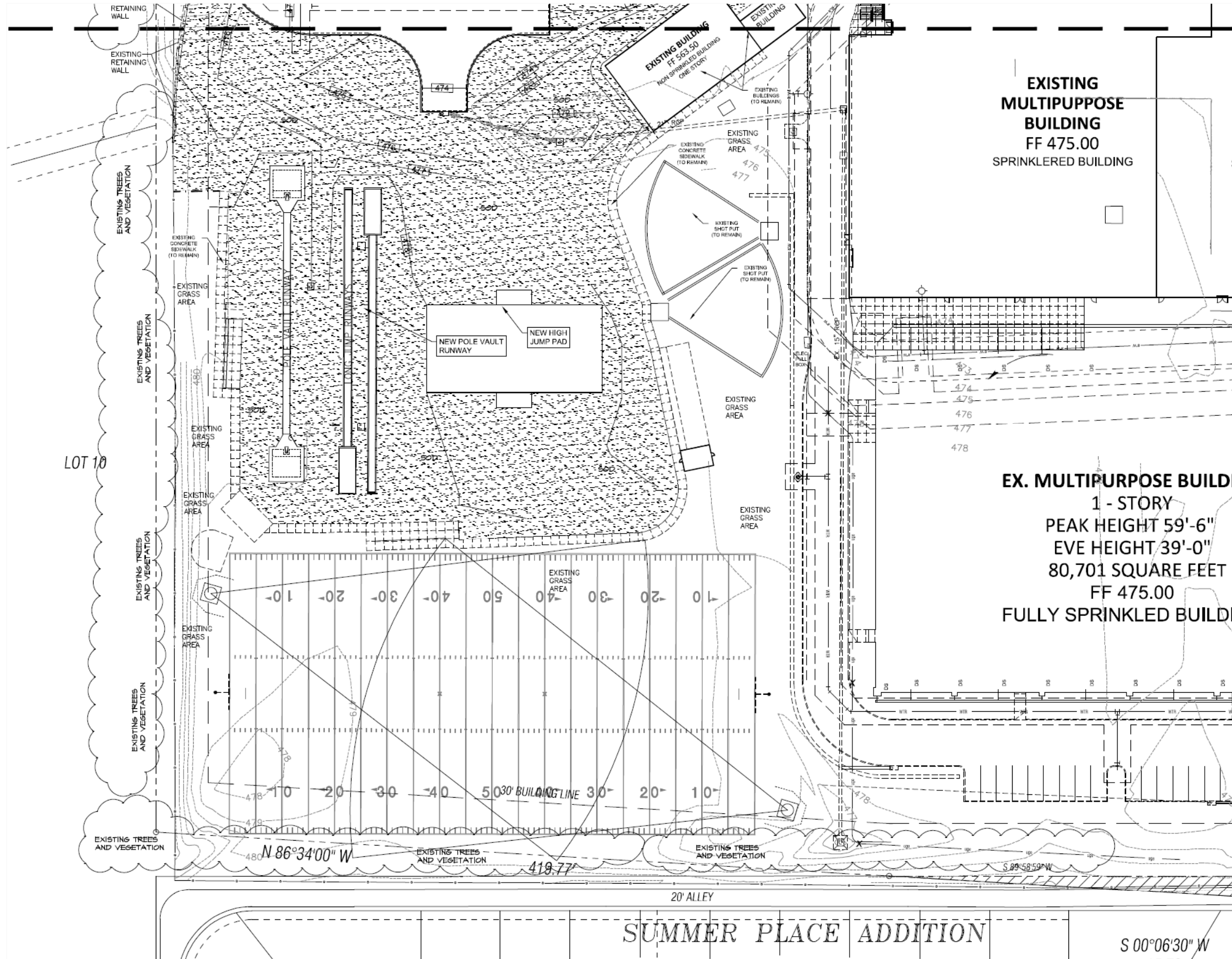
Date of issue:  
03/07/2024

**CHS NEW FINE ARTS REHEARSAL  
BUILDING & TENNIS CENTER  
EXPANSION**  
for  
Coppell Independent School District  
185 W Parkway Blvd., Coppell, TX 75019

LANDSCAPE PLAN  
AREA A

JOB 23280.0000  
DATE 02/13/2024  
SHEET

L 2



ISSUES	
1	02/13/2024 ISSUE FOR CONSTRUCTION
2	
3	
4	
5	
6	

REVISIONS	
03/07/2024	PERMIT REVIEW



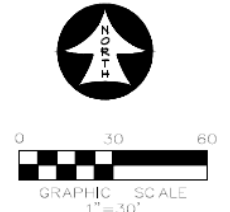
Date of issue:  
03/07/2024

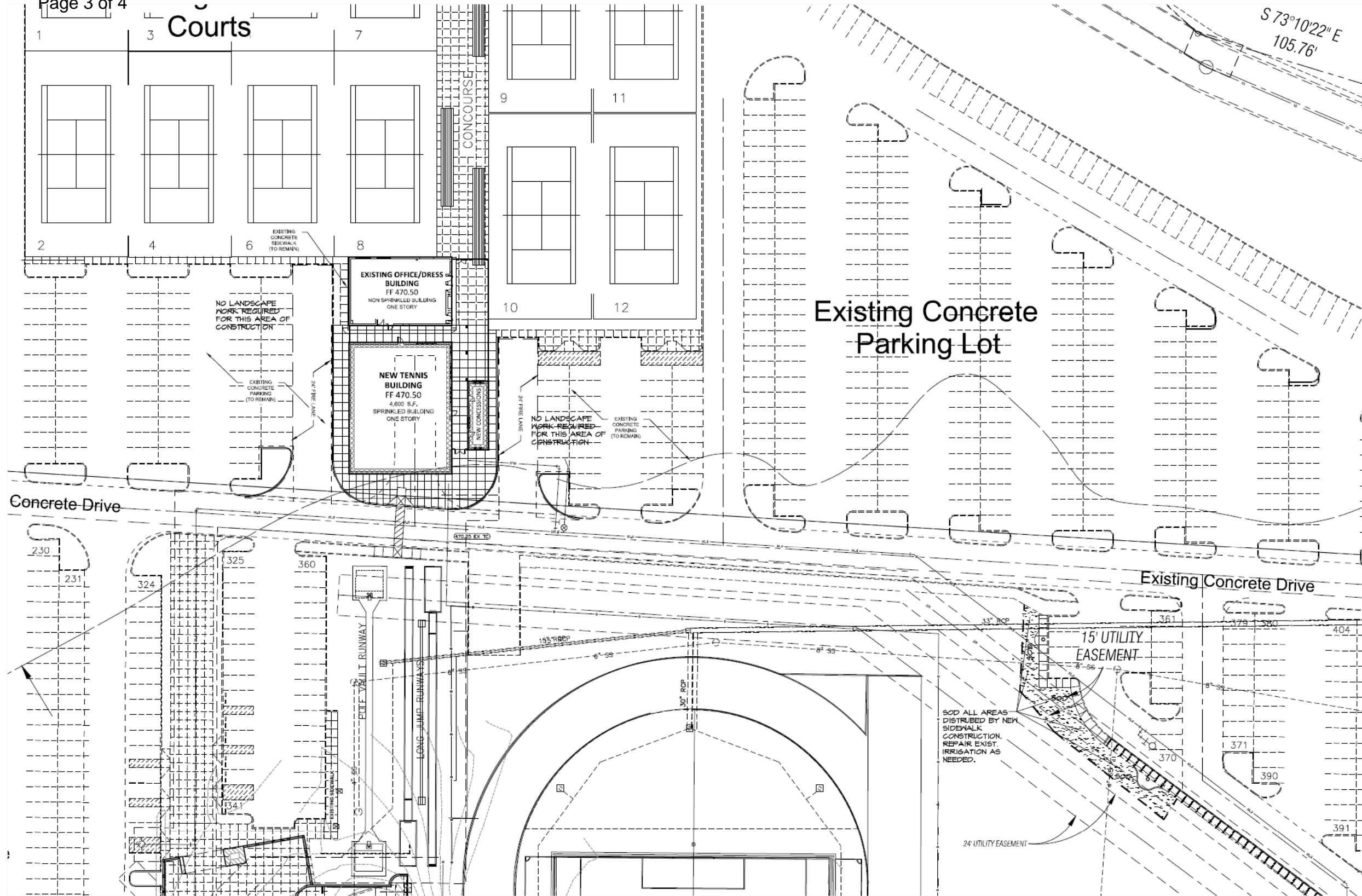
**CHS NEW FINE ARTS REHEARSAL BUILDING & TENNIS CENTER EXPANSION**  
for  
Coppell Independent School District  
185 W Parkway Blvd., Coppell, TX 75019

LANDSCAPE PLAN  
AREA B

JOB 23280.0000  
DATE 02/13/2024  
SHEET

RAMSEY LANDSCAPE ARCHITECTS, LLC  
11914 WISHING WELL CT.  
FRISCO, TEXAS 75035  
PHONE (972) 335-0889  
FAX (469) 352-5433  
EMAIL: MIKE.RLA@ATT.NET





ISSUES	
1	02/13/2024 ISSUE FOR CONSTRUCTION
2	
3	
4	
5	
6	

REVISIONS	
03/07/2024	PERMIT REVIEW



Date of issue:  
03/07/2024

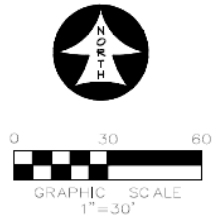
**CHS NEW FINE ARTS REHEARSAL BUILDING & TENNIS CENTER EXPANSION**  
for  
Coppell Independent School District  
185 W Parkway Blvd., Coppell, TX 75019

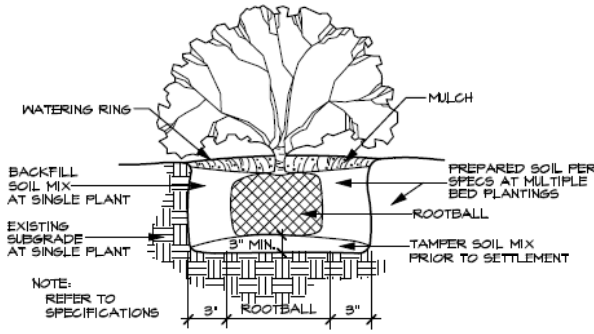
LANDSCAPE PLAN  
AREA C

JOB 23280.0000  
DATE 02/13/2024  
SHEET

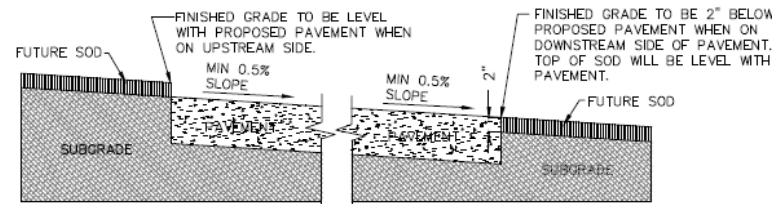
L 4

RAMSEY LANDSCAPE ARCHITECTS, LLC  
11914 WISHING WELL CT.  
FRISCO, TEXAS 75035  
PHONE (972) 335-0889  
FAX (489) 362-5433  
EMAIL: MIKE.RLA@ATT.NET

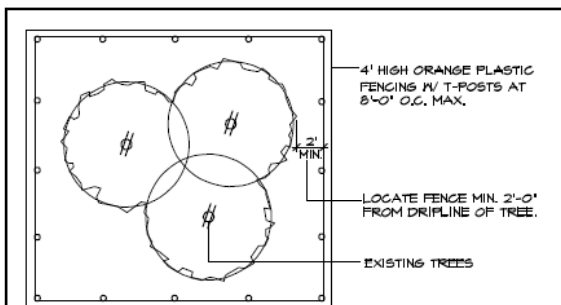




**SHRUB PLANTING DETAIL (TYPICAL)**  
SCALE: N.T.S.



**GRADING DETAIL FOR PAVEMENT WITHOUT CURB**  
SCALE: N.T.S.



- EXISTING TREES WITHIN CONTRACT LIMITS ARE SHOWN ON THE DRAWINGS. EXISTING TREES DESIGNATED FOR REMOVAL SHALL BE FLAGGED AT THE PROJECT SITE WITH FLAGGING BY THE CONTRACTOR.
- PROTECT ALL INDIVIDUAL TREES OR GROUPS OF TREES TO BE PRESERVED BY ERECTING A BARRIER AROUND EACH TREE OR GROUP OF TREES. INSTALL AND MAINTAIN BARRIER AT TREE DRIPLINE. BARRIERS SHALL REMAIN IN PLACE UNTIL REMOVAL IS NECESSARY.
- IN THE EVENT THAT HEAVY CONSTRUCTION IS SCHEDULED TO OCCUR WITHIN THE DRIPLINE OF AN EXISTING TREE, CONTRACTOR SHALL ERECT A PROTECTION FENCE OUTSIDE THE DRIPLINE UNTIL THIS CONSTRUCTION IS SCHEDULED TO OCCUR. THE PROTECTION FENCE MAY THEN BE ADJUSTED AS REQUIRED TO COMPLETE THE PROPOSED CONSTRUCTION. AFTER CONSTRUCTION IN THIS AREA IS COMPLETED, THE PROTECTION FENCE SHALL BE ADJUSTED TO ITS ORIGINAL LOCATION.
- CONTRACTORS SHALL NOT PARK, CLEAN TOOLS AND EQUIPMENT OR STORE MATERIALS WITHIN THE DRIPLINE OF ANY TREE.
- ALL ROOTS OVER 1" IN DIAMETER SHALL BE CUT CLEAN WITH A HAND SAW.

**TREE PROTECTION FENCE AND NOTES**  
SCALE: N.T.S.

LANDSCAPE TABULATIONS	
<b>PARKING LANDSCAPE</b> 10% OF PKG. AREA, INCL. ADJ. WALKS / 1-3" CAL TREE PER 400 SF OF REG. LAND. ISLANDS TO NUMBER 12% OF PKG. SPACES / PKG. SCREEN FROM STREET AND ADJ. PROP. PERIMETER BUFFER OF 15' AT R.O.W. AND 10' AT ADJ. PROP. OR ALLEY WHERE PKG ABUTS. 1-3" TREE PER 50 LF IN ALL BUFFERS, NO MORE THAN 15 PKG SPACES IN A ROW WITH NO ISLAND, MIN. ISLAND 4' WIDE & 150 SF	
PARKING LANDSCAPE AREA	3,770 SF
GROSS NON-EXEMPT PARKING AREA	377 SF
PARKING LANDSCAPE AREA REQUIRED (3,770 X 10% = 377 SF)	377 SF
PARKING LANDSCAPE AREA PROVIDED	738 SF
<b>PARKING TREES</b>	
PARKING TREES REQUIRED (377 / 400 = 1)	1 TREE
PARKING TREES PROVIDED	2 TREES
<b>PARKING ISLANDS</b>	
TOTAL PARKING SPACES	4 SPACES
PARKING ISLANDS REQUIRED (4 SPACES X 12% = 1.1)	1 ISLAND
PARKING ISLANDS PROVIDED	2 ISLANDS
PARKING ISLAND TREES PROVIDED	2 TREES
<b>NON-VEHICULAR OPEN SPACE</b> 15% OF AREA NOT COVERED BY BUILDINGS. TREES BASED ON % OF NON-VEHICULAR OPEN SPACE LANDSCAPE: LESS THAN 30%-1/2,500, 30%-44%-1/3,000, 50%+-1/4,000.	
CONSTRUCTION AREA	190,770 SF
BUILDING AREA	46,260 SF
NON-VEH. OPEN SPACE REQ. (190,770-46,260=144,510 SF X 15% =)	21,677 SF
NON-VEH. OPEN SPACE PROVIDED (67%)	48,040 SF
NON-VEH. OPEN SPACE TREES REQ. (21,677 SF / 4,000 SF =)	5.4 TREES
NON-VEH. OPEN SPACE TREES PROVIDED (12 SHADE, 8 ORN.)	14 TREES
<b>PERIMETER LANDSCAPE (WEST)</b> 10' WIDE LANDSCAPE AREA, 1-3" TREE PER 50 LF	
PERIMETER LANDSCAPE WIDTH REQUIRED	10' WIDE
PERIMETER LANDSCAPE WIDTH PROVIDED	10' UP TO 30' WIDE
PERIMETER TREES REQUIRED (244 LF / 50 LF =)	6 TREES

TREES					
QUANTITY	SYMBOL	CALLOUT	COMMON NAME	SCIENTIFIC NAME	SIZE & CONDITION
7		LIVE OAK	Live Oak	Quercus virginiana	4" caliper, 12'-14' Ht./ 6'-7" spread, B&B straight trunk full rounded canopy
1		RED OAK	Shumard Red Oak	Quercus shumardii	4" caliper, 12'-14' Ht./ 6'-7" spread, B&B straight trunk full rounded canopy
4		PISTACHE	Chinese Pistache	Pistacia chinensis	4" caliper, 12'-14' Ht./ 6'-7" spread, B&B straight trunk full rounded canopy
4		T. YAUPON	Yaupon Holly	Ilex vomitoria	1" caliper per trunk, 5 trunk minimum, 8" Ht./3' spread, B&B or container, female = heavy berried
2		D. WILLOW	Desert Willow	Chilopsis linearis	1" caliper per trunk, 5 trunk minimum, 8" Ht./3' spread, B&B or container, female = heavy berried
2		RED BUD	Oklahoma Red Bud	Cercis canadensis 'oklahoma'	6" Ht./3' spread min. container only pyramidal form, full to the ground single straight trunk, bushy, specimen
GROUNDCOVER / VINES					
QUANTITY	SYMBOL	CALLOUT	COMMON NAME	SCIENTIFIC NAME	SIZE AND CONDITION
AS SHOWN		SOD	Common Bermuda Grass	Cynodon dactylon	Solid Rolled Sod refer to specifications
MISCELLANEOUS					
AS SHOWN		EDGE	Ryerson steel edge 1/8" x 4" with 12" stakes, green in color		Install to separate shrubs from grass or as called out.

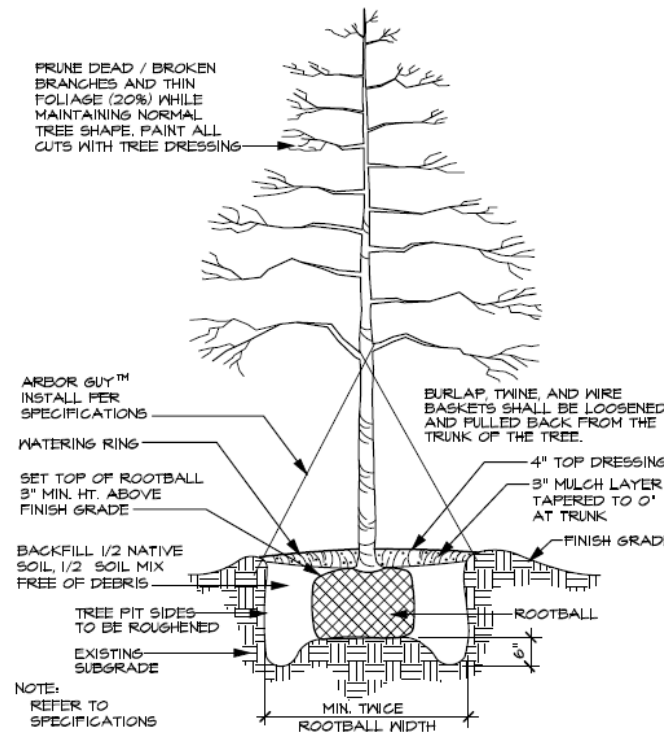
LANDSCAPE CONTRACTOR SHALL VERIFY ALL PLANT QUANTITIES

**LANDSCAPE NOTES**

LANDSCAPE CONTRACTOR SHALL REPLACE ALL AREAS DISTURBED BY CONSTRUCTION. THE DISTURBED AREAS SHALL BE REPLACED WITH SOD/HYDRO PER THE SPECIFICATIONS UNLESS NOTED OTHERWISE ON THE PLANS.

LANDSCAPE CONTRACTOR SHOULD VISIT SITE AND REFERENCE CIVIL ENGINEER'S GRADING PLAN PRIOR TO BIDDING AND COMMENCEMENT OF CONSTRUCTION TO VERIFY AREAS TO BE DISTURBED BY CONSTRUCTION ACTIVITIES.

REFERENCE CIVIL PLANS FOR FINAL GRADING AND UTILITIES.



**TREE PLANTING DETAIL (TYPICAL)**  
SCALE: N.T.S.

**RAMSEY LANDSCAPE ARCHITECTS, LLC**  
11914 WISHING WELL CT.  
FRISCO, TEXAS 75035  
PHONE (972) 355-0899  
FAX (469) 352-5433  
EMAIL: MIKE.RLA@ATT.NET

**CORGAN**

CORGAN  
401 N. Houston St  
Dallas, TX 75202  
T: 214-748-2000

**ISSUES**

1	02/13/2024	ISSUE FOR CONSTRUCTION
2		
3		
4		
5		
6		

**REVISIONS**

1	03/07/2024	PERMIT REVIEW



Date of issue:  
03/07/2024

**CHS NEW FINE ARTS REHEARSAL BUILDING & TENNIS CENTER EXPANSION**  
for  
Coppell Independent School District  
185 W Parkway Blvd., Coppell, TX 75019

**LANDSCAPE DETAILS**

JOB 23280.0000  
DATE 02/13/2024  
SHEET