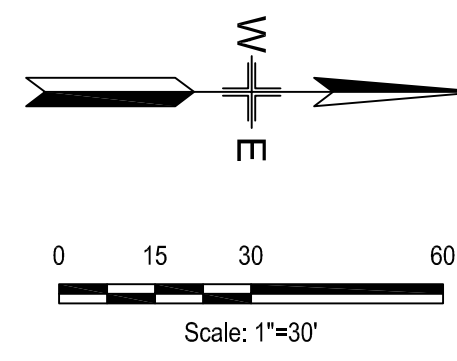
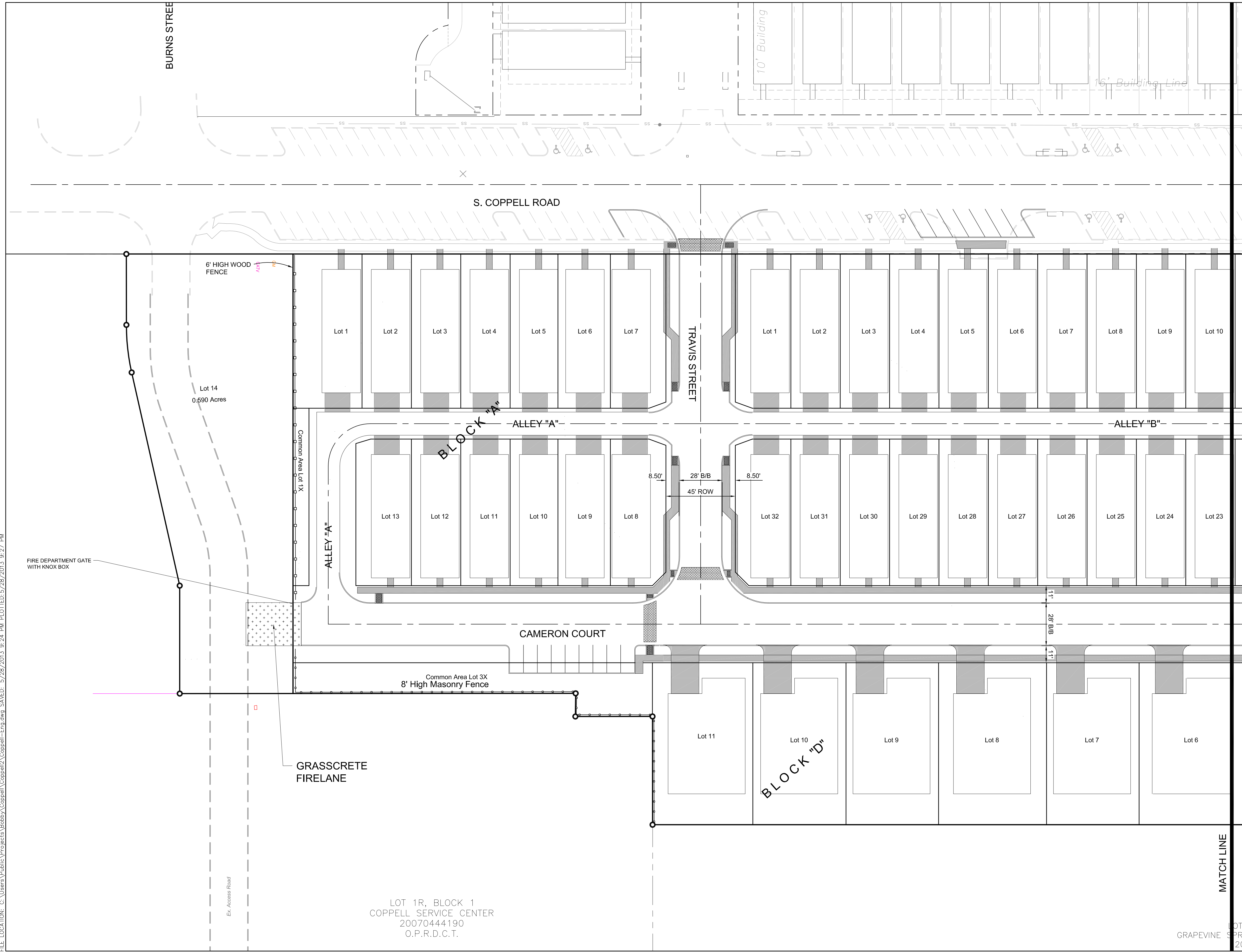
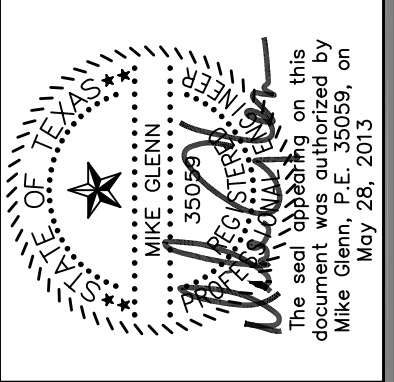


FILE LOCATION: C:\Users\Public\Projects\Bobby\Coppel\Coppel2\Coppel-Eng.dwg, SAVED: 5/28/2013 9:24 PM, PLOTTED: 5/28/2013 9:27 PM



GLENN ENGINEERING
 TEXAS REGISTRATION NUMBER: F-303
 PHONE (972) 717-5151
 105 DECKER COURT, SUITE 910
 IRVING, TEXAS 75062
 FAX (972) 717-2176



PD-108R11-H
 OLD TOWN (MAIN ST.)
 PHASE II
 COPPELL, TEXAS

SOUTH DETAIL
 SITE PLAN

Revisions:

Issue Dates:

Review:	
Permit:	
Construction:	

Scale:	1" = 30'
Drawn By:	KKE
Checked By:	CMG
Project No.:	XX-XXXXXX

Sheet
C2

APPLICANT:
 GLENN ENGINEERING CORPORATION
 105 DECKER COURT, SUITE 910
 IRVING, TEXAS 75062
 TBPE FIRM NO. F-303
 TEL: (972) 717-5151
 FAX: (972) 717-2176
 CONTACT: MIKE GLENN, PE

LOT 1R, BLOCK 1
 COPPELL SERVICE CENTER
 20070444190
 O.P.R.D.C.T.

LOT 1R, BLOCK 1
 COPPELL SERVICE CENTER
 20070444190
 O.P.R.D.C.T.

