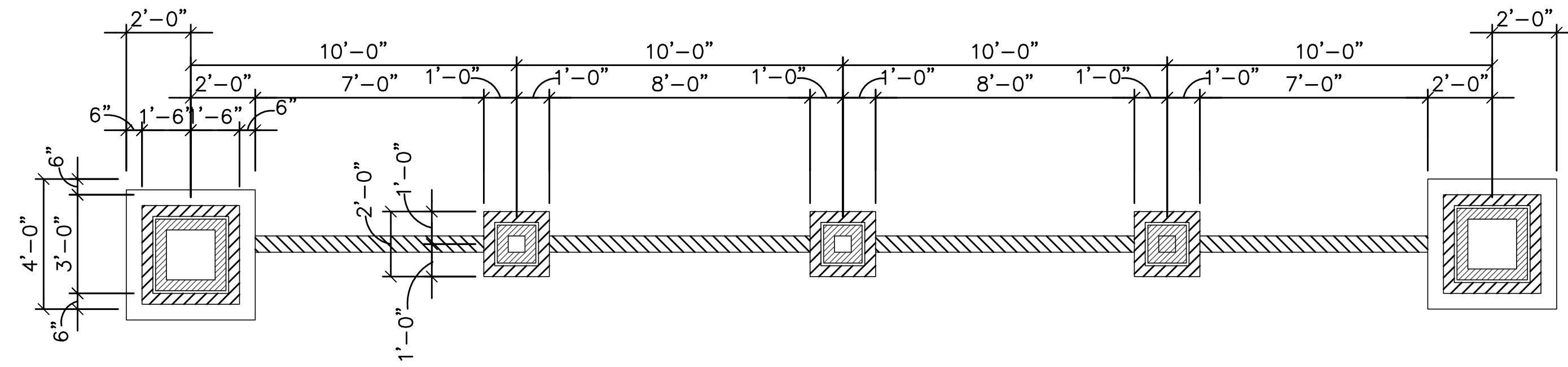
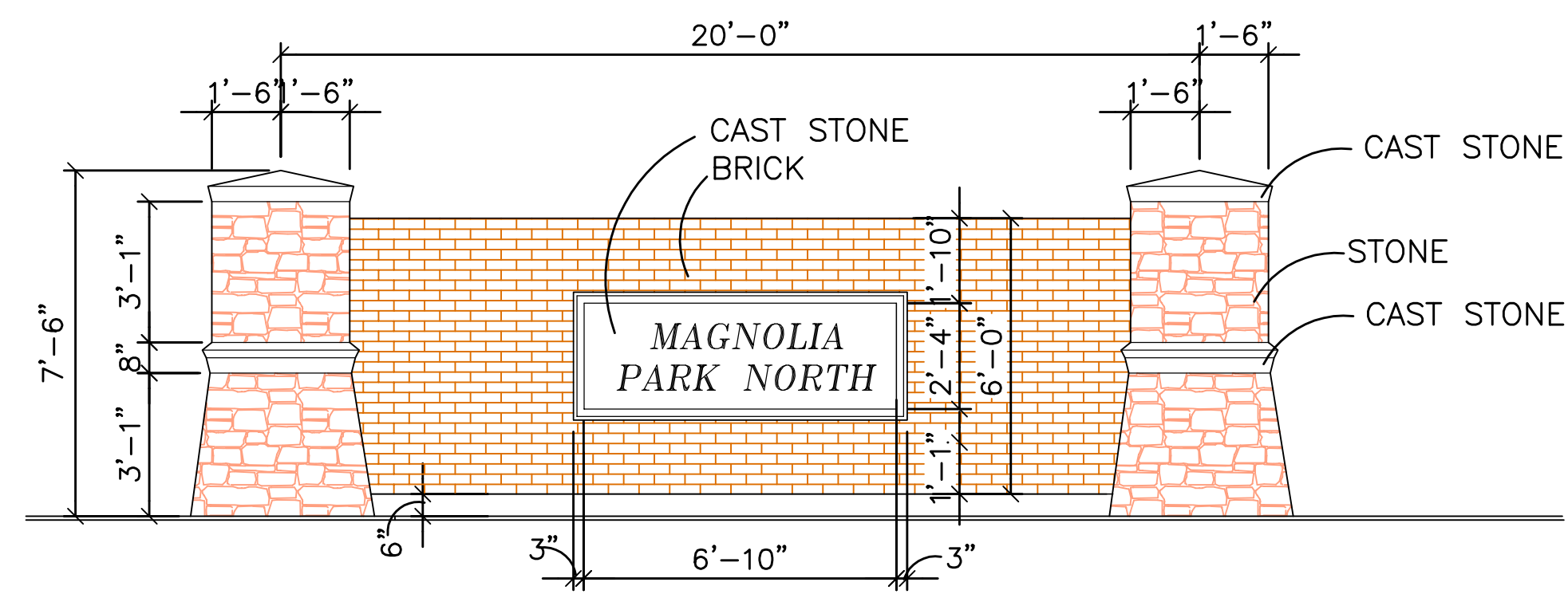


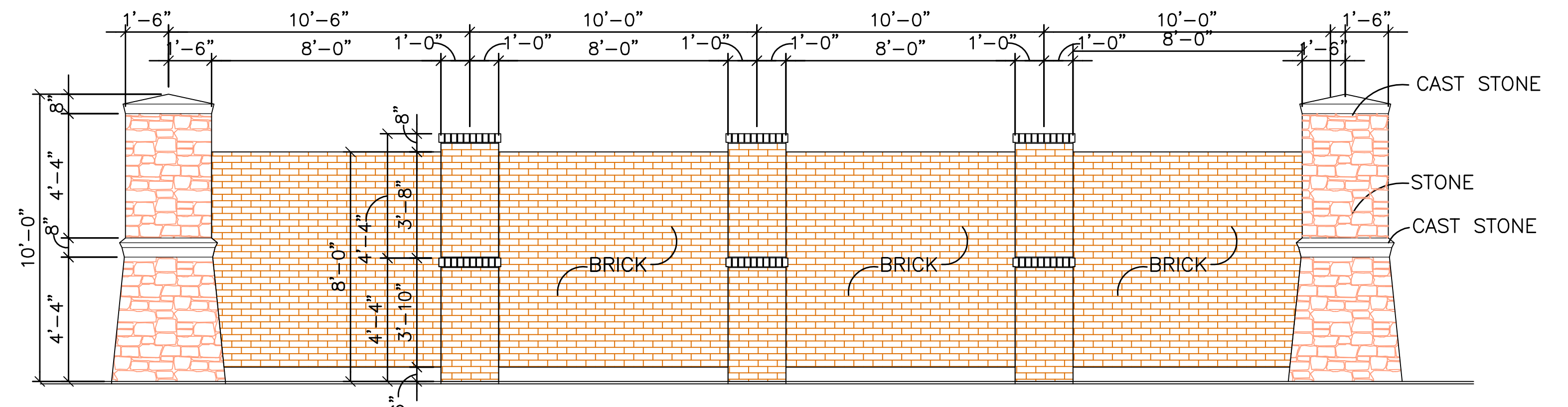
TYPICAL ENTRY PLAN-VIEW
1/4"=1'0"



TYPICAL SOUTH AND WEST (ALLEY) SCREENING WALL PLAN-VIEW
1/4"=1'0"

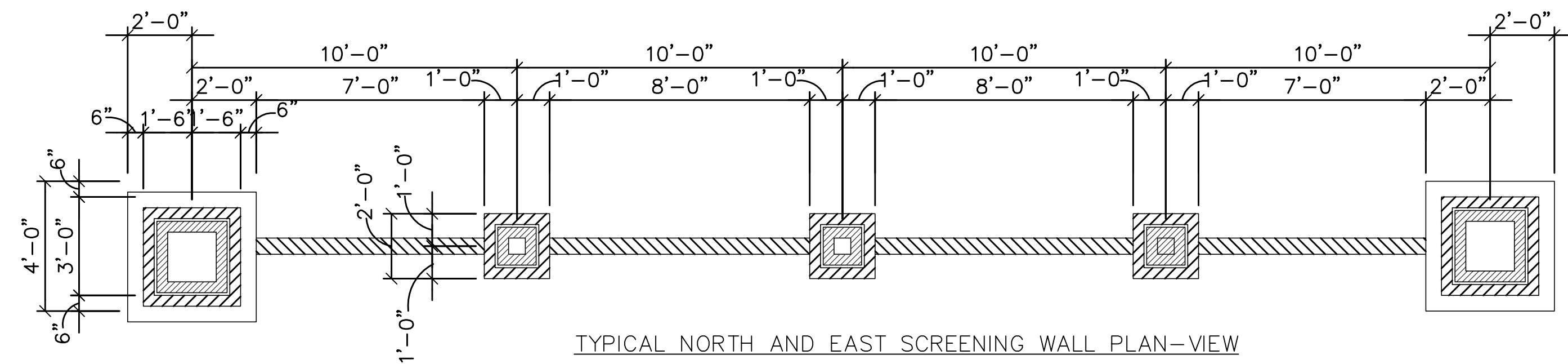


TYPICAL ENTRY ELEVATION
1/4"=1'0"

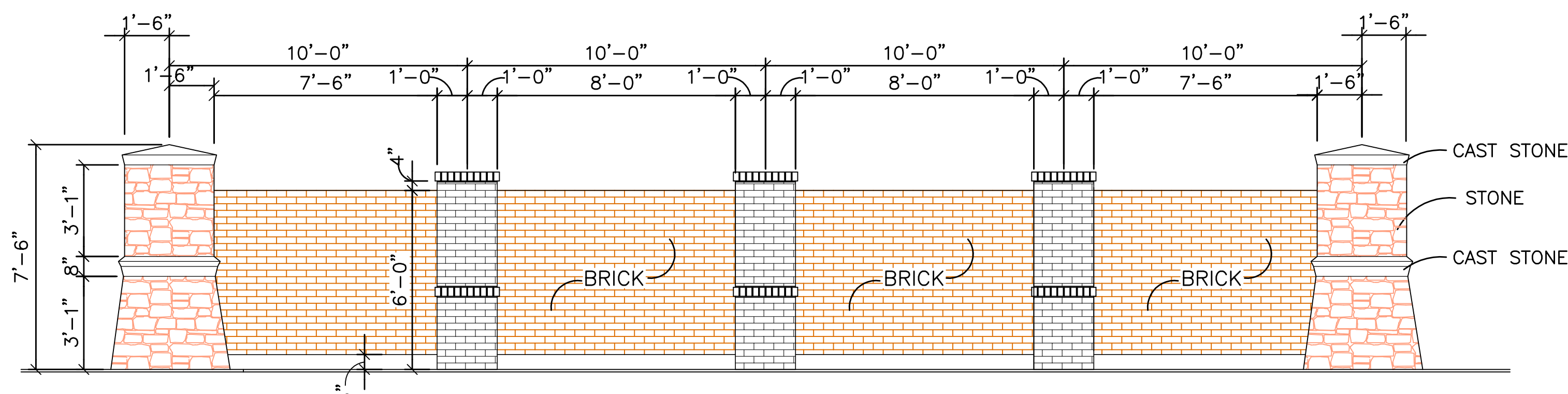


TYPICAL SOUTH AND WEST (ALLEY) SCREENING WALL ELEVATION
1/4"=1'0"

DRAWINGS OF SCREENING WALLS INDICATE THE HEIGHTS OF COLUMNS AND MASONRY WALLS. EXACT MASONRY MATERIALS, PATTERN AND CONFIGURATION SHALL BE SUBMITTED WITH CONSTRUCTION PERMIT



TYPICAL NORTH AND EAST SCREENING WALL PLAN-VIEW
1/4"=1'0"



TYPICAL NORTH AND EAST SCREENING WALL ELEVATION
1/4"=1'0"

PRELIMINARY SCREENING WALL AND FENCE DETAILS

~ 28 SINGLE FAMILY LOTS & THREE COMMON LOTS~
(Lots 1-28, Lot 1X, 2X, 3X)

MAGNOLIA PARK NORTH ADDITION

BEING A 5.414 ACRE TRACT OF LAND, OUT OF THE CLARINDA SQUIRES SURVEY, ABSTRACT NO.1327 CITY OF COPPELL, DALLAS COUNTY, TEXAS

APPLICANT/DEVELOPER:

TIMBERLAND CREEK COMPANIES, INC.
3930 GLADE ROAD - SUITE 108-322
COLLEYVILLE, TEXAS 76034
CONTACT: TOMMY CANSLER
469-688-8224 - 111TCC@ATT.NET

PREPARED BY:

T. TABOR CONSULTING, PLLC
FIRM I.D.# 5279
1301 EAST DEBBIE LANE, SUITE 102-152
MANSFIELD, TEXAS 76063
CONTACT: TOMMY D. TABOR, P.E.
972-896-6989 - TTABOR@TTC-PLLC.COM

PREPARED - FEB. 26, 2013
1" = 40'

THESE DOCUMENTS ARE FOR INTERIM REVIEW AND ARE NOT INTENDED FOR CONSTRUCTION, OR BIDDING PURPOSES AND WAS PREPARED BY T. TABOR CONSULTING, PLLC (5279) UNDER TOMMY D. TABOR, TEXAS P.E. NO.57248 AUTHORIZATION