



1 SOUTH ELEVATION
1/8" = 1'-0"

NORTH MATERIALS	SQ. FT.	PERCENTAGE	EAST MATERIALS	SQ. FT.	PERCENTAGE
3 STEP STUCCO SYSTEM	2,047 SQ. FT.	70%	3 STEP STUCCO SYSTEM	888 SQ. FT.	42%
DOOR	42 SQ. FT.		DOOR	14 SQ. FT.	
GLAZING	482 SQ. FT.		GLAZING	336 SQ. FT.	
STONE VENEER TYPICAL	355 SQ. FT.	12%	STONE VENEER TYPICAL	920 SQ. FT.	43%
STANDING SEAM METAL	264 SQ. FT.		STANDING SEAM METAL	188 SQ. FT.	
STUCCO FOAM DETAIL	543 SQ. FT.	18%	STUCCO FOAM DETAIL	321 SQ. FT.	15%
TOTAL	2,845 SQ. FT.	100%	TOTAL	2,138 SQ. FT.	100%

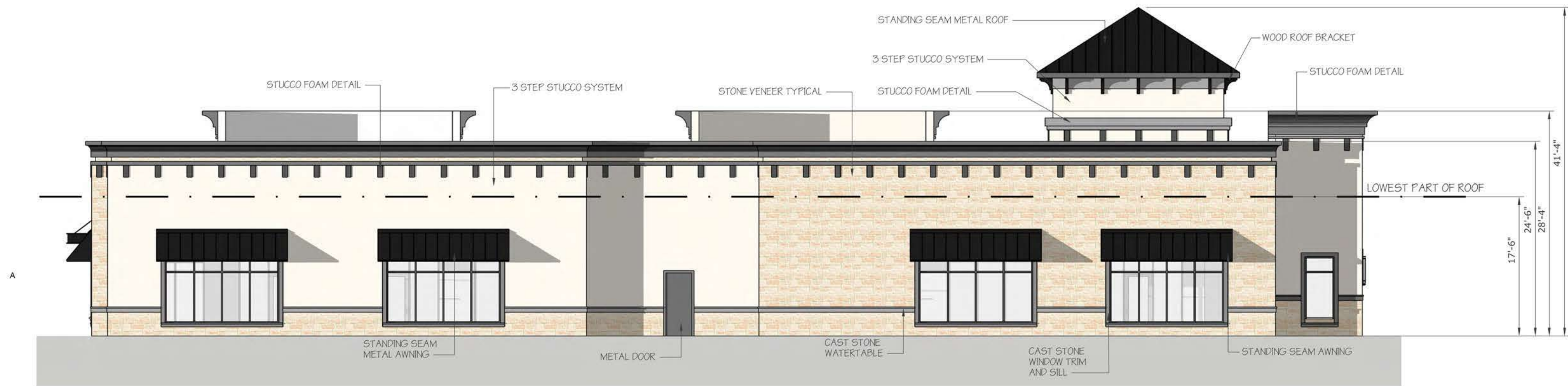
SOUTH MATERIALS	SQ. FT.	PERCENTAGE	WEST MATERIALS	SQ. FT.	PERCENTAGE
3 STEP STUCCO SYSTEM	1,612 SQ. FT.	51%	3 STEP STUCCO SYSTEM	936 SQ. FT.	44%
DOOR	65 SQ. FT.		DOOR	14 SQ. FT.	
GLAZING	710 SQ. FT.		GLAZING	372 SQ. FT.	
STONE VENEER TYPICAL	982 SQ. FT.	32%	STONE VENEER TYPICAL	829 SQ. FT.	40%
STANDING SEAM METAL	226 SQ. FT.		STANDING SEAM METAL	130 SQ. FT.	
STUCCO FOAM DETAIL	532 SQ. FT.	17%	STUCCO FOAM DETAIL	333 SQ. FT.	16%
TOTAL	3,136 SQ. FT.	100%	TOTAL	2,089 SQ. FT.	100%



2 EAST ELEVATION
1/8" = 1'-0"



3 WEST ELEVATION
1/8" = 1'-0"

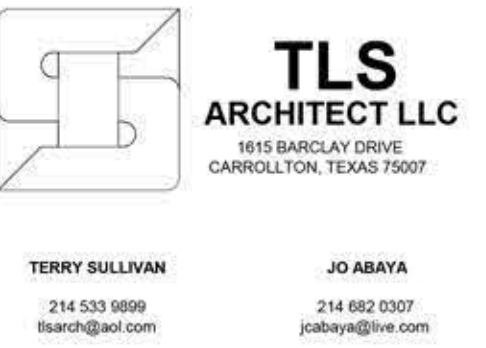


4 NORTH ELEVATION
1/8" = 1'-0"



CIVIL ENGINEER
CLAY MOORE ENGINEERING
817.281.0572
1903 CENTRAL DR. SUITE #406
BEDFORD, TX 76021

ARCHITECT
TLS ARCHITECTS
214.533.9899
1615 BARCLAY DRIVE
CARROLLTON, TX 75007



HIGHLANDS AT COPPELL
BUILDING 1
COPPELL, TEXAS
TRACT II OF RS DENTON TAP INVESTMENTS, LLC
LOT 38(1)
2.483 ACRES OF LAND SITUATED IN THE C.SQUIRES SURVEY
ABSTRACT NO. A1682A

REVISIONS

SHEET CONTENT
GENERAL NOTES

PROJECT No:
0000
PROJECT DESCRIPTION
DESIGNED BY:
JC ABAYA
DATE ISSUED:
00/00/00
SHEET No:
A - 104



NORTH MATERIALS	SQ. FT.	PERCENTAGE
3 STEP STUCCO SYSTEM	2,336 SQ. FT.	68%
DOOR	14 SQ. FT.	
GLAZING	424 SQ. FT.	
STONE VENEER TYPICAL	546 SQ. FT.	16%
STANDING SEAM METAL	264 SQ. FT.	
STUCCO FOAM DETAIL	541 SQ. FT.	16%
TOTAL	3,423 SQ. FT.	100%

EAST MATERIALS	SQ. FT.	PERCENTAGE
3 STEP STUCCO SYSTEM	892 SQ. FT.	42%
DOOR	14 SQ. FT.	
GLAZING	336 SQ. FT.	
STONE VENEER TYPICAL	902 SQ. FT.	43%
STANDING SEAM METAL	198 SQ. FT.	
STUCCO FOAM DETAIL	321 SQ. FT.	15%
TOTAL	2,115 SQ. FT.	100%

SOUTH MATERIALS	SQ. FT.	PERCENTAGE
3 STEP STUCCO SYSTEM	1,737 SQ. FT.	50%
DOOR	65 SQ. FT.	
GLAZING	738 SQ. FT.	
STONE VENEER TYPICAL	1,183 SQ. FT.	34%
STANDING SEAM METAL	226 SQ. FT.	
STUCCO FOAM DETAIL	569 SQ. FT.	16%
TOTAL	3,489 SQ. FT.	100%

WEST MATERIALS	SQ. FT.	PERCENTAGE
3 STEP STUCCO SYSTEM	739 SQ. FT.	35%
DOOR	14 SQ. FT.	
GLAZING	372 SQ. FT.	
STONE VENEER TYPICAL	1,018 SQ. FT.	48%
STANDING SEAM METAL	130 SQ. FT.	
STUCCO FOAM DETAIL	352 SQ. FT.	17%
TOTAL	2,109 SQ. FT.	100%

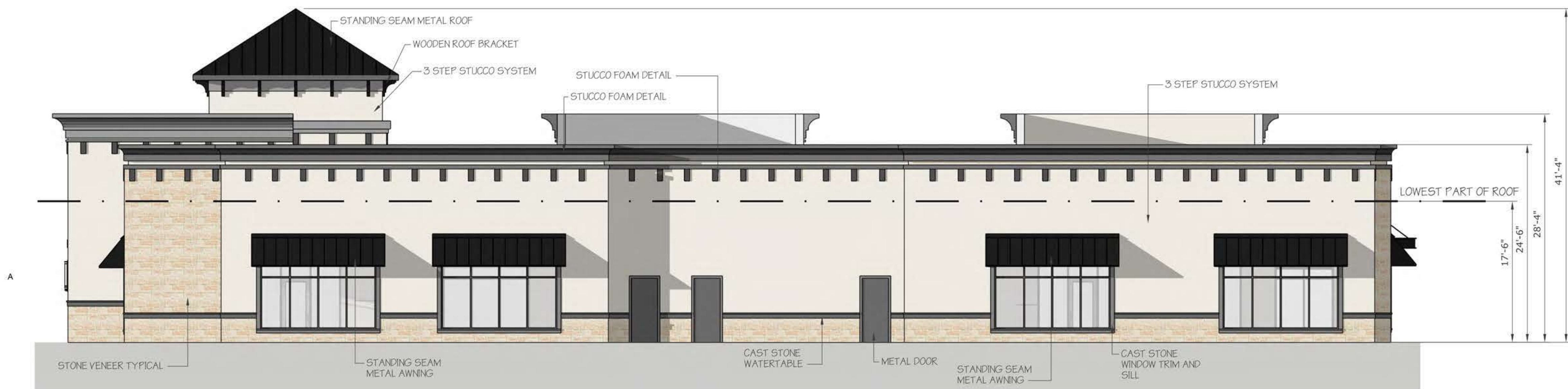
1 SOUTH ELEVATION
1/8" = 1'-0"



2 EAST ELEVATION
1/8" = 1'-0"



3 WEST ELEVATION
1/8" = 1'-0"

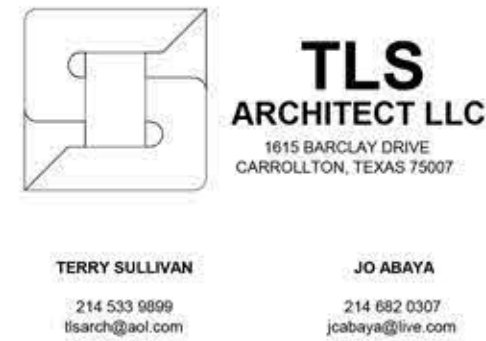


4 NORTH ELEVATION
1/8" = 1'-0"



CIVIL ENGINEER
CLAY MOORE ENGINEERING
817.281.0572
1903 CENTRAL DR. SUITE #406
BEDFORD, TX 76021

ARCHITECT
TLS ARCHITECTS
214.533.9899
1615 BARCLAY DRIVE
CARROLLTON, TX 75007



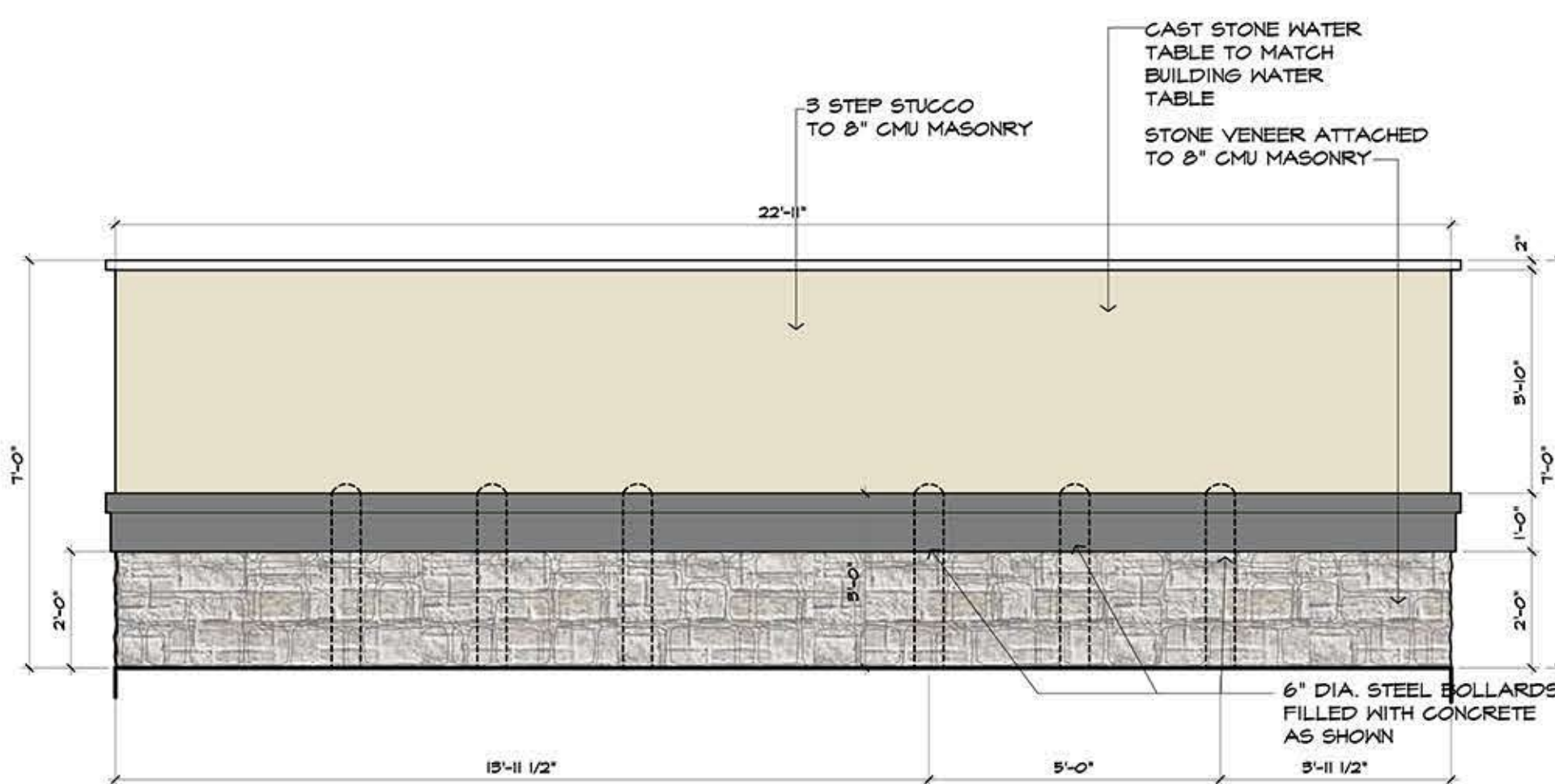
HIGHLANDS AT COPPELL BUILDING 2 COPPELL, TEXAS

TRACT II OF RS DENTON TAP INVESTMENTS, LLC
LOT 38(1)
2.483 ACRES OF LAND SITUATED IN THE C SQUIRES SURVEY
ABSTRACT NO. A1682A

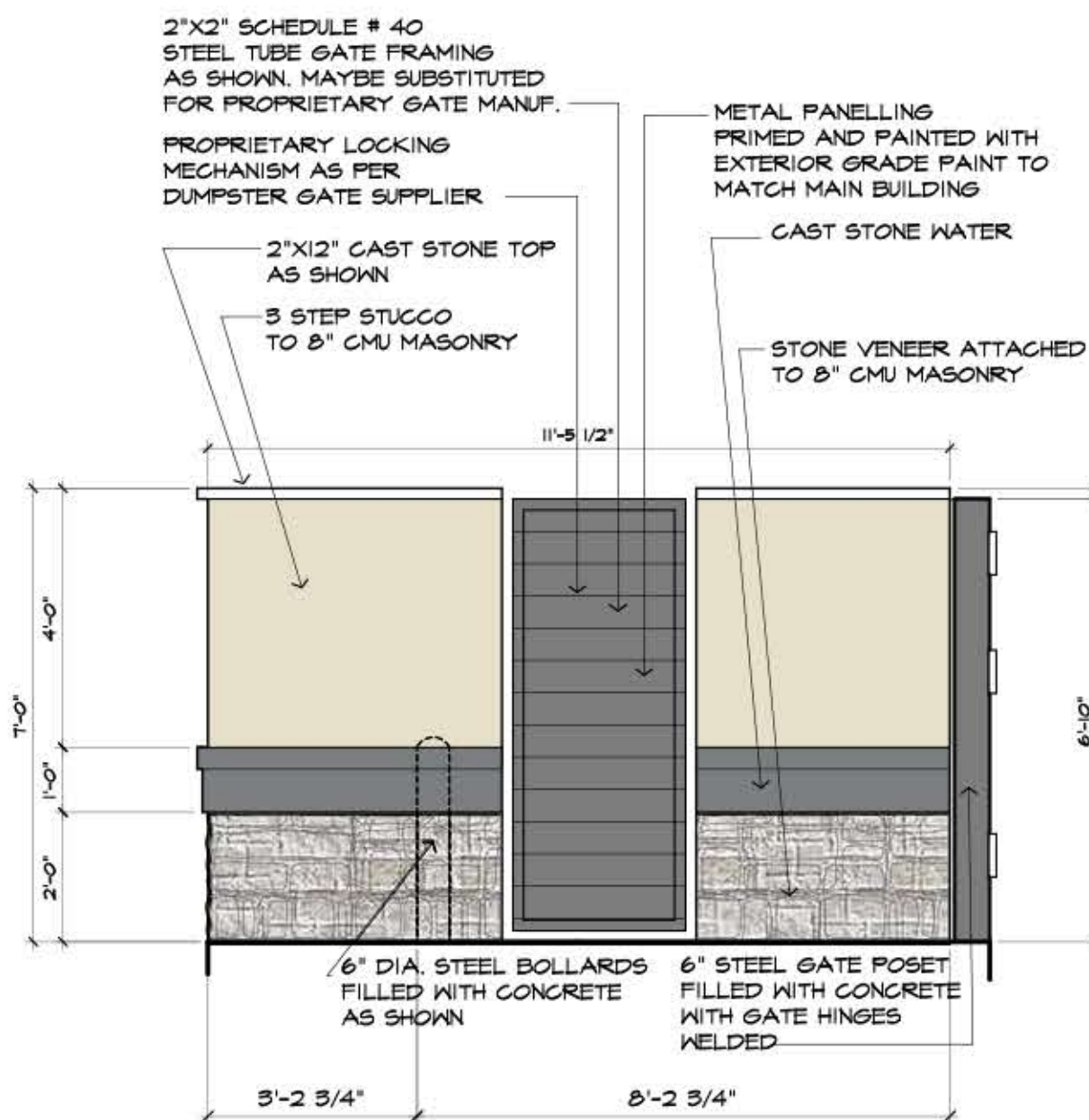
REVISIONS

SHEET CONTENT GENERAL NOTES

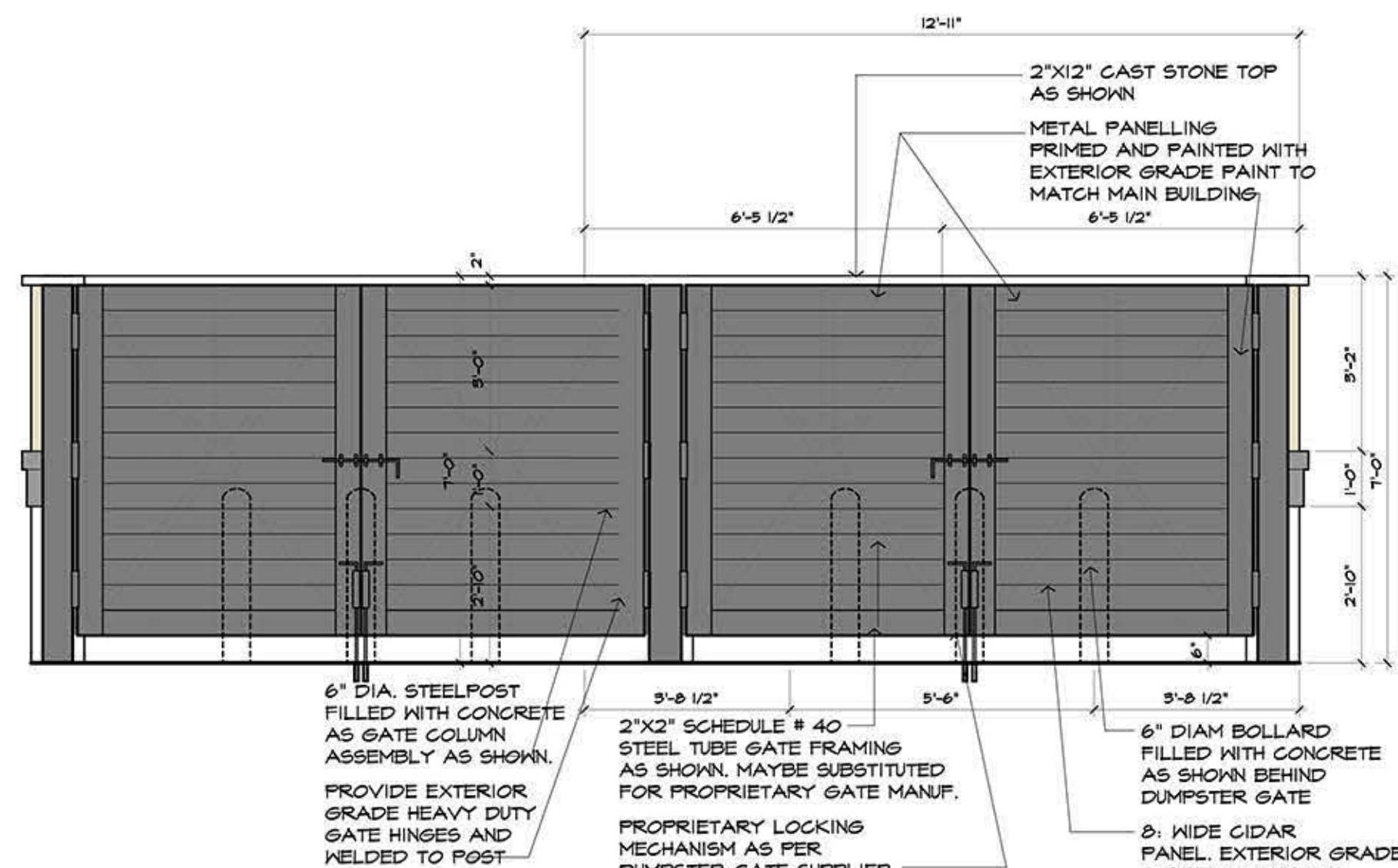
PROJECT No.	0000
PROJECT DESCRIPTION	***
DESIGNED BY:	JC ABAYA
DATE ISSUED:	00/00/00
SHEET No.	A - 104



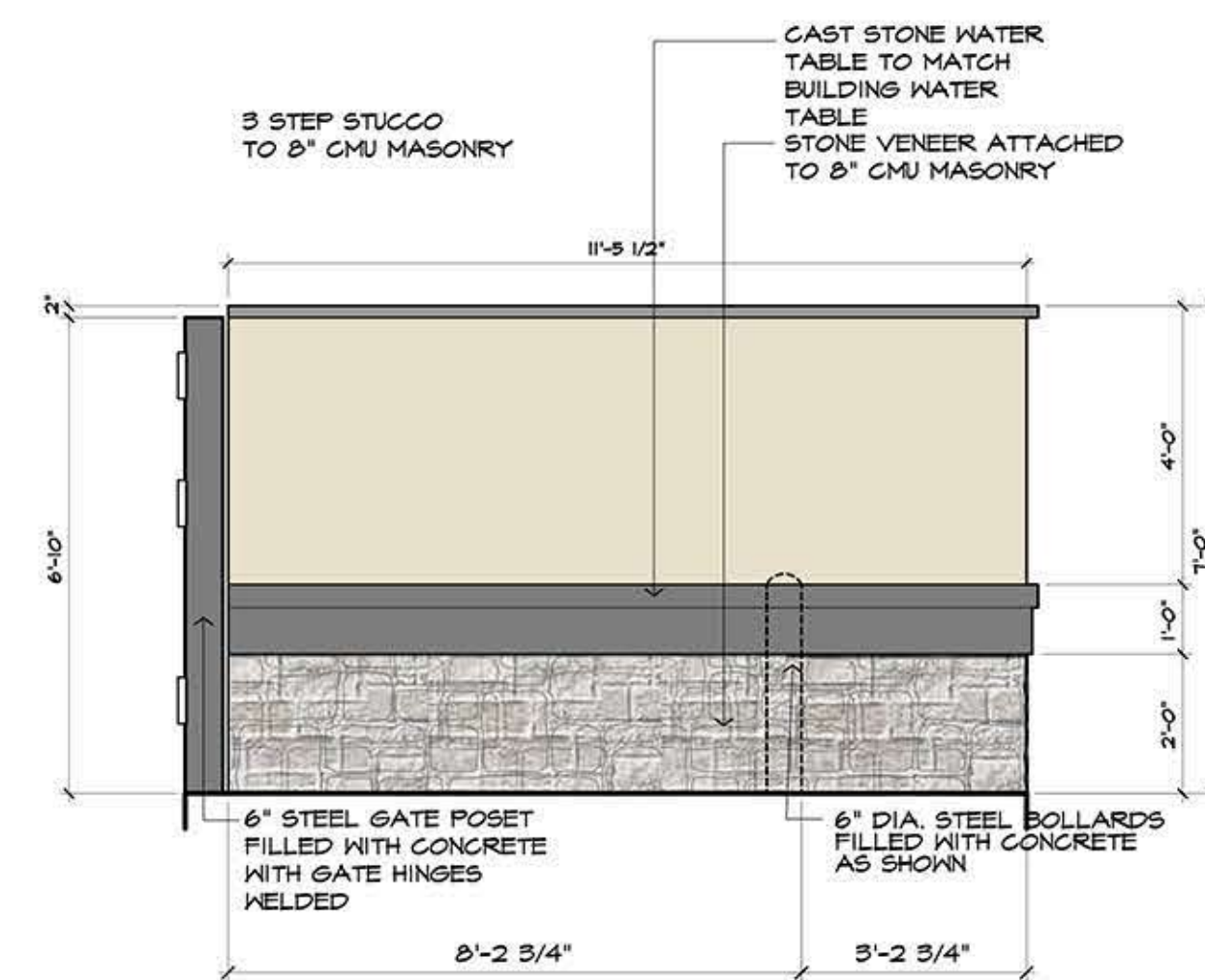
3 Rear Elevation
SCALE: 3/8" = 1'-0"



3 Left Side Elevation
SCALE: 3/8" = 1'-0"

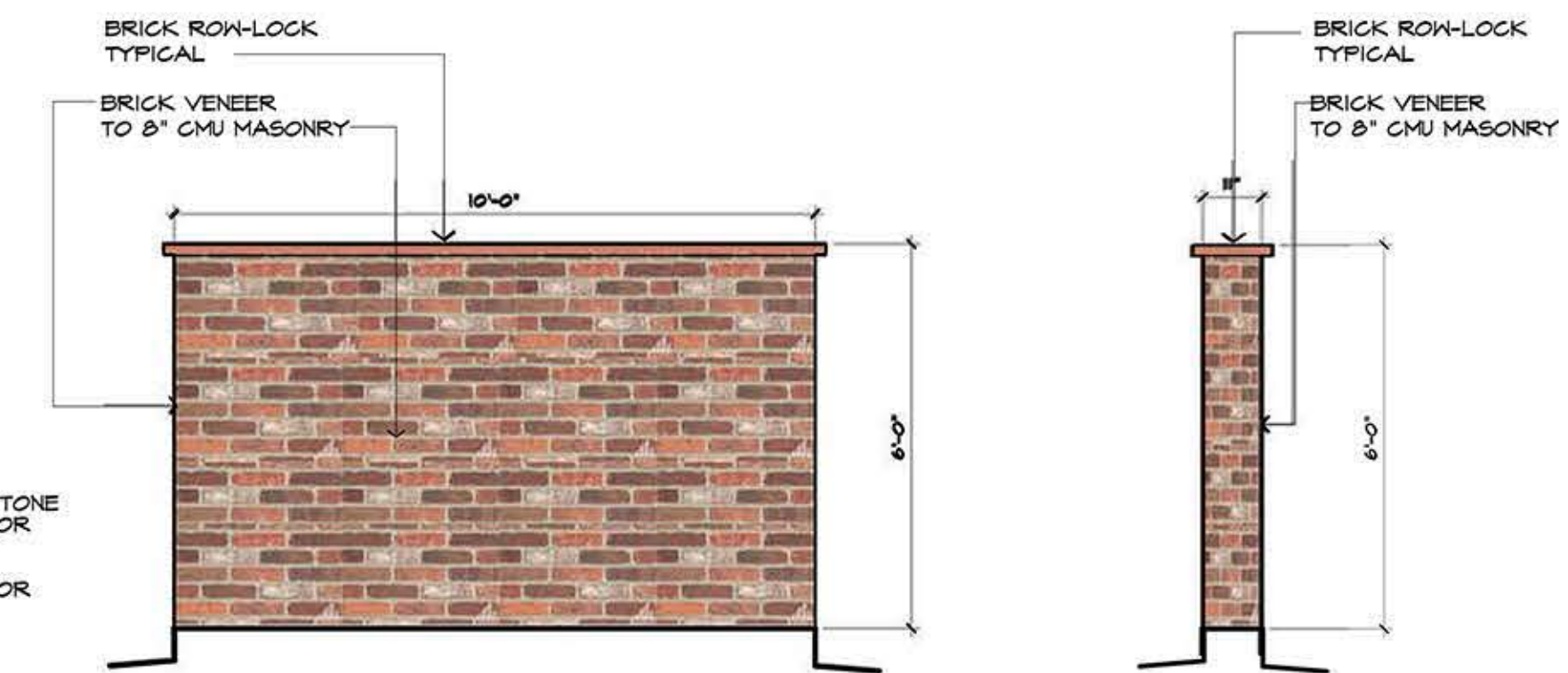


2 Front Elevation
SCALE: 3/8" = 1'-0"

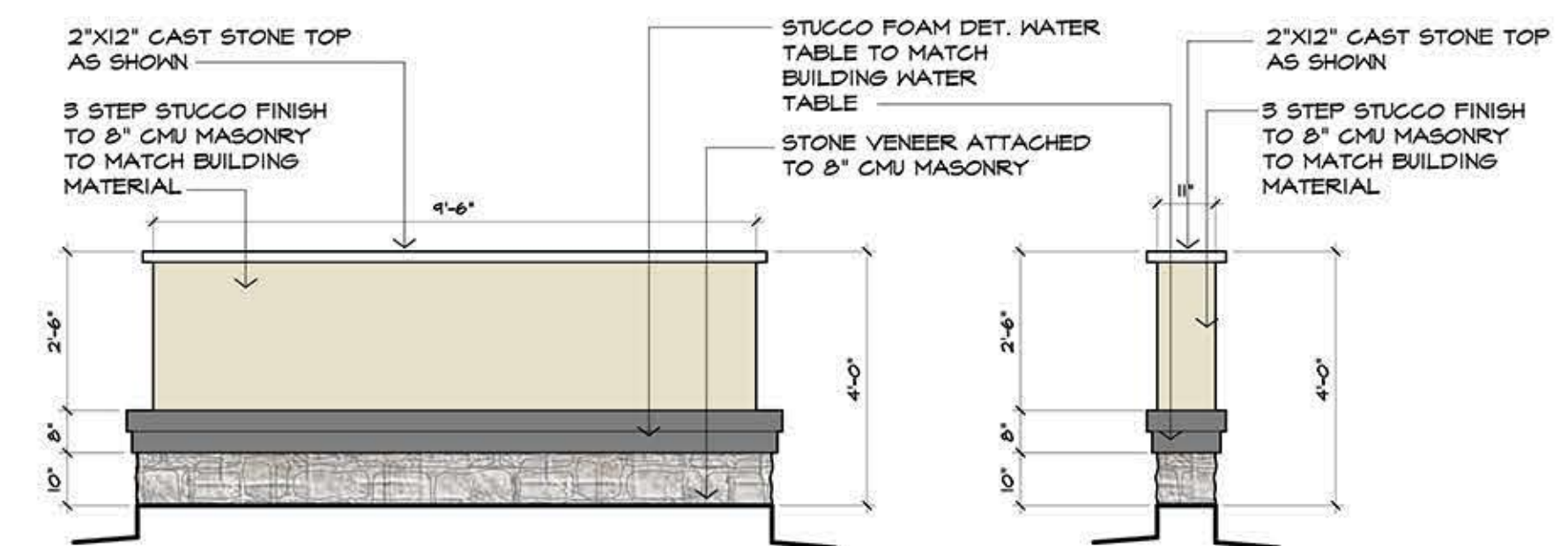


3 Right Side Elevation
SCALE: 3/8" = 1'-0"

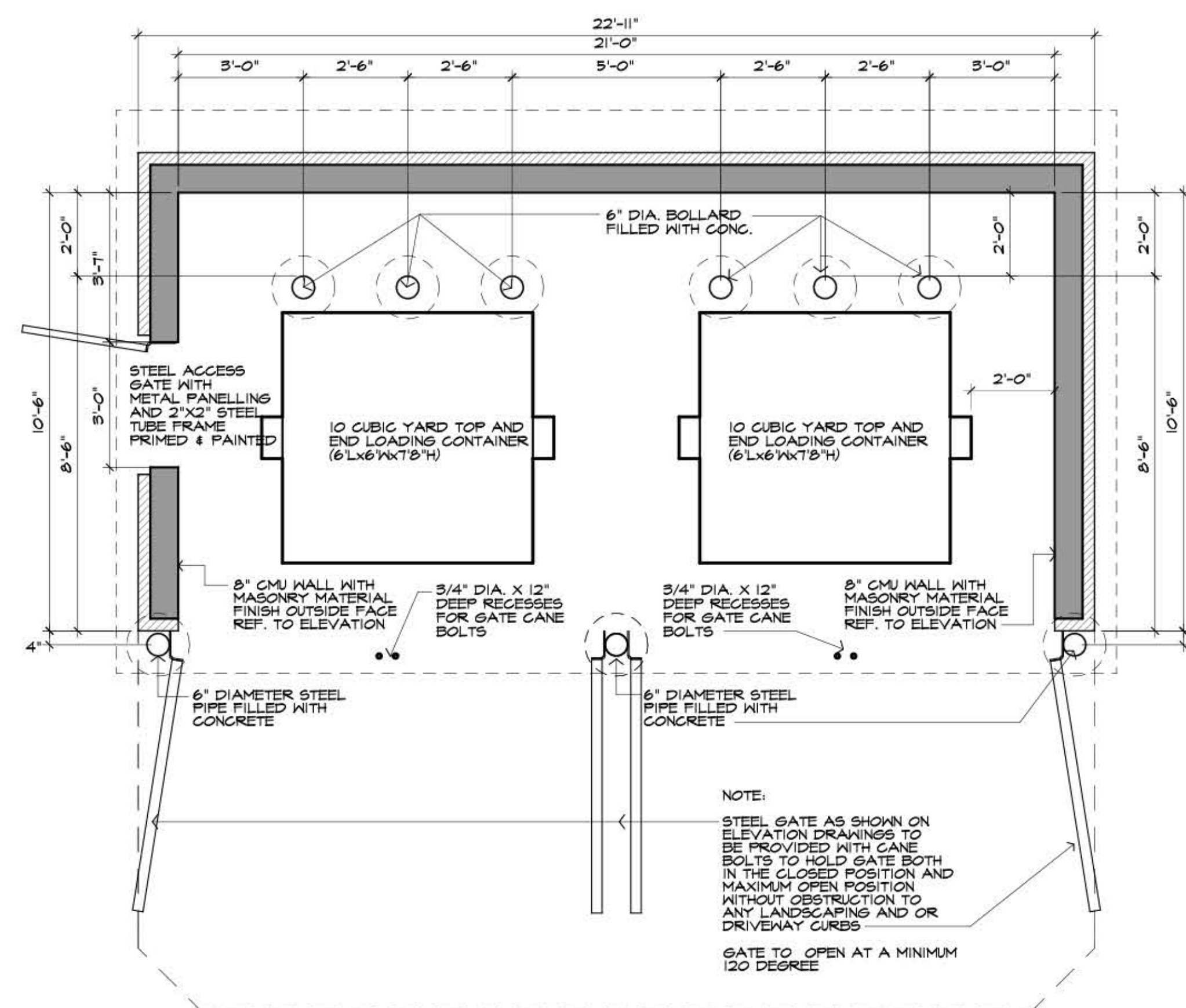
PROPERTY SCREENING WALL SPECS
BRICK : CAMBRIDGE ROBINSON BRICK
MANUFACTURER :
STONE : BRISCOE CHALK LONE STAR STONE
MANUFACTURER :
CAST STONE : TYPICAL CEMENT CAST STONE TO MATCH BUILDING COLOR
STUCCO : 3 STEP STUCCO TO MATCH BUILDING COLOR



7 Typical Screening Wall Design
SCALE: 3/8" = 1'-0"



6 TYPICAL MONUMENT SIGN DESIGN & DETAIL
SCALE: 3/8" = 1'-0"



1 Dumpster Floor Plan
SCALE: 3/8" = 1'-0"



TERRY SULLIVAN 214 533 8996 tsullivan@tlsarch.com
JO ABAYA 214 622 3307 jabaya@tlsarch.com

HIGHLANDS AT COPPELL
BUILDING SHELL 1 & 2
COPPELL, TEXAS
TRACT II OF RS DENON TAP INVESTMENTS, LLC
LOT 3B(1)
2.493 ACRES OF LAND SITUATED IN THE C-SQUARES SURVEY
ABSTRACT NO. A1682A

REVISIONS		
No.	REVISION DATE	REVISION DESCRIPTION
1	XXXX-XX-XX	X
2		
3		

PLAN No. 2XXX 00 00 (XXX XXXX)

SHEET CONTENT
DUMSTER PLAN
SCREENING WALL
MONUMENT SIGN

PROJECT

DESIGNED BY: jca DRAWN BY: jca

DATE 2019-10-17

SHEET

Building Permit Comments