

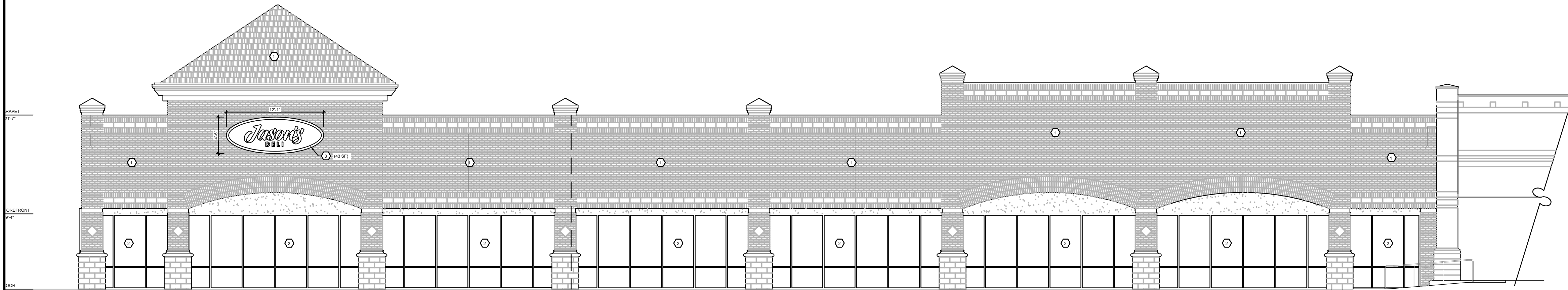
1

2

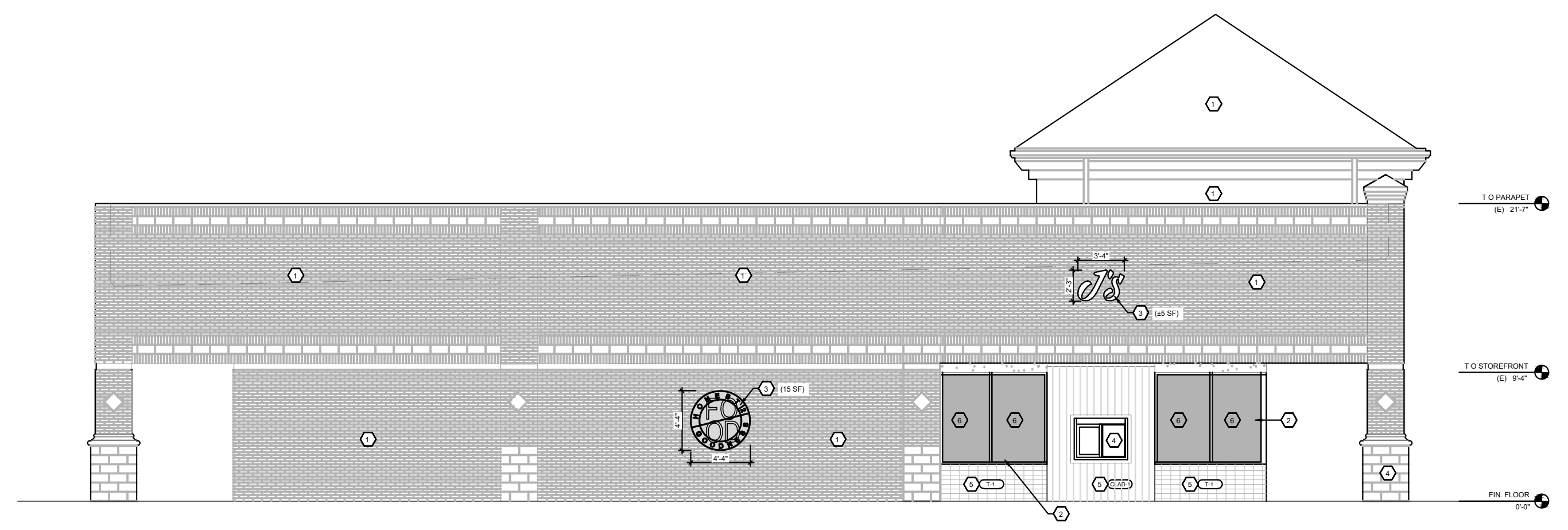
3

4

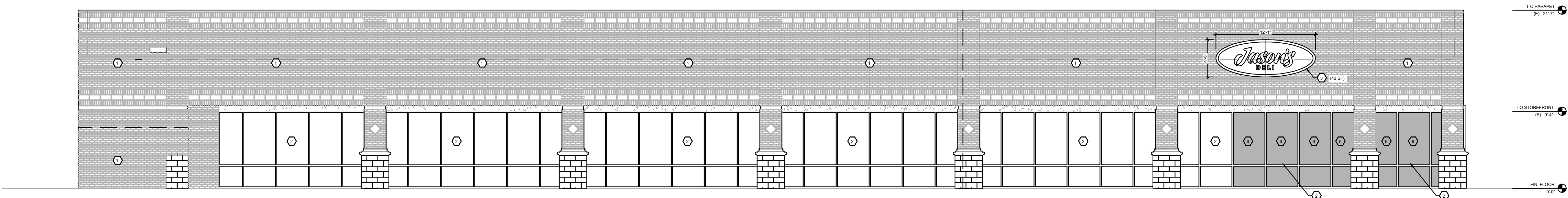
5



D2 WEST ELEVATION
1/8"=1'-0"



C2 NORTH ELEVATION
1/8"=1'-0"

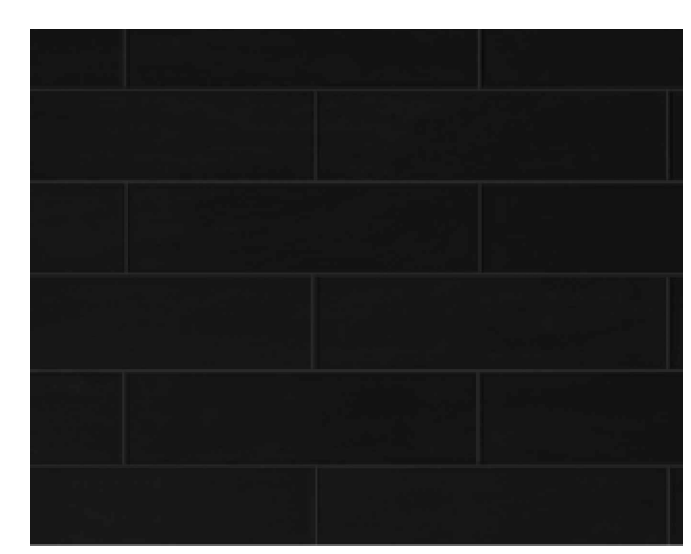


B2 EAST ELEVATION
1/8"=1'-0"

ELEVATION KEYNOTES	
1	EXISTING FINISHES TO REMAIN
2	EXISTING STOREFRONT TO REMAIN
3	SIGNAGE BY VENDOR, UNDER SEPARATE PERMIT
4	NEW DRIVE-THRU WINDOW
5	NEW FINISHES AS SCHEDULED
6	BLACK-OUT FILM
NOTE: ALL SIGNAGE UNDER SEPARATE PERMIT	



CLAD-1



T-1

NEW MATERIAL SCHEDULE			
MARK	DESCRIPTION	MANUFACTURER / REP.	MODEL
CLAD-1	WOOD LOOK WALL CLADDING	ATAS INTERNATIONAL	STERRACORE, .032 GAUGE ALUMINUM, COLOR: BIRCH (57) w/ SMOOTH TEXTURE, 48" W x 144" L, 6MM THICKNESS
T-1	EXTERIOR PORCELAIN TILE	CREATIVE MATERIALS CORP. / COLLECTION: METROPOLIS	COLOR: BLACK, FINISH: GLOSSY, GROUT PRODUCT: MAPEI KERAPOXY CQ, GROUT COLOR: 5221 MOONBEAM



REV.	DATE	DESCRIPTION

PRELIMINARY DRAFT
NOT FOR CONSTRUCTION,
BID, RELIANCE,
RECORDING PURPOSES
OR IMPLEMENTATION.

JASON'S DELI
240 N. DENTON TAP ROAD
COPPELL, TX 75019
TOWN CENTER ADDITION, LOT 2, BLOCK 3
EXTERIOR ELEVATIONS

ISSUED FOR:	
PERMIT	
BID	
CONSTRUCTION	
RECORD	
PROJECT MANAGER	DESIGNER

JOB NO.
2024259.01

A-201