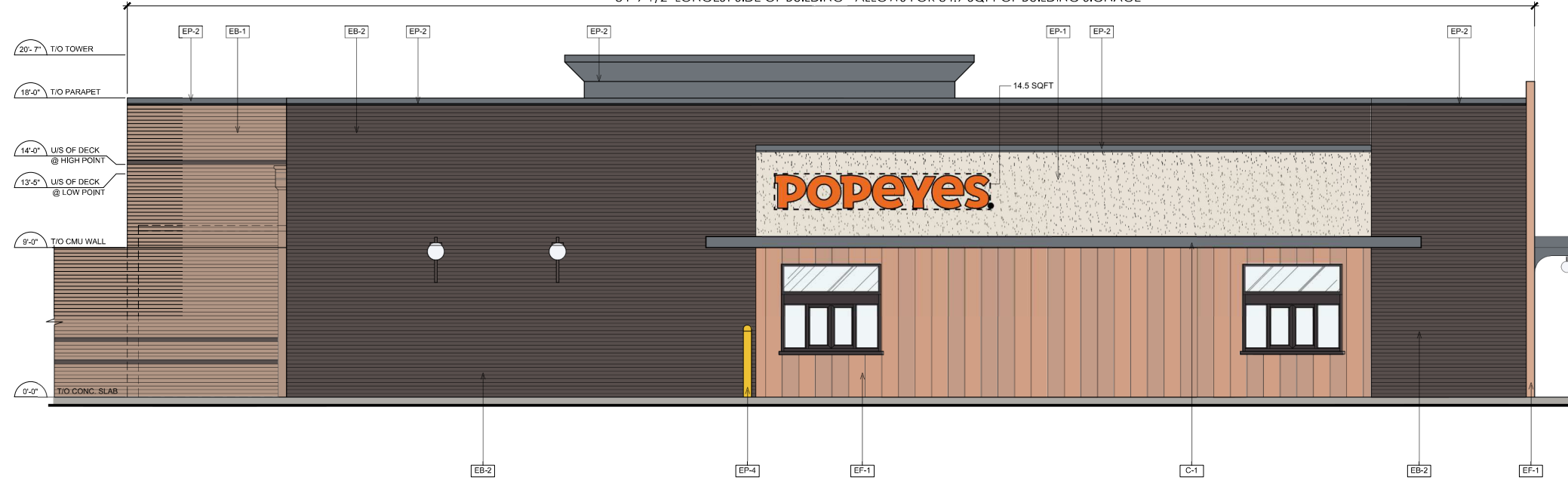
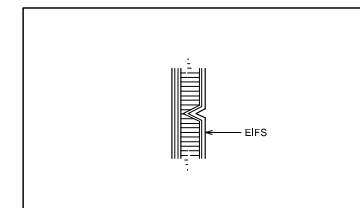


1 PROPOSED FRONT ELEVATION
SCALE: 1/4"=1'-0"

84'-9 1/2" LONGEST SIDE OF BUILDING - ALLOWS FOR 84.9 SQFT OF BUILDING SIGNAGE



2 PROPOSED DT ELEVATION
SCALE: 1/4"=1'-0"



3 SECTION DETAIL @ TYPICAL EIFS REVEAL
SCALE: 2 1/2"=1'-0"

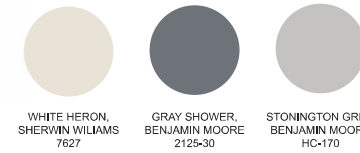
LENGTH OF BUILDING	84'-9 1/2"
ALLOWABLE SIGNAGE	84.75 SQFT
PROVIDED SIGNAGE	62.30 SQFT

GENERAL NOTES

- SEALANT / CAULKING AROUND DOOR / WINDOW FRAMES. COLOUR: TO MATCH WINDOW / DOOR FRAMES.
- THE CONTRACTOR SHALL BECOME FAMILIAR WITH AND FOLLOW ALL DRAWINGS AND SPECIFICATIONS.

SYMBOL LEGEND

1	NOTE REFERENCE REFER TO ELEVATION NOTES
FIN	FINISH TYPE



EXTERIOR FINISH SCHEDULE

TAG	MATERIAL	APPLICATION	MANUFACTURER	PRODUCT	COLOR/FINISH	DIMENSION
FINISH MATERIALS						
EF-1	EXTERIOR WOOD SIDING	FRONT FACADE EXTERIOR WALLS	NICHIIHA FIBER CEMENT	VINTAGE WOOD AWP 3030	CEDAR	17-7/8" H x 119 5/16" L
EB-1	MODULAR BRICK	FRONT OF BUILDING	ACME BRICK	MODULAR BRICK	ROYAL BIRKDALE	7 5/8" x 2 1/4" x 3 5/8"
EB-2	MODULAR BRICK	ACCENT TOWER BRICK	INTERSTATE BRICK	MODULAR BRICK	MIDNIGHT BLACK	7 5/8" x 2 1/4" x 3 5/8"
EXTERIOR PAINTS						
EP-1	EXTERIOR PAINT	MAIN WALL SURFACE	SHERWIN WILLIAMS	ULTRA SPEC EXTERIOR LOW LUSTRE (N455)	SW 7627, WHITE HERON	
EP-2	EXTERIOR PAINT	PARAPET CAP	BENJAMIN MOORE	ULTRA SPEC EXTERIOR LOW LUSTRE (N455)	2125-30 GRAY SHOWER	
EP-3	EXTERIOR PAINT	DUMPSTER WALLS, REAR DOOR	BENJAMIN MOORE	ULTRA SPEC EXTERIOR LOW LUSTRE (N455)	HC-170 STONINGTON GREY	
EP-4	METAL PAINT	BOLLARDS	BENJAMIN MOORE	COROTECH HIGH SOLIDS RAPID DRY ENAMEL	SAFETY YELLOW	
EP-5	METAL PAINT	DUMPSTER GATES AND PYLON POLE	BENJAMIN MOORE	COROTECH HIGH SOLIDS RAPID DRY ENAMEL	FACTORY FINISH BLACK	
EP-6	ANTI-GRAFFITI COAT	EXTERIOR WALLS	BENJAMIN MOORE	ALIPHATIC ACRYLIC URETHANE - GLOSS	V500-00 CLEAR	
EXTERIOR MISC.						
C-1	CANOPY - METAL	DRIVE-THRU CANOPY	BY MANUFACTURER	BY MANUFACTURER	2125-30 GRAY SHOWER	
C-2	CANOPY - METAL	BUILDING CANOPIES	BY MANUFACTURER	BY MANUFACTURER	2125-30 GRAY SHOWER	
S-1	SHUTTERS - POPPY	EXTERIOR WALLS REAR OF BUILDING	BY MANUFACTURER	BY MANUFACTURER	PROVIDED BY MANUFACTURER	
DP-1	DOOR	MAIN ENTRANCE DOORS	BY MANUFACTURER	BY MANUFACTURER	CLEAR ANODIZED	

EXTERIOR ELEVATION NOTES

- PRE-FINISHED METAL CAP FLASHING C/W DRIP.
- G.C TO PROVIDE AND INSTALL DOUBLE LAYER OF REINFORCING MESH TO MIN. 2'-0" ABOVE GRADE AT ALL EIFS LOCATIONS (TYP.) IN ORDER TO ATTAIN ABUSE RESISTANCE STUCCO SYSTEM.
- THINBRICK, COLOR: FLAGSTAFF. REFER TO POPEYES EXTERIOR FINISH SCHEDULE.
- THIN BRICK, COLOR: WHITE WASH. REFER TO POPEYES EXTERIOR FINISH SCHEDULE.
- EIFS. REFER TO POPEYES EXTERIOR FINISH SCHEDULE.
- PRE-FINISHED 'BLACK ANODIZED' ALUMINUM STOREFRONT SYSTEM WITH INSULATED GLAZING.
- EXPOSED FOUNDATION TO BE PARGED AND FREE OF IMPERFECTIONS.
- GAS UTILITY METER.
- REFER TO STRUCTURAL DRAWINGS FOR FOUNDATION WALL AND FOOTING DETAILS.
- INTERNALLY ILLUMINATED BUILDING SIGNAGE PROVIDED AND INSTALLED BY SIGN COMPANY. G.C TO PROVIDE AND INSTALL 1/2" EXTERIOR GRADE PRESSURE TREATED PLYWOOD BACKING AND ALL FINAL ELECTRICAL CONNECTION. SIGN MANUFACTURER SHALL OBTAIN STRUCTURALLY SEALED DRAWINGS AND SIGNAGE PERMITS FROM THE CITY BASED ON LOCAL REQUIREMENTS. G.C SHALL VERIFY ACTUAL LOCATION & SIZE OF SIGNS WITH SIGN MANUFACTURERS APPROVED DRAWINGS AND COORDINATE LOCATIONS OF BLOCKING AND UTILITIES. G.C TO COORDINATE WITH SIGN INSTALLER TO USE 1/8" DRILL BIT WHILE DRILLING FOR ELECTRICAL FEED LINES AND SIGNAGE FASTENERS. ALL ELEMENTS PROVIDED BY SIGNAGE FABRICATOR TO BE REVIEWED AND APPROVED BY POPEYES PRIOR TO PRODUCTION.
- NON-ILLUMINATED BUILDING SIGNAGE PROVIDED AND INSTALLED BY SIGN COMPANY. G.C TO PROVIDE AND INSTALL 1/2" EXTERIOR GRADE PRESSURE TREATED PLYWOOD BACKING. SIGN MANUFACTURER SHALL OBTAIN STRUCTURALLY SEALED DRAWINGS AND SIGNAGE PERMITS FROM THE CITY BASED ON LOCAL REQUIREMENTS. G.C SHALL VERIFY ACTUAL LOCATION & SIZE OF SIGNS WITH SIGN MANUFACTURERS APPROVED DRAWINGS AND COORDINATE LOCATIONS OF BLOCKING AND UTILITIES. G.C TO COORDINATE WITH SIGN INSTALLER TO USE 1/8" DRILL BIT WHILE DRILLING FOR ELECTRICAL FEED LINES AND SIGNAGE FASTENERS. ALL ELEMENTS PROVIDED BY SIGNAGE FABRICATOR TO BE REVIEWED AND APPROVED BY POPEYES PRIOR TO PRODUCTION.
- NICHIIHA VINTAGE WOOD, COLOR: CEDAR. REFER TO POPEYES EXTERIOR FINISH SCHEDULE.
- PROVIDE & INSTALL 6" DIAMETER STEEL PIPE BOLLARD TOP AT 4'-0" A.F.F. G.C. TO PAINT 'SAFETY YELLOW'. REFER TO POPEYES MASTER SCHEDULE.
- DRIVE-THRU WINDOW. REFER TO DRIVE-THRU WINDOW SCHEDULE ON SHEET A11.
- N/A.
- PRE-FINISHED GALVANIZED STEEL DOWNSPOUT & COLLECTOR BOX. G.C. TO COORDINATE WITH CIVIL ENGINEERS TO CONFIRM IF DOWNSPOUTS ARE SPLASHING ON CONCRETE PAD OR TIED TO THE STORM SEWER LINE. REFER TO PLUMBING DRAWINGS.
- N/A.
- DASHED LINE INDICATES T/O OF ROOF BEHIND PARAPET.
- C/T CABINET AND METER.
- LINE OF PARAPET WALLS BEYOND.
- GENERAL PURPOSE EXTERIOR LIGHTING FIXTURES.
- WALK-IN COOLER/FREEZER OUTLINE.
- N/A.
- N/A.
- ALL BASE FLASHING TO MATCH ADJACENT MATERIAL COLORS.
- HOSE BIB. G.C. TO PAINT. COLOUR TO MATCH ADJACENT STUCCO COORDINATE EXACT LOCATION WITH G.C. REFER TO MECHANICAL DRAWINGS.
- N/A.
- DECORATIVE PANELS SUPPLY AND INSTALL BY SIGN COMPANY.
- G.C TO PROVIDE CONCRETE CURB ALONG DRIVE-THRU LANE. CURB TO PROJECT 8" FROM FACE OF PANELS AND LENGTH OF CURB IS EXTENT OF FEATURE WALL.
- N/A.
- PRE-FABRICATED METAL BAND ABOVE DRIVE-THRU SUPPLY BY SIGN COMPANY AND INSTALL BY G.C. ALL CANOPIES IN WALL SUPPORT BY G.C. REFER TO STRUCTURAL DRAWINGS.
- WALL SCONCE SUPPLY AND INSTALL BY SIGN COMPANY.
- PRE-FABRICATED CANOPIES W/ PRE-WIRED RECESSED LIGHTS ABOVE DRIVE-THRU SUPPLY BY SIGN COMPANY AND INSTALL BY G.C. ALL CANOPIES IN WALL SUPPORT BY G.C. REFER TO STRUCTURAL DRAWINGS.
- VERTICAL SIMULATED WOOD SLATS. REFER TO POPEYES EXTERIOR FINISH SCHEDULE.
- WALL SCONCE LIGHTING. REFER TO ELECTRICAL SCHEDULE.
- CONCRETE SIDEWALK (BY G.C.) REFER TO SITE PLAN.
- HORIZONTAL WOOD GRAIN ENTRANCE CANOPY W/ TEAL VERTICAL & HORIZONTAL SUPPORTS SUPPLY BY SIGN COMPANY AND INSTALL BY G.C. PRE-WIRED LED LIGHT GLOBE FIXTURE.
- N/A.
- PROVIDE EXTERIOR-GRADE PLASTER OVER CMU ENCLOSURE; PAINT PLASTER P-1
- CMU ENCLOSURE WITH PLASTER APPLIED TO EXTERIOR OF ENCLOSURE WITH A SMOOTH CONTINUOUS SURFACE. PAINT PLASTER EP-1. REFER TO A1 FOR ENCLOSURE DIMENSIONS.

ISSUE TABLE

No.	Date (mm/dd/yy)	Description
01	01.17.2023	PLANNING REVIEW

REVISIONS

No.	Date	Description
-----	------	-------------

DRAWINGS REVISED AS PER DESIGN BULLETIN

No.	Date	Description
-----	------	-------------



THIS DRAWING IS OWNED BY OR LICENSED FOR USE BY POPEYES LOUISIANA KITCHEN (OR ITS AFFILIATED OR RELATED COMPANIES) AND MAY NOT BE REPRODUCED, USED, DOWNLOADED, RESUMED, PUBLISHED OR TRANSMITTED IN ANY FORM OR BY ANY MEANS, EXCEPT WITH THE PRIOR WRITTEN CONSENT OF POPEYES LOUISIANA KITCHEN. COPYRIGHT INFRINGEMENT IS A VIOLATION OF FEDERAL LAW SUBJECT TO CRIMINAL AND CIVIL PENALTIES.

THE CONTRACTOR IS TO VERIFY ALL DIMENSIONS AND CONDITIONS ON THE PROJECT AND TO REPORT ANY DISCREPANCIES TO THE POPEYES LOUISIANA KITCHEN REPRESENTATIVE PRIOR TO COMMENCING WORK. THESE DRAWINGS ARE NOT TO BE USED FOR CONSTRUCTION PURPOSES UNLESS INDICATED BY POPEYES LOUISIANA KITCHEN AS ISSUED FOR CONSTRUCTION.

NOT FOR REGULATORY APPROVAL, PERMITTING, or CONSTRUCTION
GREG RYDEN, ARCHITECT
DATE: 02/07/2023

Company Logo
RYDEN ARCHITECTURE
architecture | planning
909 wkefield drive
HOUSTON, TEXAS 77018
713.993.6690 (c)
contact: greg.ryden.aia

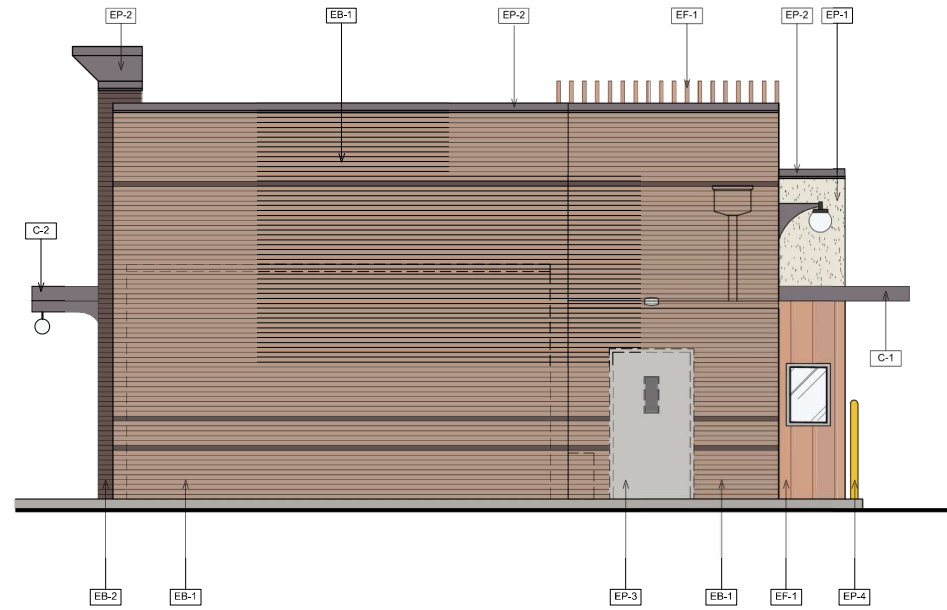


Store Type
US 2124 PROTOTYPE
2124-21

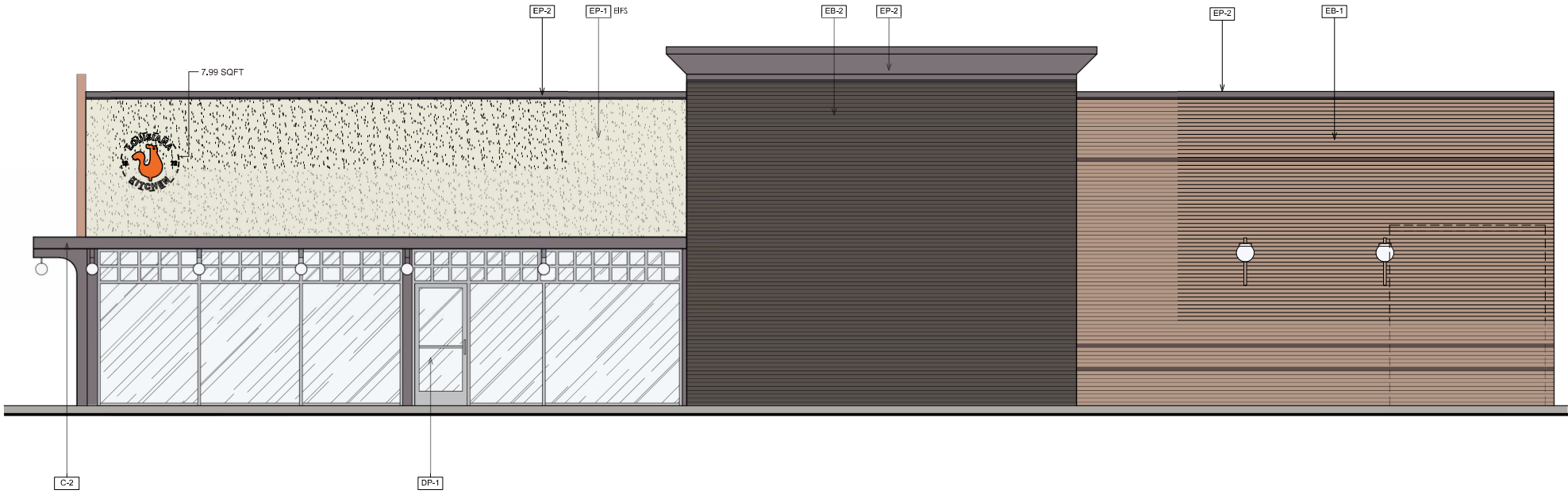
Location
401 NORTHWESTERN DR.
COPPELL, TEXAS
75019

Drawing Title
EXTERIOR ELEVATIONS

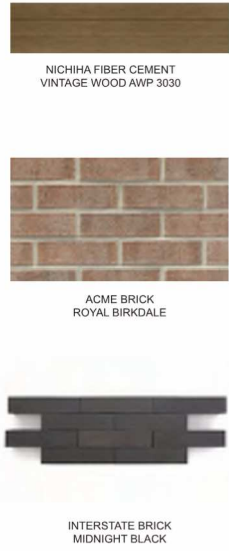
Drawn	GA	Checked	GR
Scale		Date	FEB 2023
Project No.	TBD	Drawing No.	A5.0



1 PROPOSED REAR ELEVATION
SCALE: 1/4"=1'-0"



2 PROPOSED SIDE ELEVATION
SCALE: 1/4"=1'-0"



EXTERIOR FINISH SCHEDULE						
TAG	MATERIAL	APPLICATION	MANUFACTURER	PRODUCT	COLOR/FINISH	DIMENSION
FINISH MATERIALS						
EF-1	EXTERIOR WOOD SIDING	FRONT FACADE EXTERIOR WALLS	NICHHA FIBER CEMENT	VINTAGE WOOD AWP 3030	CEDAR	17-7/8" H x 119 5/16" L
EB-1	MODULAR BRICK	FRONT OF BUILDING	ACME BRICK	MODULAR BRICK	ROYAL BIRKDALE	7 5/8" x 2 1/4" x 3 5/8"
EB-2	MODULAR BRICK	ACCENT TOWER BRICK	INTERSTATE BRICK	MODULAR BRICK	MIDNIGHT BLACK	7 5/8" x 2 1/4" x 3 5/8"
EXTERIOR PAINTS						
EP-1	EXTERIOR PAINT	MAIN WALL SURFACE	SHERWIN WILLIAMS	ULTRA SPEC EXTERIOR LOW LUSTRE (N455)	SW 7627, WHITE HERON	
EP-2	EXTERIOR PAINT	PARAPET CAP	BENJAMIN MOORE	ULTRA SPEC EXTERIOR LOW LUSTRE (N455)	2125-30 GRAY SHOWER	
EP-3	EXTERIOR PAINT	DUMPSTER WALLS, REAR DOOR	BENJAMIN MOORE	ULTRA SPEC EXTERIOR LOW LUSTRE (N455)	HC-170 STONINGTON GREY	
EP-4	METAL PAINT	BOLLARDS	BENJAMIN MOORE	COROTECH HIGH SOLIDS RAPID DRY ENAMEL	SAFETY YELLOW	
EP-5	METAL PAINT	DUMPSTER GATES AND PYLON POLE	BENJAMIN MOORE	COROTECH HIGH SOLIDS RAPID DRY ENAMEL	FACTORY FINISH BLACK	
EP-6	ANTI-GRAFFITI COAT	EXTERIOR WALLS	BENJAMIN MOORE	ALIPHATIC ACRYLIC URETHANE - GLOSS	V500-00 CLEAR	
EXTERIOR MISC.						
C-1	CANOPY - METAL	DRIVE-THRU CANOPY	BY MANUFACTURER	BY MANUFACTURER	2125-30 GRAY SHOWER	
C-2	CANOPY - METAL	BUILDING CANOPIES	BY MANUFACTURER	BY MANUFACTURER	2125-30 GRAY SHOWER	
S-1	SHUTTERS - POPPY	EXTERIOR WALLS REAR OF BUILDING	BY MANUFACTURER	BY MANUFACTURER	PROVIDED BY MANUFACTURER	
DP-1	DOOR	MAIN ENTRANCE DOORS	BY MANUFACTURER	BY MANUFACTURER	CLEAR ANODIZED	



EXTERIOR ELEVATION NOTES

- PRE-FINISHED METAL CAP FLASHING C/W DRIP.
- G.C TO PROVIDE AND INSTALL DOUBLE LAYER OF REINFORCING MESH TO MIN. 2'-0" ABOVE GRADE AT ALL EIFS LOCATIONS (TYP.) IN ORDER TO ATTAIN ABUSE RESISTANCE STUCCO SYSTEM.
- THINBRICK, COLOR: FLAGSTAFF. REFER TO POPEYES EXTERIOR FINISH SCHEDULE.
- THIN BRICK, COLOR: WHITE WASH. REFER TO POPEYES EXTERIOR FINISH SCHEDULE.
- EIFS. REFER TO POPEYES EXTERIOR FINISH SCHEDULE.
- PRE-FINISHED 'BLACK ANODIZED' ALUMINUM STOREFRONT SYSTEM WITH INSULATED GLAZING.
- EXPOSED FOUNDATION TO BE PARGED AND FREE OF IMPERFECTIONS.
- GAS UTILITY METER.
- REFER TO STRUCTURAL DRAWINGS FOR FOUNDATION WALL AND FOOTING DETAILS.
- INTERNALLY ILLUMINATED BUILDING SIGNAGE PROVIDED AND INSTALLED BY SIGN COMPANY. G.C TO PROVIDE AND INSTALL 1/2" EXTERIOR GRADE PRESSURE TREATED PLYWOOD BACKING AND ALL FINAL ELECTRICAL CONNECTION. SIGN MANUFACTURER SHALL OBTAIN STRUCTURALLY SEALED DRAWINGS AND SIGNAGE PERMITS FROM THE CITY BASED ON LOCAL REQUIREMENTS. G.C SHALL VERIFY ACTUAL LOCATION & SIZE OF SIGNS WITH SIGN MANUFACTURER'S APPROVED DRAWINGS AND COORDINATE LOCATIONS OF BLOCKING AND UTILITIES. G.C TO COORDINATE WITH SIGN INSTALLER TO USE 1/8" DRILL BIT WHILE DRILLING FOR ELECTRICAL FEED LINES AND SIGNAGE FASTENERS. ALL ELEMENTS PROVIDED BY SIGNAGE FABRICATOR TO BE REVIEWED AND APPROVED BY POPEYES PRIOR TO PRODUCTION.
- NON-ILLUMINATED BUILDING SIGNAGE PROVIDED AND INSTALLED BY SIGN COMPANY. G.C TO PROVIDE AND INSTALL 1/2" EXTERIOR GRADE PRESSURE TREATED PLYWOOD BACKING. SIGN MANUFACTURER SHALL OBTAIN STRUCTURALLY SEALED DRAWINGS AND SIGNAGE PERMITS FROM THE CITY BASED ON LOCAL REQUIREMENTS. G.C SHALL VERIFY ACTUAL LOCATION & SIZE OF SIGNS WITH SIGN MANUFACTURER'S APPROVED DRAWINGS AND COORDINATE LOCATIONS OF BLOCKING AND UTILITIES. G.C TO COORDINATE WITH SIGN INSTALLER TO USE 1/8" DRILL BIT WHILE DRILLING FOR ELECTRICAL FEED LINES AND SIGNAGE FASTENERS. ALL ELEMENTS PROVIDED BY SIGNAGE FABRICATOR TO BE REVIEWED AND APPROVED BY POPEYES PRIOR TO PRODUCTION.
- NICHHA VINTAGE WOOD, COLOR: CEDAR. REFER TO POPEYES EXTERIOR FINISH SCHEDULE.
- PROVIDE & INSTALL 6" DIAMETER STEEL PIPE BOLLARD TOP AT 4'-0" A.F.F. G.C. TO PAINT 'SAFETY YELLOW'. REFER TO POPEYES MASTER SCHEDULE.
- DRIVE-THRU WINDOW. REFER TO DRIVE-THRU WINDOW SCHEDULE ON SHEET A11.
- N/A.
- PRE-FINISHED GALVANIZED STEEL DOWNSPOUT & COLLECTOR BOX. G.C. TO COORDINATE WITH CIVIL ENGINEERS TO CONFIRM IF DOWNSPOUTS ARE SPLASHING ON CONCRETE PAD OR TIED TO THE STORM SEWER LINE. REFER TO PLUMBING DRAWINGS.
- N/A.
- DASHED LINE INDICATES T/O OF ROOF BEHIND PARAPET.
- C/T CABINET AND METER.
- LINE OF PARAPET WALLS BEYOND.
- GENERAL PURPOSE EXTERIOR LIGHTING FIXTURES.
- WALK-IN COOLER/FREEZER OUTLINE.
- N/A.
- N/A.
- ALL BASE FLASHING TO MATCH ADJACENT MATERIAL COLORS.
- HOSE BIB. G.C. TO PAINT, COLOUR TO MATCH ADJACENT STUCCO COORDINATE EXACT LOCATION WITH G.C. REFER TO MECHANICAL DRAWINGS.
- N/A.
- DECORATIVE PANELS SUPPLY AND INSTALL BY SIGN COMPANY.
- G.C TO PROVIDE CONCRETE CURB ALONG DRIVE-THRU LANE. CURB TO PROJECT 8" FROM FACE OF PANELS AND LENGTH OF CURB IS EXTENT OF FEATURE WALL.
- N/A.
- PRE-FABRICATED METAL BAND ABOVE DRIVE-THRU SUPPLY BY SIGN COMPANY AND INSTALL BY G.C. ALL CANOPIES IN WALL SUPPORT BY G.C. REFER TO STRUCTURAL DRAWINGS.
- WALL SCOCNE SUPPLY AND INSTALL BY SIGN COMPANY.
- PRE-FABRICATED CANOPIES W/ PRE-WIRED RECESSED LIGHTS ABOVE DRIVE-THRU SUPPLY BY SIGN COMPANY AND INSTALL BY G.C. ALL CANOPIES IN WALL SUPPORT BY G.C. REFER TO STRUCTURAL DRAWINGS.
- VERTICAL SIMULATED WOOD SLATS. REFER TO POPEYES EXTERIOR FINISH SCHEDULE.
- WALL SCOCNE LIGHTING. REFER TO ELECTRICAL SCHEDULE.
- CONCRETE SIDEWALK (BY G.C.) REFER TO SITE PLAN.
- HORIZONTAL WOOD GRAIN ENTRANCE CANOPY W/ TEAL VERTICAL & HORIZONTAL SUPPORTS SUPPLY BY SIGN COMPANY AND INSTALL BY G.C. PRE-WIRED LED LIGHT GLOBE FIXTURE.
- N/A.
- PROVIDE EXTERIOR-GRADE PLASTER OVER CMU ENCLOSURE; PAINT PLASTER P-1
- CMU ENCLOSURE WITH PLASTER APPLIED TO EXTERIOR OF ENCLOSURE WITH A SMOOTH CONTINUOUS SURFACE. PAINT PLASTER EP-1. REFER TO A1 FOR ENCLOSURE DIMENSIONS.

MATERIAL % PER ELEVATION				
	BRICK	EIFS	WOOD-LOOK PANEL	GLAZING
FRONT	15%	45%	5%	35%
DT	56%	17%	24%	3%
REAR	87%	3%	10%	0%
SIDE	65%	15%	0%	20%
TOTAL	56%	20%	10%	14%

GENERAL NOTES

- SEALANT / CAULKING AROUND DOOR / WINDOW FRAMES. COLOUR: TO MATCH WINDOW / DOOR FRAMES.
- THE CONTRACTOR SHALL BECOME FAMILIAR WITH AND FOLLOW ALL DRAWINGS AND SPECIFICATIONS.

ISSUE TABLE		
No.	Date (mm/dd/yy)	Description
01	01.17.2023	PLANNING REVIEW

REVISIONS		
No.	Date	Description

DRAWINGS REVISED AS PER DESIGN BULLETIN		
No.	Date	Description

PROJECT NORTH

THIS DRAWING IS OWNED BY OR LICENSED FOR USE BY POPEYES LOUISIANA KITCHEN (OR ITS AFFILIATED OR RELATED COMPANIES) AND MAY NOT BE REPRODUCED, USED, DOWNLOADED, RESUMED, PUBLISHED OR TRANSMITTED IN ANY FORM OR BY ANY MEANS, EXCEPT WITH THE PRIOR WRITTEN CONSENT OF POPEYES LOUISIANA KITCHEN. COPYRIGHT INFRINGEMENT IS A VIOLATION OF FEDERAL LAW SUBJECT TO CRIMINAL AND CIVIL PENALTIES.

THE CONTRACTOR IS TO VERIFY ALL DIMENSIONS AND CONDITIONS ON THE PROJECT AND TO REPORT ANY DISCREPANCIES TO THE POPEYES LOUISIANA KITCHEN REPRESENTATIVE PRIOR TO COMMENCING WORK. THESE DRAWINGS ARE NOT TO BE USED FOR CONSTRUCTION PURPOSES UNLESS INDICATED BY POPEYES LOUISIANA KITCHEN AS ISSUED FOR CONSTRUCTION.

NOT FOR REGULATORY APPROVAL,
PERMITTING, OR CONSTRUCTION
GREG RYDEN, ARCHITECT
DATE: 02/07/2023

Company Logo

RYDEN ARCHITECTURE
architecture | planning

909 wakefield drive
HOUSTON, TEXAS 77018
713.993.6690 (o)
contact: greg.ryden.aia

Project

POPEYES

Store Type

US 2124 PROTOTYPE
2124-21

Location

401 NORTHWESTERN DR.
COPPELL, TEXAS
75019

Drawing Title

EXTERIOR ELEVATIONS

Drawn	GA	Checked	GR
Scale		Date	FEB 2023
Project No.	TBD	Drawing No.	A5.1

POPEYES LOUISIANA KITCHEN MODEL 2124, 401 NORTHWESTERN DRIVE, COPPELL, TEXAS 75019; 2124 PROTOTYPE DOCUMENTS (FEB 07, 2023 STORE NO. XXXXX)