

IRRIGATION NOTES

ALL COMMON AREAS, EXCEPT WHERE NOTED, WILL BE 100% COVERED WITH AN AUTOMATIC IRRIGATION SYSTEM.

IRRIGATION INSTALLATION WILL BE COORDINATED WITH LANDSCAPE PLANTING PLANS AND SITE CONDITIONS TO PROVIDE COMPLETE COVERAGE WITH MINIMUM OVERSPRAY.

CONTRACTOR IS TO CONTACT APPROPRIATE AUTHORITIES AND LOCATE ALL UTILITIES PRIOR TO CONSTRUCTION.

MAINTENANCE PROVISION

ALL COMMON AREAS WILL BE MAINTAINED BY KING'S LAKE HOA.

GENERAL NOTES

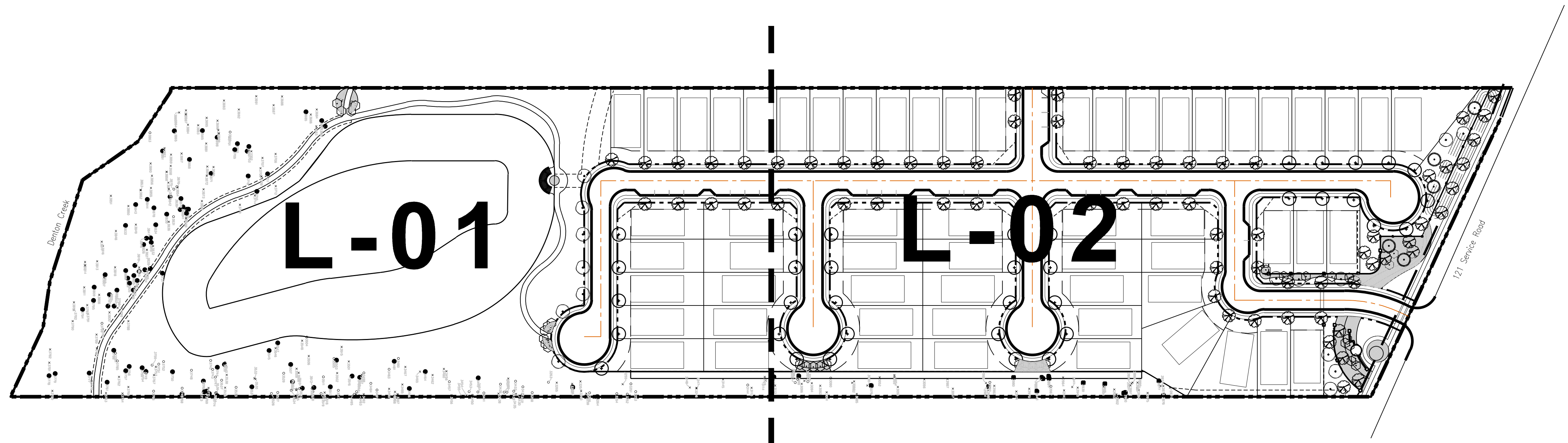
Sidewalks in the front and sides of all homes shall be 5 feet wide and installed at the time the home is built by the homebuilder.

Sidewalks along streets within common areas shall be 5 feet wide and installed at the time of development by the developer.

All trails shown in these plans will be built by the Developer unless noted otherwise.

All trees shown on this plan are 3 inch DBH with the exception of those shown on the S.H.121 side of the 8 foot masonry screening wall, which shall be 4 inch DBH.

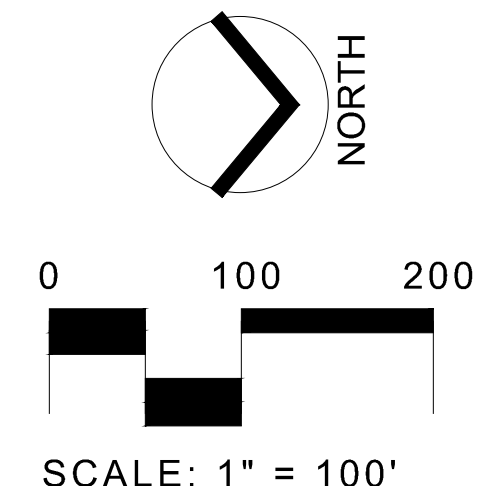
All existing trees shown are for reference only. See tree survey for additional information.



PLANTING NOTES						
SYM.	BOTANICAL/COMMON NAME	CAL.	HT.	SPREAD	BALL	REMARKS
TREES						
QUE SHU	QUERCUS SHUMARDII / RED OAK	3"-3 1/2"	12"-14"	6'-8'	65 GAL.	FULL & WATCHED, STRAIGHT TRUNK
QUE VR	QUERCUS VIRGINIANA / LIVE OAK	3"-3 1/2"	11"-12"	6'-8'	65 GAL.	FULL & WATCHED, STRAIGHT TRUNK
QUE MAC	QUERCUS MACROCARPA / BUR OAK	3"-3 1/2"	11"-12"	6'-8'	65 GAL.	FULL & WATCHED, STRAIGHT TRUNK
ULM CRA	ULMUS CRASSIFOLIA / CEDAR ELM	3"-3 1/2"	11"-12"	6'-8'	65 GAL.	FULL & WATCHED, STRAIGHT TRUNK
CER CANW	CERCIS CANADENSIS / WHITE RED BUD	2"-2 1/2"	6"-7"	5'-6"	30 GAL.	FULL & WATCHED, MULTI TRUNK, 3 TRUNK MIN.
WAS HAW	CRATAEGUS PHAENOCOPRUM / WASHINGTON Hawthorn	2"-2 1/2"	6"-7"	5'-6"	30 GAL.	FULL & WATCHED, MULTI TRUNK, 3 TRUNK MIN.
YAH HOL	ILEX VOMITORIA / YAWON HOLLY	2"-2 1/2"	7"-9"	5'-6"	30 GAL.	FULL & WATCHED, MULTI TRUNK, 3 TRUNK MIN.

SHRUBS/GROUNDCOVER /GRASSES						
SYM.	BOTANICAL/COMMON NAME	CAL.	HT.	SPREAD	BALL	REMARKS
LEU FRU	LEUCOPHYLLUM FRUTESCENS / GREEN GLOVE TEXAS SAGE	-	24"-26"	20"-24"	3 GAL.	36" O.C., TRANG SPACED (OR AS SHOWN ON PLANS)
YUC ALO	YUCCA ALATA / SPIDER PLANT	-	24"-26"	20"-24"	3 GAL.	24" O.C., TRANG SPACED (OR AS SHOWN ON PLANS)
MIN ORS	ORNITHOGALON / JAPANESE	-	-	-	4" POTS	12" O.C., TRANG SPACED (OR AS SHOWN ON PLANS)
PEN ALO	PENNISETUM ALPESICUM / PENNANT	-	10"-12"	10"-12"	1 GAL.	18" O.C., TRANG SPACED (OR AS SHOWN ON PLANS)
WOOD UL	WOOLY BLUEGRASS	-	10"-12"	-	4" POTS	12" O.C., TRANG SPACED (OR AS SHOWN ON PLANS)
HOS HRB	CALYPSO GARDENS / HOSE	-	10"-12"	10"-12"	3 GAL.	24" O.C., TRANG SPACED (OR AS SHOWN ON PLANS)
NAN DNA	NANDESTRUM DOMESTICUM / NANDESTRUM	-	20"-30"	20"-24"	3 GAL.	36" O.C., TRANG SPACED (OR AS SHOWN ON PLANS)
SPI REA	SPIREA SPP. / SPIREA	-	24"-30"	20"-24"	3 GAL.	24" O.C., TRANG SPACED (OR AS SHOWN ON PLANS)

SYM.	BOTANICAL/COMMON NAME	CAL.	HT.	SPREAD	BALL	REMARKS
BUC DAC	BUCHLOE DACTYLOIDES / BUTALOGRASS	-	-	-	500	500
SEA COL	SEASONAL COLOR, INSTALLED AS APPROPRIATE TO SEASON, APPROVED BY OWNERS REPRESENTATIVE	-	FULL	FULL	4" POTS	9" O.C., TRANG SPACED
LAWN		-	-	-	-	HYDROSEED



DEVELOPER:
AMALGAMATED DEVELOPEMENT, LP
 5055 KELLER SPRINGS, SUITE 170
 ADDISON, TX 75006
 T 214-4914-9809

PRELIMINARY
 FOR REVIEW ONLY
 These documents are for design review and not intended for construction, bidding, or permit purposes. They were prepared by or under the supervision of:
BRIAN D. ADAMS
 Registered Landscape Architect
 State of Texas #1676
 April 16, 2012

CALLISON
 1445 ROSS AVE., STE 2600
 DALLAS, TX 75202
 T 214 446 0950
 F 214 446 0951
 www.callison.com

EASTHAVEN
 PD-264 RBN-5
 Coppell, Texas

ISSUED / REVISED	DATE
Preliminary Submittal	04/17/13
DRG Submittal	05/02/13
1st P&Z Submittal	05/07/13
1st Council Submittal	05/30/13

FOR REVIEW PURPOSES ONLY
 LANDSCAPE KEY PLAN

L-00

SYM . LEGEND QUANTITY

⊕	Live Oak	31
○	Bur Oak	8
⊗	Red Oak	60
⊙	Cedar Elm	5
⬡	Ornamentals	23
✕	Existing Tree	Per Tree Survey

Notes:
 1. Quantity shown are per sheet.
 2. Existing trees shown are for reference only. See tree survey for additional information.

DEVELOPER:
AMALGAMATED DEVELOPMENT, LP
 5055 KELLER SPRINGS, SUITE 170
 ADDISON, TX 75006
 T 214-914-9809

PRELIMINARY
 FOR REVIEW ONLY
 These documents are for design review and not intended for construction, bidding, or permit purposes. They were prepared by or under the supervision of:
BRIAN D. ADAMS
 Registered Landscape Architect
 State of Texas #1676
 April 16, 2012

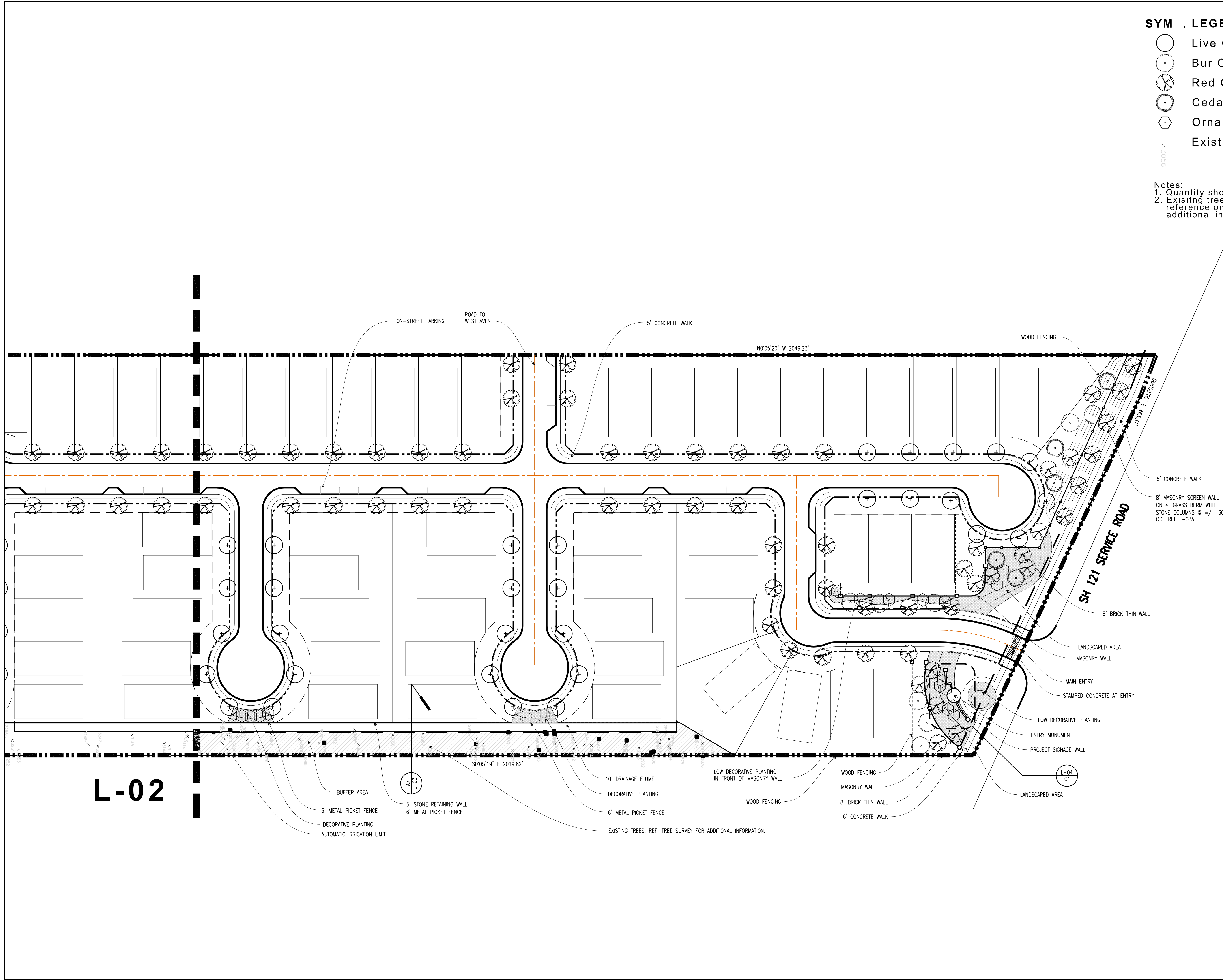
CALLISON
 1445 ROSS AVE., STE 2600
 DALLAS, TX 75202
 T 214 446 0950
 F 214 446 0951
 www.callison.com

EASTHAVEN
 PD-264 RBN-5
 Coppell, Texas

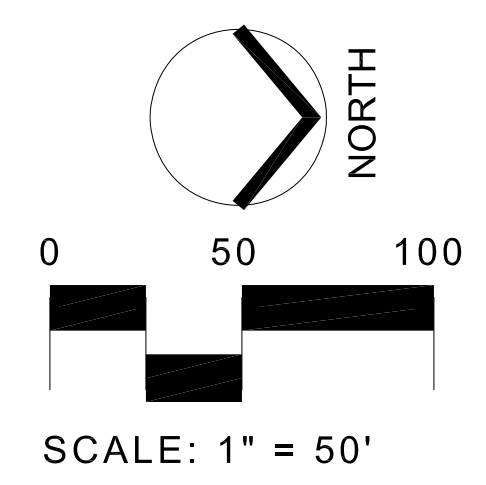
ISSUED / REVISED	DATE
Preliminary Submittal	04/17/13
DRC Submittal	05/02/13
1st P&Z Submittal	05/07/13
1st Council Submittal	05/30/13

FOR REVIEW PURPOSES ONLY
 LANDSCAPE PLAN

L-01



L-02



SCALE: 1" = 50'

SYM	LEGEND	QUANTITY
+	Live Oak	5
○	Bur Oak	7
⊗	Red Oak	9
⬡	Ornamentals	6
◇	Bench (6')	3
9500 X	Existing Tree	Per Tree Survey

Notes:
 1. Quantity shown are per sheet.
 2. Existing trees shown are for reference only. See tree survey for additional information.

DEVELOPER:
AMALGAMATED DEVELOPMENT, LP
 5055 KELLER SPRINGS, SUITE 170
 ADDISON, TX 75006
 T 214-914-9809

PRELIMINARY
 FOR REVIEW ONLY
 These documents are for design review and not intended for construction, bidding, or permit purposes. They were prepared by or under the supervision of:
BRIAN D. ADAMS
 Registered Landscape Architect
 State of Texas #1676
 April 16, 2012

CALLISON
 1445 ROSS AVE., STE 2600
 DALLAS, TX 75202
 T 214 446 0950
 F 214 446 0951
 www.callison.com

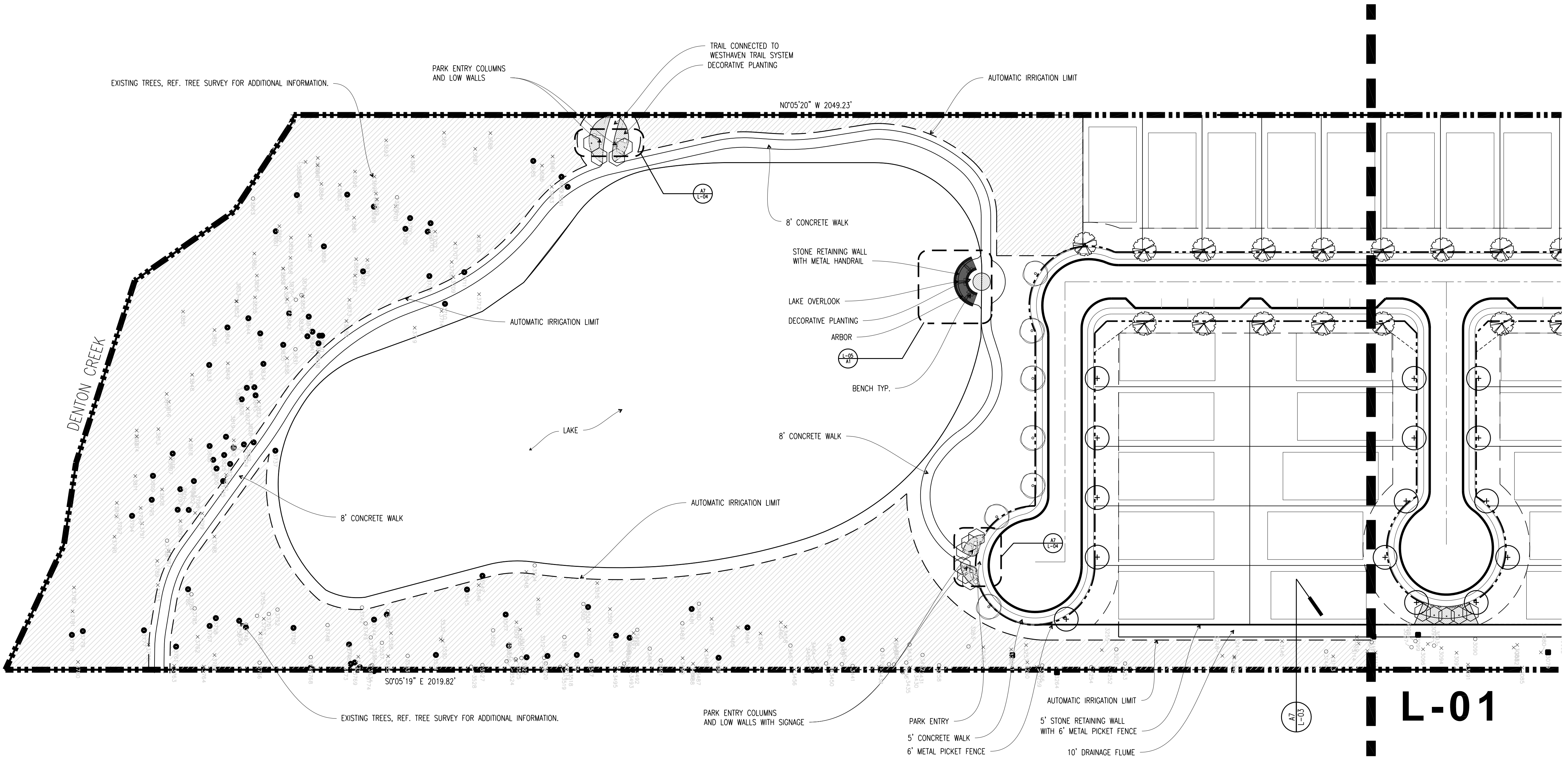
EASTHAVEN
 PD-264 RBN-5
 Coppell, Texas

213849.00

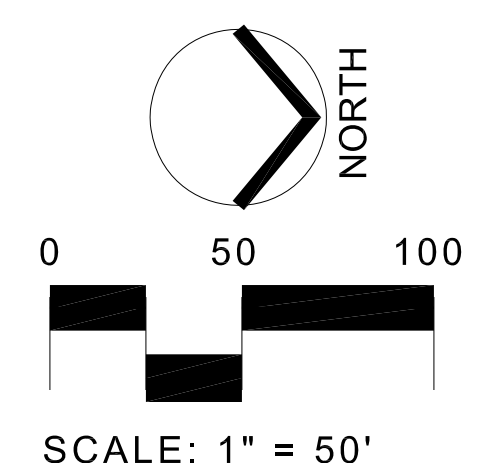
ISSUED / REVISED	DATE
Preliminary Submittal	04/17/13
DRC Submittal	05/02/13
1st P&Z Submittal	05/07/13
1st Council Submittal	05/30/13

FOR REVIEW
 PURPOSES ONLY
 LANDSCAPE PLAN

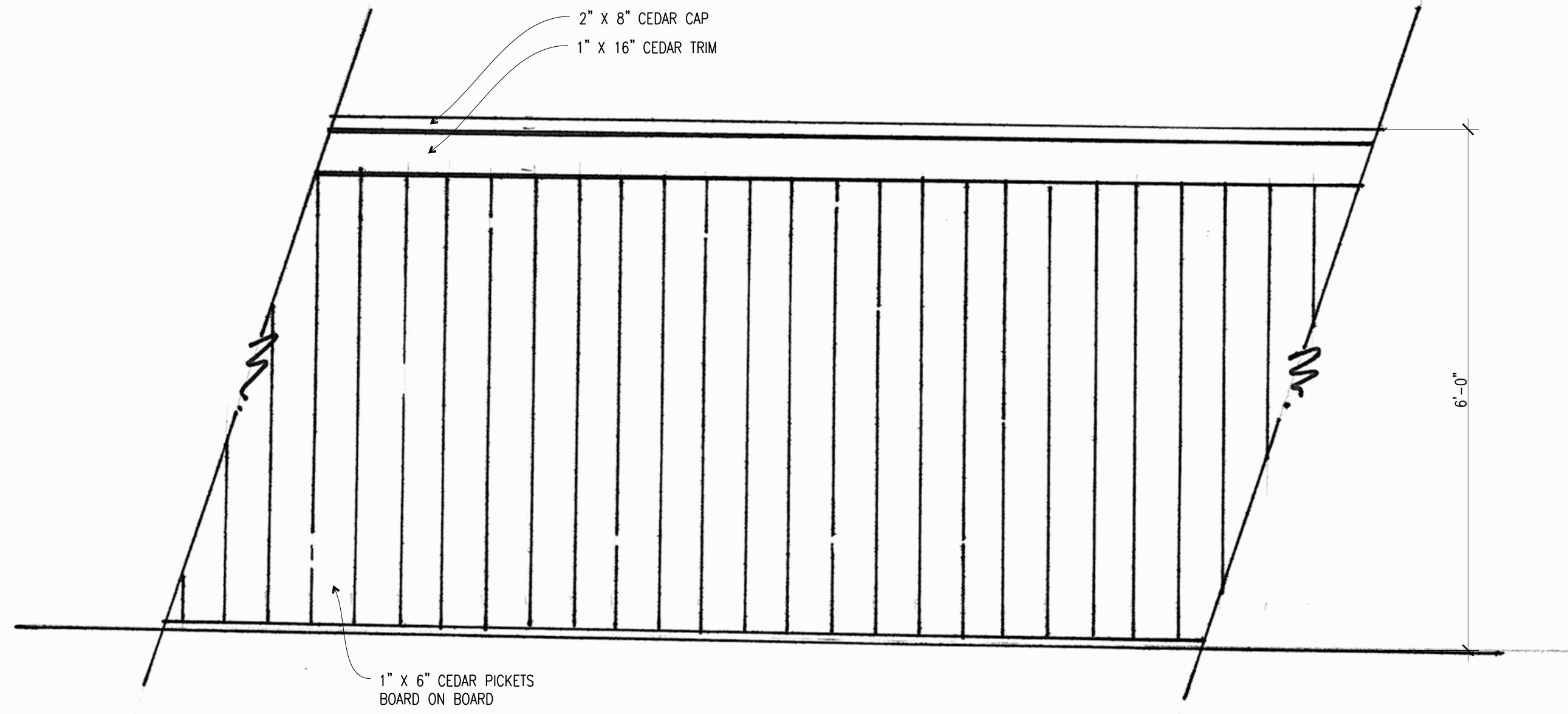
L-02



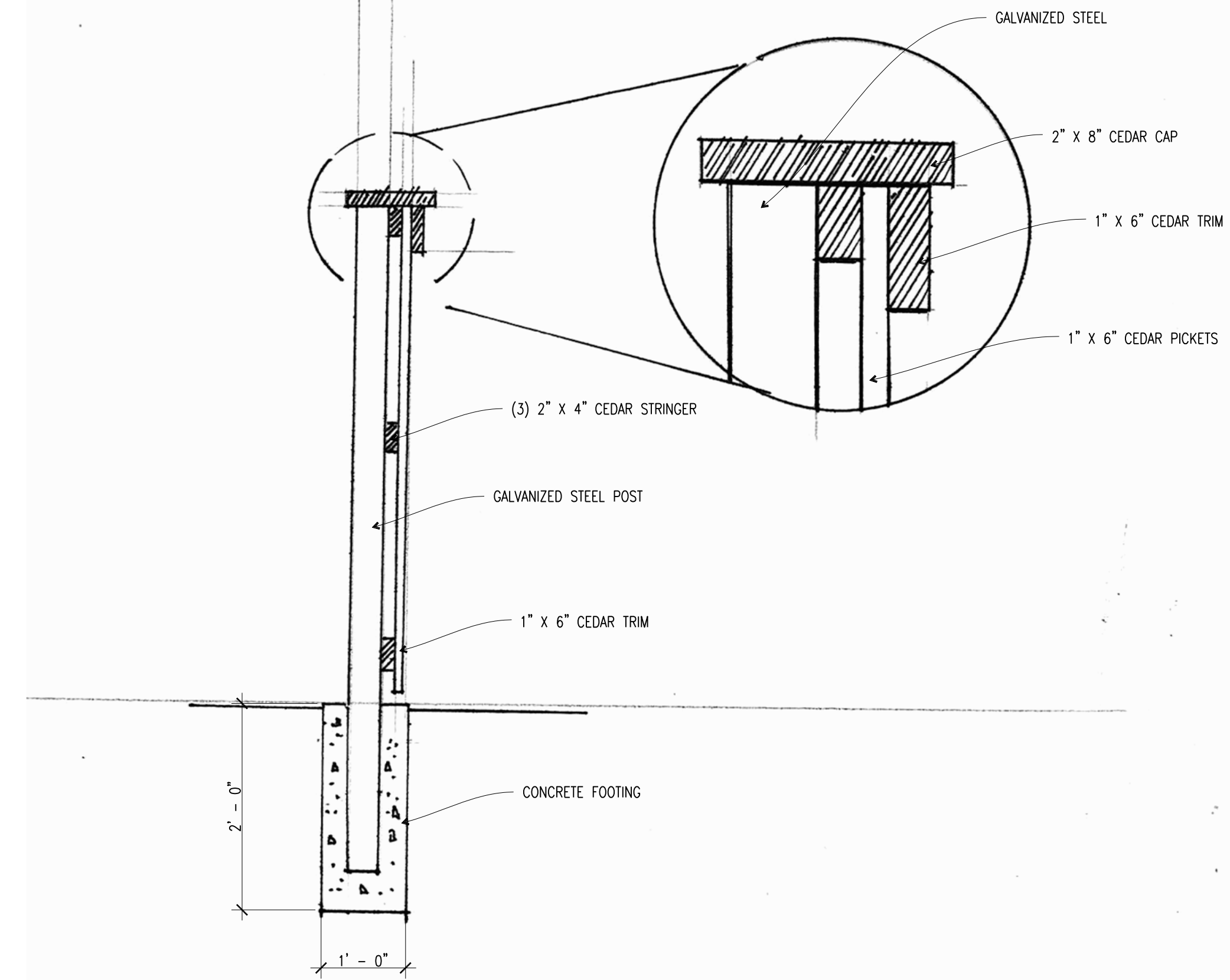
L-01



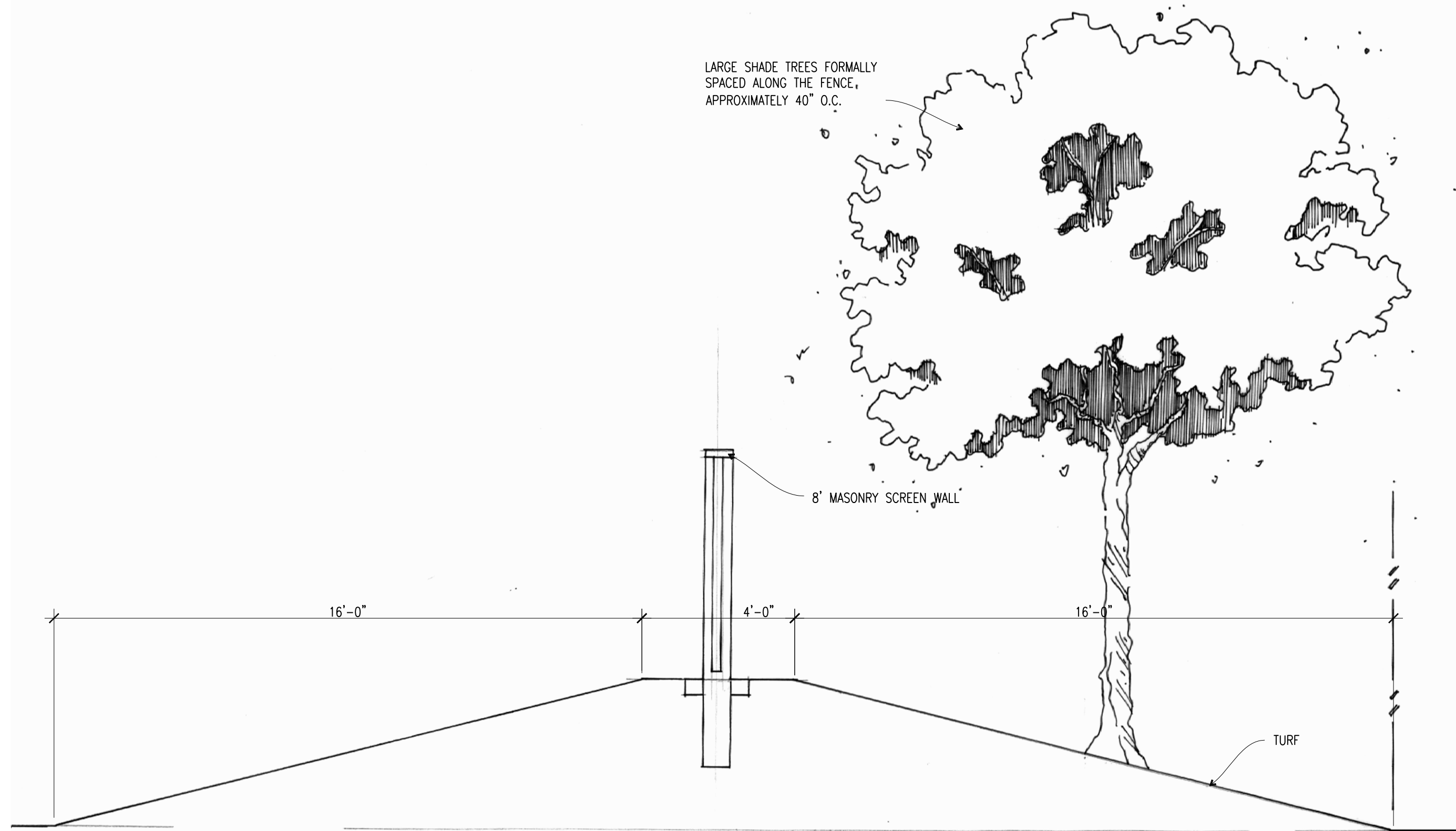
SCALE: 1" = 50'



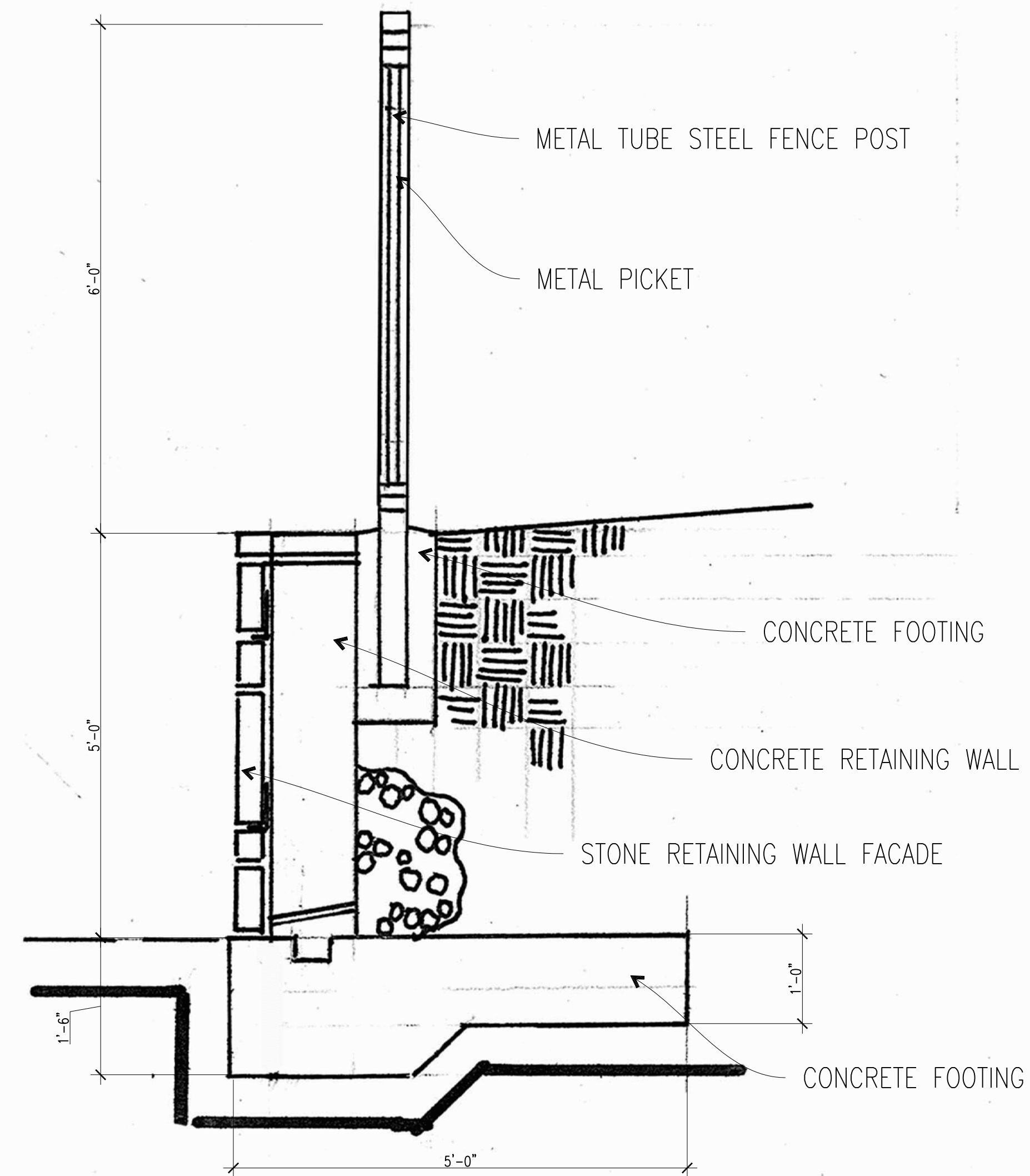
D1 CEDAR FENCE ELEVATION
3/4"=1'-0"



D7 CEDAR FENCE SECTION
3/4"=1'-0"



A1 ENTRY MONUMENT ELEVATION
3/8"=1'-0"



A7 RETAINING WALL AND FENCE SECTION
3/4"=1'-0"

DEVELOPER:
AMALGAMATED DEVELOPMENT, LP
5055 KELLER SPRINGS, SUITE 170
ADDISON, TX 75006
T 214-914-9809

PRELIMINARY
FOR REVIEW ONLY
These documents are for design review and not intended for construction, bidding, or permit purposes. They were prepared by or under the supervision of:
BRIAN D. ADAMS
Registered Landscape Architect
State of Texas #1676
April 16, 2012

CALLISON
1445 ROSS AVE., STE 2600
DALLAS, TX 75202
T 214 446 0950
F 214 446 0951
www.callison.com

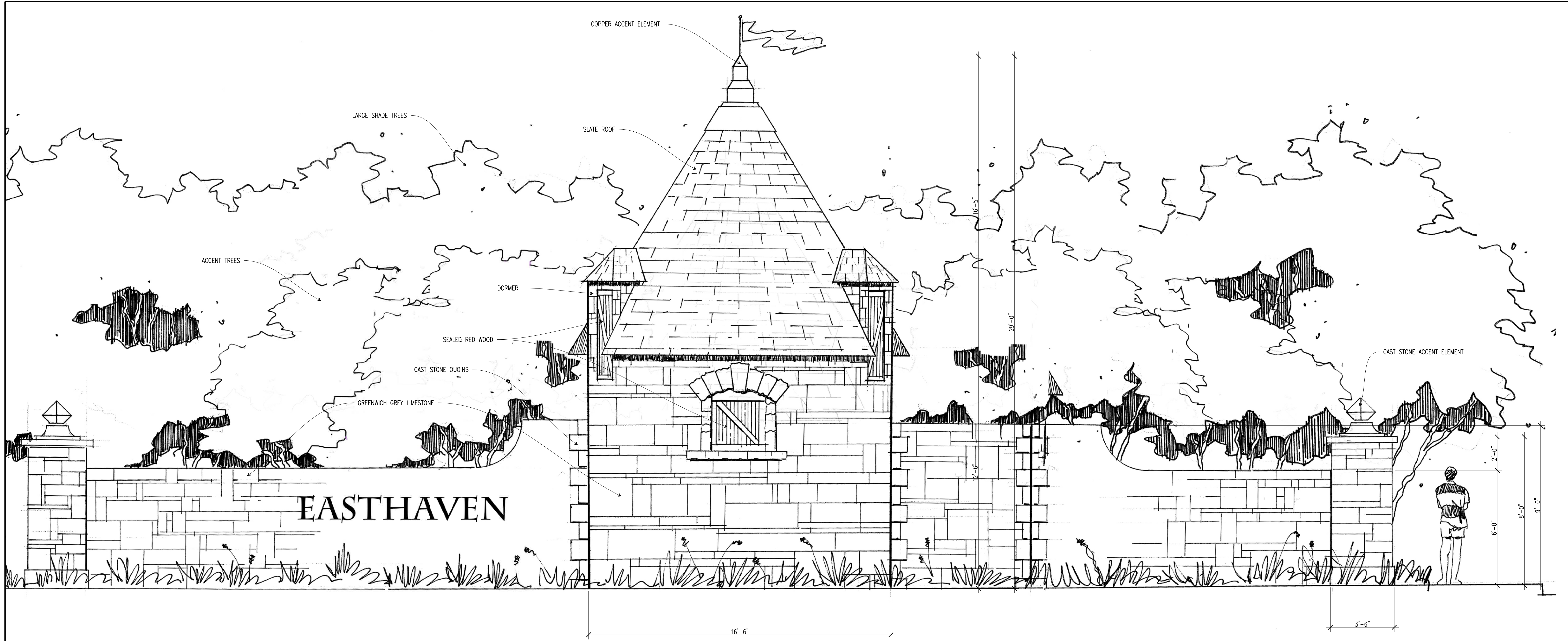
EASTHAVEN
PD-264 RBN-5
Coppell, Texas

213849.00

ISSUED / REVISED	DATE
Preliminary Submittal	04/17/13
DRC Submittal	05/02/13
1st P&Z Submittal	05/07/13
1st Council Submittal	05/30/13

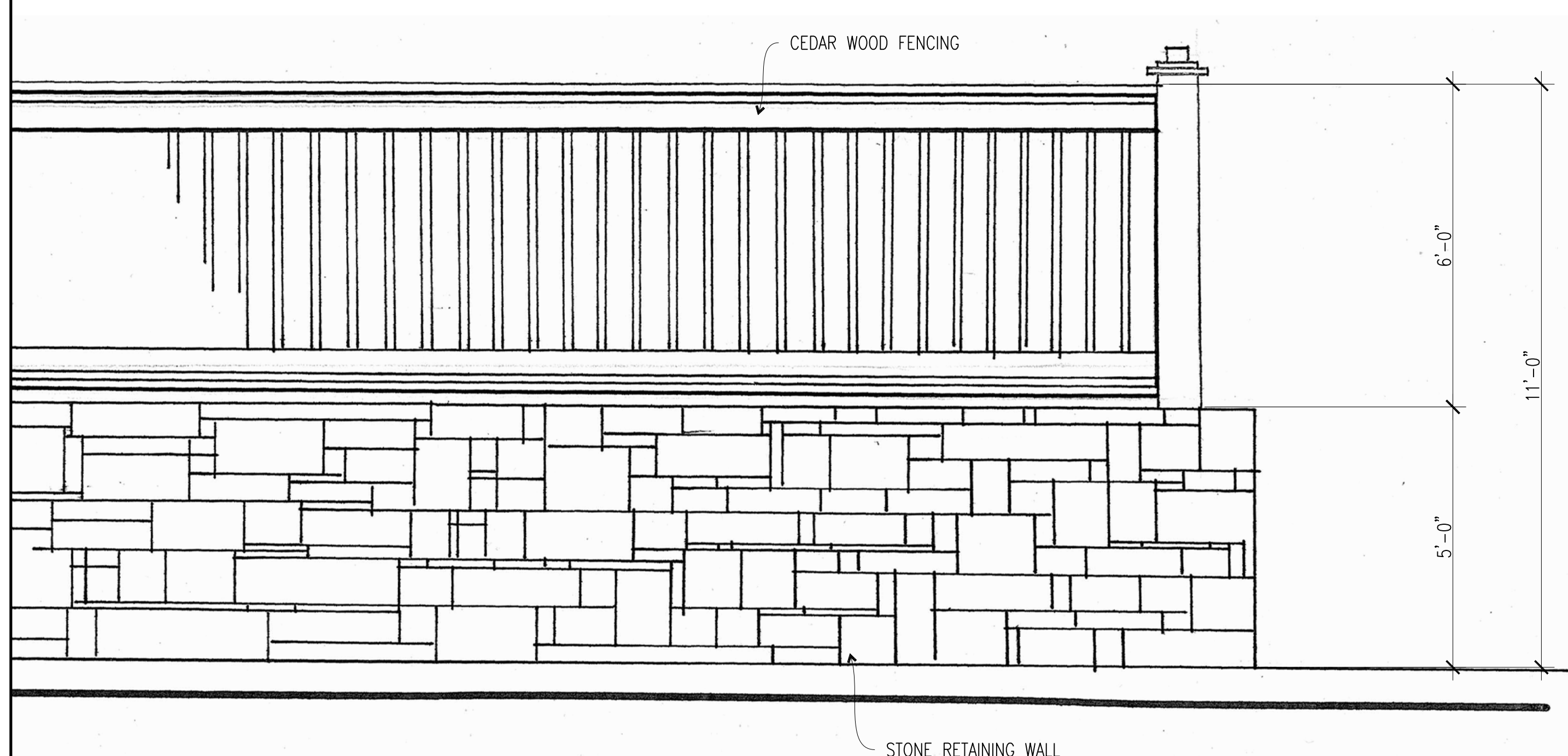
FOR REVIEW
PURPOSES ONLY
LANDSCAPE DETAILS

L-03

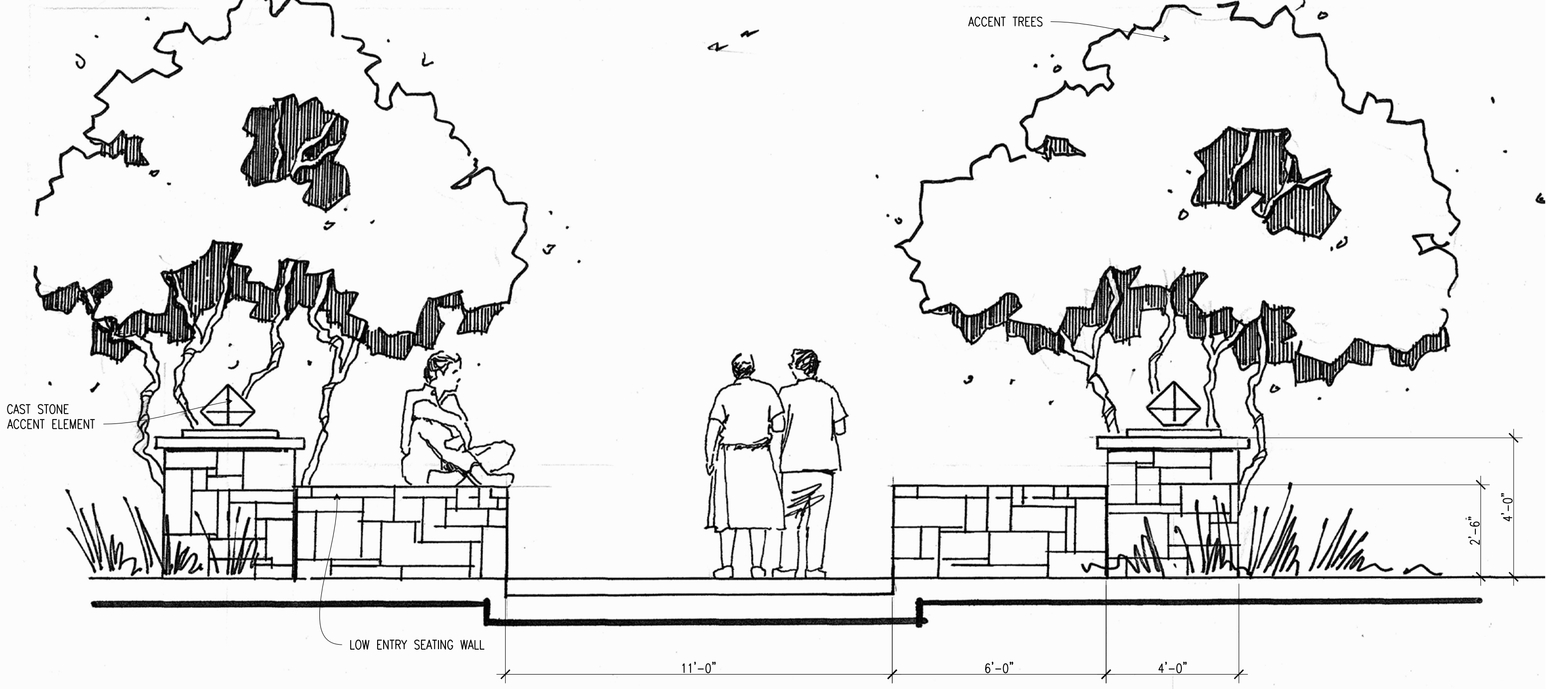


EASTHAVEN

C1 ENTRY MONUMENT ELEVATION
3/8"=1'-0"



A1 RETAINING WALL AND FENCE ELEVATION
1/2"=1'-0"



A7 RETAINING WALL AND FENCE ELEVATION
3/8"=1'-0"

DEVELOPER:
AMALGAMATED DEVELOPMENT, LP
5055 KELLER SPRINGS, SUITE 170
ADDISON, TX 75006
T 214-914-9809

PRELIMINARY
FOR REVIEW ONLY
These documents are for design review and not intended for construction, bidding, or permit purposes. They were prepared by or under the supervision of:
BRIAN D. ADAMS
Registered Landscape Architect
State of Texas #1676
April 16, 2012

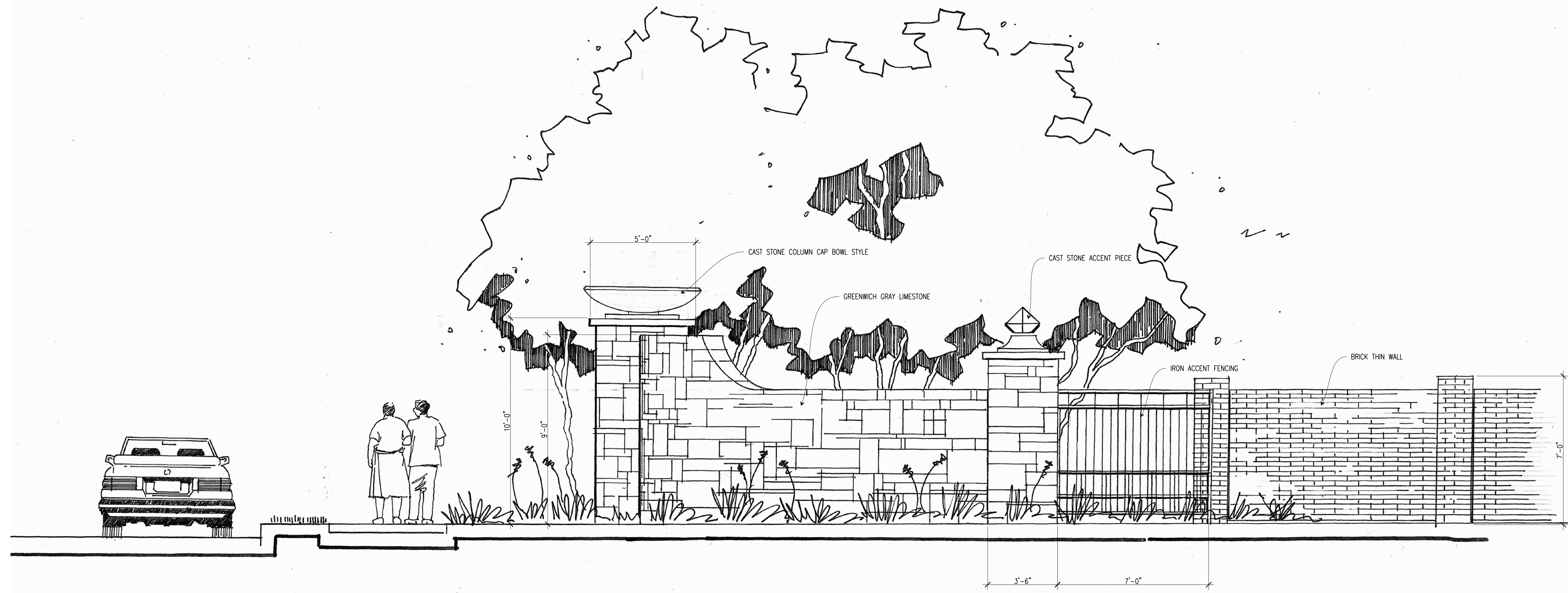
CALLISON
1445 ROSS AVE., STE 2600
DALLAS, TX 75202
T 214 446 0950
F 214 446 0951
www.callison.com

EASTHAVEN
PD-264 RBN-5
Coppell, Texas
213849.00

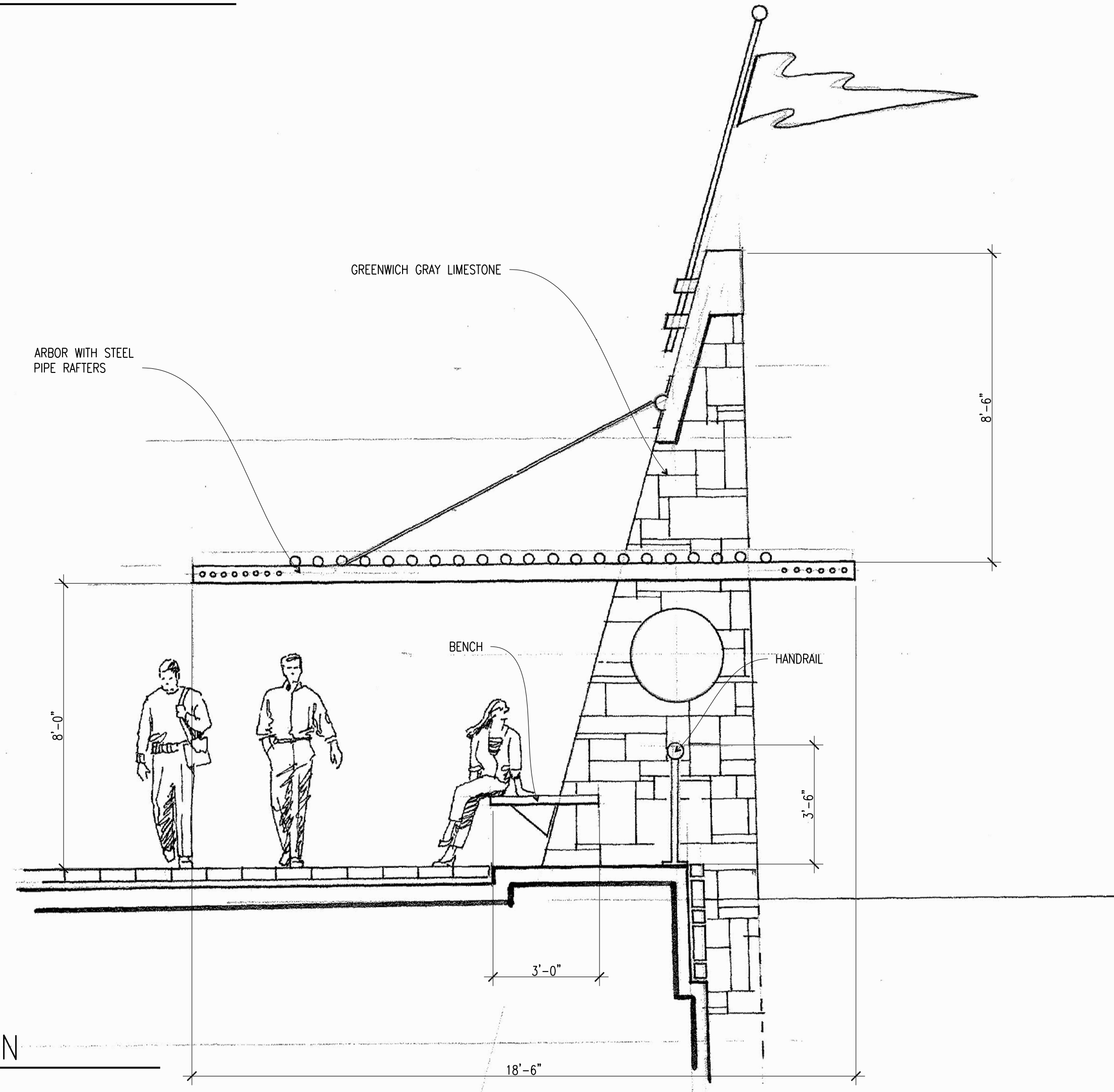
ISSUED / REVISED	DATE
Preliminary Submittal	04/17/13
DRG Submittal	05/02/13
1st P&Z Submittal	05/07/13
1st Council Submittal	05/30/13

FOR REVIEW PURPOSES ONLY
LANDSCAPE DETAILS

L-04



C1 MINOR ENTRY WALL ELEVATION
3/8"=1'-0"



A1 ARBOR ELEVATION
3/8"=1'-0"

DEVELOPER:
AMALGAMATED DEVELOPMENT, LP
5055 KELLER SPRINGS, SUITE 170
ADDISON, TX 75006
T 214-914-9809

PRELIMINARY
FOR REVIEW ONLY
These documents are for design review and not intended for construction, bidding, or permit purposes. They were prepared by or under the supervision of:
BRIAN D. ADAMS
Registered Landscape Architect
State of Texas #1676
April 16, 2012

CALLISON
1445 ROSS AVE., STE 2600
DALLAS, TX 75202
T 214 446 0950
F 214 446 0951
www.callison.com

EASTHAVEN
PD-264 RBN-5
Coppell, Texas

ISSUED / REVISED	DATE
Preliminary Submittal	04/17/13
DRC Submittal	05/02/13
1st P&Z Submittal	05/07/13
1st Council Submittal	05/30/13

FOR REVIEW
PURPOSES ONLY
LANDSCAPE DETAILS

L-05