

DEMOLITION KEY NOTES

- D1 REMOVE FRAME, DOOR, AND SALVAGE FOR REUSE. REFINISH DOOR TO LIKE NEW CONDITION PRIOR TO REINSTALLATION.
- D2 REMOVE PORTION OF EXISTING PARTITION TO ACCOMMODATE NEW DOOR AND/OR FRAME. REF. 02/IA02-02
- D3 EXISTING DOOR, DOOR FRAME AND HARDWARE TO BE REMOVED. SALVAGE HARDWARE FOR REUSE IF POSSIBLE.
- D4 RELOCATE EXISTING STROBE AND FIRE PULL IN NEW LAYOUT. DEMO PARTITION AND PROVIDE LINTEL/HEADER FOR NEW EXTERIOR OPENING. COORDINATE OPENING WITH OWNER/USER.
- D5 DEMOLISH AND DISCARD EXISTING MILLWORK AND LAVATORY. PLUMBING TO REMAIN IN EXISTING LOCATION. PREPARE PLUMBING TO RECEIVE NEW SINK. SALVAGE MINI DISHWASHER AND GARBAGE DISPOSER.
- D6 REMOVE EXISTING VINYL WALL COVERING. PREPARE FOR FINISH AS SCHEDULED.
- D7 PREPARE PARTITION FOR TV BLOCKING. COORDINATE LOCATION WITH 02/IA09-02 AND TENANT'S EQUIPMENT SPECIFICATIONS.
- D8 DEMO EXISTING SLATE FLOOR AND BASE. PREPARE FOR NEW FINISH AS SCHEDULED.
- D9 EXISTING DOES NOT HAVE LEVER/PASSAGE SET.
- D10 NEW DUMMY SETS REQUIRED TO MATCH EXISTING. REMOVE EXISTING PULL.
- D11 REMOVE EXISTING PASSAGE SET (NOT BUILDING STANDARD) AND PREPARE DOOR FOR NEW BUILDING STANDARD LEVERS.
- D12 REMOVE ALL FLOORING AND BASE AND PREPARE TO RECEIVE NEW FINISHES.

CONSTRUCTION KEY NOTES

- C1 PROVIDE 3/4" THICK PLYWOOD ON ALL WALLS FROM 18" AFF TO 6" BELOW CEILING. LEAVE SPACE BETWEEN DOOR AND FIRST STUD FOR LIGHT SWITCH. PAINT PLYWOOD PT-2.
- C2 NEW RAILING TO MATCH RAILING AT CITY HALL.
- C3 PATCH FURRING AT COLUMN FROM DEMOLISHED PARTITIONS.
- C4 OWNER PROVIDED EQUIPMENT. COORDINATE OPENING WITH OWNER/USER.



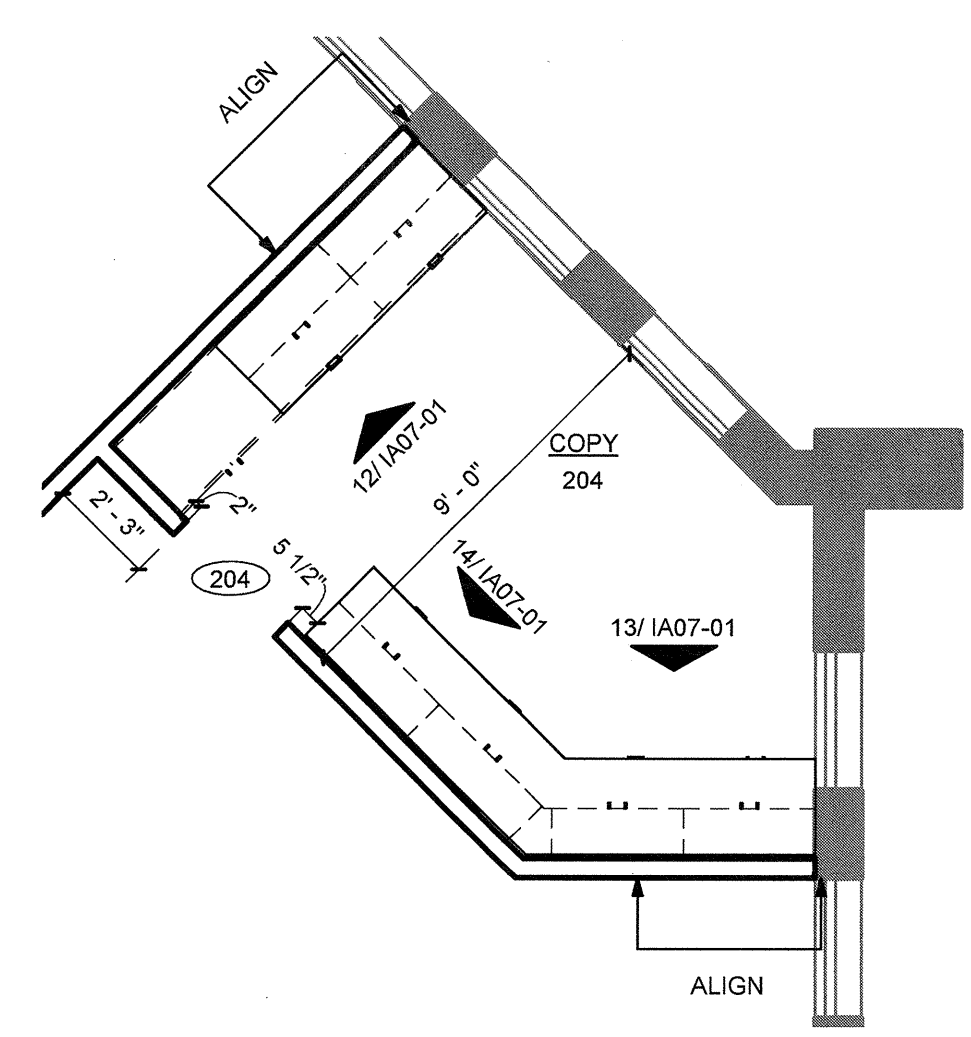
CORGAN ASSOCIATES, INC.
401 N. Houston Street
Dallas, TX 75202
T: 214.748.2000

ISSUES

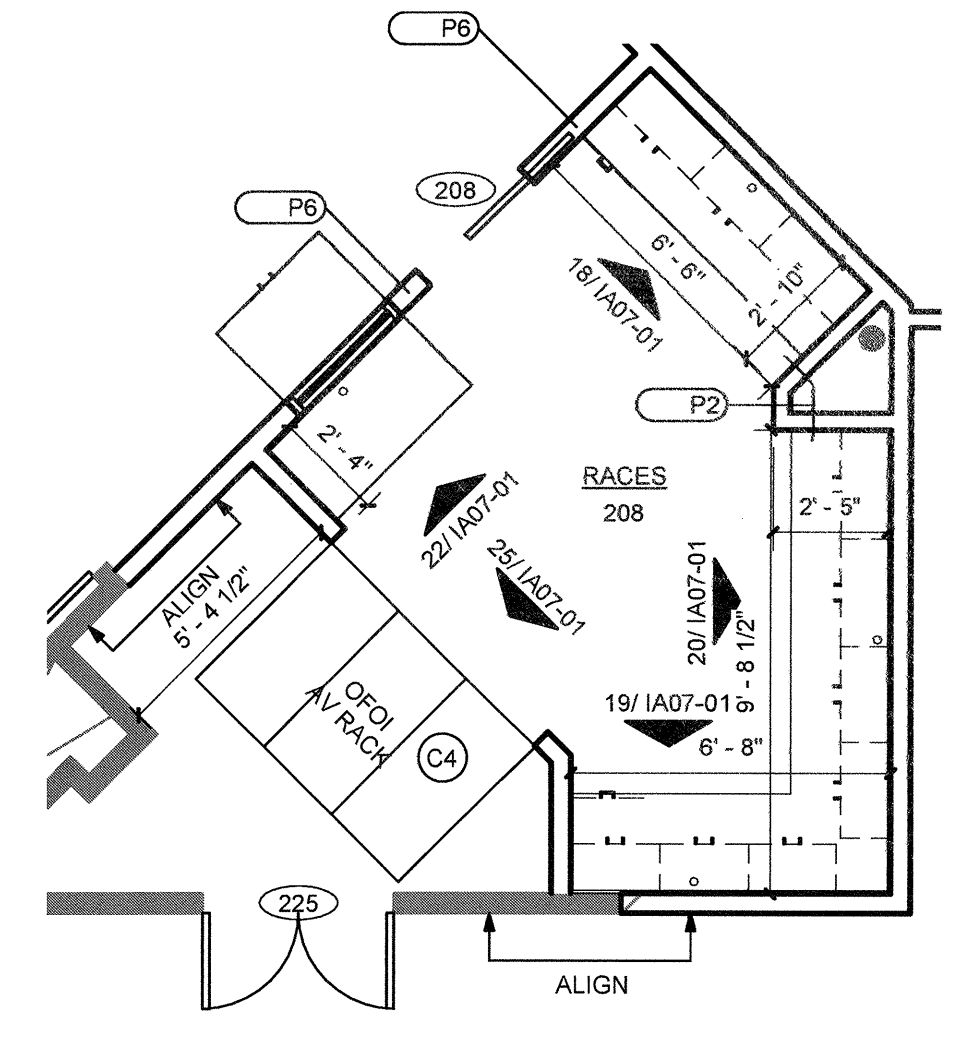
NO.	DATE	DESCRIPTION
1	6/14/13	ISSUE FOR CONSTRUCTION
2		
3		
4		
5		
6		
7		
8		
9		
10		

REVISIONS

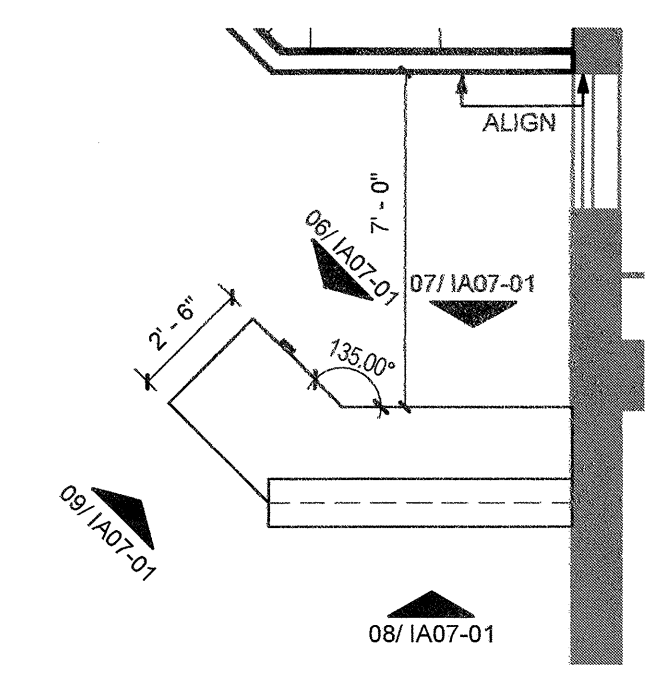
NO.	DATE	DESCRIPTION



7 COPY PLAN DETAIL
1/4" = 1'-0"



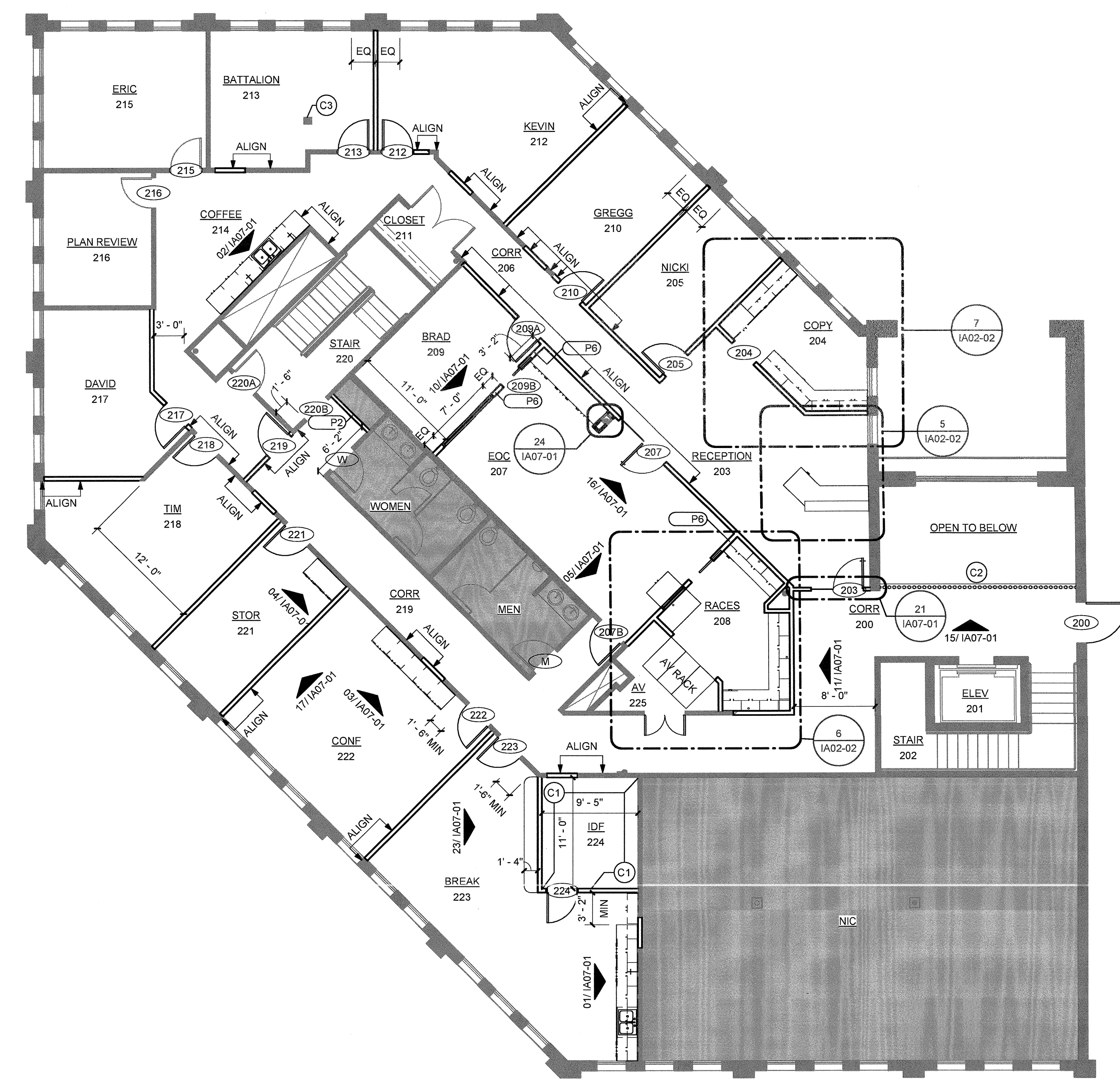
6 RACES PLAN DETAIL
1/4" = 1'-0"



5 RECEPTION DESK PLAN DETAIL
1/4" = 1'-0"



01 DEMOLITION PLAN - LEVEL 2
1/8" = 1'-0"

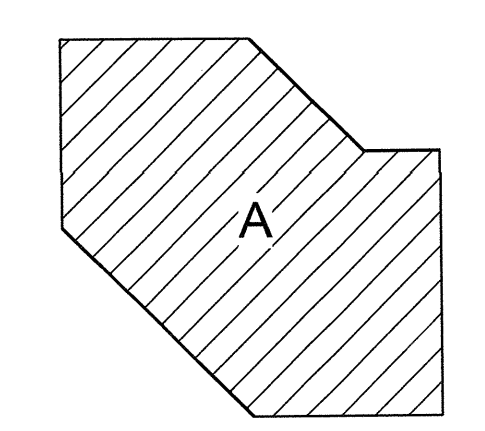


02 LEVEL 2 - CONSTRUCTION PLAN
1/8" = 1'-0"

6/14/2013 9:22:01 AM IA02-02 DEMOLITION & CONSTRUCTION PLAN - LEVEL TWO

**CITY OF COPPELL -
PHASE 2**

265 PARKWAY BLVD. SUITE 200
COPPELL, TX 75019



**DEMOLITION &
CONSTRUCTION
PLAN - LEVEL TWO**

JOB 12271.0100
DATE 6/14/13
SHEET

IA02-02