

BLP E. BELTLINE ROAD DEVELOPMENT

E. BELT LINE ROAD
COPPELL, TX

CONCEPT DESIGN
DAL22-0058-00
08.09.2022



This conceptual design is based upon a preliminary review of entitlement requirements and on unverified and possibly incomplete site and/or building information, and is intended merely to assist in exploring how the project might be developed. Signage shown is for illustrative purposes only and does not necessarily reflect municipal code compliance. All colors shown are for representative purposes only. Refer to material samples for actual color verification.

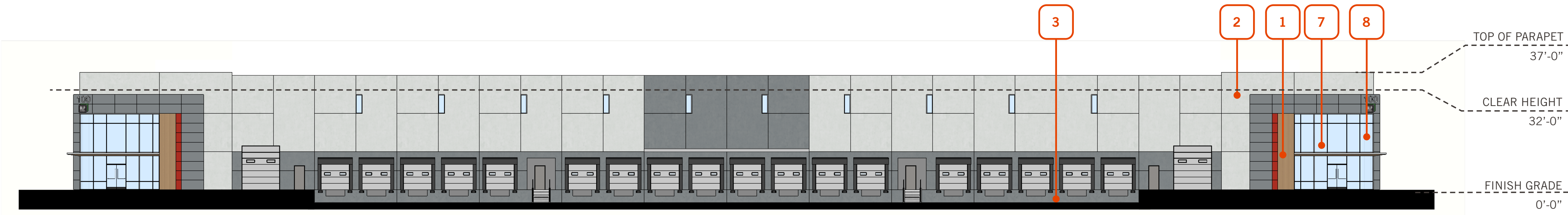
SOUTH EAST PERSPECTIVE VIEW - LIGHT WOOD + CLARION

BLP E. BELTLINE ROAD DEVELOPMENT
COPPELL, TX - DAL22-0058-00

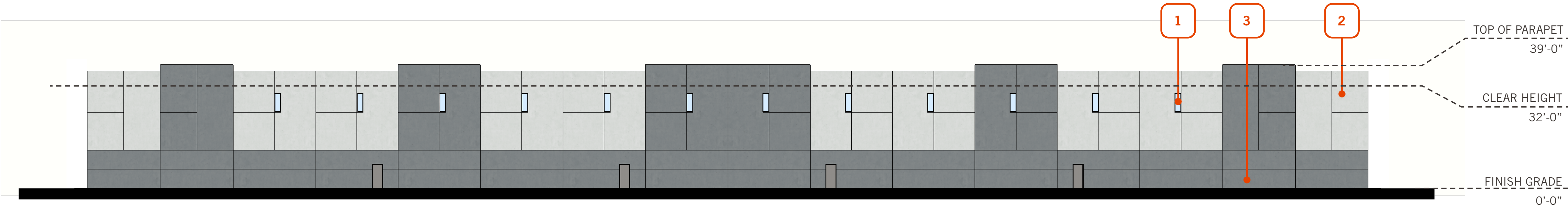
WARE MALCOMB

08.09.2022

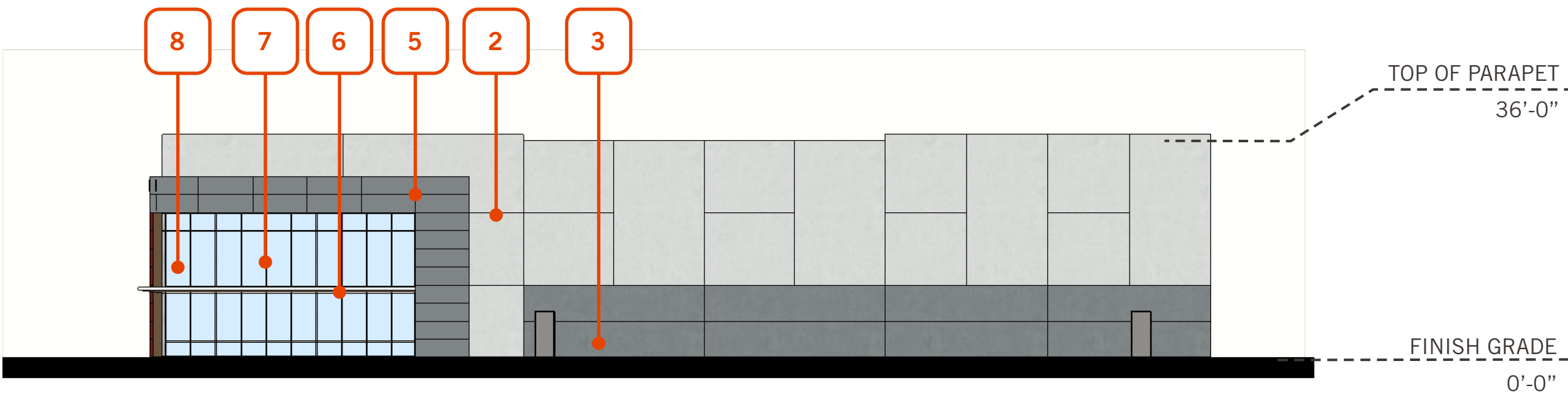
PAGE
2



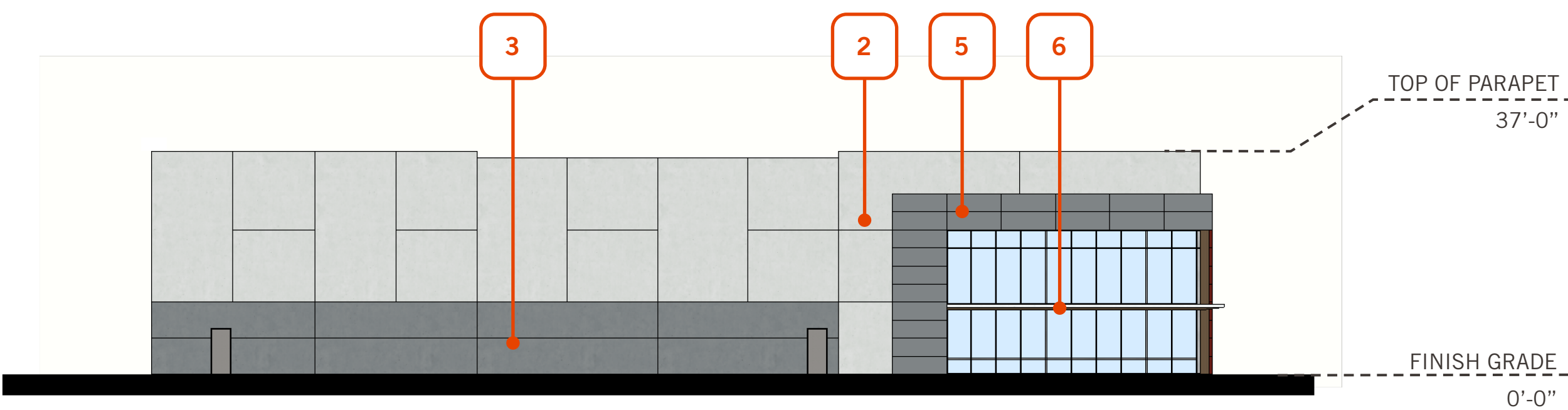
EAST ELEVATION



WEST ELEVATION



NORTH ELEVATION



SOUTH ELEVATION

ELEVATION + MATERIAL CALCS BUILDING HEIGHT - 37' - 0" ONE STORY	REQUIRED	PROVIDED	ELEVATION + MATERIAL CALCS BUILDING HEIGHT - 37' - 0" ONE STORY	REQUIRED	PROVIDED
NORTH ELEVATION TOTAL FAÇADE AREA EXCLUDING DOORS AND GLAZING = 5,302 SF			EAST ELEVATION TOTAL FAÇADE AREA EXCLUDING DOORS AND GLAZING = 13,267 SF		
CONCRETE TILTWALL = 4,671 SF	80.00%	88.00%	CONCRETE TILTWALL = 11,957 SF	80.00%	90.00%
COMPOSITE WOOD = 70 SF		1.00%	COMPOSITE WOOD = 350 SF		3.00%
ACM METAL PANEL = 561 SF		11.00%	ACM METAL PANEL = 960 SF		7.00%
ELEVATION + MATERIAL CALCS BUILDING HEIGHT - 37' - 0" ONE STORY	REQUIRED	PROVIDED	ELEVATION + MATERIAL CALCS BUILDING HEIGHT - 37' - 0" ONE STORY	REQUIRED	PROVIDED
SOUTH ELEVATION TOTAL FAÇADE AREA EXCLUDING DOORS AND GLAZING = 5,279 SF			WEST ELEVATION TOTAL FAÇADE AREA EXCLUDING DOORS AND GLAZING = 14,582 SF		
CONCRETE TILTWALL = 4,660 SF	80.00%	88.00%	CONCRETE TILTWALL = 15,308 SF	80.00%	100.00%
COMPOSITE WOOD = 61 SF		1.00%	COMPOSITE WOOD = 0 SF		0.00%
ACM METAL PANEL = 558 SF		11.00%	ACM METAL PANEL = 0 SF		0.00%

KEYNOTES

- 1

ACCENT WALL
LIGHT WOOD & CLARION
- 2

PAINTED TILT UP CONCRETE
SW 7071 GRAY SCREEN
- 3

PAINTED TILT UP CONCRETE
SW 7074 SOFTWARE
- 4
- 5

ACM PANELS
SW 7074 SOFTWARE
- 6

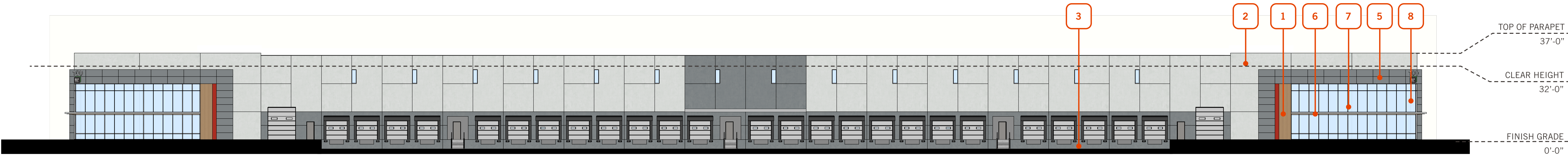
PREFAB AWNING
SW 7071 GRAY SCREEN
- 7

STOREFRONT
ANODIZED ALUMINUM
- 8

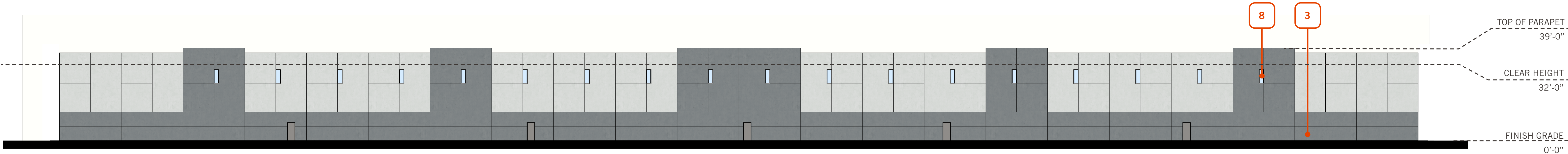
GLAZING
VITRO OPTIGRAY

This conceptual design is based upon a preliminary review of entitlement requirements and on unverified and possibly incomplete site and/or building information, and is intended merely to assist in exploring how the project might be developed. Signage shown is for illustrative purposes only and does not necessarily reflect municipal code compliance. All colors shown are for representative purposes only. Refer to material samples for actual color verification.

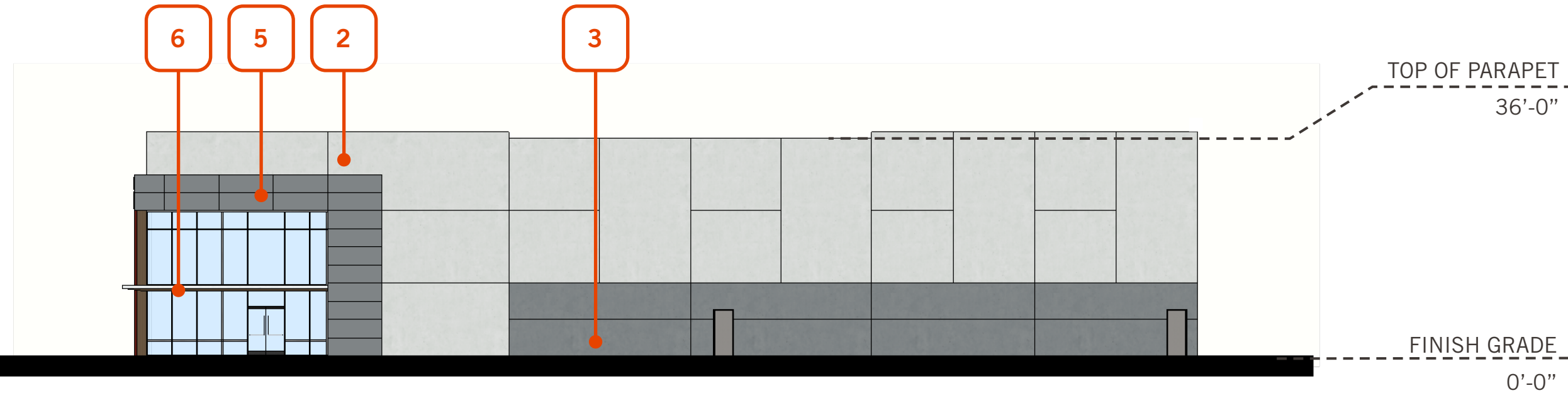
SCALE: 1" = 20'-0"



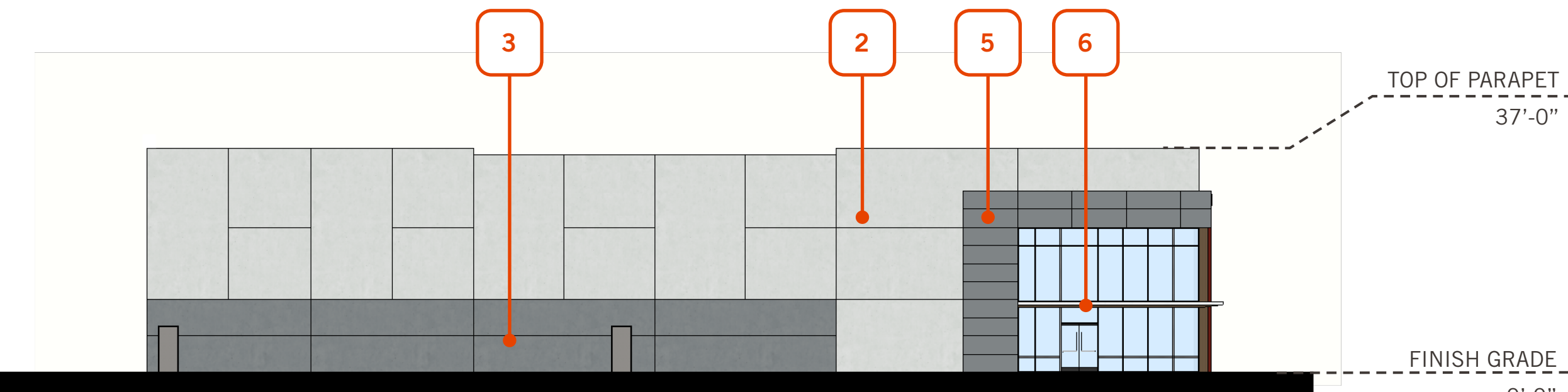
EAST ELEVATION



WEST ELEVATION



NORTH ELEVATION



SOUTH ELEVATION

ELEVATION + MATERIAL CALCS BUILDING HEIGHT - 37' - 0" ONE STORY	REQUIRED	PROVIDED	ELEVATION + MATERIAL CALCS BUILDING HEIGHT - 37' - 0" ONE STORY	REQUIRED	PROVIDED
NORTH ELEVATION TOTAL FAÇADE AREA EXCLUDING DOORS AND GLAZING = 5,596 SF			EAST ELEVATION TOTAL FAÇADE AREA EXCLUDING DOORS AND GLAZING = 16,010 SF		
CONCRETE TILTWALL = 5,090 SF	80.00%	91.00%	CONCRETE TILTWALL = 14,700 SF	80.00%	92.00%
COMPOSITE WOOD = 480 SF		1.00%	COMPOSITE WOOD = 350 SF		2.00%
ACM METAL PANEL = 451 SF		8.00%	ACM METAL PANEL = 960 SF		6.00%
ELEVATION + MATERIAL CALCS BUILDING HEIGHT - 37' - 0" ONE STORY	REQUIRED	PROVIDED	ELEVATION + MATERIAL CALCS BUILDING HEIGHT - 37' - 0" ONE STORY	REQUIRED	PROVIDED
SOUTH ELEVATION TOTAL FAÇADE AREA EXCLUDING DOORS AND GLAZING = 5,598 SF			WEST ELEVATION TOTAL FAÇADE AREA EXCLUDING DOORS AND GLAZING = 21,004 SF		
CONCRETE TILTWALL = 5,092 SF	80.00%	91.00%	CONCRETE TILTWALL = 20,382 SF	80.00%	100.00%
COMPOSITE WOOD = 51 SF		1.00%	COMPOSITE WOOD = 0 SF		0.00%
ACM METAL PANEL = 455 SF		8.00%	ACM METAL PANEL = 0 SF		0.00%

KEYNOTES

SCALE: 1" = 20'-0"

- 1

ACCENT WALL
LIGHT WOOD & CLARION
- 2

PAINTED TILT UP CONCRETE
SW 7071 GRAY SCREEN
- 3

PAINTED TILT UP CONCRETE
SW 7074 SOFTWARE
- 4

- 5

ACM PANELS
SW 7074 SOFTWARE
- 6

PREFAB AWNING
SW 7071 GRAY SCREEN
- 7

STOREFRONT
ANODIZED ALUMINUM
- 8

GLAZING
VITRO OPTIGRAY

This conceptual design is based upon a preliminary review of entitlement requirements and on unverified and possibly incomplete site and/or building information, and is intended merely to assist in exploring how the project might be developed. Signage shown is for illustrative purposes only and does not necessarily reflect municipal code compliance. All colors shown are for representative purposes only. Refer to material samples for actual color verification.