



CLIENT
City of Coppell
816 S Coppell Rd
Coppell, Texas 75019

PROJECT NO.
40092.22

KEY PLAN

#	DATE	DESCRIPTION
1	02/15/2024	75% DD Set

Exterior
Elevations
A-201

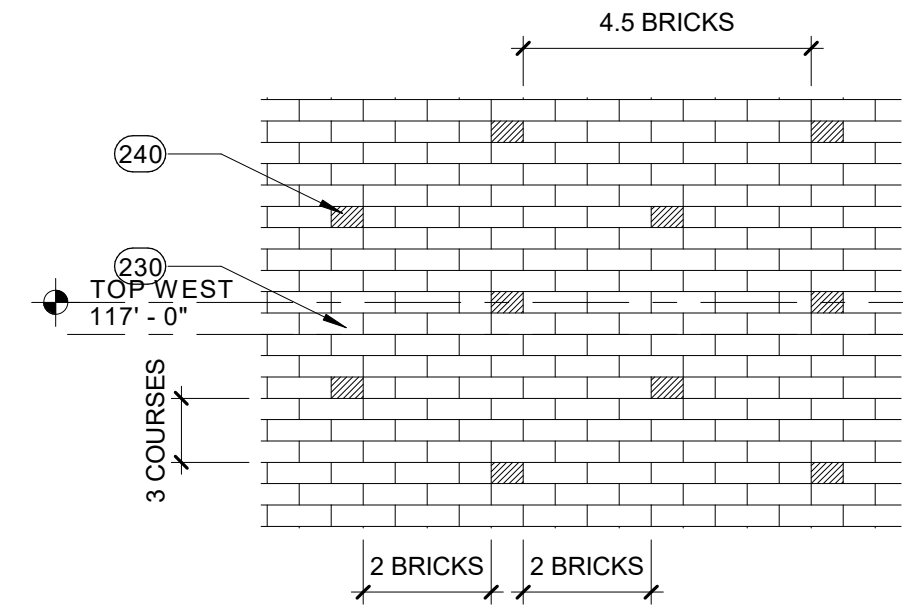
GENERAL NOTES

- A. CONTRACTOR TO VERIFY ALL DIMENSIONS, REFER TO GLAZING SCHEDULE AND FLOOR PLAN FOR ADDITIONAL DIMENSIONS
B. REFER TO MPE DRAWINGS FOR ADDITIONAL WORK AT EQUIPMENT LOCATIONS
C. PROVIDE BLOCKING WHERE UPPER MILLWORK CABINETS ARE INDICATED
D. LOCATION OF OUTLETS ARE GENERIC. INSTALL OUTLETS LEVEL TO EACH OTHER UNLESS NOTED OTHERWISE
E. REFER TO ACCESSIBILITY STANDARDS SHEETS FOR TYPICAL MOUNTING HEIGHTS/LOCATIONS FOR ACCESSORIES
F. PROVIDE BLOCKING FOR ALL RESTROOM ACCESSORIES, GC COORDINATE LOCATIONS TO MEET ADATAS REQUIREMENTS

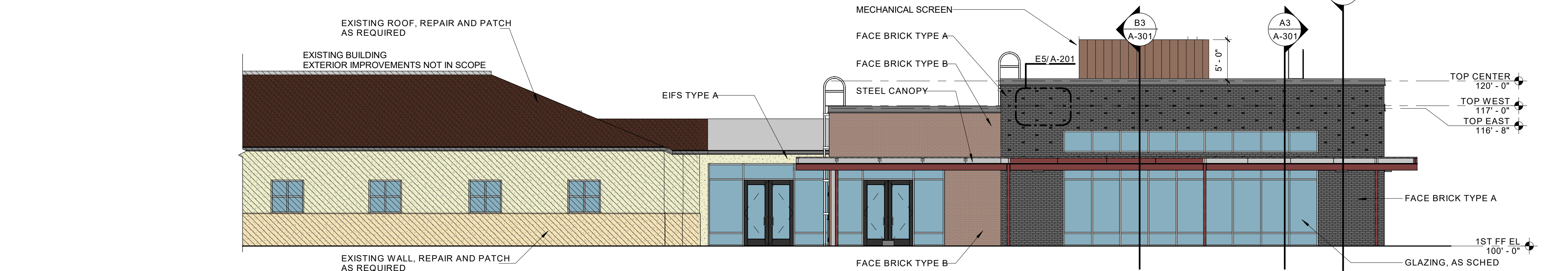
KEY NOTES

AS INDICATED BY (#) →

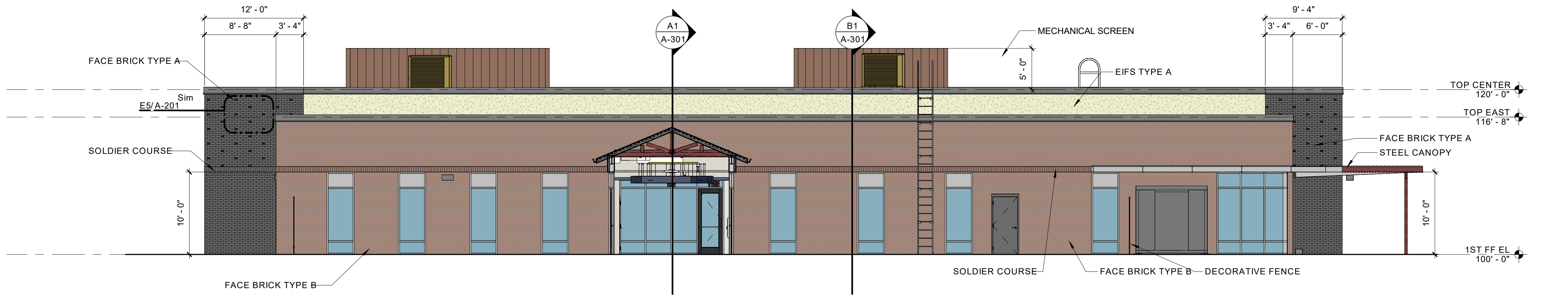
- 103 STEEL CANOPY
106 MECHANICAL SCREEN
107 DECORATIVE FENCE
108 EXISTING WALL, REPAIR AND PATCH AS REQUIRED
109 EXISTING ROOF, REPAIR AND PATCH AS REQUIRED
230 FACE BRICK TYPE A
231 FACE BRICK TYPE B
239 SOLDIER COURSE
240 PROJECTED BRICK HEADER COURSE - BRICK TYPE A
270 MTL PANEL SYSTEM TYPE A
280 EIFS TYPE A
291 FIBER CEMENT ARCHITECTURAL WALL PANEL
410 GLAZING, AS SCHED
412 ALUM STORE FRONT & GLAZING, AS SCHED
445 ACCESS LADDER
461 STEEL CANOPY



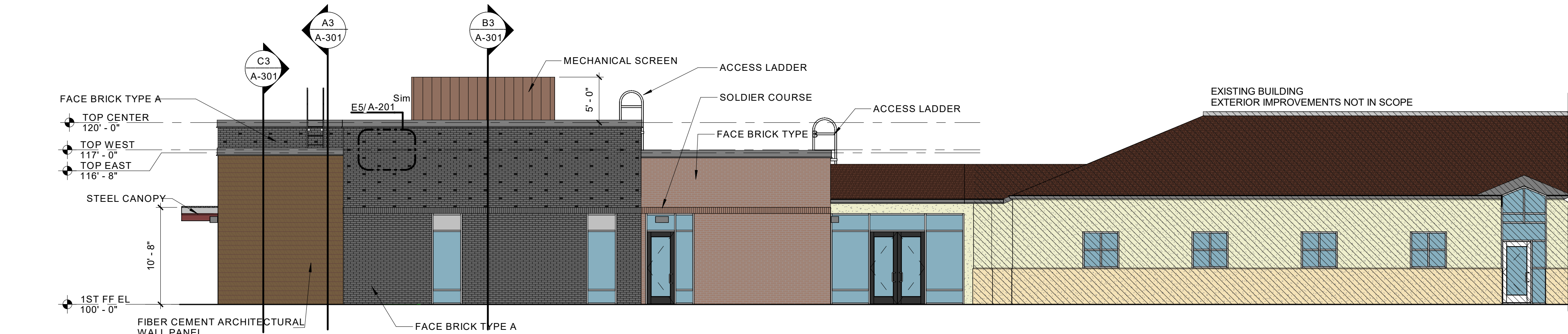
E5 BRICK DETAIL
1/2" = 1'-0"



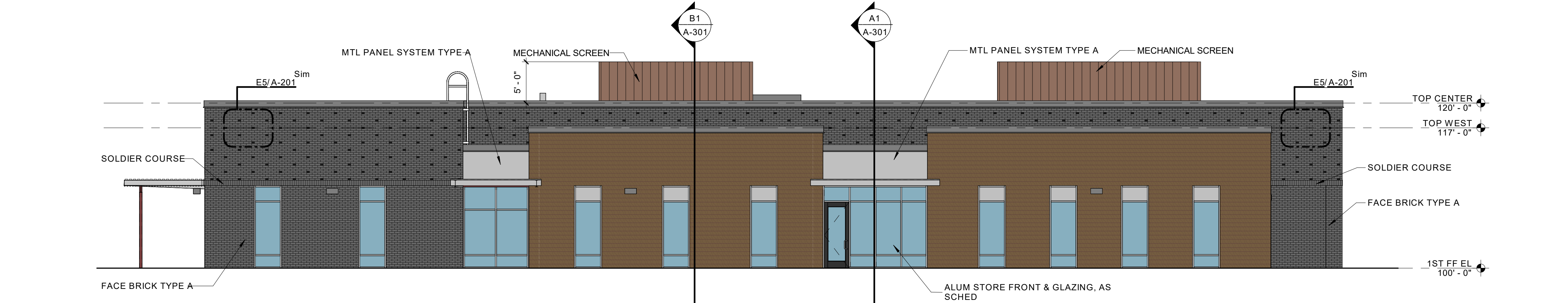
D3 NORTH ELEVATION
1/8" = 1'-0"



C3 EAST ELEVATION
1/8" = 1'-0"



B3 SOUTH ELEVATION
1/8" = 1'-0"



A3 WEST ELEVATION
1/8" = 1'-0"



Parkhill