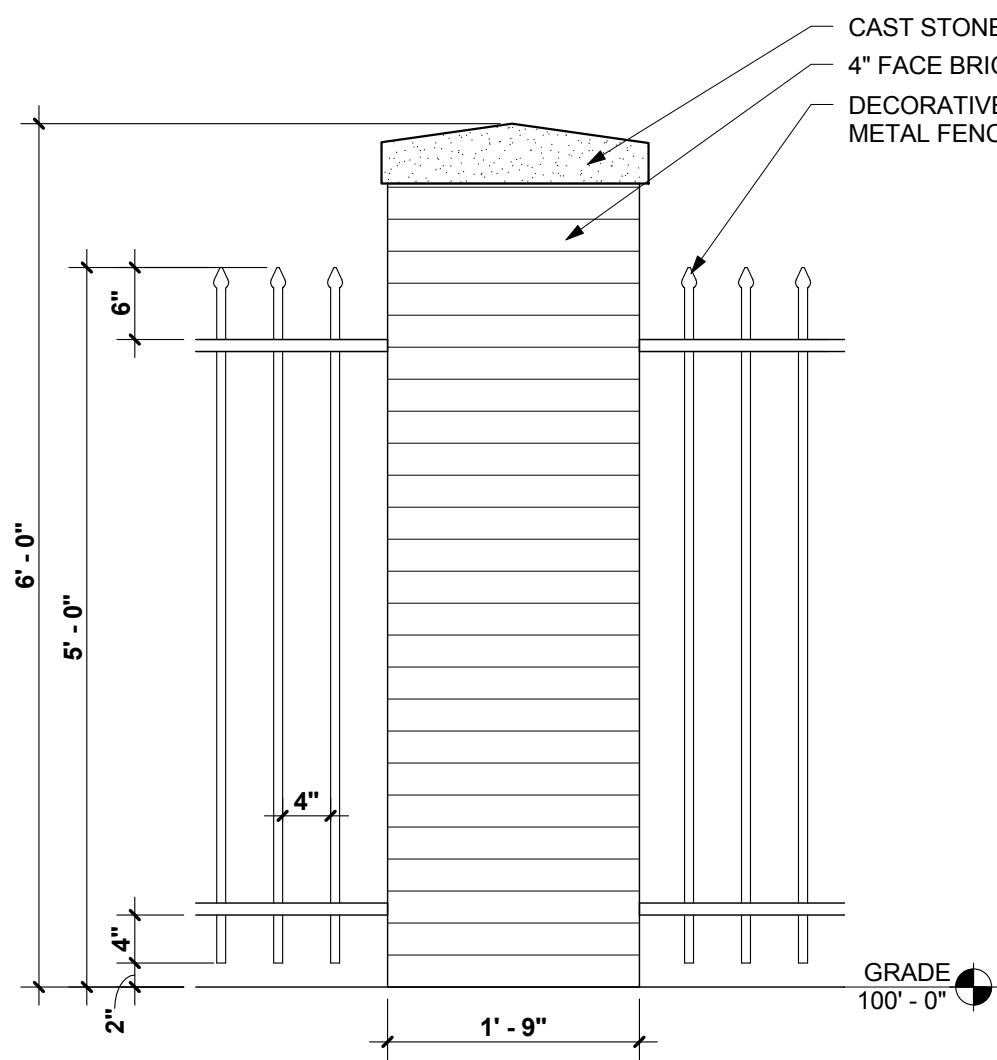


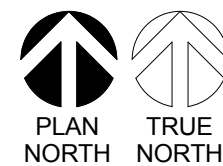
2 SECTION - BRICK PILASTER
1 1/2" = 1'-0"



3 FENCE/ PILASTER ELEVATION
3/4" = 1'-0"

SITE ELEMENTS

SYMBOL	DESCRIPTION
	STREET LIGHT (SHALL MATCH EXISTING SPECIFICATION AT OLD TOWN COPPELL)
	LIGHT BOLLARD
	RAILROAD CROSSING SIGNALS
	TRAFFIC SIGNAL
	FLAGPOLE
	STONE BENCH
	BRICK PILASTER
	MONUMENT



1 SITE PLAN

1" = 20'-0"



BURNS STREET

DRIVEWAY

S. COPPELL RD.

DRIVEWAY

SITE DATA TABLE

EXISTING ZONING	PD-108R8-H
PROPOSED ZONING	PD-108R12-H
PROPOSED USES	EDUCATION BUILDING AND LIFE SAFETY PARK
EDUCATION BUILDING TOTAL:	11,700 SF
LIFE SAFETY PARK:	
TRAIN DEPOT	1,400 SF
VEHICLE STORAGE BUILDING	2,800 SF
PUBLIC SAFETY BUILDING	2,720 SF
HOME SAFETY BUILDING	1,100 SF
TOTAL:	7,820 SF
EDUCATION BUILDING HEIGHT:	40' - 0"
LIFE SAFETY PARK BUILDING HEIGHTS:	
TRAIN DEPOT	20' - 0"
VEHICLE STORAGE BUILDING	21' - 0"
PUBLIC SAFETY BUILDING	24' - 0"
HOME SAFETY BUILDING	24' - 0"
REQUIRED PARKING	25 SPACES
PROVIDED PARKING	
ON-STREET PARKING	6 SPACES
OFF-STREET PARKING	29 SPACES
PROPOSED LOT COVERAGE	25%
FLOOR AREA RATIO	.25 TO 1
TOTAL ACREAGE	2.03 ACRES
ADJACENT ZONING DISTRICTS	
NORTH	PD-108R11-H
EAST	PD-108R5-H
SOUTH	LI
WEST	LI
NORTHWEST	PD-250-H

LEGEND

SYMBOL	DESCRIPTION	PATTERN (N.T.S.)
	EXISTING STREET/DRIVE/ SIDEWALK	N/A
	SIDEWALK	N/A
	PARKING / INTERIOR DRIVE PAVING	N/A
	COMPOSITE WOOD DECK	N/A
	CROSSWALK / CURB RAMP LANDING STAMPED CONCRETE: STAINED RED	MATCH OLD TOWN/ CITY STDS
	DECORATIVE PAVING 1 STAMPED CONCRETE: INTERLOCKING PLANK, STAINED BEIGE	
	DECORATIVE PAVING 2 STAMPED CONCRETE: ASHLAR RANDOM, STAINED BEIGE (VARIEGATED)	
	DECORATIVE PAVING 3 STAINED CONCRETE: BEIGE	N/A
	DECORATIVE PAVING 4 STAMPED CONCRETE: RIVER STONE EMBOSSED, STAINED BEIGE	



BROWN REYNOLDS WATFORD ARCHITECTS
3333 TRAVIS STREET
SUITE 250
DALLAS, TEXAS 75204
214-528-8704
WWW.BRWARCH.COM

PROJ: COPPELL SERVICE CENTER

SUBDIVISION: (LIFE SAFETY PARK)

ADDRESS: 820 S. COPPELL RD.

BLOCK/LOT: LOT 2R/ BLOCK 1

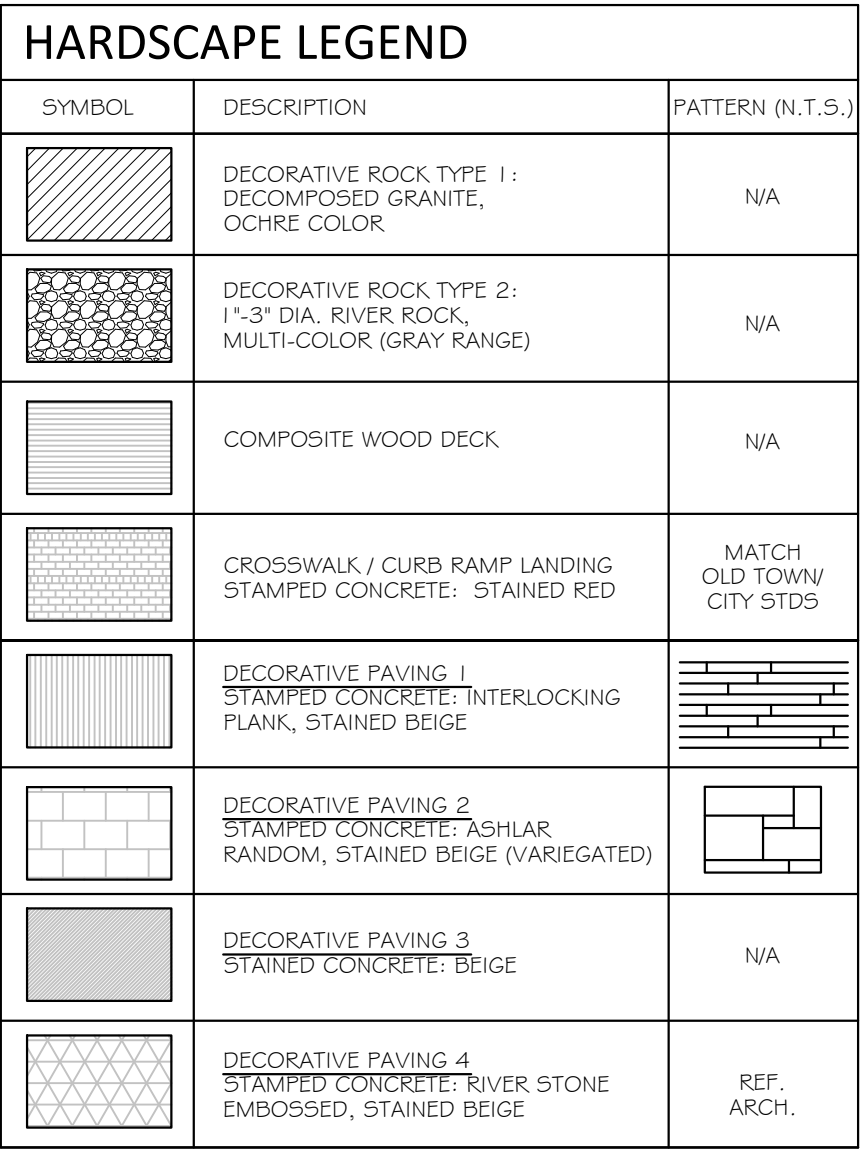
SURVEY/ABSTRACT: 201400050913

ACREAGE: 2.03 ACRES

INTERIM REVIEW DOCUMENTS
NOT INTENDED FOR BIDDING OR CONSTRUCTION PURPOSES
GARY DEVRIES
TX REG. NO. 10212

MARCH 3, 2015

C1.0

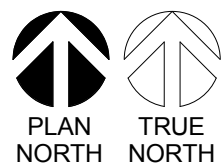


GENERAL LANDSCAPE NOTES

1. CONTRACTOR IS RESPONSIBLE FOR VERIFYING LOCATIONS OF UNDERGROUND UTILITIES AND STRUCTURES PRIOR TO CONSTRUCTION.
2. LANDSCAPE CONTRACTOR SHALL COORDINATE WITH ALL OTHER TRADES. THE LANDSCAPE CONTRACTOR SHALL PROTECT ALL LANDSCAPE MATERIALS FROM DAMAGE. DAMAGED PLANT MATERIAL SHALL BE REPLACED WITH SIMILAR VARIETIES AND SIZES IF DAMAGED, DESTROYED, OR LOST.
3. IT IS THE RESPONSIBILITY OF THE CONTRACTOR TO ADVISE THE LANDSCAPE ARCHITECT OF ANY CONDITION FOUND ON THE SITE WHICH PROHIBITS INSTALLATION AS SHOWN ON THE DRAWINGS.
4. ALL SHRUB, GROUNDCOVER, PERENNIAL & SEASONAL BEDS SHALL HAVE A 2" THICK SHREDDED HARDWOOD MULCH LAYER, UNLESS OTHERWISE NOTED. FINISHED LEVEL OF MULCH TO SIT 1" BELOW ADJOINING FINISHED HARDSCAPE AND LAWN LEVEL.
5. ALL PLANT MATERIAL SHALL BE MAINTAINED IN A HEALTHY AND VIGOROUS GROWING CONDITION, AND MUST BE REPLACED WITH PLANT MATERIAL OF SIMILAR VARIETY AND SIZE IF UNHEALTHY, DAMAGED, DESTROYED, OR OTHERWISE REMOVED.
6. STRUCTURAL AND HARDSCAPE WORKS SHALL BE INSTALLED PRIOR TO PLANTING INSTALLATION.
7. LANDSCAPE AREAS SHALL BE KEPT FREE OF TRASH, LITTER AND WEEDS AT ALL TIMES DURING CONSTRUCTION.
8. PLANT SPACING IS AS INDICATED ON THE 'PLANT SCHEDULE' UNLESS OTHERWISE NOTED. IT IS THE CONTRACTOR'S RESPONSIBILITY TO PROVIDE FULL COVERAGE IN ALL PLANTING AREAS AS SPECIFIED IN THE PLANT SCHEDULE REMARKS. IT IS THE CONTRACTOR'S RESPONSIBILITY TO CONDUCT AN INDEPENDENT 'TAKE-OFF' TO VERIFY SIZES AND QUANTITIES OF PLANT MATERIALS SHOWN.
9. REFER TO PLANTING SCHEDULES FOR ALL PLANTING TYPES, SIZES AND SPACING.
10. AN AUTOMATIC IRRIGATION SYSTEM SHALL BE PROVIDED TO IRRIGATE ALL TURF AND LANDSCAPE BED AREAS AND SHALL BE OPERATIONAL AT THE TIME OF PLANT MATERIAL INSTALLATION. OVERSPRAY ON STREETS AND WALKS IS PROHIBITED. ALL WORK ON THE IRRIGATION SYSTEM, INCLUSIVE OF HYDROSTATIC COVERAGE AND OPERATIONAL TESTS SHALL BE COMPLETED PRIOR TO PLANTING INSTALLATION.
11. ALL TREES PLANTED NEAR CURBS SHALL BE PLACED AT LEAST 6' CLEAR FROM THE CURB FACE UNLESS OTHERWISE NOTED. REFERENCE CITY LANDSCAPE NOTES FOR OTHER REQUIREMENTS.
12. MAINTENANCE: THE OWNER, TENANT AND THEIR AGENT, IF ANY SHALL BE JOINTLY AND SEVERALLY RESPONSIBLE FOR THE MAINTENANCE OF ALL LANDSCAPING, ALL REQUIRED LANDSCAPING SHALL BE MAINTAINED IN A NEAT AND ORDERLY MANNER AT ALL TIMES. THIS SHALL INCLUDE MOWING, EDGING, PRUNING, FERTILIZING, WATERING, WEEDING, AND OTHER SUCH ACTIVITIES COMMON TO THE MAINTENANCE OF LANDSCAPING. LANDSCAPED AREAS SHALL BE KEPT FREE OF TRASH, LITTER, WEEDS AND OTHER SUCH MATERIAL OR PLANTS NOT A PART OF THE LANDSCAPING. ALL PLANT MATERIALS SHALL BE MAINTAINED IN A HEALTHY AND GROWING CONDITION AS IS APPROPRIATE FOR THE SEASON OF THE YEAR. PLANT MATERIALS WHICH DIE SHALL BE REPLACED WITH PLANT MATERIAL OF SIMILAR VARIETY AND SIZE.
13. ALL PLANTING AREAS SHALL BE IRRIGATED. DETAILED IRRIGATION PLAN WILL BE PROVIDED FOR PERMITTING APPROVAL.

PLANT MATERIAL SCHEDULE							
QUANTITY	COMMON NAME	BOTANICAL NAME	CAL.	HT.	SPREAD	CONT.	REMARKS
SHADE TREES							
9	CEDAR ELM	ULMUS CRASSIFOLIA	3"	12'-15'	10' - 12'	B4B	FULL 4 MATCHED, STRAIGHT TRUNK
6	LIVE OAK	QUERCUS VIRGINIANA	3"	12'-15'	10' - 12'	B4B	FULL 4 MATCHED, STRAIGHT TRUNK
7	SHUMARD RED OAK	QUERCUS SHUMARDI	3"	12'-15'	10' - 12'	B4B	FULL 4 MATCHED, STRAIGHT TRUNK
ORNAMENTAL TREES							
5	CHERRY LAUREL	PRUNUS CAROLINIANA	2"	6'-8'	6'-8'	B4B	
7	TEXAS REDBUD	CERKIS CANADENSIS VAR. TEXENSIS	2"	6'-8'	6'-8'	B4B	
7	TUSCARORA CRAPE MYRTLE	LAGESTROEMIA INDICA TUSCARORA	2"	6'-8'	6'-8'	B4B	
SHRUBS							
4	AGARITO	BERBERIS TRIFOLIATA	-	36" MIN	36" MIN	3 GAL	A5 INDICATED ON PLANS
16	AUTUMN SAGE (VARIETY)	SALVIA GREGGII 'CORAL', 'DANCE DANCER' & 'RASPBERRY'	-	24" MIN	18" MIN	2 GAL	24" O.C. TRUNKS SPACED, EQUAL QUANTITIES OF EACH CULTIVAR, RANDOMLY MIXED IN BED
26	DWARF YALPON HOLLY	ILEX VOMITORIA NANA	-	24" MIN	18" MIN	2 GAL	36" O.C. TRIANGULAR SPACING, OR AS INDICATED ON PLANS
96	INDIAN HAWTHORN	RAPIHIDEPHSIS INDICA ENCHAETRES	-	36" MIN	36" MIN	3 GAL	36" O.C. TRIANGULAR SPACING, OR AS INDICATED ON PLANS
12	NELLIE R. STEVENS HOLLY	ILEX x NELLIE R. STEVENS	-	48" MIN	48" MIN	10 GAL	AS INDICATED ON PLANS
41	RED YUCCA	HESPERALOE PARVIFLORA	-	36" MIN	36" MIN	3 GAL	AS INDICATED ON PLANS
30	SAVANNAH HOLLY	ILEX x ATTENUATA SAVANNAH	-	6'-0" MIN	6'-0" MIN	10 GAL	7'-3" O.C. SPACING, FULL TO GROUND, HEDGE FORM
20	TEXAS SAGE	LEUCOPHYLLUM FRUTESCENS TEXAS RANGER	-	36" MIN	36" MIN	3 GAL	36" O.C. TRIANGULAR SPACING, OR AS INDICATED ON PLANS
ORNAMENTAL GRASSES							
49	GULF MUHLY	MUHLENBERGIA CAPILLARIS	-	36" MIN	36" MIN	3 GAL	36" O.C. TRIANGULAR SPACING, OR AS INDICATED ON PLANS
24	LINDHEIMER MUHLY	MUHLENBERGIA LINDHEIMERI	-	36"	36"	3 GAL	A5 INDICATED ON PLANS
66	LITTLE BUNNY MOUNTAIN GRASS	PEMASETUM ALOPECUROIDES LITTLE BUNNY	-	24"	24"	3 GAL	24" O.C. SPACING, OR AS INDICATED ON PLANS
212	MEXICAN FEATHERGRASS	NASSELLA TENUISSIMA	-	24"	24"	3 GAL	24" O.C. SPACING, OR AS INDICATED ON PLANS
GROUND COVER							
319	ASIAN JASMINE	TRACHELOSPERMUM ASIATICUM	-	6" MIN.	6" MIN.	4" POT	12" O.C. TRIANGULAR SPACING
1140	BIG BLUE LIRIOPE	LIRIOPE MUSCARI 'BIG BLUE'	-	12"	12"	6" POT	12" O.C. TRIANGULAR SPACING
302	MEXICAN PETUNIA	RUEPILIA BRITTONIANA 'KATIE BLUE'	-	12"	12"	1 GAL.	15" O.C. TRIANGULAR SPACING
TURF GRASS							
30,307 SF	BERMUDA GRASS SOD	CYNODON DACTYLON / TUFF 419					HAND-LAID SOD PANELS
OTHER							
1,005 LF	STEEL BED EDGING			6" BROWN COLOR, W/ 10" STAKES			INSTALL 1" ABOVE ADJACENT GRADE WITH STAKES
790 SF	ROCK MULCH TYPE 1: DECOMPOSED GRANITE AT PLANTING BEDS AND STAND ALONE BEDS						3" DEPTH ON GEOTEXTILE SOIL SEPARATOR OVER COMPACTED SUB-BASE
1,002 SF	ROCK MULCH TYPE 2: 1" - 3" DIA. RIVER ROCK AT PLANTING BEDS AND STAND-ALONE BEDS						4" - 5" TYP. DEPTH ON GEOTEXTILE SOIL SEPARATOR OVER COMPACTED SUB-BASE, ALLOW LOOSE SOIL AND 2" - 3" LAYER AT PLANT ROOTBALL COVER AREAS


<h1>david mccaskill design group</h1>	
<p><i>landscape architecture / park, trail and recreation planning</i></p> <p>david@dmccaskilldesign.com 620 E southlake blvd. southlake, tx 76092/ 817.709.2085</p>	
PRO: COPPELL SERVICE CENTER	
SUBDIVISION: (LIFE SAFETY PARK)	
BLOCK/LOT: LOT 2R/BLOCK 1	
SURVEY/ABSTRACT: 201400050913	
ACREAGE: 2.03 acres	
<div> <p>INTERIM REVIEW DOCUMENTS</p> <p>NOT INTENDED FOR BIDDING OR CONSTRUCTION PURPOSES</p> <p>ANDREW COUSINS RLA NO. 2704</p> </div>	MARCH 3, 2015
	LANDSCAPE PLAN



TREE SURVEY

NOT TO SCALE

Tree Inventory					
City of Coppell Property					
800 South Coppell Road					
Tree ID	Northing	Easting	Elevation	Tree Type	Caliper
1000	7031881.104	2427220.034	512.567	HACKBERRY	6
1001	7031910.172	2427242.015	521.455	EASTERN CEDAR	6
1002	7031925.002	2427279.321	508.859	EASTERN CEDAR	7
1003	7031968.335	2427265.94	512.526	EASTERN CEDAR	6
1004	7031983.534	2427294.254	510.879	EASTERN CEDAR	6
1005	7032037.263	2427251.937	509.476	EASTERN CEDAR	7
1006	7032123.271	2427206.418	524.899	EASTERN CEDAR	6
1007	7032139.004	2427213.857	519.649	EASTERN CEDAR	8
1008	7032133.969	2427173.681	517.432	EASTERN CEDAR	7
1009	7032128.116	2427101.685	529.442	EASTERN CEDAR	8
1010	7032130.03	2427052.068	512.207	EASTERN CEDAR	7
1011	7032006.307	2427092.266	517.7	EASTERN CEDAR	7
1012	7032037.945	2427086.929	511.644	EASTERN CEDAR	6
1013	7032097.367	2427114.776	515.469	EASTERN CEDAR	6, 6
1014	7032083.774	2427164.504	520.118	EASTERN CEDAR	6
1015	7032113.883	2427162.928	489.43	EASTERN CEDAR	6
1016	7032097.746	2427183.251	512.87	EASTERN CEDAR	6
1017	7032063.903	2427171.563	517.258	EASTERN CEDAR	7
1018	7032024.117	2427189.373	515.069	EASTERN CEDAR	6
1019	7032028.761	2427215.779	513.933	EASTERN CEDAR	6
1020	7032010.334	2427239.558	518.486	EASTERN CEDAR	6
1021	7031990.563	2427235.759	515.568	EASTERN CEDAR	6
1022	7031967.274	2427231.732	527.164	EASTERN CEDAR	6
1023	7031924.296	2427228.869	526.029	EASTERN CEDAR	6
1024	7031931.338	2427196.616	512.554	EASTERN CEDAR	7
1025	7031908.58	2427204.182	527.439	EASTERN CEDAR	7
1026	7031893.071	2427193.753	518.712	EASTERN CEDAR	6
1027	7031880.082	2427197.669	514.302	EASTERN CEDAR	6
1028	7031869.752	2427076.88	516.953	EASTERN CEDAR	7



BROWN REYNOLDS WATFORD
ARCHITECTS
3335 TRAVIS STREET
SUITE 250
DALLAS, TEXAS 75204
214-528-8704
WWW.BRWARCH.COM

PROJ: COPPELL SERVICE CENTER

SUBDIVISION: (LIFE SAFETY PARK)

ADDRESS: 820 S. COPPELL RD.

BLOCK/LOT: LOT 2R / BLOCK 1

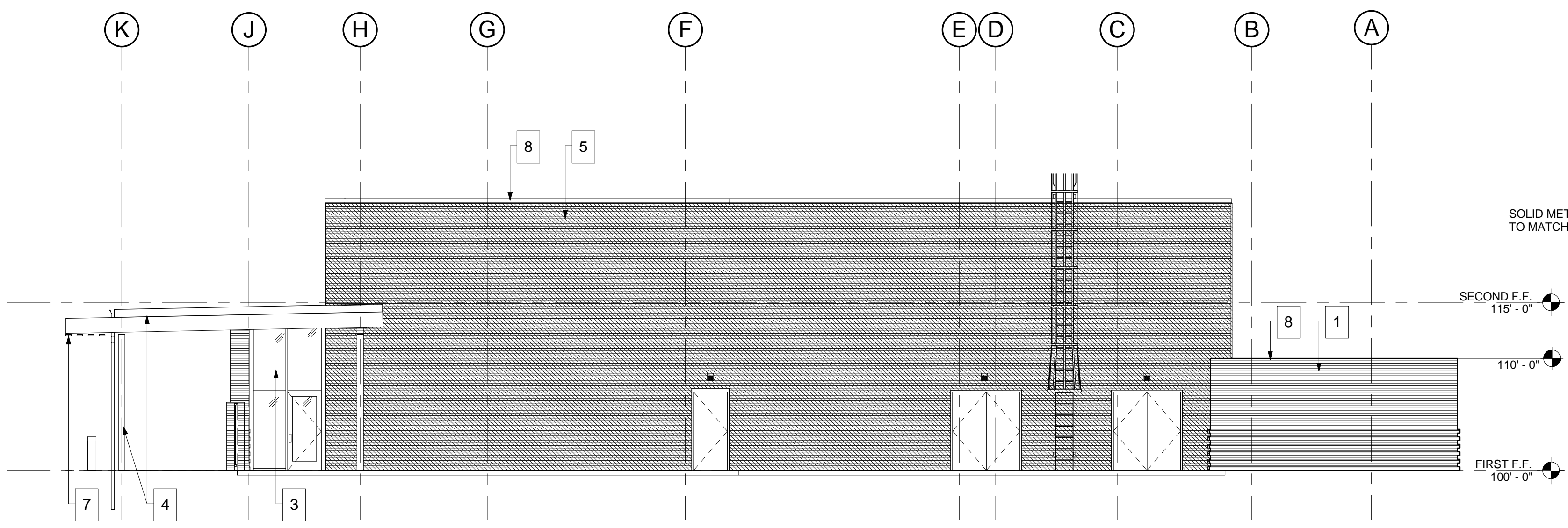
SURVEY/ABSTRACT: 201400050913

ACREAGE: 2.03 ACRES

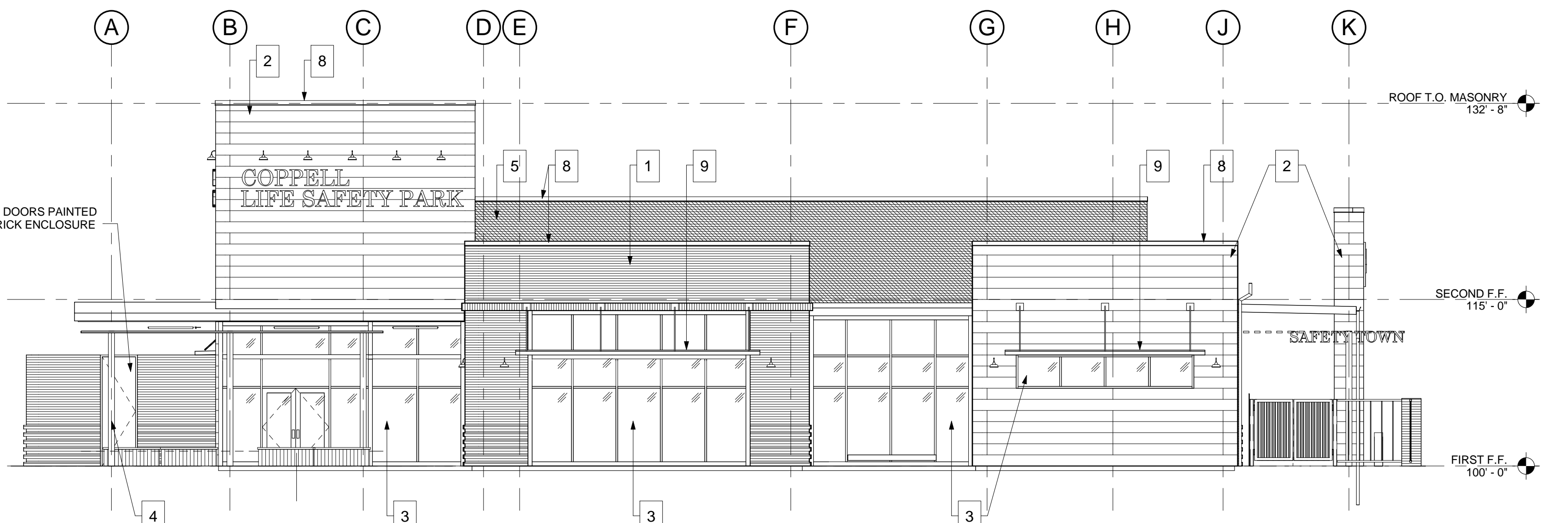
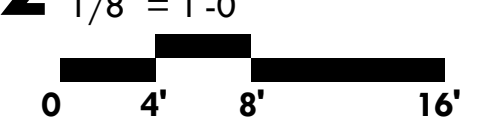
INTERIM REVIEW
DOCUMENTS
NOT INTENDED FOR
BIDDING OR
CONSTRUCTION
PURPOSES
GARY DEVRIES
TX REG. NO. 10212

MARCH 3, 2015

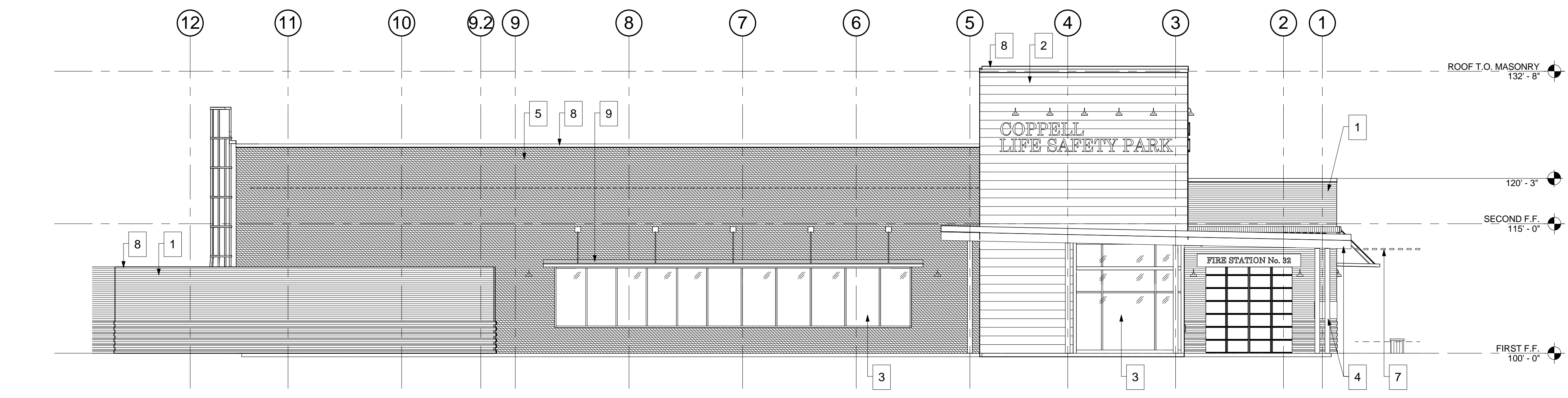
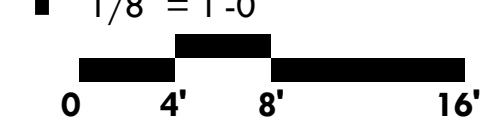
C1.1



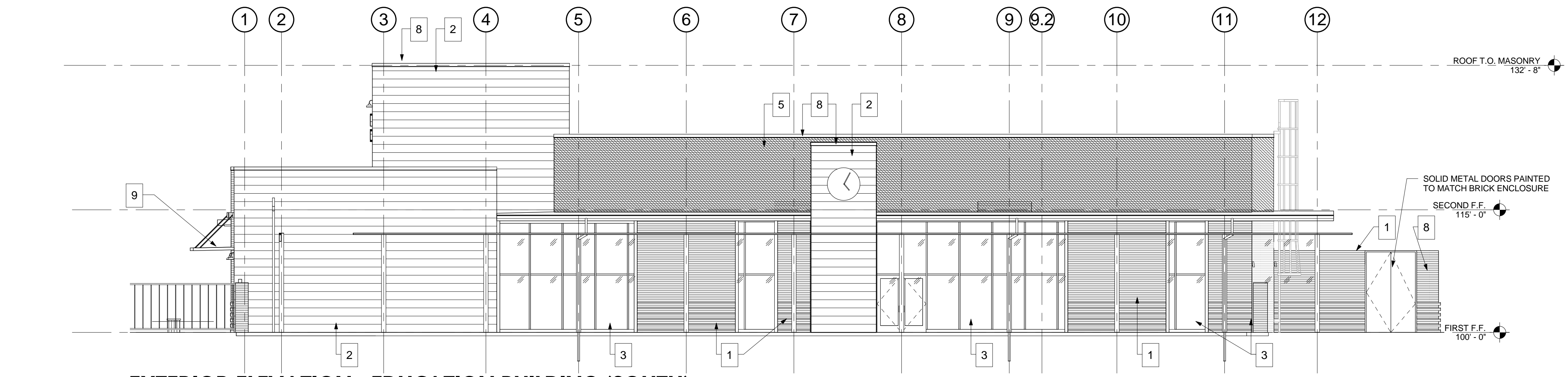
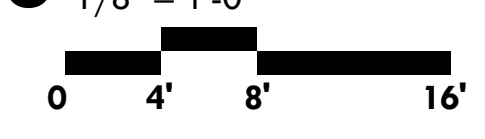
2 EXTERIOR ELEVATION - EDUCATION BUILDING (EAST)



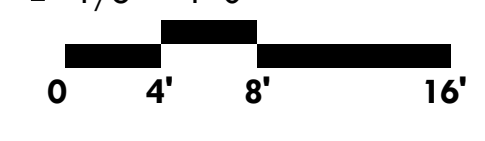
1 EXTERIOR ELEVATION - EDUCATION BUILDING (WEST)



3 EXTERIOR ELEVATION - EDUCATION BUILDING (NORTH)




4 EXTERIOR ELEVATION - EDUCATION BUILDING (SOUTH)



MATERIAL LEGEND - EDUCATION BUILDING				
#	MATERIAL	MANUFACTURER	SPECIFIED COLOR	COLOR
1	BRICK MASONRY	ACME BRICK	RED, BROWN, FLASHED MIX	RED / DARK BROWN
2	FIBER CEMENT WALL PANEL	NICHIHA	VINTAGE WOOD - CEDAR	HONEY BROWN
3	ALUMINUM STOREFRONT & GLAZING	KAWNEER/PPG	CLEAR ANODIZED ALUMINUM / 1" LOW E CLEAR GLAZING	SILVER
4	PAINTED STRUCTURAL STEEL	SHERWIN WILLIAMS	URBANE BRONZE	DARK BROWN
5	BRICK MASONRY	CLOUD CERAMICS	EBONY IRONSSPOT	DARK GREY/MAROON
6	STRUCTURAL WOOD DECK	LOCK - DECK	SOUTHERN PINE WITH PRE-STAINED CEDAR FACE	HONEY BROWN
7	TRELLIS	FIBERON	HORIZON DECKING - IPE	HONEY BROWN
8	PREMANUFACTURED COPING	HICKMAN	DOVE GREY	GREY
9	STANDING SEAM METAL ROOF	BERRIDGE	DARK BRONZE	DARK BROWN
				SIZE
				STANDARD MODULAR 4 X 8
				18" HIGH
				VARIES
				VARIES
				NORMAN OVERSIDED 4 X 12
				3" LAMINATED X 6" WIDE
				2 X 4
				VARIES
				12" GAUGE

MASONRY CALCULATION

EDUCATION BUILDING	59%
TRAIN DEPOT	0%
VEHICLE STORAGE BUILDING	1%
PUBLIC SAFETY BUILDING	87%
HOME SAFETY BUILDING	3%
FACADE BUILDING	17%



BROWN REYNOLDS WATFORD ARCHITECTS
3333 TRAVIS STREET
SUITE 250
DALLAS, TEXAS 75204
214-528-8704
WWW.BRWARCH.COM

PROJ: COPPELL SERVICE CENTER

SUBDIVISION: (LIFE SAFETY PARK)

ADDRESS: 820 S. COPPELL RD.

BLOCK/LOT: LOT 2R / BLOCK 1

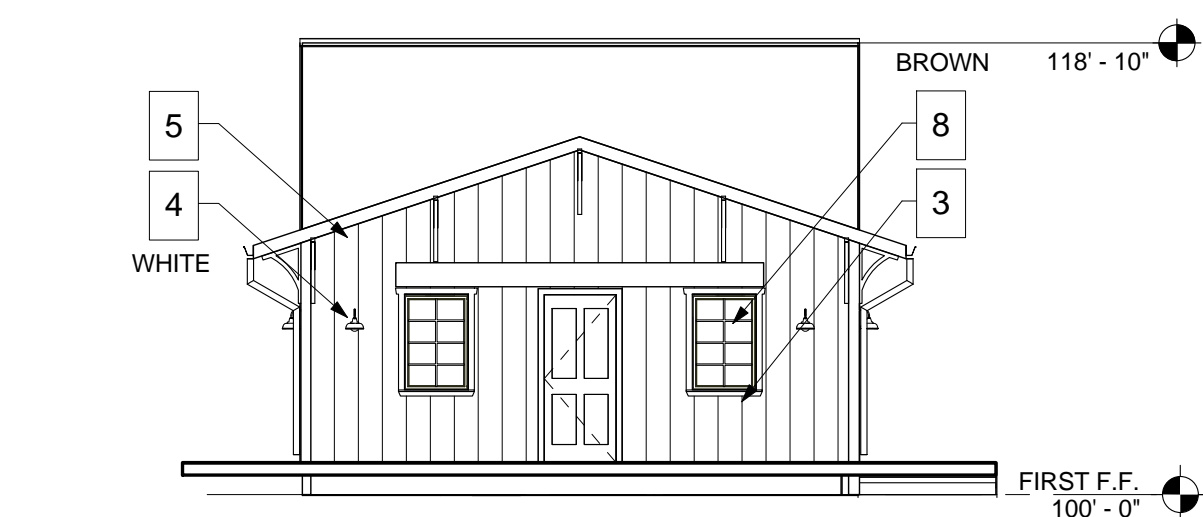
SURVEY/ABSTRACT: 201400050913

ACREAGE: 2.03 ACRES

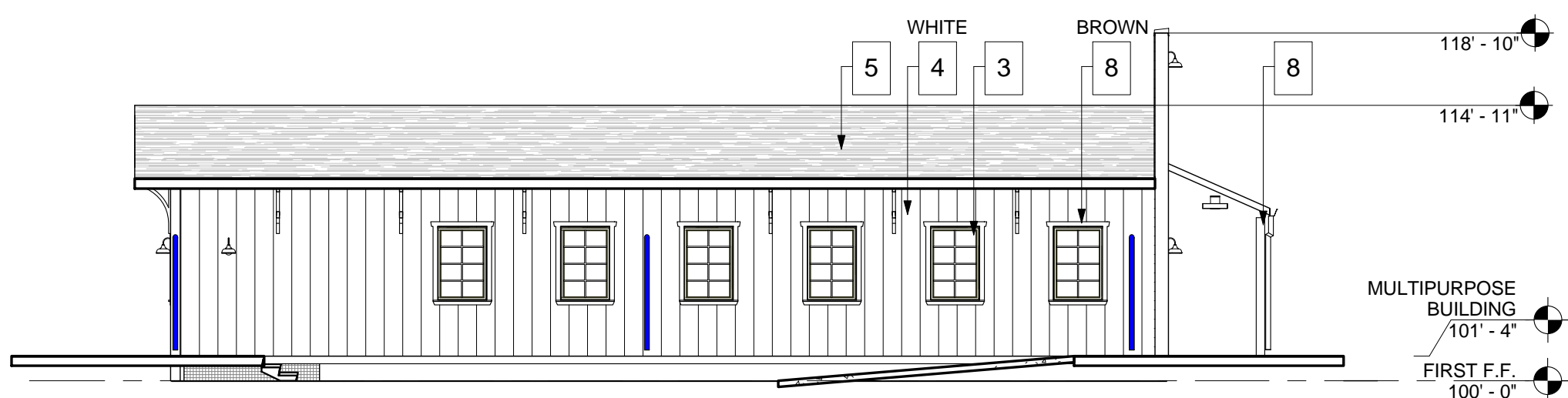
INTERIM REVIEW DOCUMENTS
NOT INTENDED FOR BIDDING OR CONSTRUCTION PURPOSES
GARY DEVRIES
TX REG. NO. 10212

MARCH 3, 2015

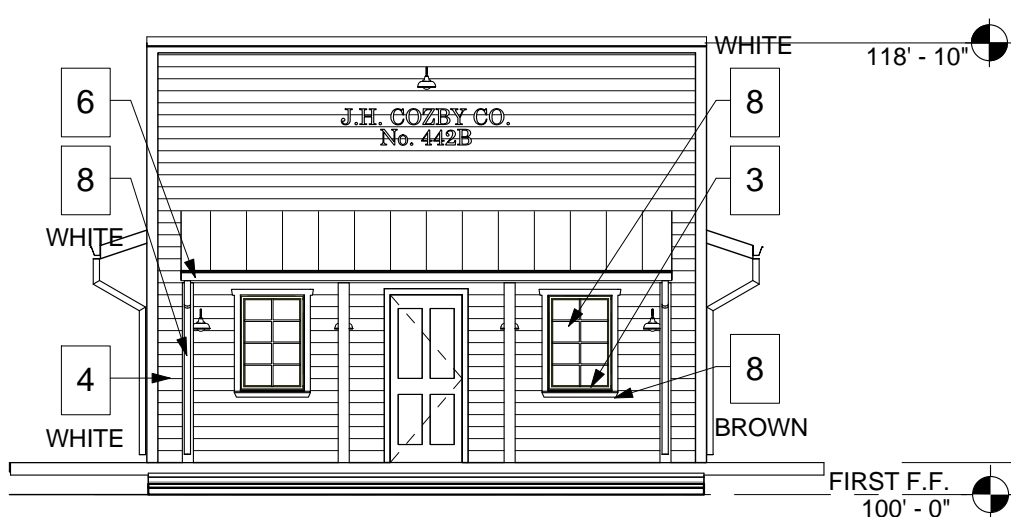
A2.1



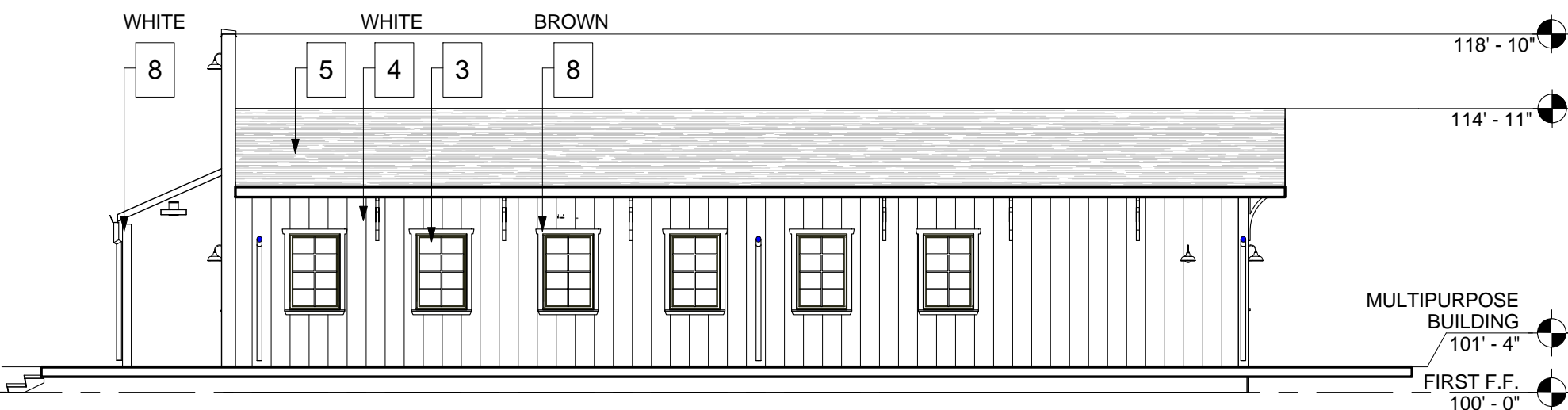
4 EXTERIOR ELEVATION - TRAIN DEPOT (WEST)
1/8" = 1'-0"
0 4' 8' 16'



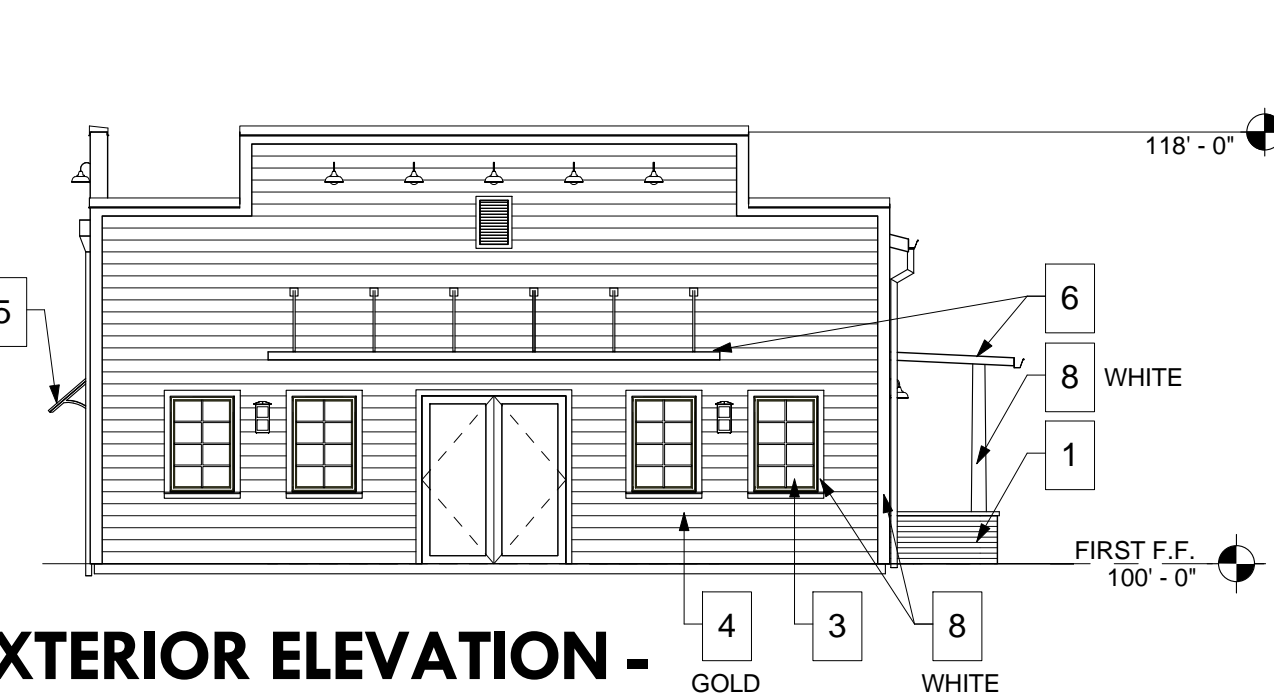
3 EXTERIOR ELEVATION - TRAIN DEPOT (SOUTH)
1/8" = 1'-0"
0 4' 8' 16'



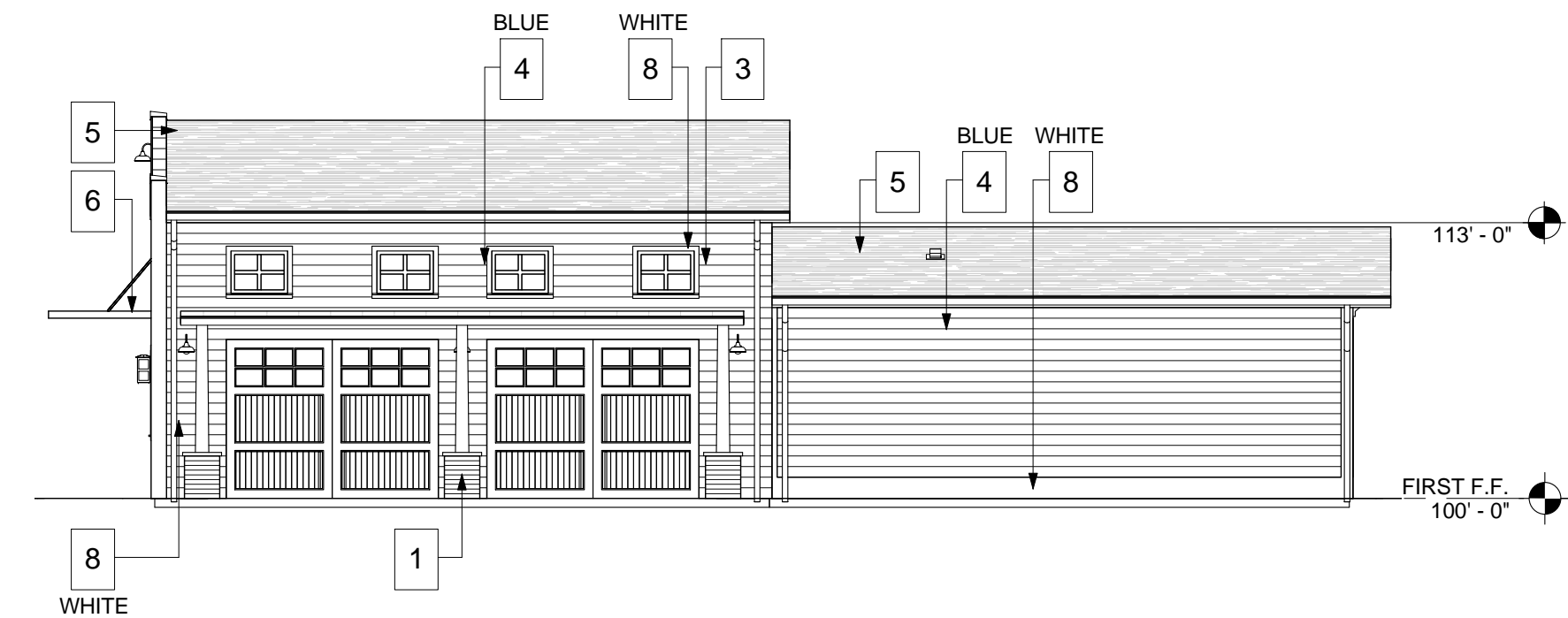
2 EXTERIOR ELEVATION - TRAIN DEPOT (EAST)
1/8" = 1'-0"
0 4' 8' 16'



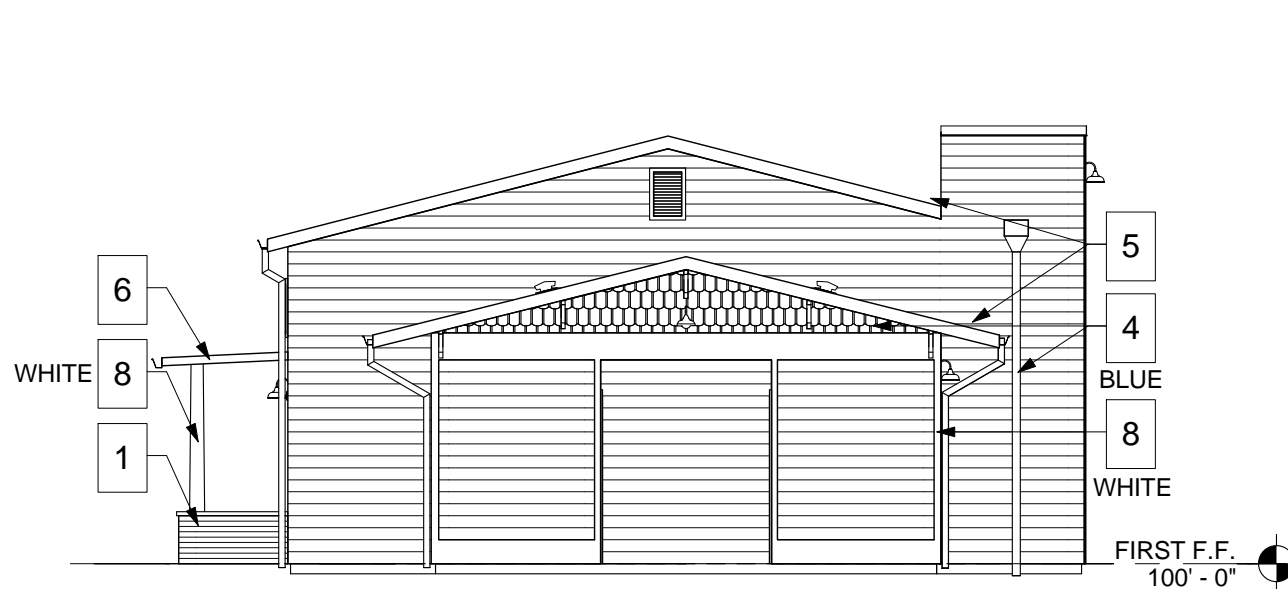
1 EXTERIOR ELEVATION - TRAIN DEPOT (NORTH)
1/8" = 1'-0"
0 4' 8' 16'



8 EXTERIOR ELEVATION - VEHICLE STORAGE (WEST)
1/8" = 1'-0"
0 4' 8' 16'



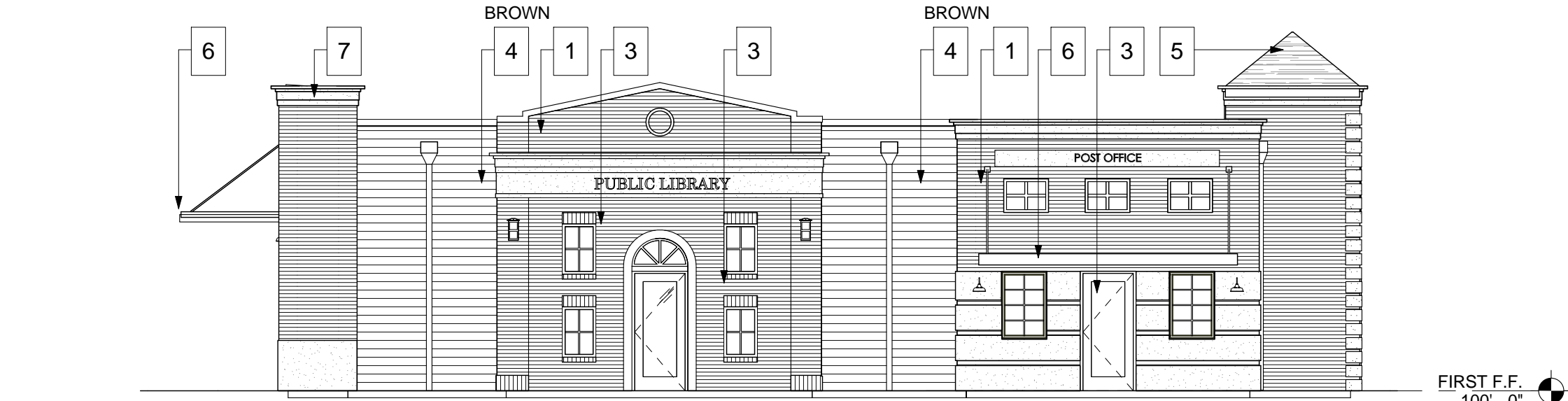
7 EXTERIOR ELEVATION - VEHICLE STORAGE (SOUTH)
1/8" = 1'-0"
0 4' 8' 16'



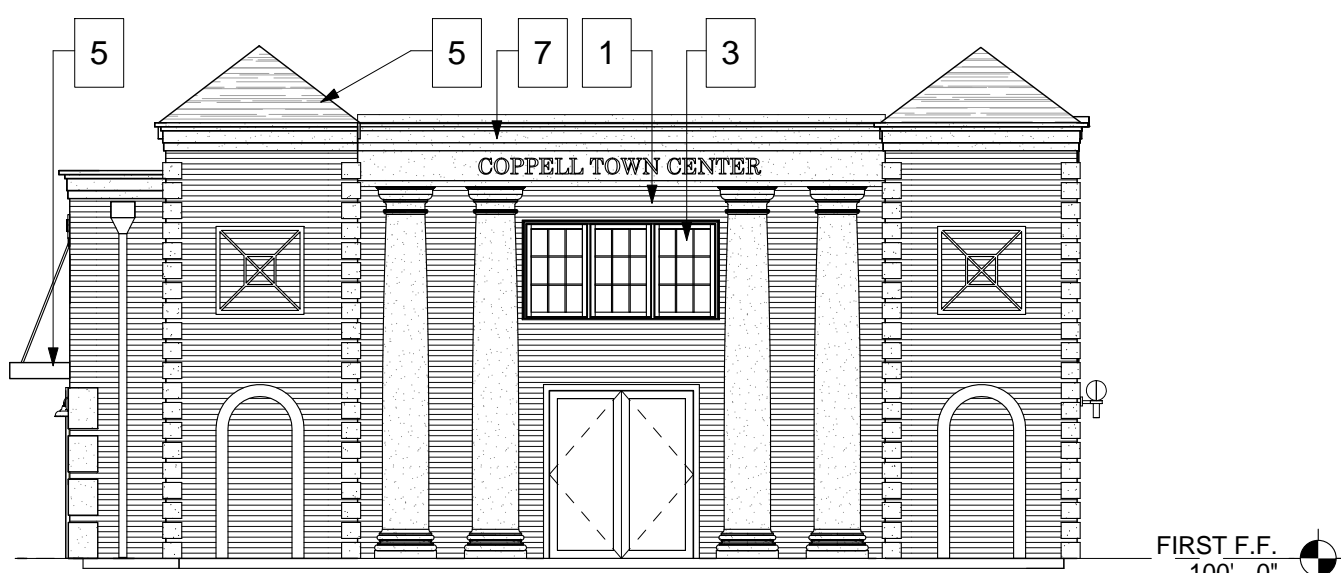
6 EXTERIOR ELEVATION - VEHICLE STORAGE (EAST)
1/8" = 1'-0"
0 4' 8' 16'



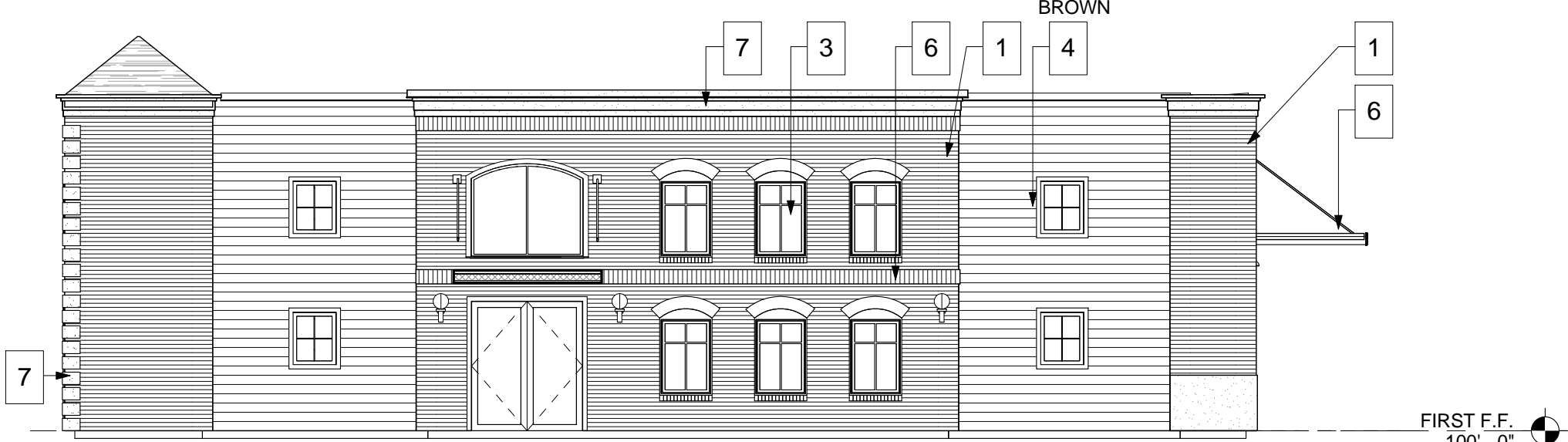
5 EXTERIOR ELEVATION - VEHICLE STORAGE (NORTH)
1/8" = 1'-0"
0 4' 8' 16'



11 EXTERIOR ELEVATION - PUBLIC SAFETY (SOUTH)
1/8" = 1'-0"
0 4' 8' 16'



10 EXTERIOR ELEVATION - PUBLIC SAFETY (EAST)
1/8" = 1'-0"
0 4' 8' 16'



9 EXTERIOR ELEVATION - PUBLIC SAFETY (NORTH)
1/8" = 1'-0"
0 4' 8' 16'



12 EXTERIOR ELEVATION - PUBLIC SAFETY (WEST)
1/8" = 1'-0"
0 4' 8' 16'

MATERIAL LEGEND - LIFE SAFETY PARK				
#	MATERIAL	MANUFACTURER	SPECIFIED COLOR	COLOR
1	BRICK MASONRY	ACME BRICK	ROYAL BIRKDALE	TOWN CENTER RED
2	STONE MASONRY	QUALITY STONE CO.	TEXAS RUST	BEIGE / GOLD / WHITE MIX
3	WINDOW FRAME & LOW E CLEAR GLAZING	ANDERSEN WINDOWS	TERRATONE / WHITE	DARK BEIGE / WHITE
4	FIBER CEMENT SIDING	JAMES HARDIE	ARTIC WHITE, TIMBER BARK, LIGHT MIST, HEATHERED MOSS, BOOTHBAY BLUE	WHITE, BROWN, LIGHT BLUE, LIGHT GREEN, DARK BLUE
5	ROOF SHINGLES	CERTAINTED	COLONIAL SLATE	DARK GREY
6	STANDING SEAM METAL ROOF	BERRIDGE	DARK BRONZE	DARK BROWN
7	CAST STONE	-	-	LIGHT BEIGE
8	FIBER CEMENT TRIM	JAMES HARDIE	ARTIC WHITE / TIMBER BARK	WHITE / BROWN

MASONRY CALCULATION

EDUCATION BUILDING	59%
TRAIN DEPOT	0%
VEHICLE STORAGE BUILDING	1%
PUBLIC SAFETY BUILDING	87%
HOME SAFETY BUILDING	3%
FACADE BUILDING	17%



BROWN REYNOLDS WATFORD ARCHITECTS
3535 TRAVIS STREET
SUITE 250
DALLAS, TEXAS 75204
214-528-8704
WWW.BRWARCH.COM

PROJ: COPPELL SERVICE CENTER

SUBDIVISION: (LIFE SAFETY PARK)

ADDRESS: 820 S. COPPELL RD.

BLOCK/LOT: LOT 2R / BLOCK 1

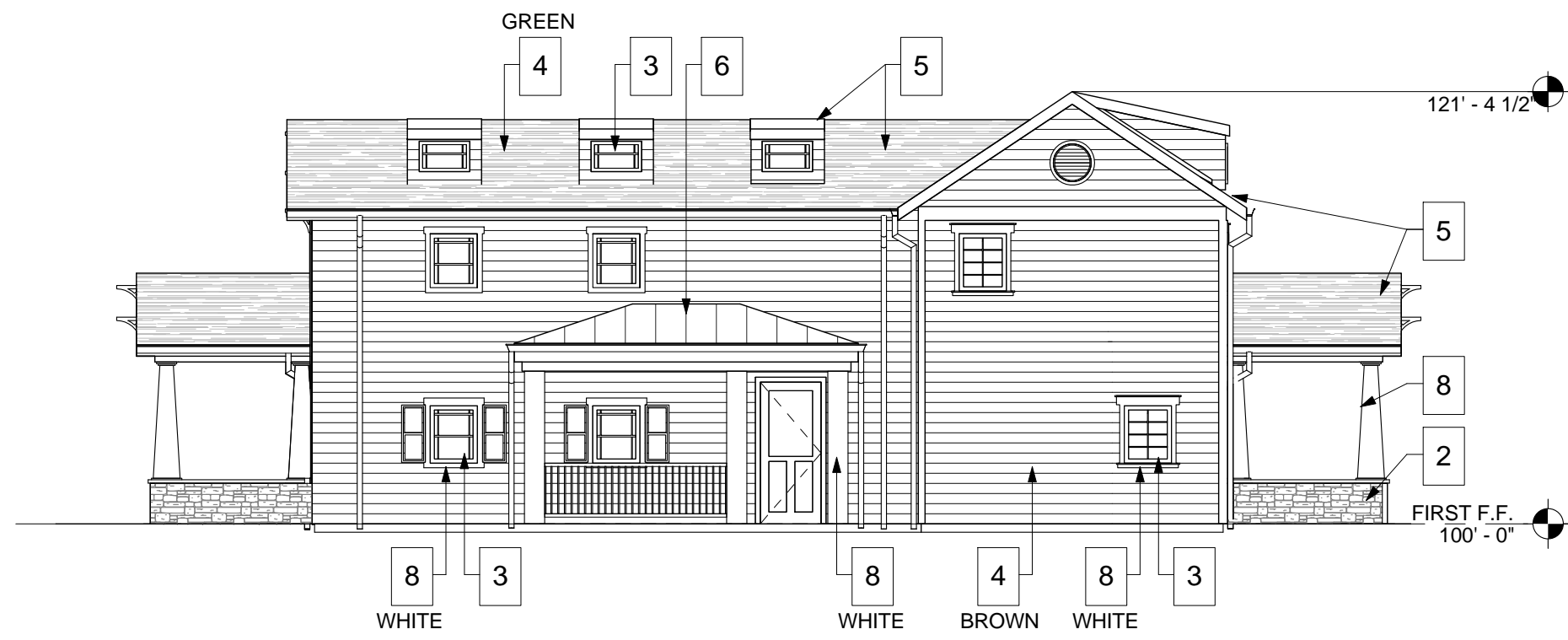
SURVEY/ABSTRACT: 201400050913

ACREAGE: 2.03 ACRES

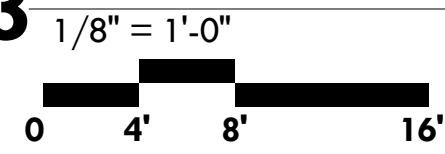
INTERIM REVIEW DOCUMENTS
NOT INTENDED FOR BIDDING OR CONSTRUCTION PURPOSES
GARY DEVRIES
TX REG. NO. 10212

MARCH 3, 2015

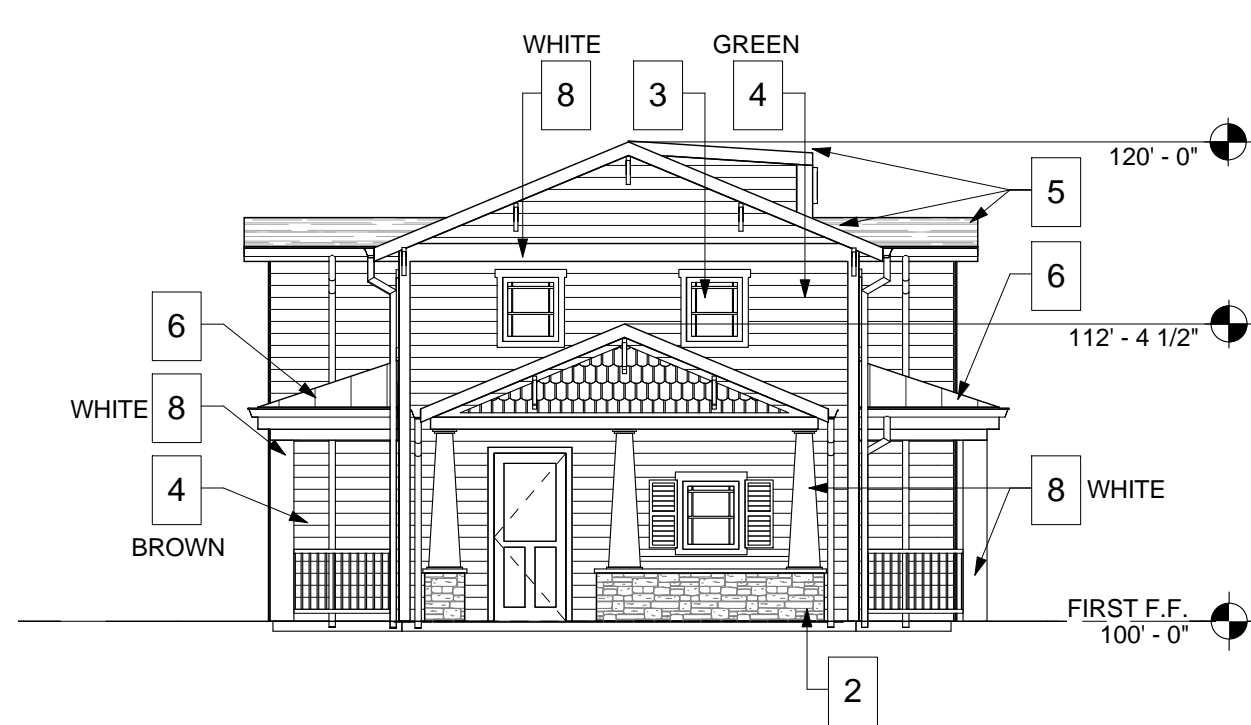
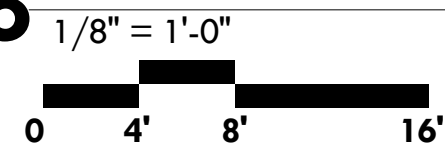
A2.2



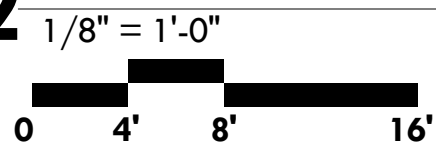
3 EXTERIOR ELEVATION - HOME SAFETY (SOUTH)



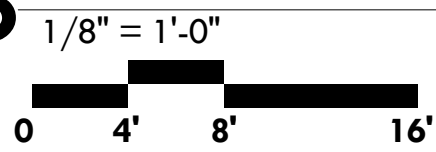
6 EXTERIOR ELEVATION - FACADE (SOUTH)



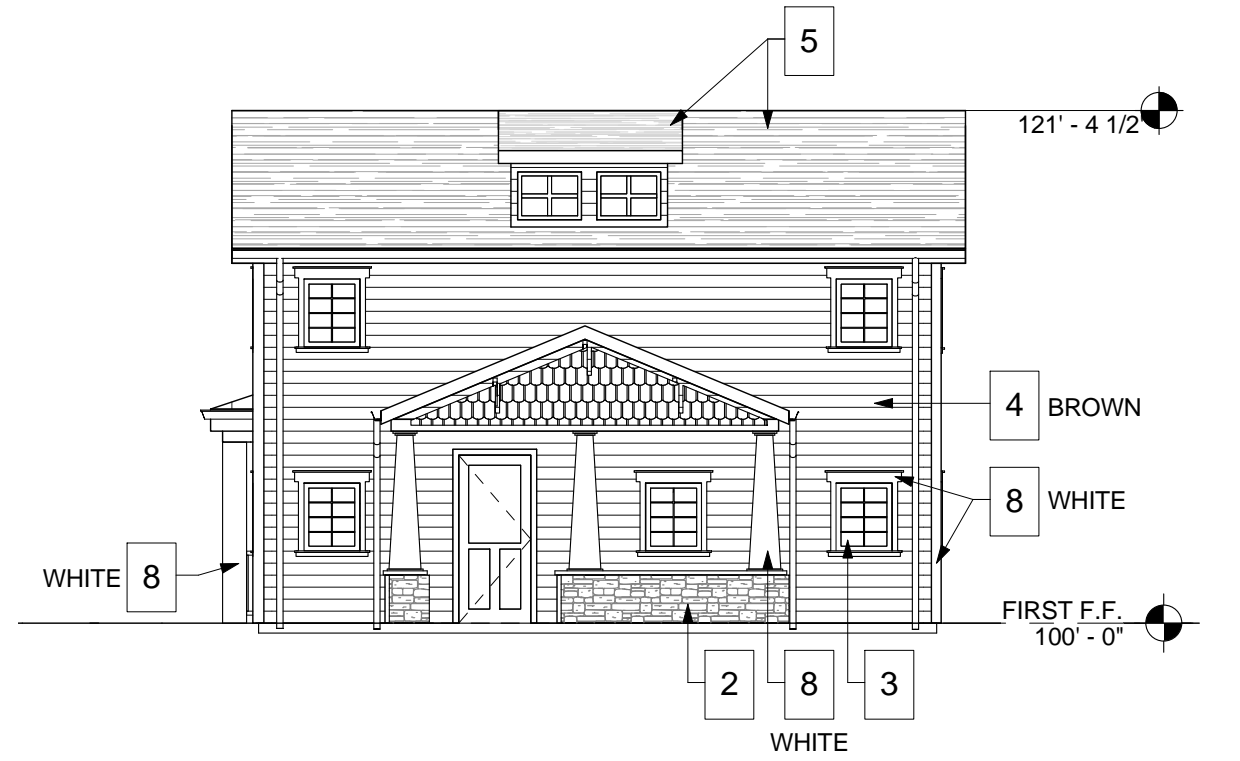
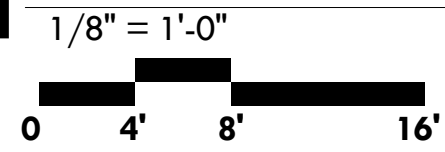
2 EXTERIOR ELEVATION - HOME SAFETY (WEST)



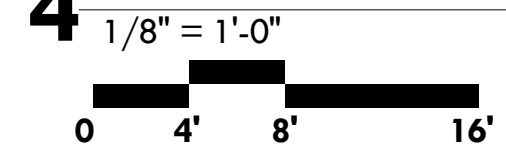
5 EXTERIOR ELEVATION - FACADE (NORTH)



1 EXTERIOR ELEVATION - HOME SAFETY (NORTH)



EXTERIOR ELEVATION - HOME SAFETY (EAST)



MASONRY CALCULATION

EDUCATION BUILDING	59%
TRAIN DEPOT	0%
VEHICLE STORAGE BUILDING	1%
PUBLIC SAFETY BUILDING	87%
HOME SAFETY BUILDING	3%
FACADE BUILDING	17%

MATERIAL LEGEND - LIFE SAFETY PARK					
#	MATERIAL	MANUFACTURER	SPECIFIED COLOR	COLOR	SIZE
1	BRICK MASONRY	ACME BRICK	ROYAL BIRKDALE	TOWN CENTER RED	STANDARD MODULAR 4 X 8
2	STONE MASONRY	QUALITY STONE CO.	TEXAS RUST	BEIGE / GOLD / WHITE MIX	VARIES
3	WINDOW FRAME & LOW E CLEAR GLAZING	ANDERSEN WINDOWS	TERRATONE / WHITE	DARK BEIGE / WHITE	VARIES
4	FIBER CEMENT SIDING	JAMES HARDIE	ARTIC WHITE, TIMBER BARK, LIGHT MIST, HEATHERED MOSS, BOOTHBAY BLUE	WHITE, BROWN, LIGHT BLUE, LIGHT GREEN, DARK BLUE	4" WIDE
5	ROOF SHINGLES	CERTAINTeed	COLONIAL SLATE	DARK GREY	13-1/4" X 39-3/8"
6	STANDING SEAM METAL ROOF	BERRIDGE	DARK BRONZE	DARK BROWN	VARIES
7	CAST STONE	-	-	LIGHT BEIGE	VARIES
8	FIBER CEMENT TRIM	JAMES HARDIE	ARTIC WHITE / TIMBER BARK	WHITE / BROWN	5-1/4" X 3-1/2"



BROWN REYNOLDS WATFORD ARCHITECTS
3335 TRAVIS STREET
SUITE 250
DALLAS, TEXAS 75204
214-528-8704
WWW.BRWARCH.COM

PROJ: COPPELL SERVICE CENTER

SUBDIVISION: (LIFE SAFETY PARK)

ADDRESS: 820 S. COPPELL RD.

BLOCK/LOT: LOT 2R / BLOCK 1

SURVEY/ABSTRACT: 201400050913

ACREAGE: 2.03 ACRES

INTERIM REVIEW
DOCUMENTS
NOT INTENDED FOR
BIDDING OR
CONSTRUCTION
PURPOSES
GARY DEVRIES
TX REG. NO. 10212

MARCH 3, 2015

A2.3