



1 Front - East Elevation  
3/32" = 1'-0"



2 Rear - West Elevation  
3/32" = 1'-0"

REGISTERED ARCHITECT

GREG M. GUERIN

2011

STATE OF TEXAS

02-24-16

Greg Guerin Architect TX License # 22011

EAST STAR DESIGN

P.O. BOX 53

FORNEY, TX 75126 USA

(214) 469-7176

(972) 200-7340

www.EastStarDesign.com

Architect@EastStarDesign.com

MATERIALS

CAST STONE

ST-1

PEBBLE BY ROCKCAST

PEBBLE

BY ROCKCAST

1/4" FASTRACK CLIP SYSTEM

16 X 24 X 1 1/4"

ST-2

CARMEL BY ROCKCAST

CARMEL

BY ROCKCAST

1/4" FASTRACK CLIP SYSTEM

16 X 24 X 1 1/4"

ST-3

BROWNSTONE BY ROCKCAST

BROWNSTONE

BY ROCKCAST

1/4" FASTRACK CLIP SYSTEM

16 X 24 X 1 1/4"

ST-1 (ALTERNATE)

PEBBLE BY ROCKCAST

SNOWCAP

BY HERITAGE CASTSTONE

THIN ADHERED MASONRY

12 X 24 X 1 1/4"

ST-2 (ALTERNATE)

CARMEL BY ROCKCAST

BUCKSKIN

BY HERITAGE CASTSTONE

THIN ADHERED MASONRY

12 X 24 X 1 1/4"

ST-3 (ALTERNATE)

BROWNSTONE BY ROCKCAST

LEATHER

BY HERITAGE CASTSTONE

THIN ADHERED MASONRY

12 X 24 X 1 1/4"

METAL

M-1

ALMOND

BERRIDGE

COFFING / FLASHING

M-2

ALUMINUM GREY

4'-XST-30

ALPOLIG METAL - COMPOSITE

METAL FASCIA / CANOPY AWNING

STORE FRONT

SF-1

STORE FRONT FRAME

CHAMPAGNE ANODIZED PLUS 4

YKK AP

G-1

GLASS

SOLARBAN 61 CLEAR

PPG

P-1

PAINT

PEBBLE BY ROCKCAST

P-2

PAINT

CARMEL BY ROCKCAST

P-3

PAINT

BROWNSTONE BY ROCKCAST

M-1

WOOD RAINSCREEN

DARK STAIN

GROUT / MORTAR TO MATCH ADJACENT CASTSTONE

METAL DOORS TO BE PAINTED TO MATCH ADJACENT CASTSTONE

| No. | Description | Date |
|-----|-------------|------|
|     |             |      |
|     |             |      |
|     |             |      |
|     |             |      |
|     |             |      |
|     |             |      |
|     |             |      |

Sun Holdings  
Point West Development  
I-635 & Beltline Coppell, TX

Elevations

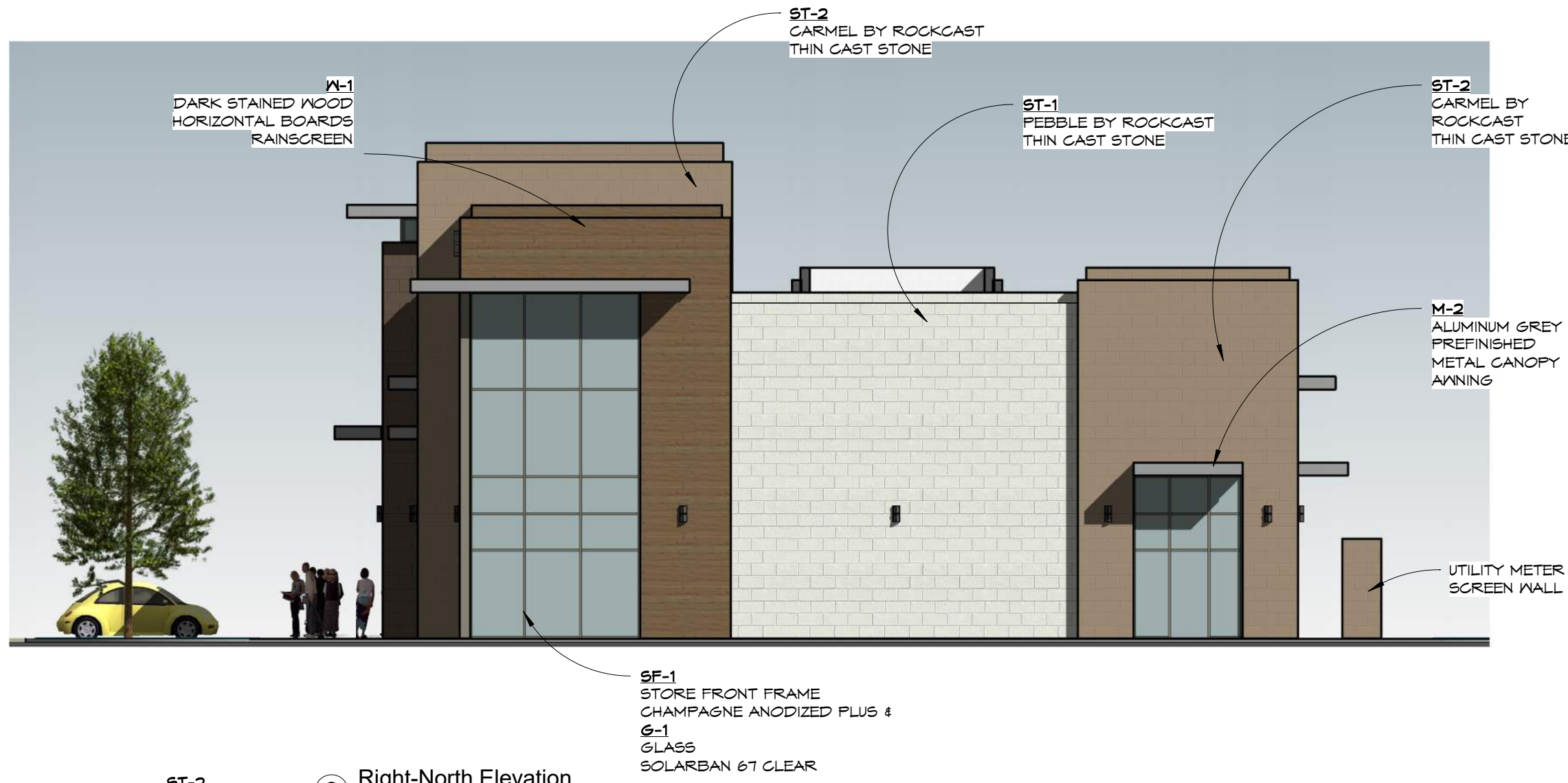
|                |                      |
|----------------|----------------------|
| Project number | 14020                |
| Date           | 2/24/2016 9:37:40 AM |
| Drawn by       | GG                   |
| Checked by     | -                    |

A-4

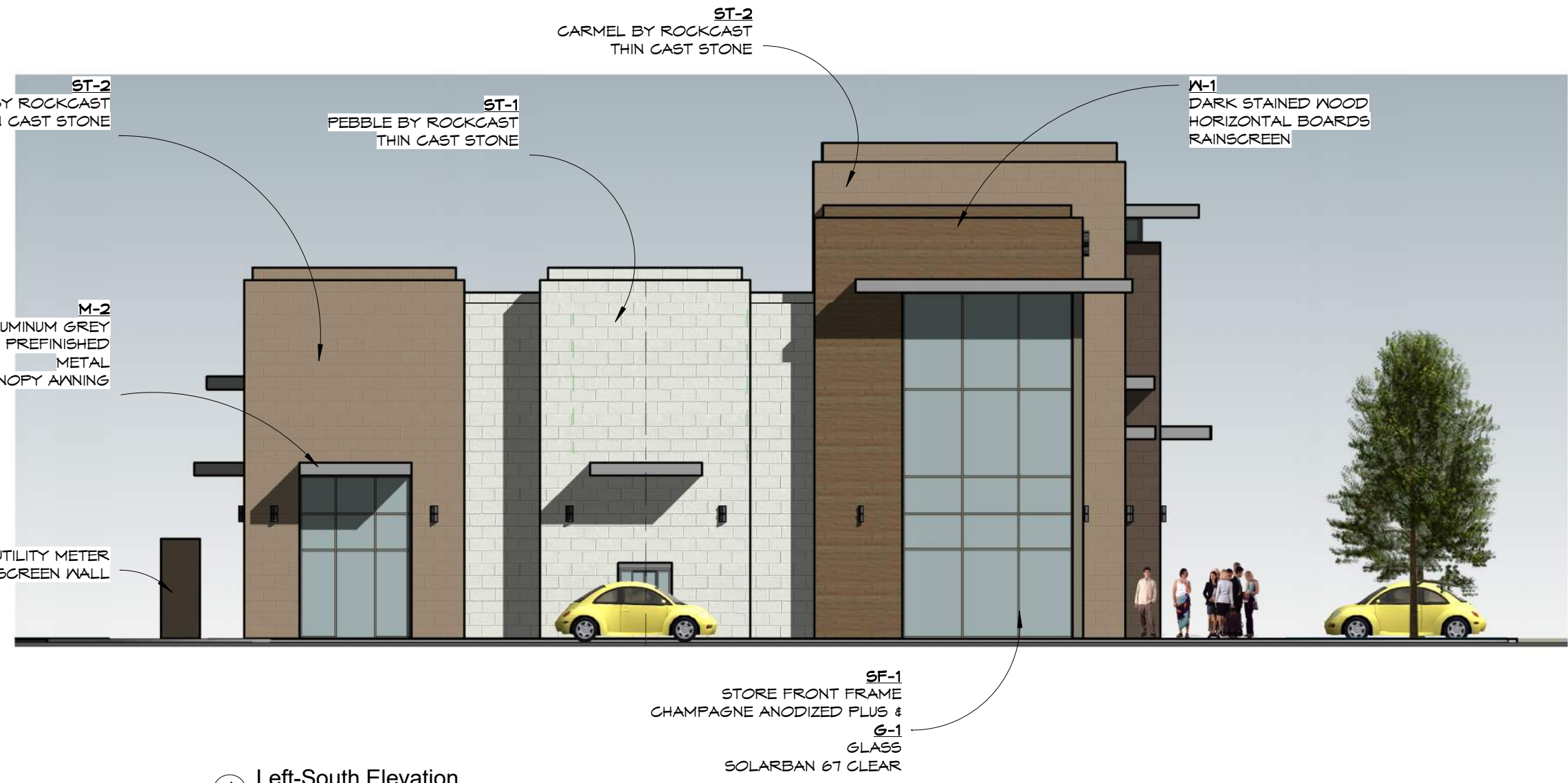
|       |              |
|-------|--------------|
| Scale | As indicated |
|-------|--------------|

2/24/2016 9:37:40 AM

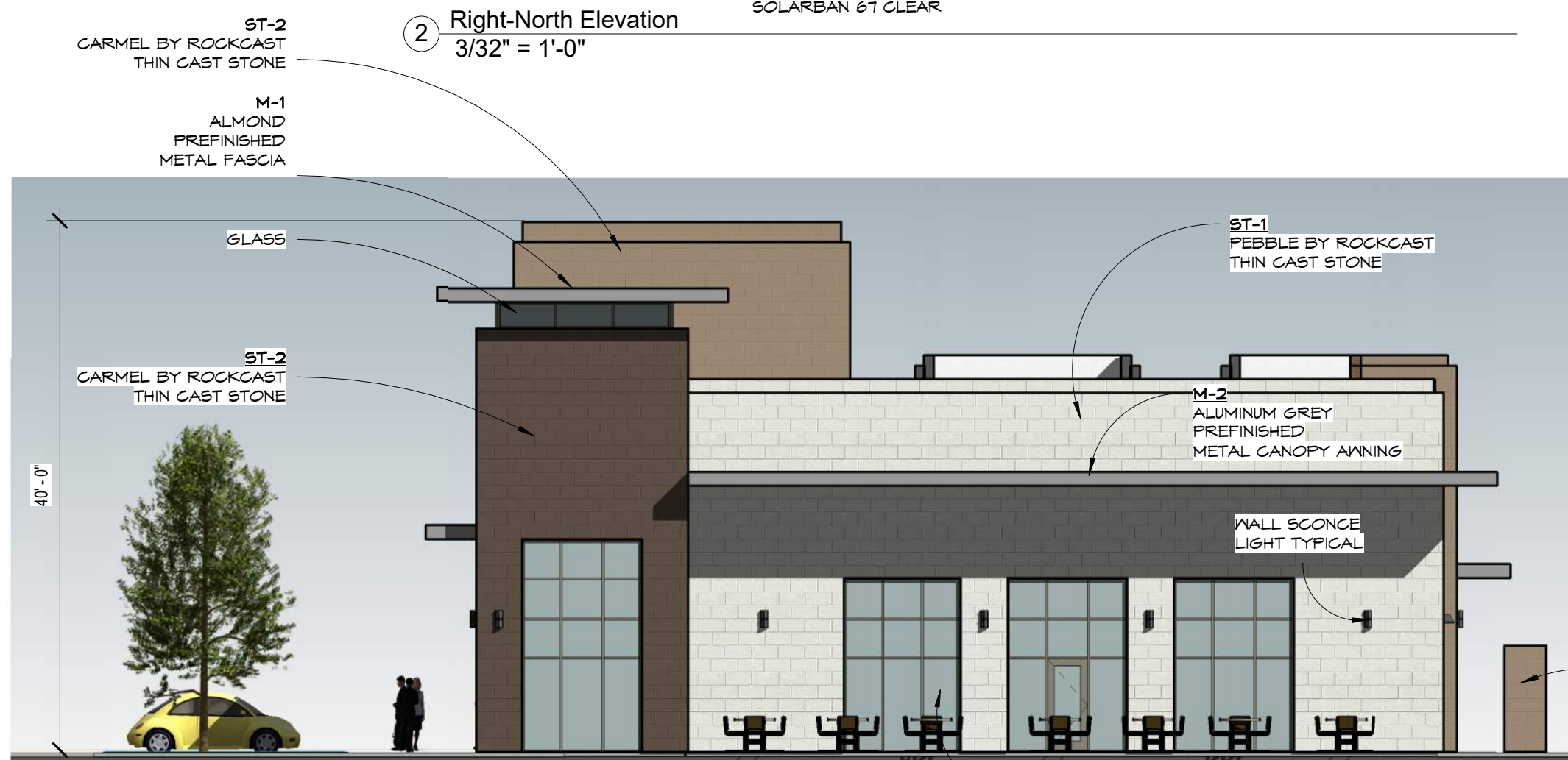




② Right-North Elevation  
3/32" = 1'-0"



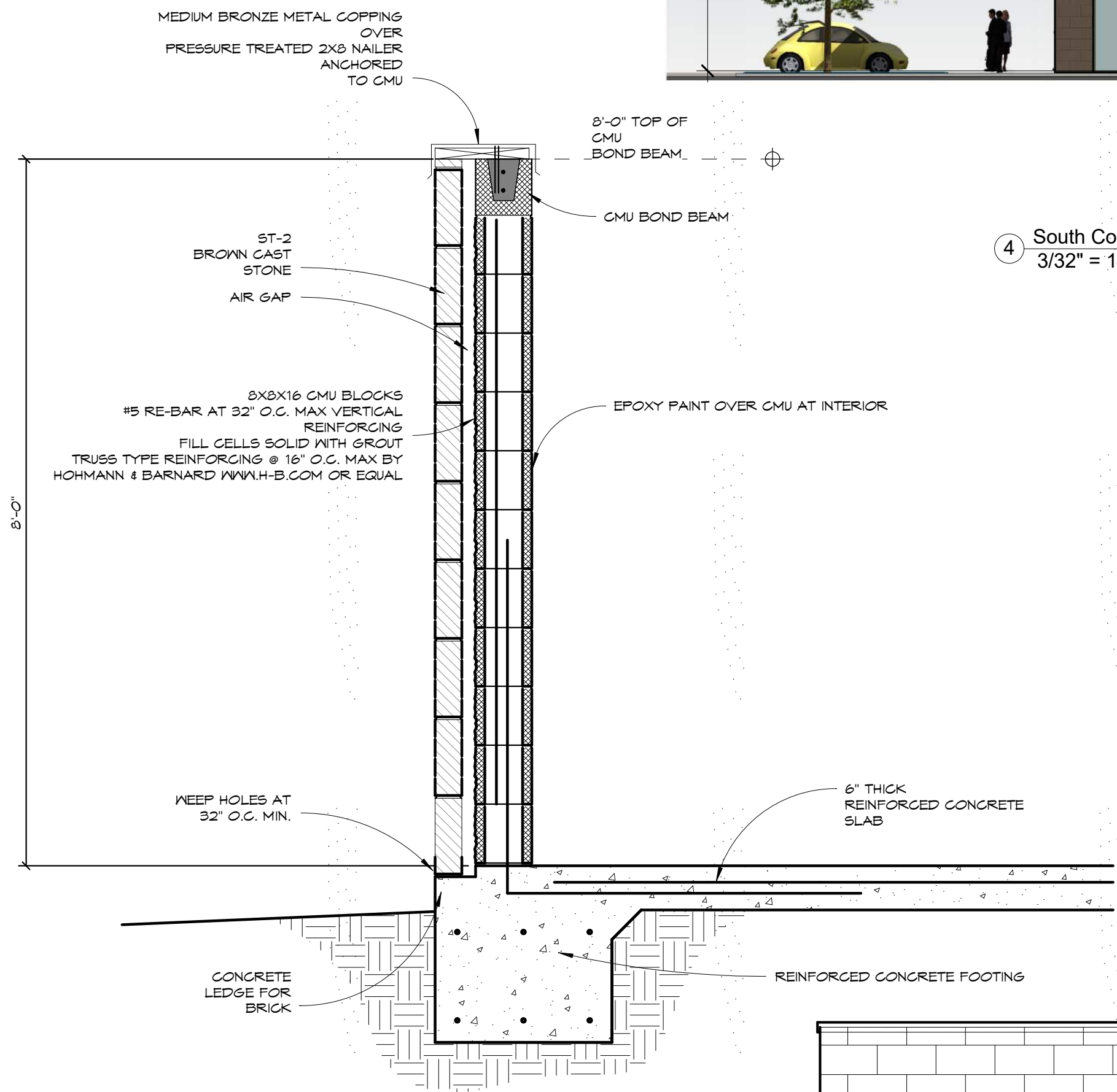
① Left-South Elevation  
3/32" = 1'-0"



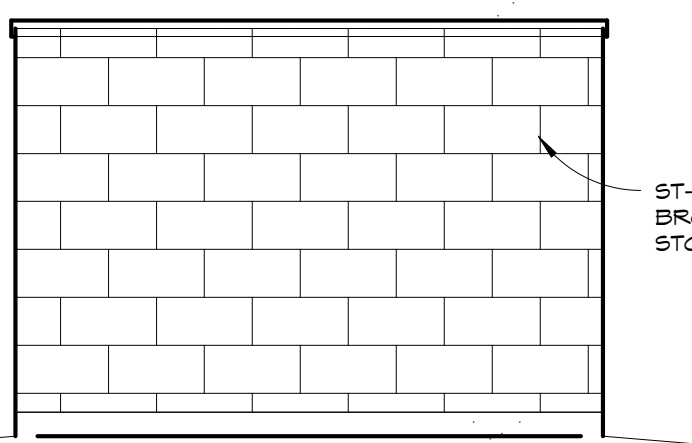
④ South Courtyard Elevation  
3/32" = 1'-0"



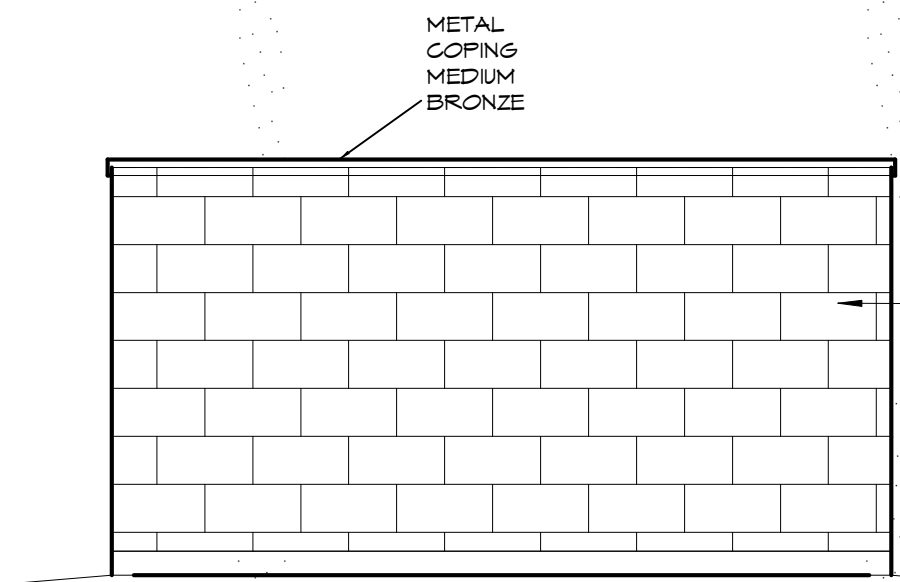
③ North Courtyard Elevation  
3/32" = 1'-0"



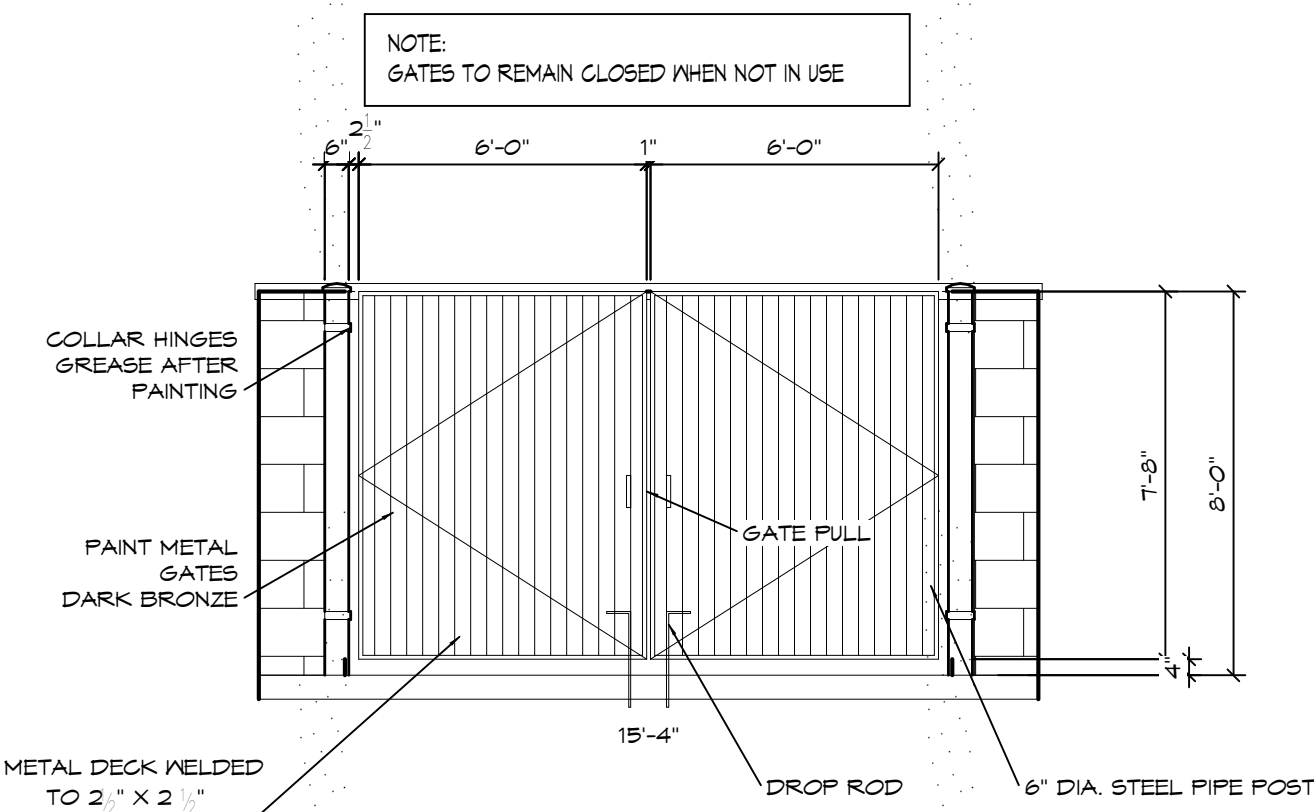
E WALL SECTION  
Scale: 3/4" = 1'-0"



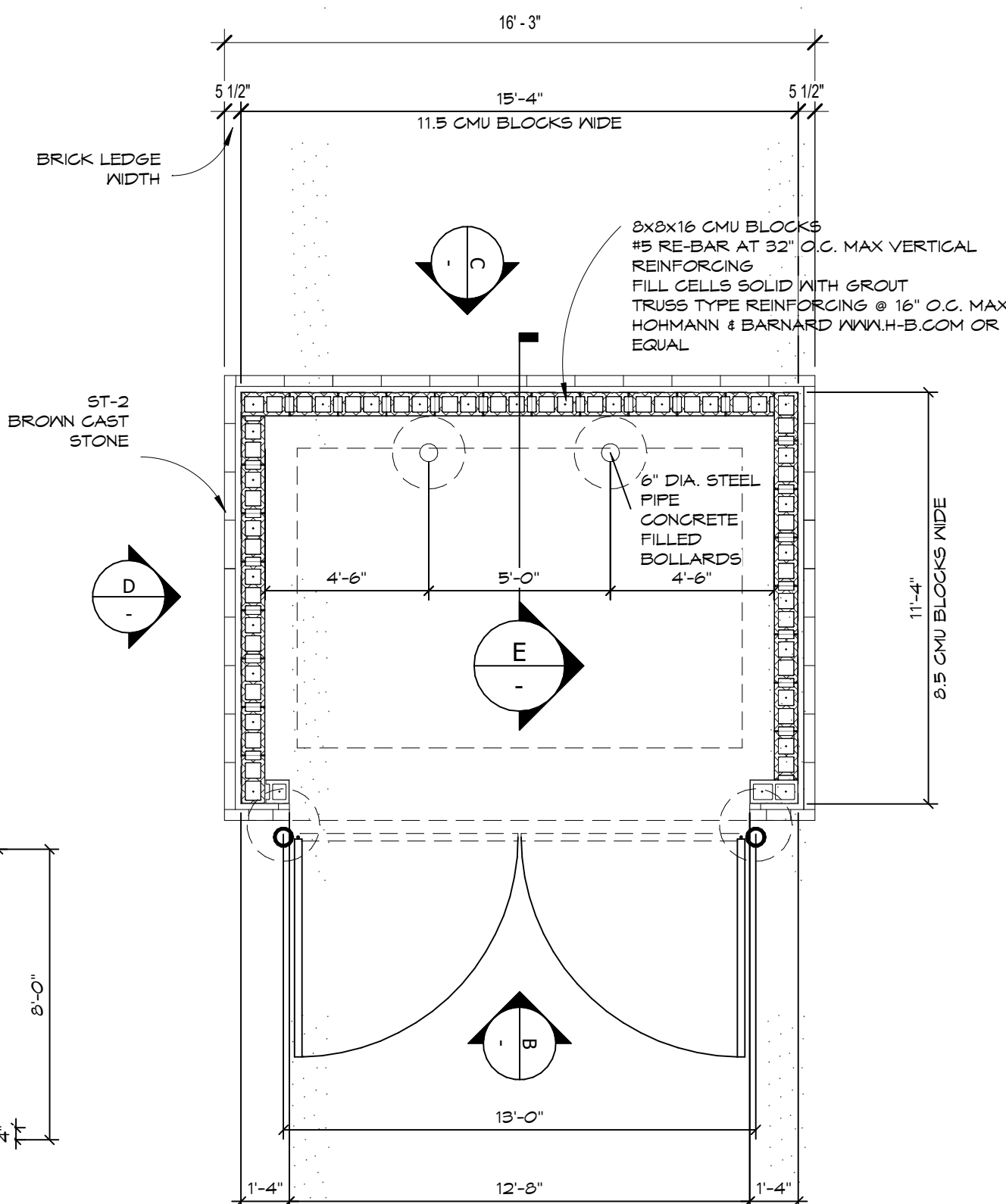
D SIDE EXTERIOR ELEVATION  
Scale: 1/4" = 1'-0"



C REAR EXTERIOR ELEVATION  
Scale: 1/4" = 1'-0"



B FRONT EXTERIOR ELEVATION  
Scale: 1/4" = 1'-0"



A FLOOR PLAN  
Scale: 1/4" = 1'-0"



02-24-16

Greg Guerin Architect TX License # 22011



EAST STAR DESIGN  
P.O. BOX 53  
FORNEY, TX 75126 USA  
(214) 469-7176  
(972) 200-7340  
www.EastStarDesign.com  
Architect@EastStarDesign.com

## MATERIALS

### CAST STONE

ST-1  
PEBBLE BY ROCKCAST  
BY ROCKCAST  
WV FASTRACK CLIP SYSTEM  
16 X 24 X 1 1/4

ST-2  
CARAMEL BY ROCKCAST  
BY ROCKCAST  
WV FASTRACK CLIP SYSTEM  
16 X 24 X 1 1/4

ST-3  
BROWNSTONE BY ROCKCAST  
BY ROCKCAST  
WV FASTRACK CLIP SYSTEM  
16 X 24 X 1 1/4

### METAL

M-1  
ALMOND  
BERKSHIRE  
COPPING / FLASHING

M-2  
ALUMINUM GREY  
4-AST-30  
ALPOLIG METAL - COMPOSITE  
METAL FASCIA / CANOPY AWNING

### STORE FRONT

SF-1  
STORE FRONT FRAME  
CHAMPAGNE ANODIZED PLUS  
YKK AP

### GLASS

G-1  
GLASS  
SOLARBAN 61 CLEAR  
PPG

### PAINT

P-1  
PAINT -  
PEBBLE BY ROCKCAST

P-2  
PAINT -  
CARAMEL BY ROCKCAST

P-3  
PAINT -  
BROWNSTONE BY ROCKCAST

### WOOD

W-1  
WOOD RAINSCREEN  
DARK STAIN

W-2  
WOOD RAINSCREEN  
DARK STAIN

W-3  
WOOD RAINSCREEN  
DARK STAIN

W-4  
WOOD RAINSCREEN  
DARK STAIN

W-5  
WOOD RAINSCREEN  
DARK STAIN

W-6  
WOOD RAINSCREEN  
DARK STAIN

W-7  
WOOD RAINSCREEN  
DARK STAIN

W-8  
WOOD RAINSCREEN  
DARK STAIN

W-9  
WOOD RAINSCREEN  
DARK STAIN

W-10  
WOOD RAINSCREEN  
DARK STAIN

W-11  
WOOD RAINSCREEN  
DARK STAIN

W-12  
WOOD RAINSCREEN  
DARK STAIN

W-13  
WOOD RAINSCREEN  
DARK STAIN

W-14  
WOOD RAINSCREEN  
DARK STAIN

W-15  
WOOD RAINSCREEN  
DARK STAIN

W-16  
WOOD RAINSCREEN  
DARK STAIN

W-17  
WOOD RAINSCREEN  
DARK STAIN

W-18  
WOOD RAINSCREEN  
DARK STAIN

W-19  
WOOD RAINSCREEN  
DARK STAIN

W-20  
WOOD RAINSCREEN  
DARK STAIN

W-21  
WOOD RAINSCREEN  
DARK STAIN

W-22  
WOOD RAINSCREEN  
DARK STAIN

W-23  
WOOD RAINSCREEN  
DARK STAIN

W-24  
WOOD RAINSCREEN  
DARK STAIN

W-25  
WOOD RAINSCREEN  
DARK STAIN

W-26  
WOOD RAINSCREEN  
DARK STAIN

W-27  
WOOD RAINSCREEN  
DARK STAIN

W-28  
WOOD RAINSCREEN  
DARK STAIN

W-29  
WOOD RAINSCREEN  
DARK STAIN

W-30  
WOOD RAINSCREEN  
DARK STAIN

W-31  
WOOD RAINSCREEN  
DARK STAIN

W-32  
WOOD RAINSCREEN  
DARK STAIN

W-33  
WOOD RAINSCREEN  
DARK STAIN

W-34  
WOOD RAINSCREEN  
DARK STAIN

W-35  
WOOD RAINSCREEN  
DARK STAIN

W-36  
WOOD RAINSCREEN  
DARK STAIN

W-37  
WOOD RAINSCREEN  
DARK STAIN

W-38  
WOOD RAINSCREEN  
DARK STAIN

W-39  
WOOD RAINSCREEN  
DARK STAIN

W-40  
WOOD RAINSCREEN  
DARK STAIN

W-41  
WOOD RAINSCREEN  
DARK STAIN

W-42  
WOOD RAINSCREEN  
DARK STAIN

W-43  
WOOD RAINSCREEN  
DARK STAIN

W-44  
WOOD RAINSCREEN  
DARK STAIN

W-45  
WOOD RAINSCREEN  
DARK STAIN

W-46  
WOOD RAINSCREEN  
DARK STAIN

W-47  
WOOD RAINSCREEN  
DARK STAIN

W-48  
WOOD RAINSCREEN  
DARK STAIN

W-49  
WOOD RAINSCREEN  
DARK STAIN

W-50  
WOOD RAINSCREEN  
DARK STAIN

W-51  
WOOD RAINSCREEN  
DARK STAIN

W-52  
WOOD RAINSCREEN  
DARK STAIN

W-53  
WOOD RAINSCREEN  
DARK STAIN

W-54  
WOOD RAINSCREEN  
DARK STAIN

W-55  
WOOD RAINSCREEN  
DARK STAIN

W-56  
WOOD RAINSCREEN  
DARK STAIN

W-57  
WOOD RAINSCREEN  
DARK STAIN

W-58  
WOOD RAINSCREEN  
DARK STAIN

W-59  
WOOD RAINSCREEN  
DARK STAIN

W-60  
WOOD RAINSCREEN  
DARK STAIN

W-61  
WOOD RAINSCREEN  
DARK STAIN

W-62  
WOOD RAINSCREEN  
DARK STAIN

W-63  
WOOD RAINSCREEN  
DARK STAIN

W-64  
WOOD RAINSCREEN  
DARK STAIN

W-65  
WOOD RAINSCREEN  
DARK STAIN

W-66  
WOOD RAINSCREEN  
DARK STAIN

W-67  
WOOD RAINSCREEN  
DARK STAIN

W-68  
WOOD RAINSCREEN  
DARK STAIN

W-69  
WOOD RAINSCREEN  
DARK STAIN

W-70  
WOOD RAINSCREEN  
DARK STAIN

W-71  
WOOD RAINSCREEN  
DARK STAIN

W-72  
WOOD RAINSCREEN  
DARK STAIN

W-73  
WOOD RAINSCREEN  
DARK STAIN

W-74  
WOOD RAINSCREEN  
DARK STAIN

W-75  
WOOD RAINSCREEN  
DARK STAIN

W-76  
WOOD RAINSCREEN  
DARK STAIN

W-77  
WOOD RAINSCREEN  
DARK STAIN

W-78  
WOOD RAINSCREEN  
DARK STAIN

W-79  
WOOD RAINSCREEN  
DARK STAIN

W-80  
WOOD RAINSCREEN  
DARK STAIN

W-81  
WOOD RAINSCREEN  
DARK STAIN

W-82  
WOOD RAINSCREEN  
DARK STAIN

W-83  
WOOD RAINSCREEN  
DARK STAIN

W-84  
WOOD RAINSCREEN  
DARK STAIN

W-85  
WOOD RAINSCREEN  
DARK STAIN

W-86  
WOOD RAINSCREEN  
DARK STAIN

W-87  
WOOD RAINSCREEN  
DARK STAIN

W-88  
WOOD RAINSCREEN  
DARK STAIN

W-89  
WOOD RAINSCREEN  
DARK STAIN

W-90  
WOOD RAINSCREEN  
DARK STAIN

W-91  
WOOD RAINSCREEN  
DARK STAIN

W-92  
WOOD RAINSCREEN  
DARK STAIN

W-93  
WOOD RAINSCREEN  
DARK STAIN

W-94  
WOOD RAINSCREEN  
DARK STAIN

W-95  
WOOD RAINSCREEN  
DARK STAIN

W-96  
WOOD RAINSCREEN  
DARK STAIN

W-97  
WOOD RAINSCREEN  
DARK STAIN

W-98  
WOOD RAINSCREEN  
DARK STAIN

W-99  
WOOD RAINSCREEN  
DARK STAIN

W-100  
WOOD RAINSCREEN  
DARK STAIN

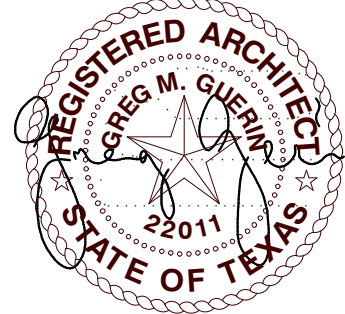




① Perspective at South East Corner



② Front Perspective View



Greg Guerin Architect TX License # 22011



EAST STAR DESIGN  
P.O. BOX 53  
FORNEY, TX 75126 USA  
(214) 469-7176  
(972) 200-7340  
www.EastStarDesign.com  
Architect@EastStarDesign.com

| No. | Description | Date |
|-----|-------------|------|
|     |             |      |
|     |             |      |
|     |             |      |
|     |             |      |
|     |             |      |
|     |             |      |
|     |             |      |

Sun Holdings  
Point West Development  
I-635 & Beltline Coppell, TX

Perspective Views

Project number 14020  
Date 2/24/2016 10:27:39 AM  
Drawn by GG  
Checked by -

A-6

Scale





Greg Guerin Architect TX License # 22011



EAST STAR DESIGN  
P.O. BOX 53  
FORNEY, TX 75126 USA  
(214) 487-7166  
(972) 487-7166  
www.EastStarDesign.com  
Architect@EastStarDesign.com

| No. | Description | Date |
|-----|-------------|------|
|     |             |      |
|     |             |      |
|     |             |      |
|     |             |      |
|     |             |      |
|     |             |      |
|     |             |      |

Sun Holdings  
Point West Development  
1-635 E Beltline Coppell, TX

Center Right  
Perspective

Project number 14020  
Date 2/23/2016 4:03:09 PM  
Drawn by EG  
Checked by -

A-8

Scale

2/23/2016 4:03:09 PM





Greg Guerin Architect TX License # 22011



EAST STAR DESIGN  
P.O. BOX 53  
FORNEY, TX 75126 USA  
(214) 488-7176  
(972) 200-7340  
www.EastStarDesign.com  
Architect@EastStarDesign.com

| No. | Description | Date |
|-----|-------------|------|
|     |             |      |
|     |             |      |
|     |             |      |
|     |             |      |
|     |             |      |
|     |             |      |
|     |             |      |
|     |             |      |
|     |             |      |

Sun Holdings  
Point West Development  
1-635 e Beltline Coppell, TX

Left Corner  
Perspective

Project number 14020  
Date 2/23/2016 9:18:42 PM  
Drawn by EG  
Checked by -

A-9

Scale

2/23/2016 9:18:42 PM





Greg Guerin Architect TX License # 22011

EAST STAR DESIGN  
P.O. BOX 53  
FORNEY, TX 75126 USA  
(214) 469-7176  
(972) 200-7340  
www.EastStarDesign.com  
Architect@EastStarDesign.com



1 Bird's Eye View

| No. | Description | Date |
|-----|-------------|------|
|     |             |      |
|     |             |      |
|     |             |      |
|     |             |      |
|     |             |      |
|     |             |      |
|     |             |      |

Sun Holdings  
Point West Development  
I-635 & Beltline Coppell, TX

Bird's Eye View

Project number 14020  
Date 2/23/2016 7:19:03 PM  
Drawn by EG  
Checked by -

A-7

Scale

2/23/2016 7:19:03 PM



