



1 Front - East Elevation
3/32" = 1'-0"



2 Rear - West Elevation
3/32" = 1'-0"



Greg Guerin Architect TX License # 22011



EAST STAR DESIGN
P.O. BOX 53
FORNEY, TX 75126 USA
(214) 469-7176
(972) 200-7340
www.EastStarDesign.com
Architect@EastStarDesign.com

MATERIALS

CAST STONE

ST-1
PEBBLE BY ROCKCAST
PEBBLE
BY ROCKCAST
1/4" FASTRACK CLIP SYSTEM
16 X 24 X 1 1/4"

ST-2
CARMEL BY ROCKCAST
CARMEL
BY ROCKCAST
1/4" FASTRACK CLIP SYSTEM
16 X 24 X 1 1/4"

ST-3
BROWNSTONE BY ROCKCAST
BROWNSTONE
BY ROCKCAST
1/4" FASTRACK CLIP SYSTEM
16 X 24 X 1 1/4"

CAST STONE (ALTERNATE)

ST-1 (ALTERNATE)
PEBBLE BY ROCKCAST
SNOWCAP
BY HERITAGE CASTSTONE
THIN ADHERED MASONRY
12 X 24 X 1 1/4"

ST-2 (ALTERNATE)
CARMEL BY ROCKCAST
BUCKSKIN
BY HERITAGE CASTSTONE
THIN ADHERED MASONRY
12 X 24 X 1 1/4"

ST-3 (ALTERNATE)
BROWNSTONE BY ROCKCAST
LEATHER
BY HERITAGE CASTSTONE
THIN ADHERED MASONRY
12 X 24 X 1 1/4"

METAL

M-1
ALMOND
BERRIDGE
CORROSION / FLASHING

M-2
ALUMINUM GREY
4'-XST-30
ALPOLIG METAL - COMPOSITE
METAL FASCIA / CANOPY AWNING

STORE FRONT

SF-1
STORE FRONT FRAME
CHAMPAGNE ANODIZED PLUS 4
TNR AP

GLASS

G-1
GLASS
SOLARBAN 61 CLEAR
PPG

PAINT

P-1
PAINT -
PEBBLE BY ROCKCAST

P-2
PAINT -
CARMEL BY ROCKCAST

P-3
PAINT -
BROWNSTONE BY ROCKCAST

WOOD

W-1
WOOD RAINSCREEN
DARK STAIN

GROUT / MORTAR TO MATCH ADJACENT
CASTSTONE

METAL DOORS TO BE PAINTED TO MATCH
ADJACENT CASTSTONE

No.	Description	Date

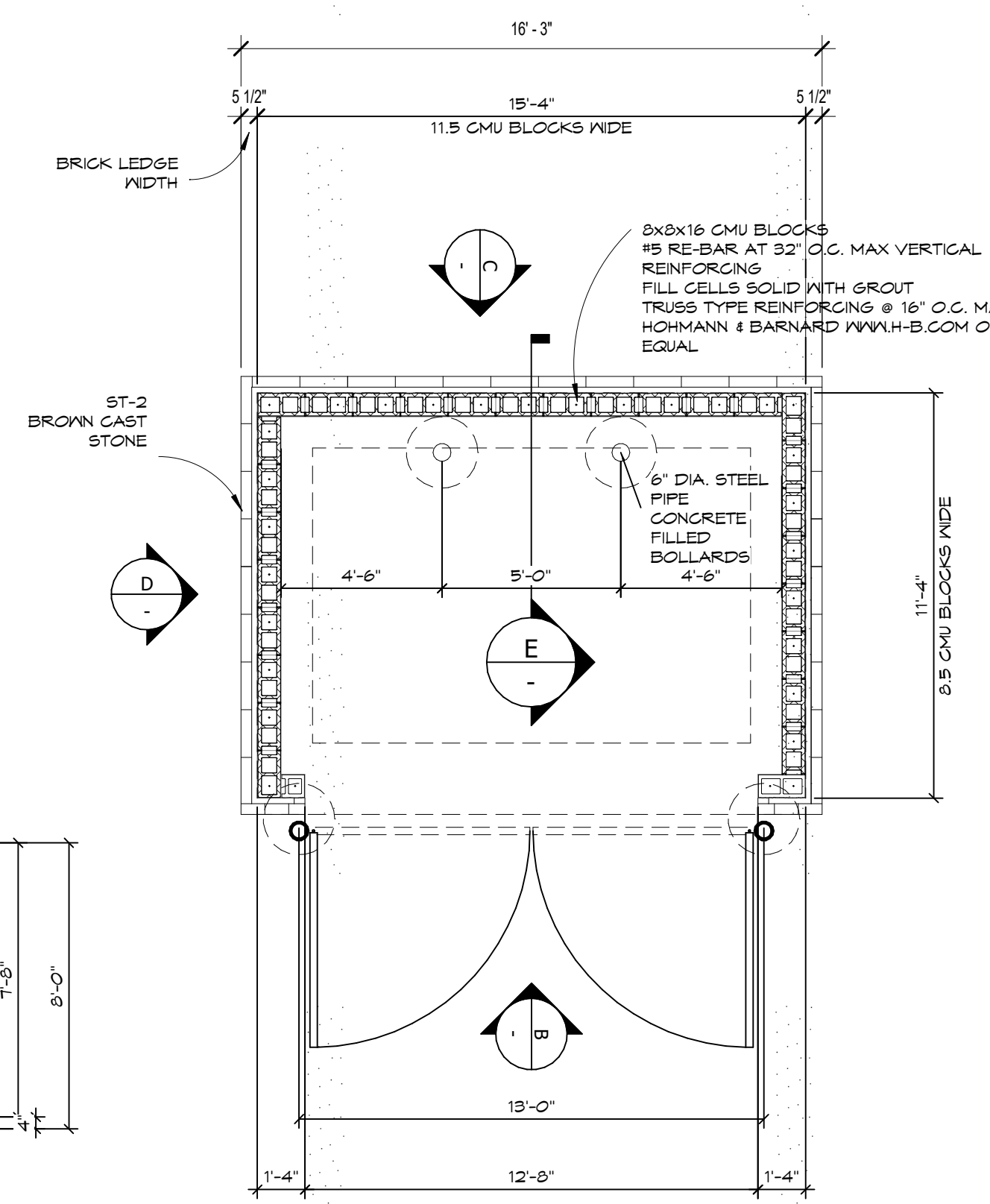
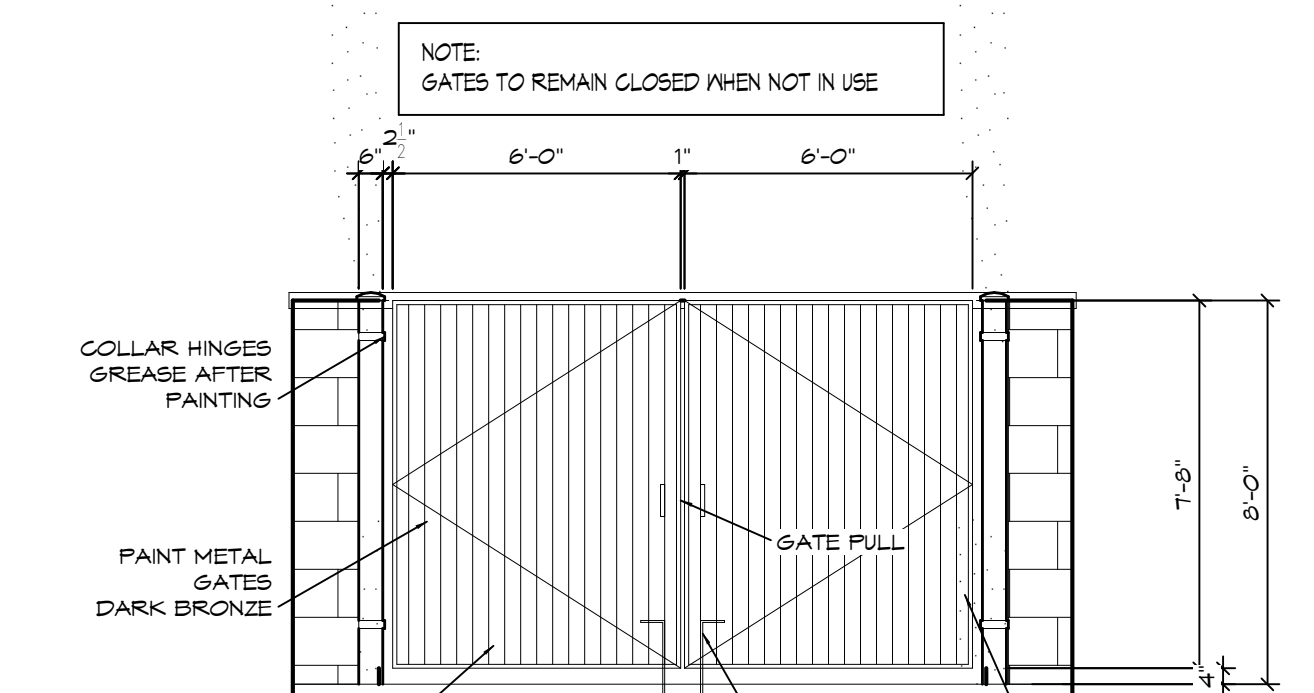
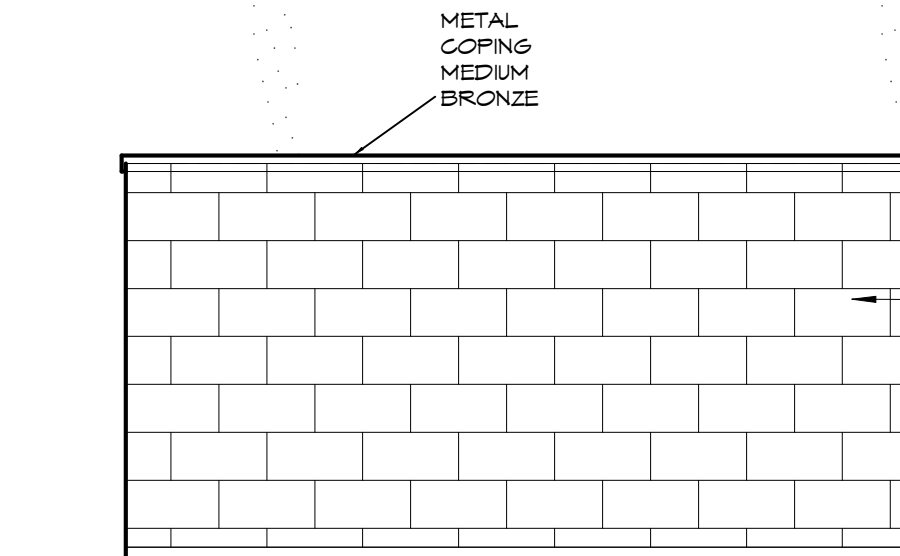
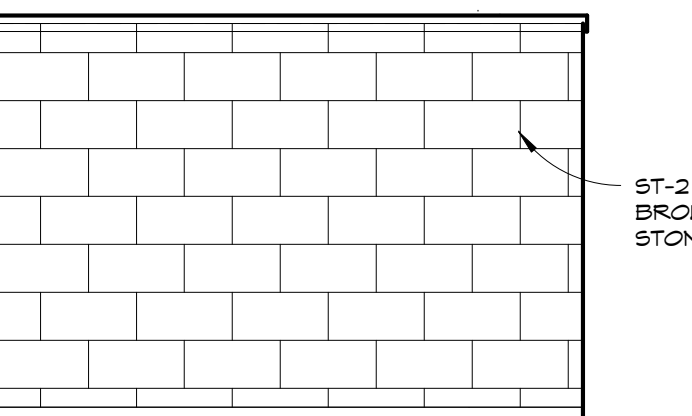
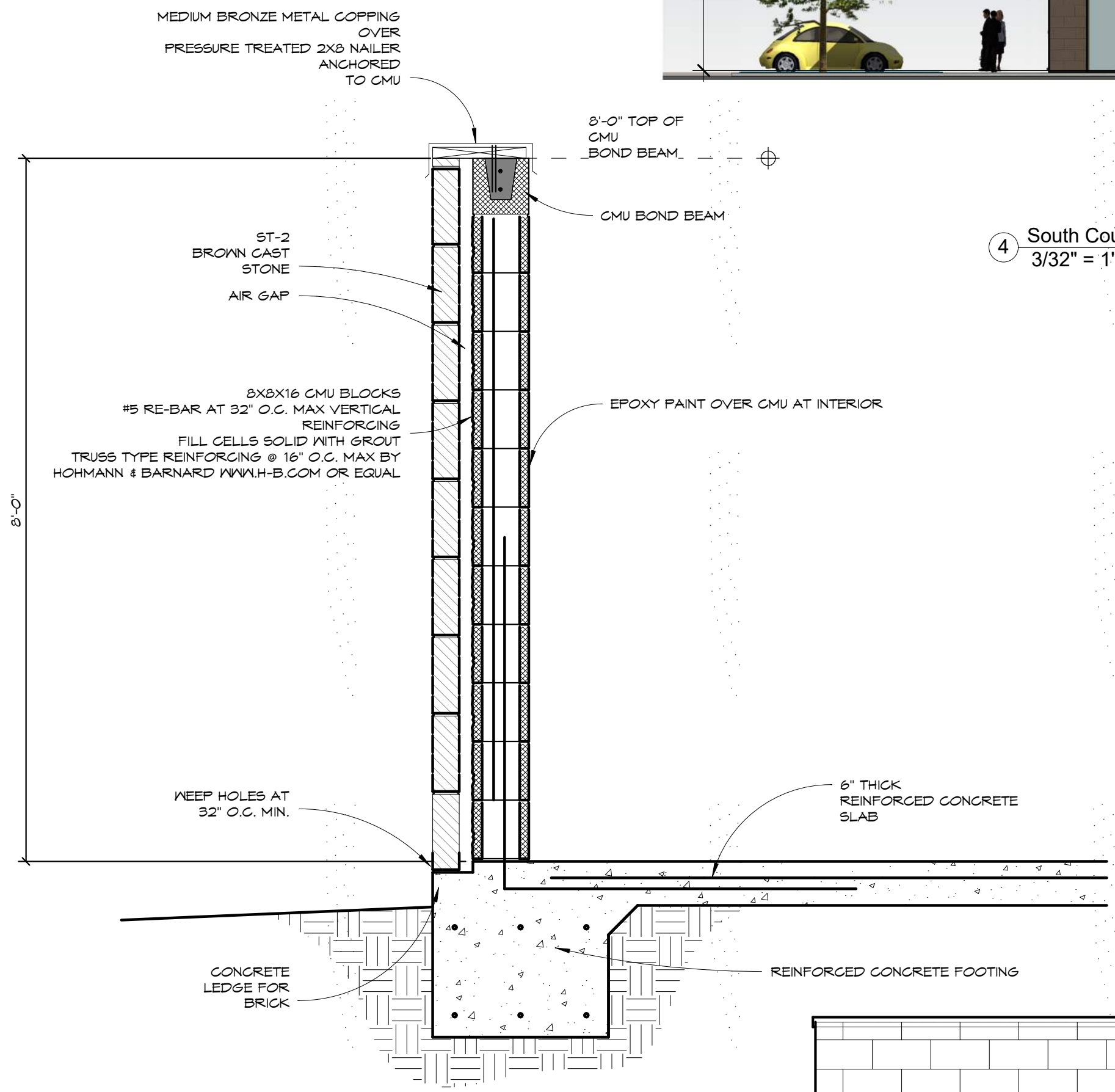
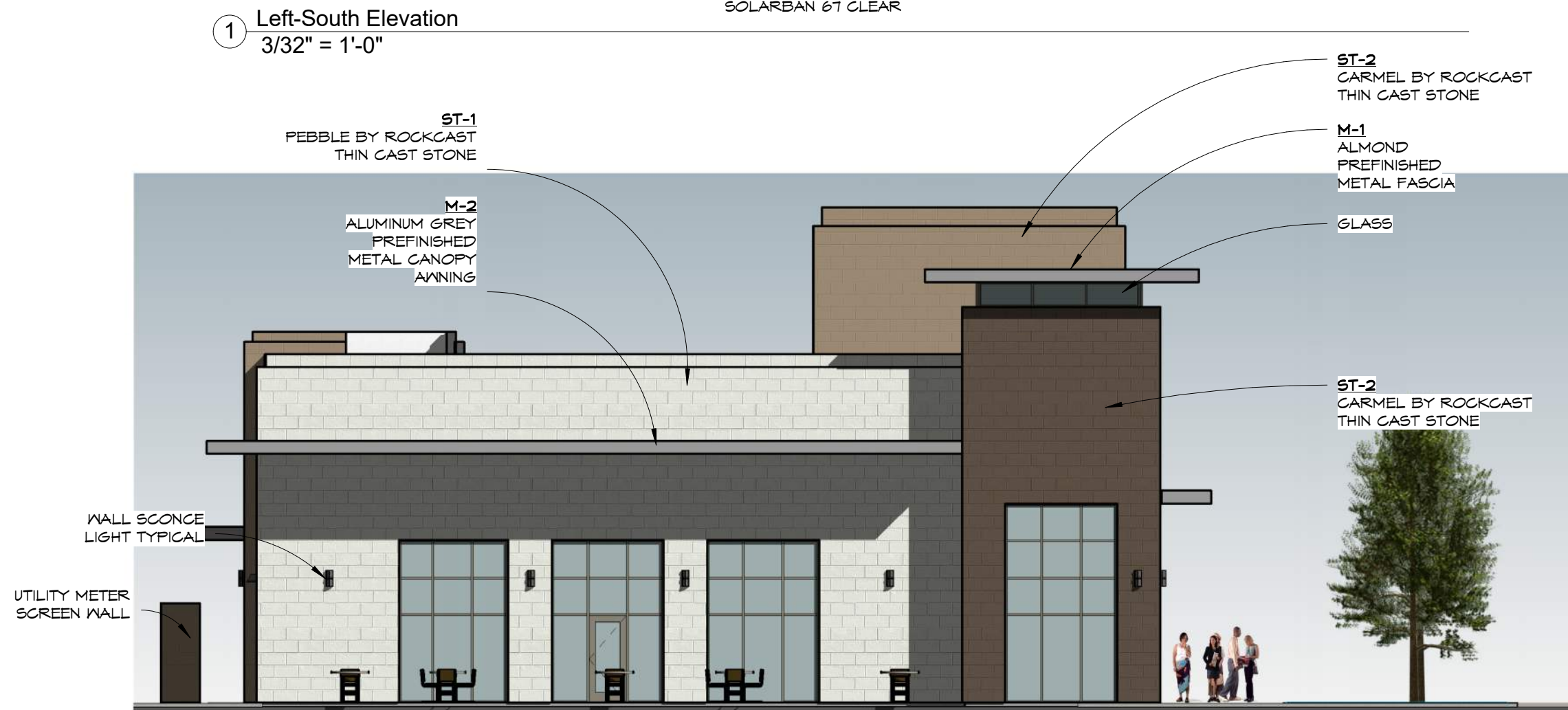
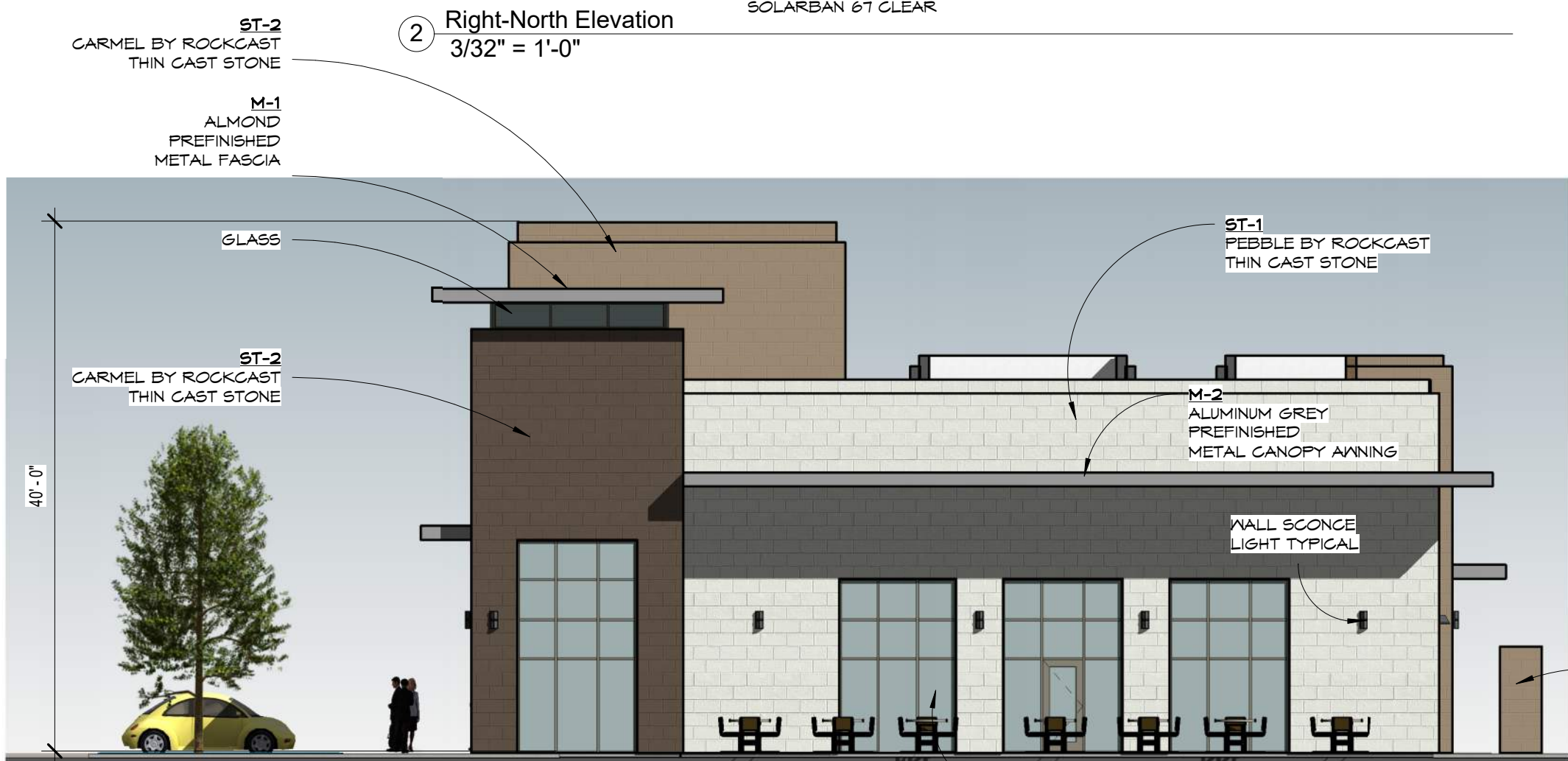
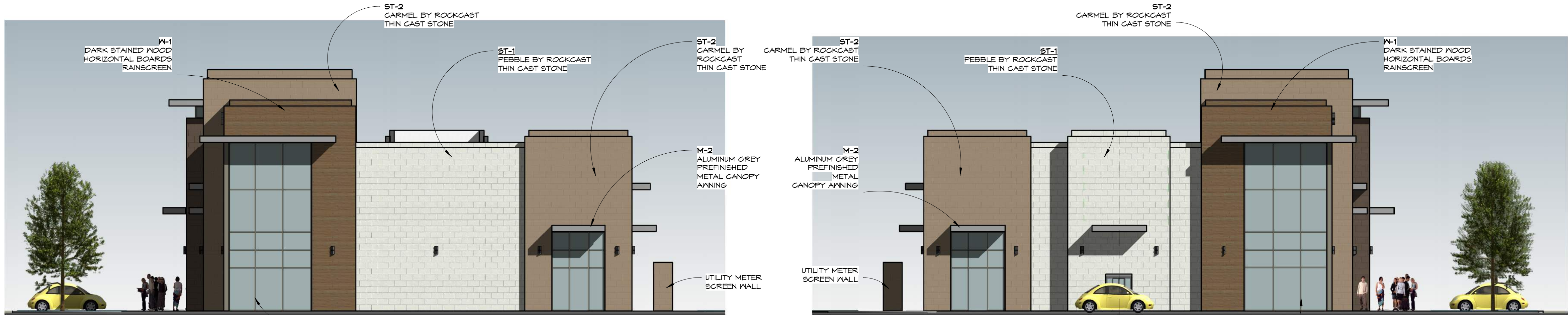
Sun Holdings
Point West Development
I-635 & Beltline Coppell, TX

Elevations

Project number 14020
Date 2/24/2016 9:37:40 AM
Drawn by GG
Checked by -

A-4

Scale As indicated



MATERIALS

- CAST STONE**
- ST-1 PEBBLE BY ROCKCAST
BY ROCKCAST
WV FASTRACK CLIP SYSTEM
16 X 24 X 1 1/4"
- ST-2 CARMEL BY ROCKCAST
THIN CAST STONE
- CAST STONE (ALTERNATE)**
- ST-1 (ALTERNATE) PEBBLE BY ROCKCAST
SNOWCAP
BY HERITAGE CASTSTONE
THIN ADHERED MASONRY
12 X 24 X 1 1/4"
- ST-2 (ALTERNATE) CARMEL BY ROCKCAST
BUCKSKIN
BY HERITAGE CASTSTONE
THIN ADHERED MASONRY
12 X 24 X 1 1/4"
- METAL**
- M-1 ALMOND
BERKSHIRE
COPPING / FLASHING
- M-2 ALUMINUM GREY
4-AST-30
ALPOLIG METAL - COMPOSITE
METAL FASCIA / CANOPY AWNING

- STORE FRONT**
- SF-1 STORE FRONT FRAME
CHAMPAGNE ANODIZED PLUS
YKK AP
- GLASS**
- G-1 GLASS
SOLARBAN 61 CLEAR
PPS
- PAINT**
- P-1 PAINT
PEBBLE BY ROCKCAST
- P-2 PAINT
CARMEL BY ROCKCAST
- P-3 PAINT
BROWNSTONE BY ROCKCAST
- WOOD**
- M-1 WOOD RAINSCREEN
DARK STAIN
- GROUT / MORTAR TO MATCH ADJACENT CASTSTONE
- METAL DOORS TO BE PAINTED TO MATCH ADJACENT CASTSTONE

No.	Description	Date

Sun Holdings
Point West Development
1-635 E Beltline Coppell, TX

Elevations

Project number 14020
Date 2/24/2016 9:40:34 AM
Drawn by GG
Checked by

A-5

Scale As indicated



02-24-16

Greg Guerin Architect TX License # 22011



EAST STAR DESIGN
P.O. BOX 53
FORNEY, TX 75126 USA
(214) 469-7176
(972) 200-7340
www.EastStarDesign.com
Architect@EastStarDesign.com