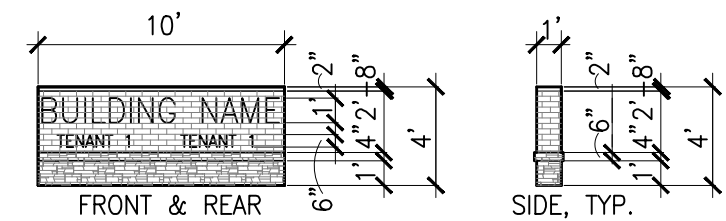


MONUMENT SIGN



MONUMENT SIGN NOTES:

FOR SITES LESS THAN 2 ACRES:

4' MAX. HEIGHT

40 S.F. SIGN AREA MAX (OUTSIDE EDGE OF SIGN)

10 FOOT SETBACK FROM HIGHWAY R.O.W. - (PARKING IS PERP FROM HIGHWAY)

LETTERS MINIMUM HT. OF 6", FONT AND SIZE UNDETERMINED

BUILDING MASONRY TAKE-OFF TABULATIONS

80% MINIMUM MASONRY EXCLUDING FENESTRATION PER FACADE

BUILDING MAX. HT. 23'-6" BUILDING MAX. HT. PER PD 40'

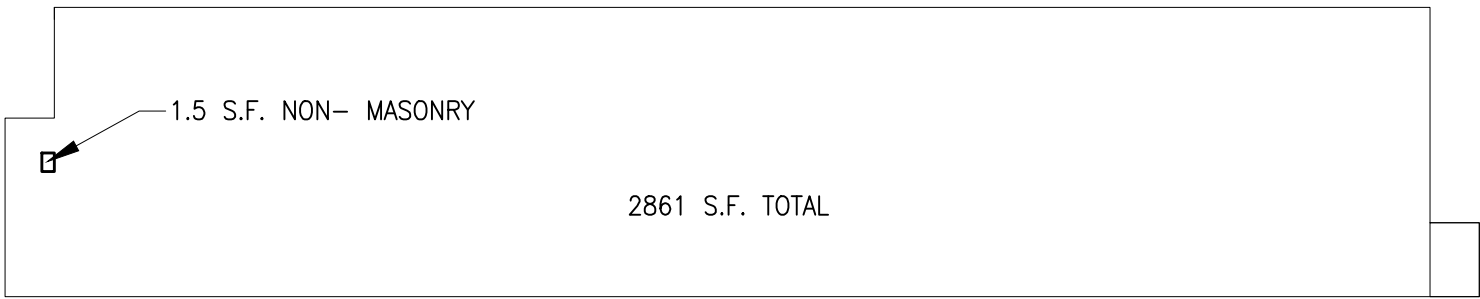
NO SCALE

NORTH ELEVATION

2861 S.F. TOTAL

1.5 S.F. NON- MASONRY

.05% OF FACADE 99.5% MASONRY

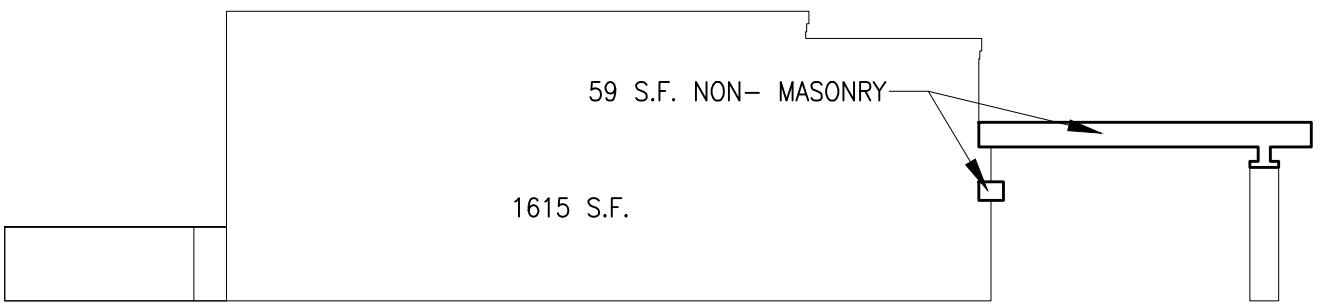


NORTH ELEVATION

1615 S.F.

59 S.F. NON- MASONRY

3.6% OF FACADE 96.4% MASONRY

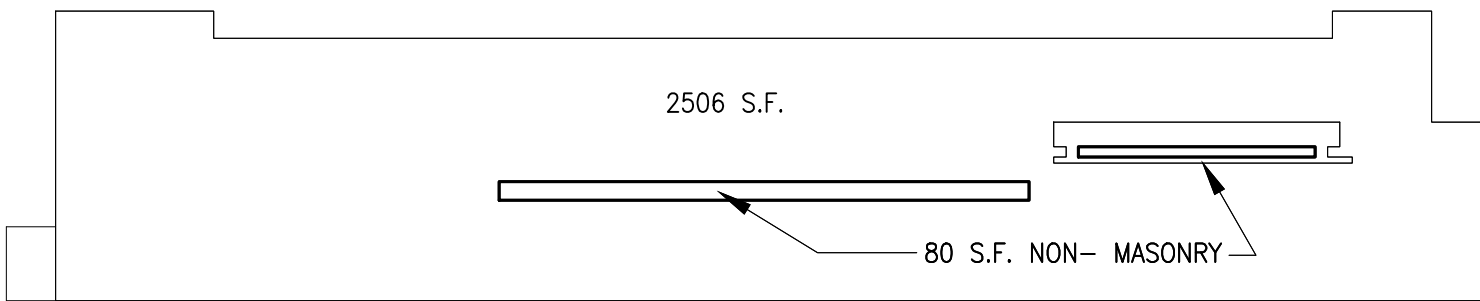


WEST ELEVATION

2506 S.F.

80 S.F. NON- MASONRY

3.2% OF FACADE .96.8% MASONRY

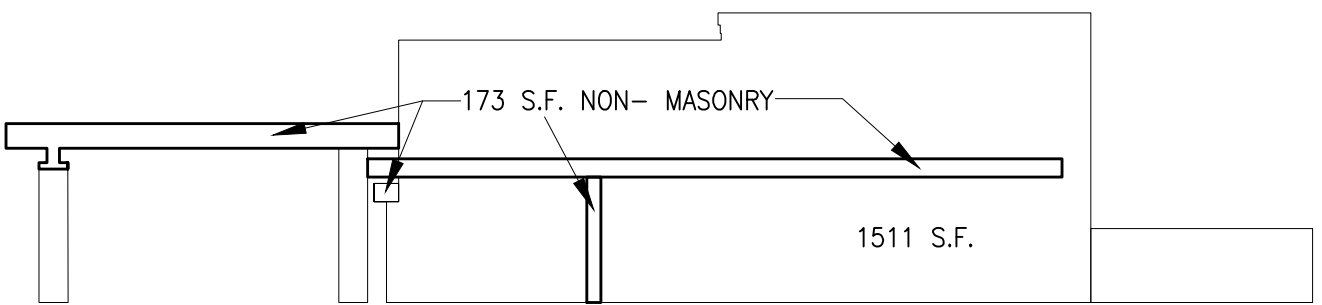


SOUTH ELEVATION

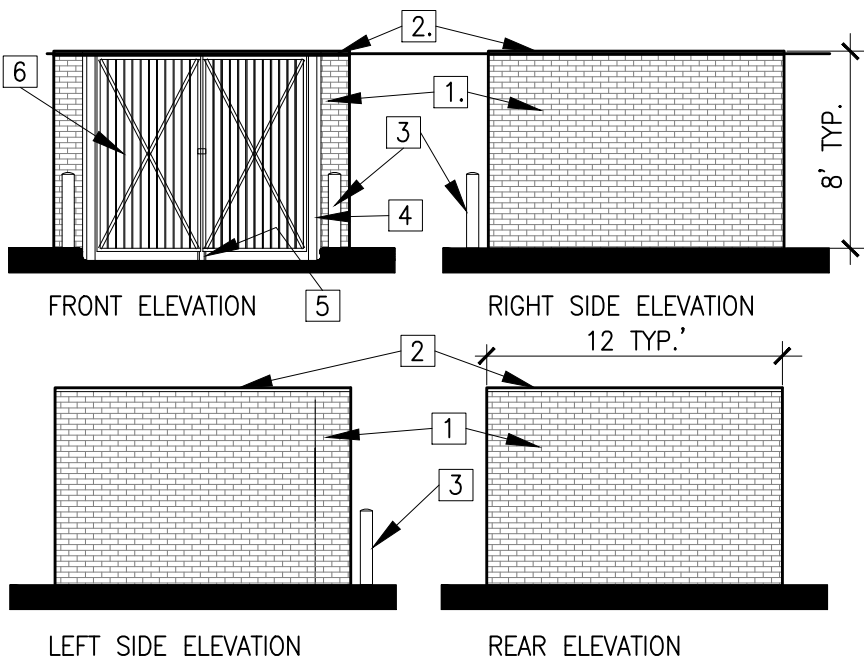
1511 S.F.

173 S.F. NON- MASONRY

11.44% OF FACADE 88.56% MASONRY



DUMPSTER ENCLOSURE



DUMPSTER ENCLOSURE NOTES:

[1] MODULAR SIZE BRICK ON 8" CMU - BRICK FINISH IS BRICK 1

[2] CAST STONE CAP

[3] 3'-6"H 6" DIA. CONC. FILLED BOLLARD W/ CONE TOP

[4] STEEL TUBE IN CONCRETE FOOTING

[5] STEEL CANE BOLT W/ STEEL SLEEVES SET IN CONC. PAVEMENT AT CLOSED AND HOLD POSITIONS

[6] METAL DECK ATTACHED TO STEEL TUBE FRAME

MATERIALS KEY

PREFINISHED METAL PARAPET CAP

BRICK 1- ACME BRICK COMPANY- PALOMA GREY

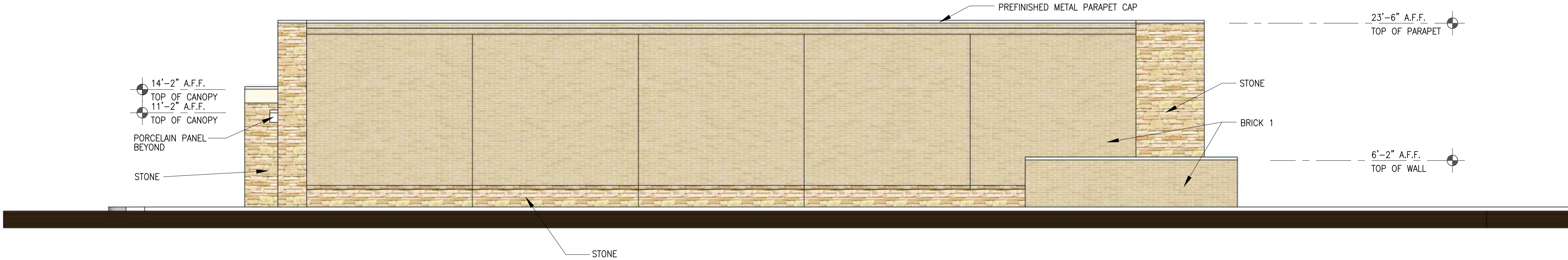
BRICK 2 ACME BRICK COMPANY- VILLAGE

PORCELAIN PANEL CROSSVILLE LAMINAM OXIDE BIANCO -L3439

STONE BLACKSON BRICK IVORY SHELL-ROUGH

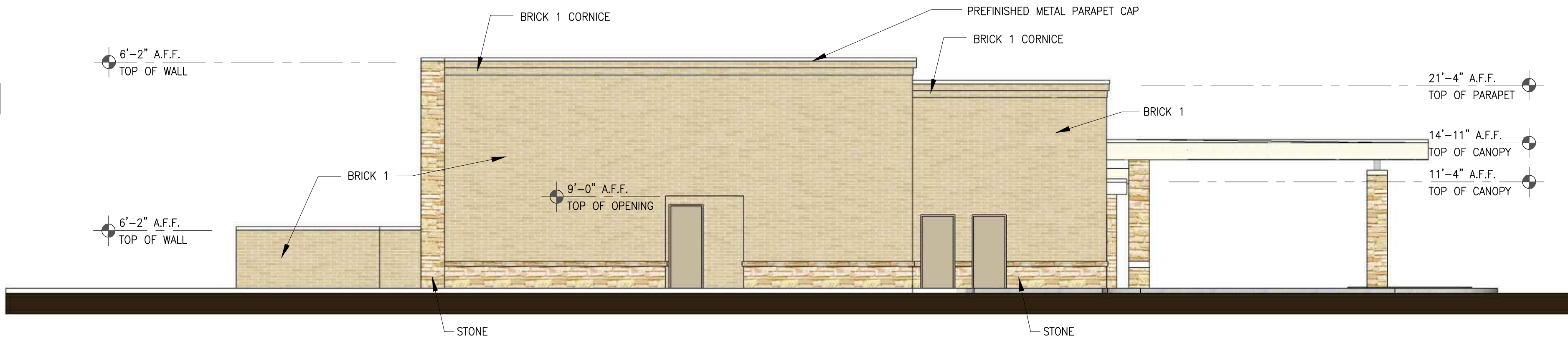
STOREFRONT KAWNNEER CLEAR ANODIZED

WINDOWS DOUBLE PANE LOW E PPG ATLANTICA (EXTERIOR PANE)



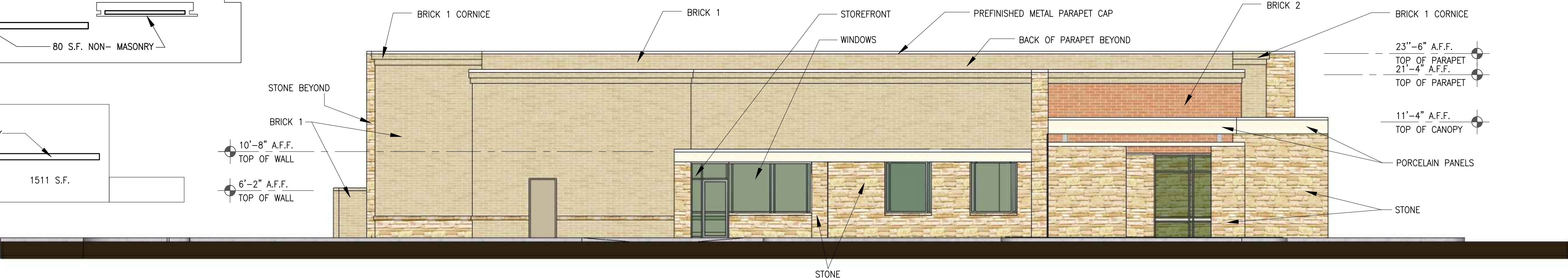
D 2A1 EXTERIOR ELEVATION-EAST

SCALE 1/8" = 1'-0"



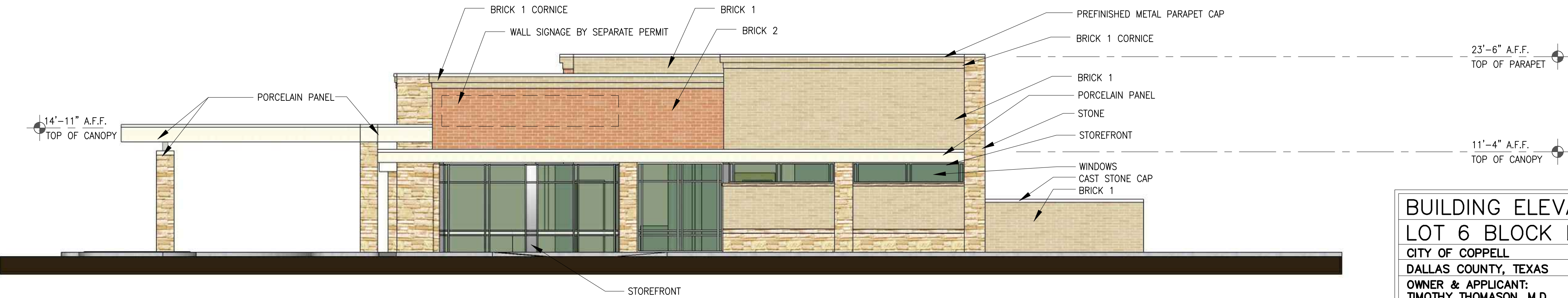
C 2A1 EXTERIOR ELEVATION-NORTH

SCALE 1/8" = 1'-0"



B 2A1 EXTERIOR ELEVATION-WEST

SCALE 1/8" = 1'-0"



A 2A1 EXTERIOR ELEVATION-SOUTH

SCALE 1/8" = 1'-0"

BUILDING ELEVATIONS

711 PLAZA BLVD

LOT 6 BLOCK D – THE PLAZA

CITY OF COPPELL

DALLAS COUNTY, TEXAS

OWNER & APPLICANT:  
TIMOTHY THOMASON, M.D.  
2021 N. MACARTHUR BLVD, SUITE 150  
IRVING, TEXAS 75061  
PH. 972.253.4250  
FAX 972.253.4254  
TTHOMASON@ MSCITX.COM

ARCHITECT: BWA ARCHITECTS  
3010 LBJ SUITE 110  
DALLAS, TEXAS 75234  
P) 972.661.5461 F) 972.661.5449  
JEFF@BWAARCHITECTS.COM

CIVIL ENGINEER—CONZALES & SCHNEEBERG  
ENGINEERS & SURVEYORS, INC.  
660 N. CENTRAL EXPY, SUITE 250  
PLANO, TX. 75074  
PH. 972.516.8855  
FAX 972.516.8901  
ROBERTSCHNEEBERG@GS-ENGINEERS.COM

LANDSCAPE ARCHITECT:  
GRUBBS DESIGN GROUP  
403 S. TENNESSEE STREET  
MCKINNEY, TEXAS 75069  
P) 972.548.5020  
JOE@GRUBBSDESIGNGROUP.NET

EXHIBIT "D"