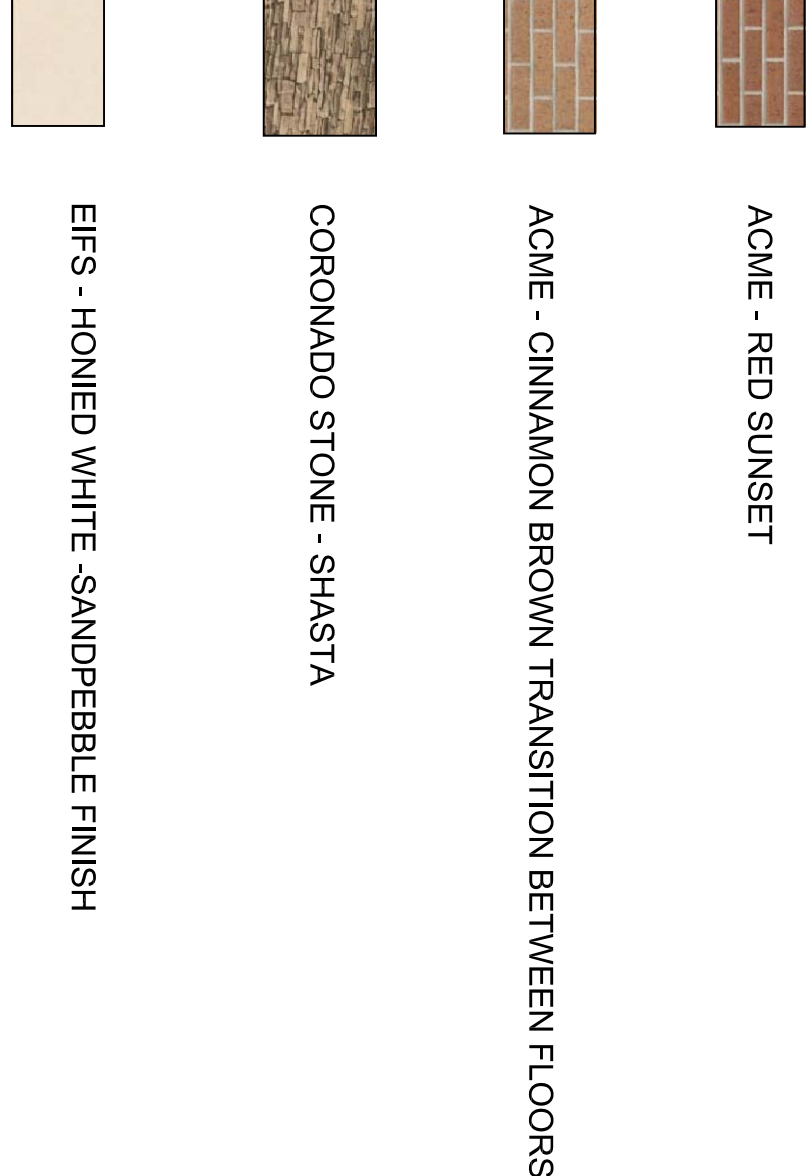


HOLIDAY INN EXTERIOR FINISHES:

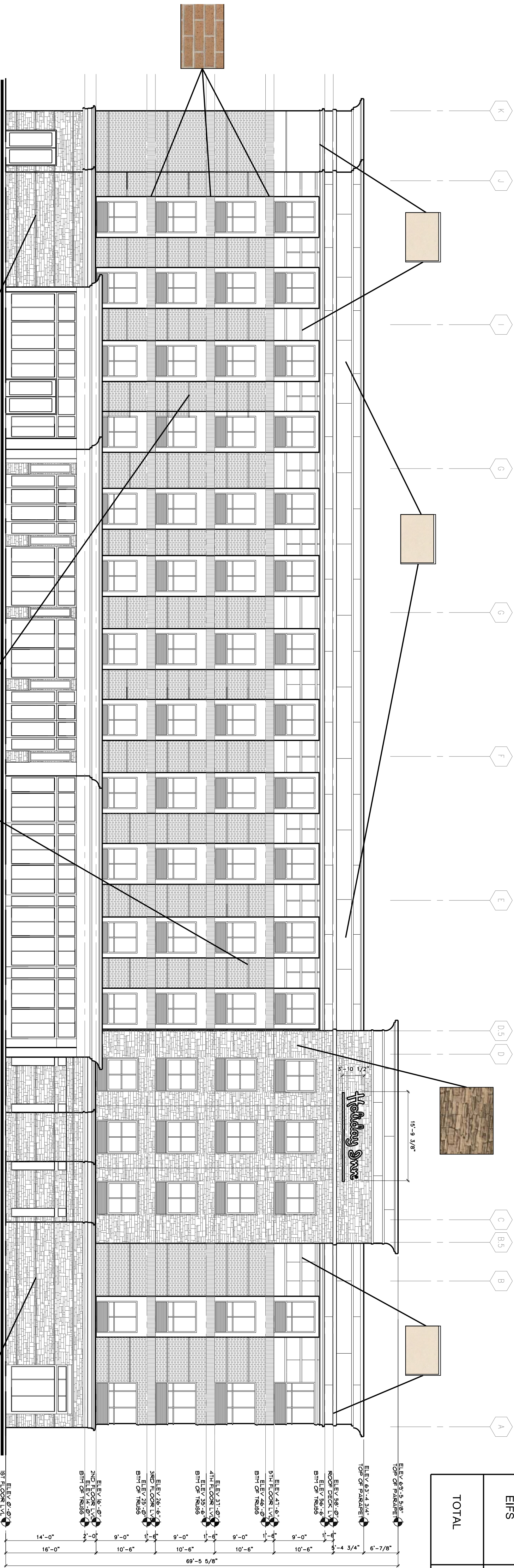


	NORTH ELEVATION	SOUTH ELEVATION	EAST ELEVATION	WEST ELEVATION
BRICK	1905 SQFT 52%	2465 SQFT 49%	3845 SQFT 46%	4173 SQFT 59%
STONE	1033 SQFT 28%	1545 SQFT 31%	2869 SQFT 35%	1654 SQFT 23%
EIFS	757 SQFT 20%	1033 SQFT 20%	1713 SQFT 19%	1279 SQFT 18%
TOTAL	3695 SQFT	5043 SQFT	8427 SQFT	7106 SQFT

WEST ELEVATION

01

3/32"=1'-0"



EAST ELEVATION

02

3/32"=1'-0"

EXHIBIT H
1 OF 3

ALOFT/ HOLIDAY INN HOTELS

Lot 1R, Block 1 Northpoint Addition
Doc. No. 20080234110, M.R.D.C.T.
Cabinet A, Slide 12987, P.R.T.C.T.
4.846 Acres = 211,081.37 S.F.

Owner/ Applicant: NORTHPOINT HOTEL GROUP LLC
768 Lexington Ave, Coppell, Texas 75019
Phone: 972-897-4747 Email: sukieon@gmail.com

Architect: Hugo Monsanto Architect
200 S. Rogers Suite 102, Waxahachie, Texas 75165
Phone: 972-938-2500 Email: monsanctoarchitects@att.net

Engineer: SLABED PE (TXOKLA) CFM
221 Bedford Road, Suite 315, Bedford, Texas 76022
Phone: 214-868-9320 Email: shaddd@gmail.com



NEW HOTEL DEVELOPMENT:

ALOFT HOTEL
HWY 121 @ NORTH POINT DRIVE
COPPELL, TEXAS

Holiday Inn



DEVELOPER

NORTHPOINT HOTEL GROUP LLC
768 Lexington Ave, Coppell Texas 75019

h u g o m o n s a n t o
a r c h i t e c t
200 south rogers street #102 • waxahachie texas 75165 • monsanctoarchitects@att.net • 972.938.2500

JOB NUMBER
CS-010715

SHEET NUMBER

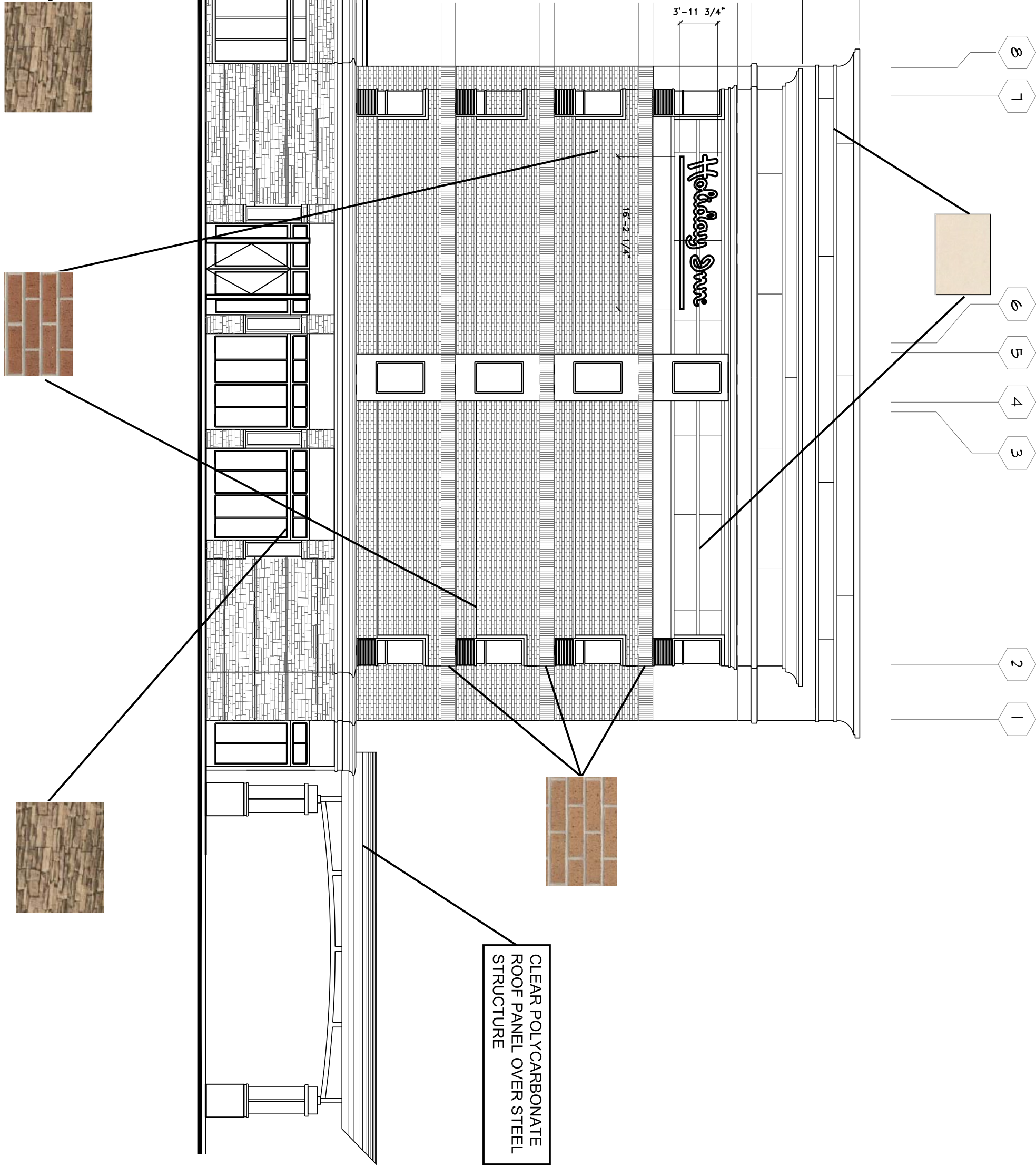
A2.10

DATE OF ORIGINAL ISSUE
12/05/15

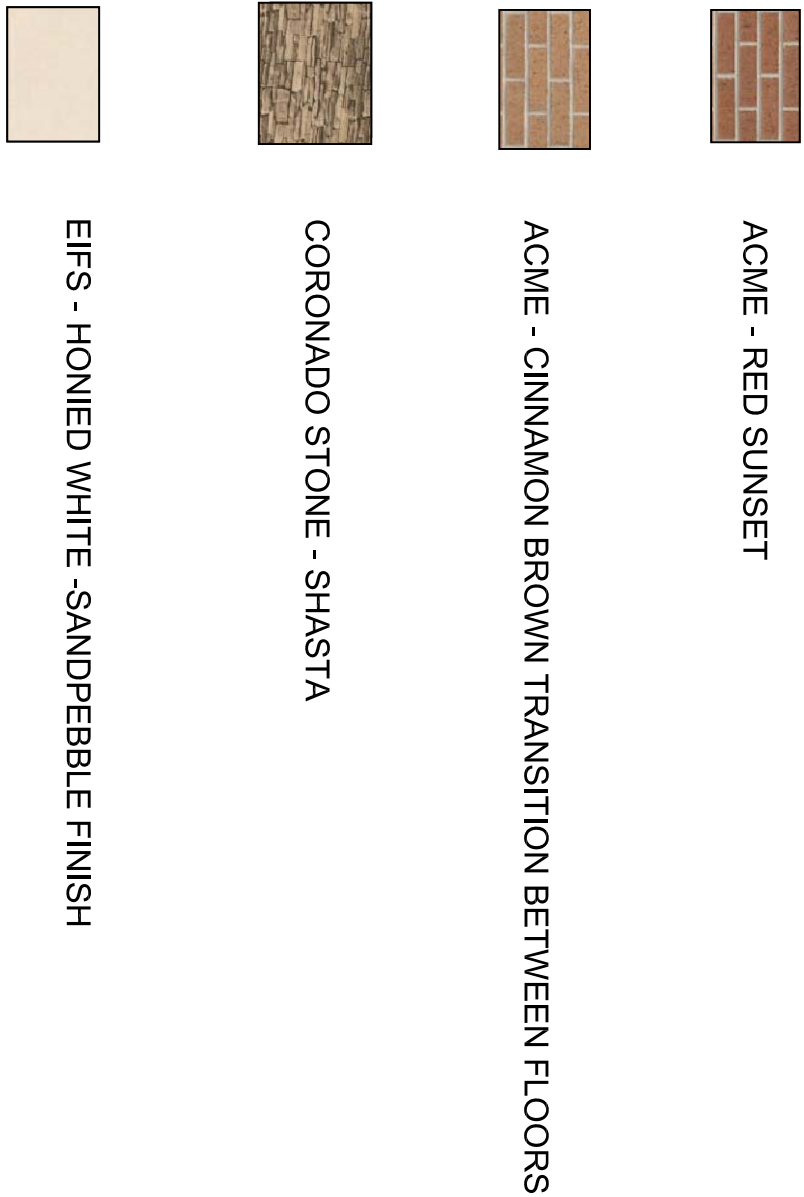
NORTH ELEVATION

3/32"=1'-0"

01
A211



HOLIDAY INN EXTERIOR FINISHES:



	NORTH ELEVATION	SOUTH ELEVATION	EAST ELEVATION	WEST ELEVATION
BRICK	1905 SQFT 52%	2465 SQFT 49%	3845 SQFT 46%	4173 SQFT 59%
STONE	1033 SQFT 28%	1545 SQFT 31%	2869 SQFT 35%	1654 SQFT 23%
EIFS	757 SQFT 20%	1033 SQFT 20%	1713 SQFT 19%	1279 SQFT 18%
TOTAL	3695 SQFT	5043 SQFT	8427 SQFT	7106 SQFT

SOUTH ELEVATION

3/32"=1'-0"

02
A211

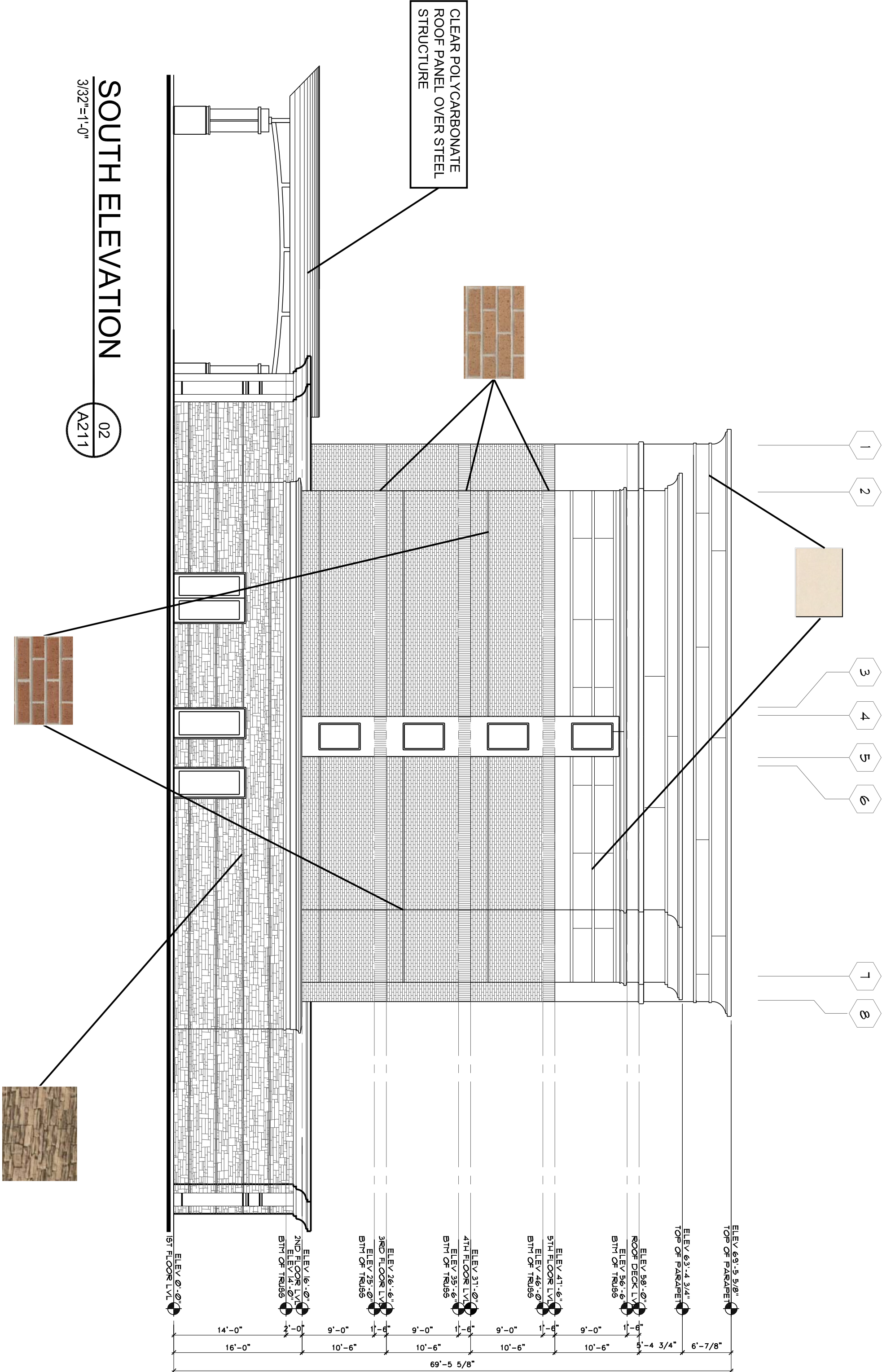
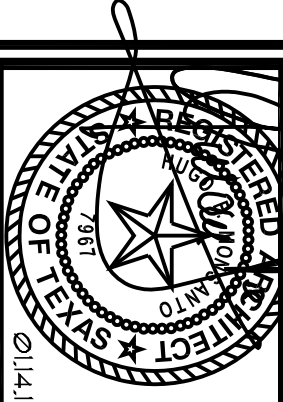


EXHIBIT H
2 OF 3

ALOFT/ HOLIDAY INN HOTELS	
Lot 1R, Block 1 Northpoint Addition Doc. No. 20080234110, M.R.D.C.T. Cabinet A, Slide 12987, P.R.T.C.T. 4.846 Acres = 211,081.37 S.F.	
Owner/ Applicant: NORTHPOINT HOTEL GROUP LLC 768 Lexington Ave, Coppell, Texas 75019 Phone: 972-897-4747 Email: sukieon@gmail.com	
Architect: Hugo Monsanto Architect 200 S. Rogers Suite 102, Waxahachie, Texas 75165 Phone: 972-938-2500 Email: monsanctoarchitects@att.net	
Engineer: SLABED PE (TXOKLA) CFM 221 Bedford Road, Suite 315, Bedford, Texas 76022 Phone: 214-868-9320 Email: shaddd@gmail.com	

JOB NUMBER CS-010715	SHEET NUMBER A2.11
DATE OF ORIGINAL ISSUE 12/05/15	

h u g o m o n s a n t o
a r c h i t e c t
200 south rogers street #102 • waxahachie texas 75165 • monsanctoarchitects@att.net • 972.938.2500



NEW HOTEL DEVELOPMENT:

ALOFT HOTEL
HWY 121 @ NORTH POINT DRIVE
COPPELL, TEXAS



DEVELOPER

NORTHPOINT HOTEL GROUP LLC
768 Lexington Ave, Coppell Texas 75019



DEVELOPER

NORTHPOINT HOTEL GROUP LLC

h u g o m o n s a n t o
a r c h i t e c t

200 South Rogers Street #102 • Wixom, Michigan 48185 • northpointhotelgroup.com • 972.338.2500



Holiday Inn