

	NORTH ELEVATION	SOUTH ELEVATION	EAST ELEVATION	WEST ELEVATION
BRICK	4179 SQFT 49%	5291 SQFT 56%	3451 SQFT 57%	2711 SQFT 42%
STONE	1643 SQFT 19%	1985 SQFT 21%	932 SQFT 15%	1533 SQFT 24%
EIFS	1578 SQFT 19%	1945 SQFT 20%	1203 SQFT 20%	929 SQFT 15%
GRANITE	1058 SQFT 13%	267 SQFT 3%	479 SQFT 8%	1244 SQFT 19%
TOTAL	8458 SQFT	9488 SQFT	6065 SQFT	6417 SQFT

ALOFT EXTERIOR FINISHES:

- ACME - VILLAGE
- ACME - EBONY TRANSITION BETWEEN FLOORS
- CORONADO STONE - CATHEDRAL GRAY
- EIFS - HONIED WHITE/ SANDEBBLE FINISH
- GRANITE - ABSOLUTE BLACK

EXHIBIT I
1 OF 3

ALOFT/ HOLIDAY INN HOTELS	
Lot 1R, Block 1 Northpoint Addition Doc. No. 20080234110, M.R.D.C.T. Cabinet A, Slide 12987, P.R.T.C.T. 4.846 Acres = 211,081.37 S.F.	
Owner/ Applicant:	NORTHPOINT HOTEL GROUP LLC 768 Lexington Ave, Coppell, Texas 75019 Phone: 972-938-2500 Email: monsantoarchitects@gmail.com
Architect:	Hugo Monsanto Architects 200 S. Rogers Suite 102, Waxahachie, Texas 75165 Phone: 972-938-2500 Email: monsantoarchitects@att.net
Engineer:	SLABED PE (TXOKLA) CFM 221 Bedford Road, Suite 315, Bedford, Texas 76022 Phone: 214-868-9320 Email: slabed.pe@gmail.com

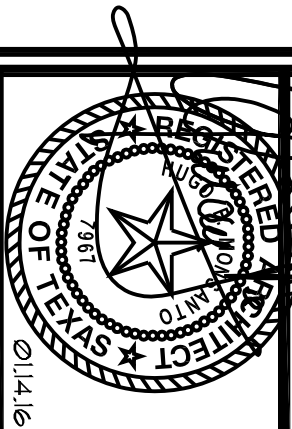
NEW HOTEL DEVELOPMENT:

ALOFT HOTEL
HWY 121 @ NORTH POINT DRIVE
COPPELL, TEXAS

DEVELOPER

NORTHPOINT HOTEL GROUP LLC
768 Lexington Ave, Coppell Texas 75019

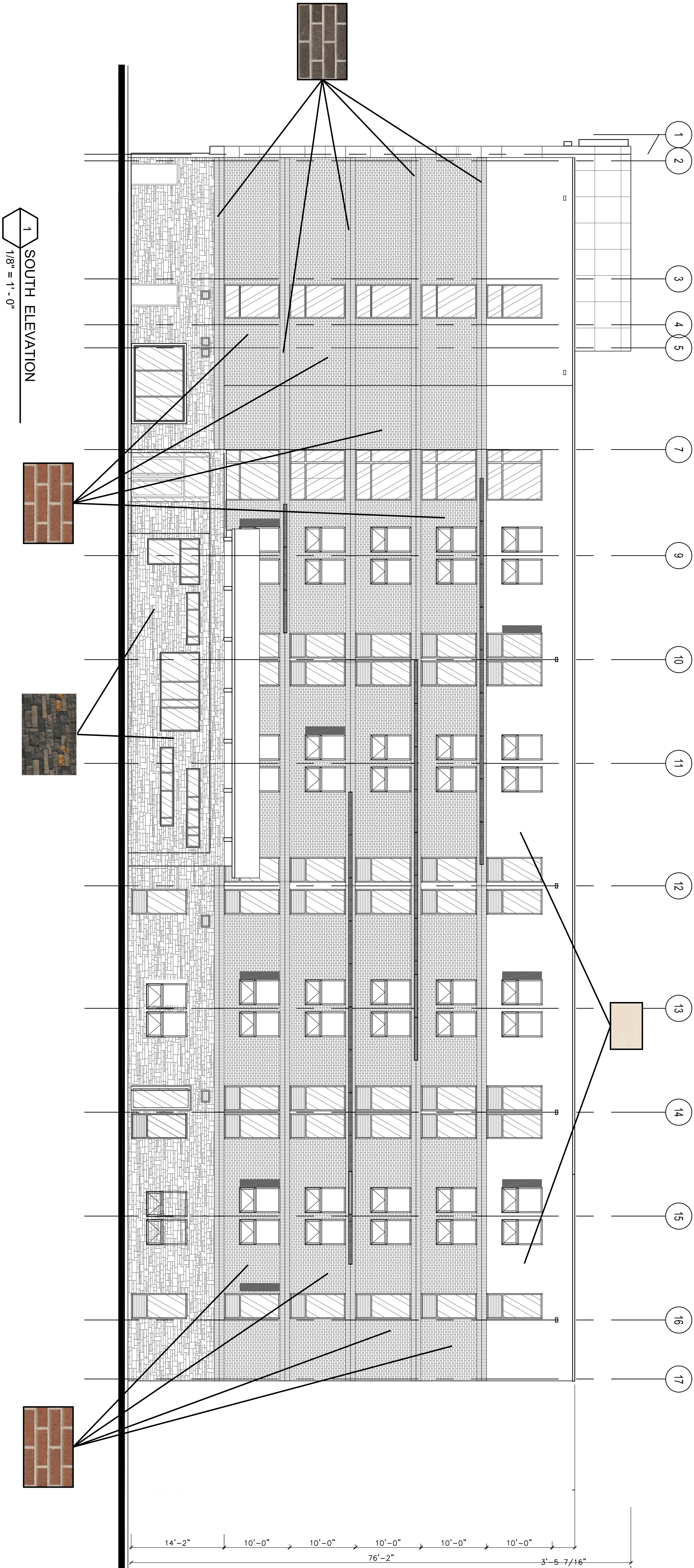
hugomonsanto
architects
200 south rogers street #102 • waxahachie texas 75165 • monsantoarchitects@att.net • 972.938.2500



JOB NUMBER
CS-010715

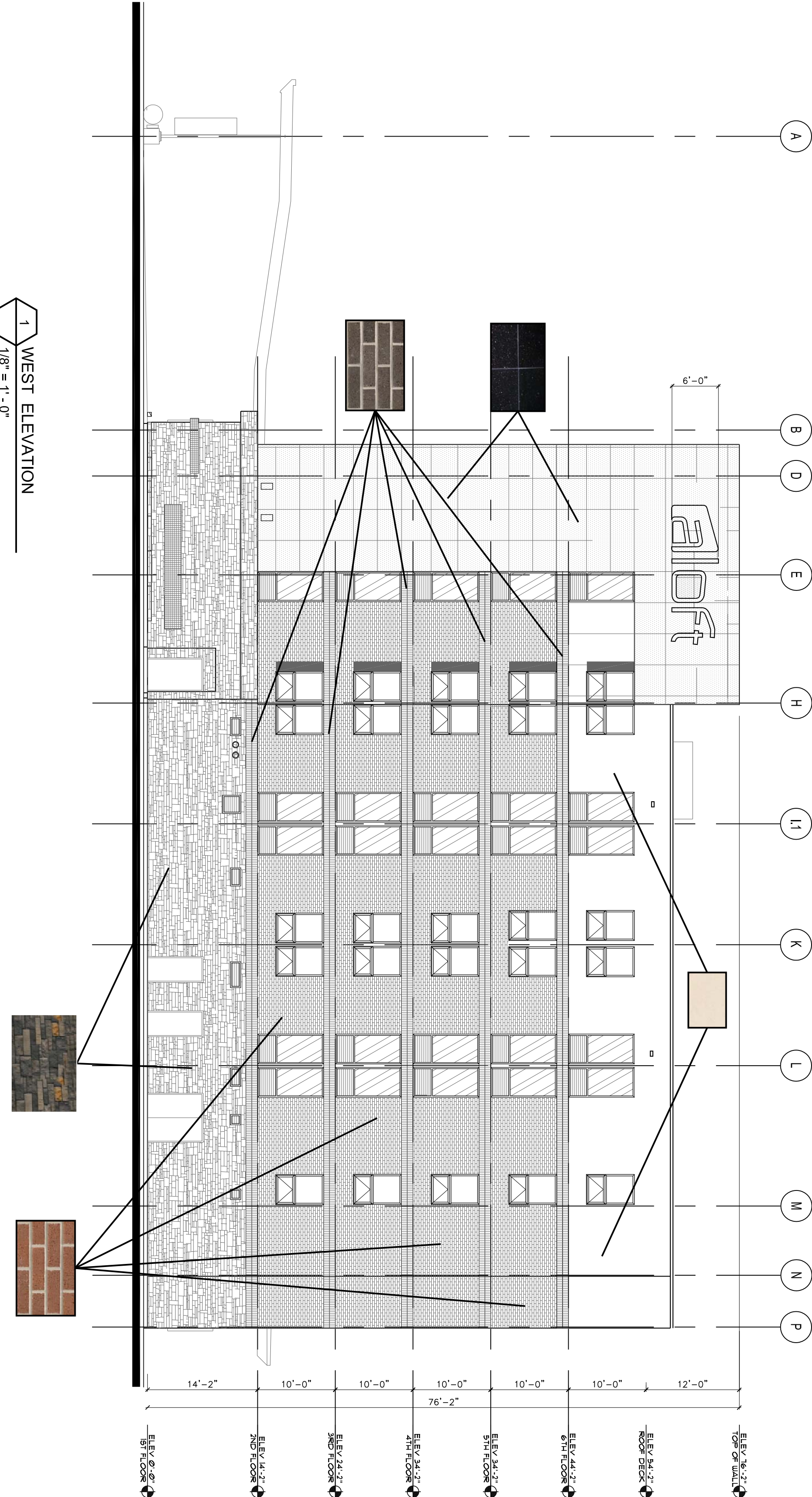
SHEET NUMBER
A2.10

DATE OF ORIGINAL ISSUE
12/05/15



1 SOUTH ELEVATION
1/8" = 1' - 0"

- ALOFT EXTERIOR FINISHES:**
- ACME - VILLAGE
 - ACME - EBONY TRANSITION BETWEEN FLOORS
 - CORONADO STONE - CATHEDRAL GRAY
 - EIFS - HONIED WHITE/ SANDEBBLE FINISH
 - GRANITE - ABSOLUTE BLACK



1 WEST ELEVATION
1/8" = 1' - 0"

	NORTH ELEVATION	SOUTH ELEVATION	EAST ELEVATION	WEST ELEVATION
BRICK	4179 SQFT 49%	5291 SQFT 56%	3451 SQFT 57%	2711 SQFT 42%
STONE	1643 SQFT 19%	1985 SQFT 21%	932 SQFT 15%	1533 SQFT 24%
EIFS	1578 SQFT 19%	1945 SQFT 20%	1203 SQFT 20%	929 SQFT 15%
GRANITE	1058 SQFT 13%	267 SQFT 3%	479 SQFT 8%	1244 SQFT 19%
TOTAL	8458 SQFT	9488 SQFT	6065 SQFT	6417 SQFT

EXHIBIT I
2 OF 3

ALOFT/ HOLIDAY INN HOTELS	
Lot 1R, Block 1 Northpoint Addition Doc. No. 20080234110, M.R.D.C.T. Cabinet A, Slide 12987, P.R.T.C.T. 4.846 Acres = 211,081.37 S.F.	
Owner/ Applicant:	NORTHPOINT HOTEL GROUP LLC 768 Lexington Ave, Coppell Texas 75019 Phone: 972-938-2500 Email: monsantoarchitect@gmail.com
Architect:	Hugo Monsanto Architect 200 S. Rogers Suite 102 Waxahachie Texas 75165 Phone: 972-938-2500 Email: monsantoarchitect@att.net
Engineer:	SLABED PE (TXOKLA) CFM 221 Bedford Road, Suite 315, Bedford, Texas 76022 Phone: 214-868-9320 Email: slabed.pe@gmail.com

h u g o m o n s a n t o
a r c h i t e c t
200 south rogers street #102 • waxahachie texas 75165 • monsantoarchitects@att.net • 972.938.2500



NEW HOTEL DEVELOPMENT:
ALOFT HOTEL
HWY 121 @ NORTH POINT DRIVE
COPPELL, TEXAS



DEVELOPER
NORTHPOINT HOTEL GROUP LLC
768 Lexington Ave, Coppell Texas 75019

SHEET NUMBER
A2.11
DATE OF ORIGINAL ISSUE
12/05/15



DEVELOPER

NORTHPOINT HOTEL GROUP LLC

h u g o m o n s a n t o
a r c h i t e c t
200 south rogers street #102 • watahachie texas 75165 • monsantoarchitects@att.net • 972.938.2500