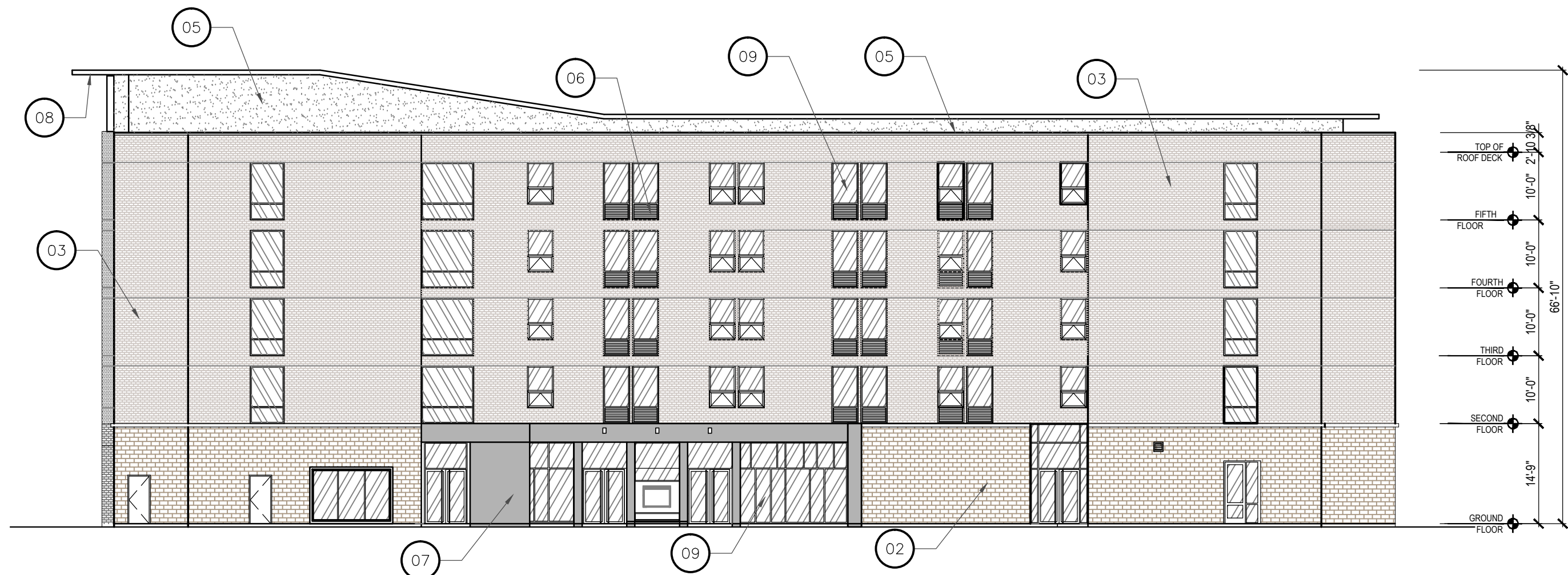


05 BUILDING SIGN

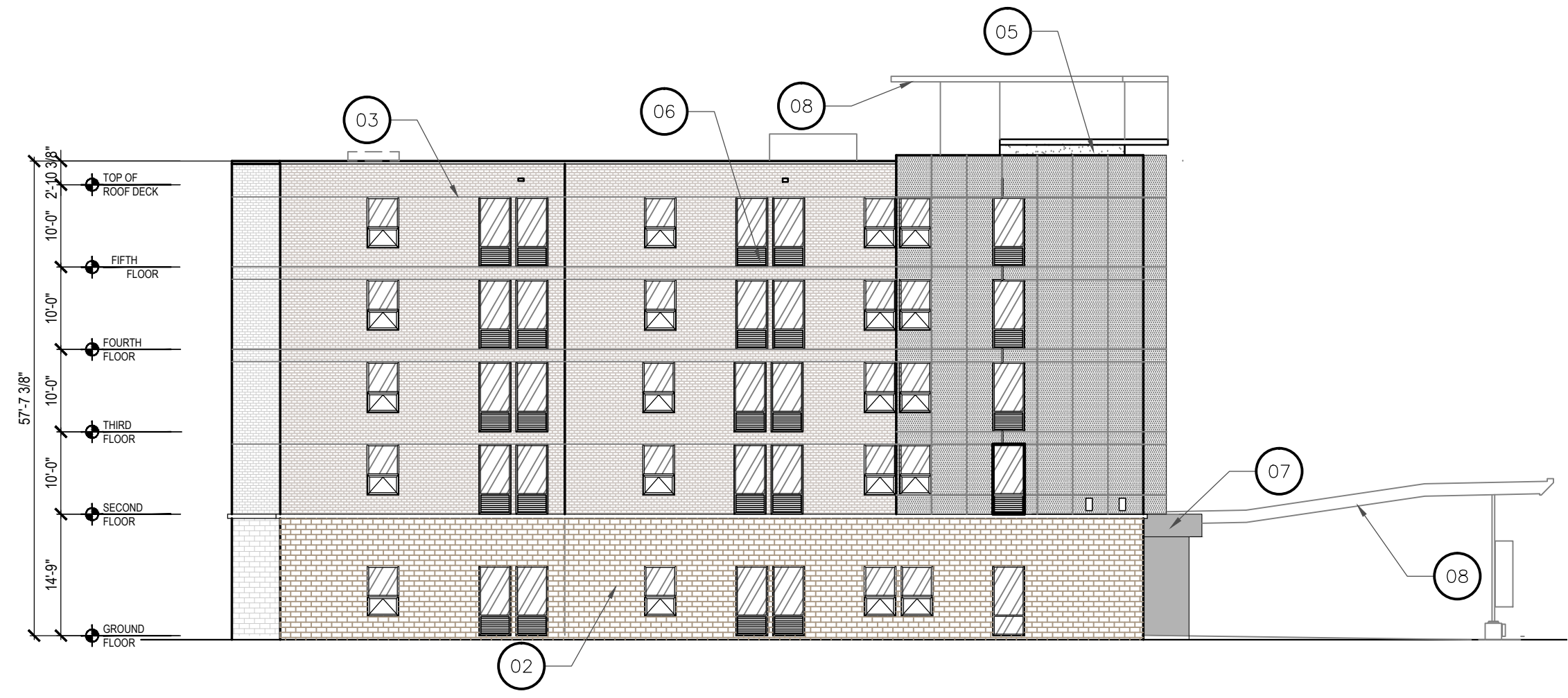


04 South Elevation

SCALE: 1/16" = 1'-0"

SOUTH ELEVATION

		TOTAL	1st Floor	2nd Floor	3rd Floor	4th Floor	5th Floor	PARAPET
AREA	TOTAL	11889.4SF	2810.6 SF	1905.5 SF	1905.5 SF	1905.5 SF	1905.5 SF	1456.8 SF
	WALL AREA	9263.4SF	1959.4SF	1461.8SF	1461.8SF	1461.8SF	1461.8SF	1456.8SF
GLAZING	2626 SF	1619.2 SF	1443.9 SF	1443.9 SF	1443.9 SF	1443.9 SF	1443.9 SF	576.6 SF
	86.0%	82.6%	98.7%	98.7%	98.7%	98.7%	98.7%	39.5%
MASONRY	BRICK & STONE	7971.4SF	1619.2 SF	1443.9 SF	1443.9 SF	1443.9 SF	1443.9 SF	576.6 SF
	NEOLITH	71.6SF	0%	17.9 SF	17.9 SF	17.9 SF	17.9 SF	0%
METAL	534 SF	340.2 SF	0%	0%	0%	0%	0%	193.8 SF
	5.8%	17.3%	0%	0%	0%	0%	0%	13.3%
STUCCO	685 SF	0%	0%	0%	0%	0%	0%	685 SF
	7.4%	0%	0%	0%	0%	0%	0%	47.0%

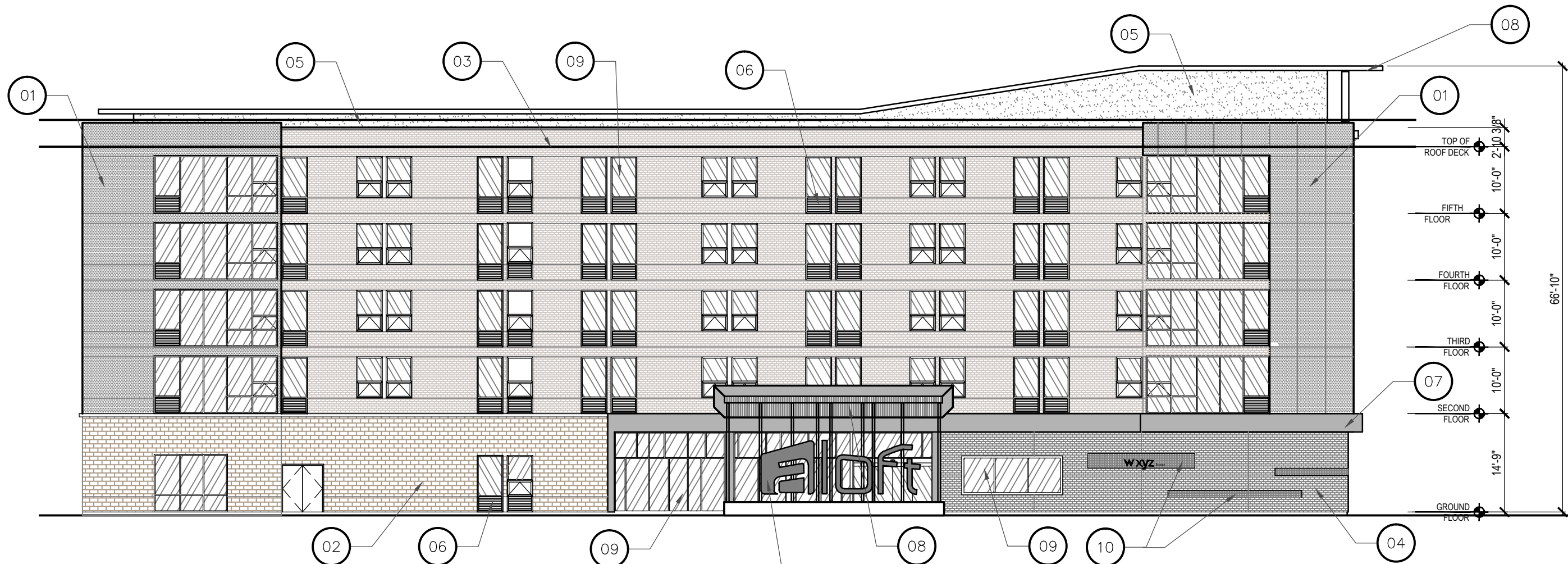


03 West Elevation

SCALE: 1/16" = 1'-0"

WEST ELEVATION

		TOTAL	1st Floor	2nd Floor	3rd Floor	4th Floor	5th Floor	PARAPET
AREA	TOTAL	6697.5 SF	1776.5 SF	1134.9 SF	1134.9 SF	1134.9 SF	1134.9 SF	381.4 SF
	WALL AREA	5528.6SF	1516.4SF	907.7SF	907.7SF	907.7SF	907.7SF	381.4SF
GLAZING	1168.9 SF	1430 SF	579.6SF	579.6SF	579.6SF	579.6SF	579.6SF	204.5 SF
	71.4%	84.3%	63.9%	63.9%	63.9%	63.9%	63.9%	53.6%
MASONRY	BRICK & STONE	352.4SF	1430 SF	579.6SF	579.6SF	579.6SF	579.6SF	204.5 SF
	NEOLITH	1429.8 SF	328.1 SF	328.1 SF	328.1 SF	328.1 SF	328.1 SF	117.4 SF
METAL	112.9SF	86.2 SF	0%	0%	0%	0%	0%	40.3SF
	2%	5.6%	0%	0%	0%	0%	0%	10.5%
STUCCO	19.1 SF	0%	0%	0%	0%	0%	0%	19.1SF
	0.8%	0%	0%	0%	0%	0%	0%	5%

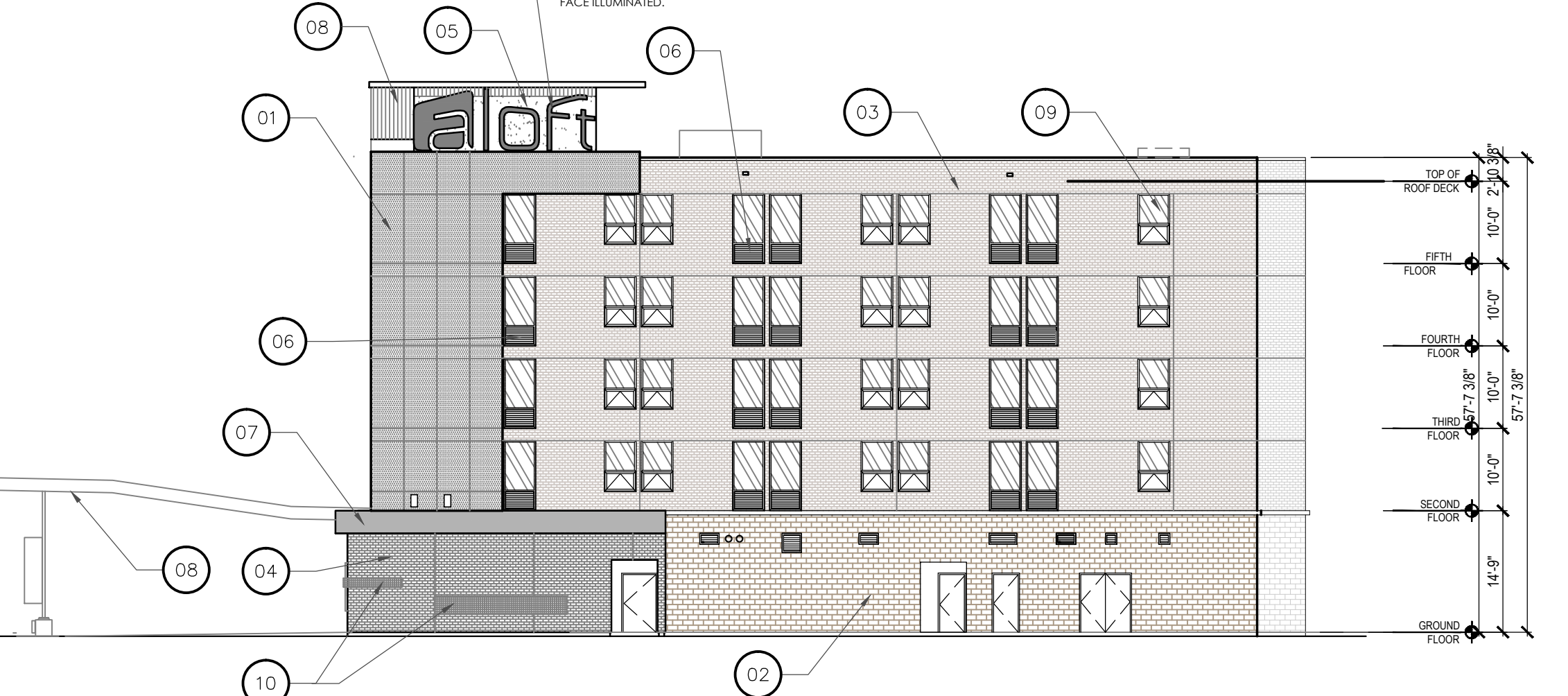


02 North Elevation

SCALE: 1/16" = 1'-0"

NORTH ELEVATION

		TOTAL	1st Floor	2nd Floor	3rd Floor	4th Floor	5th Floor	PARAPET
AREA	TOTAL	11796.6 SF	2804.7 SF	1905.7 SF	1905.7 SF	1905.7 SF	1905.7 SF	1369.1 SF
	WALL AREA	7807.3SF	1957.3SF	1461.8SF	1461.8SF	1461.8SF	1461.8SF	1369.1SF
GLAZING	3988.4 SF	1564.8 SF	859.02 SF	859.02 SF	859.02 SF	859.02 SF	859.02 SF	328.8 SF
	71.9%	80%	76.4%	76.4%	76.4%	76.4%	76.4%	24%
MASONRY	BRICK & STONE	5329.6 SF	1564.8 SF	859.02 SF	859.02 SF	859.02 SF	859.02 SF	328.8 SF
	NEOLITH	1272.7 SF	0%	263.28 SF	263.28 SF	263.28 SF	263.28 SF	219.6 SF
METAL	491.7SF	320.1 SF	0%	0%	0%	0%	0%	171.6 SF
	6.3%	16.5%	0%	0%	0%	0%	0%	12.5%
STUCCO	644.6 SF	0%	0%	0%	0%	0%	0%	644.6 SF
	8.3%	0%	0%	0%	0%	0%	0%	47.5%
SPANDREL PANEL	69.3 SF	69.3 SF	0%	0%	0%	0%	0%	0%
	0.8%	3.5%	0%	0%	0%	0%	0%	0%



01 East Elevation

SCALE: 1/16" = 1'-0"

EAST ELEVATION

		TOTAL	1st Floor	2nd Floor	3rd Floor	4th Floor	5th Floor	PARAPET
AREA	TOTAL	6835.74SF	1748.5 SF	1135.76 SF	1135.76 SF	1135.76 SF	1135.76 SF	544.2 SF
	WALL AREA	5528.6SF	1580.2SF	907.7SF	907.7SF	907.7SF	907.7SF	544.2SF
GLAZING	1306.7SF	168.3 SF	690.2 SF	690.2 SF	690.2 SF	690.2 SF	690.2 SF	204.8 SF
	80.3%	93.2%	81%	81%	81%	81%	81%	37.6%
MASONRY	BRICK & STONE	4368.6SF	1429.8 SF	690.2 SF	690.2 SF	690.2 SF	690.2 SF	204.8 SF
	NEOLITH	785.8SF	160.9 SF	160.9 SF	160.9 SF	160.9 SF	160.9 SF	117.2 SF
METAL	159.5SF	110.3 SF	0%	0%	0%	0%	0%	49.2 SF
	2.8%	6.9%	0%	0%	0%	0%	0%	9.0%
STUCCO	172.8 SF	0%	0%	0%	0%	0%	0%	172.8 SF
	3.2%	2.7%	0%	0%	0%	0%	0%	31.7%
SPANDREL PANEL	41.9 SF	41.9 SF	0%	0%	0%	0%	0%	0%
	0.7%	0%	0%	0%	0%	0%	0%	0%

FINISH MATERIAL LEGEND

- 01 STONE : NEOLITH BASALT BLACK, 6MM
- 02 STONE : LEUDERS BUFF ROUGH BACK
- 03 BRICK : BLACKSON BRICK, V224 SM
- 04 BRICK : BLACKSON BRICK, MED 77 SM
- 05 STUCCO - COLOR 1
- 06 ALUM. LOUVER IN (WINDOW SYSTEM)
- 07 METAL : KAWNEER DARK BRONZE NO.40
- 08 PRE-ENGINEERED ORNAMENT STRUCTURE. EXTERIOR COLORED SOFFIT
- 09 GLAZING WINDOW
- 10 BACK PAINTED GLASS