

ORDINANCE NO. ____

AN ORDINANCE OF THE CITY OF COPPELL, TEXAS, ADOPTING THE CITY OF COPPELL DESIGN MANUAL FOR THE INSTALLATION OF NODES AND NODE SUPPORT POLES IN THE CITY RIGHTS-OF-WAY, PURSUANT TO TEXAS LOCAL GOVERNMENT CODE CHAPTER 284; AND DESIGNATING DESIGN DISTRICTS FOR THE INSTALLATION OF NETWORK NODES AND NODE SUPPORT POLES; PROVIDING A REPEALING CLAUSE; PROVIDING A SEVERABILITY CLAUSE; AND PROVIDING AN EFFECTIVE DATE.

WHEREAS, Chapter 284 of the Local Government Code, effective September 1, 2017, provides a regulatory framework governing the installation of Nodes and Node Support Poles in the City's Right-of-Way; and

WHEREAS, pursuant to Chapter 284, Network Providers installing wireless equipment in the City's Right-of-Way must comply with the Design Manual adopted by the City for that purpose; and

WHEREAS, Chapter 284 authorizes the City to designate Design Districts and Historic Districts, wherein heightened aesthetic requirements may be applied to such equipment; and

WHEREAS, the City of Coppel has determined that certain areas of the city which should be designated as design districts, for purposes of Chapter 284, in order to preserve the character and aesthetic qualities of these areas;

WHEREAS, the City Council, in the exercise of its legislative discretion, has concluded that the areas described below shall be designated as Design Districts for these purposes, and the attached Design Manual should be approved.

NOW, THEREFORE, BE IT ORDAINED BY THE CITY COUNCIL OF THE CITY OF COPPELL, TEXAS, THAT:

SECTION 1. The areas of the City of Coppel depicted on Exhibit A, attached hereto and incorporated herein, are hereby designated as Historic Districts and Design Districts for the installation of network nodes and node support poles, pursuant to Chapter 284 of the Local Government Code.

Historic District Number 1 is the area referred to as Coppel Old Town/Historic District. Its boundaries are: depicted in Exhibit A.

Currently designated *Design District* areas are:

(a) Design District Number 1 is the area referred to as Town Center District. Its boundaries are: depicted in Exhibit A.

(b) Design District Number 2 is the area referred to as Retail District. Its boundaries are: depicted in Exhibit A.

(c) Design District Number 1 is the area referred to as Commercial District. Its boundaries are: depicted in Exhibit A.

(d) Design District Number 2 is the area referred to as Highway Commercial District. Its boundaries are: depicted in Exhibit A.

SECTION 2. The Coppell Design Manual for the Installation of Network Nodes and Node Support Poles, attached hereto as Exhibit “B”, is hereby adopted. All Network Providers seeking to install wireless equipment in the public rights-of-way of the City of Coppell pursuant to Chapter 284 of the Local Government Code must comply with this Design Manual.

SECTION 3. That the City Manager and/or his designee is hereby authorized to amend the Design Manual as he determines to be necessary and appropriate and in the best interest of the City.

SECTION 4. All provisions of the ordinances of the City of Coppell in conflict with the provisions of this Ordinance be, and the same are hereby, repealed, and all other provisions of the ordinances of the City of Coppell not in conflict with the provisions of this Ordinance shall remain in full force and effect.

SECTION 5. If any section, paragraph, subdivision, clause, phrase or provision of this Ordinance shall be judged to be invalid or unconstitutional by a court of competent jurisdiction, the same shall not affect the validity of this Ordinance as a whole or any portion thereof other than the portion so decided to be invalid or unconstitutional.

SECTION 6. This Ordinance shall take effect immediately from and after its passage and the publication of the caption, as the law and charter in such case provide.

**DULY PASSED BY THE CITY COUNCIL OF THE CITY OF COPPELL, TEXAS, ON
THIS THE ____ DAY OF _____, 2017.**

ATTEST:

APPROVED:

City Secretary

Mayor

APPROVED AS TO FORM:

City Attorney

Design Districts

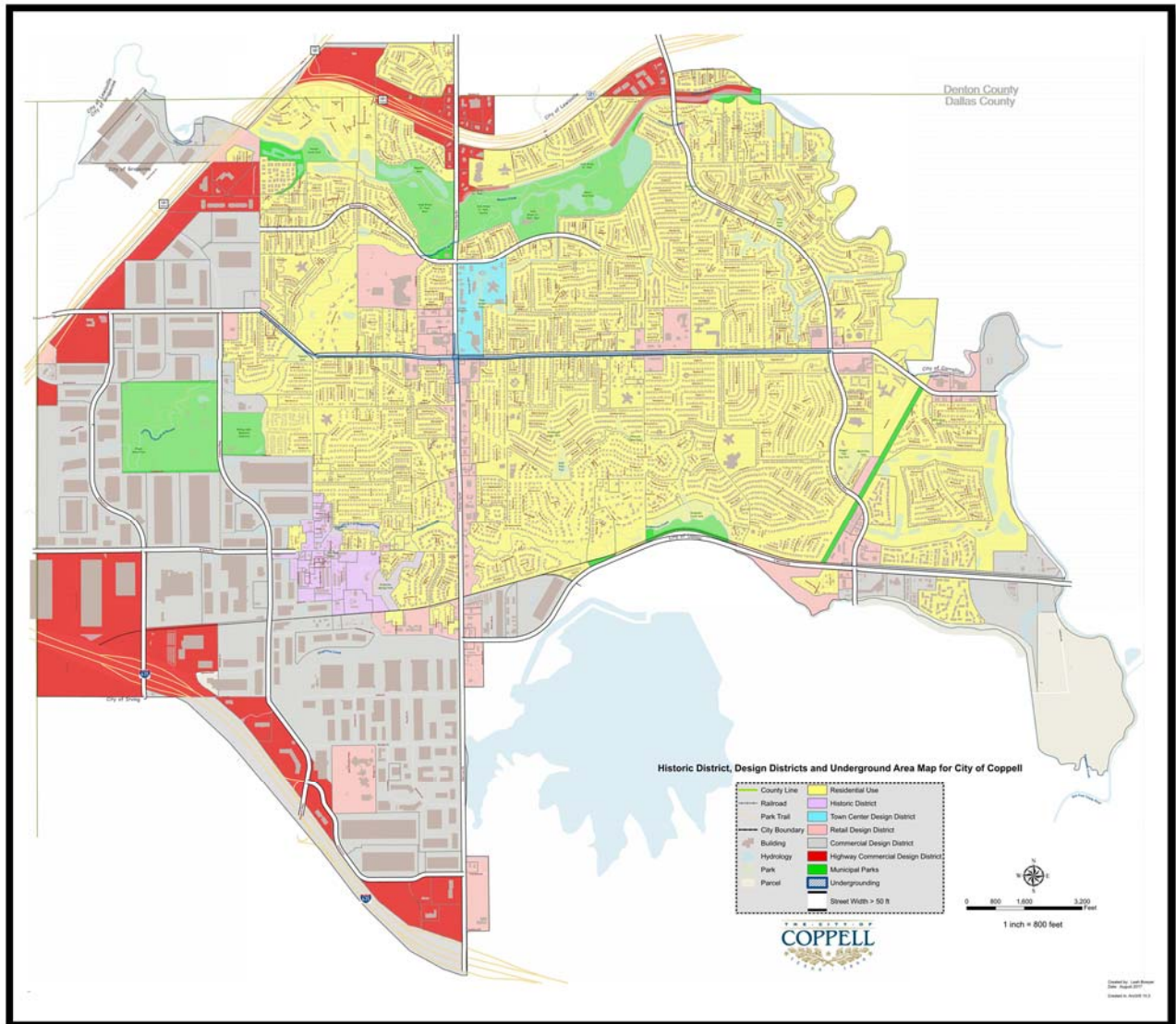


EXHIBIT “B”

**City of Coppell
Design Manual**